

LLADRÓ



HANDMADE PORCELAIN

HERITAGE

FALL 2024

HERITAGE



WORKS OF ART IN PORCELAIN

The creations you will find in these pages showcase Lladró's technical and artistic excellence. They are capable of awakening the best feelings in us because they speak the universal language of emotions, of culture and of traditions. Works handcrafted in porcelain that tell us the most wonderful stories.



PRINCESS SCHEHERAZADE 2

LORD HANUMAN 8

LORD GANESHA WALL ART 12

ATHENA 14

KARABAKH HORSE 18

DEER 22

BOXER 24

COCKATOO VASE 26

UNDERWATER 28

KOALA 30

LOVELY WORLD 32

IMMACULATE HEART OF MARY 34

HINA DOLLS 36

SAMURAI HELMET 38

BATMAN 40

R2D2 & HAN SOLO 44

THYSSEN-BORNEMISZA 46

HOLIDAYS 50



HIGH PORCELAIN
PRINCESS SCHEHERAZADE
01002035
36 x 56 x 31 cm
14 1/4 x 22 x 12 1/4"
Limited edition of 300 units

PRINCESS SCHEHERAZADE

HIGH PORCELAIN



Among the many stories that have come down to us over the course of time, from all different periods and from all different cultures, there are few as fascinating and charming as the tales told by the resourceful Princess Scheherazade to King Shahriar during the legendary Thousand and One Nights. This portrayal of an unsurpassed narrator is a tribute to the art of storytelling and the pleasure of listening, especially when the stories transport us to the magical world of oriental legends.

HIGH PORCELAIN

Princess Scheherazade has everything you could imagine from the main character of a timeless myth: the fascinating beauty of a woman able to seduce a legendary king, coupled with the opulent luxury of the Orient. The delicately modeled princess is depicted reclining among brightly-colored fabrics and cushions and finely outlined rich ornamentation, while the details in

golden luster add a further touch of wealth and vibrancy to the overall composition.

A scene conjured in the imagination of true romantic artists who have also envisaged the Orient shrouded in mystery and sensuality. Here the magic of the Thousand and One Nights is turned into a fantasy in porcelain able to make us dream.



HIGH PORCELAIN



HIGH PORCELAIN



Lord Hanuman is one of the most venerated deities in Hindu mythology. Known as the monkey god, he is a central character in *Ramayana*, one of India's most important ancient epics. Famous for his unwavering devotion to the god Rama, one of the avatars of Vishnu, Hanuman is revered as a symbol of loyalty and courage. Son of Vayu, god of the wind, he possesses incredible physical strength and extraordinary power.

HIGH PORCELAIN
LORD HANUMAN
 01002038
 52 x 35 x 38 cm
 20 1/2 x 13 3/4 x 15"
 Limited Edition of 499 units

LORD HANUMAN



HIGH PORCELAIN



The sculpture of *Lord Hanuman* is a complex work requiring over thirty fragments. Fifteen different colors were used in the decoration, including metallic tones and golden and pearlescent lusters. In addition, Hanuman is adorned with a garland of 112 white flowers, 166 green leaves and 5 roses, all handcrafted petal by petal. Equally of note are the minute etchings used to recreate the helmet, crown and jewelry.

Lord Hanuman in porcelain is a monumental work that measures up to the deity it represents.



LORD GANESHA

Wall Art



LORD GANESHA WALL ART
01009758
 35 x 30 x 7 (14) cm
 13 3/4 x 11 1/2 x 2 1/2"



Lord Ganesha Wall Art is an extraordinary relief sculpture and, at the same time, a delicate filigree work, dedicated to one of the most venerated gods in Hindu culture.

Ganesha is the god of wisdom, the remover of obstacles and the harbinger of prosperity. In this depiction he is portrayed with all his usual attributes, painstakingly modelled in white matte porcelain with great attention to detail and a perfect finish. The piece is richly decorated with golden and copper lusters in glazed and matte finishes.

Overall it is a work of great artistic and decorative complexity, an excellent example of craftsmanship and of ornamental and sculptural wealth. A creation charged with spiritual power for devotees of Ganesha and for lovers of ancient Indian culture.

Lord Ganesha Wall Art is a work conceived especially to be hung on the wall, but it also comes with a support so that it can be displayed on any surface.

ATHENA



The daughter of Zeus and Metis, Athena was the Greek goddess of wisdom, tactics and good counsel. Believed to be the protectress of the city of Athens, she is also the goddess of war, understood as the fight to achieve justice.

Greek mythology, with its legends, gods and heroes, continues to captivate us today. The wealth of its stories and its powerful symbolism are an endless source of inspiration for our artists.



ATHENA
01009754
 72 x 44 x 38 cm
 28 1/4 x 17 1/4 x 15"



Athena comes to life in our workshops thanks to this interpretation in white matte porcelain, decorated with ocher and golden lusters and with metallic whites in an iridescent finish. Accompanying the goddess is her faithful owl, the symbol of wisdom. This bird is portrayed in porcelain in great detail, posing on *Athena's* shoulder and also etched in bas relief on the helmet, bracelet and leg guards.

In addition, etched on the protective shield is the head of Medusa, the gorgon who turned anyone who looked upon it into stone.

Gods depicted through other gods, characters that converge and lives that intersect in order to share with us the culture of Ancient Greece and its fascinating history.

GODDESS OF OLYMPUS



The Karabakh horse is one of Azerbaijan's national symbols. Graceful, sure-footed, and hardy, it embodies the value of the country's traditions and its aspiration to continue advancing. Our artists have taken inspiration from these magnificent specimens and recreated them in porcelain, paying meticulous attention to the finer details. From the well-defined expressive head, the straight profile, and vivid intelligent eyes, all its anatomical features have been masterfully sculpted.

Inspired by ancient Azerbaijani tradition, the horse's back is covered by a Karabakh carpet with its famous unique distinctive patterns. A combination of metallic reds, greens, blues, whites, and gold was chosen to recreate their coloring.



KARABAKH HORSE





KARABAKH HORSE
01009752
44 x 53 x 21 cm
17 1/4 x 20 3/4 x 8 1/4"
Limited edition of 750 units

The saddle, etched by hand with a delicate floral design, is decorated with golden luster, and to capture the authentic color of these sorrel horses, a dark copper brown enamel was created especially. The bit and stirrups are in gold-plated brass while the reins are natural leather. All the details have been carefully studied to faithfully portray this strong horse with undeniable class.



DEER

DEER (WHITE-COPPER)
01009771
 52 x 41 x 22 cm
 20 1/2 x 16 1/4 x 8 3/4"

Deer is an homage to the king of the forest, one of the most beautiful and elegant creatures in the animal kingdom. This sculpture captures the nobility and assertiveness that characterizes this powerful mammal.

The piece is made in white matte porcelain, without glaze, which makes it easier to appreciate the fine details of the sculpture such as the facial features, the musculature or the thick coat.

The only color used in the decoration is a touch of ochre luster carefully applied with fine brushstrokes on the animal's magnificent antlers. The metallic finish contrasts with the matte white and further enhances the deer's imposing figure.

The pose, standing on four legs, calls for precise technical control, particularly to ensure that the reduction of size of about fifteen percent, which all pieces undergo after firing in the kiln, turns out to perfection.





BOXER

Stepping into a ring and confronting a rival calls for discipline, tough training and the courage to face up to pain and defeat. Perhaps for this reason, boxing is a metaphor for life that thrills millions of spectators around the world and has inspired great works of art.

This porcelain sculpture portrays a champion in the middle of a fight. The precise realist modeling outlines every muscle of his body and every feature of his expression, concentrated on the next blow. The decoration of the piece is equally special: matte black for the body, glazed white for the gloves and golden and silver luster for the shorts and boots.

Boxer is a sculpture inspired by a sport with deep cultural roots. Boxing is a way of transforming fighting into a ritual, of subjecting physical strength to a discipline with highly demanding rules.



BOXER
01009772
61 x 35 x 35 cm
24 x 13 3/4 x 13 3/4"



This porcelain creation seeks to capture these values of commitment, courage and strength. With his powerful body and perfect pugilistic skills *Boxer* portrays all the grandeur of a demanding sport that thrills and fires up audiences all over the world.



Cockatoo Vase is yet another example of the grandeur of nature as a source of inspiration for art. The central feature of this vase is a cockatoo, a beautiful bird originally from Australia which is rightly famous for its colorful crest.

In this porcelain interpretation the cockatoo is decorated in a range of mainly bluish and reddish colors applied in degraded tones. These colors are complemented with the iridescent crystal of the head and body and the touches of golden luster, in both matte and glazed, on the legs and beak. All the decoration is applied in fine brushstrokes to achieve a nuanced chromatic effect.

Contrasting with the realist and colorful treatment, the cockatoo is perched on the edge of a refined white vase etched with a geometric pattern. This combination of opposites results in a vase perfect for filling with flowers or as a decorative element in its own right.

COCKATOO Vase

COCKATOO VASE
01009768
 51 x 27 x 24 cm
 20 x 10 3/4 x 9 1/2"





ELEPHANT - UNDERWATER
 01009761
 27 x 36 x 14 cm
 10 3/4 x 14 1/4 x 5 1/2"

UNDERWATER

This new creation joins the *Underwater* collection, inspired by nature and water, the primeval element that gave rise to all life. It is a demonstration of how art, through the unique expression of porcelain, connects us with nature and celebrates it. Thanks to our artists' consummate control of sculpture and the decorative techniques developed specifically for these pieces, *Underwater* offers us an unrivaled vision of the fusion between the animal kingdom and nature.

The perfection of the forms is further enhanced by a pioneering decoration in degraded bluish tones that achieves an almost real effect of immersion in water. The end result, as can be seen in this elephant, is a series of contemporary creations that not only embellish, but also captivate with their magnificent handcrafted elaboration in porcelain and with their message.

Elephant - Underwater is modeled in white matte porcelain, which highlights the texture of the animal's skin and anatomy. To achieve the water effect of the decoration, the degraded color is applied from bottom upwards and is rounded off with pearlescent lusters.



KOALA (BLACK-GOLD)
 01009769
 34 x 21 x 27 cm
 13 1/2 x 8 1/4 x 10 3/4"
 Limited Edition of 1,000 units



KOALA



Koala captures to perfection the *Boldblack collection's* unique mix of naturalism and leading-edge. The series offers a singular vision of the animal kingdom in creations notable for matching realist and precise modeling with a bicolor black-and-gold decoration. With an unmistakable creative treatment, these designs fit in with the most varied interior styles.

Koala portrays one of the world's most endearing animals from a surprising new angle. The creation combines the expressiveness and detail of refined sculpture with a highly sophisticated decoration. The

matte black porcelain enhances every little detail and contrasts with the golden luster to create a very attractive decorative effect.

The koala is deeply significant for Australia's first nations peoples, who believe it to be a symbol of wisdom and adaptation. In their legends it is often depicted as a being with profound insight into its environment and with a heightened sense of community. It is also a totem of conservation and respect for the environment, now turned into an innovative decorative and artistic creation.

Whiskers-Playful Kitten and *Buddy-Caring Puppy* are the new creations from *Lovely World*, a collection dedicated to love, the most universal of all emotions.

An ancient Oriental legend tells a story about people who are fated to meet because they are connected by an invisible red thread. No matter the time or distance separating them, this thread ties them together and is never broken.

This collection is inspired by that connection that joins people together regardless of the walls, frontiers and hardships placed between them. These little animals embody different ways of expressing love: intuition, generosity, protection, loyalty... *Whiskers* represents the most fun-loving and playful side of love while *Buddy* captures the more tender-hearted and sweet side. The connection, that red thread, is symbolized by a deep red heart that stands out against the white porcelain with which the piece is modelled.



LOVELY WORLD

BUDDY-CARING PUPPY
 01009776
 13 x 8 x 8 cm
 5 x 3 1/4 x 3 1/4"

WHISKERS-PLAYFUL KITTEN
 01009775
 12 x 7 x 7 cm
 4 3/4 x 2 3/4 x 2 3/4"



IMMACULATE HEART OF MARY



IMMACULATE HEART OF MARY
01009762
40 x 28 x 21 cm
15 3/4 x 11 x 8 1/4"



This work is a representation of the Sacred Heart of Mary, one of the images most widely venerated by Christians all over the world. It symbolizes Mary's pure and unconditional love for her son Jesus and for humanity. This depiction in porcelain is inspired by religious imagery and tradition and by works of the old masters from the history of art.

The piece is modelled in matte white porcelain, further enhancing the precise sculpting of the serene and delicate face of the Virgin Mary, whose head is crowned with a golden halo, a sign of her holiness and purity.

The central element is Mary's sacred heart in the middle of her breast. The heart

is surrounded by over twenty flowers, all painstakingly handmade petal by petal. These flowers are another symbol of Mary's purity. In addition, the pistils of the blue flowers are decorated with touches of golden luster, adding an extra note of elegance and refinement.

The heart itself is a deep red color, adorned with a small golden crown and topped with a flame, representing Mary's burning heart and her suffering for humanity. The piece as a whole is conceived for contemplation, withdrawal and prayer. A work that conveys sensations of peace, kindness and love.



HINA DOLLS (TURQUOISE-PINK)
01009759
 25 x 41 x 22 cm
 9 3/4 x 16 1/4 x 8 3/4"
 Limited Edition of 500 units

This composition represents one of the most popular and best-loved traditions in Japan. Every March 3, Hinamatsuri or Doll's Day is celebrated all over the country. On this day, little girls receive a gift of *Hina Dolls*, figures that symbolize the desire for a happy life. These *Hina Dolls* portray an emperor and an empress from the Heian period and faithfully depict the rich clothing of the Japanese imperial court. The child-like emperor and empress are represented with all the refinement and distinction of an ancient culture that pays tribute to its history and celebrates its legacy and traditions in the family home.

HINA DOLLS



These *Hina Dolls*, entirely handcrafted in porcelain, are decorated in pastel tones in a range of turquoise blue and pale pink. All the details have been faithfully recreated, from the folds of the garments to the accessories worn by the emperor and empress, the hair and the make-up on their faces.

During this festival, *Hina dolls* are displayed on a tiered stand called a hinadan. The celebration can be traced back to an



ancient belief that these dolls could ward off all evil. Families pray for the future happiness and well-being of little girls when they display these dolls. Hinamatsuri is a special occasion, a sign of the fondness with which families renew old traditions, passing on the importance of respecting them to their younger members. And so, these porcelain creations will become part of the family legacy, heirlooms to be passed down from generation to generation.

SAMURAI HELMET

Golden Dragon

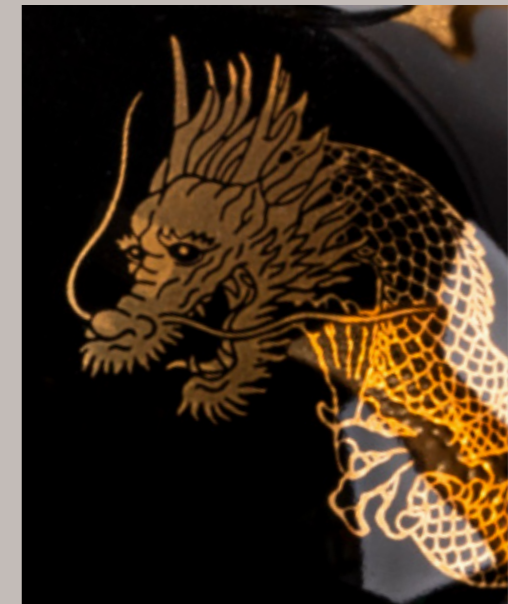


SAMURAI HELMET - GOLDEN DRAGON
01013055
 25 x 21 x 17 cm
 9 3/4 x 8 1/4 x 6 3/4"
 Limited Edition of 500 units
 WOODEN BOX - JAPAN EXCLUSIVE

Handcrafted in black matte and glazed porcelain, *Samurai Helmet* is decorated with touches of golden luster. This recreation of one of the most emblematic symbols in traditional Japanese culture comes in a limited edition of just 500 units. The helmet boasts a wealth of detail. All the matte parts are etched by hand with various plant and geometric patterns. These etchings are further enriched with a matte and glazed two-color decoration in black and gold.

Equally of note is the upper part of the helmet featuring a couple of dragons, executed following the traditional Japanese style. The application of a layer of varnish gives it a finish similar to the lacquer technique. The helmet is rounded off with the traditional cloth and cord.

Samurai Helmet was inspired by our fascination for an ancient, refined and elegant tradition. A culture that loves beauty, attention to detail and the search for equilibrium and harmony. A series of ideals that the Japanese people have always managed to apply to all aspects of life. Ancient samurais are known not just for their skill in battle, but also for their profound ideals, based on honor, loyalty and discipline. The legacy of this caste of warriors continues to influence Japanese culture today and is still a source of fascination all over the world. *Samurai Helmet* captures the spirit of this thousand-year-old legacy and transforms it into a finely decorated porcelain creation.



A TRIBUTE TO ONE OF THE WORLD'S MOST ALLURING AND SOPHISTICATED CULTURES



BATMAN



Coinciding with his 85th birthday, and in collaboration with Warner Bros-Discovery Global Consumer Products, we are unveiling *Batman™* x Lladró, a portrait in porcelain of the legendary superhero in a limited edition of just 500 units.

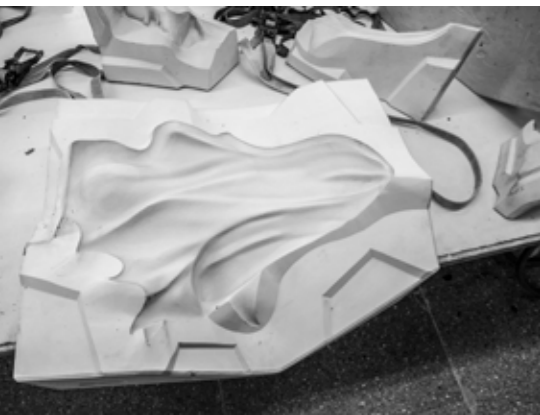
The mythical caped crusader, created by the US publishers Detective Comics in 1939, is the focus of this handcrafted porcelain creation which recreates Gotham City's iconic avenger in minute detail.

The Dark Knight is the alter ego of the multi-millionaire Bruce Wayne and took his inspiration from bats to create his famous disguise. He wears a cape imitating bat wings, a mask, the bat symbol on his chest and sophisticated gadgets, like his famous utility belt.



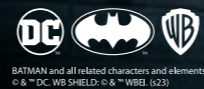


BATMAN™
01009708
43 x 44 x 34 cm
17 x 17 1/4 x 13 1/2"
Limited Edition of 500 units



Similar to the rest of our creations, *Batman™* is made following an entirely handcrafted process involving our most expert artists. This version in black matte porcelain stands out for the precision of the sculptural work and the decoration combining glazed and matte finishes in jet black, touches of golden luster and stone-gray brushstrokes.

Batman™ captures the dynamism of the character, with his cape blowing in the wind as he perches on one of the iconic gargoyles of the roofs of Gotham City. Ready to jump into action in defense of justice.



BATMAN and all related characters and elements
© & ™ DC, WB, SHELDO & WB. (S23)

HAN SOLO

We are completing our *Star Wars* collection with two must-have characters: *Han Solo* and *R2D2*.

Han Solo, the famous intergalactic pilot, is portrayed with the utmost possible faithfulness. The sculpture includes all the details that make the favorite hero of fans of this movie saga so unmistakable: his confident swagger, his sarcastic expression and the painstaking reproduction of his signature clothing and weapons. This recreation is a faithful replica of the original character immortalized by the actor Harrison Ford.



R2D2

Meanwhile, *R2D2*, one of the best-loved members of the *Star Wars* cast of characters, together with his inseparable companion *C-3PO*, is recreated in great detail and decorated in his signature colors with touches of metallic luster.

Two new creations entirely handcrafted in porcelain that capture the essence of these iconic space heroes.

**STAR
WARS**
— COLLECTION BY —
LLADRÓ
HANDMADE PORCELAIN
SPAIN

HAN SOLO
01009735
39 x 14 x 13 cm
15 1/4 x 5 1/2 x 5"

R2D2
01009736
20 x 13 x 11 cm
7 3/4 x 5 x 4 1/4"



THYSSEN-BORNEMISZA COLLECTION

LLADRÓ x THYSSEN-BORNEMISZA
MUSEO NACIONAL

YOUNG KNIGHT IN A LANDSCAPE



We are presenting a collection of highly disparate porcelain pieces that nevertheless share the common feature of having been designed in collaboration with the Thyssen-Bornemisza National Museum. One of Spain's foremost art museums, it boasts one of the greatest collections of old masters of Western painting, with major works by Titian, Caravaggio, Rubens, Rembrandt, Monet, Degas, Cézanne, Van Gogh, Picasso, and Kandinsky, among a host of many others artists.

Our collection includes pieces inspired by works from the museum: "Young Knight in a Landscape", 1505, by Carpaccio, and "Simultaneous Dresses", 1925, by Sonia Delaunay.

Carpaccio's *Ermine and crane chopstick set* portrays two of the animals that appear in "Young Knight in a Landscape". This painting by the Renaissance master from the Venetian school depicts a knight in armor posing in the middle of a richly decorated scene which includes another knight, buildings, plants and numerous animals, all represented with great detail and refinement. Two of these animals served as inspiration for our pieces: an ermine and a crane with elegant and stylized lines. The forms of the two animals act as chopstick rests in the fusion between aesthetics and functionality which is the signature trait of these two creations.



ERMINE AND CRANE CHOPSTICKS SET
01009773
6 x 23 x 13 cm
2 1/4 x 9 x 5"

WOMAN I
01017829
 30 x 18 x 12 cm
 11 3/4 x 7 x 4 3/4"

WOMAN II
01017830
 32 x 18 x 12 cm
 12 1/2 x 7 x 4 3/4"

WOMAN III
01017831
 31 x 20 x 14 cm
 12 1/4 x 7 3/4 x 5 1/2"

THYSSEN-BORNEMISZA
 COLLECTION



LLADRÓ × THYSSEN-BORNEMISZA
 MUSEO NACIONAL



Woman I, Woman II and Woman III are three pieces inspired by Sonia Delaunay's "Simultaneous Dresses". In this painting, the Paris-based Ukrainian-born artist, one of the pioneers of abstract art and the early twentieth-century avant-gardes, gives expression to another of her many facets: a fashion designer. More specifically, one of the three dresses that appear in the painting was designed for the Hollywood star Gloria Swanson.

The three pieces are transformed into functional porcelain objects: bottles with their respective glasses that, at once, preserve the forms of the dresses in which they are inspired and the spirit of Cubism and the avant-garde that underpinned the original work. The intense colors and the pure and geometric forms complete the appeal of creations in which handcrafted porcelain meets the most innovative art.



SIMULTANEOUS DRESSES

HOLIDAYS



Christmas is not Christmas until we take out our box of ornaments to decorate our home, and until we begin to hear festive songs and to smell the appetizing aromas of cinnamon and freshly baked cakes.

Christmas Bell and *Christmas Ball* are the ornaments par excellence for the most magical season of the year, on this occasion, only available in limited units. The pieces are decorated with subtle relief work inspired by traditional motifs from Nordic culture: lucky horseshoes, rocking horses and other wooden toys that make us dream of snow-covered landscapes with reindeer, fir trees and little houses with pitched roofs. The decoration also includes the year, highlighted in a soft pastel color, and a blue ribbon.

The Christmas spirit is captured in a beautiful adornment, a shared wish for peace and prosperity transformed into porcelain.

2025 CHRISTMAS BELL
01018484
 9 x 8 x 8 cm
 3 1/2 x 3 1/4 x 3 1/4"
 Limited Edition of 3500 units

2025 CHRISTMAS BALL
01018486
 10 x 9 x 9 cm
 4 x 3 1/2 x 3 1/2"
 Limited Edition of 3500 units



Photography
 Lladró

Many thanks to
 Ana Arnau, Viruta Lab, Paloma Bau, Cualiti, Teulat, Studio Montanyana and María José Martínez.

@virutalab
 @palomabaustudio
 @teulatdesign
 @studiomontanyana



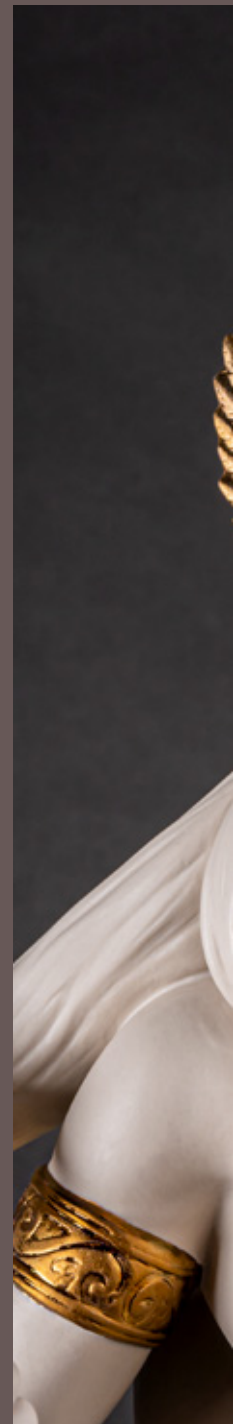
LLADRÓ - VALENCIA, SPAIN
 (+34) 963 187 000
 (+34) 900 211 010 (TOLL FREE)
 customer-services@es.lladro.com
 www.lladro.com

Lladró is the success story of an iconic Spanish brand. A world leader in the design, manufacturing and distribution of porcelain art creations. Lladró is a unique mix of talent, audacity and meticulousness in the quest for excellence.

From chemistry to modeling, as well as carving, etching, painting... a team of expert artists and designers keeps alive the ancient crafts and methods of turning porcelain into dreams. Unique craft processes that are applied in the most figurative Lladró as well as in lighting products, home accessories and jewelry. **The degree of craftsmanship is so high that no two pieces are exactly alike, which means that there may be differences between creations from the same series. That's why Lladró creations are unique and unrepeatabe.** Works that invite us to relax and enjoy moments of intimacy, further enhanced by the exclusive and distinguishing touch of handcrafted porcelain.

The pictures of the pieces may vary slightly from the original models.

WHERE PORCELAIN BECOMES ART



LLADRÓ

HANDMADE PORCELAIN
Spain