

kettal

2–3

# Index

4–9

# Ecological awareness

10–11

# Designers

12–51

# Architecture

12–29 Pavilion V  
30–35 VDL  
36–45 Pavilion H

46–47 Daybed  
48–49 Cottage

52–289

# Furniture

52–73 Passage  
74–95 Insula  
96–103 Eolias  
104–127 Giro  
128–137 Molo  
140–147 Il Colonnato  
148–159 Grand Bitta  
160–169 Bitta & Bitta Lounge  
170–179 Plumon  
180–187 Boma  
188–193 Riva  
194–197 Mesh

203–205 Net  
206–215 Cala  
216–225 Park Life  
226–231 Band  
232–235 Roll  
236–239 Basket  
240–243 Tou  
244–247 Arc  
248–253 Altar  
254–257 Pad  
258–261 Ringer  
262–267 Vimini

268–273 Maia  
274–283 Landscape  
284–285 Stampa  
286–287 Village

288–299

# Lighting

290–299 Half Dome  
292–299 Bela lamp

294–299 Dots  
296–299 Mia

300–311

# Shadow

302–305 Paladin  
306–311 Meteo S  
307–311 Meteo L

312–333

# Objects

314–319 Superfan  
320–327 Base Kitchen  
328–328 Sideboard

330–331 Rugs  
332–333 ZigZag  
333 Tutto

334–350

# Finishes

# Sustainability: Building a greener tomorrow.

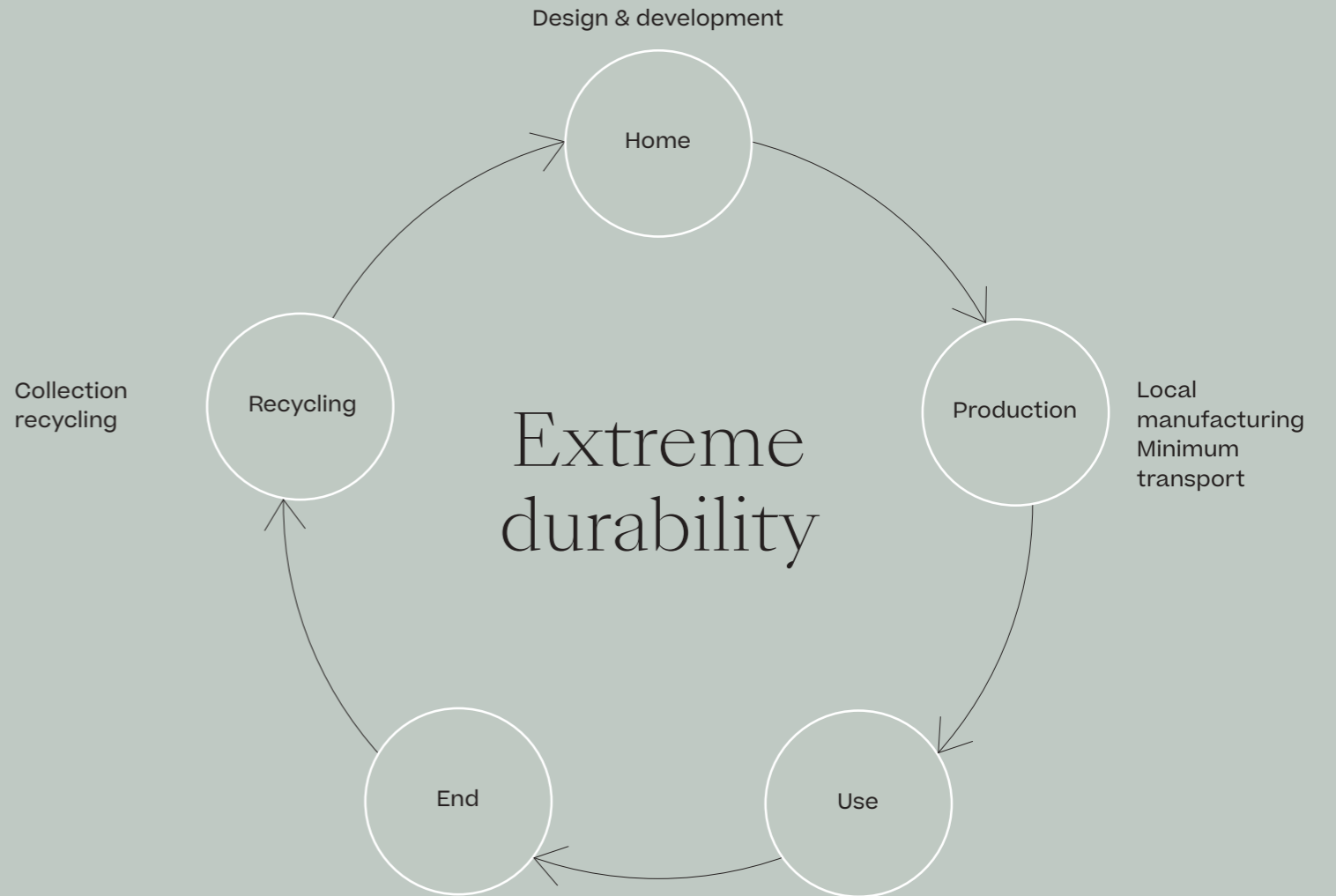
At Kettal, we are committed to more than just creating exquisite outdoor furniture and designs. We are dedicated to shaping a sustainable future where beauty and nature coexist harmoniously. Our journey towards sustainability is rooted in a deep respect for the environment and a passion for innovation.

In an era where the preservation of our planet is of utmost importance, Kettal is taking meaningful steps towards reducing our carbon footprint, conserving natural resources, and minimizing waste. Our sustainable practices extend from the selection of eco-

friendly materials to energy-efficient manufacturing processes, all while maintaining our unwavering commitment to craftsmanship and design excellence.

Join us in exploring the world of Kettal Sustainability, where style meets eco-consciousness. Discover how we blend creativity with responsibility, striving to inspire a lifestyle that not only enhances outdoor spaces but also safeguards the planet for generations to come. Together, we can forge a greener tomorrow, one design at a time.

# We monitor the life cycle of our products.



# Materials

Materials are an important part of caring for the environment and a key factor in the product life cycle. All materials are recyclable and recycled as much as possible, as long as they have the characteristics to ensure durability. The better the quality, the longer the product life cycle. And a longer life cycle means it is more environmentally friendly, as fewer manufacturing processes will have to be put in place, reducing the carbon footprint and generating less waste.

Our raw materials are not only recyclable, but recycled. We study the impact of the material recovery process and the durability of the material over time. The essential raw materials are produced locally, within a radius of 100km. We have analysed each product life cycle to minimize environmental impact as far as possible. Not only raw materials, but other variables such as CO<sup>2</sup> emissions from transport or use and durability.

## Materials

Aluminium	85% Recycled	100% recyclable	Carbon emissions: 6,99kg CO2 eq/kg Durability average: 30 years
Terrain Coatings	0% Recycled	0% recyclable	Carbon emissions: 0,88 kg co2 eq/kg Durability average: 20 years
Relate fabrics	10% Recycled	100% recyclable	Carbon emissions: 0,321 kg co2 eq/kg Durability average: 15 years
Glass	20% Recycled	100% recyclable	Carbon emissions: 0,79 kg co2 eq/kg Durability average: 30 years
Stainless Steel	70% Recycled	100% recyclable	Carbon emissions: 4,55 kg co2 eq/kg Durability average: 20 years
Bela Ropes and Stripes	50% Recycled	100% recyclable	Carbon emissions: 2,21 kg co2 eq/kg Durability average: 15 years
Terrain Elements Fabrics	10% Recycled	100% recyclable	Carbon emissions: 3,81kg co2 eq/kg Durability average: 15 years
Parallel	60% Recycled	100% recyclable	Carbon emissions: 2,72 kg co2 eq/kg Durability average: 20 years
Ceramic	0% Recycled	85% recyclable	Carbon emissions: 0,67 kg co2 eq/kg Durability average: 30 years

# Key values

## We do not build in obsolescence.

### Fluorocarbon-free Fabrics

Creation of Terrain Fabrics, first fabric finished with a fluorocarbon-free compound, which is the ideal way to achieve wearing comfort and protect the material in an environmentally friendly way. Since then, all our fabrics are fluorocarbon-free.

### FSC Wood

All wood used in our furniture is FSC certified, ensuring its sustainable origin and responsible management. The wood used in our furniture has been sourced from well-managed forests, supporting the conservation of natural habitats and the livelihoods of local communities.

### Goal: Zero emissions

At Kettal, our goal is to achieve zero emissions by 2036. We are committed to minimizing our environmental impact and actively working towards a sustainable future. Through innovative practices, energy-efficient technologies, and responsible manufacturing processes, we aim to eliminate greenhouse gas emissions from our operations entirely. We understand the urgency of addressing climate change, and reaching this ambitious target is an essential step in creating a better world for future generations.

### Pavilions

Our Pavilions are made with 85% Recycled materials.

### Carbon footprint

Since the past year, we have been analyzing the carbon footprint of each of our products. In our commitment to sustainability, we believe it is essential to understand and reduce the environmental impact of our manufacturing processes. By examining the carbon footprint, we aim to identify areas where improvements can be made, such as optimizing energy consumption, reducing emissions, and implementing eco-friendly materials. This ongoing analysis allows us to make informed decisions and work towards creating more environmentally-conscious products for our customers.

### Environmental-certified materials

Our materials are backed by environmental certifications. These certifications ensure that the materials we use in our products have been sourced and processed in an eco-friendly and sustainable manner. We are committed to upholding these environmental standards and continuously seeking ways to minimize our ecological footprint.

### CFC-free polyurethane

The polyurethane we use is CFC-free. CFC stands for chlorofluorocarbon, which is a harmful substance known for its ozone-depleting properties. By opting for CFC-free polyurethane, we ensure that our products contribute to a healthier planet by reducing the release of harmful substances into the atmosphere. We believe in creating sustainable and responsible designs, and this commitment extends to the materials we choose.

### Paint almost 100% recyclable

Almost 100% of the paint we use is recyclable and environmentally friendly. The main supplier of paint used in the manufacture of furniture has both quality certifications (Qualicoat, GSB, IKS, Quali Steel Coat) and environmental certifications for its products (verified by AENOR in accordance with its Global EPD type III ecolabel system, ISO standards, etc.).



Patricia Urquiola



Rodolfo Dordoni



Jasper Morrison



Antonio Citterio



Naoto Fukasawa



Mario Bellini



Nanna & Jørgen Ditzel



Vincent Van Duysen



Konstantin Grcic



Michael Anastassiades



Doshi Levien



Ronan & Erwan Bouroullec



Miguel Milá



Dion and Richard Neutra



Michel Charlot



Emiliana Design Studio

# Architecture

# Bringing order, form and structure.



Kettal pavilions seek to bring order, form and structure to outdoor areas. Functionally, they are designed to provide shelter: to shade and cool or protect from the wind and rain.

# Pavilion V, by Vincent Van Duysen

The V Pavilion project is based on the idea of creating a dialogue between different environments: the interior and exterior of architecture.

The gentle connection between people and the environment through constructive elements, a free floor and the importance of light.

The pavilion is designed to be subtly linked to the main building and the outdoor area at the same time.

V Pavilion is inspired by 1950s American modernism, which summarised a more industrial trend of thought based on new and innovative building technologies and on Functionalism, emphasising open-plan, multifunctional spaces that are flexible and easily adapted and modified for any lifestyle or environment.









Pavilion V



The open areas between the columns can be assembled with various facings: glass, louvers to adjust the light, curtains, solid stoneware panels, cupboards, cooker, fireplace... to furnish a space that is customised to the client's specifications.









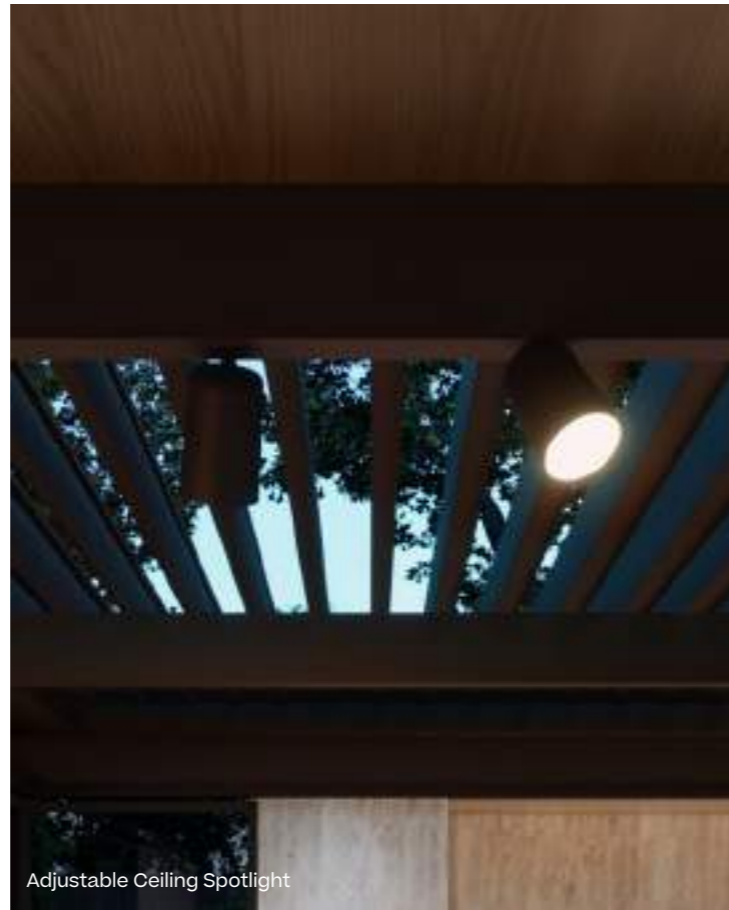
Perimetral LED light



Linear LED light

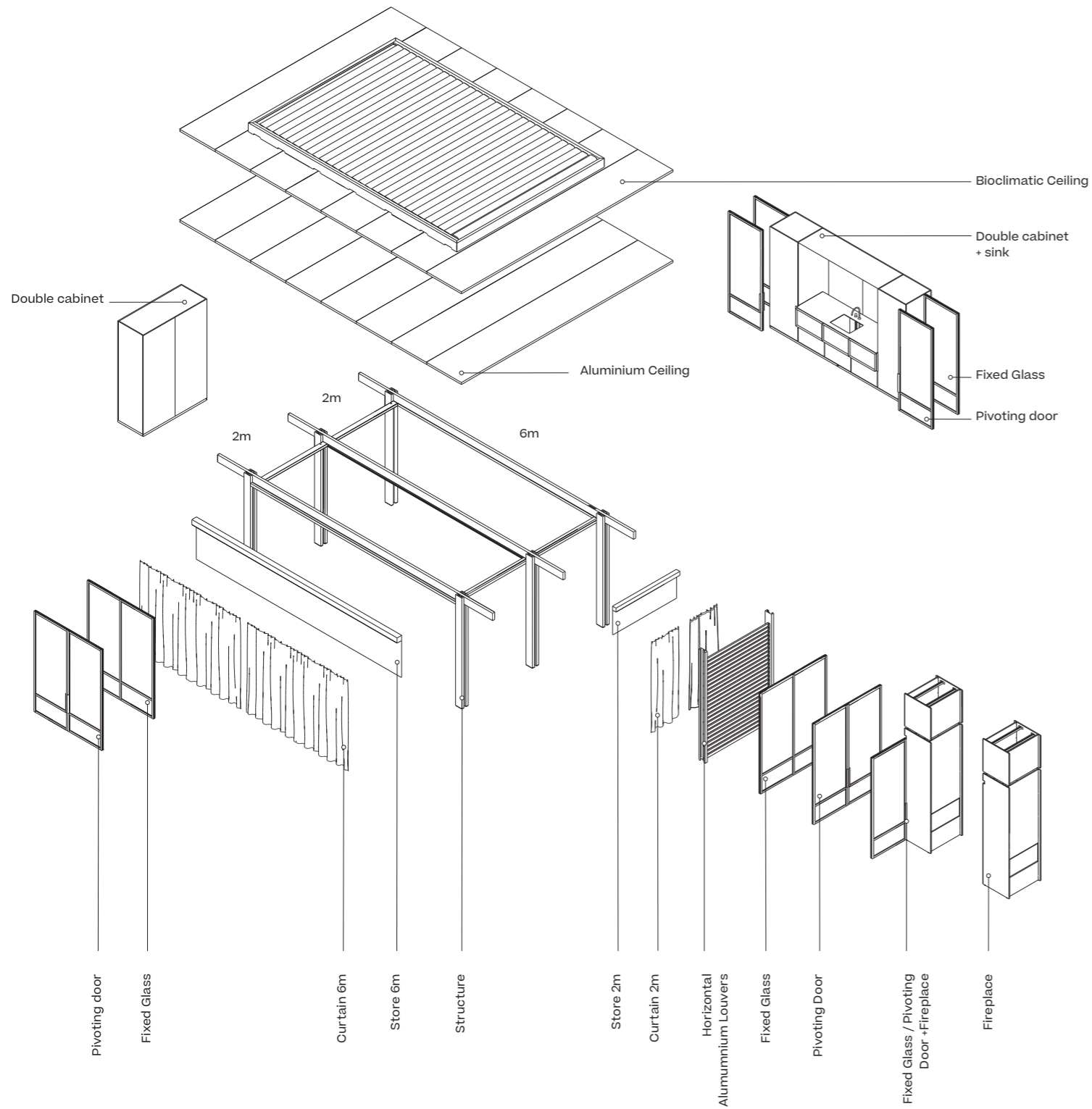


Suspended down light & Ceiling down light

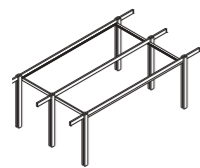


Adjustable Ceiling Spotlight

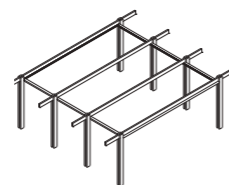




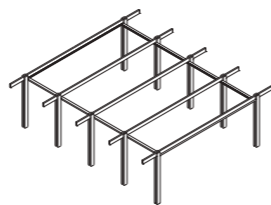
Check this QR for more technical information



6x4 Pavilion



6x6 Pavilion



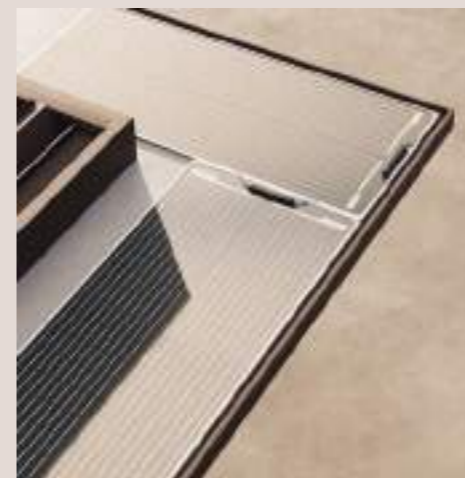
6x8 Pavilion



Switch



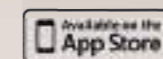
Plug



Solar panels & Battery

# Technology

The Pavilion V, by Vincent Van Duysen, offers an unprecedented level of control through its innovative interface options. Users can effortlessly manage the pavilion's features using conventional switches conveniently located throughout the structure. Alternatively, the cutting-edge Kode app, developed by Kettal, revolutionizes the user experience. Available for both iOS and Android devices, Kode empowers users to govern the pavilion's lighting independently and adjust the bioclimatic ceiling—all with a simple tap on their smartphone or tablet. The fireplace, however, is regulated with a separate remote control. Furthermore, the flexibility extends to the pavilion's infrastructure, as waterproof outlets can be seamlessly integrated into the columns, enhancing convenience and functionality. With such intuitive control mechanisms, the Pavilion V epitomizes sophistication and technological advancement, elevating the standards of contemporary living.



powered by **somfy.**

# VDL Penthouse, by Richard Neutra





In 1932, Richard Neutra built his house thanks to a donation from the Dutch philanthropist Dr Van Der Leeuw (hence the acronym VDL). This house is a particularly important example of Richard Neutra's work because it encapsulates all the architectural theories that he first posited in his book *Wie Baut Amerika?*, 1927 and later on in his more philosophical reflections *Survival Through Design*, 1953.

Seven years later, when the family had grown, he built an annex in the garden. In 1963, the house was devastated by fire, leaving only the annex standing. At that time, Richard Neutra and his son and colleague Dion Neutra rebuilt the house and added a solarium/atrium on top of the original structure. He incorporated everything he had learned over the years in this reconstruction: modularity, natural climate control, water roofs, interaction with the natural environment, technological advances, etc.

Apart from being his home, the VDL Research House was also his office. In this building, over 30 years, he designed hundreds of international projects. Some of the most representative architects from the Modern American movement also spent time in his practice as apprentices. The house was also a meeting point for the cultural milieu of those times, with visitors such as Julius Shulman, Frank Lloyd Wright, Alvar Aalto, Charles and Ray Eames, Jørn Urtzon and László Moholy-Nagy. In 1990, on the death of Dione Neutra, Richard Neutra's wife and Dion's mother, the house was donated to the California State Polytechnic University, Pomona.



VDL Research House



More info



# Pavilion H

Experience the ultimate in outdoor living with the Outdoor Pavilion H - the fully configurable pergola that's taking the market by storm. With a range of new components that are sure to impress, including a new bioclimatic roof with cutting-edge technology and a sleek, redesigned shape, a waterproof aluminum roof, a polycarbonate roof, new canopies with slats, stylish louvers, new aluwood carpentry, and a glazed side, this pavilion is the perfect way to create a customized outdoor oasis that's uniquely yours.

But that's not all - the Outdoor H Pavilion is now smart home compatible, which means you can control everything from the lights to the fan with the Kode

app. And with the ability to configure your pavilion to your exact specifications, you can create the perfect outdoor space for relaxing, entertaining, or anything in between.

Whether you're looking to create an intimate outdoor retreat or a spacious entertainment area, the Outdoor H Pavilion has everything you need to make your vision a reality. So why wait? Upgrade your outdoor living space today with the ultimate in customizable outdoor living - the Outdoor H Pavilion.





Pavilion H







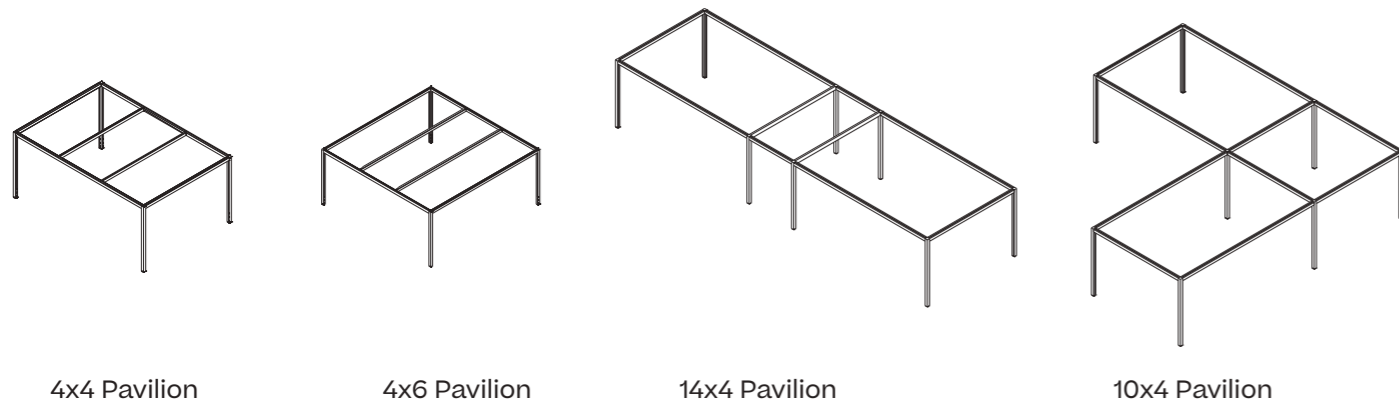
Pavilion H

This new series of pavilions brings the system even closer to architecture, as we have developed more tools for its integration in the architectural environment. The system is now able to adapt more efficiently to different uses and environments: landscapes, architecture, urban environment, maritime, mountain, and so on. The architecture now has minimal structure, not only for aesthetic reasons, but also to create open spaces that flow freely into each other by means of light, transparency, and lightness of structure. The H Pavilion is a modular structure that allows for a multitude of configurations, further enhancing its flexibility and adaptability to different environments and needs.

More technical information



Pavilion H examples

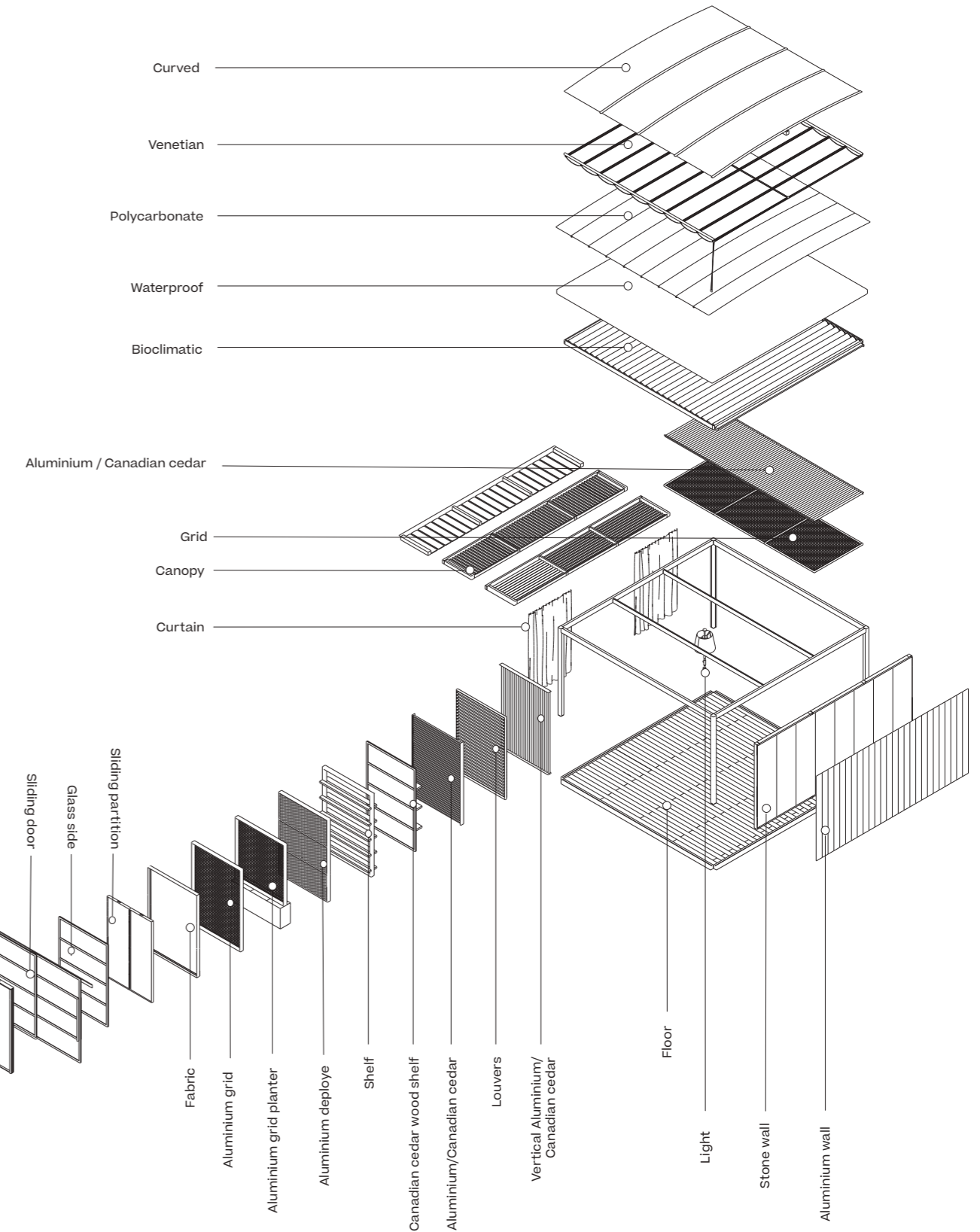


Kode new app



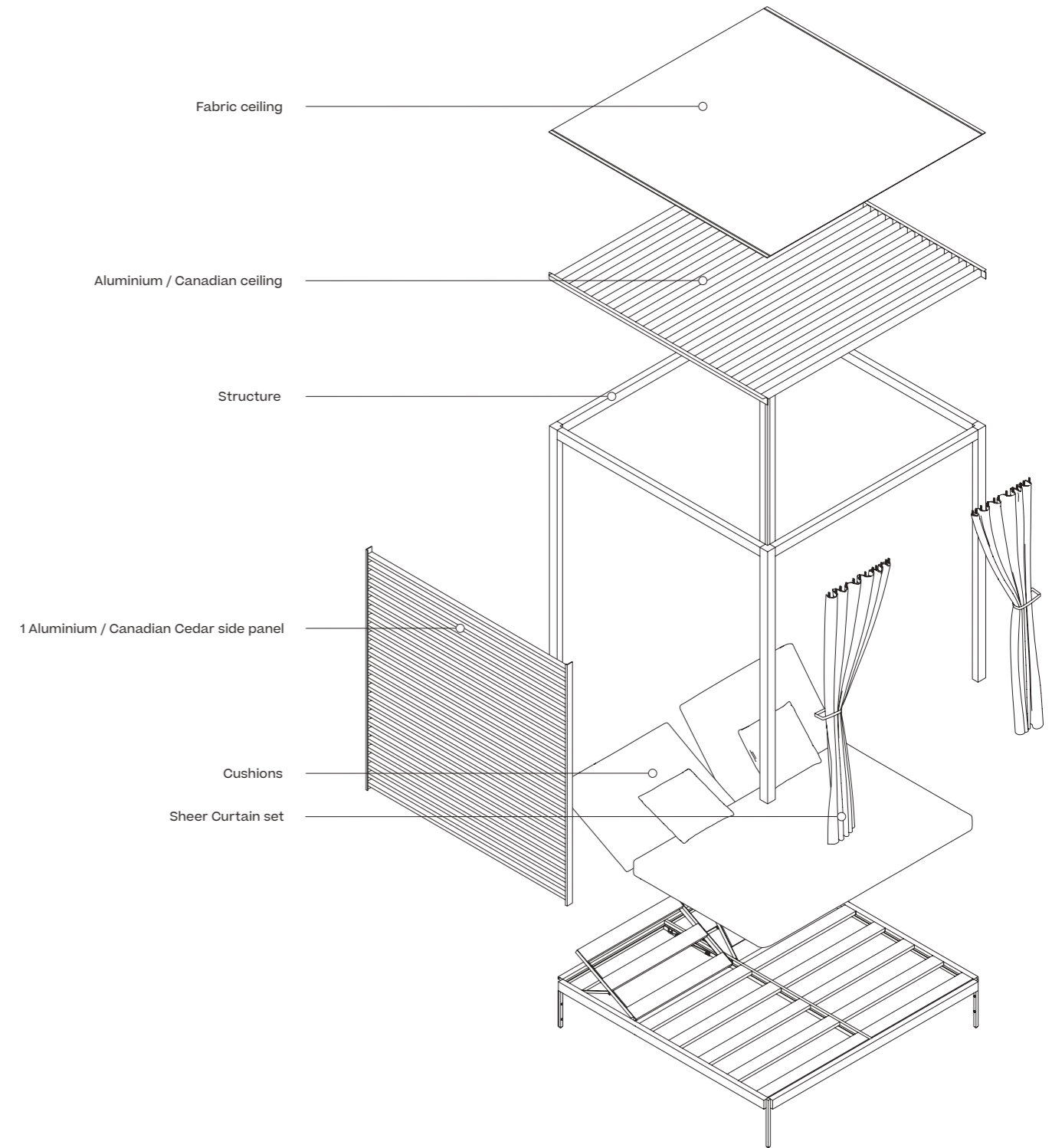
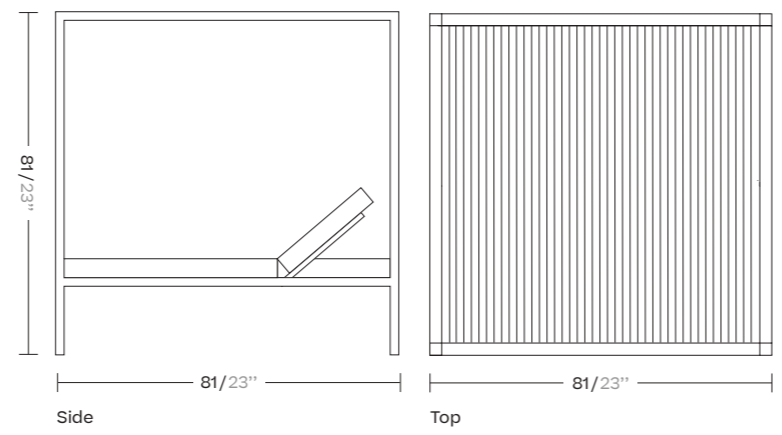
Kode turns your pavilion into a smart home that you can control from miles away or from your sofa: Adjust the ceiling opening, control the lights, temperature and ventilation, and you can even open and close the blinds. Pavilion H is now a connected smart Pavilion.

Kode app was designed with the goal of bringing mobility and intelligence into one parallel action. With it, Kettal's Pavilion H users can now control and master the various functionalities at various distances from their Pavilion H via their cell phones.



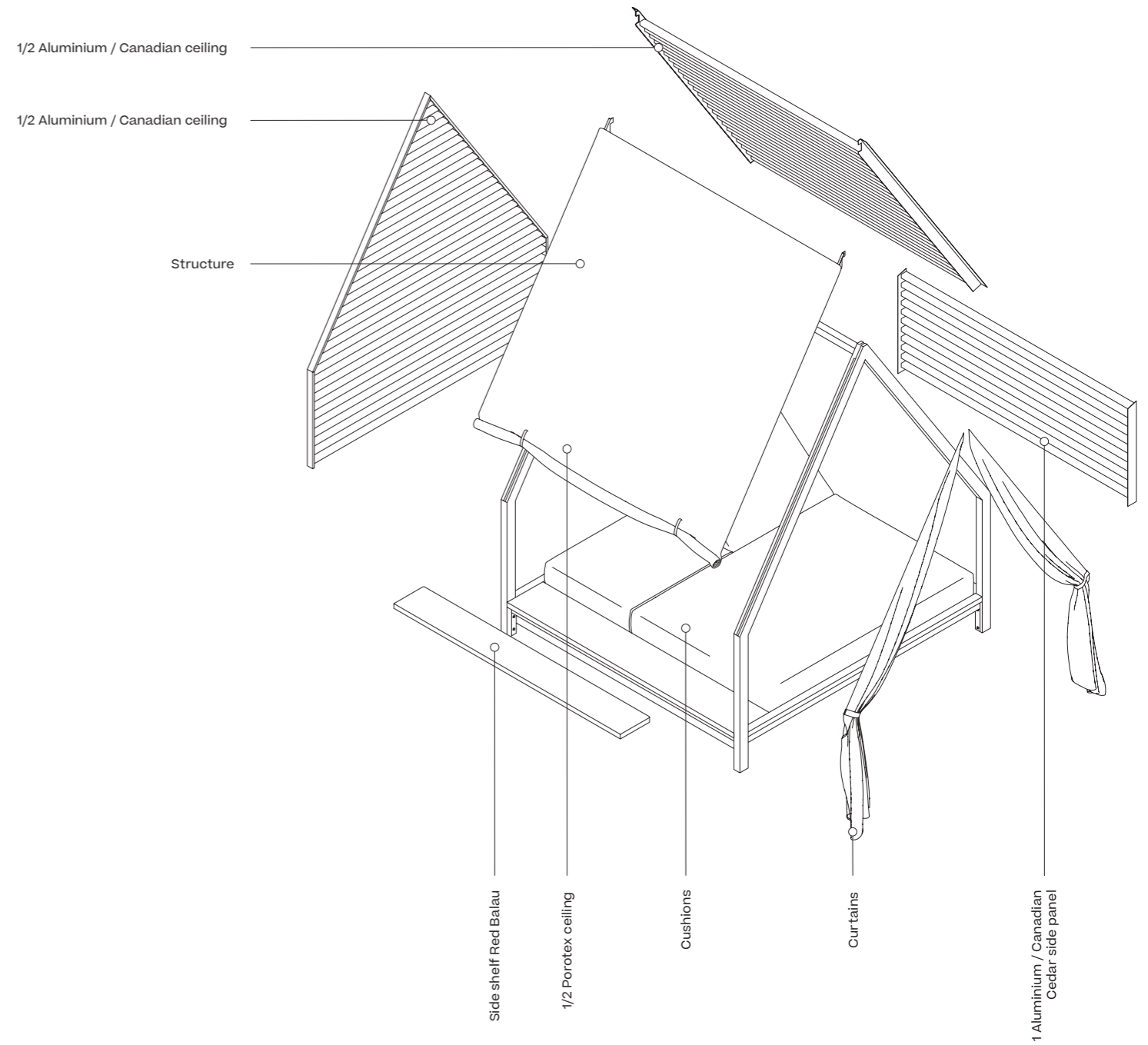
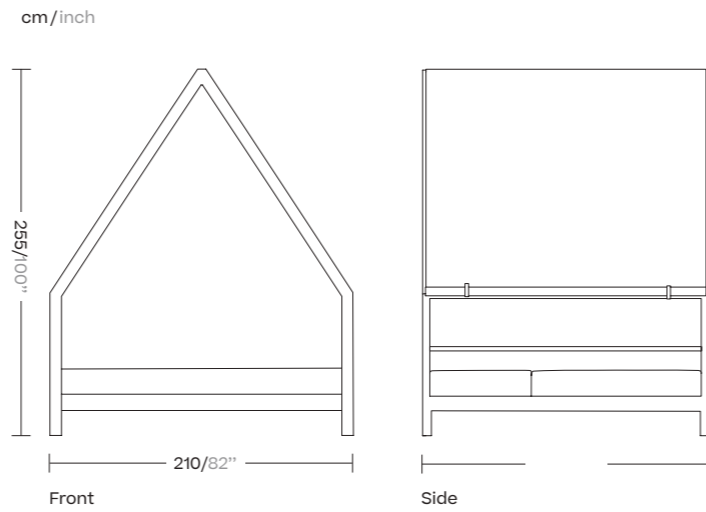
# Daybed

Daybed uses modern architectural forms that highlight the nature of outdoor environments.

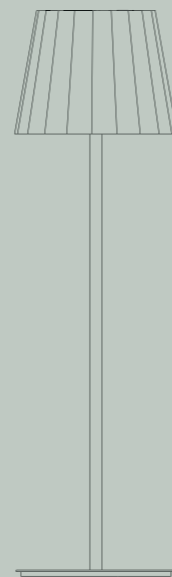
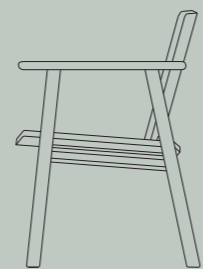
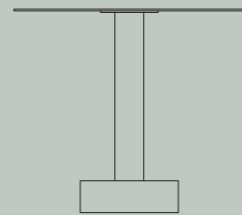
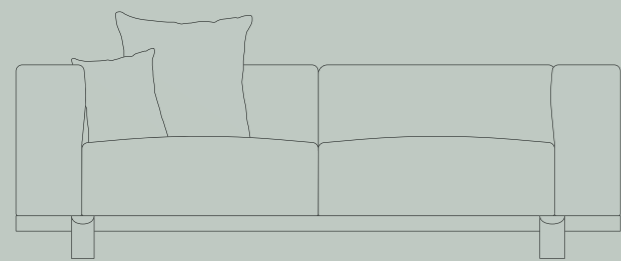


# Cottage

Cottage is a charming spot, a place in which to relax in comfort, meditate, rest or simply pass the time in the company of a good book, enjoying the air and the light. It is the definitive refuge in which to enjoy the outdoors.



# Furniture



Versatile and timeless furniture designed by some of the most important names in the international design scene.

The furniture collection, which is suitable for both indoors and outdoors, is lively and expressive. It features modern classic designs, with an informal and stimulating language, enriched by contemporary colors and materials.

# Passage, by Ronan Bouroullec

Passage as a concept is highly ambiguous and versatile and can be used to describe numerous actions and situations. Passage relates to movement, it describes passing or movement from one place to another, in relation to travel, literature or music.

The Passage chair has any number of uses; it can seamlessly pass from one situation to another, from one place to another, from one use to another... It can be placed indoors or outdoors, displayed in a public place or kept in the comfort of home, in an urban environment or in the country.

Passage is made of aluminium, because this light, resistant material best represents the changing nature of the chair. As well as being recycled and recyclable, it is highly durable, whatever its use, which greatly reduces the carbon footprint left by its manufacture.

Two important parts create the PASSAGE aluminium chair's unpretentious structure: firstly, a very simple tubular structure, which then supports the backrest and seat, manufactured as a single piece of extruded aluminium. The lightness and flexibility of the seat finishes give the object its unique capacity for adaptation.



















Passage Outdoor

Stackable chair

KSB500100



Stackable dining armchair

KSB500400



Stackable Club armchair

KSB501300



Dining rectangular tables

KSB502100 220 x 100 / KSB502200 280 x 100



Dining square table

KSB502000 100x100



Centre table

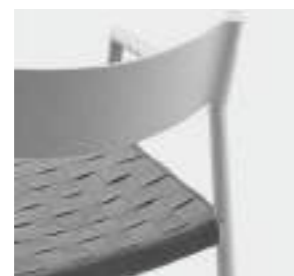
KSB502300 100x100



Seat options



Cabo Rope



Straps



Synthetic Fiber



Aluminium  
(only available for Chair & Stackable armchair)

Table top



Aluminium  
Table top always Textured Paint  
Legs Glossy or Textured Paint

Passage Indoor

Stackable chair

KSB500100



Dining armchair non stackable

KSB500700



Stackable Club armchair

KSB501300



Dining rectangular tables

KSB502100 220 x 100 / KSB502200 280 x 100



Dining square table

KSB502000 100x100



Centre table

KSB502300 100x100



Seat options



Tapissée



Oak Veneer



Oak Veneer Black

Table top



Oak Veneer  
(Legs Glossy or Textured)



Oak Veneer Black  
(Legs Glossy or Textured)



Passage color options

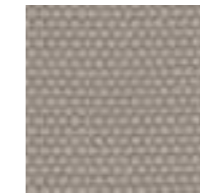
Blanc d'ivoire version



CH1 Blanc Ivoire Glossy Paint



CF1 Blanc Ivoire Textured



CR1 Cotton Strap



O3T Snowcap Terrain Elements fabric



Papiro / Synthetic fiber



101 Blanc Ivoire Cabo Rope



Oak Veneer  
Oak Ven. Black Lacquer

Noir d'ivoire Version



CH2 Noir d'Ivoire Glossy Paint



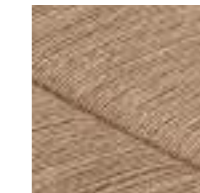
CF2 Noir d'Ivoire Textured Paint



CR7 Noir d'Ivoire Strap



O1T Charcoal Terrain Elements fabric



Papiro / Synthetic fiber



111 Noir d'Ivoire Cabo Rope



Oak Veneer  
Oak Ven. Black Lacquer

Terre Sienne Version



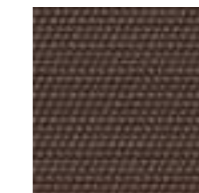
CH3 Terre Sienne Glossy Paint



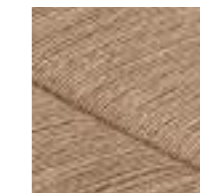
CF3 Terre Sienne Textured Paint



CR3 Plume Thistle Strap



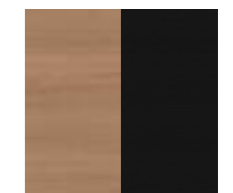
13T Glove Terrain Elements fabric



Papiro / Synthetic fiber



143 Terre Sienne Cabo Rope



Oak Veneer  
Oak Ven. Black Lacquer

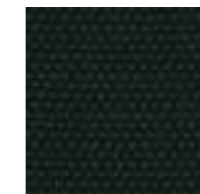
Vert



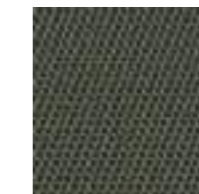
CH4 Vert Glossy Paint



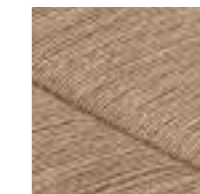
CF4 Vert Textured Paint



CR8 Vert Strap



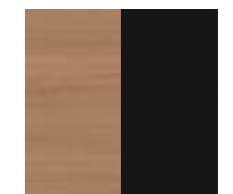
20T Peppercorn Terrain Elements fabric



Papiro / Synthetic fiber



163 Vert Cabo Rope



Oak Veneer  
Oak Ven. Black Lacquer

Anodisé Version



CF5 Anodisé Paint



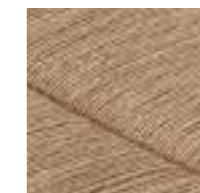
O3C Ash Textured Paint



CR0 Silver Jade Strap



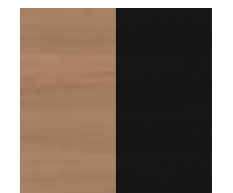
O8T Porous Grey Terrain Elements



Papiro / Synthetic fiber



103 Gris Claire Cabo Rope



Oak Veneer  
Oak Ven. Black Lacquer

# Insula, by Patricia Urquiola

The Modular Insula sofa is Patricia Urquiola's updated interpretation of traditional seating used in traditional Arab Majlis, where community members gathered to discuss events and local issues, entertain guests, build friendships, and have fun.

Formally, it is a rational modular sofa with very softened shapes and low height, with a insula in the backrest that concentrates all the protagonism of the design and provides a decidedly horizontal emphasis. It combines carefully balanced proportions as an architectural element that can be subtly integrated.

Functionally, like the original concept of Arab Majlis, the main function of the Insula sofa is socializing. The multitude of configurations allows it to adapt to all kinds of social situations, both indoors and outdoors: from the reception of an office where one can find a place to work relaxed, to resting in a home or outdoors for sunbathing and having fun. Its modular design consists of an orthogonal aluminum base with very softened shapes where the seat cushion, very plush and comfortable, is located. The two sizes of its seats allow for various types of backrests: individual, double, angular, etc.

















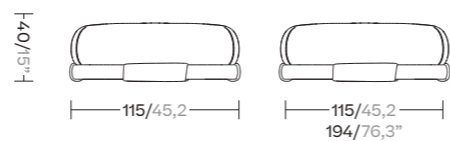






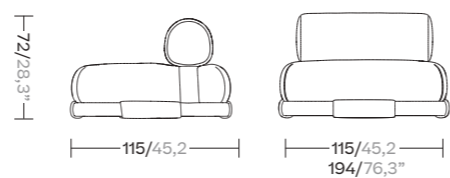
One seat module &  
Two seat module

One seat KSB600700  
Two seat KSB601000



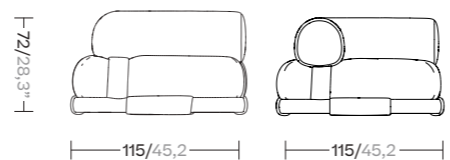
One seat module with back cushion  
Two seat module with back cushion

One seat KSB600800  
Two seat KSB601100



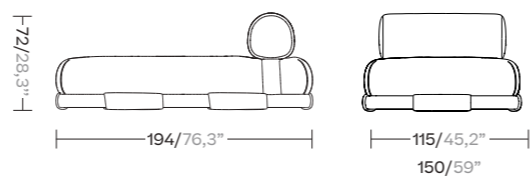
Corner module

KSB600900



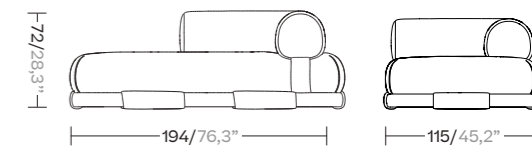
Daybed & Daybed Double

Daybed KSB601100  
Double Daybed KSB601100



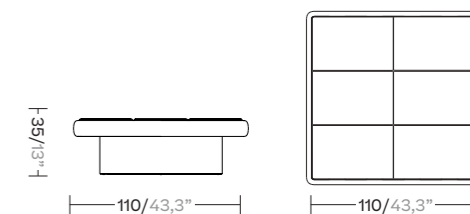
Two seat module with corner cushion

KSB601700



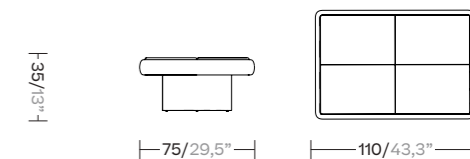
Square table

KSB601200



Rectangular table

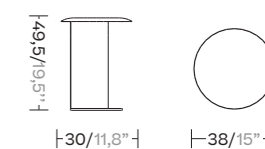
KSB601300



Side table

(charger optional indoor version)

KSB601500



# Eolias, by Antonio Citterio

Eolias Collection by Antonio Citterio, inspired by the breathtaking archipelago located off the coast of Sicily. This versatile collection includes a range of indoor and outdoor furniture pieces designed to elevate any space.

One of the collection's highlights is the Eolias Salinas series, which features a chair, club chair, and club lounge chair made from sturdy aluminum with a woven wicker detail. These pieces come in both indoor and outdoor versions, with the indoor chairs available with or without wheels for added convenience.

For those seeking a more contemporary look, the Eolias Alicudi chair offers a sleek and modern design with an aluminum frame and slatted detailing.

To complete the collection, there are two sizes of dining tables with a folding option, providing a stylish and functional solution for any dining area.





Living



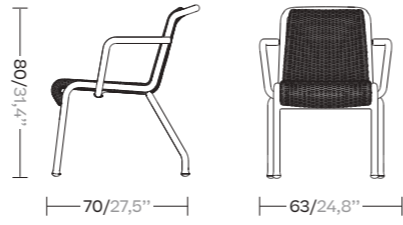
Eolias





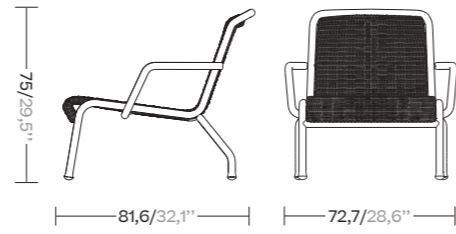
Eolias Salina  
Dining Armchair

KSB200600



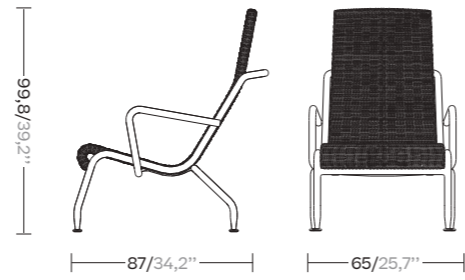
Eolias Salina  
Club Armchair

KSB200800



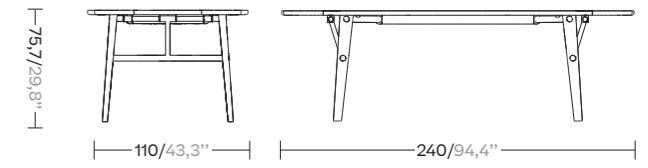
Eolias Salina  
Lounge Club

KSB200900



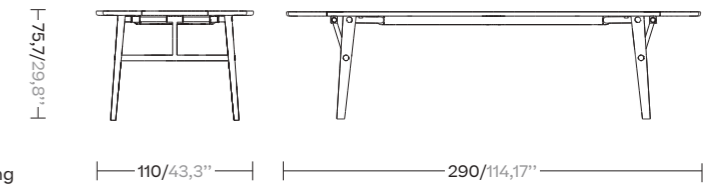
Eolias Lipari  
Dining table

KSB201000 folding



Eolias Lipari  
Dining table

KSB201100 folding



# Giro, by Vincent Van Duysen

The core idea and insight behind Giro was a different usage of the rope. It is sewn together in order to create the shape of the product itself. A big source of inspiration was the Orkney Chair. This classic inspired Vincent to draw inspiration from the past with an eye on today and Kettal's technological expertise. Originally based on a natural rope material, it has been reinterpreted through the use of the very sustainable polypropylene material which can face all kinds of weather.







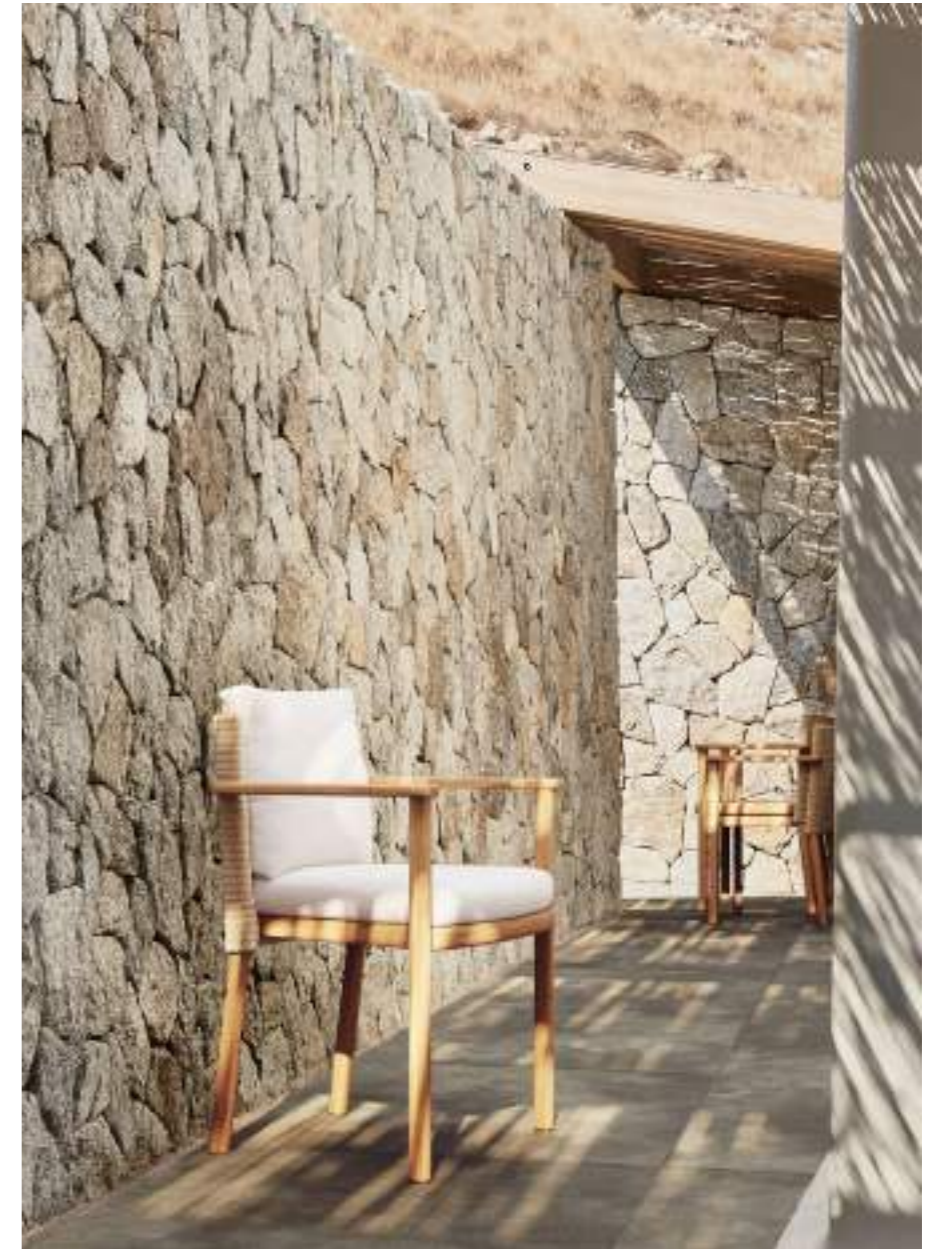








Giro





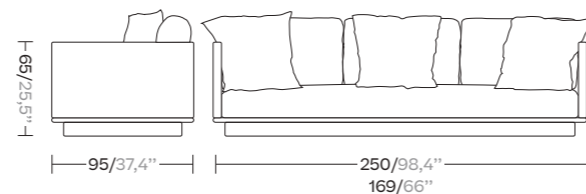






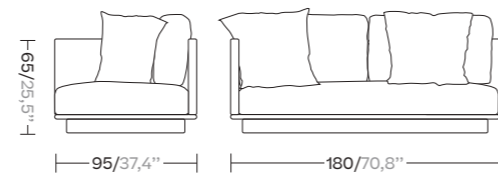
2 & 3 Seaters Sofa

KS7400400 2 seater  
KS7400500 3 seater



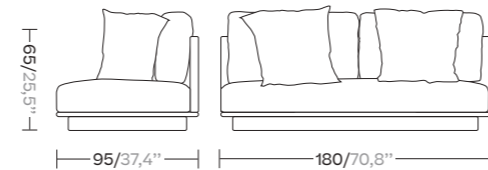
Seater Left or Right Corner module connection

KS7400600/KS7401900 teak  
KS7402700/KS7402800 aluminium



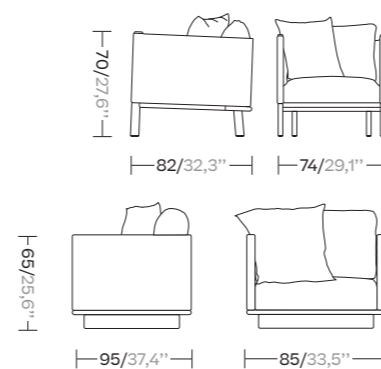
Seater Center Module

KS7400800 teak  
KS7402600 aluminium



Club Armchair & 1 seater sofa

KS7400300 (club, only teak)  
KS7402200 (1 seater sofa, only aluminium)



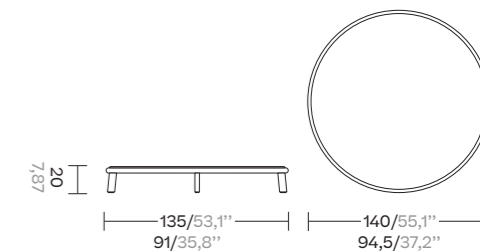
Centre Table ø90 & 135

Ceramic ø90  
KS7401200

Travertine ø90 (under porch)  
KS7403000

Ceramic ø135  
KS7401300

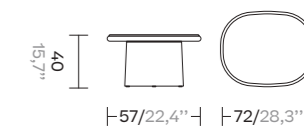
Travertine ø135 (under porch)  
KS7403100



Side Table

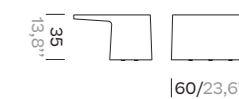
Ceramic  
KS7401100

Travertine (under porch)  
KS7402900



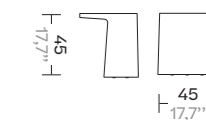
Low Side Table

KS7400900



High Side Table

KS7401000





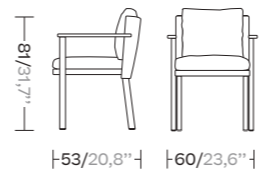
Folding Dining Armchair

KS7400100



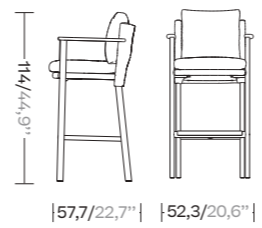
Stackable Dining Armchair

KS7400200



Bar stool

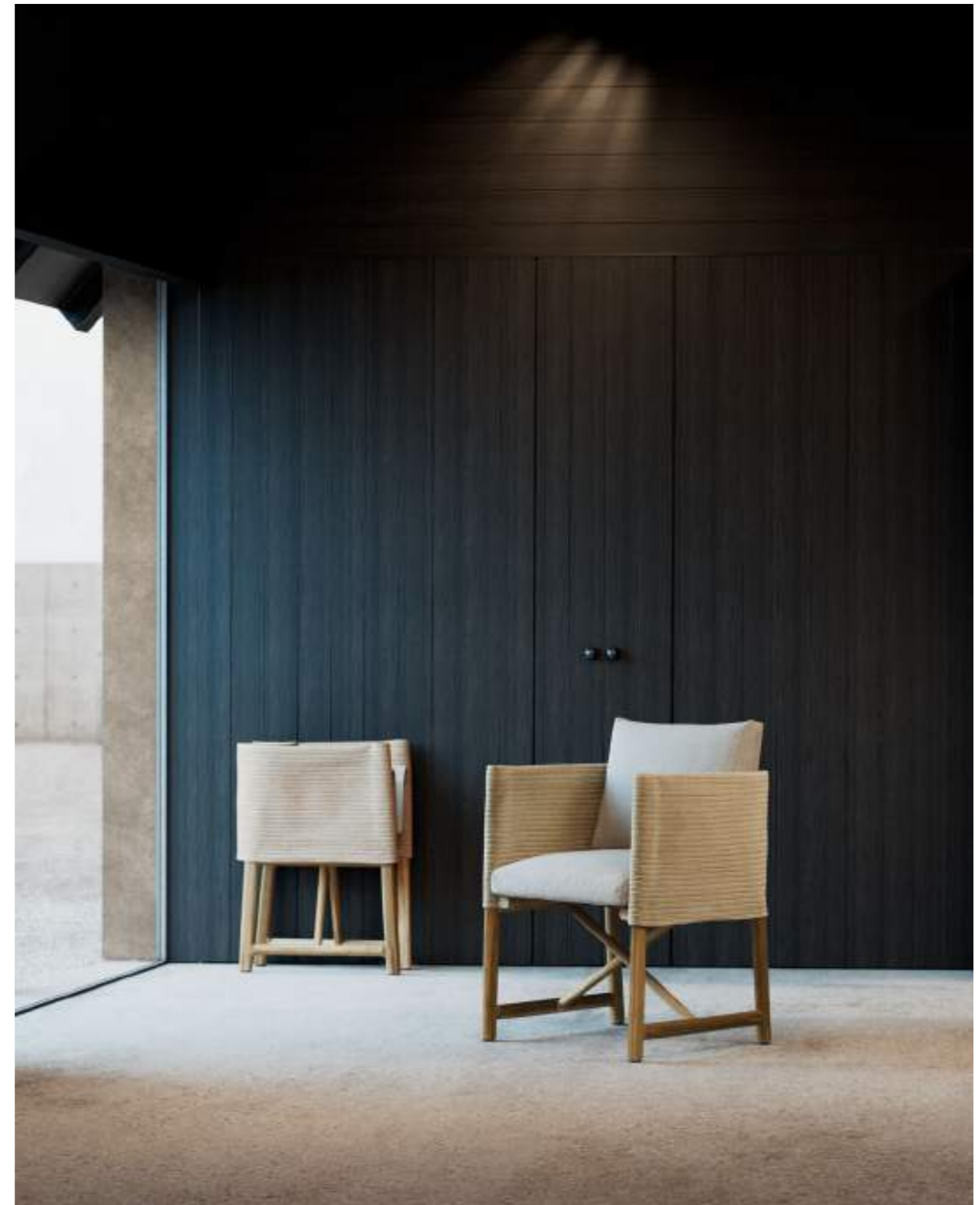
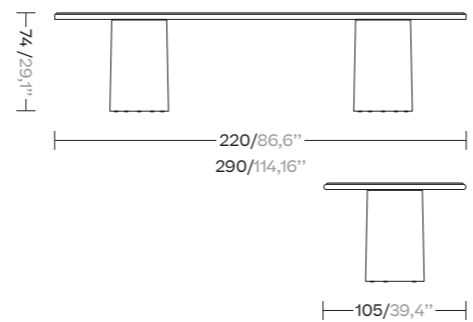
KS7403400



Dining Tables

Ceramic  
220x100: KS7401500  
290x100: KS7401600

Travertine (under porch)  
220x100: KS7403200  
290x100: KS7403300



# Molo, by Rodolfo Dordoni

This is an example of a modular sofa in its purest form. Its orthogonal geometry is based on a rectangular modularity design, which means it can be easily adapted to suit any situation and optimize the space in which it sits. Each module can be taken apart and re-organized, creating new uses and configurations.

The design is aesthetically minimalistic with intentionally oversized pieces. On the other hand, the decorative elements have been consciously de-emphasized in order to give centre stage to the various combinations of fabric, colours and carefully selected details.





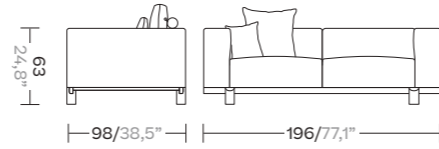






2 Seater Sofa

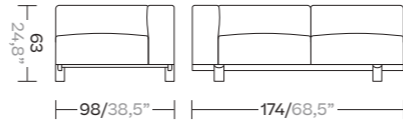
KS42XX...  
KS421XX...



2 Seater Left Corner & Right Corner

Right  
KS420XX...  
KS421XX...

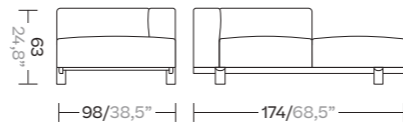
Left  
KS420XX...  
KS421XX...



2 Seater Left Corner Open & Right Corner Open

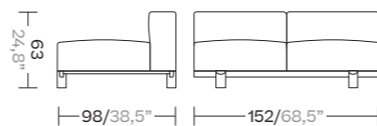
Right  
KS420XX...  
KS421XX...

Left  
KS420XX...  
KS421XX...



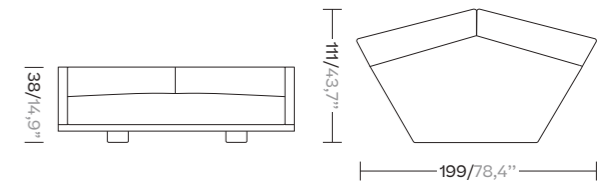
2 Seater Center Corner

KS420XX...  
KS421XX...



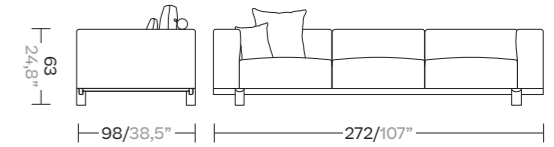
Corner

42540000TB  
425400R0TB  
4254087GTB  
4254089GTB



3 Seater Sofa

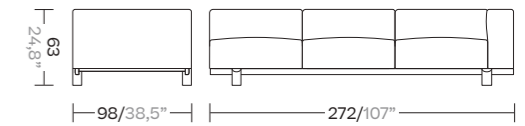
KS420XX...  
KS421XX...  
KS422XX...



3-Seater Right Corner & Left Corner

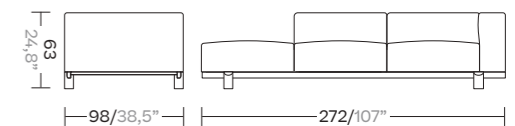
Right  
KS420XX...  
KS421XX...  
KS422XX...

Left  
KS420XX...  
KS421XX...



3 Seater Left Corner Open & Right Corner

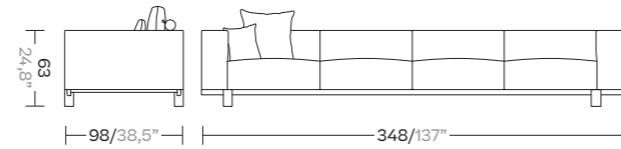
Right  
KS420XX...  
KS421XX...





4 Seater Sofa

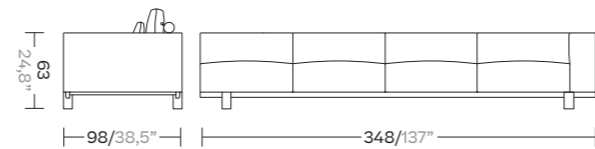
KS420XX...  
KS421XX...



4-seater Right corner & Left Corner

Right  
KS420XX...  
KS421XX...

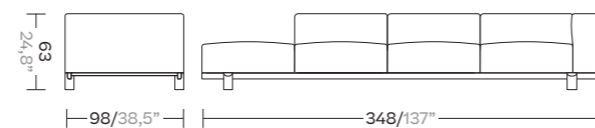
Left  
KS420XX...  
KS422XX...



4 Seater Left Corner Open & Right Corner Open

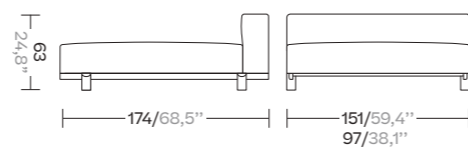
Right  
KS420XX...  
KS421XX...

Left  
KS420XX...  
KS422XX...



Single & Double Chaise Lounge

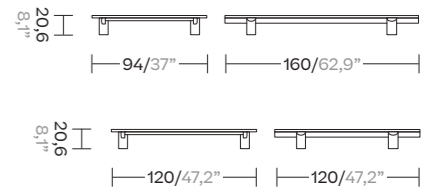
KS4211100 single chaise longue  
KS4211200 double chaise longue



Centre Table 160x94 and 120x120

Centre table 160x94  
KS4210600

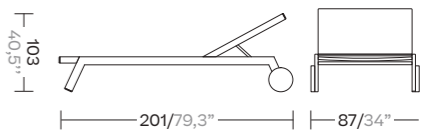
Centre table 120x120  
KS4210700



Deckchair with Small Wheels & with Wheels

With small wheels  
KS4210800

With wheels  
KS4210900



# Il Colonnato, by Mario Bellini

In this project, Mario Bellini took his inspiration from a basic elemental structure in architecture. His design emulated the colonnade of classical architecture, in which a sequence of columns supports a portico, in this case a table top. The base is a visually closed volume, despite being materially open. When seen from a different viewpoint, perception changes completely, as the columns no longer overlap and the space appears empty.



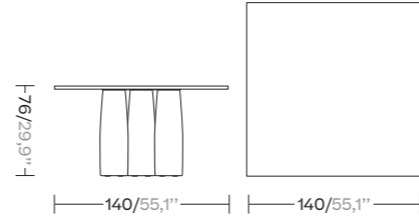






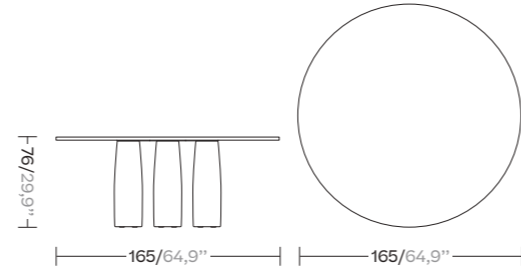
Table Square 140x140

- KSA1-004-00: 4 legs / Teak
- KSA1-001-00: 5 legs / Teak
- KSA1-010-00: 4 legs / Minera Stone
- KSA1-007-00: 5 legs / Minera Stone
- KSA1-016-00: 4 legs / Marble
- KSA1-013-00: 5 legs / Marble



Dining Table ø165

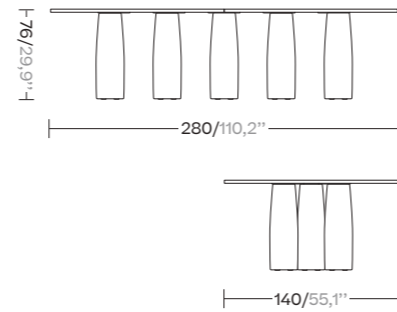
- KSA1-006-00: 4 legs / Teak
- KSA1-003-00: 5 legs / Teak
- KSA1-012-00: 4 legs / Minera Stone
- KSA1-009-00: 5 legs / Minera Stone
- KSA1-018-00: 4 legs / Marble
- KSA1-015-00: 5 legs / Marble



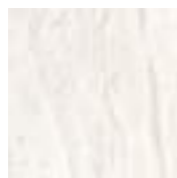
Dining Table 280x140\*

\*Two parts 140 x 140, union plate included

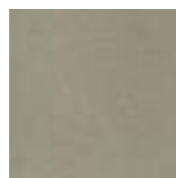
- KSA1-005-00: 6 legs / Teak
- KSA1-002-00: 8 legs / Teak
- KSA1-011-00: 6 legs / Minera stone
- KSA1-008-00: 8 legs / Minera stone
- KSA1-017-00: 6 legs / Marble
- KSA1-014-00: 8 legs / Marble



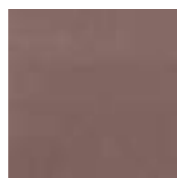
Teak



Marble



Antique Rose  
(Minera stones)



Atlas  
(Minera stones)



# Grand Bitta, by Rodolfo Dordoni

The Grand Bitta collection features a unique combination of aluminum and teak legs, seats made of braided polyester, and comfortable cushions, with teak or stone table tops, all crafted from waterproof materials.

The designer's intention was to create a dense braiding that would allow air to flow through, evocative of the braiding used to moor boats (hence the name "Bitta," which means "mooring" in Italian). The result is a collection of pieces that appear light and airy, while

also providing cozy, natural-hued nests to unwind in. Crafted from a blend of ropes, teak, and aluminum, the Daybed is fully customizable with a range of rope and fabric colors to suit your style. Designed with outdoor lounging in mind, the Daybed's generous size and comfortable design make it the perfect addition to any patio or poolside. Enjoy luxurious relaxation in style with the Grand Bitta Daybed.







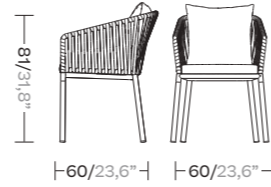






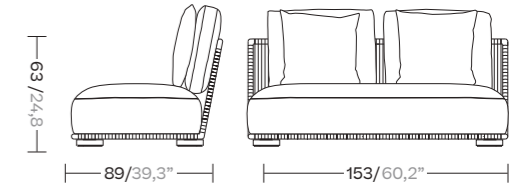
Dining armchair

KS7003700



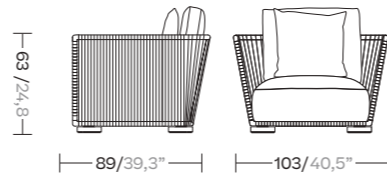
Central module

KS7003500



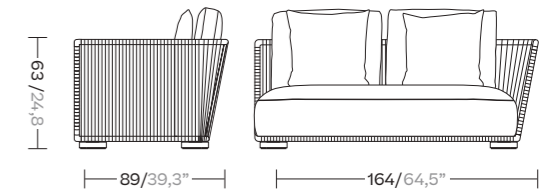
Club Armchair

KS7003000



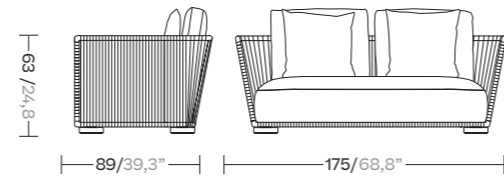
Right module

KS7003400



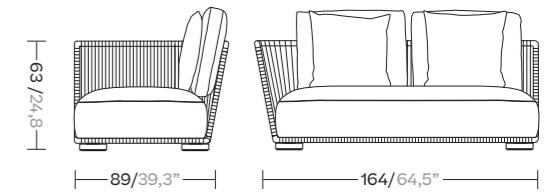
2-seater sofa

KS7003100



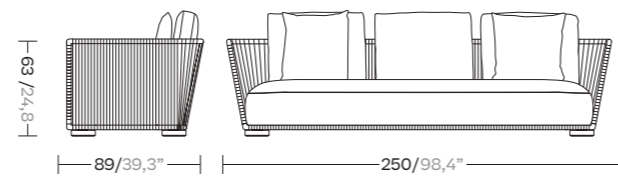
Left module

KS7003300



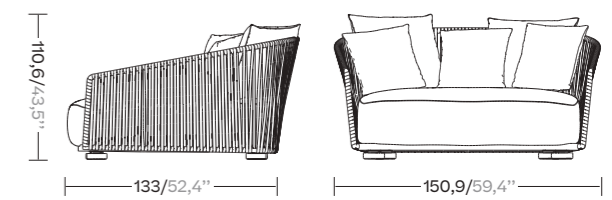
3-seater sofa

KS7003200



Daybed

KS7003600



# Bitta & Bitta Lounge, by Rodolfo Dordoni

Grand Bitta is characterized by a combination of aluminum and teak legs, seats of braided polyester and comfortable cushions, with teak or stone table tops - all while using all waterproof materials. "The intention of the designer was to create dense braiding that would

still let the air through, reminiscent of the braiding of the ropes used to moor boats (hence the name Bitta, which means 'mooring' in Italian), which makes the pieces look lightweight but, at the same time, they look just like cozy nests in natural colors to sit back and relax in."



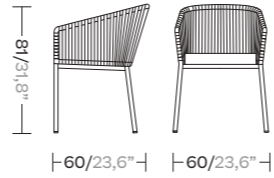




Dining Armchair Bela Rope

Aluminium legs  
KS7000100

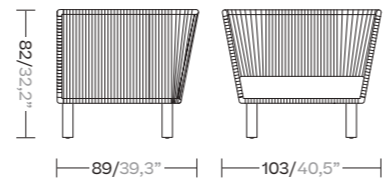
Teak legs  
KS7000100



Club Armchair Bela Rope

Aluminium legs  
KS7000300

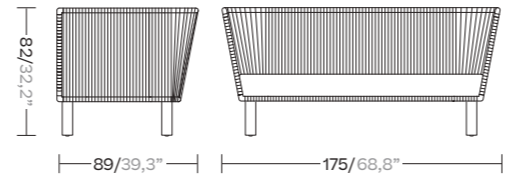
Teak legs  
KS7000300



2 Seater Sofa Bela Rope

Aluminium legs  
KS7001200

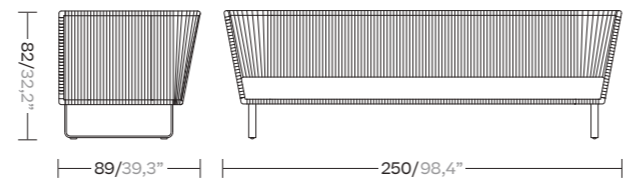
Teak legs  
KS7001200



3-Seater Sofa Bela Rope

Aluminium legs  
KS7001400

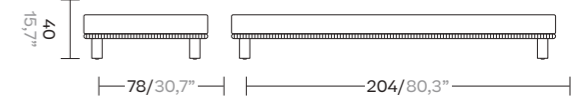
Teak legs  
KS7001400



Deckchair Stool Module

Aluminium legs  
KS7000600

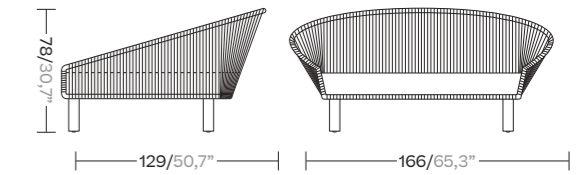
Teak legs  
KS7000600



Daybed

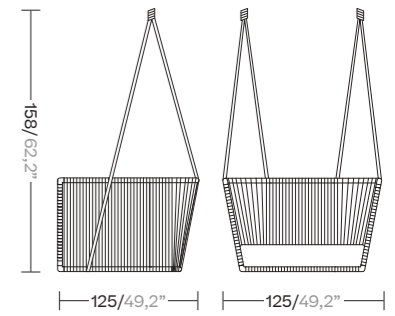
Aluminium legs  
KS7002200

Teak legs  
KS7002200



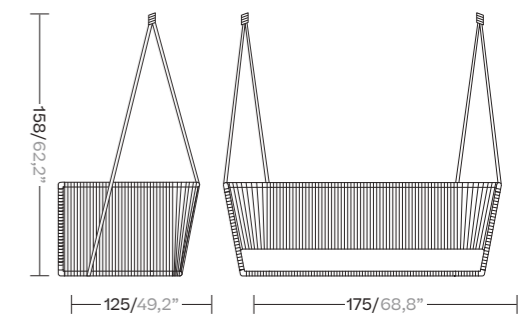
Club Swing Rope Set

KS7000800



2 Seater Swing Rope Set

KS7000900





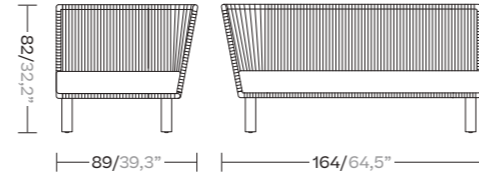
Left and right Corner Module

Left & Aluminium legs  
KS7001600

Left & Teak legs  
KS7001600

Right & Aluminium legs  
KS7001800

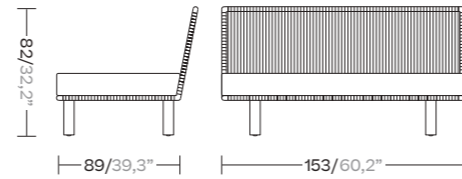
Right & Teak legs  
KS7001800



Central Module Bela Rope

Aluminium legs  
KS7002000

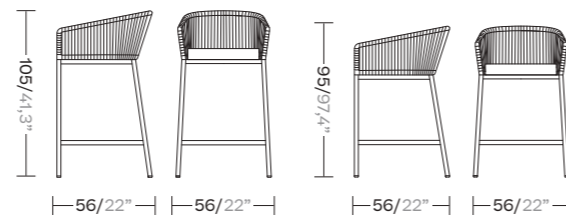
Teak legs  
KS7002000



Bar Stool Bela Rope & Counter Height Bar Stool

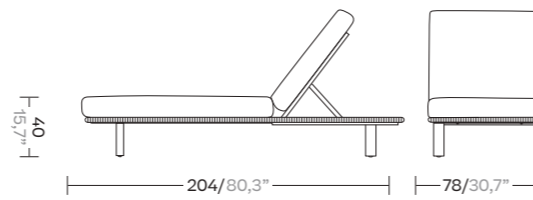
Bar stool  
KS7002600

Counter height Bar stool  
KS7002800



Deckchair Module

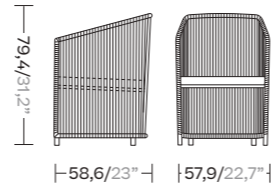
KS7000700





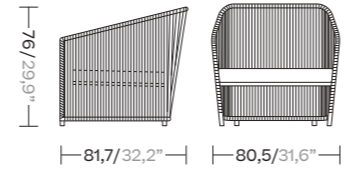
Dining Armchair

KS7L00100



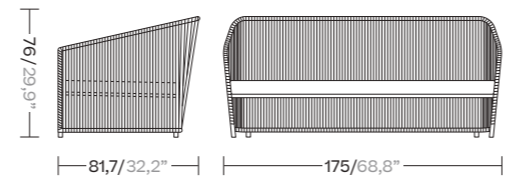
Club Armchair Rope & Parallel

KS7L00300



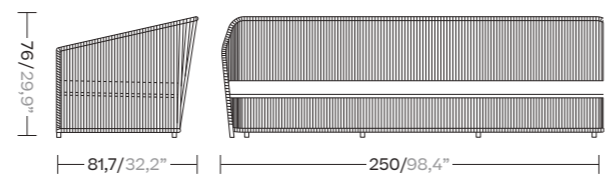
2-Seater Sofa Rope & Parallel

KS7L00500



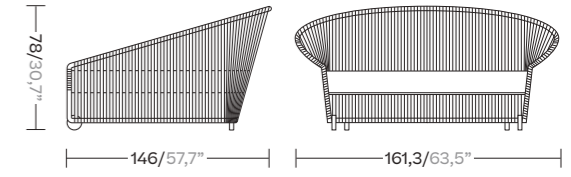
3-Seater Rope & Parallel

KS7L00700



Daybed Rope & Parallel

KS7L00900



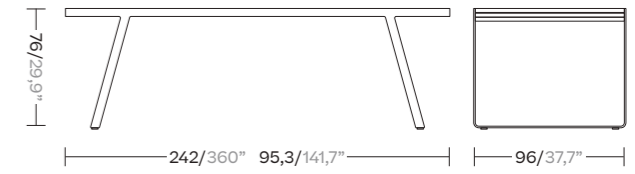
Centre Table

KS7002400



Dining Table Extendable 8-12 Guests

KS7002500





# Plumon, by Patricia Urquiola

The new outdoor family designed by Patricia Urquiola for Kettal is based on the concept of clothing, on dressing and undressing furniture. Adopting a tailoring approach, Patricia Urquiola designs the new family with a reference to the characteristic Brazilian spirit, which lives in abundant, roomy, comfortable furnishings, somehow evocative of distant landscapes and cultures. For Plumon, Urquiola designs a light structure, on which a tailored and padded dress is 'moored', wrapped. This

ribbed padding, characterized by stitching, as well as being an aesthetic figure, fulfills the comfort of the product. It is the fit that guides the aesthetics. With a few simple gestures, the dress is placed on the rigid teak structure and embraces it. An extreme ease of use that becomes a real plus for an outdoor collection. A comfort that is also emphasized visually, thanks to the padded dress that generously also embraces the armrests and the outside of the backrest.









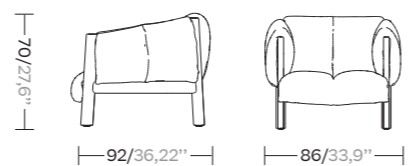
Dining Armchair contract

KSA801400



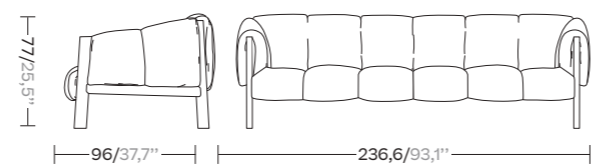
Club armchair

KSA801100



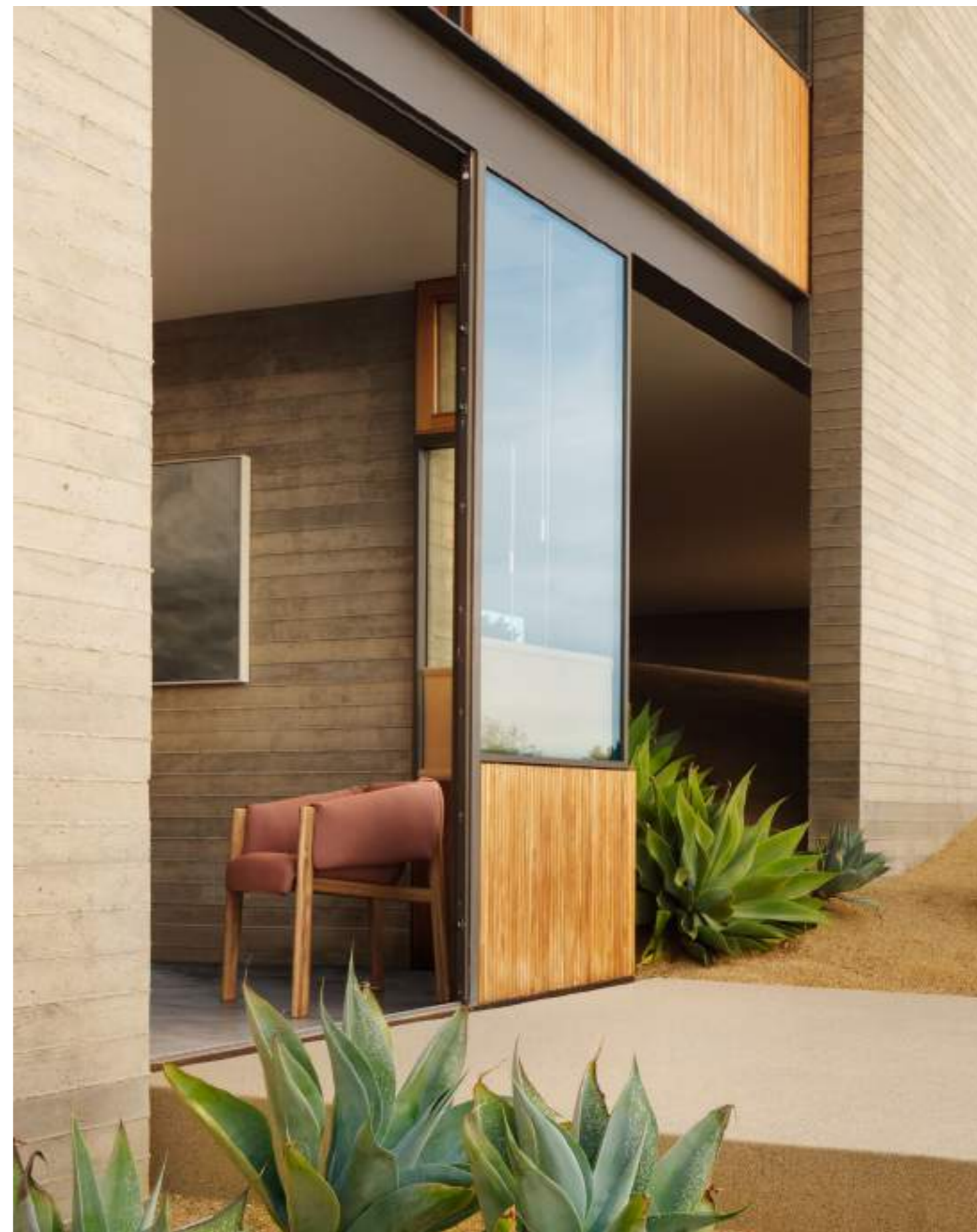
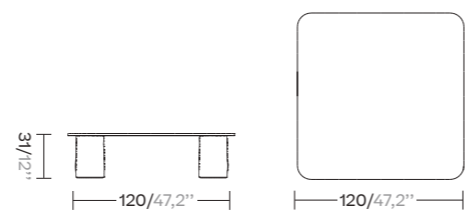
3 Seaters Sofa

KSA800200



Central table

KSA801000



# Boma, by Rodolfo Dordoni

The Boma collection was born from the need for high performance in outdoor environments, without sacrificing on the increasing demand for comfort.

The structure is organized around a frame entirely made of aluminum, which is capable of hiding in the essentiality of its lines both the quality of the materials used and the possibility of easy articulation in different compositions.



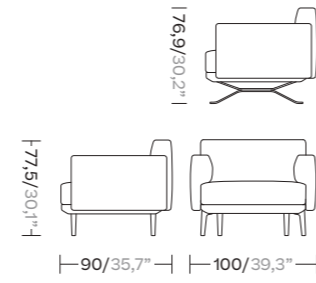






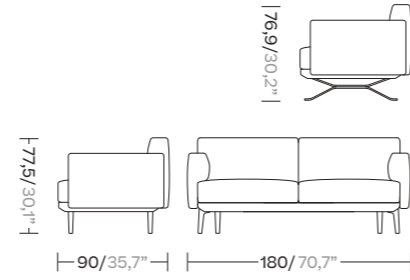
Club Armchair

KS2500100



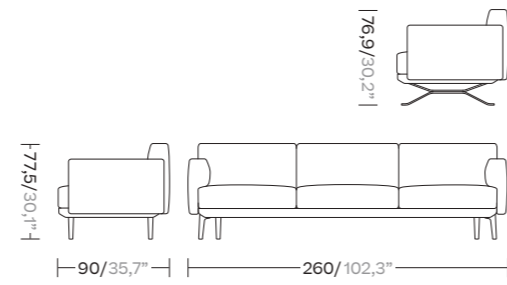
2-Seater Sofa

KS2500200



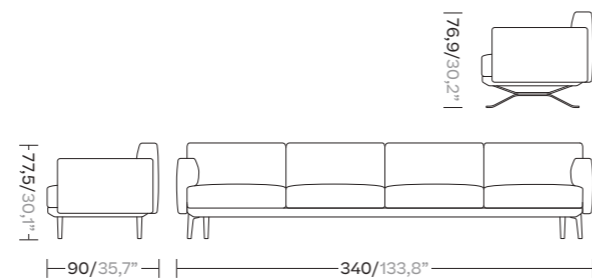
3-Seater Sofa

KS2500300



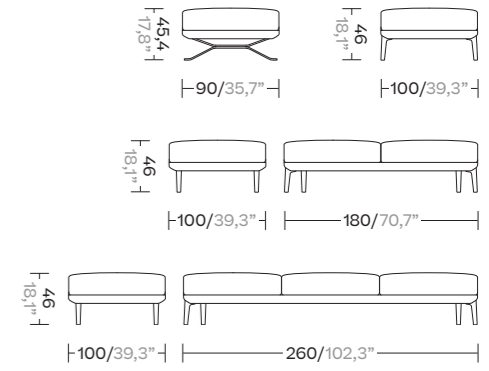
4-Seater Sofa

KS2500400



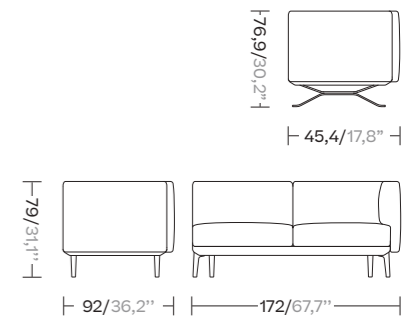
Bench

1-Seater  
KS2500800  
2-Seater  
KS2500900  
3-Seater  
KS2501000



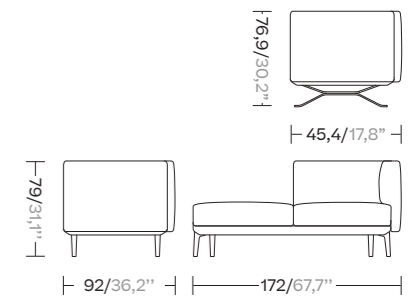
2 Seater Right & Left Corner Connection & end

Right (end)  
KS2501400  
Left (end)  
KS2501400  
Right corner  
KS2501200  
Left corner  
KS2501500



2 Seater Right & Left Corner Connection-Open

Right  
KS2501300  
Left  
KS2501600



See the Boma concept scanning this QR code



# Riva, by Jasper Morisson

The Riva collection of outdoor furniture is above all about achieving a certain atmosphere for the better enjoyment of outdoor space. The plank construction of seat and back follows a long and varied tradition of outdoor chairs made in similar ways, and which, in this case, actually provides a high level of comfort and good looks too.

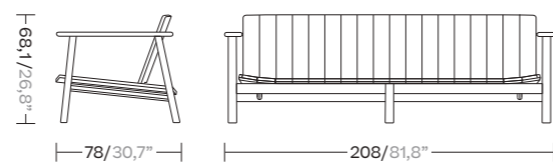






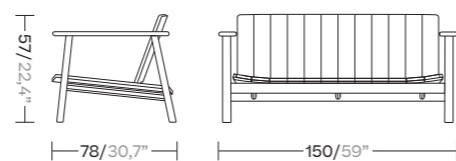
3-seater Sofa

KS2600700



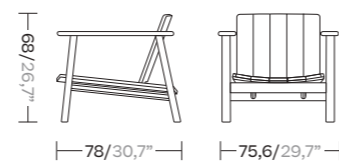
2-seater Sofa

KS2600600



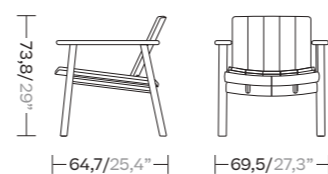
1-seater Sofa

KS2600500



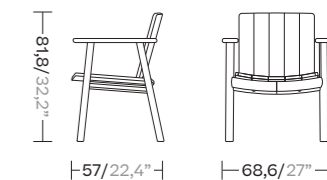
Low club armchair

KS2600300



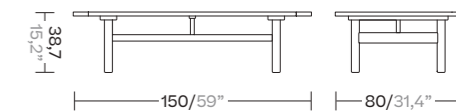
Dining Armchair

KS2600100



Centre Table 150x80

KS2600800



Living

# Mesh, by Patricia Urquiola

The Mesh collection recalls architectural facades, which filter the surrounding environment without stopping the light and air flow. Industrial and natural materials, hard and soft surfaces, transparent and solid volumes are put face to face in order to create this family of outdoor furniture based on contrasts.

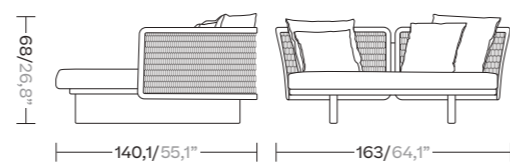






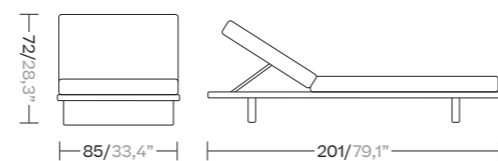
Daybed

KS1701000



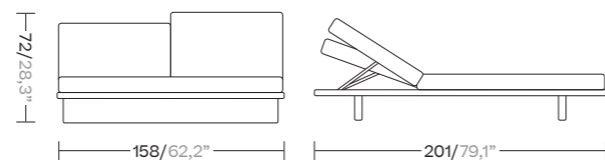
Deckchair

KS1700800



Two Places Deck Chair

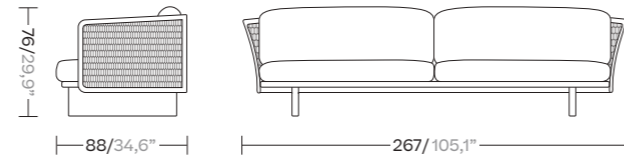
KS1700900





3 Seater Sofa

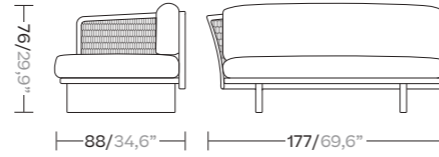
KS1700100



Left & Right Corner Module End

Left  
KS1700400

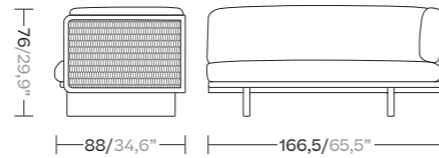
Right  
KS1700500



Left Corner Module Connection

Left  
KS1700200

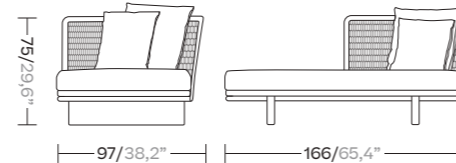
Right  
KS1700300



Right Deck Chair Module

Left  
KS1701100

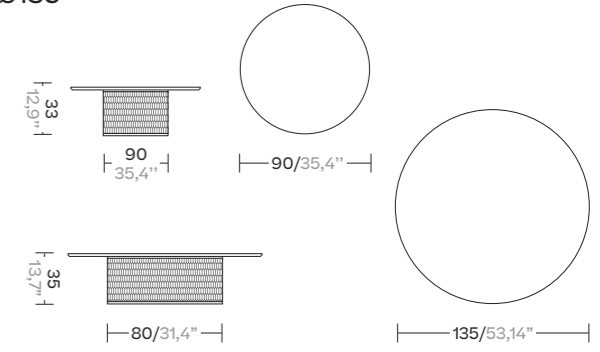
Right  
KS1701200



Centre Table ø90 ø135

ø90  
KS1702200

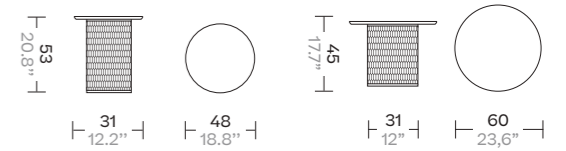
ø135  
KS1702300



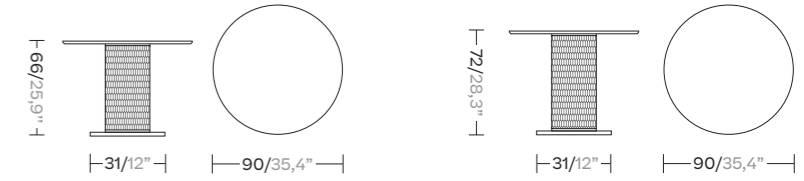
SideTable ø48 and ø60

ø48  
KS1702000

ø60  
KS1702100



Dining Table ø180 ø135 ø90

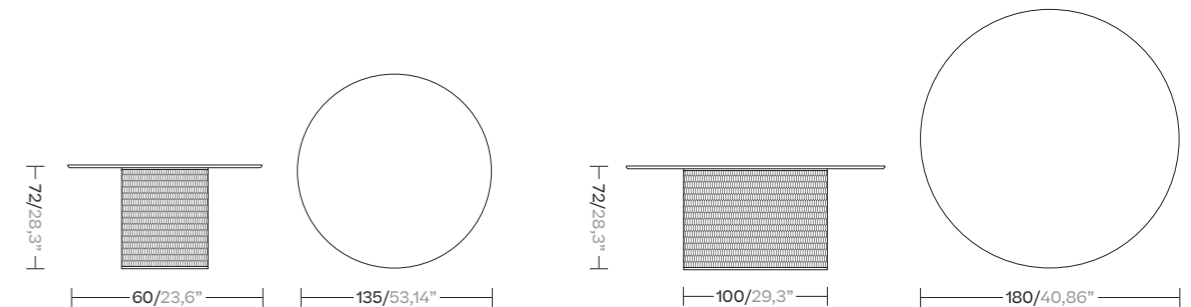


Low Dining Table  
KS1701900

Dining Table  
KS1701800

ø135  
KS1701600

ø180  
KS1701700



Living

# Net, by Kettal Studio

The Net collection conserves a classic structure. Elegant with smooth lines, it gives a calming and attractive appearance. Woven cords, aluminum and tubing come together to provide a light, handcrafted look.

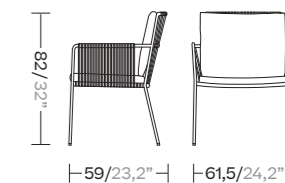




Dining Armchair & Lite Dining Armchair

Dining  
KS6800100

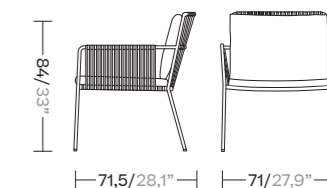
Lite  
KS6800200



Club Armchair & Lite Club Armchair

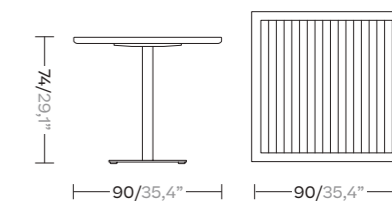
Club  
KS6800900

Lite  
KS6801000



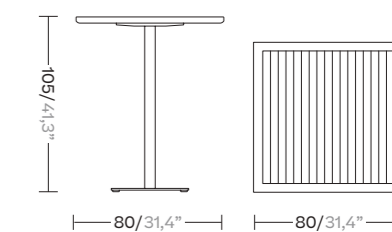
Dining Table

KS6800500



Bar Table

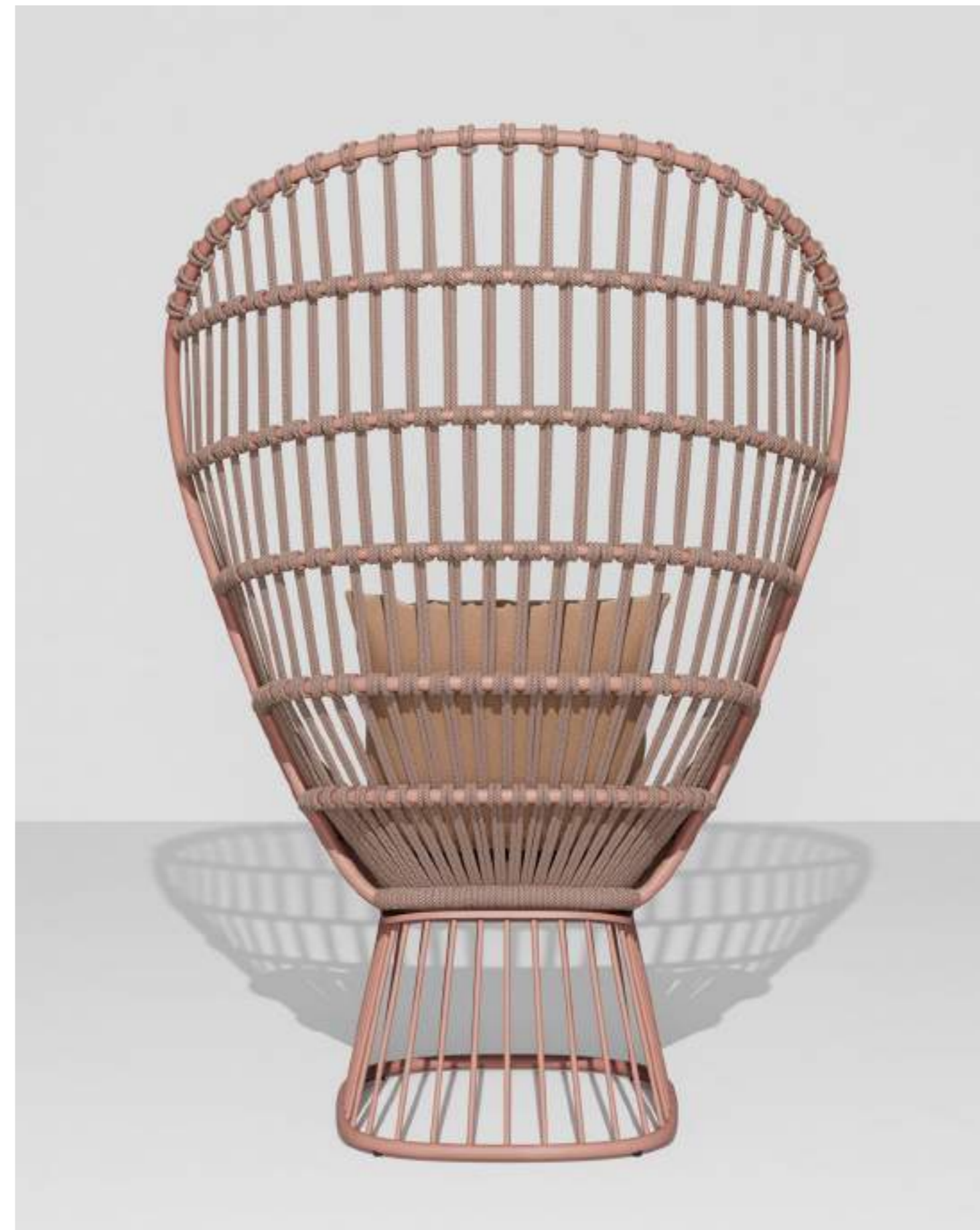
KS6800600



# Cala, by Doshi Levien

Cala is a high-backed armchair inspired by the iconic Emanuelle. The chair has a majestic spatial presence with transparent and light surfaces. The open weave of the rope provides a latticed window for visual privacy while maintaining a connection to the natural elements.

Cala may be used for outdoor dining as well as a chair to lounge in. The wide selection of metal coatings, rope colours and cushion fabrics offer many possibilities to tailor the identity of the chair to suit different projects.





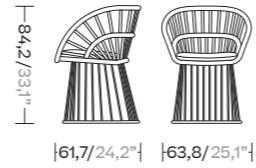




Dining Armchair

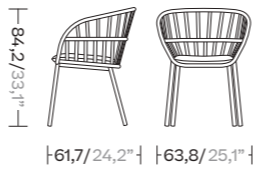
Wood legs  
KS2700200

Aluminum legs  
KS2700100



Stackable Dining Armchair

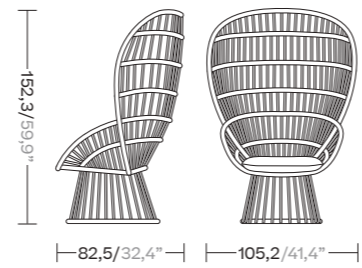
KS2700400



Club Armchair

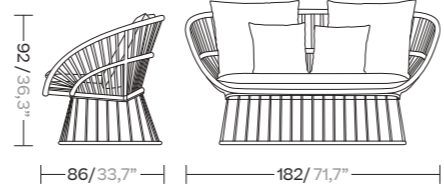
Wood legs  
KS2700600

Aluminum legs  
KS2700500



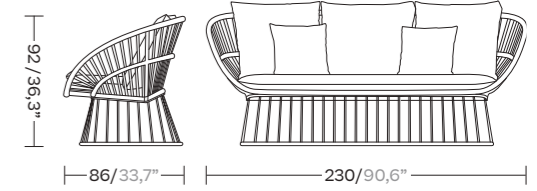
2 Seater Sofa

KS2700700



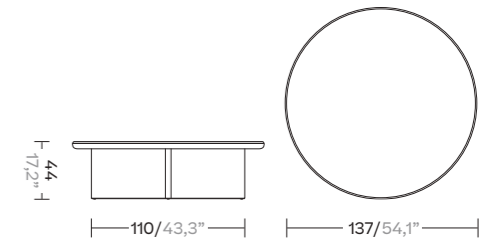
3 Seater Sofa

KS2700800



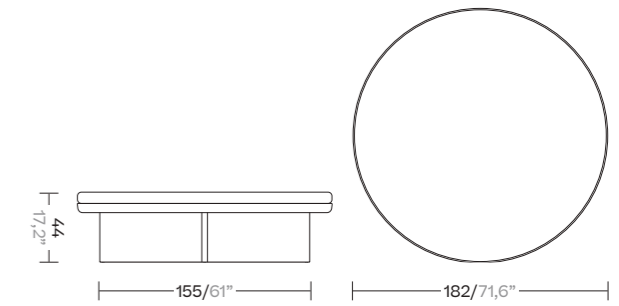
Pouf ø135

KS2700900



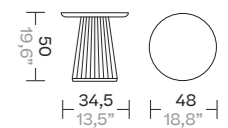
Pouf ø180

KS2701000



Side Table ø48

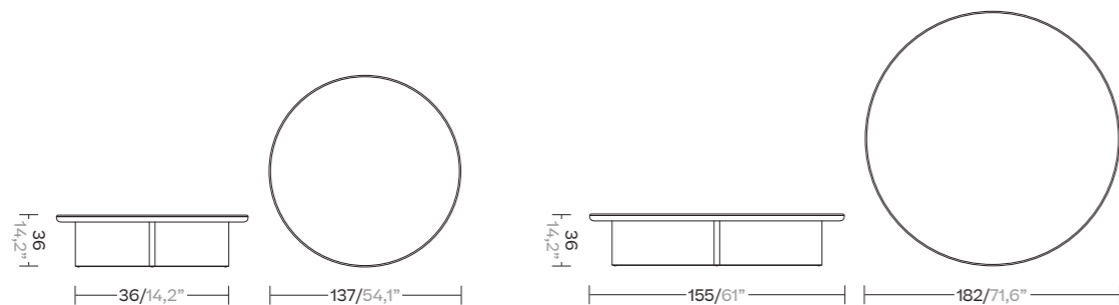
KS2701100



Centre Table ø135 and ø80

ø135  
KS2701200

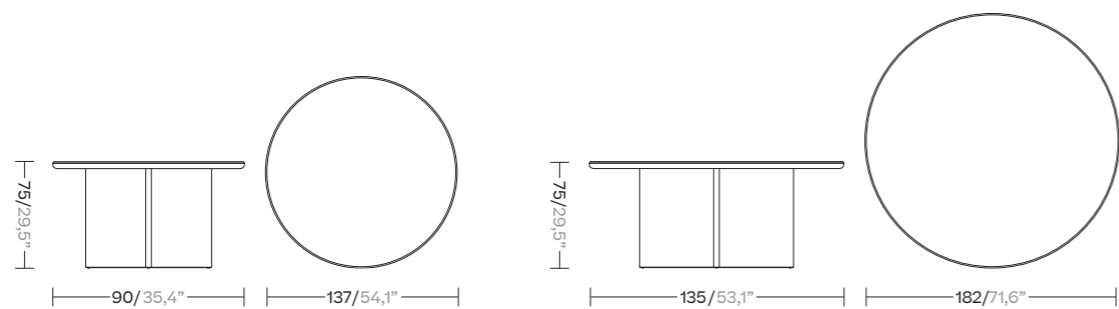
ø180  
KS2701300



Dining Table ø135 and ø180

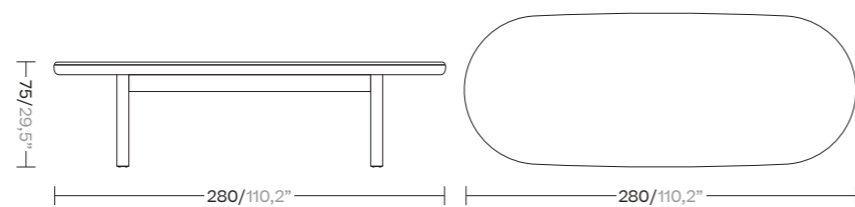
ø135  
KS2701400

ø180  
KS2701500



Oval dining table 280x110

KS2701600\*



# Park Life, by Jasper Morisson

Park Life is a complete family of furniture for outdoors, whose clean cut profile is adaptable to a wide range of situations. Lightweight, yet extremely durable, it is easily stacked for transport or winter storage. With technical sophistication, careful ergonomics and pleasing looks, Park Life offers a long life both structurally and visually.



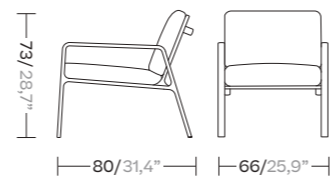






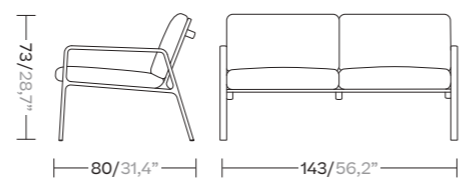
Club Armchair

KS1100600



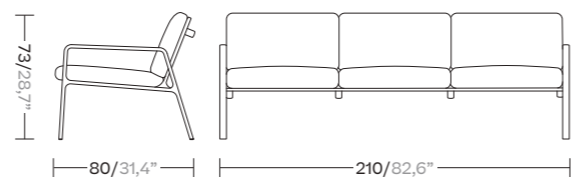
2 Seater Sofa

KS1100700



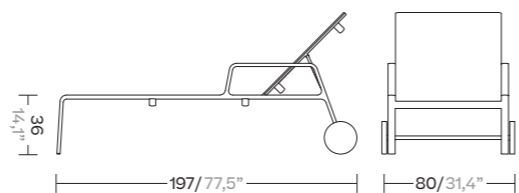
3 Seater Sofa

KS1100800



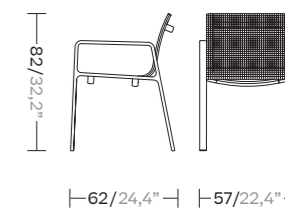
Deckchair

KS1101500



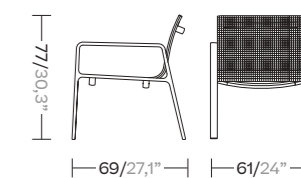
Dining Armchair

KS1100100



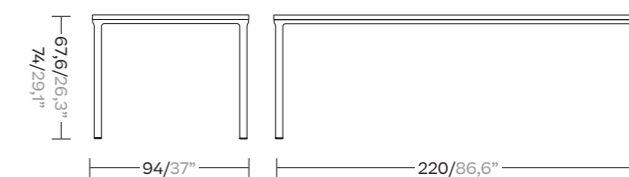
Low Dining Armchair

KS1100500



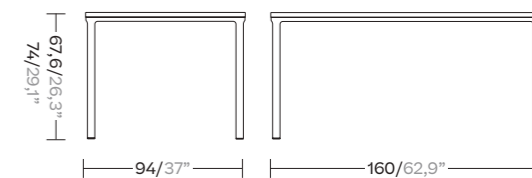
Dining Table 220x94 / 8 guests & low version

KS1100400



Dining Table 160x94 / 6 guests & low version

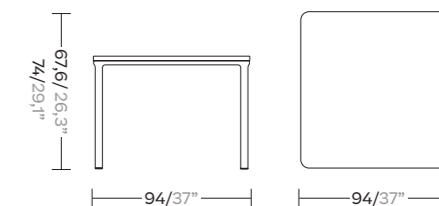
KS1100300





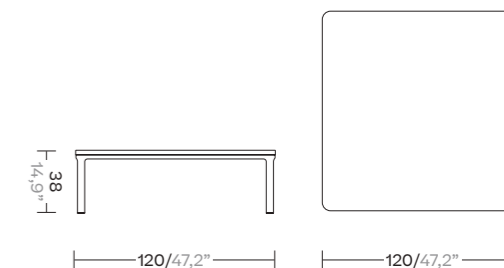
Dining Table 94x94 & low version

KS1100200



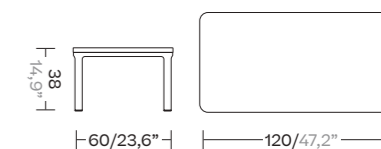
Centre Table 120x120

KS1100900



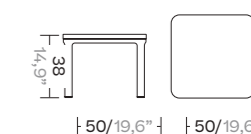
Centre Table 120x60

KS1101000



Side Table 50x50

KS1101100



# Band by Patricia Urquiola

The idea behind the Band collection is the breakdown of structure. It is an object designed using an ensemble of pieces. The chair's design intentionally challenges the classic sophisticated lines of furniture design and becomes something schematic — a conceptual program. It is a structure made up of repetitive angular shapes that give centre stage to its raw materials and it can be formed entirely of aluminum or teak wood, as well as Terrain Fabrics.



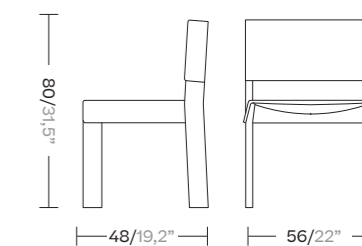




Dining Chair

Aluminium  
KS2800100

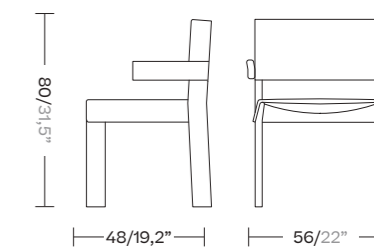
Teak  
KS2800200



Dining armchairs

Aluminium  
KS2800300

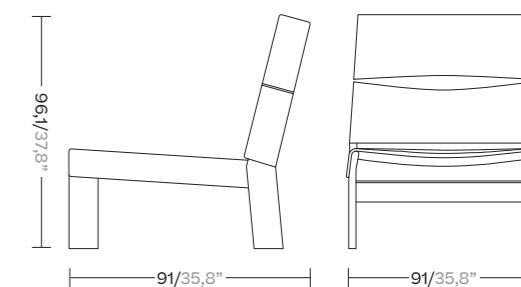
Teak  
KS2800400



Club armchair

Aluminium  
KS2800500

Teak  
KS2800600



# Roll by Patricia Urquiola

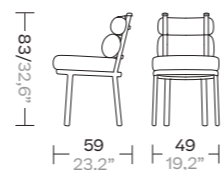
This ironical intervention on the conventional upholstery converts a regular backrest into two independent 'wraps' connected by colorful straps. A graphical aluminum structures frames the protagonist of this chair, the cushions.





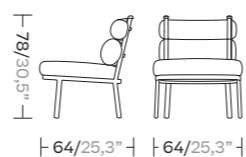
Dining Chair

KS2300100



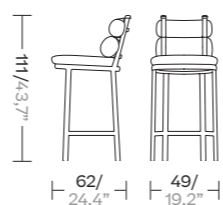
Club Chair

KS2300200



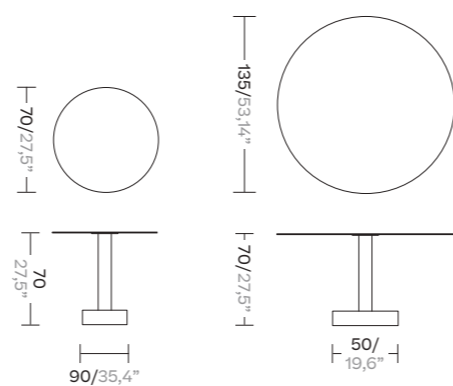
Bar Stool

KS2300300



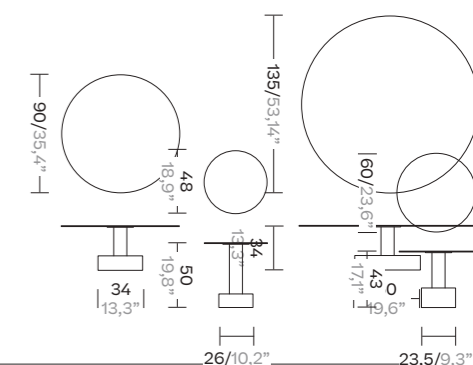
Dining Table ø135  
& Dining Table ø80

ø135  
KS2300500  
ø80  
KS2300400



Centre Table ø135 and ø90  
Side Tables ø48 and ø60

ø135  
KS2300700  
ø48  
KS2300800  
KS2300600  
ø60  
KS2300900



# Basket, by Nanna and Jørgen Ditzel

An edit of the Basket chair, created in the 1950s by the Danish designers Nanna and Jørgen Ditzel. The Basket chair, made from oak, comes in its original version created by the Ditzels — hand-braided in wicker — and in an outdoor version made from artificial fiber and teak.



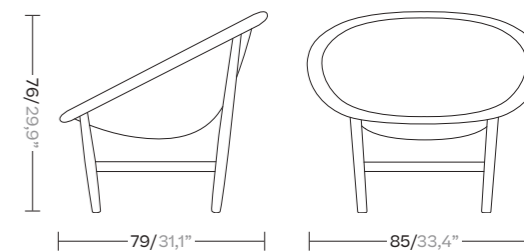


Basket



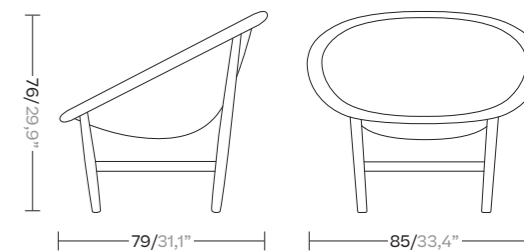
Indoor Club chair

KS1000200



Outdoor Club Chair

KS1000100



# Tou, by Naoto Fukasawa

Tou is our modest tribute to the ancient handicraft of rattan and reed wickerwork, an essential element in the development of both Western and Eastern cultures. Historically, it has been used for all kinds of domestic utensils, furniture and more. The materials are simple and completely natural, but the internal structure of the stem consists of hundreds of cavities, making it both strong and light.

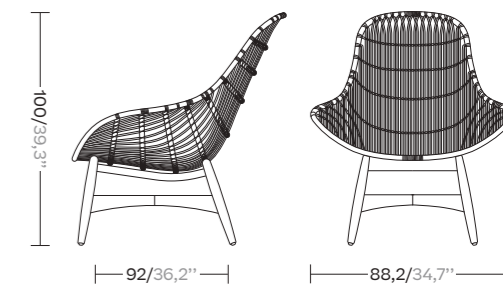
The manufacture combines traditional manual techniques with much more industrial processes. Instead of using the most common form of weaving, we use striped vertical lines, which are lighter and much more expressive than mesh. The outline is smooth and soft, following the natural shapes provided by the material.





Club Armchair

KS6700100 (indoor version)  
KS6700200 (outdoor version)



# Arc, by Kettal studio

The Arc collection features an enveloping backrest based on fundamental geometry: a constant radius arc. It shows restrained, elegant proportions. The light aluminium frame clearly expresses a desire to maintain armchair tradition.

The backrest features simple yet sophisticated braided

strips, while the seat is padded with polyurethane foam covered in matching fabric and the fabric cushion has a removable cover.

The collection is used mostly in hotels, in lobbies and rooms, on cruise ships and also in domestic settings as light furniture in sofa and dining areas.



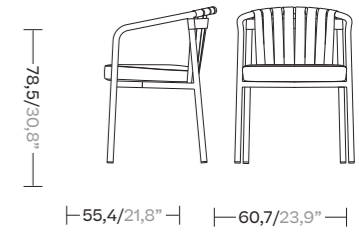


Arc



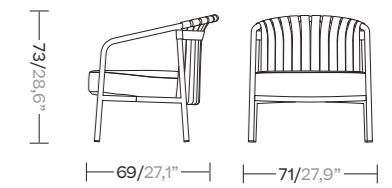
Dining armchair

KSA500100



Club armchair

KSA500200



# Altar, by Miguel Milá

Miguel Milá designed this table in the mid-sixties as an altar for his wedding. It later became a table for everyday use, but was never produced. As if he were a master craftsman, Miguel Milá designed this piece based on the art of simplicity and efficiency. Its shape hides its complexity, but at the same time

reveals the wood's own character, giving it life and prominence. Its constructive logic makes it strong enough in terms of structure, but formally a beautiful piece. The beauty of logic and common sense understands neither time nor trend.

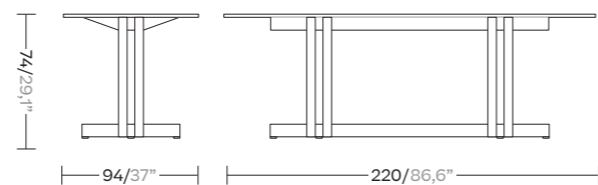






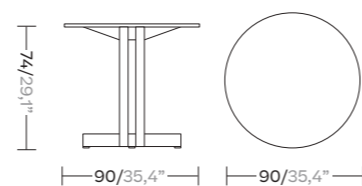
Dining table

KSA400200



Dining table

KSA400100



# Pad, by Kettal studio

Kettal has made deck chairs for decades, and always of the same excellent quality. This enables us to offer a product that garners all that experience: comfort, durability, stackability and so on. Pad is a sturdy, long-lasting deck chair system designed for relaxing in comfort. It is built to withstand continued

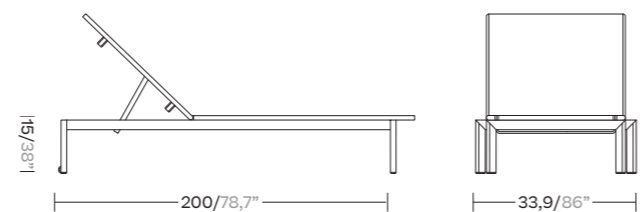
use. The sturdy seat guys and backrest can be easily changed. The ample seat surface and sandwich-style structure make it exceptionally comfortable. With a stretch guy attached to the aluminium frame and optional cushions that add extra comfort.





Deckchair

KSA700100



Living

# Ringer, by Michael Anastassiades

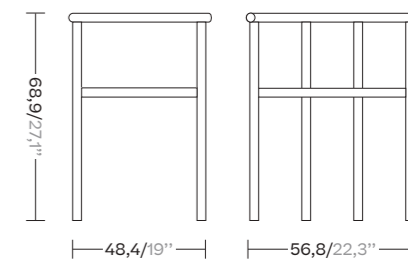
The Ringer Collection is the first collaboration between Kettal and Michael Anastassiades, and it was conceived as a minimalist approach to cafe dining furniture. The title references the traditional Game of Horseshoes, and links to the gesture of the armrest sitting on top of the legs.





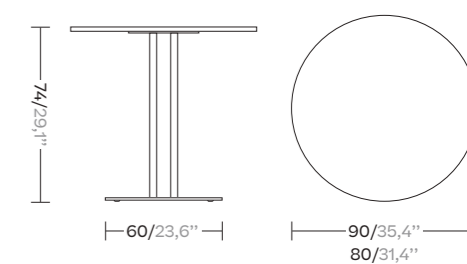
Dining Armchair

KS7700100



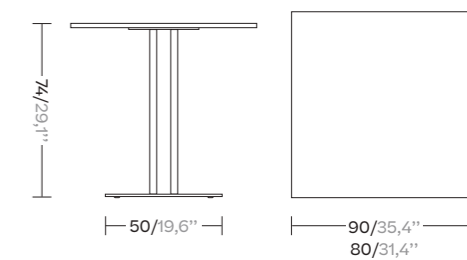
Dining Table Round Base

KS7700200



Dining Table Square Base

KS7700300



# Vimini, by Patricia Urquiola

Vimini means wicker in Italian and it also sounds like Bimini, the name of an island the designer likes. It uses just the right amount of outdoor wicker with a rougher wooden frame. It does not have the same modernist spirit as the Basket (which the original inspiration came from) but it is familiar enough that, when you get close, it stirs a memory and makes one feel at home. That is what it is, more or less — an object of memory.

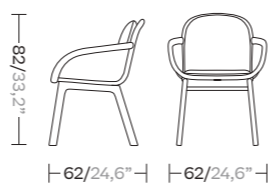






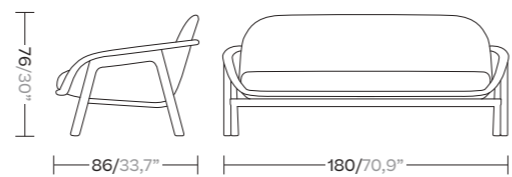
Dining Armchair

KS1500100



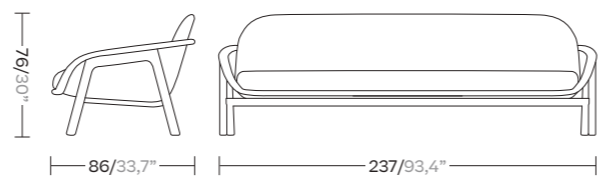
2 Seater Sofa

KS1500200



3 Seater Sofa

KS1500300



# Maia, by Patricia Urquiola

Like an architecture that is in keeping with its surroundings, the Mala collection designed has a natural lightness and elegance.

The design of the artisan braiding, the sturdiness of the aluminum frame and the new, Porotex and chenille fabric collection create a combination that oozes energy.



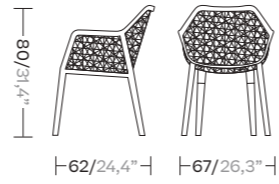




Dining Armchair

Aluminum legs  
KS6500100

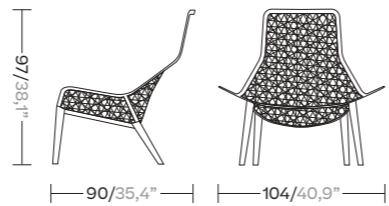
Teak legs  
KS6500200



Club Chair

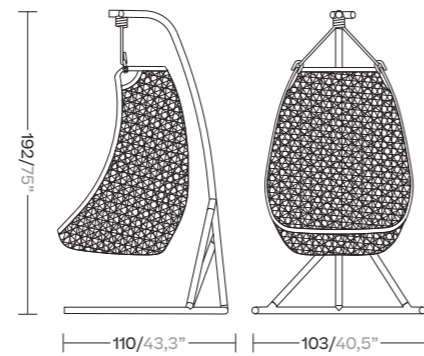
Aluminum legs  
KS6500300

Teak legs  
KS650400



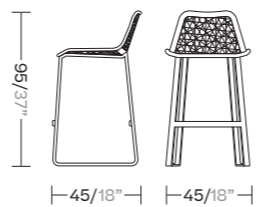
Egg Swing

KS6500900



Barstool

KS6500800

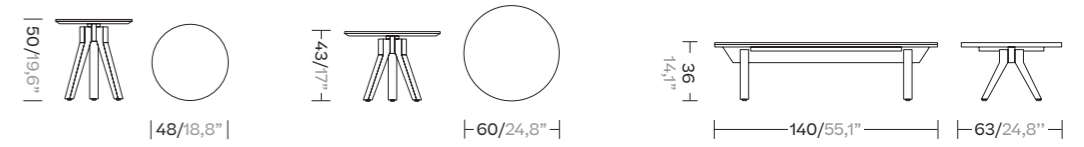


Side Table

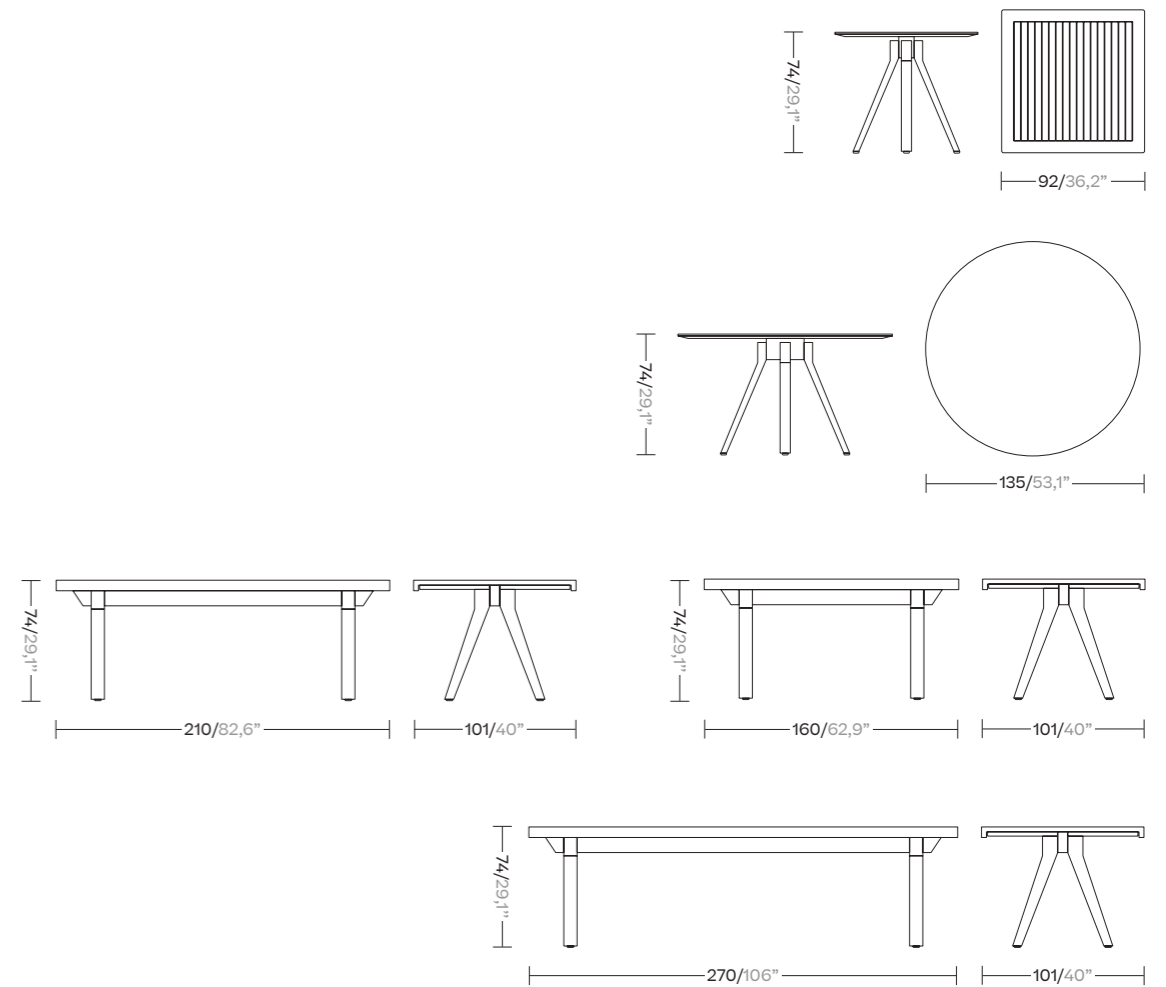
Ø48  
KS4101800/ KS4101900

Ø60  
KS4101600/ KS4101700

Centre table  
KS4101400/ KS4101500



Dining Table



Ø135  
KS4102100/ KS4102200

4 guests  
KS4102000

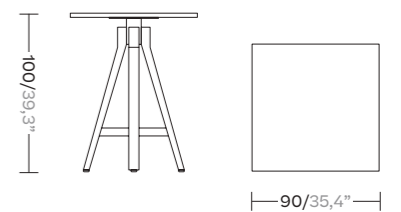
6 guests  
KS4102300/ KS4102400

8 guests  
KS4102500/ KS4102600

10 guests  
KS4102700/ KS4102800

Bar Table

KS4101300



# Landscape, by Kettal Studio

Landscape aims to be part of a project. It is not understood as an item apart, but instead relates to its environment and melds with it. It is the project that is important, not the product, and this is its essence. Its rationalist construction seeks to bring order, form and structure to the outdoor space. Functionally, it is designed to provide shelter: to shade and cool or protect from the elements.



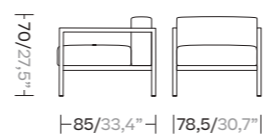






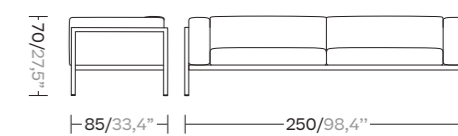
Club Armchair L

KS9400400



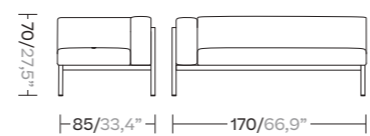
3 Seaters Sofa XL

KS9400900



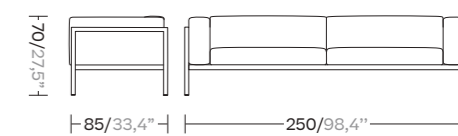
Left & Right Corner Module

Left  
KS9401000  
Right  
KS9401100



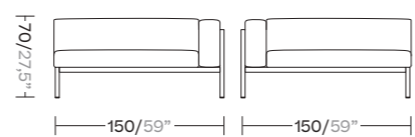
3 Seaters Sofa XL

KS9401200



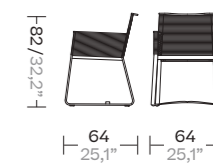
Island

KS9401300



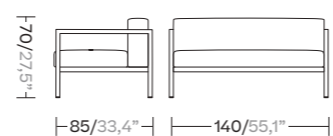
Dining Armchair

KS9400100



2 Seater L

KS9400700



Rocking Chair

KS94003000

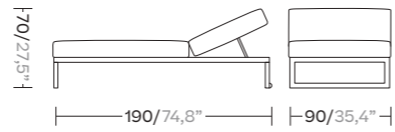




Single & Double Lounger

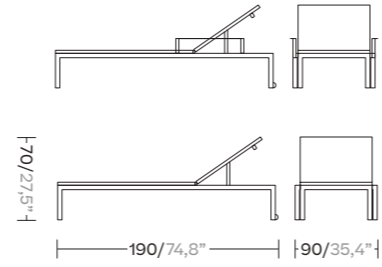
Single lounger  
KS9401500

Double lounger  
KS9401600



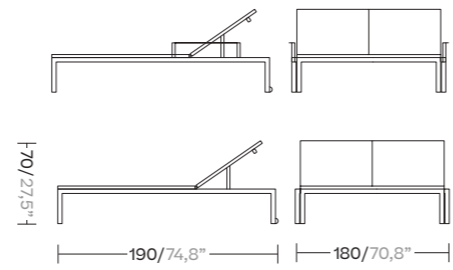
Deckchair

KS9401800



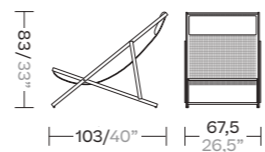
Double Deckchair

KS9402100



Transat

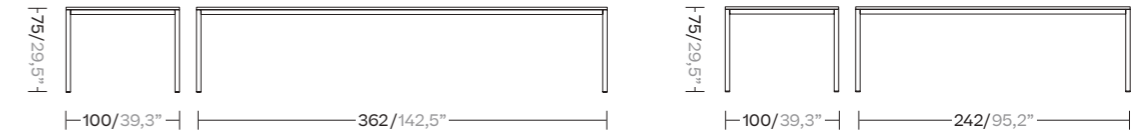
KS9401700



Dining Tables

8 guests  
KS9402500

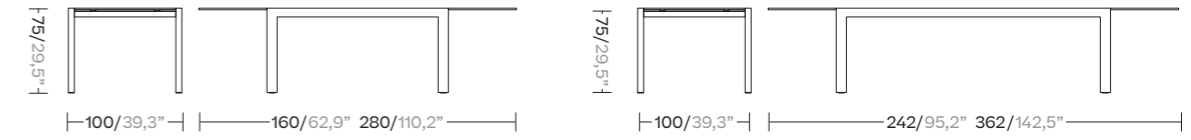
12 guests  
KS9402600



Extendable Tables

6-10 guests  
KS9402700

8-12 guests  
KS9402800

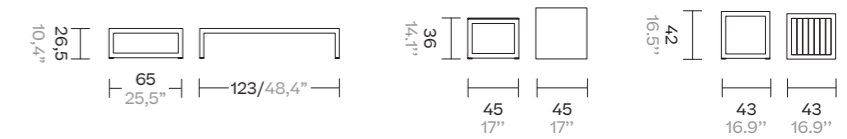


Center Tables

Centre Table  
KS9402900

Aluminium Side Table  
KS9402300

Teak Side Table  
KS9402400



# Stampa, by Ronan & Erwan Bouroullec



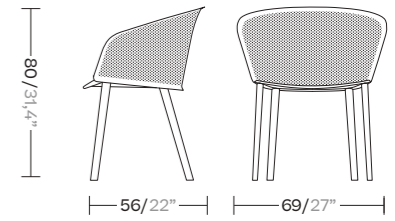
## Stampa

Stampa is an aluminum chair inhabited by carefully organized holes, made through the technique of punching metal sheets. This pattern, resembling textile sensations, offer a robust yet delicate design that can assume the passage of time.



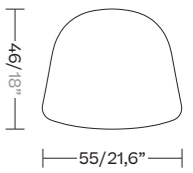
Dining Armchair

KS2200100



Cushion

22105-...



# Village, by Jasper Morrison

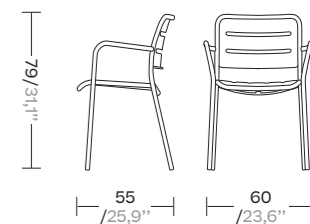


A chair for all outdoor situations, from village house to grand café. The lightweight aluminium structure allows easy handling while the neutral language of its form takes nothing away from the scenery. This chair pays respect to the long standing codes of metal stacking outdoor chairs while gently refreshing the look.

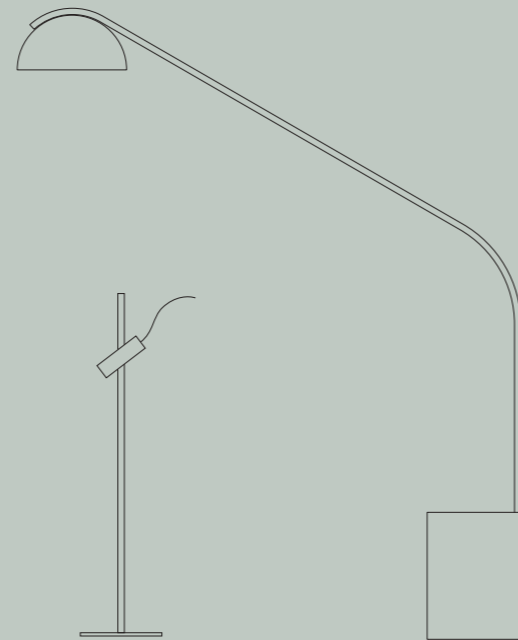
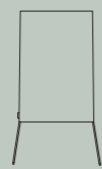
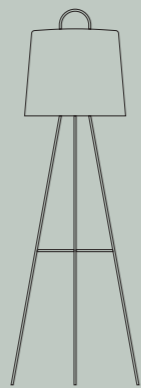
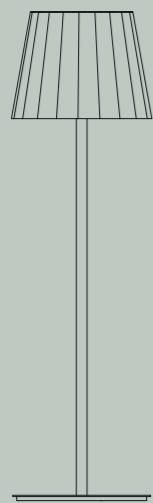


Dining Armchair

KS1300100



# Lighting



Elegance and technology meet to improve the lighting of your spaces.

The different light designs can adapt to all situations: conversation, concentration, relaxation and more. We now know that an adequate amount of light and a clever placement improves mood and energy levels. Form, function and performance is driving the fusion of technology and emotion.

Living

# Half Dome, by Naoto Fukasawa



Half Dome

Never the same Half Dome, never the same light or the same mood. Half Dome is a great mountain with endless variations of lighting and sky situations and seasonal characteristics; the many images reflect the varied creative responses to this remarkable granite monolith. The dimension of Half Dome light follows our image of the moonlight.



# Bela lamp, by Doshi Levien

Bela is a colorful and versatile lamp with a continuous length of rope in a form referencing the texture and lightness of traditional handwoven lanterns. Every year in India there is a kite festival and the streets are lined with enormous spinning frames wound with colourful kite string. These light wooden structures gave Doshi Levien the idea for the frames or spools onto which the Bela ropes are clipped. It can be placed directly on the floor, suspended or used as a standing lamp.



Living

# Dots, by Kettal Studio

Dots lamps, manufactured in aluminium with LED lights, are available in two versions: floor lamp with a circular base and planter lamp with a base that can be fastened to the ground. The new Dots lamps have been developed for indoor and outdoor use. The height and direction can be adjusted to focus the light where it is needed. The lamp features a waterproof switch and includes a USA plug.



# Mia, by Michel Charlot

Mia is a family of nomadic lamps built around an acid-treated glass diffuser which is protected by a large polypropylene lampshade. Both are held in place by a clever wire structure. It was important to have the lamps completely waterproof. By achieving this, the Mia allows for a wide range of applications and it is suitable for outdoor use. The Mia series comprises multiple variations, including a small battery powered lamp.

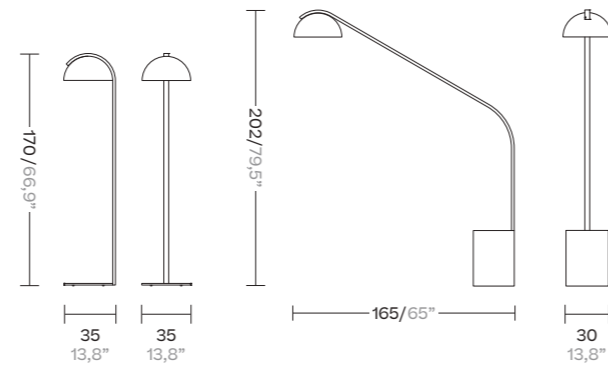




Overhang Lamp

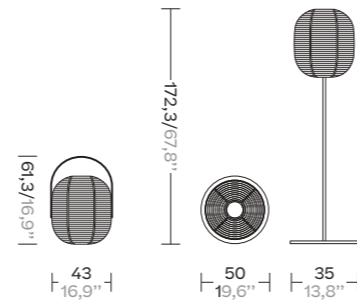
KS5700200  
Overhang lamp

KS5700100  
Floor lamp



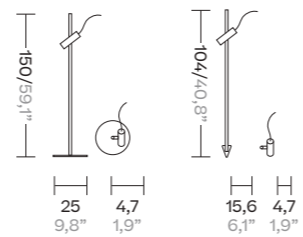
Bela Lamp & Bela Lamp Floor

KS5700400  
KS5700300



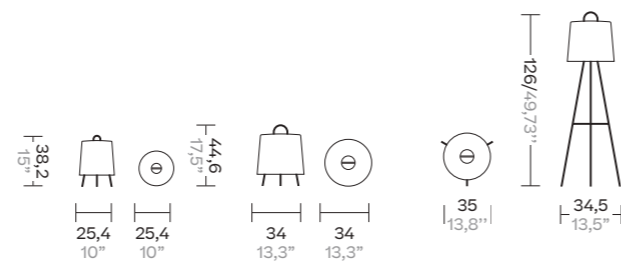
Dots Outdoor Floor Lamp & LED Aluminium Planter light

KS5700600  
KS5700500



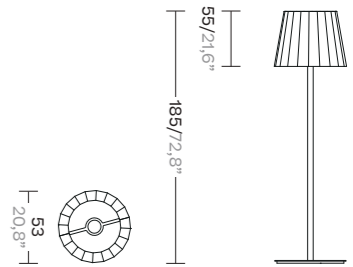
Mia Outdoor Lamps Lamp

KS5700800  
KS5700900



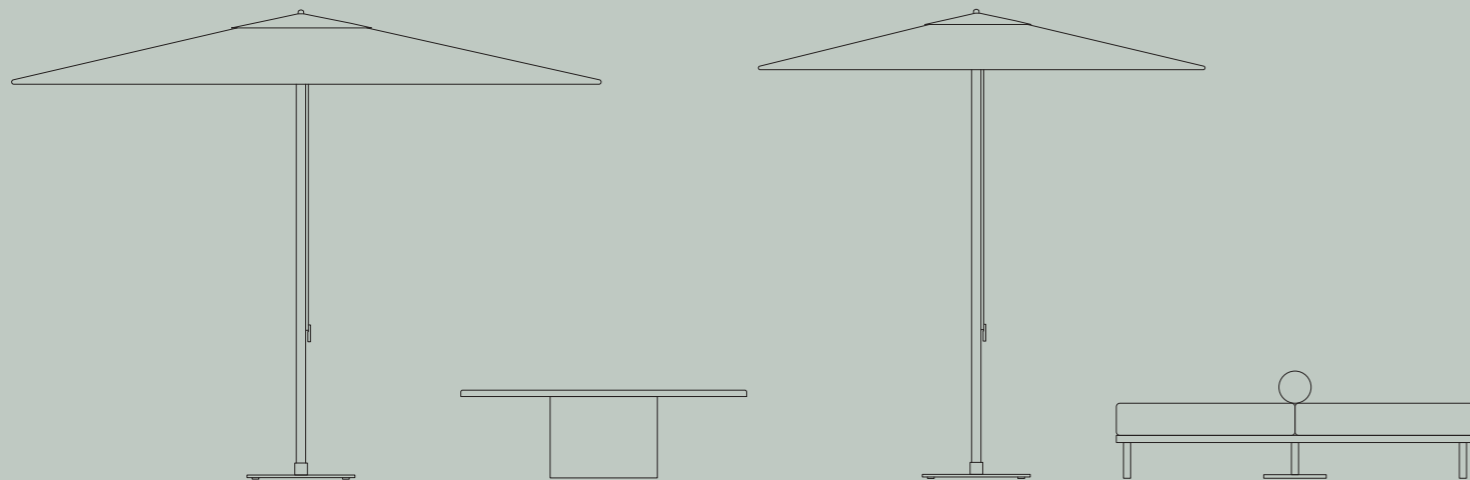
Floor Lamp

KS5700700



# Shadow

Selectively shade your outdoor spaces.



The humble parasol has a vital role to play in maximizing your enjoyment of outdoor spaces. It ushers away the harsh sunlight and it should be an unassuming but elegant presence on the patio.



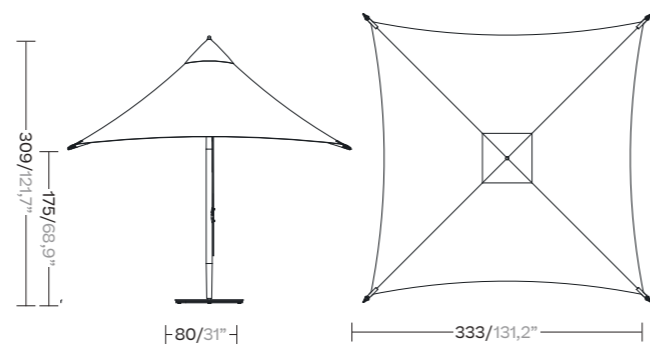
# Paladin, by Konstantin Grcic

Paladin is a wooden parasol for domestic and public use. Its canopy appears to be floating on top of an elegantly shaped mast. The design employs a mechanical principle which incorporates the tension of the canopy into its structural logic. With only the mast and four movable struts, the textile absorbs the tensile forces of the parasol when unfolded. The mast goes right through the center of the canopy,

leaving a central hole that is acting as an indirect skylight and allowing for air circulation. The wooden elements are made in natural teak with a reinforcing core in aluminium. The mechanical joints and fasteners in aluminium and stainless steel are designed to minimize the material input while offering maximum performance.



Paladin



KSB100100



# Meteo S & L by Konstantin Grcic

Meteo aims to explore the largely untapped design potential of modern parasols. Protection from direct sunlight is becoming a quintessential condition for our health and wellbeing. The increasing impact of parasols and other sunshade systems on the planning and furnishing of modern cityscapes, recreational resorts and private dwellings gives rise to the challenge of a renewed approach to this specialized product category.

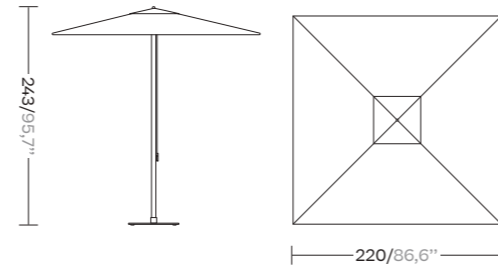






S Parasol

KS5705800



S Meteo Parasol Base

S Meteo Telescopic Steel Flat Base (no wheels)  
KS5706000

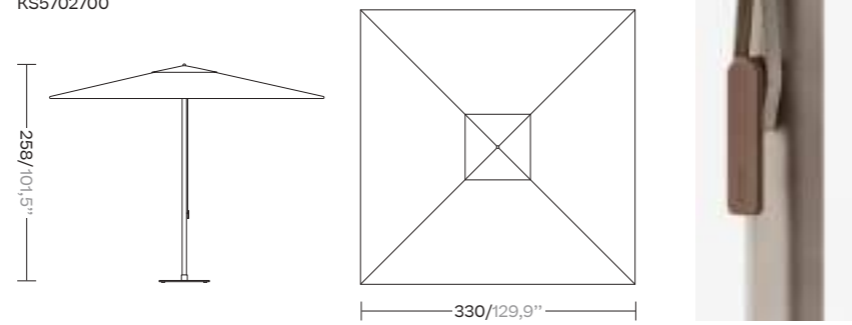
S Meteo Telescopic Steel Flat Base (with wheels)  
KS5706200

S Meteo Telescopic Concrete Base (with wheels)  
KS5706300



L Meteo Parasol

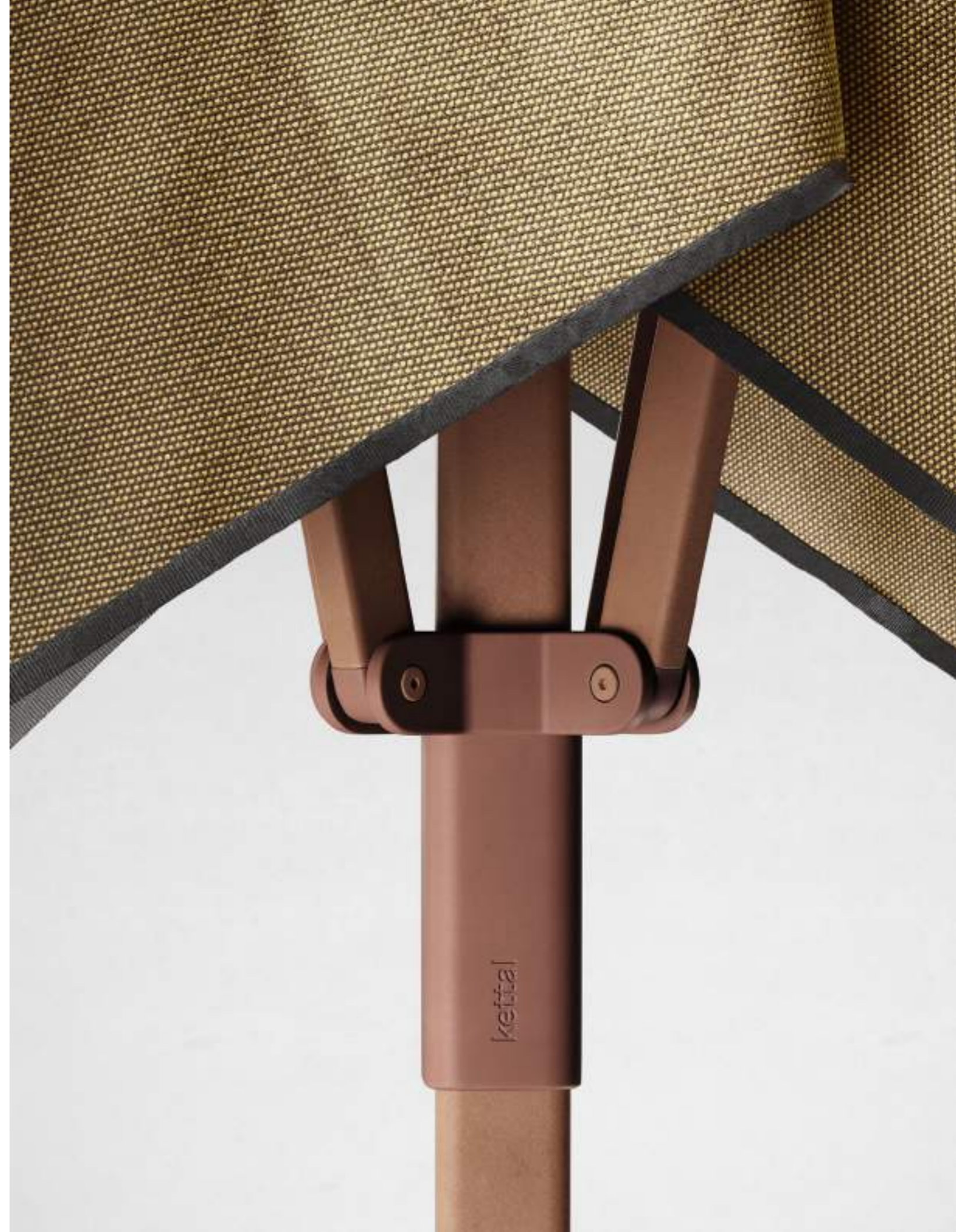
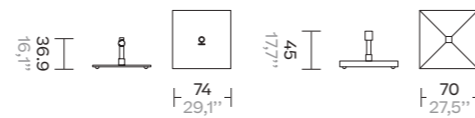
KS5702700



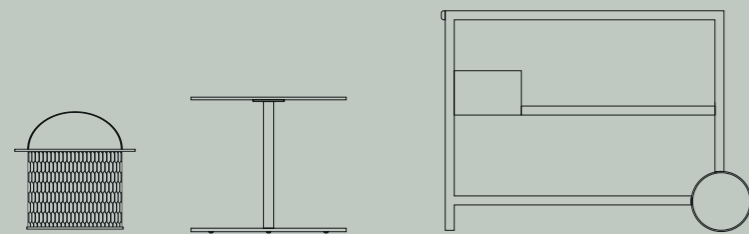
L Meteo Telescopic Steel Flat Base (With wheels)  
L Meteo Telescopic Concrete Base (With wheel)

L Meteo Telescopic Steel Flat Base  
KS5706200

L Meteo Telescopic Concrete Base  
KS5706300



# Objects



Offering additional options while complementing the collections.

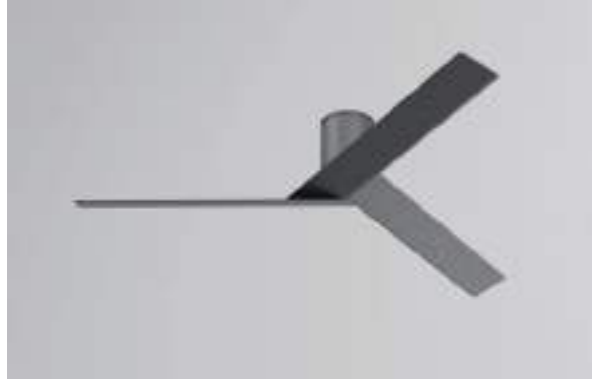
A selection of objects that complement indoor and outdoor spaces. They will dovetail aesthetically and functionally with your overall project.

# Superfan by Michael Anastassiades

Superfan is a tri-blade fan whose geometry is simply defined through three angled blades, meeting at the rotating axis. All design decisions are made to maximise performance and improve efficiency: the angle of the blades, the lightness of the aluminium material and the selection of the motor for accurate speed control and quiet function.

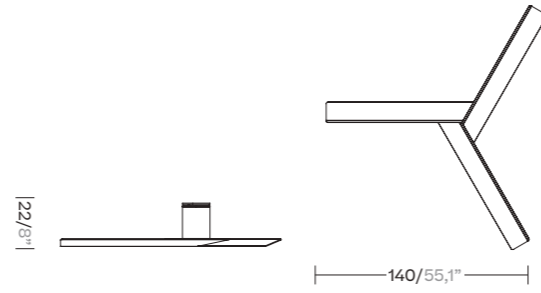
The two fan versions operate with equal efficiency both with and without a pendant, offering flexibility of use for different ceiling heights.





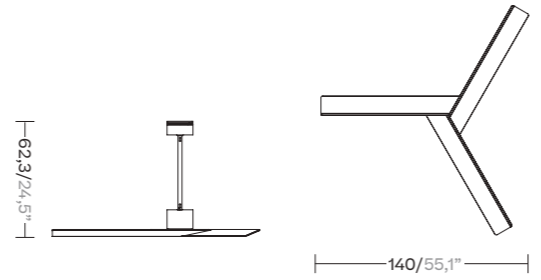
Ceiling fan

KSA900100



Ceiling fan downrod

KSA900200



## App & Voice Control

Kode app allows you to remotely control and configure the Superfan, making it easy to use it from your smartphone anywhere in your home.



# Base Kitchen by Kettal Studio



This modular kitchen structure offers infinite solutions. An aluminium supporting frame can be teamed with a number of stoneware modules in various combinations whilst maintaining its authentic linear design. This design features clean, smooth surfaces, with no corners, for easy cleaning and maintenance.

It is available in two types of stoneware and two Iroko wood finishes for the doors. The modular aluminium structure comes in black only. Along with basic kitchen functions, it has a gas barbecue and can include several burners with a support for a wok. It can also include a bar.



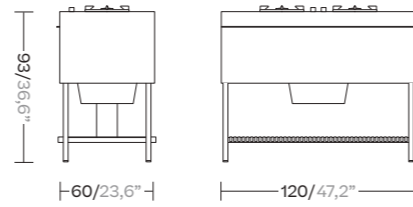




Cook module



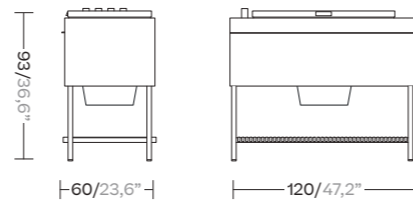
A6800GAS2Q 2 gas cooker



Barbaque module



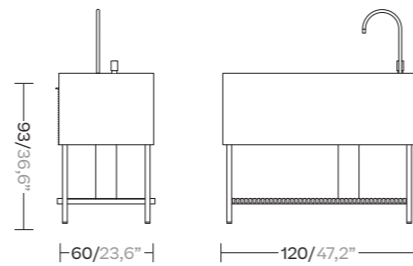
A6800BBQHL Barbaque



Sink module

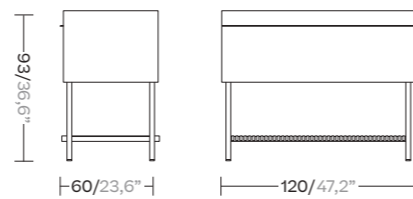


A6800AGU0D



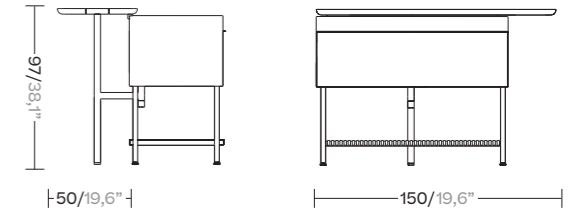
Work top module

A6800ENC00



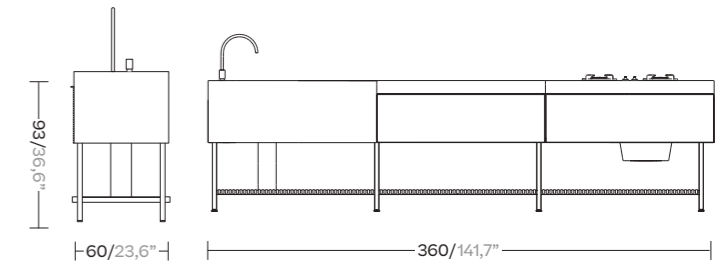
Work top + kitchen bar

A6800ENCKB



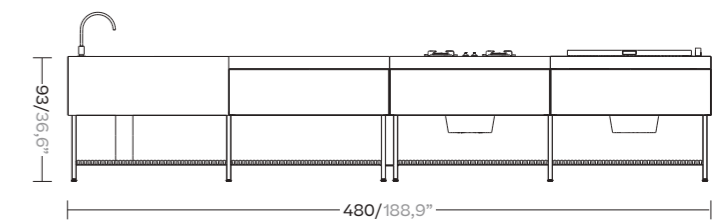
Sink top + Work top +  
Cook top 2 configuration

KSA604800



Sink top + Work top + Cook top +  
Barbaque configuration

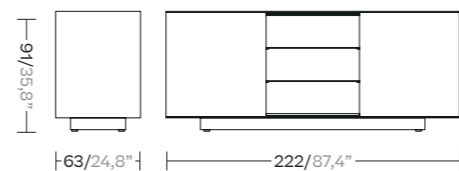
KSA605400





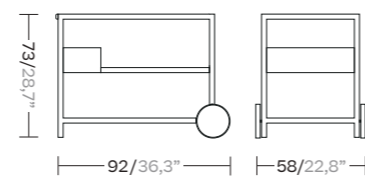
Outdoor Kitchen

KS5702100



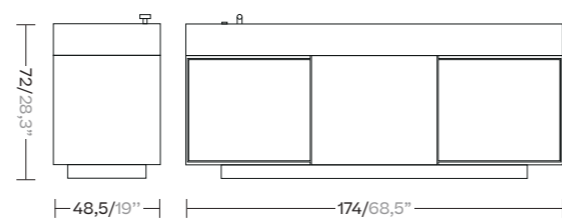
Trolley

KS5702200



Sideboard

KS5702000





White Saltflats



Volcano Dust



Slot canyon



Atacama Desert



Highlands Valley

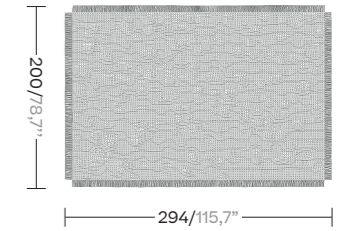


Northern Lights



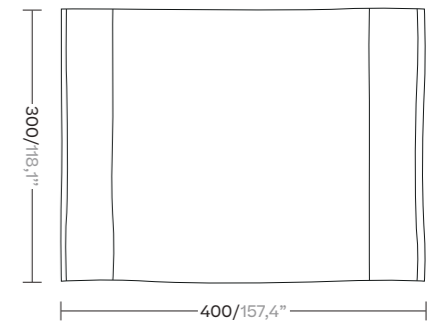
Rug

KS5702300



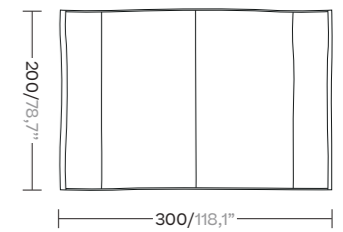
Block Fabrics Rugs

KS5702400



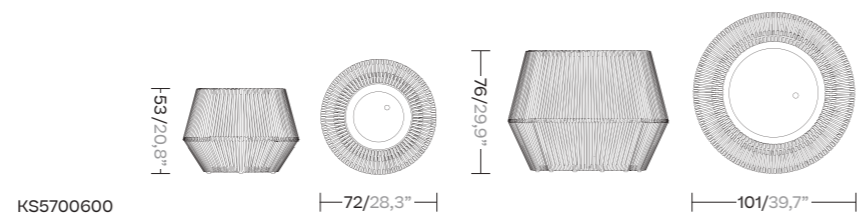
Line Fabrics Rugs

KS5702500





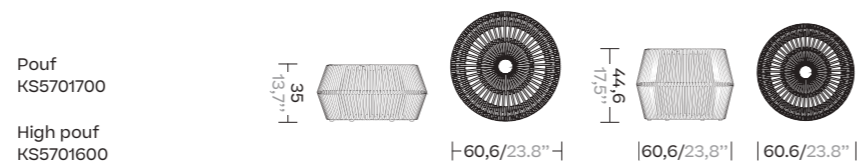
ZigZag Large & Medium Planter



KS5700600



ZigZag Pouf & High Pouf

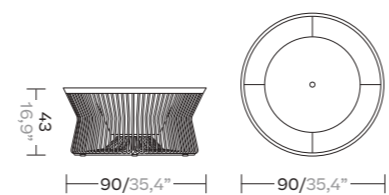


Pouf  
KS5701700

High pouf  
KS5701600



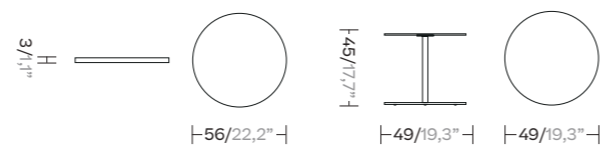
Fire Pit



KS5701700



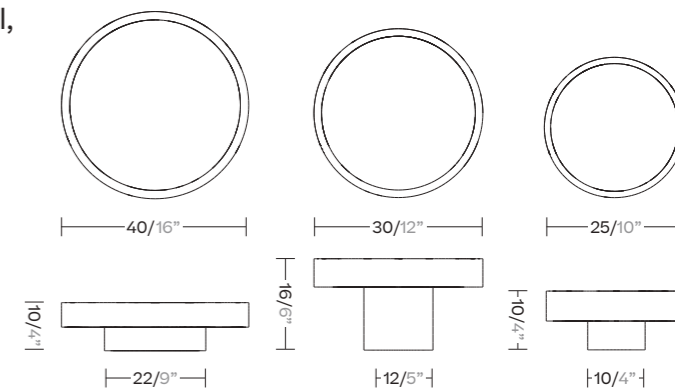
Side Table + Tray



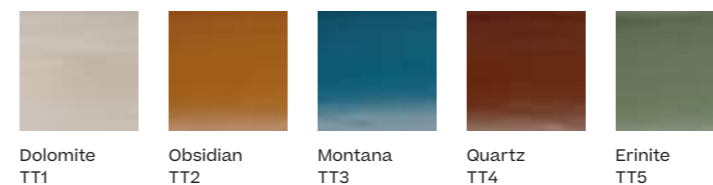
KS5707000



Totto Small, Medium, Large



57ATR-952-41-...  
57ATR-952-42-...  
57ATR-952-43-...



# Finishes

Contemporary & elegant finishes  
for endless combinations.

The wide selections of materials include fabrics, metals, woods, stones and ceramics. All of these worlds form the basis of the library. We invite the professional to explore and combine colors, textures and materials to create exclusive codes for each project.

Terrain Elements

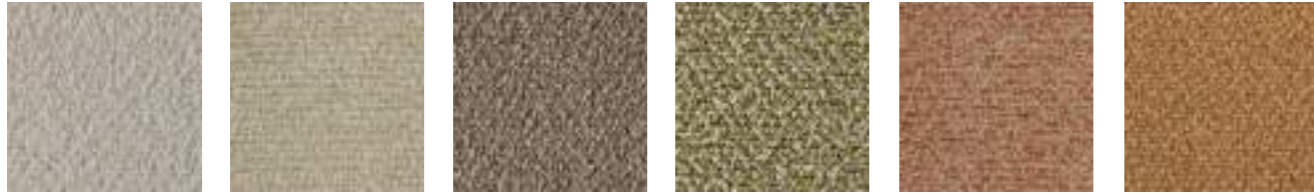


L: Laminate  
T: No laminate (only for umbrellas)

Technical information and  
High res images



Tonale Boucle Laminate



White Poppy  
81L

Sesame  
82L

Anise  
83L

Dill  
84L

Allspice Jamaica  
85L

Bird's foot  
86L

Tonale Lino Laminate



White Chia  
61L

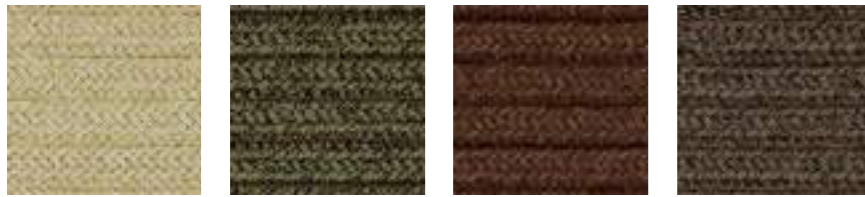
Fennel  
62L

Brown Mustard  
64L

Kampot  
65L

Fenugreek  
66L

Soga (Giro Collection)



New Dawn  
455

Ivy  
465

Chesnut  
475

Woodland  
485

Maya curtains (outdoor)



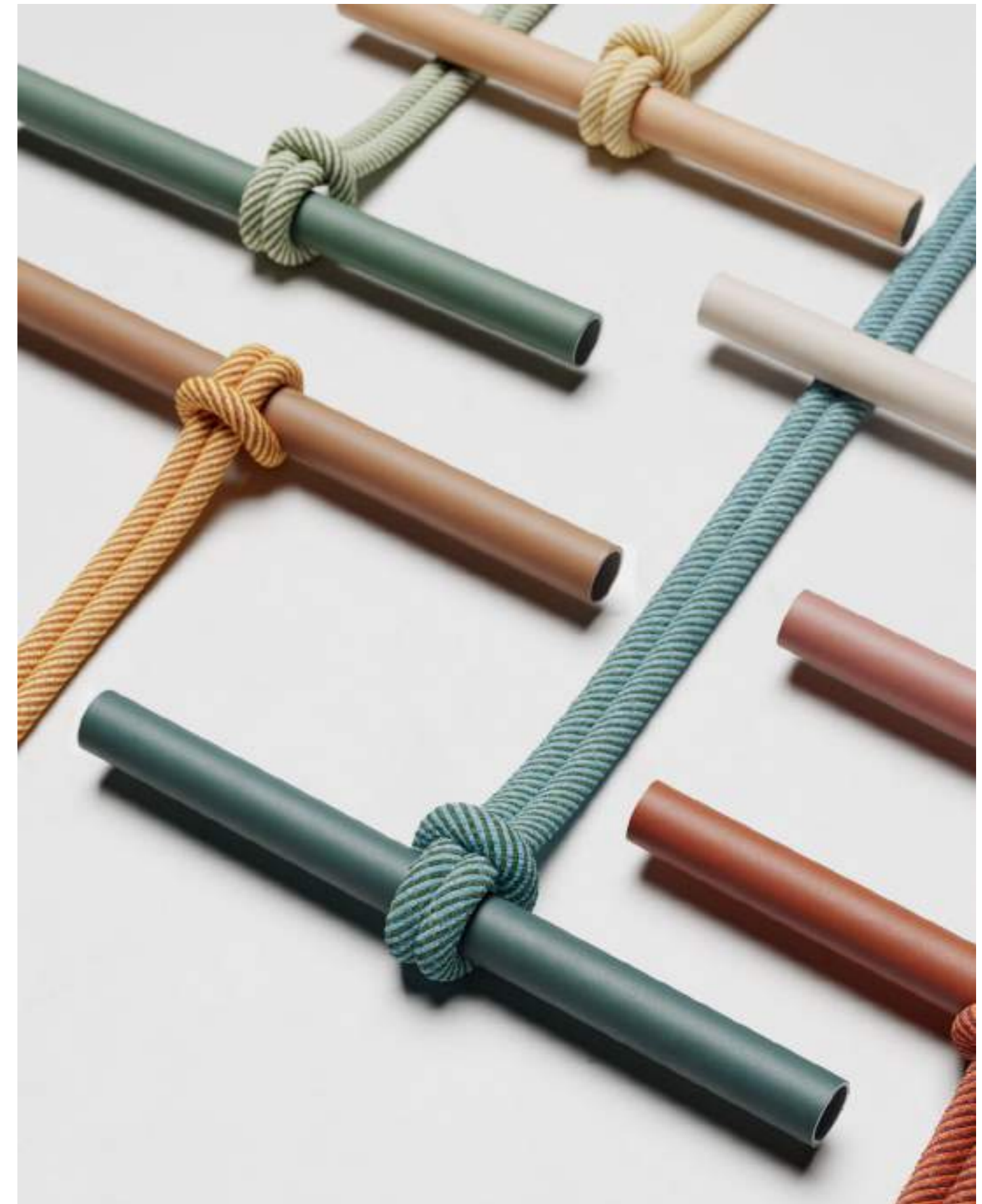
Bonneville  
J06

Nevada  
J03

Colorado  
J08



Terrain Paint



Plain Bela rope



Basalt Z01    Shore Line Z02    Nimbus Z03    Polar White Z04    Dry Vine Z05    Reed Z06    Dusk Z07    Riverbed Z08    Terra Firma Z09



Chestnut Z10    Black Cacao Z14    Gypsum Z11    Dragon Tree Z12    Sumac Z13    Mader Root Z15    Red Mud Z16    Tumeric Z19    Champa Z20



Charoli Z18    Tamarind Z17    Bitter Goud Z21    Foilar Z22    Evergreen Z23    Sea Grass Z25    Teal Z24    Azur Z28    Blue Slate Z29



Midnight Z30    Lavandin Z27    Treetop Z26



Parallels



Lace Coral  
528



Padina  
564



Saline  
571



Urchin  
547



Turtle Grass  
553



Winter Sea  
569

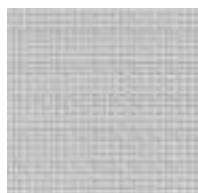


Xenia  
568



Plumaria  
567

Parallels (Porotex)



White Salt  
989



Silver Moon  
990



Sea Shell  
991



Beach Sand  
992



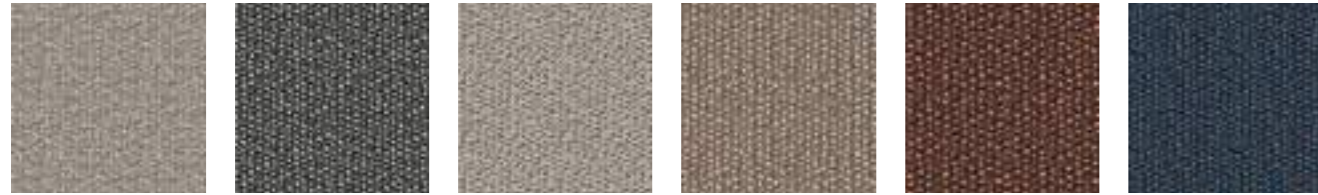
River Sand  
988



Black Urchin  
993



Rockress (Insula Collection)



Silver Falls  
D1L

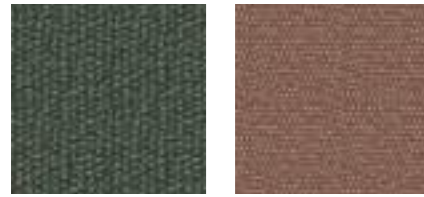
Black Velvet  
D2L

Summer Snow  
D3L

Cherry Caramel  
D4L

Red Robin  
D5L

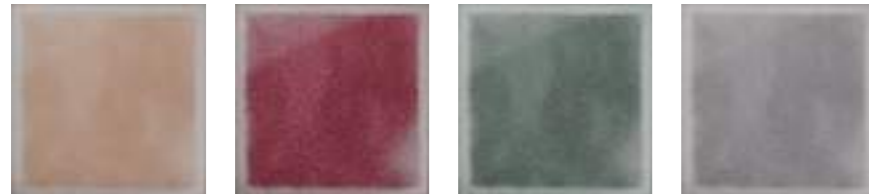
Blue Thyme  
D6L



Silver Falls  
D7L

Arabis  
D8L

Agate (Only for the table tops of the Insula collection)



Camelian Agate

Indian Agate

Moss Agate

Botswana Agate



## Living

### Ceramics



Ceppo di gre  
(Pavilions)



Du Gent Grey  
(Giro/Base Kitchen)



Neutral Caliza  
(Giro/Base Kitchen)



Royal Black  
(Giro)

### Glaze paints



Erinite  
376



Montana  
377



Indian Sapphire  
371



Dolomite  
373



Obsidian  
372



Jasper  
375



Black Diamond  
374



Smoky Quartz  
370

### Plumon table Glaze paints



Topaz  
373



Bornite  
374

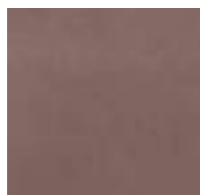


Green Opal  
378

### Minera

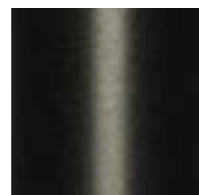


Antique Rose  
MI3



Atlas  
MI4

### Terrain Lustre (Eolias)



Noir d'Ivoire  
CH2

## Finishes

### Shelter fabrics



Cenit Sky  
860



Cloudy  
862



Sun Shine  
865



Desert Storm  
866



Stormy Sky  
863



Mud Storm  
867



Boreal  
864



Sun shade  
861

### Roller blind fabric



Pearl Linen  
795



Ebony Sand  
793



Ebony Bronze  
796

### Wood



Teak

### Aluwood



Atlantic White Cedar  
930



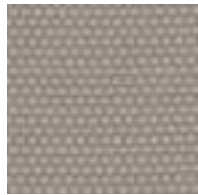
Western Red Cedar  
920



Smoked Wenge  
910

## Living

### Roll Straps



Cotton  
CR1



Calatea  
CR2



Plume Thistle  
CR3



Burnt Wood  
CR4



Sun Flower  
CR5



Sea Holy  
CR6

### Piping



Rosemary  
MR1



Whole Clove  
MR2



Mustard Grain  
MR3



Sea Salt  
MR4



Ground Pepper  
MR5



Black Salt  
MR6

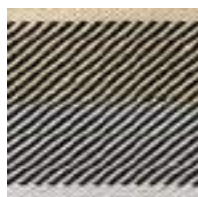


Poppy Seed  
MR7



Rose Harissa  
MR8

### Line Rugs



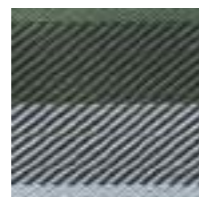
White Saltflats



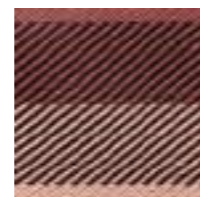
Volcanic Dust



Highlands Valley



Northern Lights

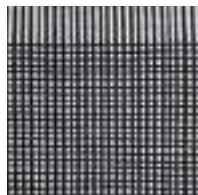


Slot Canyon



Atacama Desert

### Block Rugs



White Saltflats

## Materials

### Waranty terms

For domestic use, all products, except for cushions, covers and fabrics (including textiles), are guaranteed for a period of five years against any manufacturing defect that affects their suitability for use. This guarantee does not apply to normal conditions of use and maintenance. This guarantee does not apply to faults or imperfections resulting from the passage of time or normal wear and tear. Circumstances not covered by this guarantee include, but are not limited to, the fading or change in shade of colours, changes in wood texture, scratches resulting from use, etc. For non-domestic use, by the hotel and catering industry and collectives for example, all products, except cushions, covers and fabrics, are guaranteed for a period of two years. This guarantee is subject to the same conditions as outlined above.

### Technical specifications

Committed to innovation and quality, Kettal's collections are manufactured to the strictest quality standards, from the selection of the materials, to the quality and safety testing of the furniture.

### IMO Certification

Upon request, we can certify our products under the IMO standards.



See all the finishes colors of each image here

### Cala Collection Images

Proyecto: Casa TM  
Arquitectura: Casas de México / @  
cdmcasasdemexico  
Fotografía: Rory Garidner / @  
arorygardiner

### Giro Collection Images copyright. Winery VV

Architect: Vincent Van Duysen  
Giro Collection Images  
copyright. Villa Mandra by K-Studio.  
brechenmacher-baumann.com

### Roll copyright images Project | Dalkeith, Perth, Australia

Architect: Brooking Design  
Builder: Palazzo Homes  
Photography: Gathering Light  
Interior Design & Styling: Jill Owens  
Interiors

# We would love to hear from you.

## Head office

Kettal Barcelona  
Aragón, 316  
08009 Barcelona, Spain  
T. (34) 93 487 90 90  
F. (34) 93 487 90 66



Download our  
Workplace catalogue



Download our  
Contract catalogue

## Showrooms

Miami  
147 Miracle Mile  
Coral Gables,  
Florida 33134, USA  
t. (1) 786 552 90 22  
miami.store@kettal.es

New York  
The D&D Annex:  
222 East 59th Street  
Suite 222-333  
New York, NY 10022, USA  
t. (1) 917-992-9419  
newyork.showroom@kettal.com

London  
15-16 Dufferin St,  
London EC1Y 8UR, Reino Unido  
t. +44 (0) 7498 846 352  
london.showroom@kettal.es

Marbella  
Crtra. de Cádiz, Km.179  
(entre el Marbella Club  
y el Guadalpin)  
29600 Marbella, Spain  
t. (34) 95 277 89 89  
tienda.marbella@kettal.es

Chicago  
The Mart.  
222 Merchandise Mart Plaza,  
Suite 377 (3rd fl.)  
Chicago, IL 60654 USA.  
T. 312.244.0527  
chicago.showroom@kettal.es

Paris  
80, Blvd Malesherbes  
75008 Paris, France  
t. (33) 1 43 59 51 40  
boutique.paris@kettal.es

Barcelona  
Aragón, 316  
08009 Barcelona, Spain  
T. (34) 93 488 10 80  
tienda.bcn@kettal.es

Melbourne  
510 Church Street Melbourne  
Richmond VIC 3121, Australia  
t. (03) 9957 8799

Milan  
Via Broletto 44/46  
Milan  
Coming soon!

Casablanca  
2<sup>ème</sup> étage, 54 Jean Jaurès St,  
Casablanca  
casablanca.showroom@kettal.es