

Indoor

Entertainment

Book 01

Together

This term describes association, involvement, sharing, as well as socializing.

Our dream is to refill houses with people, who share moments, play, laugh and enjoy the present. Going back to living your home in the oldest and truest way, by **spending time together**.

What we do at Vismara is to shape an idea of lightness that stands for fun and sharing. Enjoying our loved ones, returning to experiencing moments far from displays, face to face with people we love.

How do we succeed in making this happen?

We create products that allow you to have fun again. Objects that are not simple furnishings, but real catalysts for aggregation. Turning your home into a space of complete freedom, where magic happens.

Our game tables become the protagonists of unforgettable moments that will enrich unforgettable memories.

With this exact spirit of sharing the items shown here were conceived. Thanks to the collaboration with external designers, who with their vision of fun and their personal stylistic codes have materialized the needs of our time.

Contents

06 **Oskar**
Foosball Table

14 **Mono**
Pool Table

26 **Enigma**
Multigame Table

38 **Egeo**
Table Tennis Table

48 **Eclisse**
Coffee Table



Oskar

Foosball Table

Designer:
Bellavista & Piccini





Structure: glossy Bianco. Trims: glossy Oltremare.
Playing field: Biscotti back lacquered glass.
Team 1: polished Gold. Team 2: glossy Oltremare.

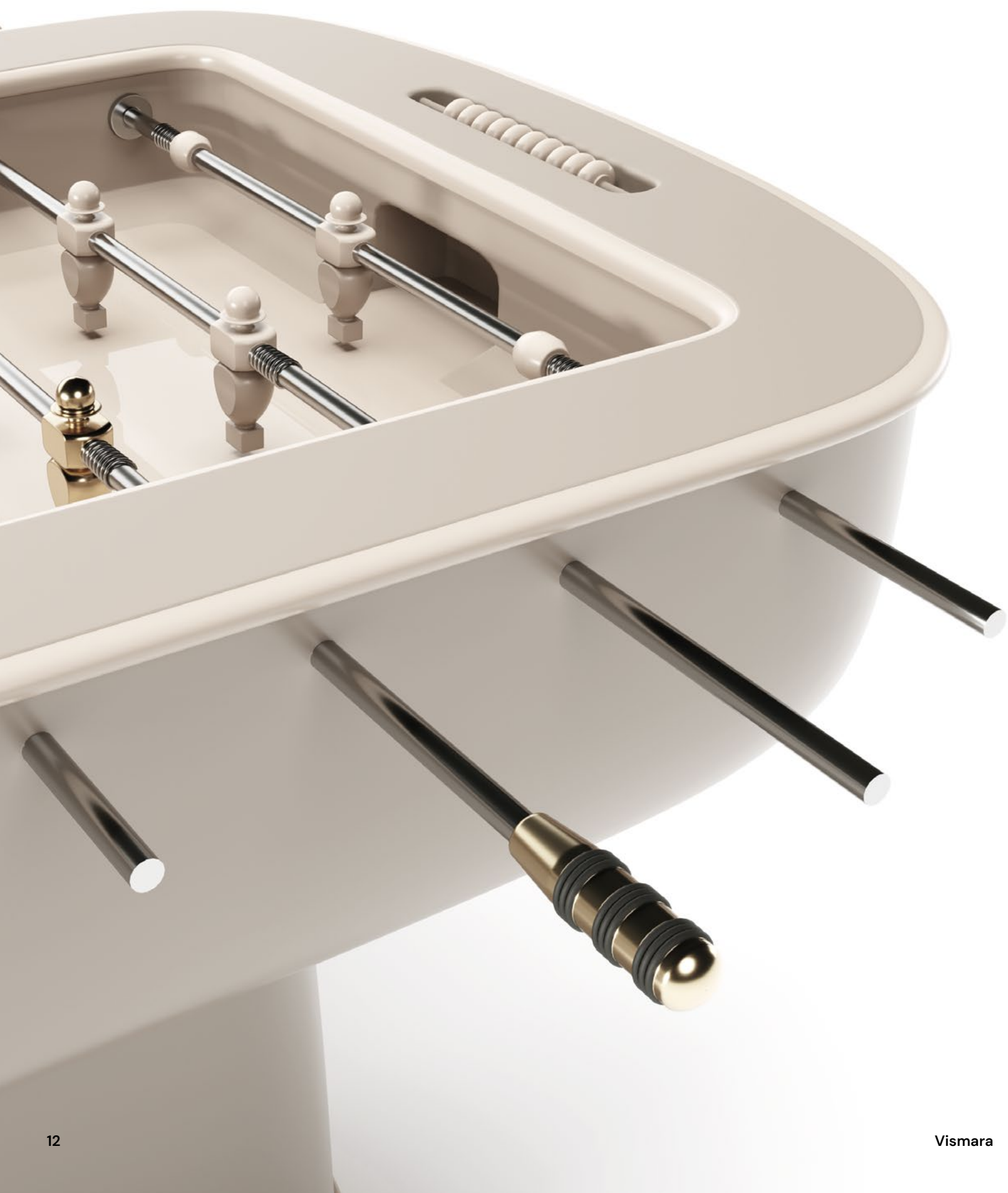
Rounded shapes, sinuous lines and shiny colours.

The playful spirit of this table is in perfect harmony with its design. Each detail of Oskar foosball table is masterfully created to give birth to an iconic design piece.

Oskar, with its exquisite design, reminds us of the importance of past in the creation of timeless pieces. It recalls the sinuosity of 50s design; sharp edges are banned in favor of soft profiles that emphasise the playful spirit of the piece. The sinuosity is highlighted by the use of an extra-glossy finish.

Its soft shape marries perfectly with the little players, inspired by the theatrical figures of the Bauhaus master Oskar Schlemmer.





Structure: matt Biscotti.
Trims: glossy Avorio.
Playing field: Biscotti back lacquered glass.
Team 1: polished Gold.
Team 2: glossy Biscotti.

Mono

Pool Table

Designer:
Bellavista & Piccini





Structure: Biscotti concrete effect.
Top rails: Travertino Beige ceramic.
Cloth: Olive Green.





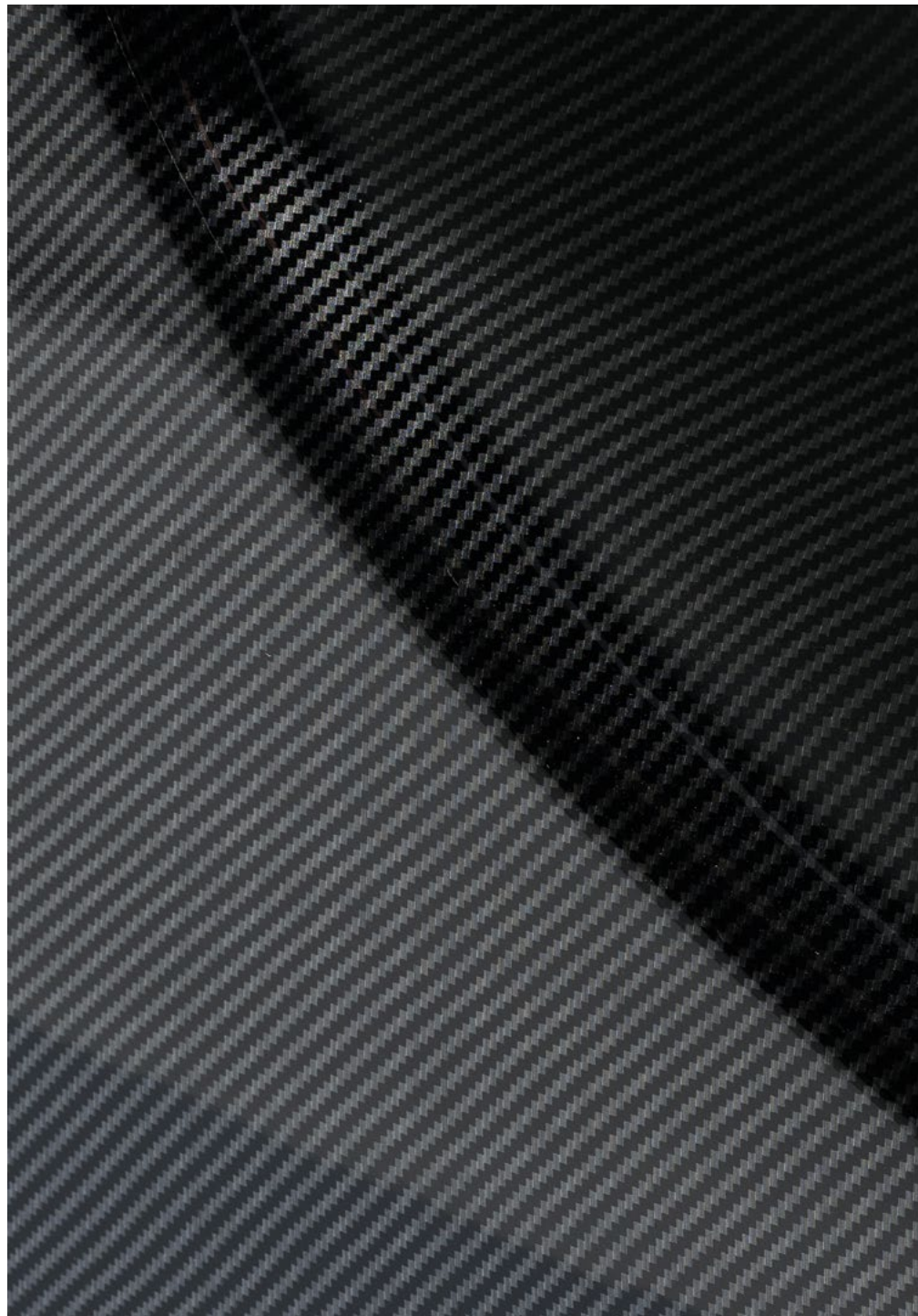
Like a mystical stone,
Mono stands in front of us,
with its massive grace and
its essential design.

Mono is the first Vismara Pool Table with a central base. Mono monumental base maintains an essential but high-impact design. Mono is a professional billiard table made to be enjoyed by both amateurs and professionals. It is equipped with a slate playing top covered with Simonis professional cloth.

Mono can be easily turned into a dining table, thanks to the addition of a removable top.



Structure: glossy Nero.
Top rails: soft touch Nero.
Cloth: Black.



Structure: Carbon Fiber effect.
Top rails: soft touch Nero.
Cloth: Black.



Enigma

Multigame Table

Designer:
Alberto Biagini





Enigma Cards Edition
Structure: soft touch Desert Taupe.
Top: Soft touch Ebony Makassar.
Playing field: Eco Nabuk EN16.
Leather cup holders.



Moscova Game Kit



Beijing Game Kit



Enigma Carrom Edition
Structure: glossy Biscotti.
Top: soft touch Ebony Makassar.
Leather cup holders.

A product that changes, but always stays the same.

An apparently simple table hides secrets ready to be revealed.

Enigma is a multi-game table that, thanks to interchangeable tops, allows you to have your favourite games close at hand, in a single product. Enigma table is available in two editions: Card Table and Carrom Table.

Once the version has been selected, a double-faced covering top can be placed to add new games. These additional tops are available for chess, backgammon or card games.



Enigma Cards Edition
with double face removable top.
One side Chess board,
one side Backgammon board.

Egeo

Multifunctional Table:
Table Tennis Table /
Dining Table

Designer:
Studio Boccaccio432





Playing top: matt lacquered Botanical Green.
Legs: Biscotti concrete effect.
Metal details: polished Gold.



Leather bag for table tennis accessories.

Ancient Greeks' architectural mastery teaches us to prefer simplicity and purity for the creation of works that might be eternal.

Egeo Table draws inspiration from ancient Greek temples, from their majestic grace and essential shapes. Egeo Table Tennis Table, in addition to being a perfectly functional game table, can turn into a large dining table by simply removing its net.



Playing top: matt Canaletto.
Legs: matt Perla.
Metal: polished Black Nickel.



Egeo table tennis table
is available in its outdoor version.

Discover more on
Vismara Outdoor Entertainment Book 02

Eclisse

Coffee Table

Designer:
Studio Boccaccio432





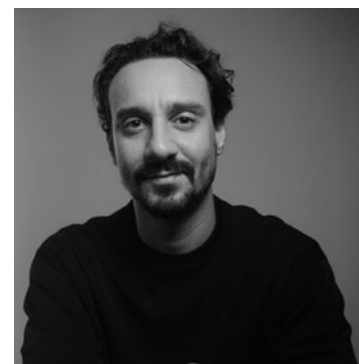
Top: matt Canaletto and Biscotti concrete.
Base: leather GA56.
Metal details: matt Bronze.



Eclisse coffee table
is available in its outdoor version.

Discover more on
Vismara Outdoor Entertainment Book 02

Designers



Alberto Biagini

Enigma Multigame Table



Bellavista
& Piccini

Oskar Foosball Table
Mono Pool Table



Studio
Boccaccio432

Egeo Table Tennis Table
Eclisse Coffee Table

Technical Data

Oskar



Foosball Table
Internal frame: steel
Structure: ABS
Top: MDF
Playing area: MDF and back lacquered tempered glass
Rotating bars: chrome steel
Players: turned aluminium
Handles: turned aluminium
Scores: turned aluminium

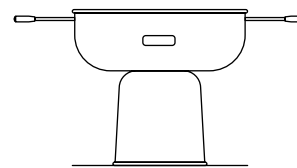
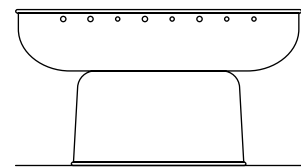
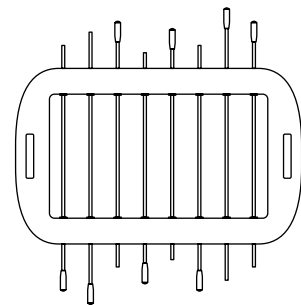
Designer:
Bellavista & Piccini

Prod.
Oskar Foosball Table

Cod.
SG.FB.OSK

Cm (L x W x H)
 159,6 x 97,8 x 87

Inches (L x W x H)
 62³/₄" x 38¹/₂" x 34¹/₄"



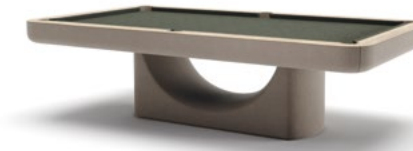
Finishes

Structure
 Lacquered Colors (available in Matt / Soft Touch / Glossy)
 Carbon / Aluminium Fiber Effect
 Concrete Effect

Trims
 Lacquered Colors (available in Matt / Soft Touch / Glossy)

Players
 Lacquered Colors (available in Matt / Soft Touch / Glossy)
 Metals

Mono



Pool Table
Internal frame: steel
Base: synthetic resin
Top: MDF
Playing top: 2,5cm slate
Cushion: vulcanized rubber
Pockets: PVC covered with leather
Cloth: wool and nylon

Designer:
Bellavista & Piccini

Prod.
Mono Pool Table 8ft

Cod.
BL.AP.MON.8

Overall

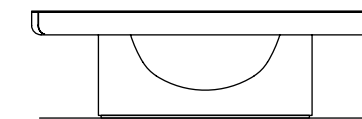
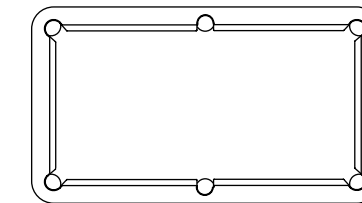
Cm (L x W x H)
 260 x 148 x 81

Inches (L x W x H)
 102¹/₄" x 58¹/₄" x 31³/₄"

Playing area

Cm (L x W x H)
 224 x 112

Inches (L x W x H)
 88¹/₄" x 44"



Finishes

Structure
 Lacquered Colors (available in Matt / Soft Touch / Glossy)
 Carbon / Aluminium Fiber Effect
 Concrete Effect

Playing Field
 Professional Cloth

Top rails
 Lacquered Colors (available in Matt/Soft Touch/Glossy)
 Ceramic Stone Effect

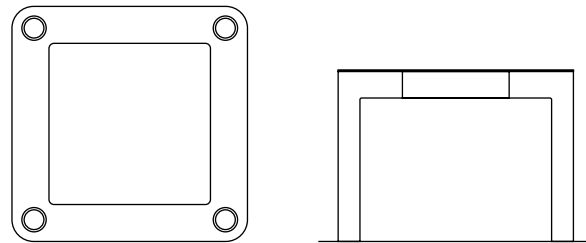
Enigma



Multigame Table
Legs: synthetic resin reinforced with multilayer wood
Internal frame: solid wood
Drawers: MDF
Top: veneered MDF
Playing top (Cards): MDF covered with suede fabric
Playing top (Carrom): printed back lacquered tempered glass

Designer:
Alberto Biagini

Prod.
Enigma Multigame Table

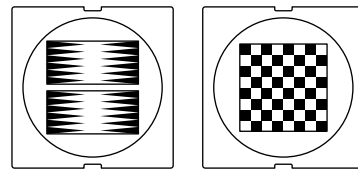


Cod.
GT.ML.EN

Cm (L x W x H)
 108,2 x 108,2 x 79

Inches (L x W x H)
 42 1/2" x 42 1/2" x 31"

Double face top



Finishes

Structure
 Lacquered Colors (available in Matt / Soft Touch / Glossy)

Top
 Veneer Wood (available in Matt / Soft Touch / Glossy)

Cards Cloth
 Suede Fabric Eco Nabuk

Cup Holders
 Leather Cat. Soft

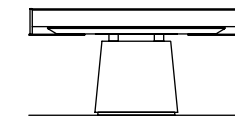
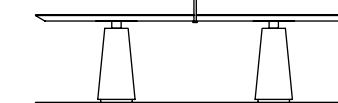
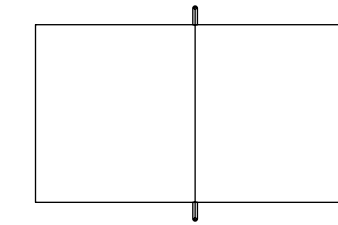
Egeo



Multifunctional Table: Table Tennis Table / Dining Table
Legs: synthetic resin
Top: veneered MDF or lacquered MDF
Supporting frame: steel
Metal details: stainless steel / galvanized aluminium

Designer:
Studio Boccaccio432

Prod.
Egeo Table Tennis Table



Cod.
SG.PP.EGE

Cm (L x W x H)
 274 x 153/185 x 76/92

Inches (L x W x H)
 107 3/4" x 60 1/4" / 72 1/2" x 30" / 36 1/4"

Finishes

Playing Top
 Lacquered Colors (available in Matt)
 Veneer Wood (available in Matt)

Legs
 Lacquered Colors (available in Matt / Soft Touch / Glossy)
 Concrete Effect

Metal details
 4 finishes available

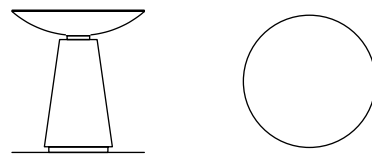
Eclisse



Coffee Table available in 3 sizes
Structure: synthetic resin
Top: veneered MDF or lacquered MDF
Metal details: stainless steel / galvanized aluminium

Designer:
Studio Boccaccio432

Prod.
Eclisse 70 Round coffee table

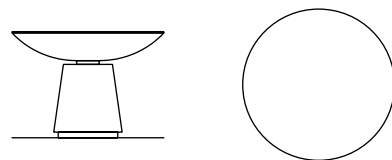


Cod.
T.CT.ECL.70

Cm (L x W x H)
70,4 x 70,4 x 75,6

Inches (L x W x H)
27³/₄" x 27³/₄" x 29³/₄"

Prod.
Eclisse 80 Round coffee table

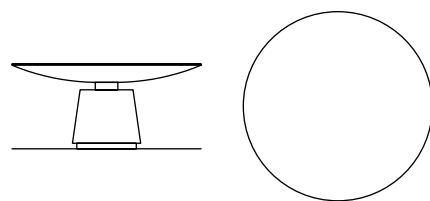


Cod.
T.CT.ECL.80

Cm (L x W x H)
80,4 x 80,4 x 56,6

Inches (L x W x H)
31³/₄" x 31³/₄" x 22¹/₄"

Prod.
Eclisse 100 Round coffee table



Cod.
T.CT.ECL.100

Cm (L x W x H)
100,4 x 100,4 x 45,5

Inches (L x W x H)
39¹/₂" x 39¹/₂" x 18"

Finishes

Base

Lacquered Colors (available in Matt / Soft Touch / Glossy)
Leather Cat. Soft
Concrete Effect

Top

Veneer Wood (available in Matt / Soft Touch / Glossy)
Lacquered Colors (available in Matt / Soft Touch / Glossy)

Metal details

4 finishes available

Finishes

Leather Cat. Soft



Suede Fabric Eco Nabuk



Lacquered Colors

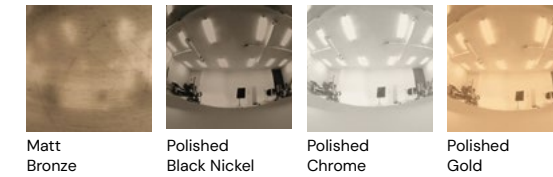
Available in:
Matt
Soft Touch
Glossy



Pool Cloth



Metals



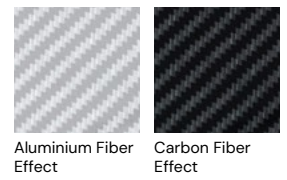
Ceramic



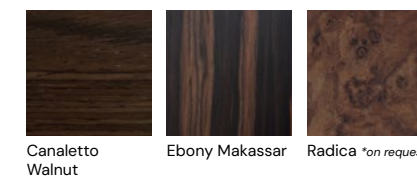
Concrete Effect



Fiber Effect



Veneer Wood



Upholstered Items

Leathers used on our items are all natural leathers. Any imperfection and/or colour change from leather to leather or from batch to batch are not to be considered as a fault since they represent the typical characteristic of the leather itself. The natural variations of colors stimulated by artificial of natural lights, the minimal dimensional variations caused by uncommon levels of humidity or dryness, and in general other natural features of the upholstery coverings, do not have to be considered defects. For leathers, all the natural marks, wrinkles, different levels of gleam and shade, spots and general imperfections, folds due to the natural expansion or movement during use, do not have to be considered defects but elements which featured a natural product and its authenticity. The features of some types of fabrics are related to their composition or way of production and do not have to be considered defects.

In fabrics and leathers, each batch of production can have minimal variations of tones, in comparison both to the samples sets and to items which have been produced in different periods. A proper use of the products and a proper maintenance of upholsteries, allow to preserve their quality in time. The upholstered parts, particularly the ones with covering in feather, are more inclined to folds or crumples, due to common use.

Finishing

Wooden details, available in the following finishes: Canaletto walnut and Ebony makassar. Possible changes in the colour or eventual imperfections are due to the particular natural wood and for this reason have to be considered an additional value and a guarantee of the product.

Wooden structure lacquered with monochromatic finishing. Possible changes in the colour or eventual imperfections are due to the hand decorations and for this reason are to be considered a value and a guarantee of the product.

Remarks

All finishes, woods, fabrics and leathers in the photos of this catalogue are provided just as an indication of the colours. The furniture is hand-decorated and leather and wood are natural materials. For this reason, possible differences in the colours between the photos and the produced furniture must be considered acceptable. VISMARA reserves the right to make all the changes considered necessary to improve the products without any previous notice.



Vismara Design srl

Via Vignazzola, 12
20822 Seveso – MB
Italy

+39 0362 503726
info@vismara.it

www.vismara.it

Instagram
[@vismaradesignitaly](https://www.instagram.com/vismaradesignitaly)

 **VISMARA**



