

Series **Book**



PELLIZZONI

1



Living Seating  
pag.08

3



Office Seating  
pag.202

5



Lighting  
pag.272

2



Living Tables  
pag.128

4



Office Tables  
pag.238

6



Accessories  
pag.294

## Contents

|                            |     |
|----------------------------|-----|
| <b>Company</b>             | 04  |
| <b>Sustainability</b>      | 06  |
| <b>Designers</b>           |     |
| Tom Kelley                 | 30  |
| Stefano Bigi               | 54  |
| Giuliano Cappelletti       | 84  |
| Sergio Bianchi             | 98  |
| Christian Werner           | 126 |
| Franco Bizzozzero          | 162 |
| RedCreative                | 170 |
| Studio Nove.3              | 192 |
| Giulio Manzoni             | 200 |
| Fauciglietti Engineering   | 230 |
| Danilo Bianchi             | 236 |
| Daniele Lo Scalzo Moscheri | 258 |
| Stefano Santilio           | 270 |
| Mia Cullin                 | 292 |
| <b>Living seating</b>      |     |
| Armchairs                  | 10  |
| Chairs                     | 32  |
| Stools                     | 56  |
| Swivel stools              | 76  |
| Sofas                      | 86  |
| Relax armchairs            | 100 |
| <b>Living tables</b>       |     |
| Tables                     | 130 |
| Consoles                   | 154 |
| Writing desks              | 164 |
| Coffee tables              | 172 |
| Bar tables                 | 194 |
| <b>Office seating</b>      |     |
| Swivel chairs              | 204 |
| Waiting area               | 232 |
| <b>Office tables</b>       |     |
| Desks                      | 240 |
| Meeting tables             | 260 |
| <b>Lighting</b>            | 274 |
| <b>Accessories</b>         | 296 |
| <b>Series index</b>        | 328 |
| <b>Materials</b>           | 332 |



## Company

leather design furniture manufacturer

Enrico Pellizzoni brand was created in 1986 from a tradition in leather production that had spanned almost one hundred years. Since the early 1900s, the Pellizzoni family had made of leather their passion, initially entering the footwear sector but immediately repositioning themselves in furnishings. The company is traditionally based in Mariano Comense (Como - Italy) and has been established in its current 4,000 sq. m. complex since 1988, where essential residential and office furnishings are produced: chairs, armchairs, stools, sofas, tables, desks and accessories.

Il marchio Enrico Pellizzoni nasce nel 1986, dopo un'esperienza di lavorazione del cuoio centenaria. Fin dal 1900 infatti la famiglia Pellizzoni ha fatto del cuoio una vera passione; entra inizialmente nel settore calzaturiero orientandosi poi nella produzione di articoli d'arredo. L'azienda storicamente situata in Mariano Comense (Co), dal 1988 si è stabilita nel suo attuale complesso di 4000 mq, dove produce complementi d'arredo per la casa e l'ufficio: sedie, poltrone, sgabelli, divani, tavoli, scrivanie e accessori.



## Sustainability

we work for a clean earth

Full grain leather CPF is a material obtained by first quality bovine hides coming from EU member states. The part of leather used is the shoulder. During the tanning-phase, in which only natural substances are used, the pentachlorophenol is absent according to EU legislation. Tannin extracts are a fundamental ingredient for the slow tanning process and the quality of its result. The finishing of the leather is carried out with pigments and resins made of caseins, having therefore a very low toxic content. During the last phase, in order to prevent the surface from absorbing water, a compound of nitro emulsion is used. Small veins, wrinkles and imperceptible scratches on the surface prove its naturalness rendering each skin one of a kind. Leather is obtained by the butchering for feeding purposes. It's produced in Tuscany, an Italian region well-known for production of some of the finest quality vegetable tanned leathers, and it's protected and promoted by the trademark "Pelle Conciata al Vegetale in Toscana". No bovine has been therefore killed only for furnishings consumerism.

Il Cuoio Pieno Fiore è un materiale ottenuto da pelli di bovino di prima qualità di provenienza da membri dell'UE. La parte di pellame utilizzata è la spalla. Nella fase di concia, durante la quale vengono usate soltanto sostanze vegetali, non è presente il pentaclorofenolo, come richiesto dalle normative UE. La rifinitura del cuoio è effettuata con pigmenti e resine composti principalmente da caseine e, quindi a bassissimo contenuto tossico. In ultima fase, per impedire l'assorbimento dell'acqua dal lato fiore, viene usato un composto di nitro emulsione. Piccole venature, grinze e graffi impercettibili sulla superficie dimostrano la naturalezza della pelle rendendola unica nel suo genere. Il cuoio è ottenuto dalla macellazione avvenuta per scopi alimentari. Nessun bovino è stato dunque abbattuto per il solo consumo di articoli di arredamento. È prodotto in Toscana, una regione italiana famosa per la produzione delle migliori qualità di cuoio conciato al vegetale ed è protetto e promosso dal consorzio "Pelle Conciata al Vegetale in Toscana".



1

# Living Seating



## Armchairs collection

### Frenchkiss Stefano Bigi



HIGH BACK  
code 10.0411 structure NC  
covering PFP31



LOW BACK  
code 10.0410 structure NC  
covering PFP31



LOW BACK  
code 10.0410 structure FR  
covering FEZ1Q



LOW BACK  
code 10.0400 structure BO  
covering PFP01



HIGH BACK  
code 10.0401 structure CR  
covering FEZ14



HIGH BACK  
code 10.0401 structure CR  
covering FEZ35

### Ledermann Tom Kelley



code 10.0601 structure FR  
covering CTT210



LIGHT  
code 10.0605 structure FG  
covering CTT263



## Armchairs collection

### Pasqualina Sergio Bianchi



HIGH BACK  
code 10.0091  
covering CPF81



LONGUE  
code 10.0088  
covering CPF77



code 10.0090  
covering CPF48



RELAX  
code 10.0089  
covering CPF76



POUFF  
code 60.0009  
covering CPF76



Zen chair with arms code 10.0131 structure CR covering CPF25

## Armchairs collection

### Gazzella Tom Kelley



code 10.0301 structure BR  
covering CPF48



code 10.0301 structure NSS  
covering CPF20



CLUB  
code 10.0305 structure BI  
covering CTT226

### Zen Christian Werner



code 10.0131 structure CR  
covering CPF27



code 10.0132 structure CR  
covering CTT203

### Lybra RedCreative



code 10.0172C structure AL  
covering CTT226



# Ledermann

armchair



Ledermann armchair code 10.0601 structure FR covering CTT210  
Indian side table code 40.0900 structure FR covering CTT281  
Indian coffee table code 40.0901 structure FR covering CTT281  
Tulip floor lamp code ACC.500.TUL structure OW covering CTT210





Frenchkiss  
armchair

Frenchkiss armchair code 10.0411 covering PFP42  
Frenchkiss stool code 10.0415 covering PFP42  
Rendez-vous table code 40.0501 structure NO top NM MARBLE  
Indian side table code 40.0900 structure BR covering CTT275 top NC  
Duffy XL lamp code ACC.900.DUF structure OW covering CTT275



# Frenchkiss

armchair



Frenchkiss armchair code 10.0411 covering PFFP42

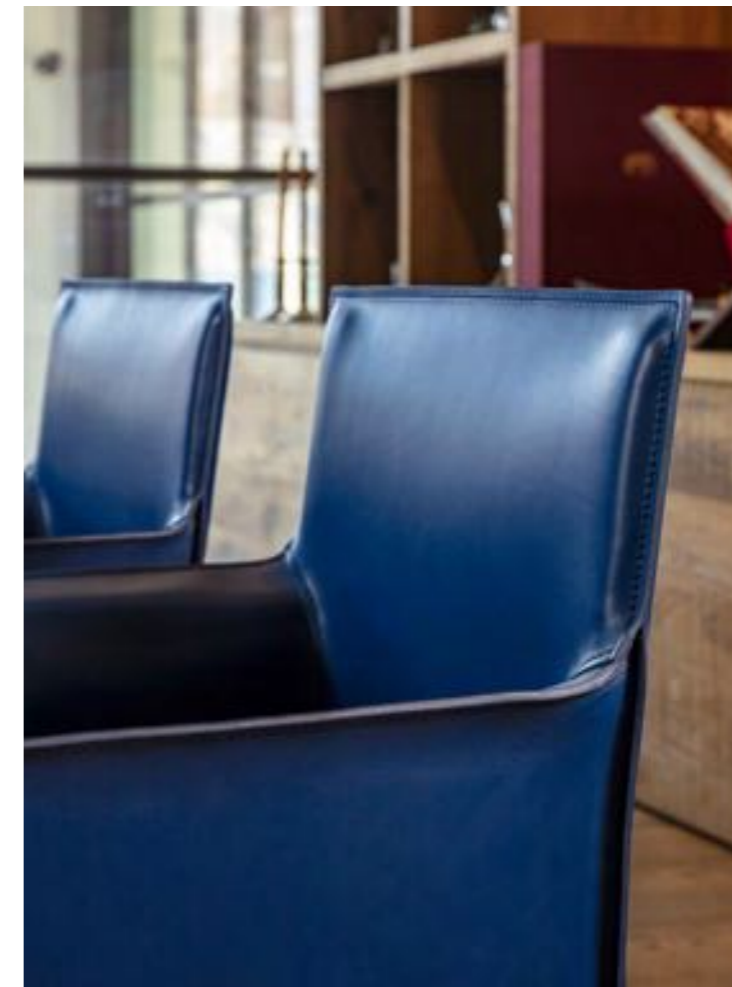
Pasqualina  
armchair



Pasqualina relax armchair code 10.0089 covering CPF27  
Indian side table code 40.0900 covering CTT275 top NC  
Duffy XL lamp code ACC.900.DUF structure OW covering CTT210  
Duffy table lamp code ACC.300.DUF structure OS covering CTT275  
Ro free standing room divider code ACC.200.9.FS structure NO covering CTT226/NC



Pasqualina  
armchair



Pasqualina armchair code 10.0090 covering CPF39  
Duffy fly lamp code ACC.600.DUF structure OW covering CTT214



## Gazzella armchair

Gazzella armchair code 10.0301 covering CPF32 structure GF  
Gazzella chair code 10.0300 covering CPF32 structure GF  
Fagus table code 40.0020 covering CPF32 top VEF



Lybra  
armchair



Lybra armchair code 10.0172C structure BO covering CTT281  
Star table code 40.0020 covering CTT281 lazy susan BC MARBLE

# Tom Kelley

designer



Born in East-Germany, after political problems and Stasi-Prison he studies in Aachen, Munich and then in Long Beach (California). Initially both painter and designer, brought by his work and studies to Italy, where he lives more or less since 20 years in Venice. He worked for many companies in several countries. Looking always for simplicity, he sees himself as primarily an observer, and believes that after a while all its observations become shapes, colors, projects and words. In these last recent years, in addition to the prominent work as designer, he restored private houses, including the famous Villa of Michael Thonet.

Nato nella Germania dell'Est, dopo problemi politici e dopo essere stato rinchiuso in prigione dalla Stasi, studia ad Aquisgrana, Monaco e poi a Long Beach (California). Prima pittore e poi designer, ha portato il suo lavoro e i suoi studi in Italia, dove vive da circa 20 anni a Venezia. Ha lavorato per molte aziende in diversi paesi. Sempre alla ricerca della semplicità, si considera prima di tutto un osservatore e ritiene che dopo un po' tutte le sue osservazioni vogliono uscire fuori in forme, composizioni, colori, progetti, parole. In questi ultimi anni, oltre alla preminente attività di designer, ha restaurato case private tra cui la villa del famoso Michael Thonet.

GAZZELLA  
SERIES



2015

2018



LEDERMANN  
SERIES



Ledermann chair code 10.0600 structure FG covering CTT275  
 Verve table code 40.0090 structure GF top VEF  
 Duffy fly lamp code ACC.600.DUF structure OS covering CTT214

## Chairs collection

### Ledermann Tom Kelley



LIGHT  
code 10.0604 structure FR  
covering CTT226



code 10.0600 structure FG  
covering CTT275



### Pasqualina Sergio Bianchi



code 10.0080  
covering CPF26



HIGH BACK  
code 10.0081  
covering CPF87

### Trama RedCreative



code 10.0182  
covering CPF48



code 10.0182  
covering PPF48



Couture chair code 10.0512 structure FG covering PFP46  
 Lullaby side table code 40.0800 structure GF top ST MARBLE  
 Tulip floor lamp code ACC.500.TUL structure OW covering CTT210  
 Duffy table lamp code ACC.300.DUF structure OS covering CTT210  
 Glimt mirror code ACC.100.80 structure NO covering CTT200

# Chairs collection

## Couture Stefano Bigi



code 10.0500 structure BR  
covering PFP46



OUTDOOR  
code 10.0500 structure BO  
shell BO



code 10.0512A structure NC  
covering CTT275

## Carlotta Giuliano Cappelletti



code 10.0035  
covering CPF21



code 10.0035  
covering CPF73

## Zen Christian Werner



code 10.0130 structure CR  
covering CTT203



code 10.0130 structure CR  
covering CPF55





# Chairs

collection

## Gazzella

Tom Kelley



code 10.0300 structure GF  
covering CTT263



code 10.0300 structure CR  
covering CPF55



code 10.0300 structure RM  
covering CPF75



code 10.0300W structure NSS  
covering CTT200



CLUB  
code 10.0304 structure BI  
covering CTT226



code 10.0300 structure RM  
covering FEZ63

## Bizzy

Franco Bizzozzero



code 10.0160 structure BI  
covering CTT210



code 10.0160W structure NO  
covering CTT200



code 10.0160W structure BR  
covering CTT275

**Bizzy**  
chair



Bizzy chair code 10.0160W structure BO covering CTT210



Bizzy chair code 10.0160 structure CR covering PPF57



## Gazzella chair



Gazzella chair code 10.0300 structure GF covering CPF32  
Fagus table code 40.0020 covering CPF32 top VEF

# Ledermann chair



Ledermann chair code 10.0600 structure FG covering CPF77  
Ledermann chair light code 10.0604 structure FG covering CPF77  
Abaco table code 40.0150 structure CPF77 top FG





Couture  
outdoor chair



Couture outdoor chair code 10.0500 structure NO shell NO

# Zen

chair



Zen chair code 10.0130 structure NO covering CTT200  
Butterfly table code 40.0902 covering CTT200 top VEF





## Trama chair



Trama chair code 10.0182 covering PFP42  
Crossover table code 40.0400 structure CR top BC MARBLE  
Trama chair code 10.0182 covering PFP48  
Trama chair code 10.0182 covering PFP01  
Trama chair code 10.0182 covering PFP56



Pasqualina  
chair

Pasqualina chair code 10.0080 covering CTT203  
Abaco table code 40.0150 structure CTT203 top RW



Carlotta  
chair



Carlotta chair code 10.0035 covering CTT210

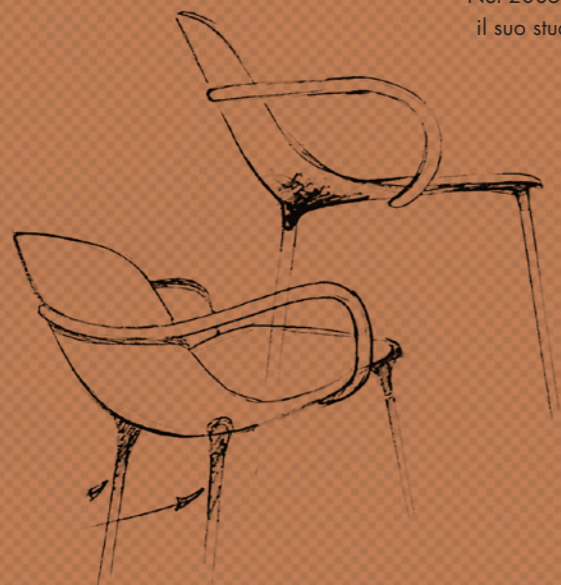
# Stefano Bigi

designer



Born in 1974, Stefano Bigi grew up between France and Italy. Out of this double culture, he has acquired a taste for the chic and the beautiful. After studying at Art School, he started a career in webdesign within a SSII before becoming self-employed. It was 10 years ago that he first began to sketch sofas, decorative objects, and his obsession: chairs. However, when he turned 31 he decided to live for his passion: to design furniture and decorative objects. Since 2005 he has established himself in Milan and founded his own company: Helldesign di Stefano Bigi.

Nato nel 1974, Stefano Bigi è cresciuto tra la Francia e l'Italia. Di questa doppia cultura ha coltivato il gusto dello chic e delle belle cose. Dopo aver studiato Arte in Francia, ha fatto esperienza e carriera nel campo del webdesign, inizialmente in una SSII francese, poi in modo autonomo. Però, durante quasi dieci anni, non ha mai smesso di disegnare divani, sedie e oggetti ed è solo a 31 anni che deciderà di realizzare questa sua passione: Il design di mobili e oggetti. Nel 2005 si trasferisce a Milano e fonda il suo studio: Helldesign di Stefano Bigi.



FRENCHKISS  
SERIES



2017

2017



RENDEZ-VOUS  
SERIES

COUTURE  
SERIES



2018



Frenchkiss stool code 10.0415 covering PFP42  
 Duffy table lamp code ACC.300.DUF structure OS covering CTT275  
 Duffy table lamp code ACC.300.DUF structure OW covering CTT210

## Stools collection

### Frenchkiss Stefano Bigi



code 10.0412 structure NC  
covering FEZ28 footrest CR



code 10.0414 structure NC  
covering FEZ63 footrest CR

### Ledermann Tom Kelley



code 10.0602 structure FR  
covering CPF55 footrest IS



LIGHT  
code 10.0606 structure FS  
covering CPF82 footrest IS



code 10.0603 structure FG  
covering CTT275 footrest BR

### Couture Stefano Bigi



code 10.0514A structure FR  
covering PFP49 footrest CR



code 10.0513 structure FR  
covering PFP54 footrest CR



## Stools collection

### Isotta Studio Nove.3



code 10.0611 structure GF  
covering CTT285

### Pasqualina RedCreative



code 10.0099  
covering CPF48 footrest NG



code 10.0096  
covering CPF48 footrest NG



code 10.0098  
covering CTT209 footrest AG



code 10.0095  
covering CTT209 footrest AG





Bizzy stool code 10.0165W structure BR covering CTT275  
 Gazzella stool code 10.0303 structure NO covering CTT200  
 Tulip lamp code ACC.530.TUL structure OW covering CTT 201  
 Lullaby high back padded relax armchair code 25.0024PAD structure BR covering PFP29  
 Lullaby coffee table code 40.0801 structure BR top EM MARBLE

## Stools collection

### Bizzy Franco Bizzozzero



code 10.0161W structure NO  
covering CTT200



code 10.0161W structure BO  
covering CTT210



code 10.0161 structure BI  
covering CTT210



code 10.0166 structure CR  
covering CTT200



code 10.0167 structure NS  
covering CTT200



code 10.0165 structure CR  
covering CPF43

### Gazzella Tom Kelley



code 10.0303 structure NO  
covering CTT200



code 10.0303 structure CR  
covering CTT275





Bizzy  
stool



Bizzy stool code 10.0165W structure BR covering CTT275

# Isotta

stool



Isotta stool code 10.0611 structure BO covering CPF76  
Rendez-vous bar table code 40.0503 structure BO base CR top BC MARBLE



Isotta  
stool



Isotta stool code 10.0611 structure GF covering CTT285





# Frenchkiss

stool



Frenchkiss stool code 10.0415 covering PFFP42  
Duffy table lamp code ACC.300.DUF structure OS covering CTT275  
Duffy table lamp code ACC.300.DUF structure OW covering CTT210

# Couture

stool



Couture stool code 10.0514A structure FR covering PPF49 footrest CR  
Couture stool code 10.0513 structure FR covering PPF54 footrest CR



# Ledermann

stool



Ledermann light stool code 10.0607 structure FS covering CPF43 footrest IS

Pasqualina  
stool

1 2 3 4 5 6 7 8 9 0  
# \* 0 0 0 0 0 0 0 0 0 0



Pasqualina bar stool code 10.0098 covering CFF25  
Tulip fly lamp code ACC.540.TUL covering CTT201



## Swivel stools collection

### Couture Stefano Bigi



code 10.0511 structure CR+BO  
covering PFP39



code 10.0511A structure CR+CR  
covering PFP11



### Frenchkiss Stefano Bigi



HIGH BACK  
code 10.0409 structure CR+BO  
covering PFP08 footrest BO+CR



LOW BACK  
code 10.0408 structure CR+BR  
covering FEZ85 footrest BR+CR



LOW BACK  
code 10.0408 structure CR+NO  
covering FEZ35 footrest NO+CR

### Amaranta Giuliano Cappelletti



code 25.0033 structure AL  
covering CPF43 base AL

Couture  
swivel stool



Couture swivel stool code 10.0511 structure CR+BO covering PFP39  
Rendez-vous bar table code 40.0503 structure CR+BO top BC MARBLE

Frenchkiss  
swivel stool



Frenchkiss low back swivel stool code 10.0408 structure CR+BR covering FEZ85 footrest BR+CR



## Amaranta

swivel stool



Amaranta swivel stool code 25.0033 structure CR+NO covering PFP60  
Rendez-vous bar table code 40.0503 structure CR+NO top NM MARBLE

# Giuliano Cappelletti

designer



Architect and designer, he graduated from the Politecnico of Milan, and in 1970 he founded his studio with the architect Enzo Pozzoli. Since 2012, he continues its activities as Giuliano Cappelletti & Partners along with his son Gabriel.

In the same year he opened a studio in Shanghai with some foreign partners to carry out projects of architecture and interior design. The study follows several projects, from project management to interior design, to pure architecture, actively taking part in competitions and national and international exhibitions, including the selection of the XVI Compasso d'Oro with the sink "Lavando" produced by ABC Cucine, the 5 Stelle Award Technotel, the award Donatella, the International Management selection. He also collaborates with leading companies in the field of design.

Architetto e designer, si laurea al Politecnico di Milano, e nel 1970 fonda lo studio associato con l'architetto Enzo Pozzoli. Dal 2012 prosegue la sua attività come Giuliano Cappelletti & Partners assieme al figlio Gabriele. Nello stesso anno apre uno studio a Shanghai con alcuni partner stranieri per realizzare progetti di architettura e di interior design. Lo studio segue diversi progetti, dal project management all'interior design, fino all'architettura pura, prendendo parte attivamente anche a concorsi e mostre nazionali e internazionali, tra cui la Selezione del XVI Compasso d'oro con il Lavello "Lavando" prodotto da ABC Cucine, il Premio 5 Stelle Technotel, il Premio Donatella, la Selezione International Management.

A questi lavori, affianca continue collaborazioni con importanti aziende nel settore del design.

CARLOTTA  
CHAIR



1991

2005



AMARANTA  
SERIES



Sydney sofa code 20.0027 structure GF covering YT UDA25 belts CTT263  
Sydney armchair code 20.0028 structure GF covering YT UDA25 belts CTT263  
Sydney round coffee table code 40.0702 structure GF covering CTT212

## Sofas collection

Sydney  
RedCreative



code 20.0027 structure GF  
covering YT UDA25 belts CTT263

Pasqualina  
RedCreative



code 10.0094  
covering CPF26



RELAX  
code 10.0097 covering CPF32

Sydney  
sofa



Sydney sofa code 20.0027 structure GF covering YT UDA25 belts CTT263  
Sydney armchair code 20.0028 structure GF covering YT UDA25 belts CTT263  
Sydney round coffee table code 40.0702 structure GF covering CTT212  
Sydney oval coffee table code 40.0701 structure GF covering CTT263

Sydney  
sofa



Sydney sofa code 20.0027 structure GF covering YT UDA25 belts CTT263



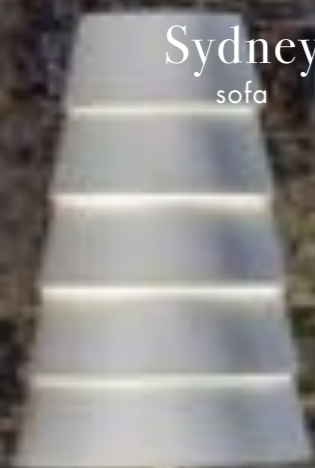
# Sydney

sofa



Sydney sofa code 20.0027 structure GF covering YT UDA25 belts CTT263  
Sydney armchair code 20.0028 structure GF covering YT UDA25 belts CTT263

Sydney  
sofa



Sydney armchair code 20.0028 structure GF covering YT UDA25 belts CTT263  
Sydney side table code 40.0704 structure GF covering CTT212  
Tulip floor lamp code ACC.500.TUL structure OW covering CTT210  
Bunch XL lamp code ACC.300.BUN structure BO covering CPF43



Sydney sofa code 20.0027 structure GF covering YT UDA25 belts CTT263  
Sydney oval coffee table code 40.0701 structure GF covering CTT263  
Sydney round coffee table code 40.0702 structure GF covering CTT212



Pasqualina  
sofa



Pasqualina small sofa code 10.0094 covering CPF26

# Sergio Bianchi

designer



Grassi&Bianchi studio, founded in 1984 from the architect Sergio Bianchi with his wife, is engaged mainly in building trade, from planning to restoration of private and public buildings. The pleasure of being designer comes also from the creation of pieces of furniture. "I often long for the past when my studio was concerned with the planning of furniture like chairs, tables and writing desks. Unfortunately now we have no time to apply ourselves to this sector and probably the right partners are missing". Enrico Pellizzoni represented the occasion to plan pieces of furniture of a simple elegance just drawing essential lines on a white sheet.

Lo studio Grassi&Bianchi, fondato nel 1984 dall'architetto Sergio Bianchi con la moglie, lavora principalmente nel settore dell'edilizia, dove si occupa della progettazione e del restauro di edifici pubblici e privati. Il piacere che si prova ad essere designer deriva anche dalla creazione di componenti d'arredo. "Spesso provo una sorta di nostalgia per gli anni in cui il mio studio si dedicava anche alla realizzazione di oggetti come sedute o tavoli e scrivanie. Purtroppo ora mancherebbe il tempo di farlo e soprattutto verrebbero a mancare i partner giusti".

Enrico Pellizzoni rappresenta l'occasione per progettare elementi di arredo tracciando sul foglio linee sobrie ed essenziali, per creare oggetti di grande equilibrio formale e di semplice eleganza.

FAGUS  
TABLE



1987

1998



PASQUALINA  
CHAIR



## Relax armchairs collection

### Mood RedCreative



code 20.0031 structure NO  
covering CTT275



code 20.0031W structure BO  
covering VINTAGE LEATHER



code 20.0031 structure NO covering PFP60  
POUFF  
code 20.0034 structure NO covering PFP60

### Daybed RedCreative



code 20.0008 structure BR  
covering PPFV



Lullaby relax armchair code 25.0023 structure BR covering CTT203 cushion PFP29  
 Indian coffee table code 40.0901 structure BR top/base NC covering CTT201  
 Duffy table lamp code ACC.300.DUF structure OB covering CTT 275  
 Route cart code ACC.600.ROU structure BR covering CTT275 wheels NC  
 Ro room divider code ACC.200.9.FS structure NO covering CTT203

## Relax armchairs collection

Sydney  
RedCreative



code 20.0028 structure NO  
covering YT UDA25 belts CTT263

Lullaby  
RedCreative



code 25.0023 structure BR  
covering CTT203 cushion PFP29



code 25.0024PAD structure GF  
covering PFP02 cushions PFP02  
POUFF  
code 60.0025PAD structure GF  
covering PFP02 cushions PFP02

Daybed  
relax armchair



Daybed relax armchair code 20.0008 structure BR covering PPFV



Daybed  
relax armchair



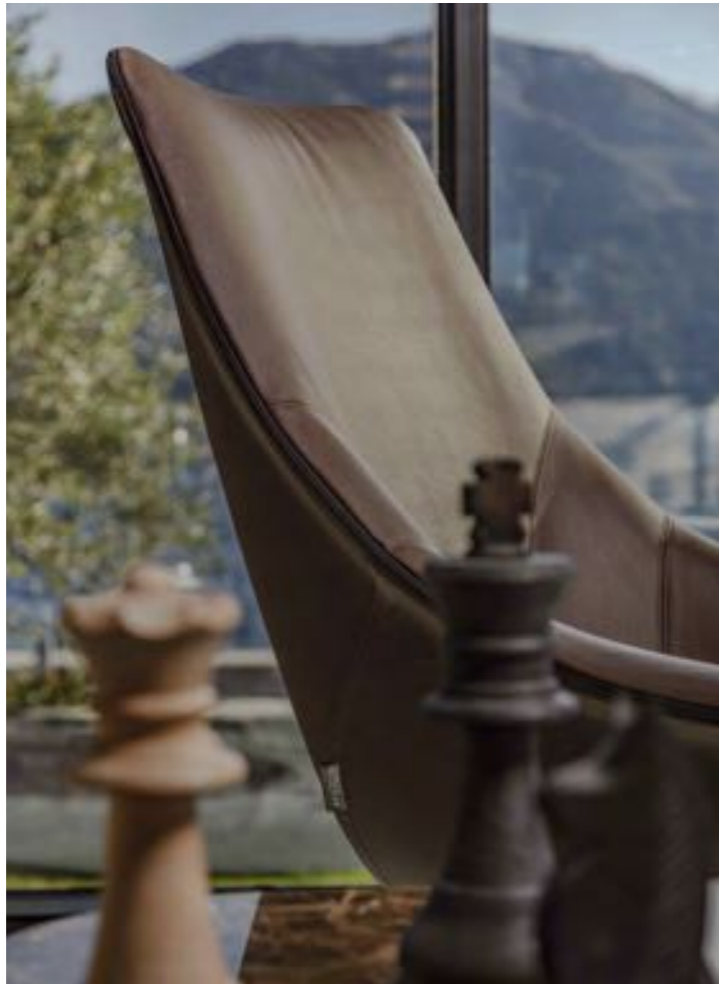
Daybed relax armchair code 20.0008 structure BR covering PPFV

Daybed  
relax armchair



Daybed relax armchair code 20.0008 structure BR covering PPFV

Lullaby  
relax armchair



Lullaby relax armchair code 25.0024PAD structure BR covering PFP29 cushion PFP29  
Lullaby coffee table code 40.0801 structure BR top EM MARBLE



Lullaby  
relax armchair



Lullaby relax armchair code 25.0024PAD structure BR covering PFP29  
Lullaby coffee table code 40.0801 structure BR top EM MARBLE



# Lullaby

relax armchair



Lullaby relax armchair code 25.0024 structure BR covering CPF27 cushions PFP26  
Lullaby pouff code 60.0025 structure BR covering PFP26+CTT203  
Duffy table lamp code ACC.300.DUF structure OS covering CTT275

D  
I  
N  
E  
R

Lullaby  
relax armchair

Lullaby relax armchair code 25.0024PAD structure GF covering PFP02  
Lullaby pouff code 60.0025PAD structure GF covering PFP02  
Tulip floor lamp code ACC.500.TUL structure OS covering CTT275  
Raily writing desk code ACC.700.RAI structure BR covering CTT275 top NC  
Clint mirror code ACC.100.100 structure BO covering CTT210  
Lullaby side table code 40.0800 structure GF top ST MARBLE  
Crossover console code 40.0705 structure CR covering ST MARBLE  
Tulip mini lamp code ACC.520.TUL structure OS covering CTT201



Sydney  
relax armchair



Sydney relax armchair code 20.0028 structure GF covering YT UDA25 belts CTT263



## Mood

relax armchair



Mood woven armchair code 20.0031W structure BO covering VINTAGE LEATHER  
Crossover side table code 40.0420 structure BO top BC MARBLE

Mood  
relax armchair



Mood relax armchair code 20.0031 structure NO covering CTT275  
Crossover magazine rack code 40.0405 structure NO covering CTT275





Mood  
relax armchair



Mood relax armchair code 20.0031 structure NO covering PFP60  
Mood pouff code 20.0034 structure NO covering PFP60

# Christian Werner

designer



Christian Werner was born in Berlin in 1959. He studied industrial design in both Berlin and Hamburg, but was finally drawn to the latter, where he has lived since 1984. He founded his own product design and interior architecture agency in 1992, where he designs furniture for prominent international manufacturers. Furniture is by no means his only arena for expression, he has also undertaken various projects for exhibition stands, restaurants, PR agencies, shops, and franchises.

He received numerous awards, including three Red Dot awards.

Christian Werner è nato a Berlino nel 1959. Ha studiato design industriale sia a Berlino che ad Amburgo, ma alla fine è stato attratto da quest'ultimo, dove vive dal 1984. Nel 1992 ha fondato il proprio studio di product e interior design, dove progetta mobili per produttori internazionali di primo piano. L'arredamento non è il suo unico ambito di espressione, ha anche intrapreso diversi progetti per stand fieristici, ristoranti, agenzie di PR, negozi e franchising. Ha ricevuto numerosi premi, tra cui tre premi Red Dot.

1999



ZEN  
SERIES



2

Living Tables



## Tables collection

Verve  
Giulio Manzoni



code 40.0090 structure IL  
top VET GLASS  
size Ø160CM

Abaco  
Franco Bizzozzero



code 40.0149 structure CTT200  
top VEN GLASS

Crossover  
RedCreative



code 40.0400 structure CR  
top VEF



## Tables collection

Butterfly  
Studio Nove.3



code 40.0902 structure CTT200  
top VEF

Star  
RedCreative



code SMT.150C structure CTT281 top CTT281  
lazy susan SMT.150C.LAZ

Fagus  
Sergio Bianchi



code 40.0020 structure CPF32  
top VEF

# Butterfly

table



Butterfly table code 40.0902 structure CTT200 top VEF  
Zen chair code 10.0130 structure NO covering CTT200  
Musa bookcase code ACC.800.MUS covering CTT275 shelves VBR



Butterfly  
table



Butterfly table code 40.0902 structure CTT200 top VEF

Verve  
table



Verve table code 40.0090 structure GF top VEF  
Pasqualina armchair code 10.0090 covering CTT203  
Ro free standing room divider code ACC.200.9.FS structure NO covering CTT203

Crossover  
table



Crossover table code 40.0400 structure CR top BC MARBLE  
Trama chair code 10.0182 covering PFP42

Crossover  
table



Crossover table code 40.0400 structure CR top VEF  
Pasqualina armchair code 10.0090 covering CTT203  
Tulip fly lamp code ACC.540.TUL covering CTT201

Fagus  
table

Fagus table code 40.0020 structure CPF32 top VEF  
Gazzella chair code 10.0300 structure GF covering CPF32  
Gazzella armchair code 10.0301 structure GF covering CPF32

Fagus  
table



Fagus table code 40.0020 structure CPF32 top VEF

Abaco  
table



Abaco table code 40.0150 structure CPF77 top FG  
Ledermann chair code 10.0600 structure FG covering CPF77  
Ledermann chair light code 10.0604 structure FG covering CPF77

Star  
table



Star  
table



Star table code SMT.150C structure CTT281 top CTT281 lazy susan BC MARBLE  
Lybra armchair code 10.0172C structure BO covering CTT281





## Consoles collection

Sydney  
RedCreative



code 40.0703 structure GF  
top ST MARBLE

Crossover  
RedCreative



code 40.0705 structure GF  
top ST MARBLE

Sydney  
console



Sydney console code 40.0705 structure GF top ST MARBLE



Sydney  
console



Sydney console code 40.0703 structure GF top VEF

# Crossover

console



Crossover console code 40.0705 structure GF top ST MARBLE  
Glimt mirror code ACC.100.165 structure GF covering CTT263



# Franco Bizzozzero

designer



Born in 1948 in Cantù, center of the Furniture Art, he gained in this field his education and his first planning researches, collaborating with magazines and teaching Technique of Furniture at the training center. He attended the University "Polytechnic" in Milan, where he graduated in 1973 arguing his thesis on the theme "the handicraft as essential component of the structure of an area". As a designer focuses his attention in industrial design. His professional activity is also supported by the institutional one, as president of CLAC, a non-profit society in Wood-Furniture created to promote the design and technological innovation of small and medium company.

Nato nel 1948 a Cantù, centro dell'Arte Ebanistica, ha maturato in quest'ambito la sua formazione e le sue prime ricerche progettuali, collaborando con riviste ed insegnando Tecnica dell'Arredamento presso il centro di Formazione. Frequenta il Politecnico di Milano, dove si laurea nel 1973 a tema "l'artigianato come componente essenziale della struttura di un territorio". Come designer si esprime con particolare attenzione rivolta alla progettazione industriale. L'attività professionale è inoltre affiancata da quella istituzionale come presidente del CLAC, società no-profit del sistema Legno-Arredo nata per promuovere il design e l'innovazione tecnologica nella piccola e media azienda.

ABACO  
SERIES



2002

2005



BIZZY  
SERIES



## Writing desks collection

Raily  
Studio Nove.3



code ACC.700.RAI structure GF  
covering CPF77 top FG

Raily  
writing desk



Raily writing desk code ACC.700.RAI structure GF covering CPF77 top FG  
Frenchkiss high back swivel chair code 10.0417 structure CR covering PFP47  
Clint mirror code ACC.100.165 structure GF covering CTT263





Raily  
writing desk



Raily writing desk code ACC.700.RAI structure GF covering CPF77 top FG

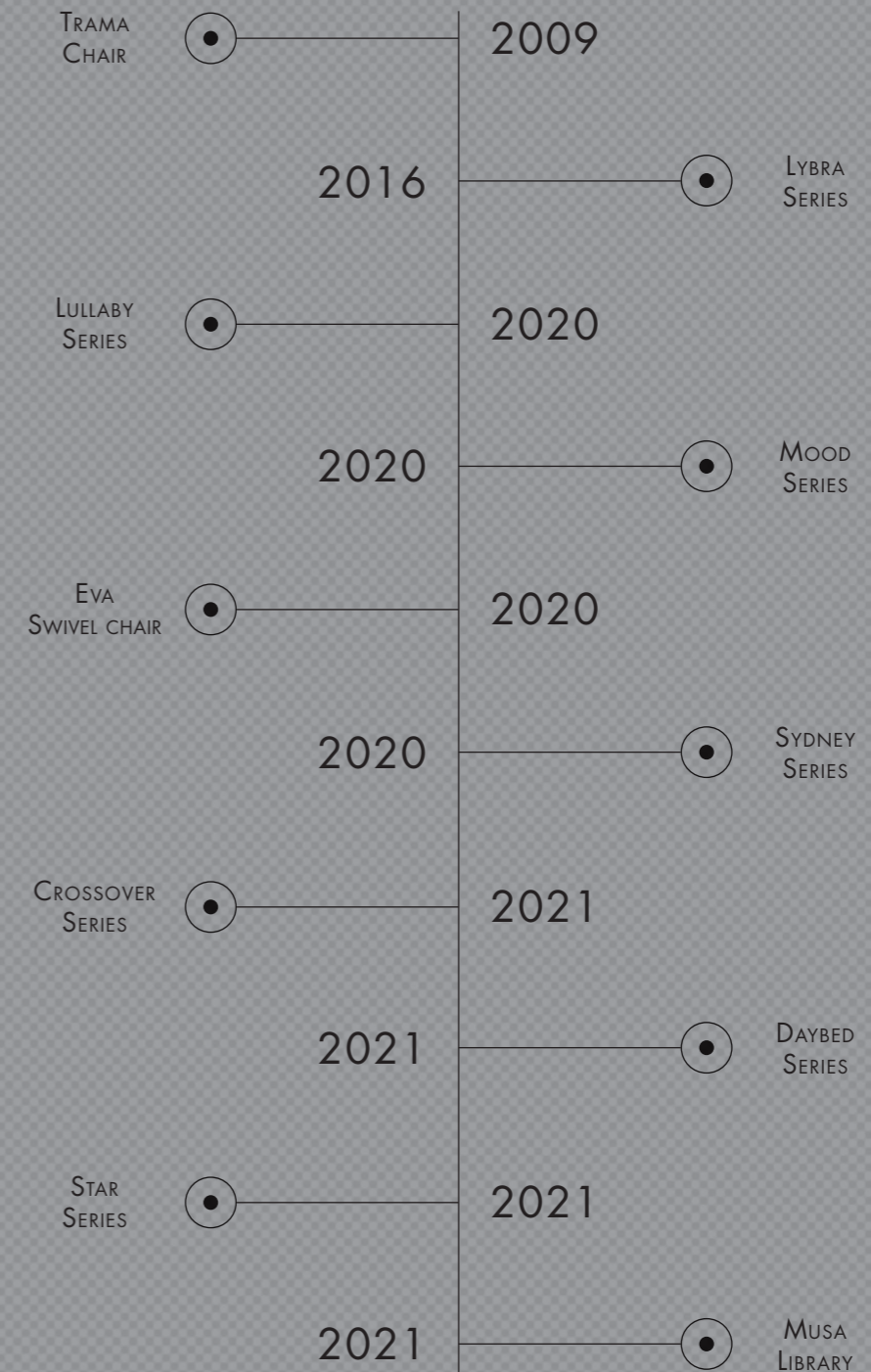
# RedCreative

designer



Experiencing the potentialities of hard and soft leather: this is the core of Enrico Pellizzoni, a company that can boast a long tradition in high quality manufacturing. Creative and research projects are springing up to carry matter and technologies towards product innovation. The purpose is to supply a wider and modern selection of new finishes, colors and environmentally sustainable materials to meet the multiple needs of the market in which Enrico Pellizzoni has established as a specialist in leather furniture.

Sperimentare le potenzialità di cuoio e pelle: questo è il cuore di Enrico Pellizzoni, azienda ricca di una lunga tradizione nella lavorazione di alta qualità. Nascono progetti di ricerca e creatività che declinano materia e tecnologie verso l'innovazione del prodotto. Una gamma ampliata e contemporanea di nuove finiture, colori e materiali ecosostenibili viene proposta in sintonia con le molteplici esigenze del mercato verso il quale Enrico Pellizzoni si propone come specialista nell'arredamento in cuoio e pelle.





## Coffee tables collection

### Indian Studio Nove.3



code 40.0901 structure BR  
top/base FR covering CTT281



SIDE TABLE  
code 40.0900 structure BR  
top/base FR covering CTT281



code 40.0901 structure BR  
top base NC covering CTT201



SIDE TABLE  
code 40.0900 structure BR  
top base NC covering CTT275

### Lullaby RedCreative



code 40.0801 structure BR  
top EM MARBLE



SIDE TABLE  
code 40.0800 structure GF  
top ST MARBLE



Crossover side table code 40.0420 structure BO top BC MARBLE  
 Mood woven relax armchair code 20.0031W structure BO covering VINTAGE LEATHER

## Coffee tables collection

### Crossover RedCreative



SIDE TABLE  
code 40.0420 structure NO  
top NM MARBLE



MAGAZINE RACK  
code 40.0405 structure NO  
covering CTT275

### Sydney RedCreative



code 40.0704 structure GF  
top CTT212



code 40.0702 structure GF  
top CTT212



code 40.0701 structure GF  
top CTT263



## Crossover

coffee table



Crossover side table code 40.0402 structure NO top NM MARBLE  
Pasqualina relax armchair code 10.0089 covering CTT263

Indian  
coffee table



Indian coffee table code 40.0901 structure BR covering CTT201 top/base NC





## Indian

coffee table



Indian side table code 40.0900 structure BR covering CTT275 top/base NC

Indian  
coffee table





## Indian

coffee table



Indian side table code 40.0900 structure BR covering CTT281 top/base FR  
Indian coffee table code 40.0901 structure BR covering CTT281 top/base FR

Sydney  
coffee table



Sydney oval coffee table code 40.0701 structure GF top CTT263  
Sydney round coffee table code 40.0702 structure GF top CTT212



## Sydney

coffee table



Sydney side table code 40.0704 structure GF top CTT212  
Sydney round coffee table code 40.0702 structure GF top CTT212  
Sydney relax armchair code 20.0028 structure GF covering YT UDA25 belts CTT263

# Lullaby

coffee table



Lullaby side table code 40.0800 structure GF top ST MARBLE  
Lullaby coffee table code 40.0801 structure BR top EM MARBLE  
Lullaby relax armchair code 25.0024PAD structure GF covering PFP02



# Studio Nove.3

designer



Luca Giacomelli and Lorenzo Rossotti both born in 1993, graduated in Product Design at the European Institute of Design in Milan in 2015. Since 2015 they have been collaborating with design studios in Milan also working in the field of packaging. In 2018 they founded together Design Studio Nove.3 in Milan, dealing with product design and design consulting. In the meantime, they take part in some contests with the studio, receiving international awards from important companies in the furniture sector.

Luca Giacomelli e Lorenzo Rossotti, nati nel 1993, si sono laureati in Product Design presso l'Istituto Europeo di Design di Milano nel 2015. Dal 2015 collaborano con studi di design a Milano lavorando anche nel campo del packaging. Nel 2018 hanno fondato il Design Studio Nove.3 a Milano, occupandosi di design del prodotto e consulenza progettuale. Nel frattempo, partecipano ad alcuni concorsi con lo studio, ricevendo premi internazionali da importanti aziende del settore dell'arredamento.



RAILY  
WRITING DESK



2020

2020



ROUTE  
CART

PRIAMO  
SWING



2020

2020



INDIAN  
SERIES

BUTTERFLY  
SERIES



2021

2021



ISOTTA  
STOOL



## Bar tables collection

Rendez-vous  
Stefano Bigi



code 40.0501 structure CR+BR  
top EM MARBLE



code 40.0502 structure CR+NO  
top NM MARBLE



code 40.0503 structure CR+BO  
top BC MARBLE



code 40.0500 structure CR+BO  
top LOC

# Rendez-vous

bar table



Rendez-vous bar table code 40.0503 structure CR+BO top BC MARBLE  
Couture swivel stool code 10.0510 structure BO+CR covering PFP39





## Rendez-vous

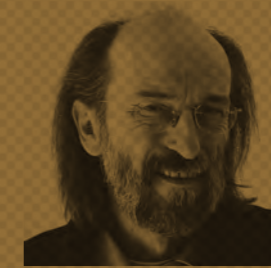
bar table



Rendez-vous bar table code 40.0503 structure BO+CR top NM MARBLE  
Amaranta swivel stool code 25.0033 structure CR covering PFP60

# Giulio Manzoni

designer



Architect Giulio Manzoni works mainly in the field of industrial design with a focus on new technologies and the study of new materials, preferring the design of multifunctional products. Ongoing research and his capacity for invention led him to manufacture, in the forty years of career, innovative products that have contributed to the history of furniture. Hipod and Lopod are the result of a careful analysis of product and a perfect integration between ergonomics and aesthetics.

L'architetto Giulio Manzoni opera prevalentemente nel campo dell'industrial design con particolare attenzione alle nuove tecnologie ed allo studio di nuovi materiali, prediligendo la progettazione di prodotti polifunzionali. La continua ricerca e la propria capacità inventiva lo hanno portato a realizzare, in quarant'anni di professione, prodotti innovativi che hanno contribuito alla storia del mobile. Hipod e Lopod sono frutto di un'attenta analisi di prodotto e di una perfetta integrazione tra ergonomia ed estetica.



VERVE  
TABLE



2008

2009



HIPOD  
SERIES

LOPOD  
SERIES



2009

4

Office Seating



Eva swivel chair code 10.0610 structure CR covering PFP46  
 Duffy table lamp code ACC.300.DUF structure OW covering CTT214

## Swivel chairs collection

### Eva RedCreative



code 10.0609 structure CR  
covering CTT281



code 10.0609 structure CR  
covering PFP46



code 10.0610 structure CR  
covering PFP46

### Couture Stefano Bigi



code 10.0502 structure CR  
covering PFP47



code 10.0504A structure CR  
covering PFP24



code 10.0507 structure CR  
covering PFP30  
arm 10.ARM lacquering BR



## Swivel chairs collection

### Frenchkiss Stefano Bigi



HIGH BACK  
code 10.0417 structure CR  
covering PFFP47



HIGH BACK  
code 10.0403 structure CR  
covering PFFP10



LOW BACK  
code 10.0402 structure CR  
covering CUZ3E

### Hipod&Lopod Giulio Manzoni



code 10.0194 structure BR  
covering PFFP11



code 10.0192 structure BR  
covering PFFP11



## Swivel chairs collection

Web  
Fauciglietti Engineering / RedCreative



code 10.0114 structure CR  
covering PFFP60



code 10.0119T structure CR  
covering PFFP01



code 10.0113 structure CR  
covering PFFP60



code 10.0116 structure CR  
covering PFFP03



code 10.0117B structure CR  
covering PFFP01



code 10.0115  
covering PFFP60



code 10.0108 structure AL  
covering PFFP02



code 10.0112 structure CR  
covering PFFP01



code 10.0107 structure CR  
covering PFFP19



Lybra high back comfort swivel chair code 10.0171C structure CR covering CTT212

## Swivel chair collection

### Pasqualina Sergio Bianchi



HIGH BACK  
code 10.0093 structure CR  
covering CPF63



LOW BACK  
code 10.0092 structure NS  
covering CPF63

### Amaranta Giuliano Cappelletti



code 25.0034 structure CR  
covering CPF43

### Lybra RedCreative



LOW BACK  
code 10.0170C structure CR  
covering CTT201



HIGH BACK  
code 10.0171C structure CR  
covering CTT226



HIGH BACK  
code 10.0171C structure CR  
covering CTT201

Hipod  
swivel chair



Hipod swivel chair code 10.0194 structure BR covering PFPF11





## Lopod swivel chair



Lopod swivel chair code 10.0192 structure BR covering PFPF11  
Butterfly desk code 40.0901 base/top CPF27 modesty panel BR

# Pasqualina

swivel chair



Pasqualina President high back swivel chair code 10.0093XL structure BR covering CTT201  
Strato Senior desk code 210.S21F structure BR covering CTT201





# Pasqualina

swivel chair



Pasqualina President high back swivel chair code 10.0093XL structure BR covering CTT201

Couture  
swivel chair



Couture swivel chair code 10.0507A structure CR covering PFP24





Amaranta  
swivel chair



Amaranta base 4 swivel code 25.0035 structure CR covering PPF11  
Butterfly desk code 40.0901 base/top CPF27 modesty panel BR

Eva  
swivel chair



Eva swivel chair code 10.0609 structure CR covering CTT281  
Eva swivel chair code 10.0609 structure CR covering PFP46  
Eva swivel chair code 10.0610 structure CR covering PFP46  
Eva swivel chair code 10.0609 structure CR covering CTT281



# Frenchkiss

swivel chair



Frenchkiss high back swivel chair code 10.0417 structure GF covering PPF47

Web  
swivel chair



Web low back swivel chair code 10.0117B structure CR covering PPF60  
Web swivel chair code 10.0108 structure CR covering PPF60  
Star meeting desk code SMT.150C structure CTT200 top VEF



# Fauciglietti Engineering

designer



Fauciglietti Engineering studio was founded in 1986 by Renzo Fauciglietti together with his wife Graziella Bianchi: the aim was "the search and development of new products of design as well as their planning and their production". The prizes and awards they have received (Techhotel in Genoa, Compasso d'Oro, Neste Form in Finland, the silver medal at Batimat in Paris) are the result of a constant job of research and innovation in the product development. Furthermore Renzo Fauciglietti is teacher at Centro di Cultura Scientifica "Alessandro Volta" in Como and university lecturer at Politecnico and Bocconi in Milan.

Lo studio Fauciglietti Engineering viene fondato nel 1986 da Renzo Fauciglietti insieme alla moglie Graziella Bianchi: l'intento è "contribuire alla ricerca ed allo sviluppo di nuovi prodotti di design, alla loro progettazione ed alla loro creazione". Il premio Techhotel di Genova, le segnalazioni al Compasso d'oro ed al Neste Forma Finlandia, la medaglia d'argento al Batimat di Parigi sono i risultati di un lavoro costante di ricerca e di innovazione nello sviluppo del prodotto, un impegno al quale si affianca l'attività di docenza al Centro di Cultura Scientifica "Alessandro Volta" di Como, al Politecnico di Milano e all'Università degli Studi "Bocconi" di Milano.

VALEO  
SERIES



1998

1999



WEB  
SERIES



Amaranta waiting area BAR code 50.0001 structure AL  
SEAT 50.0002 covering LAC+CPF20  
TABLE 50.0003 covering LAC

## Waiting area collection

### Couture Stefano Bigi



BAR  
code 50.0004 structure AL  
SEAT  
code 50.0005 covering PPF39

### Amaranta Giuliano Cappelletti



BAR  
code 50.0001 structure AL  
SEAT  
code 50.0002 covering CPF43  
TABLE  
code 50.0003 covering CPF43

# Couture

waiting area



Couture waiting area BAR code 50.0004 structure BO  
SEAT code 50.0005 covering CTT281



# Danilo Bianchi

designer



His background is linear and traditional for people who aim to become an architect: he attended the Institute of Art in Cantu and he got his diploma. He started soon a collaboration with a design studio near where he lived. This working experience lasted ten years. In 1989, at the age of 31 years old, he opened his own studio. "I interpret my job as a continuous challenge. Whether with myself or with the company that places the order. The blank sheet is an enemy to pull down every time: in order to win a new idea or an original line, that draws an item in an elegant way, are always needed".

Il cammino si snoda lungo un percorso assolutamente lineare: la frequenza all'Istituto di Arte di Cantù, il diploma e l'immediata collaborazione con uno Studio di architettura. Nel 1989, a 31 anni, arriva il momento di aprire il proprio Studio: "Considero il mio lavoro come una sfida continua. Sia con se stessi, sia con l'azienda che commissiona il lavoro. Il foglio bianco è ogni volta un nemico da abbattere: è necessario avere sempre un'idea nuova, una linea originale che riesca a tracciare il contorno di un oggetto elegante".

2005



STRATO  
SERIES

4

# Office Tables





Strato Junior desk code 210.Y21P structure NO covering CTT200  
 Web President low back swivel chair code 10.0116 structure NO+CR covering PFP60  
 Web President high back with headrest swivel chair code 10.0114 structure NO+CR covering PFP60  
 Duffy table lamp code ACC.300.DUF structure OS covering CTT275

## Desks collection

Strato  
Danilo Bianchi



DESK  
code 210.Y21P structure AB top CPF55  
DESK RETURN  
code 210.PED2R structure AB top CPF55



DESK  
code 210.Y21P structure AB top CPF55  
DESK RETURN  
code 210.PED3 structure AB top CPF55



DESK  
code 210.S18F structure AB top and panels CPF27  
DESK RETURN  
code 210.PEDSL structure AB top CPF27



DESK  
code 210.S21F structure AB top CPF27  
DESK RETURN  
code 210.PEDS structure AB top CPF27



DESK  
code 210.S18F structure AB top CTT201



## Desks collection

### Butterfly Studio Nove.3



code 40.0901 base/top CPF27  
modesty panel BR

### Fusion Daniele Lo Scalzo Moscheri



DESK  
code 220.S24F structure NC top CPF73  
CHEST OF DRAWERS  
code 220.03CG structure NC top CPF73



DESK  
code 220.S21F structure CPF73 top CPF73  
CHEST OF DRAWERS  
code 220.03CG structure CPF73 top CPF73



DESK  
code 220.S21F structure NC top CPF73  
DESK RETURN  
code 220.PEDE2 structure NC top CPF73



DESK  
code 220.S21F structure NC top CPF73  
DESK RETURN  
code 220.PEDR structure NC top CPF73



Abaco desk code 40.0151 structure CPF63 top LACQUERED GLASS  
 Web high back with headrest swivel chair code 10.0114 structure CR covering PPF60  
 Web low back swivel chair code 10.0108 structure CR covering PPF60

## Desks collection

### Abaco Franco Bizzozzero



DESK  
code 40.0150 structure CPF63 top CPF63  
 DESK RETURN  
code 200.AP10R structure CPF63 top CPF63  
 MODESTY PANEL  
code 200.MOD structure CPF63



DESK  
code 40.0150 structure CTT209 top RS  
 DESK RETURN  
code 200AP10R structure CTT209 top RS  
 MODESTY PANEL  
code 200.MOD structure CTT209

Butterfly  
desk



Butterfly desk code 40.0901 base/top CPF27 modesty panel BR  
Hipod swivel chair code 10.0194 structure BR covering PFPF11  
Lopod swivel chair code 10.0192 structure BR covering PFPF11



Butterfly  
desk



Butterfly desk code 40.0901 base/top CPF27 modesty panel BR

Butterfly  
desk



Butterfly desk code 40.0901 base/top CPF27 modesty panel BR





## Strato desk



Strato Senior desk code 210.S21F structure BR base/top CTT201  
Pasqualina President high back swivel chair code 10.0093XL structure BR covering CTT201  
Pasqualina relax armchair code 10.0089 covering CTT201

Abaco  
desk



Abaco desk code 40.0150 structure CPF63 top LACQUERED GLASS

# Fusion

desk



Fusion desk code 220.S21F structure EB covering CTT201  
Fusion desk return code 220.PEDE2 structure EB covering CTT201  
Lybra low back swivel chair code 10.0170C structure CR covering CTT201  
Lybra high back swivel chair code 10.0171C structure CR covering CTT201

# Daniele Lo Scalzo Moscheri

designer



Born in Milan November 9, 1963. Dr Architect, graduated at Politecnico of Milano in Architecture in Milan, 1987. Master in "Advanced Technology Application in Industrial Design Manufacture" Tampa University, Florida USA, 1988. Piero Lissoni design team's consultant partner since 1987 until 1993, when he started his independent professional studio in Milan, in product design and advertising. His style is concise, up to date, and play with the happy composition of different materials: the sign is sharp and accurate, enriched by technological innovation and "ready made" culture. Daniele loves domestic design shaped to show the personality of the individual but without being trivially downgraded to a service tag.

Nato a Milano il 9 novembre 1963. Laureato alla facoltà di Architettura di Milano nel 1987. Master in "Advanced Technology Application on Industrial Design Manufactury" Tampa University, Florida USA, 1988. Dal 1987 consulente di Piero Lissoni fino al 1993, anno in cui apre lo studio professionale in via De Sanctis a Milano che si occupa di product design e advertising. Il suo stile è conciso, di tendenza, e gioca con il felice incontro di materiali diversi: il segno è nitido e preciso, arricchito dalla innovazione tecnologica e dalla cultura "ready made". Ama il design domestico pensato per condividere la personalità dell'individuo ma senza essere banalmente un oggetto di servizio.

2006



FUSION  
DESK



## Meeting tables collection

Abaco  
Franco Bizzozzero



code 200.AB24 structure CTT210  
top LACQUERED GLASS

Valeo  
Fauciglietti Engineering



code VMT.S06 structure CPF75 legs BR  
top VBR GLASS



code VMT.VP8 structure CPF72 legs GF  
top VSI GLASS

Star  
RedCreative



code SMT.150C structure CTT281  
top CTT281

Abaco  
meeting table



Abaco meeting table code 200.ABM600 structure CPF57 top CPF57  
Pasqualina armchair code 10.0090 covering CTT210

Valeo  
meeting table



Valeo meeting table code VMT.S06 structure CPF75 legs BR top VBR GLASS  
Valeo meeting table code VMT.S05 structure CTT211 top VSI GLASS  
Lybra low back swivel chair code 10.0170C structure CR covering CTT211





Valeo  
meeting table



Valeo meeting table code VMT.VP8 structure CPF72 legs TI top VSI GLASS  
Zen chair code 10.0130 structure CR covering CPF72

Star  
meeting table



Star meeting table code SMT.150C structure CTT200 top VEF  
Web swivel chair with arms code 10.0108 structure CR covering PFP60

# Stefano Santilio

designer



Born in 1971, Stefano Santilio graduated in Architecture at "Politecnico di Milano".

He has gained several experiences with renowned companies in the retail and office sector. He's interested about design, materials and production technologies; his passion for light and product design start to become real when he has the opportunity to experiment solutions related to leather processing. In collaboration with Enrico Pellizzoni's R&D office, his collections of lamps and objects are born, characterized by simplicity and attention to detail.

Nato nel 1971, Stefano Santilio si è laureato in architettura al Politecnico di Milano. Nel corso degli anni ha maturato diverse esperienze presso rinomate aziende del settore retail ed ufficio. Appassionato di design, materiali e tecnologie di produzione, mette a frutto la sua passione per la luce e il product design quando ha la possibilità di sperimentare diverse soluzioni formali legate alla lavorazione del cuoio.

In collaborazione con l'ufficio R&D della Enrico Pellizzoni nascono così le sue collezioni di lampade e oggetti, caratterizzati da semplicità e cura nei dettagli.

DUFFY  
LAMPS



2019

2020



TULIP  
LAMPS

BUNCH  
LAMPS



2020



5

Lighting



# Lamps collection

## Duffy Stefano Santilio



TABLE  
code ACC.300.DUF structure OW  
covering CTT211



FLY  
code ACC.600.DUF structure OW  
covering CTT275



XL  
code ACC.900.DUF structure OW  
covering CTT275

## Bunch Stefano Santilio



code ACC.300.BUN structure BO  
covering CPF43

## Tulip Stefano Santilio



FLY  
code ACC.540.TUL  
covering CTT201



FLOOR  
code ACC.500.TUL structure OS  
covering CTT275



SMALL  
code ACC.530.TUL structure OW  
covering CTT201



MINI  
code ACC.520.TUL structure OS  
covering CTT201

Duffy  
lamp



Duffy table lamp code ACC.300.DUF structure OS covering CTT210  
Duffy table lamp code ACC.300.DUF structure OS covering CTT275



Duffy  
lamp



Duffy fly lamp code ACC.600.DUF structure OW covering CTT214

Duffy  
lamp



Duffy fly lamp code ACC.600.DUF structure OW covering CTT275

# Duffy lamp



- Duffy XL lamp code ACC.900.DUF structure OW covering CTT210
- Duffy XL lamp code ACC.900.DUF structure OW covering CTT275
- Tulip small lamp code ACC.530.TUL structure OW covering CTT201
- Bizzy stool code 10.0165W structure BR covering CTT275
- Gazzella stool code 10.0303 structure NO covering CTT200
- Lullaby high back padded relax armchair code 25.0024PAD structure BR covering PFP29
- Lullaby coffee table code 40.0801 structure BR top EM MARBLE





## Tulip lamp



Tulip mini lamp code ACC.520.TUL structure OS covering CTT201  
Pasqualina relax armchair code 10.0089 covering CPF27  
Tulip small lamp code ACC.530.TUL structure OW covering CTT201

# Tulip lamp



Tulip fly lamp code ACC.540.TUL covering CTT201  
Pasqualina stool code 10.0098 covering CPF25





# Tulip lamp



Tulip floor lamp code ACC.500.TUL structure OS covering CTT275

# Bunch lamp



Bunch small lamp code ACC.100.BUN covering CTT201  
Bunch medium lamp code ACC.200.BUN covering CTT275  
Bunch XL lamp code ACC.300.BUN covering CPF43  
Sydney sofa code 20.0027 structure GF covering YT UDA25 belts CTT263  
Sydney oval coffee table code 40.0701 structure GF covering CTT263  
Sydney round coffee table code 40.0702 structure GF covering CTT212



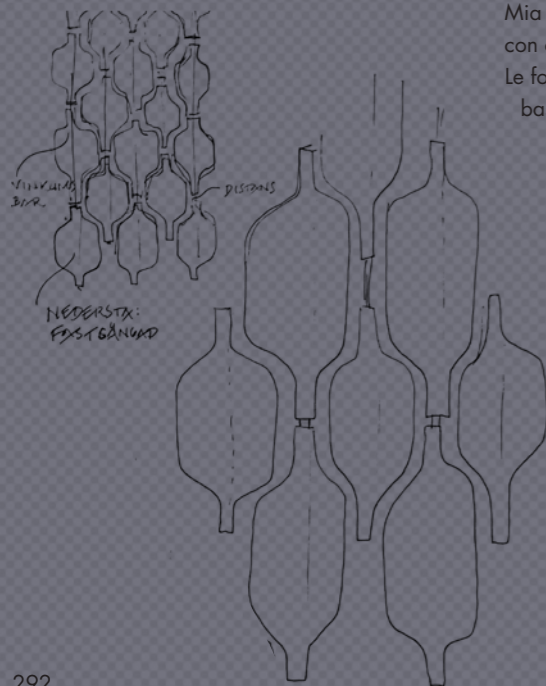
# Mia Cullin

designer



Mia Cullin studied at Konstfack, University College of Arts, Crafts and Design, as well as abroad at the Denmark Design School in Copenhagen and at Accademia di Moda e Design in Florence. She founded her design studio after having graduated from Konstfack in 1998. Her works span from interior design to furniture and smaller objects. A deeply nourished interest in traditional craftsmanship and visually striking constructions inspires Mia Cullin's work with interior architecture work as well as with design objects in all kind of sizes. Clean, straightforward and often basic geometric shapes are combined with handicraft details.

Mia Cullin ha studiato al Konstfack, University College of Arts, Crafts and Design, oltre che all'estero presso la Denmark Design School di Copenhagen e all'Accademia di Moda e Design di Firenze. Ha fondato il suo studio di design dopo essersi laureata alla Konstfack nel 1998. Le sue opere spaziano dall'interior design ai mobili e agli oggetti più piccoli. Un interesse profondamente nutrito per l'artigianato tradizionale e le costruzioni visivamente suggestive ispira il lavoro di Mia Cullin con il lavoro di architettura d'interni e con oggetti di design di ogni tipo di dimensione. Le forme geometriche pulite, semplici e spesso di base sono combinate con dettagli artigianali.



GLIMT  
SERIES



2019

2019



Ro  
ROOM DIVIDER



6

Accessories



# Accessories collection

## Priamo Studio Nove.3



code ACC.400.PR  
structure OB covering CPF73



code ACC.400.PR  
structure OL covering CPF27

## Route Studio Nove.3



code ACC.600.ROU structure NO  
covering CTT200 wheels RW trays PV



code ACC.600.ROU structure OL  
covering CTT281 wheels FR trays PV

## Ro Mia Cullin



code ACC.200.9.FS structure NO  
covering CTT226



code ACC.200.9 structure NO  
covering CTT281+CTT263



Musa bookcase code ACC.800.MUS covering CTT275 shelves VBR  
 Butterfly table code 40.0902 structure CTT200 top VEF  
 Zen chair code 10.0130 structure NO covering CTT200

## Accessories collection

Musa  
RedCreative



code ACC.800.MUS  
covering CTT281 shelves VET GLASS

Glimt  
Mia Cullin



code ACC.100.80  
structure BR covering CTT203



code ACC.100.60  
structure NO covering CTT200



code ACC.100.165  
structure GF covering CTT263



Musa  
bookcase



Musa bookcase code ACC.800.MUS covering CTT281 shelves VET GLASS

Musa  
bookcase



Musa bookcase code ACC.800.MUS covering CTT281 shelves VET GLASS



# Glimt

mirror



Glimt mirror code ACC.100.80 structure NO covering CTT200  
Glimt mirror code ACC.100.60 structure BR covering CTT203  
Couture chair code 10.0512 structure FG covering PFP46  
Lullaby side table code 40.0800 structure GF top ST MARBLE  
Duffy table lamp code ACC.300.DUF structure OS covering CTT210  
Tulip floor lamp code ACC.500.TUL structure OW covering CTT210

# Glimt

mirror



Glimt mirror code ACC.100.165 structure NO covering CTT200  
Glimt mirror code ACC.100.112 structure BO covering CTT210  
Glimt mirror code ACC.100.150 structure BR covering CTT203



Glimt  
mirror





## Ro room divider



Ro free standing room divider code ACC.200.9.FS structure NO covering CTT 226+NC  
Pasqualina relax armchair code 10.0089 covering CPF27  
Indian side table code 40.0900 structure BR covering CTT275 top/base NC  
Duffy table lamp code ACC.300.DUF structure OS covering CTT275



Ro room divider code ACC.200.9 structure NO covering CTT281+CTT263

Ro  
room divider



Ro free standing room divider code ACC.200.9.FS structure NO covering CTT226

Ro  
room divider





# Route

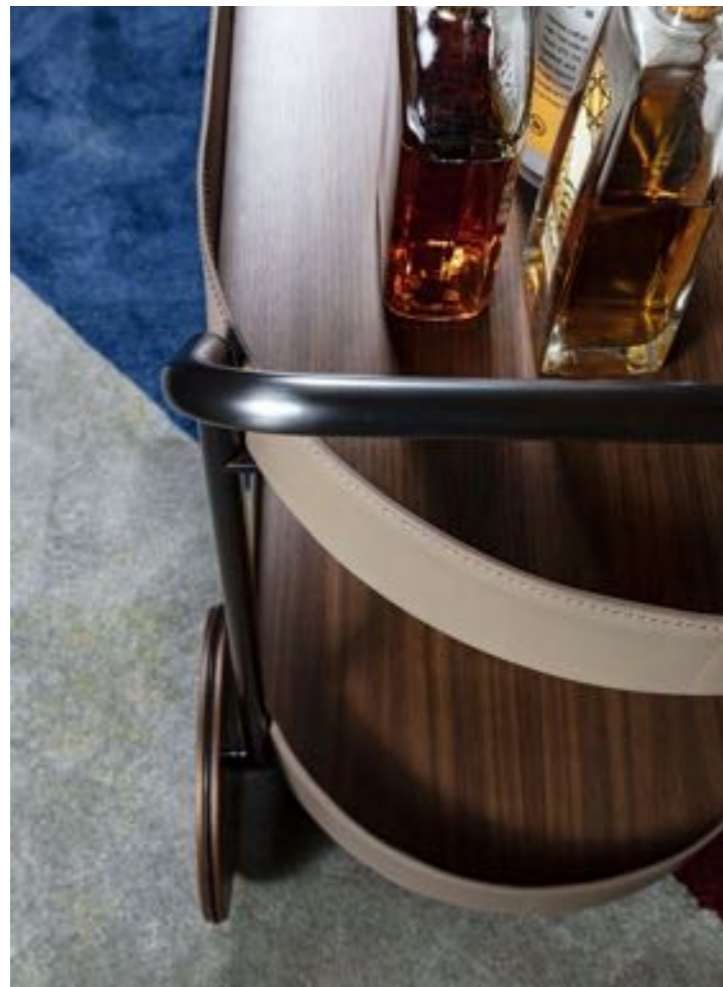
cart



Route cart code ACC.600.ROU structure OL covering CTT281 wheels FR trays PV

# Route

cart



Route cart code ACC.600.ROU structure BR covering CTT 275 wheels NC trays NC  
Pasqualina armchair code 10.0090 covering CTT203





Priamo  
swing



Priamo swing code ACC.400.PR structure OL covering CPF27





Priamo  
swing

Priamo swing code ACC.400.PR structure OB covering CPF73



Series index

Materials

# Living and office

Abaco series  
Franco Bizzozzero



Table  
pag.148



Desk / Meeting table  
pag.254 / pag.262

Amaranta series  
Giuliano Cappelletti



Swivel chair  
pag.222



Waiting area  
pag.232



Swivel stool  
pag.82

Bizzy series  
Franco Bizzozzero



Chair  
pag.38



Stool  
pag.62

Butterfly series  
Studio Nove.3



Table  
pag.134



Desk  
pag.246

Carlotta  
Giuliano Cappelletti



Chair  
pag.52

Crossover series  
RedCreative



Console  
pag.160



Table  
pag.140



Coffee table  
pag.176

Couture series  
Stefano Bigi



Chair  
pag.34



Chair outdoor  
pag.44



Stool  
pag.70



Swivel stool  
pag.78



Swivel chair  
pag.220



Waiting area  
pag.234

Daybed  
RedCreative



Relax armchair  
pag.104

Eva  
RedCreative



Swivel chair  
pag.224

Fagus  
Sergio Bianchi



Table  
pag.144

Frenchkiss series  
Stefano Bigi



Armchair  
pag.18



Stool  
pag.68



Swivel stool  
pag.80



Swivel chair  
pag.226

Fusion  
Daniele Lo Scalzo Moscheri



Desk  
pag.256

Gazzella series  
Tom Kelley



Chair  
pag.40



Armchair  
pag.26



Stool  
pag.60

Hipod&Lopod series  
Giulio Manzoni



Swivel chair  
pag.212



Swivel chair  
pag.214

Indian series  
Studio Nove.3



Coffee table  
pag.178

Isotta  
Studio Nove.3



Stool  
pag.64

Ledermann series  
Tom Kelley



Chair  
pag.42



Armchair  
pag.16



Stool  
pag.72

Lybra series  
RedCreative



Armchair  
pag.28



Swivel chair  
pag.210

# Living and office

## Lullaby series RedCreative



Relax armchair  
pag.110



Coffee table  
pag.190

## Mood series RedCreative



Relax armchair  
pag.120

## Pasqualina series Sergio Bianchi and RedCreative



Chair  
pag.50



Armchair  
pag.22/24



Stool  
pag.74



Sofa  
pag.96



Swivel chair  
pag.216

## Rendez-vous series Stefano Bigi



Bar table  
pag.196

## Raily Studio Nove.3



Writing desk  
pag.166

## Strato series Danilo Bianchi



Desk  
pag.252

## Sydney series RedCreative



Relax armchair  
pag.118



Sofa  
pag.88



Console  
pag.156



Coffee table  
pag.186

## Star series RedCreative



Table  
pag.150



Meeting table  
pag.268

## Trama RedCreative



Chair  
pag.48

## Valeo series Fauciglietti Engineering



Meeting table  
pag.264

## Verve Giulio Manzoni



Table  
pag.138

## Zen series Christian Werner



Chair  
pag.46



Armchair  
pag.14

## Web series Fauciglietti Engineering RedCreative



Swivel chair  
pag.228

# Lighting

## Bunch Stefano Santilio



Lamp  
pag.290

## Duffy Stefano Santilio



Lamp  
pag.276

## Tulip Stefano Santilio



Lamp  
pag.284

## Glimt series Mia Cullin



Mirror  
pag.304

## Musa RedCreative



Library  
pag.300

## Priamo Studio Nove.3



Swing  
pag.322

## Ro Mia Cullin



Room divider  
pag.310

## Route Studio Nove.3



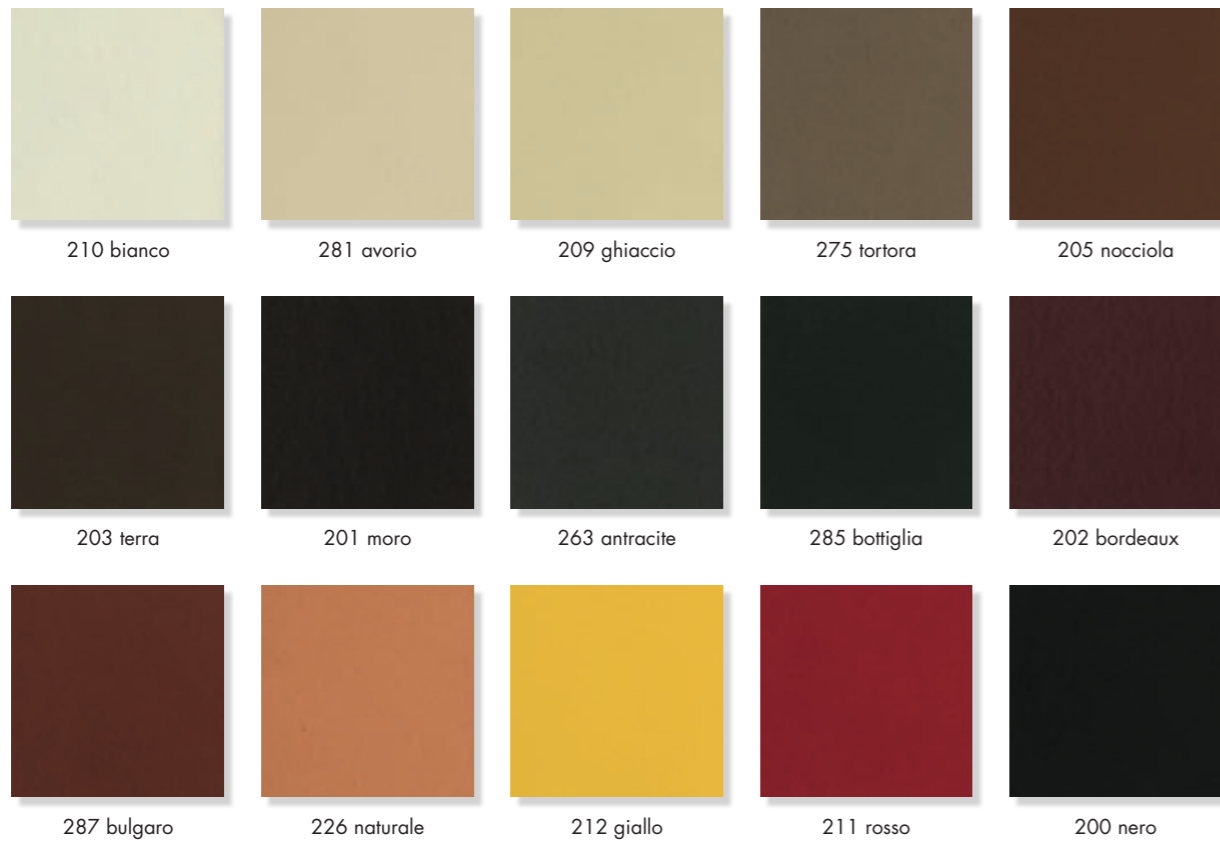
Cart  
pag.316

# Accessories

# PPF soft leather



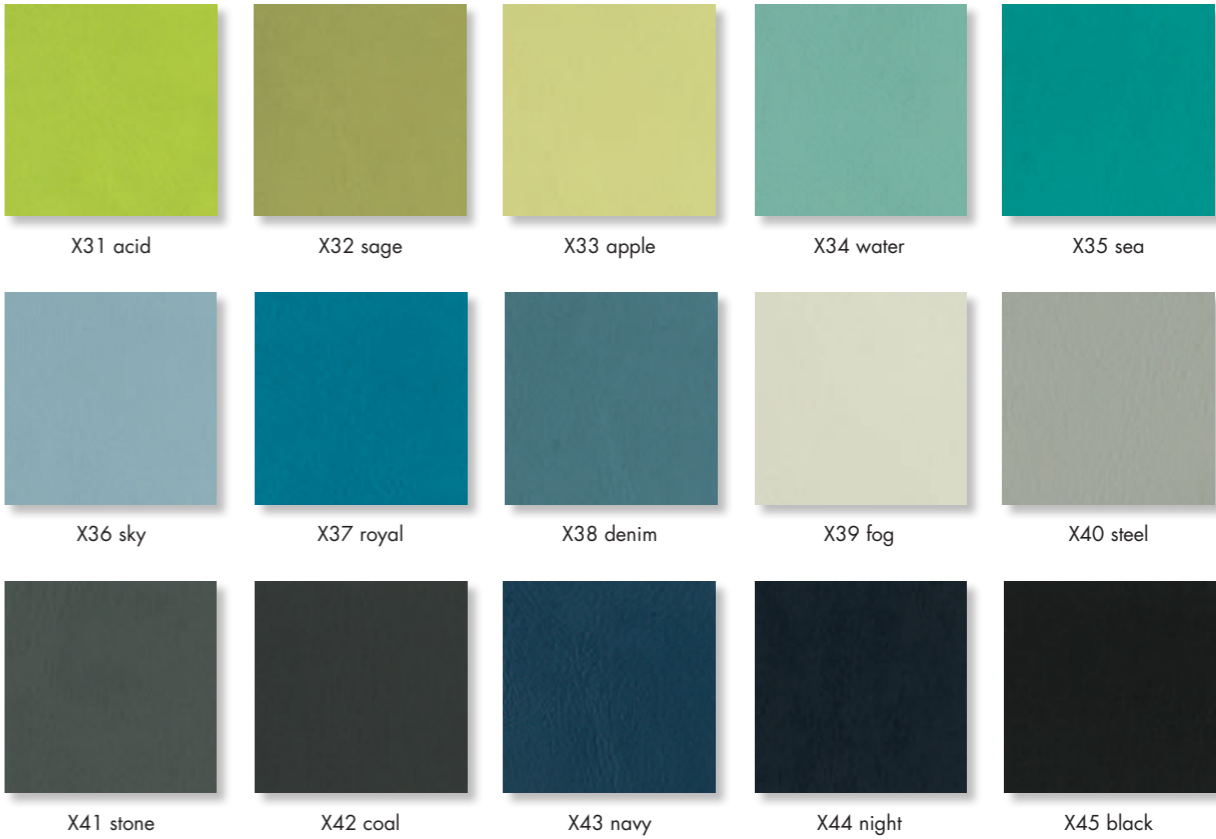
## CTT contract leather



## CPF full grain leather



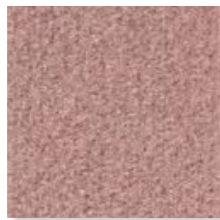
# FX faux leather



# Blazer felt



Dartmouth CUZ2Q



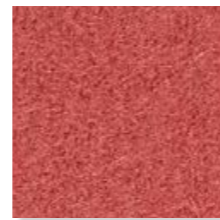
Stanford CUZ2R



Eynesbury CUZ2W



Fairfield CUZ47



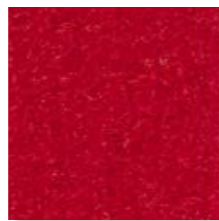
Barlborough CUZ3D



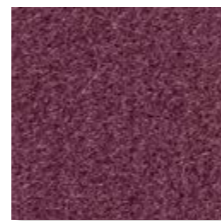
Wesley CUZ82



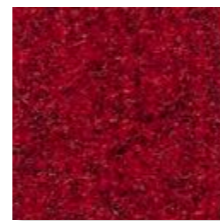
St Andrews CUZ86



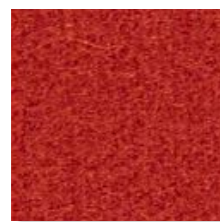
Oriol CUZ18



Barnard CUZ2S



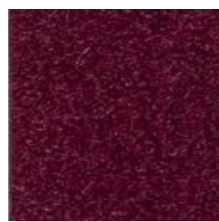
Handcross CUZ63



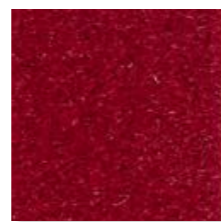
Goldsmith CUZ39



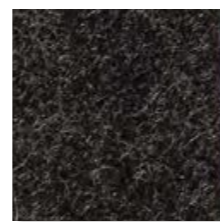
Trevelyan CUZ31



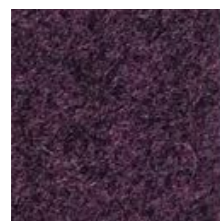
Magdalene CUZ21



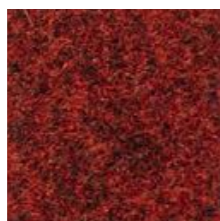
Wellington CUZ13



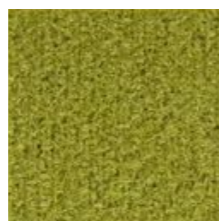
Kingsmead CUZ67



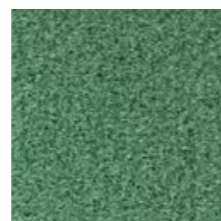
Holyoke CUZ2T



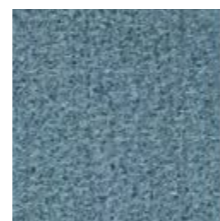
Edge Hill CUZ90



Penola CUZ2X



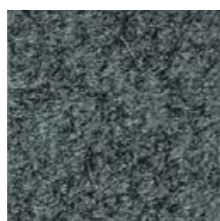
Tyndale CUZ2Y



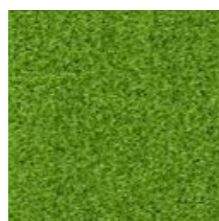
Woodcroft CUZ2Z



Dunhurst CUZ58



Latymer CUZ33



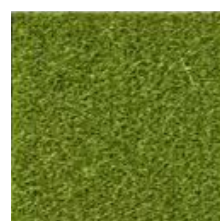
Newport CUZ1L



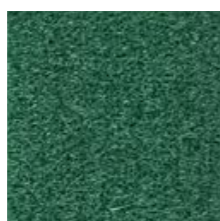
Aston CUZ02



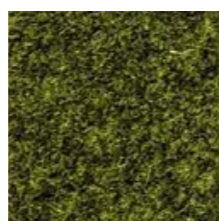
Ulster CUZ1F



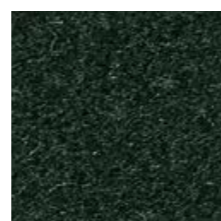
Bryanston CUZ53



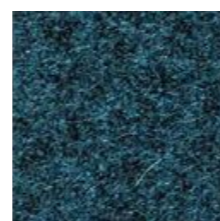
Montcrest CUZ3A



Camphill CUZ1K



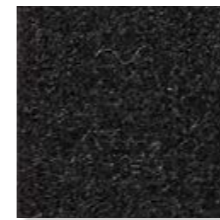
Cardiff CUZ1N



Abertay CUZ3B



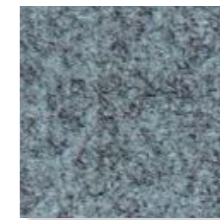
Glasgow CUZ1M



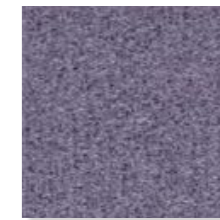
Winchester CUZ12



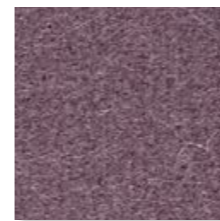
Hull CUZ1P



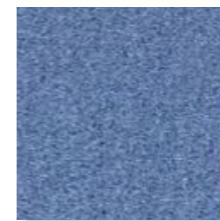
Plymouth CUZ1R



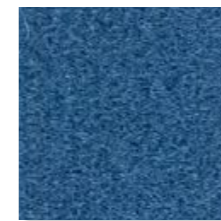
Sheffield CUZ1T



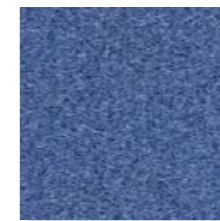
Scottsdale CUZ3E



Marymount CUZ3C



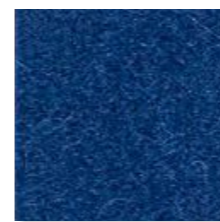
Vassar CUZ2U



Manchester CUZ1V



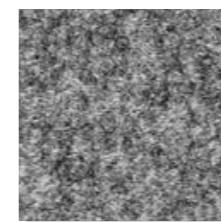
Silverdale CUZ28



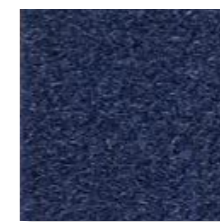
Knightsbridge CUZ26



Newcastle CUZ1W



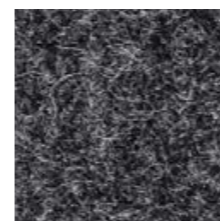
Surrey CUZ1E



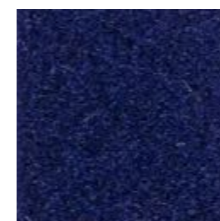
Edinburgh CUZ1Y



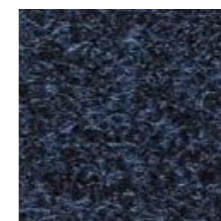
Aberlour CUZ1J



Silcoates CUZ30



Oxford CUZ09



Glenalmond CUZ62

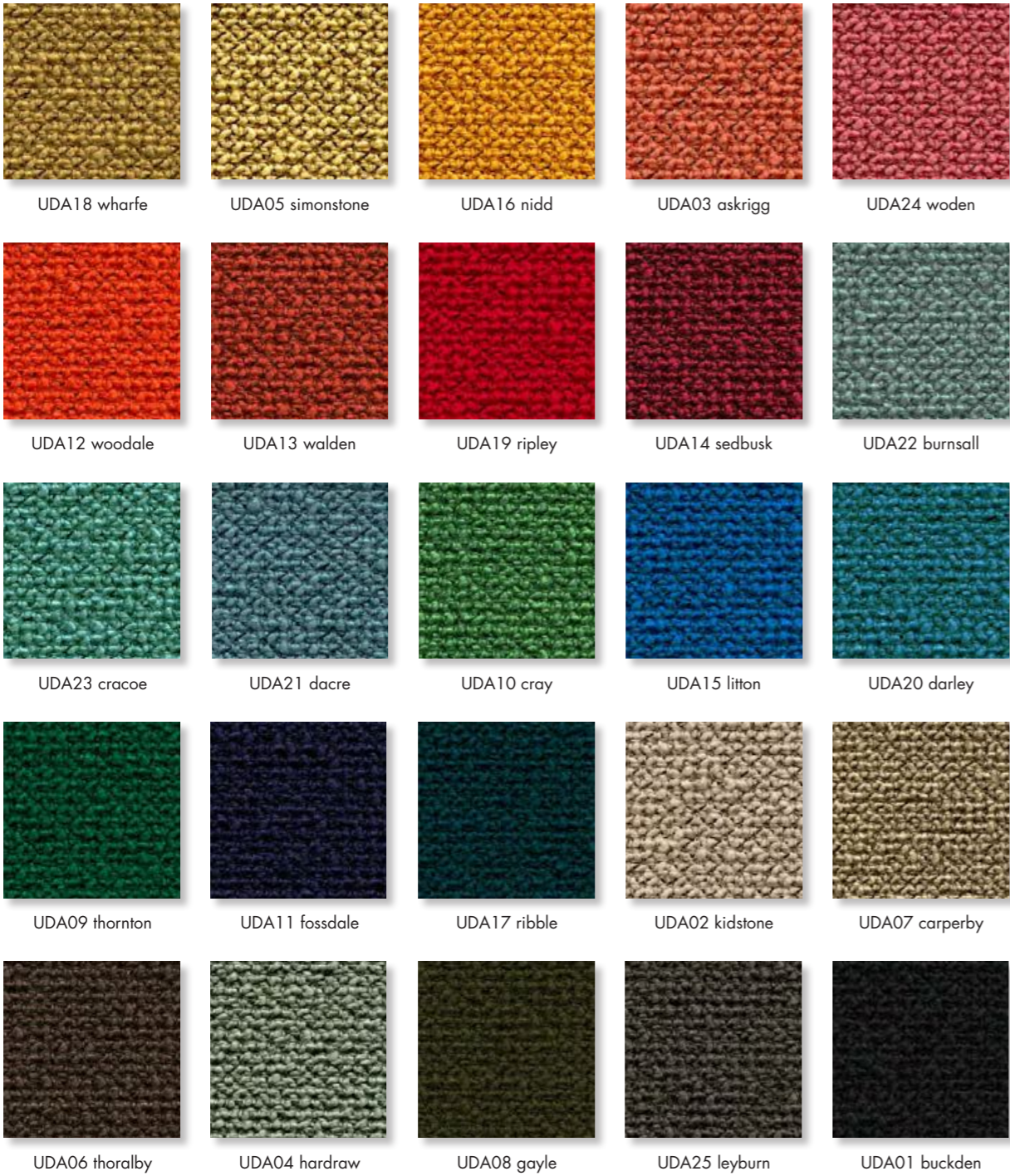


Bromsgrove CUZ35

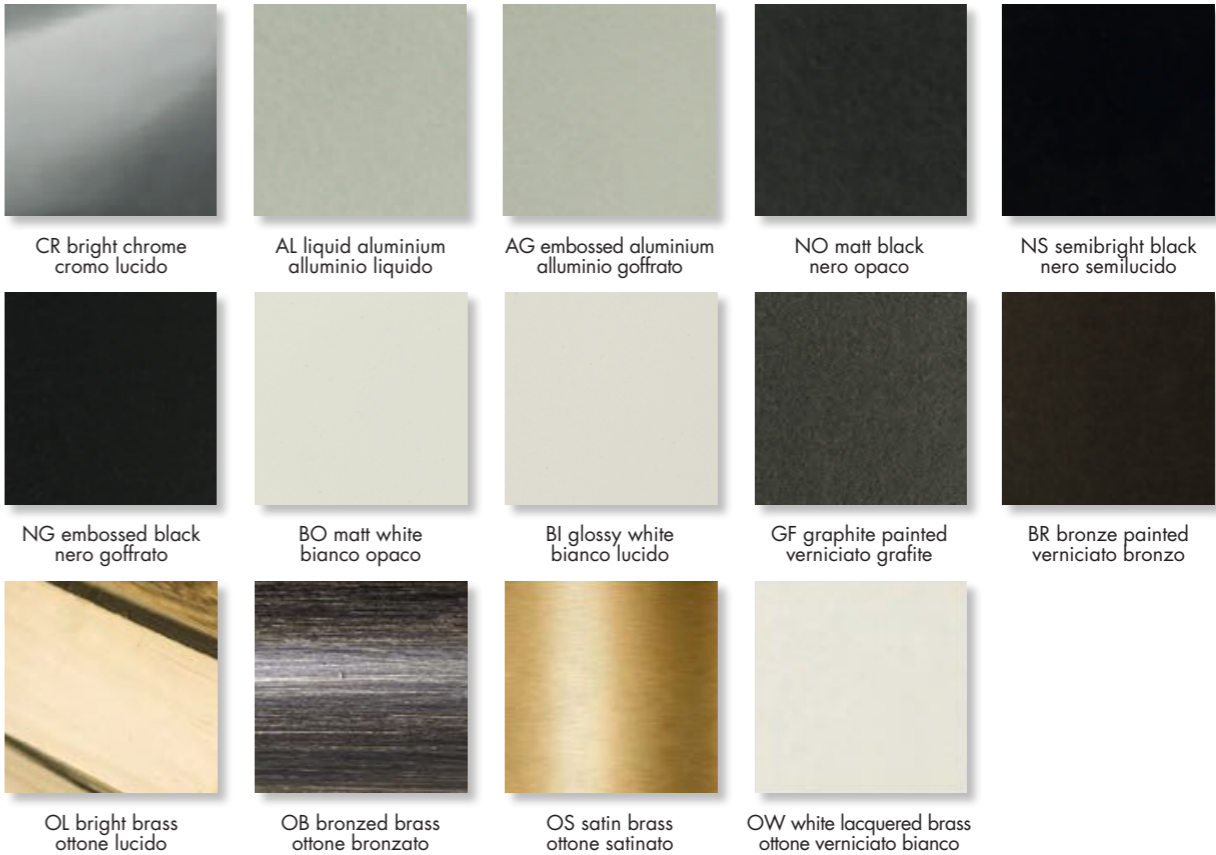


Napier CUZ08

# Yoredale fabric



# Metal finishes

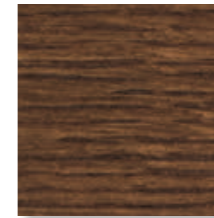




## Wood finishes



RS bleached oak  
rovere sbiancato



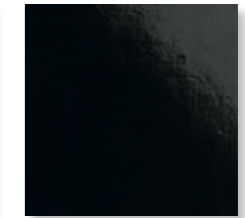
RN oak dyed walnut  
rovere tinto noce



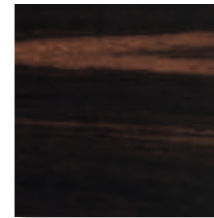
RW oak dyed wengé  
rovere tinto wengé



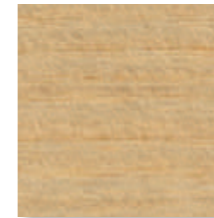
NC walnut Canaletto  
noce Canaletto



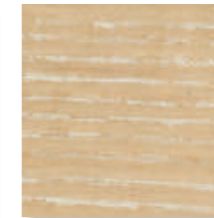
LAC glossy lacquered  
laccato lucido



EB ebony  
ebano



FR natural ash  
frassino naturale



FS bleached ash  
frassino sbiancato

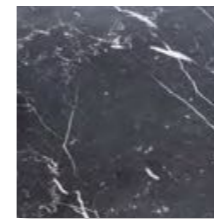


FG grey ash  
frassino grigio

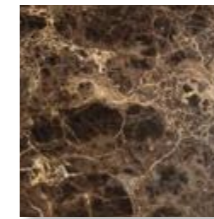
## Marble



BC MARBLE  
Bianco Carrara



NM MARBLE  
Nero Marquina



EM MARBLE  
Emperador



ST MARBLE  
Stardust

AD: **valentinicesarotti**associati

photo: Master Fotografie / Studio Eleven

print: Nava Press

© Enrico Pellizzoni, 2021

**ENRICO  
PELLIZZONI®**

ENRICO PELLIZZONI s.r.l.  
VIA COMO 49  
22066 MARIANO COMENSE (CO) ITALY  
T. +39 031746286  
F. +39 031746256  
info@enicopellizzoni.com  
enicopellizzoni.com

**PELLIZZONI  
USA, Inc.**

PELLIZZONI USA, Inc.  
200 LEXINGTON AVE, SUITE 1304  
NEW YORK, NY 10016  
T. 001 212 227 0584  
sales@pellizzoniusa.com

