

GHIDINI  
1961  
GHIDINI

2023  
new  
collection

GHIDINI 1961 INIZIANDO

# INDEX

<b>Abbracci</b> bed	010
<b>Frame</b> beds and cabinets	018
<b>Taranto</b> bed and cabinets	034
<b>Liù</b> chairs	046
<b>Fabbrica</b> chair	050
<b>Alfred and Hillary</b> stools	054
<b>Ottanta</b> coffee tables	058
<b>Arnold</b> side tables	064
<b>Helios</b> lamps	068
<b>Triple waves</b> rugs	072
<b>Connect</b> rugs	076
<b>Plumose</b> rugs	080
<b>Materials collection 2023</b>	083
<b>Technical specifications</b>	105

# THE COMPANY

Ghidini1961 of Villa Carcina, in the province of Brescia, belongs to Italy's manufacturing excellence, thanks to their unparalleled production skills.

A specialist in die casting brass, aluminum and steel, the company excels in combining advanced technologies with traditional craft skills. With these solid foundations, the creative team composed by international designers has been able to enhance the properties of metals by creating innovative, timeless products chiseled with all the care for every detail that is distinctive of Ghidini's fine craftsmanship.

In this catalogue, you will come across products destined to become iconic, to erase the boundary between art and design and to establish with the public a communion of intentions and views such as to translate into a loyal and lasting relationship, just like artistic artefacts. A demonstration of how the reliability and quality of a brand can become a warranty of an investment capable of acquiring value over time.



# THE CRAFT

The entire production cycle takes place in-house and is characterized by a meticulous attention to detail: from the idea to the end product, passing through the various processing stages – from pressure die casting to lost wax and gravity casting, from machining to drilling, from satin-finishing to sand-blasting and polishing. These are the solid foundations of Ghidini1961.

With over 60 years of history behind it, and an entrepreneurial wisdom that has been handed down from father to son, Ghidini1961 presents furnishings, lamps and home accessories that are true testimonies of great Italian craftsmanship combined with state-of-the-art production technologies, care for materials, aesthetics and attention to detail.

With this foundation, our products are not just meant to decorate a refined environment, but they represent something valuable, to be cared of, that can be passed over through generations thanks to its intrinsic and long-lasting value blended with iconic and timeless design.

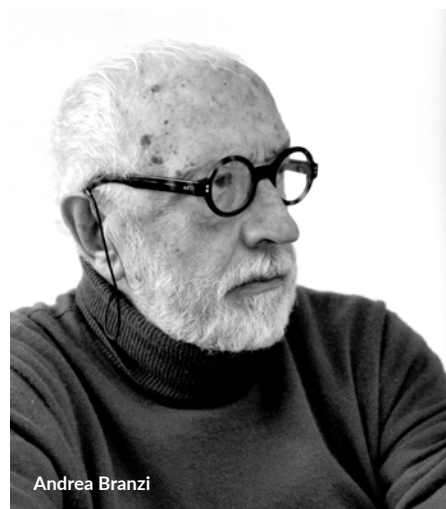


# THE PRODUCTS

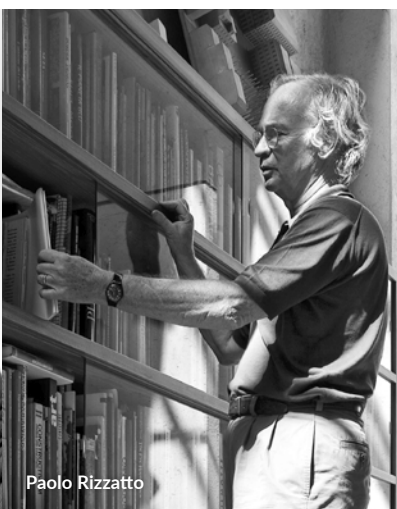
The collection includes works of art, where metal acquires an almost sculptural power, upholstered furniture, dining tables, beds, cabinets and finely chiseled home accessories, bearing witness to Ghidini's obsession for details.

The series embrace almost all articles for use at home, which are interpreted in an unusual and joyful way: from comfy and versatile sectional sofas, to very seductive, almost sculptural upholstered design statements, such as the Abbracci sofa, conceived by Lorenza Bozzoli or Stefano Giovannoni's Frame collection, where geometric shapes are softened by the velvety surface of metal to create a sleek collection of sofas, armchairs, dining tables, cabinets, bookshelves and beds. Casted metal elements have given life also to a series of other iconic products, such as the Shaker sofa and table, with the casted wheel that defines the language, to the brass and leather buckle of the Leisure sofa and armchair.

In its rich variety, the collection is a selection of the most significant contemporary creative expressions, interpreted and enhanced by Ghidini's skillful expertise and ability to interpret metal in all its possible forms.



Andrea Branzi



Paolo Rizzatto



Stefano Giovannoni



Lorenza Bozzoli



Alessandro Mendini



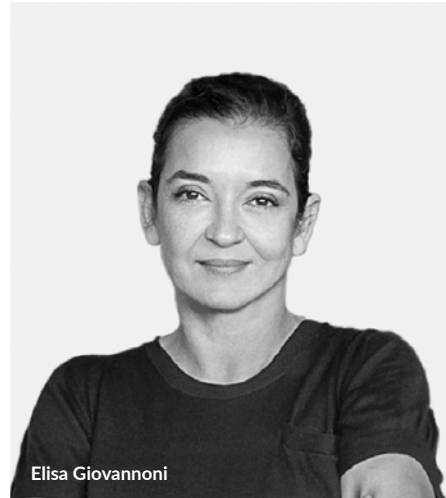
Aldo Cibic



Richard Hutten



Campana Brothers



Elisa Giovannoni



Johanna Grawunder



Branch Creative



Tomek Rygalik



Noé Duchaufour-Lawrance



Setsu&Shinobu Ito



Tomek Rygalik



Studio Job



Nika Zupanc

# THE DESIGNERS

The brand has put together a diversified creative team able to enhance the properties of metals, in a constant dialogue with precious leathers, fabrics, marbles and woods. By combining these valuable materials the team has developed a remarkable collection of items, furniture and accessories for daily use. All these products are characterized by innovative design and high quality manufacturing, creating an exclusive mood coherent with the nature and the best tradition of Ghidini1961.

The collection has been designed by renowned international firms such as Aldo Cibic, Alessandro Mendini, Andrea Branzi, Branch Creative, Fernando and Humberto Campana, Noé Duchaufour-Lawrance, Setsu & Shinobu Ito, Johanna Grawunder, Richard Hutten, Elisa Giovannoni, Stefano Giovannoni, Paolo Rizzatto, Tomek Rygalik, Studio Job and Nika Zupanc. The collection ranges from large furniture statements to tiny golden accents that decorate and give warmth to stylish residential environments.

Lorenza Bozzoli

# Abbracci

A hug conveys love and friendship, encapsulating a thousand words with elegance and simplicity while sparking the serotonin of happiness and relaxation.









The Abbracci (hug in Italian) can be selected with soft fabrics or natural leathers. The design language of this bed is a constant dialogue of gentle yet welcoming shapes and movements, that sublimates in the rising of the headrest, that smoothly encapsulates the bed main body.



Stefano Giovannoni

# Frame

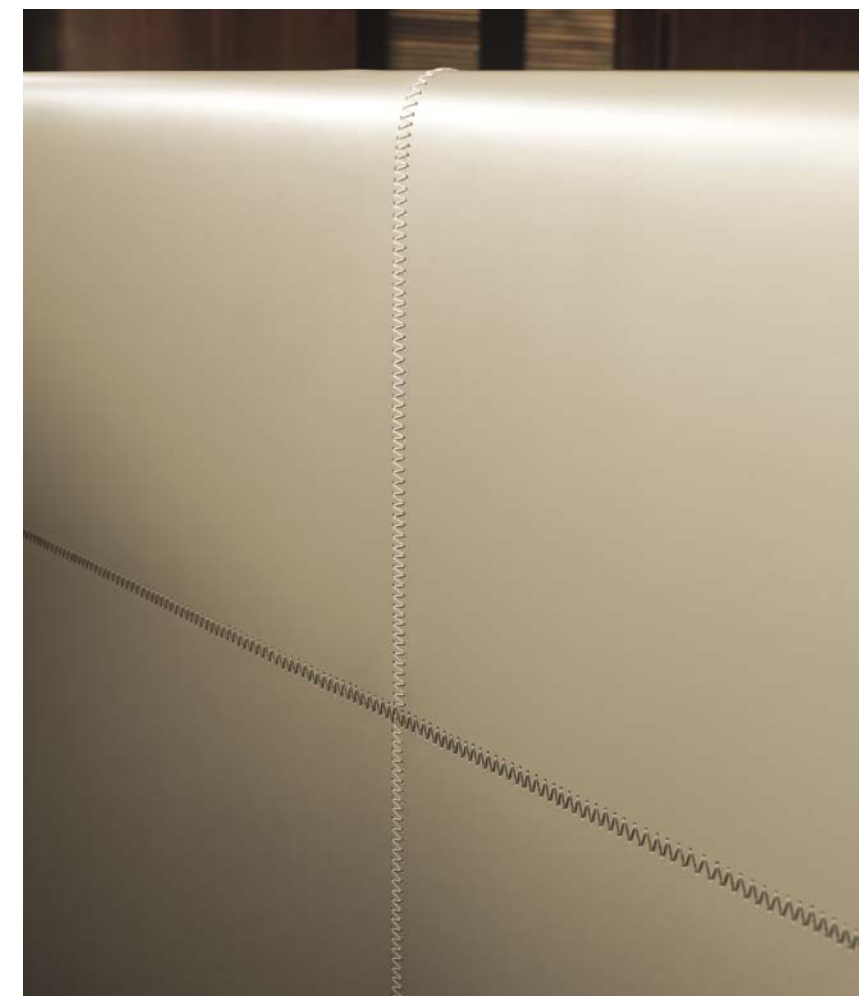
Everything starts from a simple element: "the joint", which, combined with elegant rounded 45 degrees extrusions, creates an almost infinite family.

The collection is characterized by organic junctions that, in their possible combinations, create minimal, compact and powerful structures.





The four-poster structure of the Frame bed, in aluminum and casted joints, dialogues with the pure hand-stitched Italian saddle leather of the headrest and bed sides, providing a very strong image.



The footboard and bed frame boards are made of pure hand-stitched Italian saddle leather, just like the headboard, which features a generous resting surface.



The Frame bedside table echoes the style and materials of the Frame bed. It is available in one size - 70x40 cm H43 with two very practical front drawers. In this case a simple structure based on the Frame extruded aluminum profile and casted joints sustains a pure wooden monolith.





With their naturally elegant posture, the Frame bedside tables and chest of drawers bring a powerful and refined aesthetic into the bedroom. A minimal style characterizes the bedside tables, which are raised from the floor by the aluminum structure with casted joints.



The chest of drawer is characterized by a minimal figure, with generous front drawers and a cohesive style that completes the night collection.







The footboard and bed sides of the Frame bed are in casted aluminum and saddle leather, emphasizing the handmade process needed to manufacture the bed.



Lorenza Bozzoli

# Tarantino

Soft and welcoming, this bed is inspired by the 70's; a decade that changed our culture forever through freedom and self- discovery.

The bed invites you to a world of fantasy where you can indulge in the comfort and coziness of your passions.

Tarantino, as if following a skillful plot, proposes itself with a soft goose down cushions covered with textured cotton corduroy proposed in colors inspired by the 70's.









The headboard of the Tarantino bed is made from a lavish structure of soft goose down cushions upholstered in noble fabrics or natural leathers. The base is composed of four casted aluminum feet, that can be configured with the extensive range of metal finishes available. The Tarantino bed can be complemented with the Tarantino bedside table and chest of drawers in natural oak.

The Tarantino chest of drawers and bedside table feature curved and delicate lines that reference those of the bed, which they complement naturally. The Chest is a bed cabinet in oak with large front drawers and curved side doors. The cylindrical elements in aluminum perform the function of handles and supporting feet.





Perfect ovals formed through impeccable craftsmanship, these bedside tables feature a main body in oak with side shelving, and a casted aluminum structure that works both as handle and as supporting foot.

Paolo Rizzato

# Liù

The materiality of the metal alloy flows sinuously into the mold giving life to the idea of a rectangular section with slightly rounded sides and edges which, moving freely in space, re-proposes itself on an increased scale up to design a discreetly curved seat and back (but generously padded!) and ends aiming decisively to the ground with four definitively straight legs.





Branch Creative

# Fabbrica

Branch's second chair design for Ghidini, is a study in simplification of both form and construction. Drawing on the iconic lines of the classic chair silhouette, Fabbrica's frame is constructed of a single casting repeated on two sides. Rather than utilizing aluminum extrusions which require welding and complicated finishing, Fabbrica celebrates the simple I-beam section, giving the chair structure with minimal weight.





Echoing the simplicity of the frame, a single seat surface in both leather and fabric is attached at three points allowing the thin silhouette to suspend and flex to the user's position.

Richard Hutten

# Alfred and Hillary

Feel like a movie star with these barstools named after famous butlers. You can have a seat in Hillary, named after the butler of Lara Croft in Tomb Raider, or in Alfred, named after the butler in Batman. Both barstools make you feel as glamorous as a Hollywood star.

With luxurious details in chromed aluminum and rich fabrics and leathers the design combines classic with contemporary, highlighting the company craftsmanship tradition.

Both stools can be configured with the supporting element in chromed aluminum or upholstered tone on tone with the seat.





Lorenza Bozzoli

# Ottanta

Large coffee tables made of marble or natural oak. The legs placed at the corners of the table top are positioned at 45° with an aesthetic inspired by the 80's of the last century.







Paolo Rizzato

# Arnold

Three geometric shapes (a Line, a Plan, a Volume) and three materials (Metal, Wood, Marble) exploiting the artifice and techniques of “tapering” take the form of: a solid tapered column (in two heights) completed with connections at the base and at the head providing a comfortable support surface characterized by a thin rounded edge and a stable truncated cone base.

The several combinations of the three geometries and the three materials are enriched by some dimensional variations and, with the study and fine-tuning of their overall proportions, take their definitive and complete form where the elegant brass column, which draws and solves the connection and attachment between the top and the base, becomes the distinctive element of the project without taking over the other elements that take part in the compositional game.





This minimal yet sleek side table plays with the interaction of metal with marble and wood. Again, this table can be configured with the Ghidini1961's extensive range of metal finishes, woods and marble, allowing an almost endless combination of tones and nuances.



Branch Creative

# Helios

Supported on a simple stand and base, Helios balances a conic glass shade on top of a small glowing sphere. Magically suspended above the Sphere, this semi-translucent shade can be angled and pivoted in any direction allowing a range the versatility - from focused light for reading to a more diffused ambient effect for the gathering of groups.





The lean and minimal main body of the Helios table lamp is embellished by the conic diffuser in blown glass, which emphasizes and digs into the craftsmanship of the brand. The diffuser is tilting, thus making this lamp very practical for reading and providing a smart look.

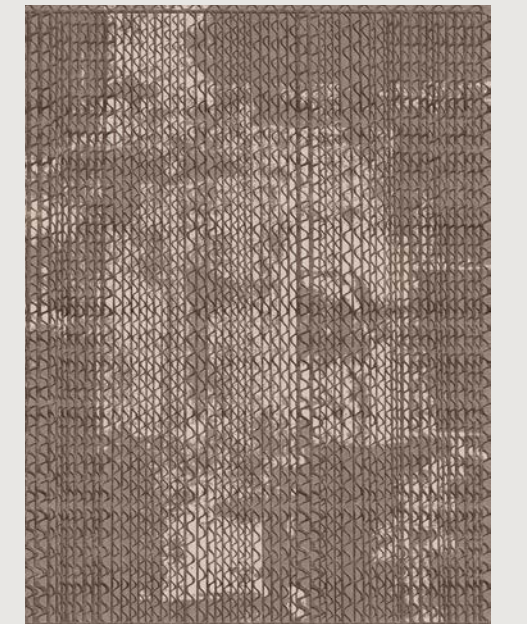
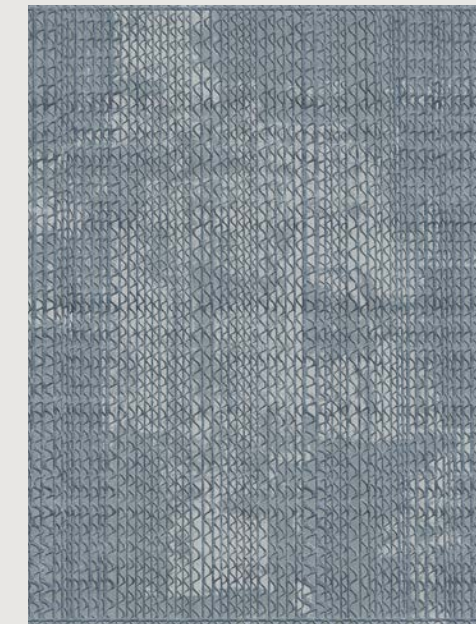
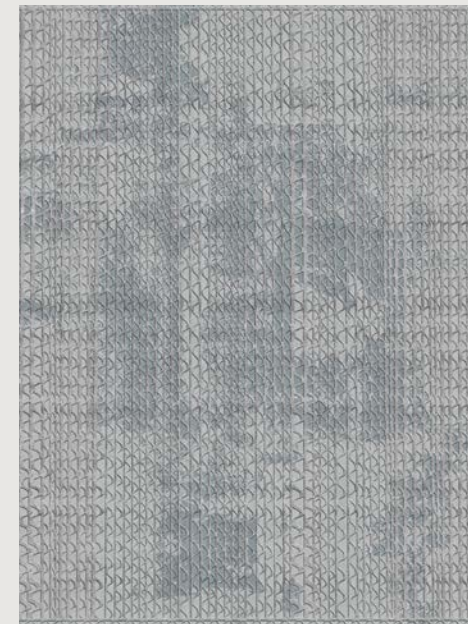
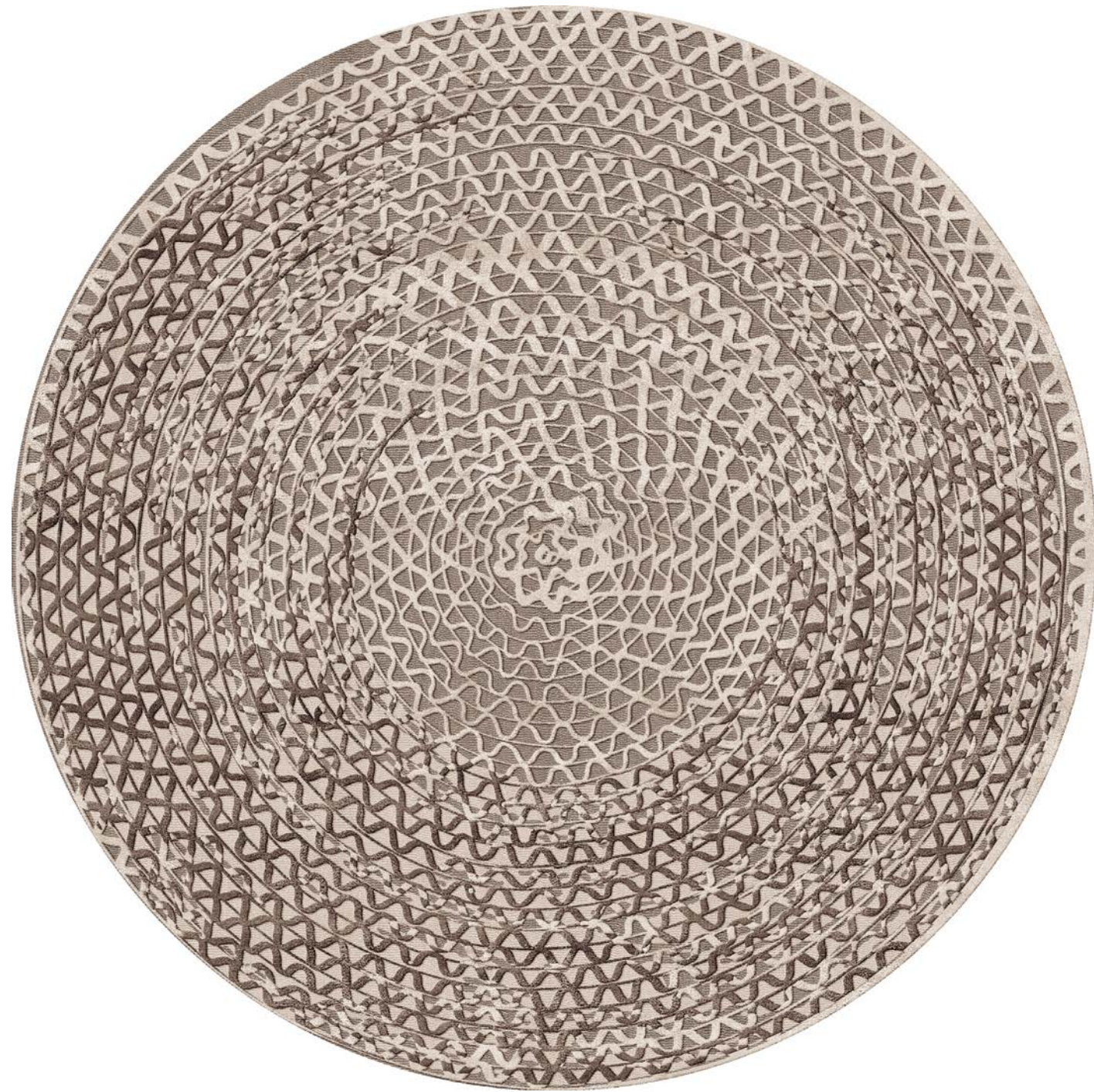
Lorenza Bozzoli

# Triple Waves

Inspired by the experimentation of Arte Povera art of the seventies that used unusual materials such as corrugated cardboard, this family of rugs are available in shades of beige, gray and blue.

The important dimensions in which they are proposed can be customized on customer request.





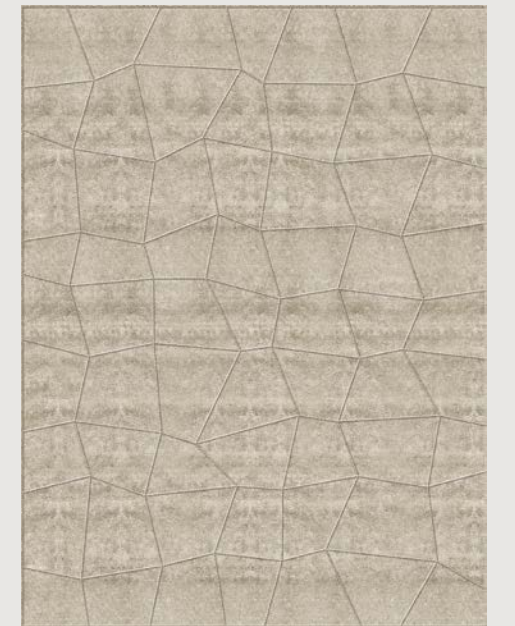
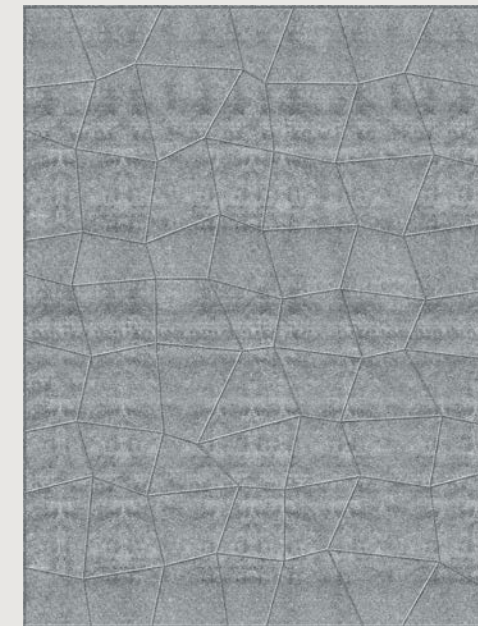
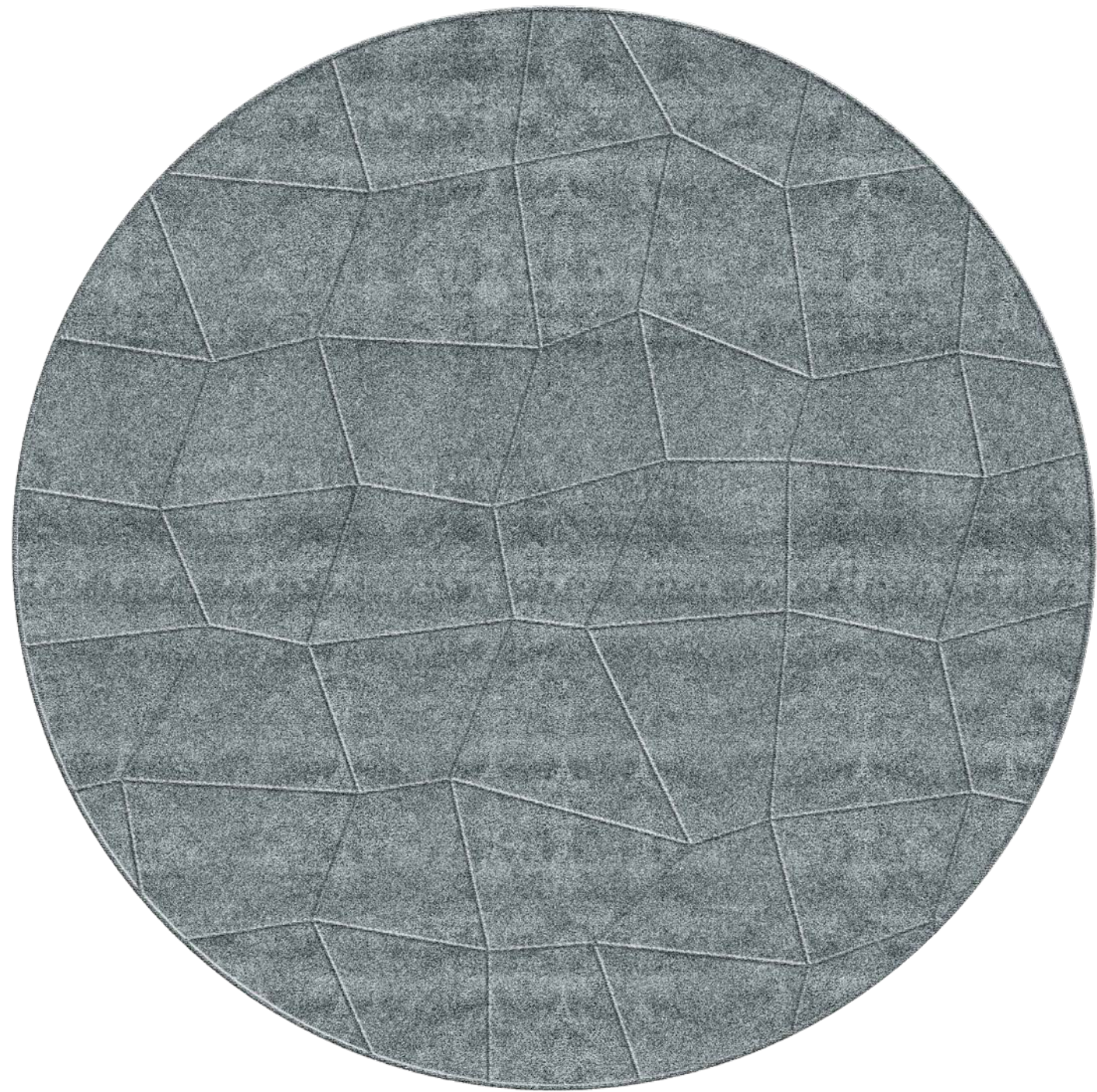
Richard Hutten

# Connect

Made of natural materials in different textures, the Connect rugs bring warmth to any room.

The rich monochrome color palette in a variety of shades will be the center of your space.





Richard Hutten

# Plumose

Plumose is a super soft and warm rug. Its smooth, furry long yarns makes you want to lay on it forever. With a sophisticated color palette it makes every space looks elegant.



MATERIALS  
COLLECTION  
2023

# METAL FINISHES

All our finishes are handmade, and all surfaces are lacquered to provide a long lasting durability



Polished brass PB



Chrome CH



Satin Platinum SP



Orbital Bronze OB



Satin brass SB



Light burnished brass LB



Satin Titanium ST



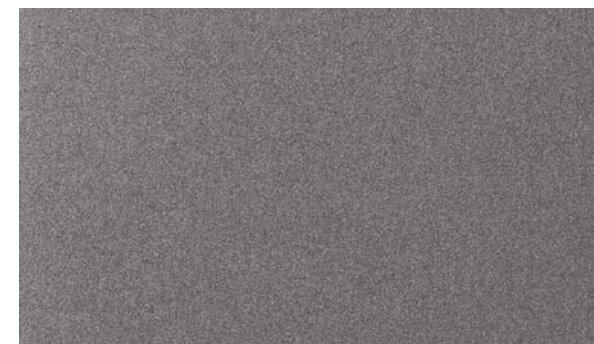
Brushed Copper BC



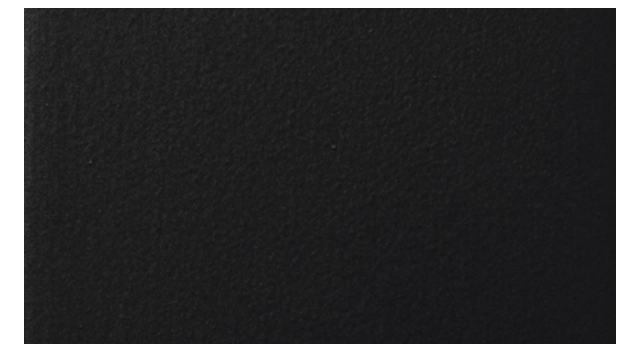
Dark burnished brass DB



Black Gold BG



Deep Anthracite DA



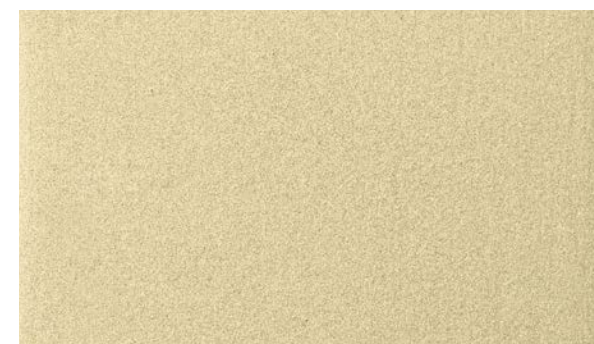
Deep Dark DD



Brown burnished brass BB



Brushed Silver BS



Deep Gold DG



Deep Silver DS

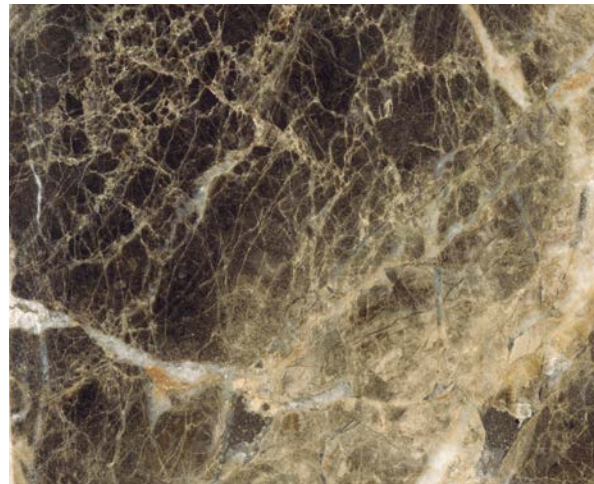
# MARBLE COLLECTION



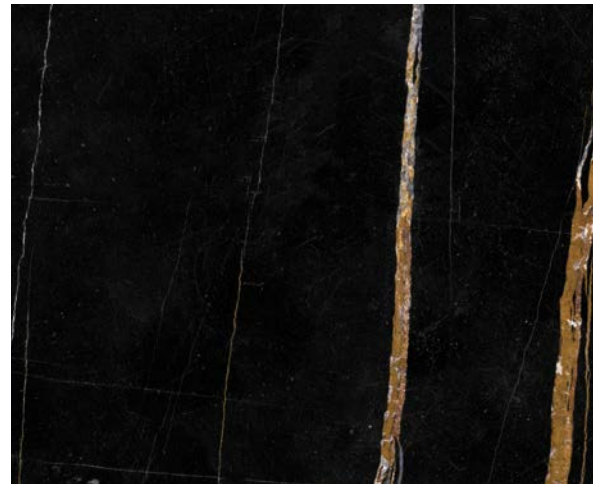
Calacatta Gold CG



Carrara White CW



Emperador Dark ED



Sahara Noir SN



Verde Alpi VA



Travertino TV

# WOODS COLLECTION



Natural Oak



Bolivar



Canaletto Walnut



Mahogany



New Lime



Caleido

# CLUNIS



002

**Category**

Bouclé

**Composition**

33%WO-25%PL-25%PC-15%CO-2%PA  
 Width: 137 cm+/- 3%  
 Weight: 4935 gr/ml - 682 gr/sqm +/- 5%  
 Martindale: 40000 cycles+/-

**Flame resistance**

BS 5852-1 (1979) CIGARETTE  
 BS 5852:2006 CIGARETTE  
 BS 5852-1 (1979) MATCH  
 BS 5852:2006 MATCH  
 CAL TB 117:2013

**Washing Instructions**



002



006



028



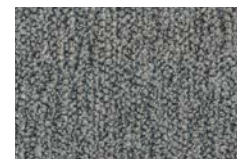
026



000



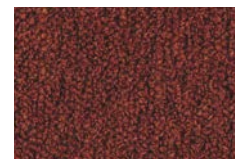
029



030



020



025

# SOFI



187-101

**Category**

Cotton and viscose frisé

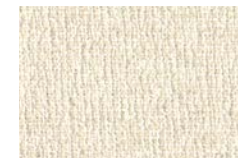
**Composition**

46%CO-47%VI-7%LI  
 Width: 850 gr/ml - 607 gr/sqm +/- 5%  
 Weight: 850 gr/ml - 607 gr/sqm +/- 5%  
 Martindale: 27000 cycles +/- 10%

**Flame resistance**

BS 5852:2006 CIGARETTE  
 BS 5852-1 (1979) MATCH  
 BS 5852:2006 MATCH

**Washing Instructions**



187-101



187-000



187-100



187-029

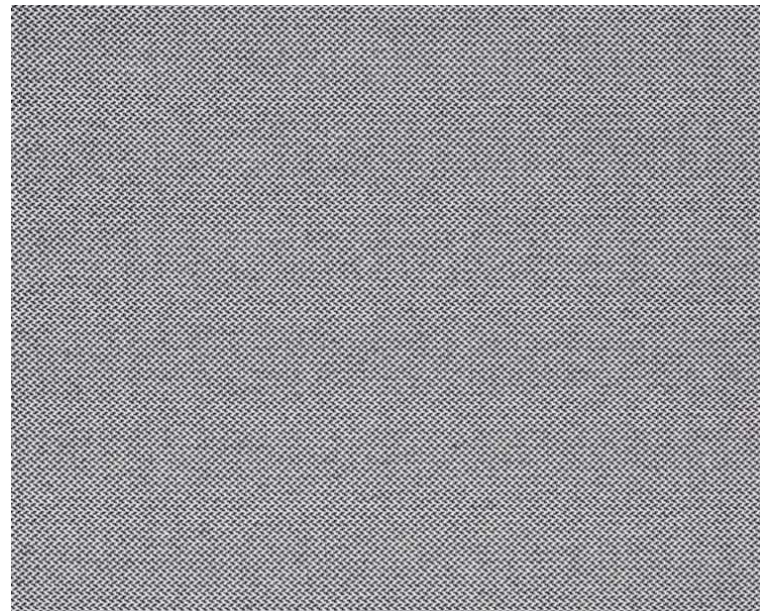


187-090



187-062

# REVIVE



0154

**Category**

Kvadrat upholstery

**Composition**

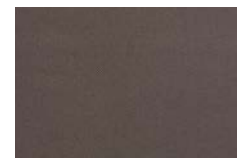
100% recycled polyester FR  
 Width: Approx. 140 cm (Approx. 55")  
 Weight: 420 g/lin. m (13.55 oz/ly)  
 Martindale: 60.000  
 Sustainability: Greenguard Gold, HPD, EPD

**Flame resistance**

BS 5852 Crib 5 with treatment, EN 1021-1/2,  
 DIN 4102 B1, IMO FTP Code 2010: Part 8, NF D  
 60 013 with treatment, Önorm B1/Q1, UNI 9175  
 1IM, US Cal. Bull. 117-2013



0154



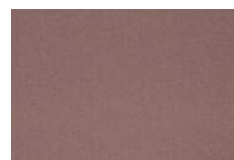
0274



0324



0434



0454

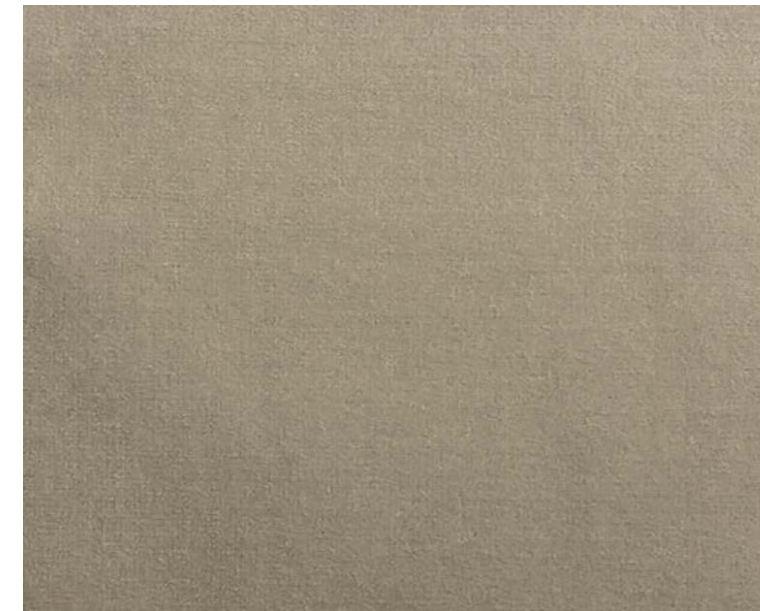


0944



0974

# ADAMO & EVA



129 - roccia

**Category**

Cotton Velvet

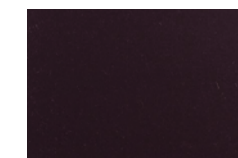
**Composition**

100%CO  
 Weight: g/ml 630  
 Width: cm 140 - 55.12 inches  
 Cfa: Yes  
 Martindale: 50.000

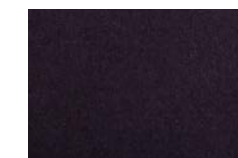
**Washing Instructions**



116 - cayenne



119 - prugna



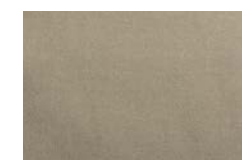
106 - mirtillo



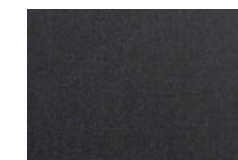
168 - mousse



145 - olive



129 - roccia



107 - antracite



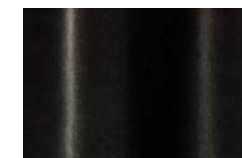
169 - cactus



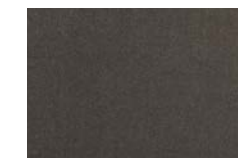
104 - indigo



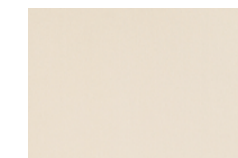
170 - notte



175 - fumo



137 - cenere



178 - ostrica

An exquisite quality of Italian-made cotton velvet that is soft, versatile and hard-wearing. A palette of 13 colours comprising striking, traditional and neutral shades.

# TABULARASA

Only for Love chair



161 - malachite

**Category**  
Cotton Satin

**Composition**  
100%CO  
Weight: g/ml 469  
Width: cm 140 - 55.12 inches  
Cfa: Yes  
Martindale: 30.000

**Washing Instructions**



103 - ninfea



161 - malachite



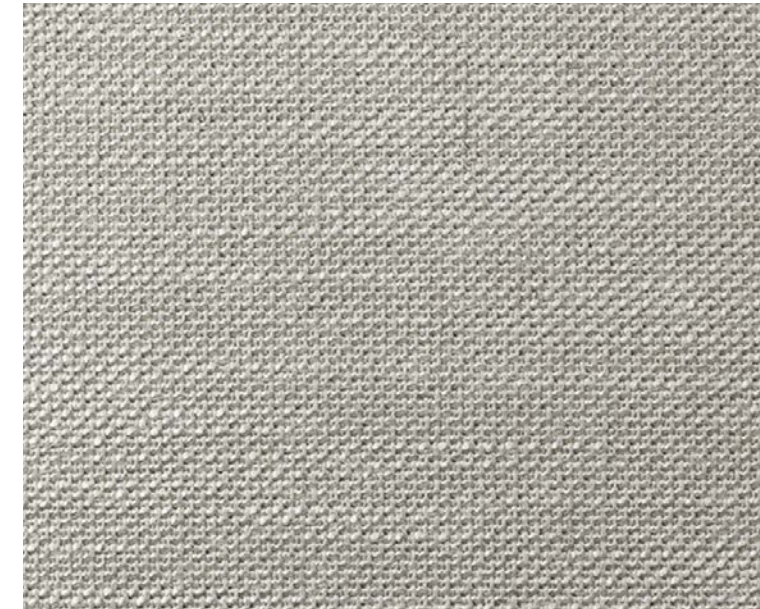
156 - ottanio



rose - 173

An elegantly modern cotton satin whose sheen enhances an extraordinary colour palette. Versatile and hardwearing, it provides the basis for infinite possibilities of fabric coordination, also using the Babà trimmings collection.

# BOGARDINE

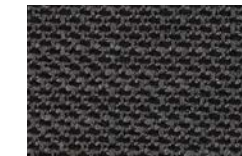


003 - perla

**Category**  
Jacquard

**Composition**  
31%CV 26%CO 24%PAN 10%LI 8%WO 1%PA  
Weight: g/ml 960  
Width: cm 140 - 55.12 inches  
Curtain, Upholstery For Medium/Hard Use  
Cfa: Yes  
Martindale: 40.000

**Washing Instructions**



001 - quasinerio



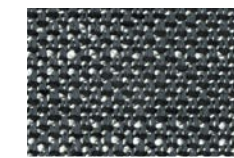
002 - taupe



003 - perla



004 - naturale



008 - ottanio



009 - bianco

Yarns of different types and thicknesses create a textural weave and confer a slight matelassé effect to the surface. Soft and consistent to the hand, hardwearing and ideal for heavy duty seating.

# SINEQUANON



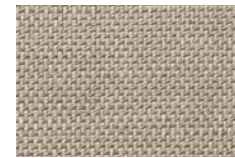
01 - argento



01 - argento



02 - taupe



05 - stone



07 - perla



37 - caffè arabica

## Category

Linen and Viscose fabric

## Composition

60%CV 16%LI 13%CO 6%PES 5%PAN

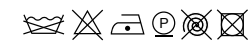
Weight: g/ml 663

Width: cm 140 - 55.12 inches

Cfa: Yes

Martindale: 35.000

## Washing Instructions



# CLAY



0010



002



004



005



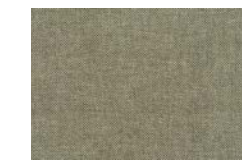
009



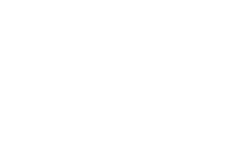
0010



0013



0015



0015

## Category

Upholstery

## Composition

76% Linen, 21% Cotton, 3% Polyester

Pattern: Solid

Weight: 770 g/lin.m

Width: 140 cm

Durability: 45.000 Martindale

Pilling: 4

Lightfastness: 5

## Washing Instructions



Panama weave with slightly shot yarns. Even here the Dedar offer extends with the linen and viscose cloth, which is durable, bright, boasts a rich texture (Flair, Fifty Fifty, Chambray, Aut Aut, Arbus). A special, careful blend of linen and viscose and a new construction which enables a reduction of the textile weight whilst guaranteeing the aesthetic quality, usage and durability, and also offering good value. This textile, just like the others in this range, feature a waterrepellent treatment which offers specific protection from liquids and oils.

Bringing together both natural beauty and a sense of finesse, the creative team have mixed colours of yarn in warp and weft to create an elegant yet casual fabric. The result has a unique structured surface that adds an extra dimension to any interior design scheme. With a back cloth that gives extra stability, Clay is perfect for upholstering furniture. The colours are inspired by the designer's love of both art and interiors and include cool shades of cement, blue, and salvia but also the natural shades of wood and clay.

# TWILLTWENTY



4 - cipria

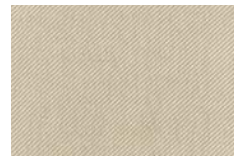
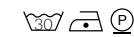
### Category

Twill

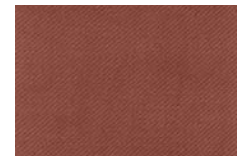
### Composition

100%PI Flame Retardant  
 Width: 140 Cm  
 Weight: 630 Gr  
 Made in: Italy  
 Martindale: 80000  
 Pilling: 4/5 (Scale 1-5)  
 Colour Fastness To Light: 7 (Scale 1-8)  
 Colour Fastness To Crocking: 4/5 Dry 4/5 Wet (Scale 1-5)  
 Colour Fastness To Chlorinated Water: 4/5 (Scale 1-5)  
 Colour Fastness To Sea Water: 4/5 (Scale 1-5)  
 Tensile Strength: Class A (En 14465)  
 Tear Strength: Class A (En 14465)  
 Seam Slippage: Class A (En 14465)  
 Other Certifications: Yarns Certified Oeko-Tex  
 Fire Certifications: France M1 Nfp902-503-504-505, Germany B1 Din 4102-1, Imo 8 Upholstery, Italia Classe 1 Tendaggi, Uk Cigarette Source 0, Uk Contract Curtains Bs5867, Uk Contract Upholstery Bs7176, U.s.a. Cal Tb117

### Washing Instructions



4 - cipria



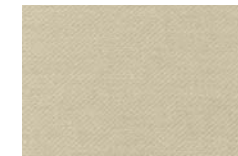
20 - ruggine



7 - nero



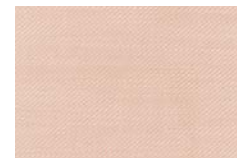
6 - grigio



3 - corda



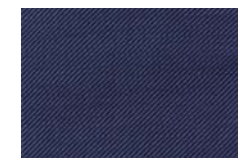
1 - bianco



9 - pesca



12 - pervinca



17 - blue



19 - bordeaux



13 - acqua



16 - teal blue

A classic twill. A particularly thick thread/yarn highlights the "Z" diagonal motif which makes the fabric more dynamic. The shiny and matt threads enhance the effect of the light on the surface.

# SAFIRE



003

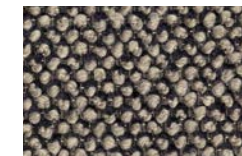
### Category

Boucle and chenille

### Composition

43% Viscose, 17% Acrylic, 15% New wool, 9% Cotton, 8% Linen, 8% Polyester  
 Weight: 1010 g/lin.m  
 Width: 140 cm  
 Durability: 44 000 Martindale  
 Pilling: 3  
 Lightfastness: 6  
 Sustainability: Greenguard Certification

### Washing Instructions



003



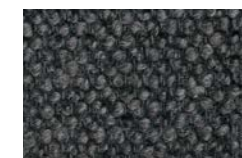
004



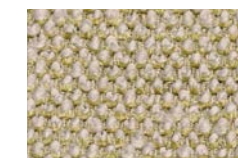
005



008



010



015



017

# CORD



CA1419/053

**Category**

Cotton Velvet

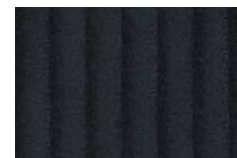
**Composition**

100% cotton, groundmaterial: 100% cotton  
Width: 140 cm  
Durability: 100 000 Martindale

**Washing Instructions**



CA1419/053



CA1419/084



CA1419/070



CA1419/071



CA1419/091



CA1419/020



CA1419/032



CA1419/064



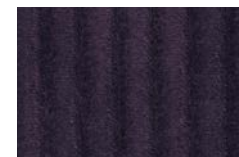
CA1419/051



CA1419/037



CA1419/093



CA1419/081

# BONSAI



020

**Category**

Upholstery

**Composition**

48% PAN 29% CO 23% PES  
Weight: 140 cm  
Width: 905 per linear meter/g  
Width: 646 per square meter/g  
Durability: 50 000 Martindale  
Seam slippage: <6mm  
Pilling (DIN EN ISO 12945-2)  
Rub fastness: Dry 4-5 Wet 4-5  
Lightfastness: for medium colours 5

**Flame retardant**

BS 5852: Part 1: 1979  
Ignition source 0 (Cigarette)

**Fabric**

Wave Dobby

**Washing Instructions**



020



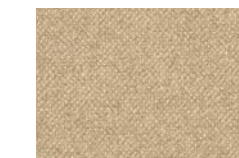
021



093



072



041



032



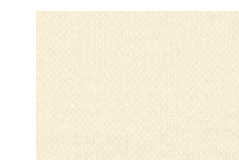
082



051



050



070

# TIVANO



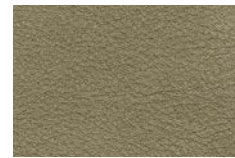
3611 - corda



3611 - corda



3606 - tabacco



3603 - militare



3612 - fumo

## Category

European cattle

## Composition

Raw material: European cattle

Tanning: Mineral

Protection: Semianiline

Description: Waxed hand buffed

Thickness: 1,2 - 1,4 mm

Average size: 5,0 m<sup>2</sup>

Dry finishing locking	EN ISO 11644	≥ n.a. N/cm
Tear resistance	EN ISO 3377-1	≥ 20 N/cm
Flexing endurance	EN ISO 5402	≥ 20.000 runs
Dry rub colour fastness	EN ISO 11640	150 runs ≥ 4 grey scale
Wet rub colour fastness	EN ISO 11640	25 runs ≥ 4 grey scale
Light fastness	EN ISO 105-B	≥ 4 blue scale
Heat colour fastness	EN ISO 17228	≥ 4 grey scale

Avoid exposure to direct sunlight and heat sources

Clean frequently and gently with a soft cloth

Remove stains with a damp cloth or with a specific cleaning product

# CUOIO LEATHER

Only for Frame sofa and armchair



naturale

## Composition

Bovine of European origin in Nabuk finishing, natural grain.

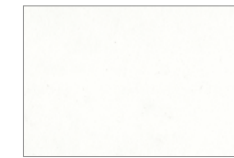
Average thickness 1.8/2.0 mm. Chrome tannage.

Aniline dyed with pigmented finish.

The possible presence of any imperfections testify the authenticity and the natural look of pure cuoio leather.



avorio



bianco



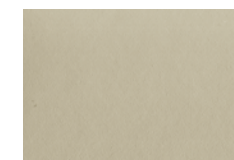
grigio



naturale



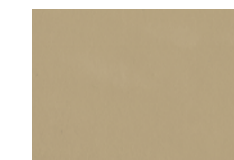
nero



nocciola



rosso bulgaro



sabbia



tabacco



testa di moro



tortora



verde fango

# KAIROS COLLECTION



1716 - doeskin

**Category**

Nabuck leather

**Composition**

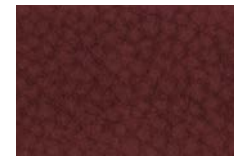
Bovine of European origin in Nabuk finishing, natural grain.  
 The average size of each skin is around 5.0 sqm. Chrome tannage.  
 Aniline dyed, finished with high quality oils. Suede look, soft and velvet touch.  
 The possible presence of any imperfections testify the authenticity and the natural look of pure aniline leather.  
 Average thickness 1,2 - 1,4 mm.



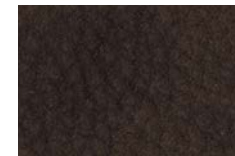
1719 - kangaroo



1716 - doeskin



1714 - lucky



1704 - chocolate forest



1701 - caqui



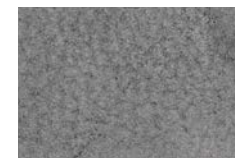
1711 - cenere



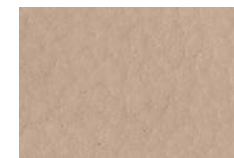
1721 - ematite



1715 - elephant



1710 - plomo



1718 - nude

# LINEA COLLECTION



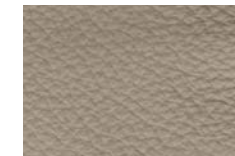
647 - grigio perla

**Category**

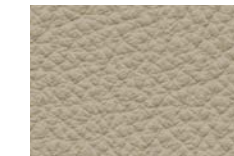
High quality bovine leather with lightly buffed natural grain

**Composition**

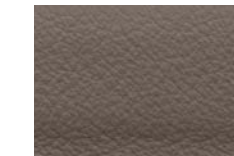
Bovine of European origin, lightly buffed natural grain, finished thickness 0.9 - 1.1 mm.  
 The average size of each hide is around 4.8 - 5.0 sqm. Chrome tannage.  
 Through dyed; finishing with resins and pigments. Article with a pigmented and protective coat, with a soft, waxy feel and semi-matt appearance.



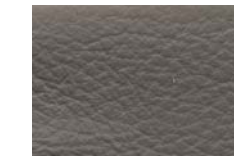
629 - stone



647 - grigio perla



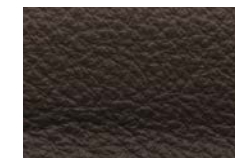
677 - malt



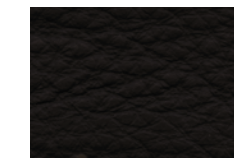
660 - asfalto



675 - new grey



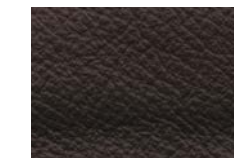
612 - castagna



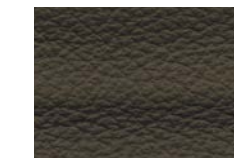
611 - testa moro



656 - cotto



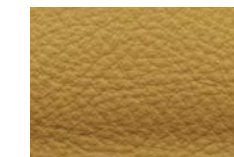
610 - mogano



632 - verdone



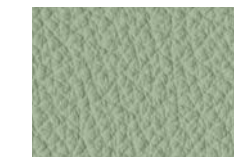
622 - nero



619 - gallino



634 - gesso



674 - octane

# AIDA COLLECTION



Daino

## Category

Nappa Smooth leather

## Composition

Average size 4,5-4,8 sqm, thickness 0,9-1,1 mm.

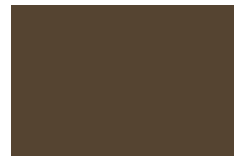
Chrome tannage.

Bovine leather with smooth aspect, aniline finished with some oils and waxes, produced on European bull.

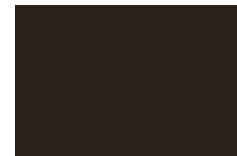
Aniline dyed, finished with high quality oils. Soft article with a slight two tones effect, emotional touch.

The possible presence of any imperfections and color variations are typical for this type of leather as they testify the authenticity and the natural look of pure aniline leather.

# TECHNICAL SPECIFICATIONS



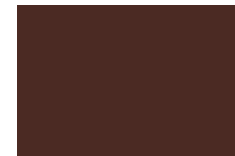
Daino



Coffee



Tan



Saddle



Blackberry



Spruce



Nocturne



Mud



Grey



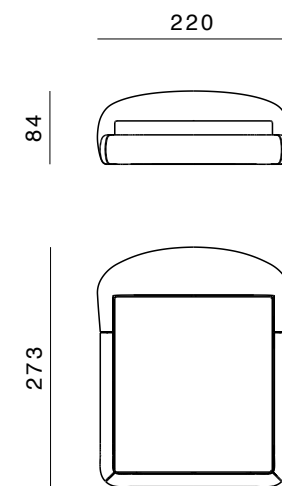
Sand

# Abbracci

Lorenza Bozzoli / Bed

## Structure

Internal structure in plywood panel and polyurethane rubber covered in fabric or leather.

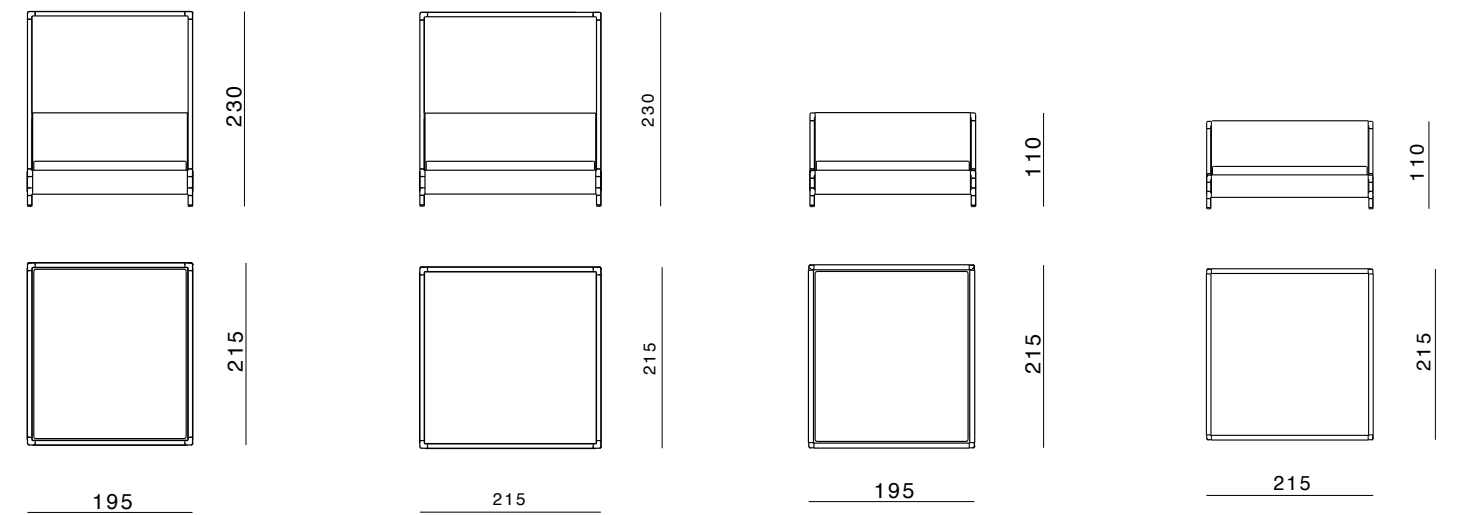


# Frame

Stefano Giovannoni / Beds

## Structure

The bed is based on the Frame family of castings. The frame castings are made of Italian aluminum, die casted in-house at Ghidini1961. Headboard and footboard in hand stitched natural saddle leather.



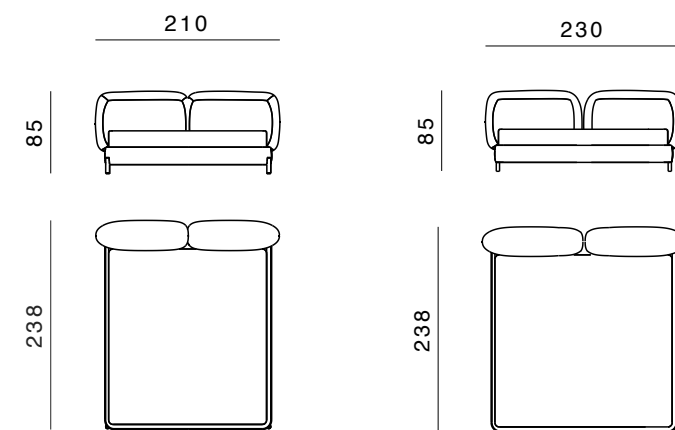
# Tarantino

Lorenza Bozzoli / Bed

## Structure

Internal structure in plywood panel and polyurethane rubber covered in fabric or leather.

Headboard by cushions in high grammage wadding with internal rubber insert, covered with a quilted goose down in cotton lining.



# Frame

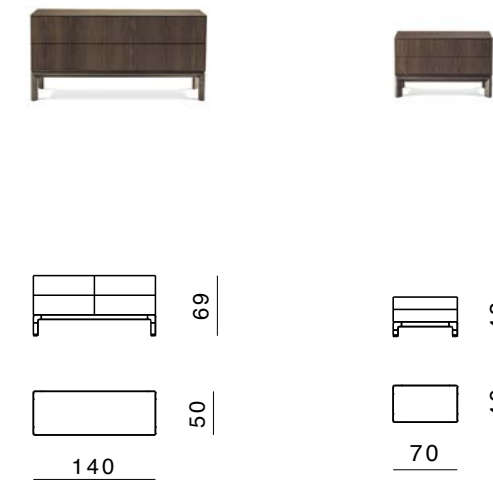
Stefano Giovannoni / Cabinets

## Structure

33x60mm oval tubular in aluminium with die-cast corners. Galvanic finish in polished brass, or satin brass and painted burnished brass. Dark Tulip Wood veneered melamine container, matte acrylic polish.

## Interior

interior shelving and internal bases in wood. Opening with internal push system



# Tarantino

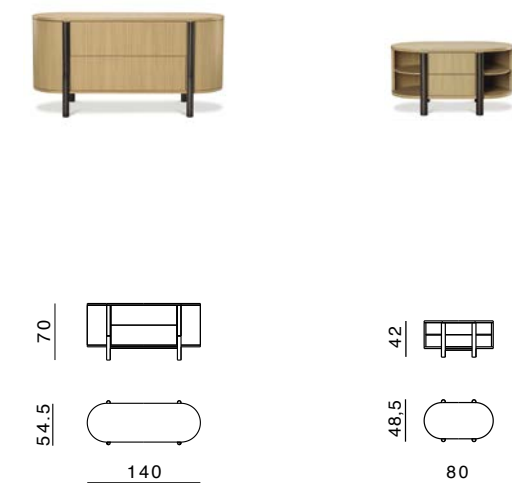
Lorenza Bozzoli / Cabinets

## Structure

Extruded aluminium for the supporting structure and for the handles. Wood veneered container.

## Interior

Interior shelving and internal bases covered in wood. Opening with internal push system.



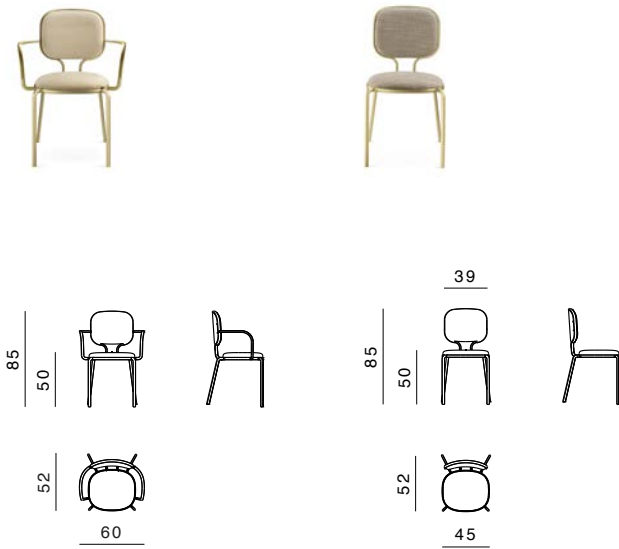
# Liù

Paolo Rizzatto / Chairs

## Structure

The legs, seat and backrest are in aluminum die casted in house at Ghidini1961.

Cushions in high grammage wadding with internal wood insert.



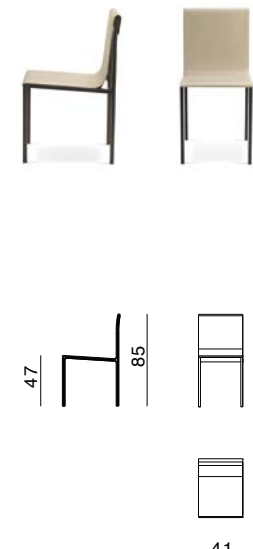
# Fabbrica

Branch Creative / Chair

## Structure

Structure in aluminum die casted in house at Ghidini1961.

Seat and backrest available in leather or fabric.



# Alfred and Hillary

Richard Hutten / Stools

## Structure Alfred

Metal structure in chromed iron. Seat and backrest in polyurethane rubber.

## Structure Hillary

Metal structure in chromed iron. Seat and backrest in molded polyurethane rubber.

### Alfred

### Hillary

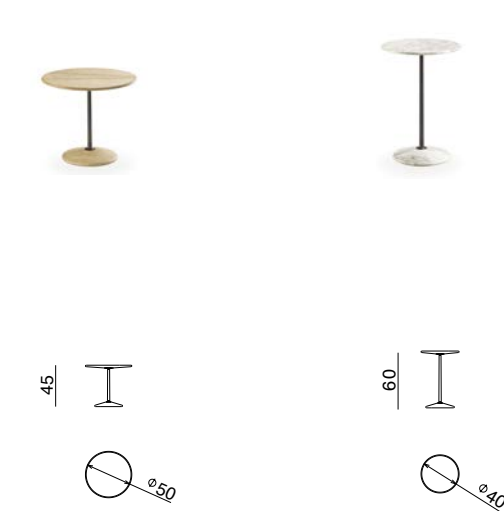


# Arnold

Paolo Rizzatto / Side tables

## Structure

Base and table top in marble or wood. Central element made of a conic aluminum column.

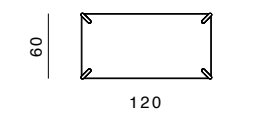
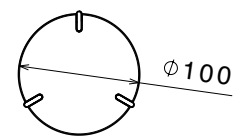
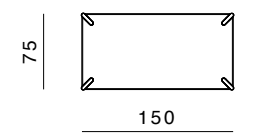
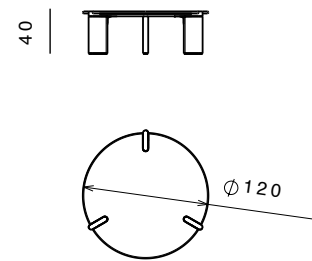
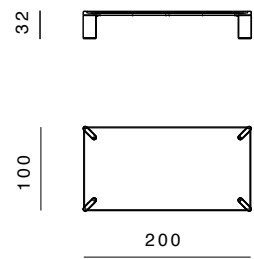


# Ottanta

Lorenza Bozzoli / Coffee tables

## Structure

Base structure in brass plated aluminum bended round tube. Internal structure with metal supporting frame

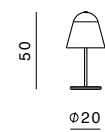
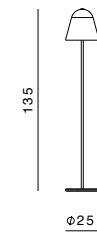


# Helios

Branch Creative / Lamps

## Structure

Metal structure in painted aluminum. Internal sphere and external cone made by blown glass. LED dimmable light.



# Triple Waves

Lorenza Bozzoli / Rugs

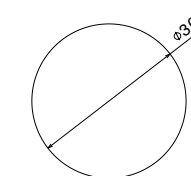
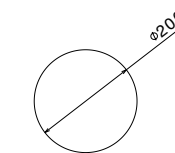
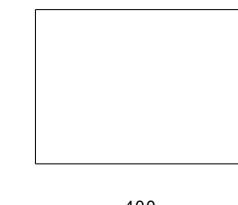
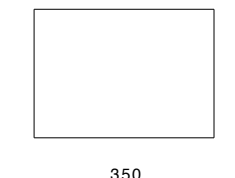
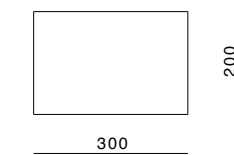
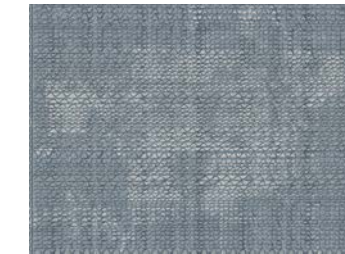
## Material

New Zealand wool and Tencel

## Technique

Hand tufted  
The fleece can then be finished by hand to different thicknesses with the use of scissors.  
The fleece can be held as a "velvet" or a "loop" (small bouclé).

At the end of the weaving process, natural latex is poured on the back of the carpet, which gives greater compactness to the structure of the carpet.  
Finally, a cotton cloth is applied on the back as a finishing touch.



# Connect

Richard Hutten / Rugs

## Material

New Zealand wool and Tencel

## Technique

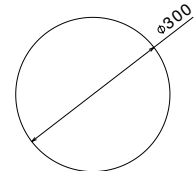
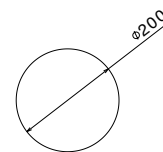
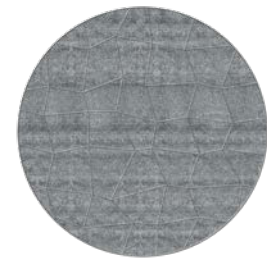
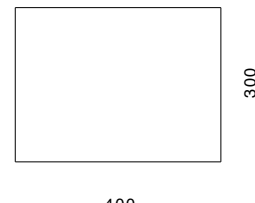
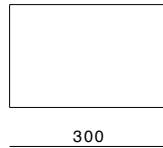
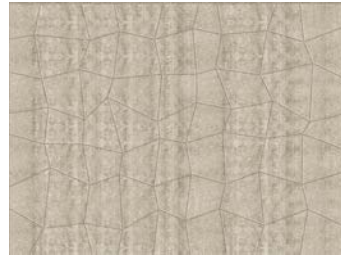
Hand tufted

The fleece can then be finished by hand to different thicknesses with the use of scissors.

The fleece can be held as a "velvet" or a "loop" (small bouclé).

At the end of the weaving process, natural latex is poured on the back of the carpet, which gives greater compactness to the structure of the carpet.

Finally, a cotton cloth is applied on the back as a finishing touch.



# Plumose

Richard Hutten / Rugs

## Material

New Zealand wool and Tencel

## Technique

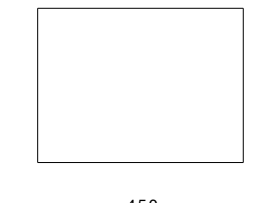
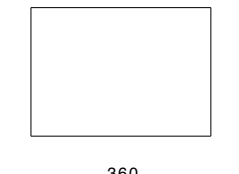
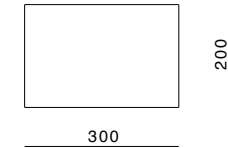
Hand tufted

The fleece can then be finished by hand to different thicknesses with the use of scissors.

The fleece can be held as a "velvet" or a "loop" (small bouclé).

At the end of the weaving process, natural latex is poured on the back of the carpet, which gives greater compactness to the structure of the carpet.

Finally, a cotton cloth is applied on the back as a finishing touch.



**Photos**

Fabrizio Bergamo  
Cube Photoproduction

**Styling**

Candida Zanelli, Rosaria Galli

**Branding**

Christoph Radl, Antonella Provasi

**Graphic layout and Printing**

Intese Grafiche, Montichiari (Bs)

**Many Thanks to:**

Jab  
Nason Moretti

**GHIDINI 1961 INICIUM**

is a trademark of  
Ghidini Giuseppe Bosco spa

via Gabriele D'Annunzio 27  
25069 Villa Carcina (BS) Italy  
T +39 030 8980521  
F +39 030 8981588  
info@ghidini1961.com

**Press office**

press@ghidini1961.com

**Sales office**

sales@ghidini1961.com

www.ghidini1961.com

