



**TRIBECA**  
*Loft Philosophy*

**N**<sup>1926</sup>  
**MANTELLASSI**

# Tribeca

Loft Philosophy

Home collection

## Index

Agostina	180	148	Lazy
Baruffa	160	208	Meccanica dining table
Couch	168	212	Meccanica chair
Cubo	066	214	Meccanica armchair
Diadema chest of drawers	174	058	Over
Diadema bedside table	178	088	Paco
Ercole tv holder	068	118	Pappagalle
Ercole chest of drawers	072	216	Parabolica
Ercole bedside table	078	006	Pelé
Esse	220	014	Placido sofa
Fedro	062	166	Placido bed
Flipper chandelier	032	094	Pulce
Flipper standing lamp	036	132	Rocco
Flipper table lamp	042	026	Roma
Flipper applique	046	154	Sandy
Fonzie	126	030	Scricciolo
Frisbee	112	138	Strike
Glam	050	186	Tipo
Igloo standing lamp	038	080	Totò chandelier
Igloo table lamp	044	082	Totò standing lamp
Igloo applique	047	098	Tury tv holder
Isidoro	190	106	Tury buffet
Italo	142	108	Tury bar
Jole	204	194	Valzer
Kaki	114	200	Vertigo



**M**<sup>1926</sup>  
MANTELLASSI

# Tribeca

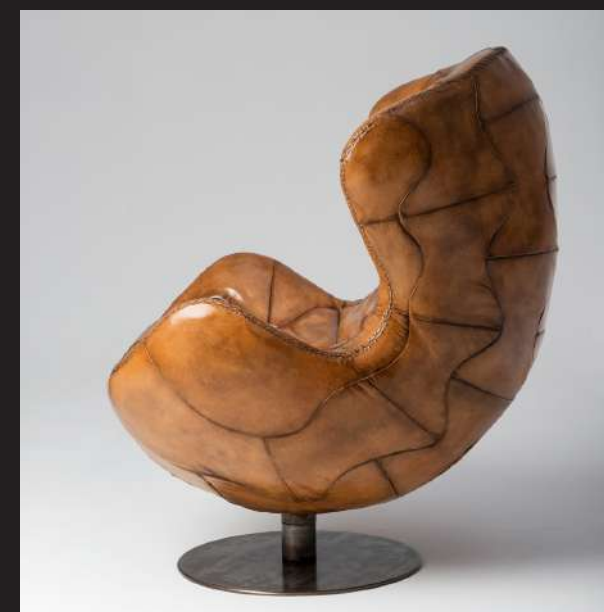
Loft Philosophy

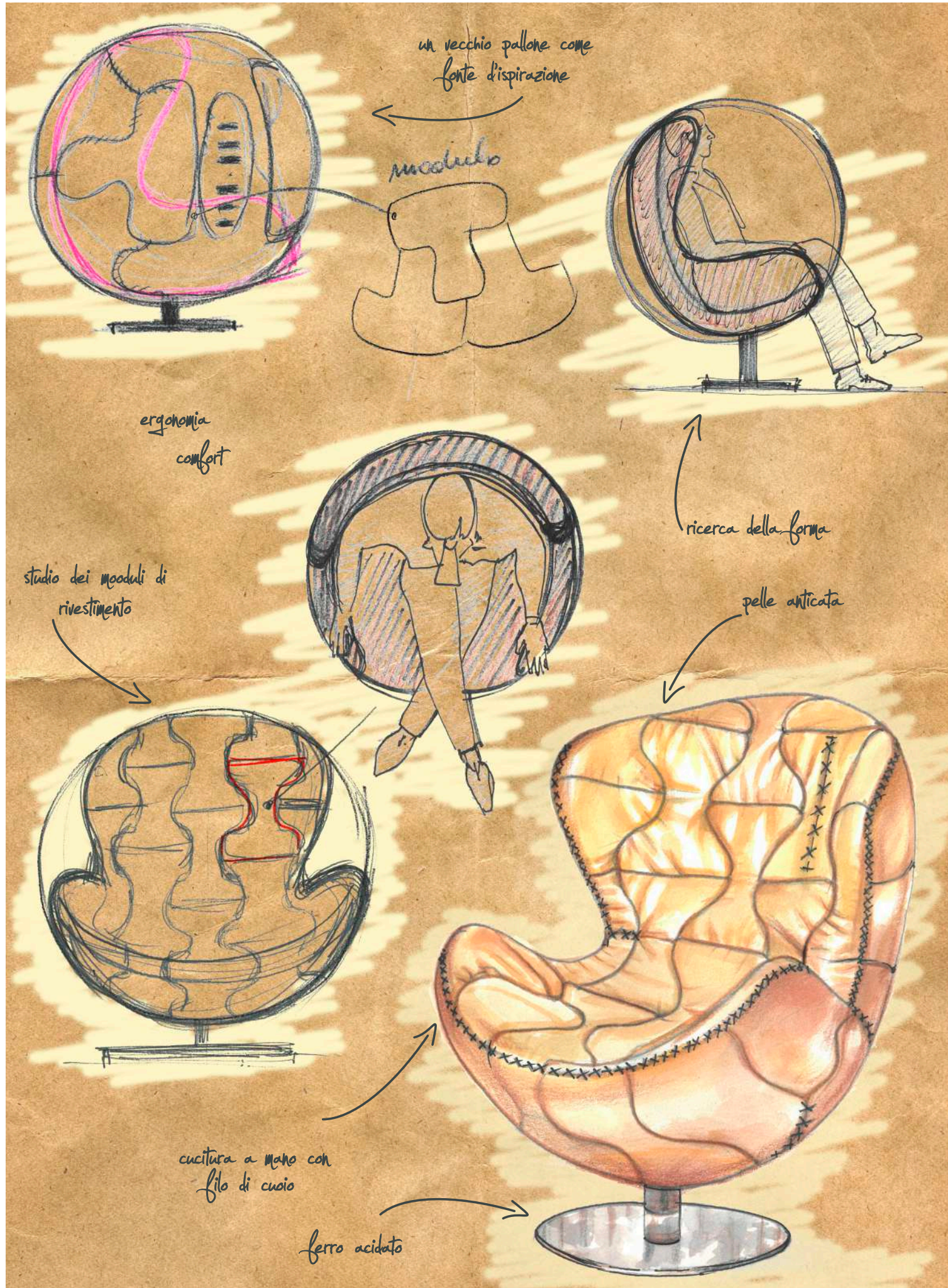
Welcome to Mantellassi's Tribeca Loft Collection. We are a leading brand specialized in authentic, high-quality, vintage style furniture that is guaranteed to enrich any space with timeless elegance and unique character. As we value luxury and craftsmanship, all of our tables, cabinets, chairs and sofas are exclusively hand-made. Designed by true furniture enthusiasts, Marco and Giulio Mantellassi, Tribeca Loft Collection operates from a love for furniture and quality. Every item is made with passion and the finest materials available. Oak and pine are the preferred choice of wood. Both tree species are known to produce lumber that is naturally full of interesting details and vivid character. But above all, Tribeca Loft Collections is known for its use of exquisite, genuine, natural coverings; the first is buffalo leather. Thick, rich and full with character, buffalo leather is ideally suited to produced luxurious, one-of-a-kind chairs and sofas. Then the Pure Linen, decorated with passion and accessories, to create a young, pretty new design.



# Pelé

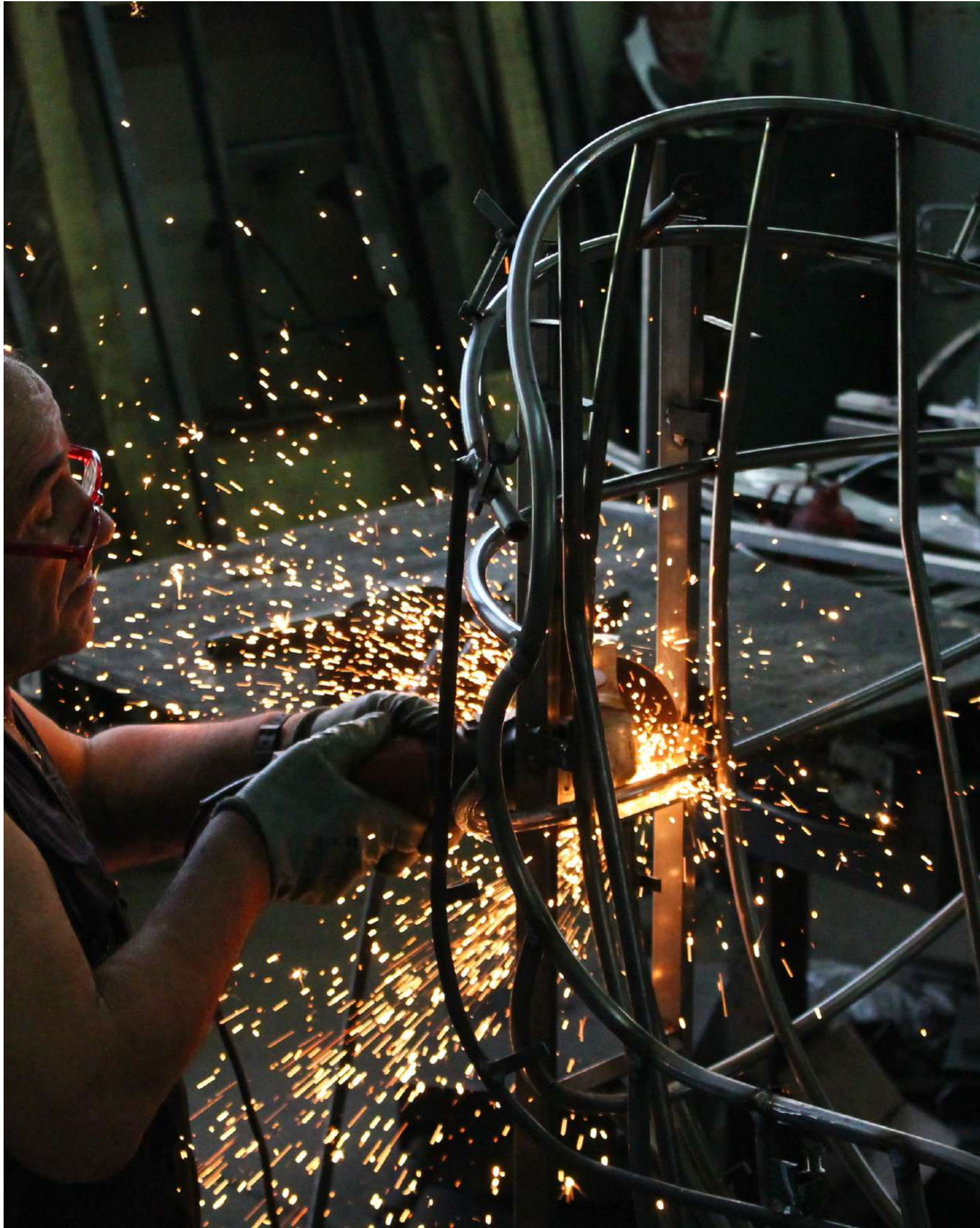
armchair





"THE PEOPLE WHO ARE CRAZY ENOUGH TO THINK THEY CAN CHANGE THE WORLD ARE THE ONES WHO DO."

STEVE JOBS

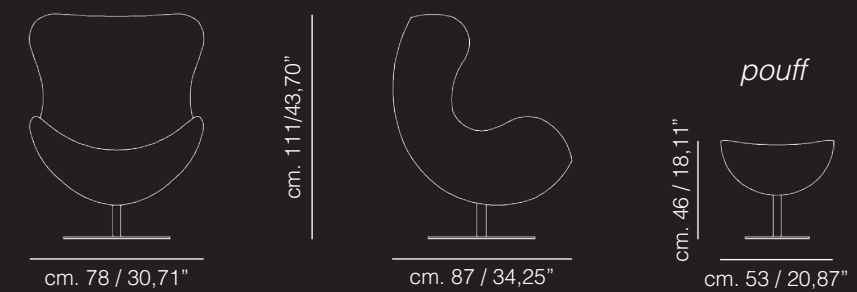




**Pelé**  
armchair

Pelé, omaggio al grande calciatore famoso nel mondo, è realizzata con le stesse tecniche di lavorazione degli antichi palloni da calcio. Pelle crust, conciata al naturale, cucita a mano e anticata secondo le tecniche degli antichi maestri pellettieri toscani. La struttura si appoggia su una base in acciaio acidato a mano con meccanismo girevole e oscillante davvero confortevole.

*Pelè, a tribute to the greatest soccer player in the world, is created with the same workmanship techniques used in making the soccer balls of old. Naturally tanned, hand-stitched crust leather, antiqued according to the techniques of the ancient Tuscan leather masters. The structure sits on a base acid-etched by hand with an extremely comfortable swivel and oscillating mechanism.*







# Placido

sofa





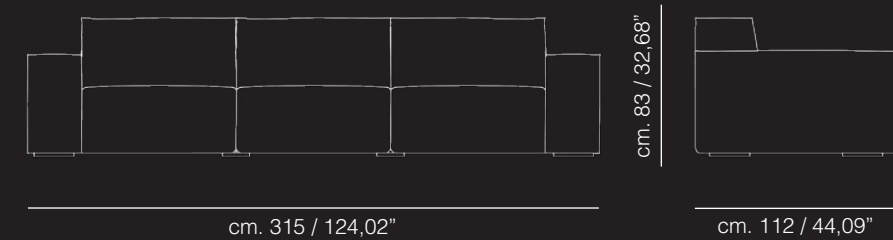




**Placido**  
sofa

Sobrio ed elegante divano in pelle vintage. Le cuciture a taglio vivo tracciano la rigorosa silhouette, determinando una meticolosa coerenza fra bellezza, semplicità e solidità. Il comfort è garantito anche dai meccanismi relax che permettono alle sedute di prolungarsi e distendersi. Le zampe sono realizzate in faggio laccato nero.

*A sober and elegant vintage leather sofa. The raw-edge seams trace the geometrical contours, giving rise to a meticulous consistency between beauty, simplicity and solidity. Its comfort is also guaranteed by the relaxation mechanisms that allow the seats to extend and stretch out. The legs are in beech wood black lacquer.*



\* available in different sizes



# Roma

armchair

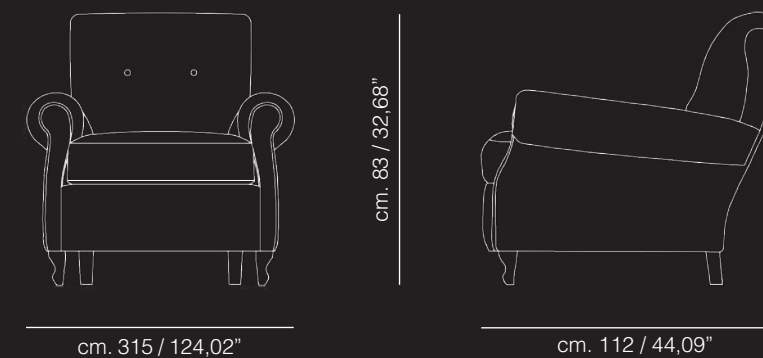




**Roma**  
armchair

Lo stile senza tempo di questa poltrona si addice ad ogni ambiente. Le forme intramontabili, l'eccellente comfort e la bellezza dei materiali, rendono questo oggetto unico nel suo genere. Preziosa la finitura della pelle crust naturale patinata a mano e la base in faggio tinto noce.

*The enduring style of this armchair is suited to every type of environment. The timeless shapes, the unequalled comfort and the beauty of the materials, together with the value of the finish in natural hand-coated crust leather and the walnut-stained base, all make this a one-of-a-kind armchair.*

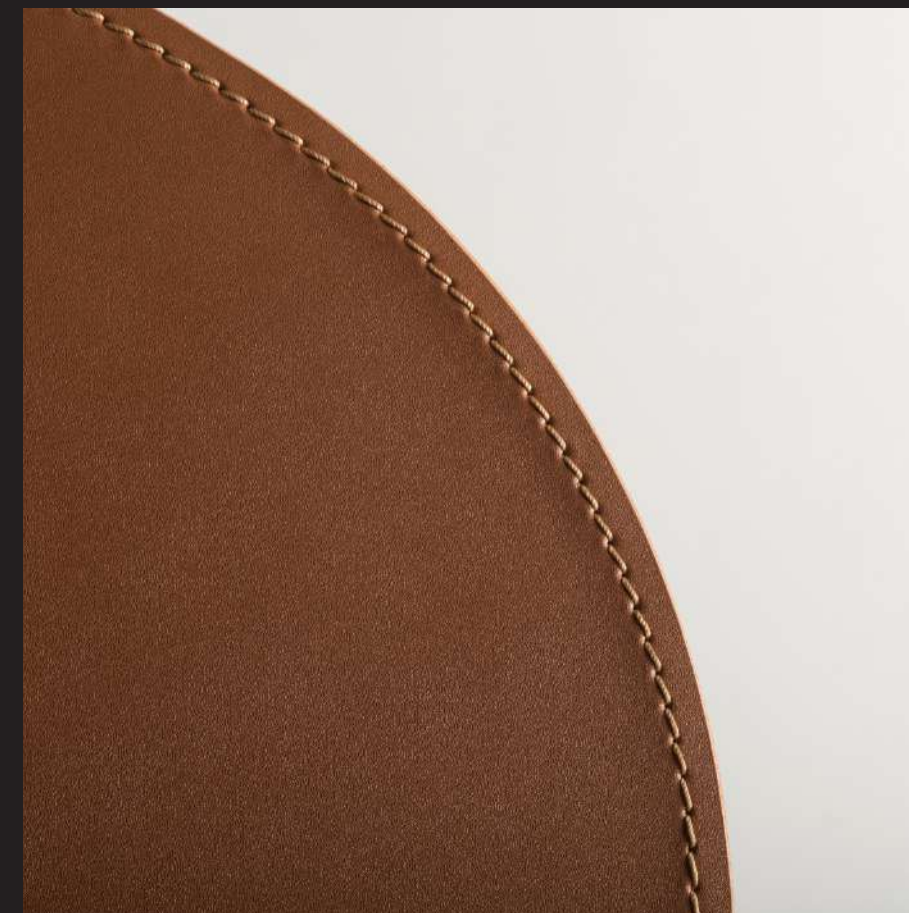


# Scricciolo

side table



**Tribeca**  
Loft Philosophy

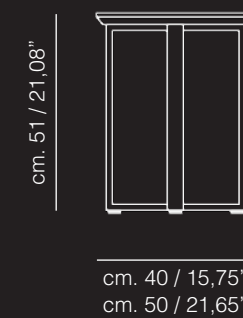


## Scricciolo

side table

Rigore e semplicità per questo oggetto realizzato su una struttura in acciaio nero micaceo e con il piano rivestito in vero cuoio.

*Rigour and simplicity for these side tables made consisting of a frame in micaceous black steel and a top covered in real leather.*



# Flipper

chandelier



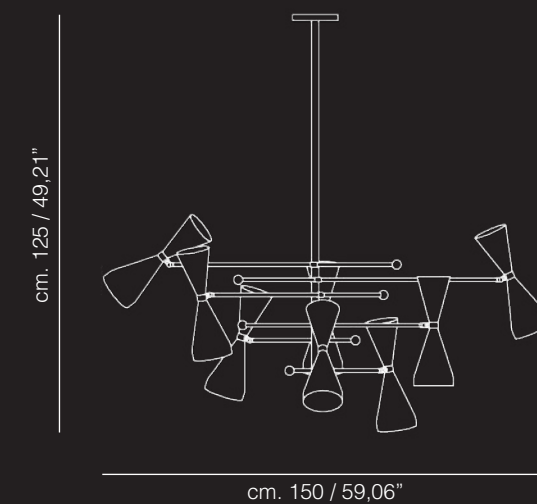


# Tribeca

Loft Philosophy



**Flipper**  
chandelier





# Tribeca

Loft Philosophy

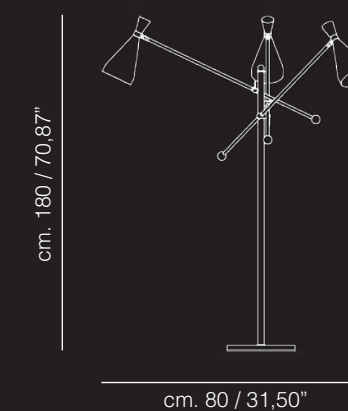


## Flipper

standing lamp

I corpi luminosi si giustappongono ricercando un ordine luminoso che altro non è che un atto di equilibrio di estrema precarietà. I vari elementi sono coordinati dal punto di vista cromatico con colori elementari, chiaro riferimento, anche per le forme, al mondo vintage da cui provengono.

*Here the lamps are overlapping in a lighting order that is none other than an extremely precarious balancing trick. The various components are coordinated chromatically with elementary colours, a clear reference, also in relation to their shapes, to the vintage world from which they derive.*



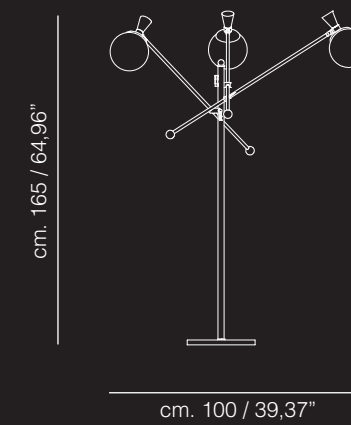




**Igloo**  
standing lamp

Un sistema di sfere opacizzate filtra una luce tiepida che orbita attorno al corpo centrale metallico acidato a mano. L'equilibrio dei corpi luminosi appesi ai bracci della struttura è ciò che rende l'oggetto così affascinante.

*A system of opaque spheres filters a soft light that orbits around the central metal body acid-etched by hand. The equilibrium of the lamps hanging from the arms of the structure is what makes this lamp so utterly fascinating.*





# Tribeca

Loft Philosophy

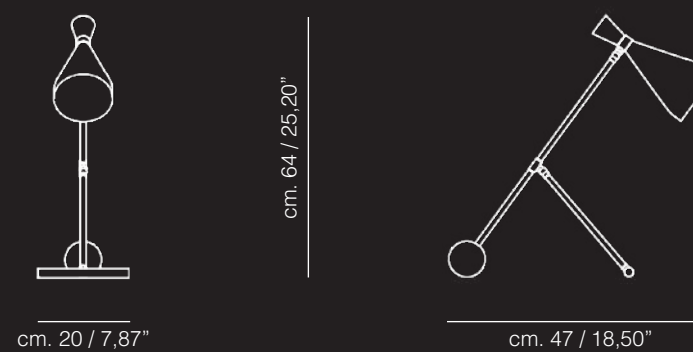


## Flipper

table lamp

Corpo illuminante che si distingue per la sua semplicità, la testa conica funge da fonte luminosa poggiata su una struttura metallica acidata a mano.

*A lamp that stands out for its simplicity, with the conical head acting as a light source resting on a metal structure acid-etched by hand.*





# Tribeca

Loft Philosophy

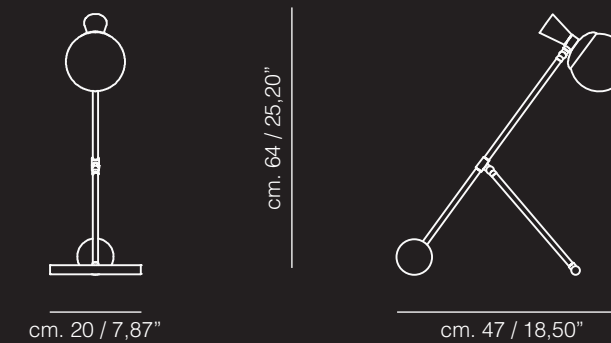


## Igloo

table lamp

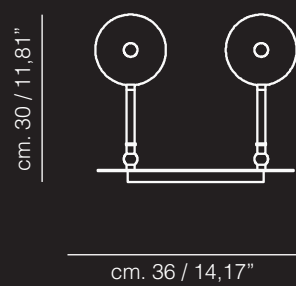
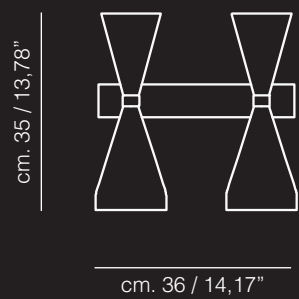
Piccolo elemento sferico sostenuto da una leggera struttura metallica acidata a mano, il quale emana un morbido fascio di luce nell'ambiente circostante.

*The small spherical element supported by a lightweight metal structure acid-etched by hand emanates a soft beam of light into the surrounding environment.*

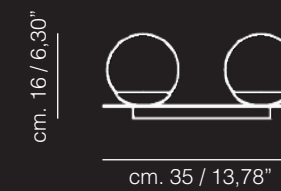
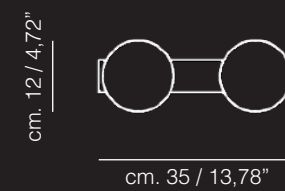




**Flipper**  
applique



**Igloo**  
applique



**M**<sup>1926</sup>  
MANTELLASSI  
**Tribeca**  
Loft Philosophy



# Glam

sofa





*“MODERNITY DOES NOT LIE IN ADOPTING  
FOUR SQUARE FURNISHING ELEMENTS.”*

*GIO PONTI*



# Tribeca

Loft Philosophy

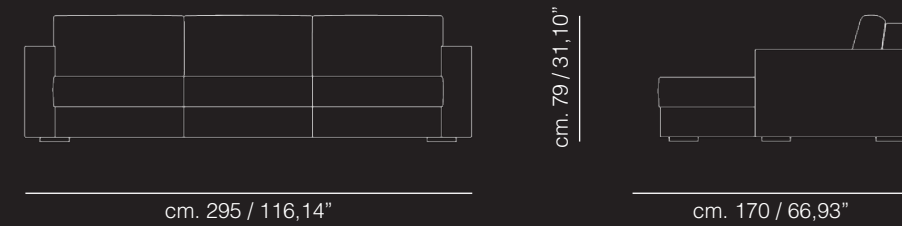


## Glam

sofa

Design rigoroso, geometrico nel body, soft nella cuscinatura in piuma d'oca. Modello componibile con misure generose, adatto per ogni soluzione contemporanea. La zampa in metallo supporta il divano rendendolo leggero.

*Rigorous design, geometric in the body, soft in the cushion made in down feather. Sectional with generous sizes, suitable for every contemporary solution. The metal leg supports the sofa making it lighter.*



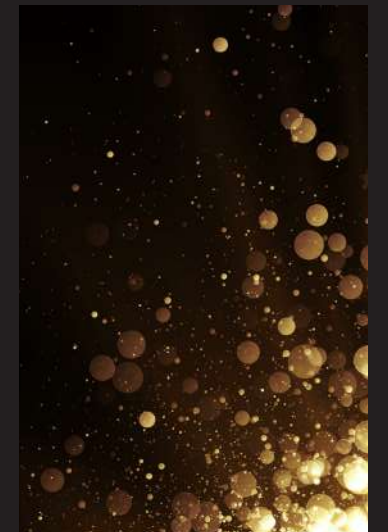
\* available in different sizes  
 \*\* the technical drawings refer to page 56/57





# Over

armchair

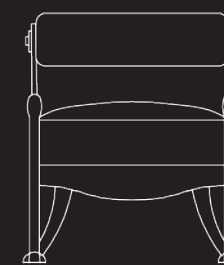




**Over**  
armchair

Prezioso prodotto storico dell'archivio Mantellassi. Struttura in bronzo fuso e cesellato a mano, questo importante pezzo rappresenta un cult della nostra collezione. Per la sua straordinaria versatilità, si colloca in qualsiasi ambiente. Fantastica in ogni rappresentazione stilistica e di grande tendenza.

*A valuable historical product of the Mantellassi archive. Structure in cast bronze chiselled by hand, this important armchair represents a cult of our collection. Because of its extraordinary versatility, it is suitable for any environment. Extremely trendy, is a fantastic item in every stylistic representation.*



cm. 70 / 27,56"



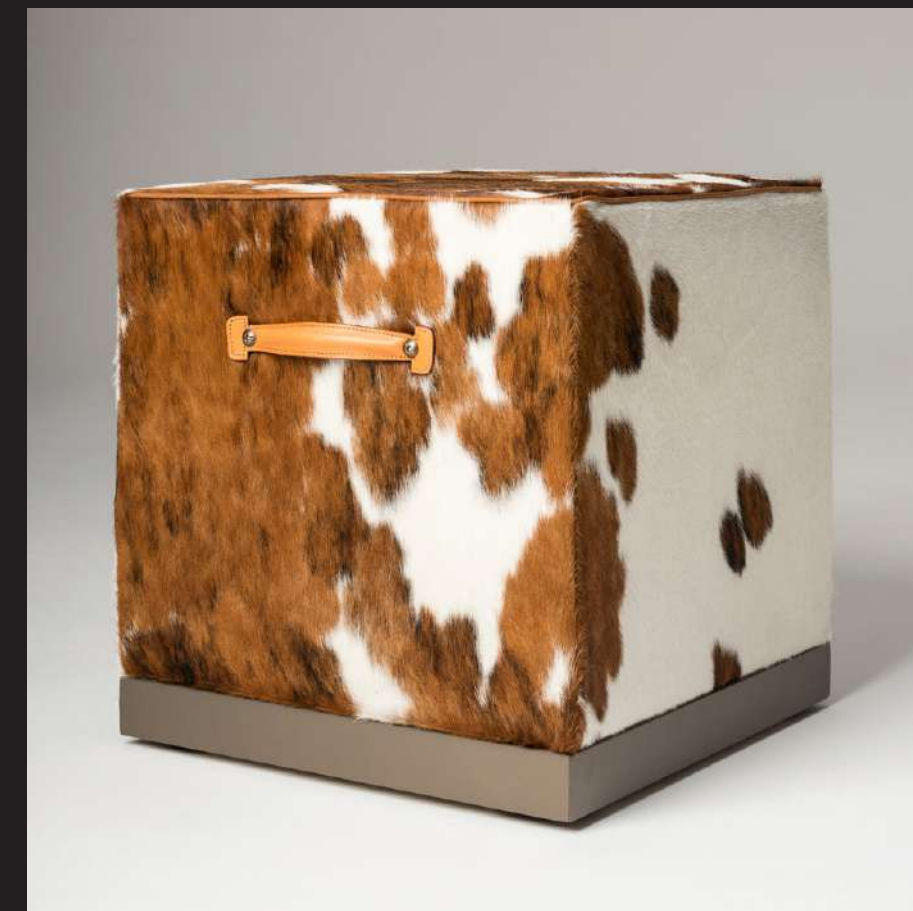
cm. 80 / 31,50"

cm. 82 / 32,28"

# Fedro

pouff

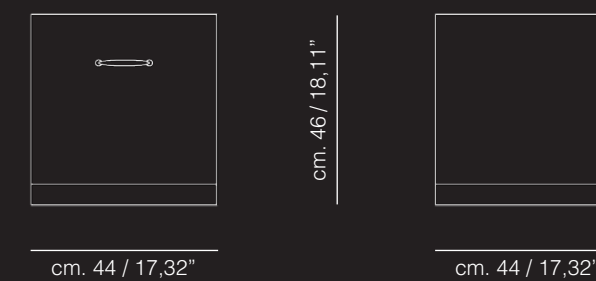




**Fedro**  
pouff

Un oggetto pulito, rigoroso nel design ma flessibile nell'uso, utilizzabile come seduta aggiuntiva, supporto per vassoio o tavolino d'angolo. Le ruote incassate nella base permettono di spostarlo facilmente.

*A clean footstool, strict in the design but flexible in use, from an added seat to great support for the tray, or a side table. The embedded wheels allow to move it easily.*



# Cubo

coffee table



**Tribeca**  
Loft Philosophy

Tribeca Collection



## Cubo

coffee table

Coffee table dalla linea essenziale, reso prezioso dalla foglia di eucalipto frisee termotrattato, sapientemente montata e trattata per esaltare la tridimensionalità della venatura. La base arretrata in lamiera di ottone brunito solleva e alleggerisce la rigidità del monolite.

*Coffee table with simple lines, enhanced with heat-treated curly eucalyptus leaf, expert-ly assembled and treated so as to exalt the three-dimensionality of the veining. The smaller-sized base in burnished brass plate relieves and adds lightness to the geo-metrical lines of the monolith.*



# Ercole

tv holder





# Tribeca

Loft Philosophy

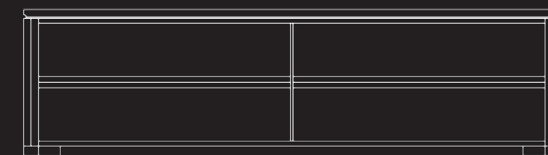


## Ercole

tv holder

Mobile porta tv dalla linea compatta ed essenziale, reso prezioso dalla foglia di eucalipto frisee termotrattato, sapientemente montata e trattata ad esaltare la tridimensionalità della venatura. La linea rigorosa è enfatizzata dal piano in vetro laccato scuro ed esaltata dalle maniglie e dai piedini in ottone brunito. L'interno di ogni cassetto è rivestito in vero cuoio per custodire con cura gli oggetti riposti.

*TV holder cabinet with compact and simple lines, enhanced with heat-treated curly eucalyptus leaf, expertly assembled and treated so as to exalt the three-dimensionality of the veining. The rigorous geometry is emphasized by the dark lacquered glass top and embellished with handles and feet in burnished brass. The insides of the drawers are lined in real leather for storing the things inside with the greatest of care.*



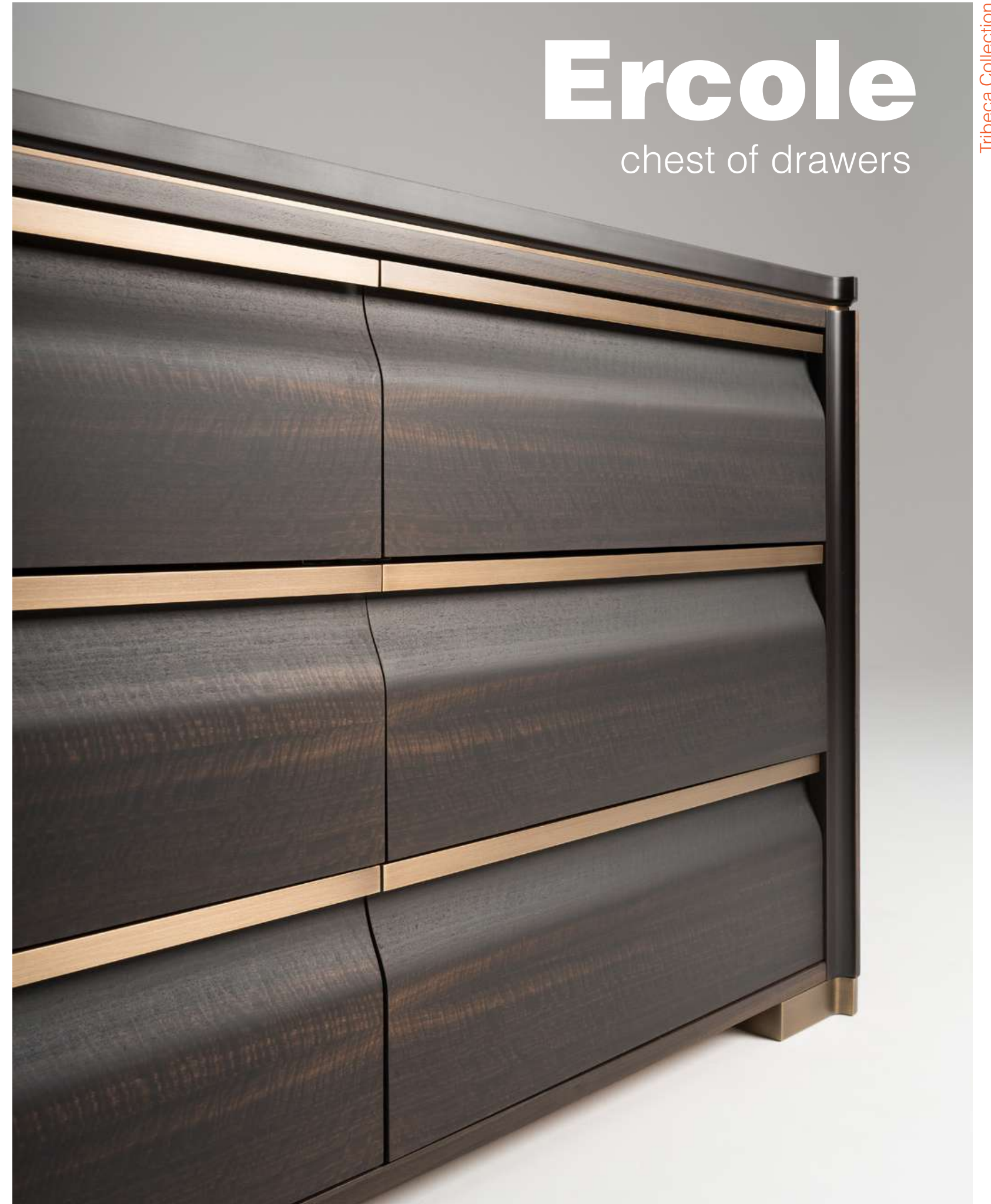
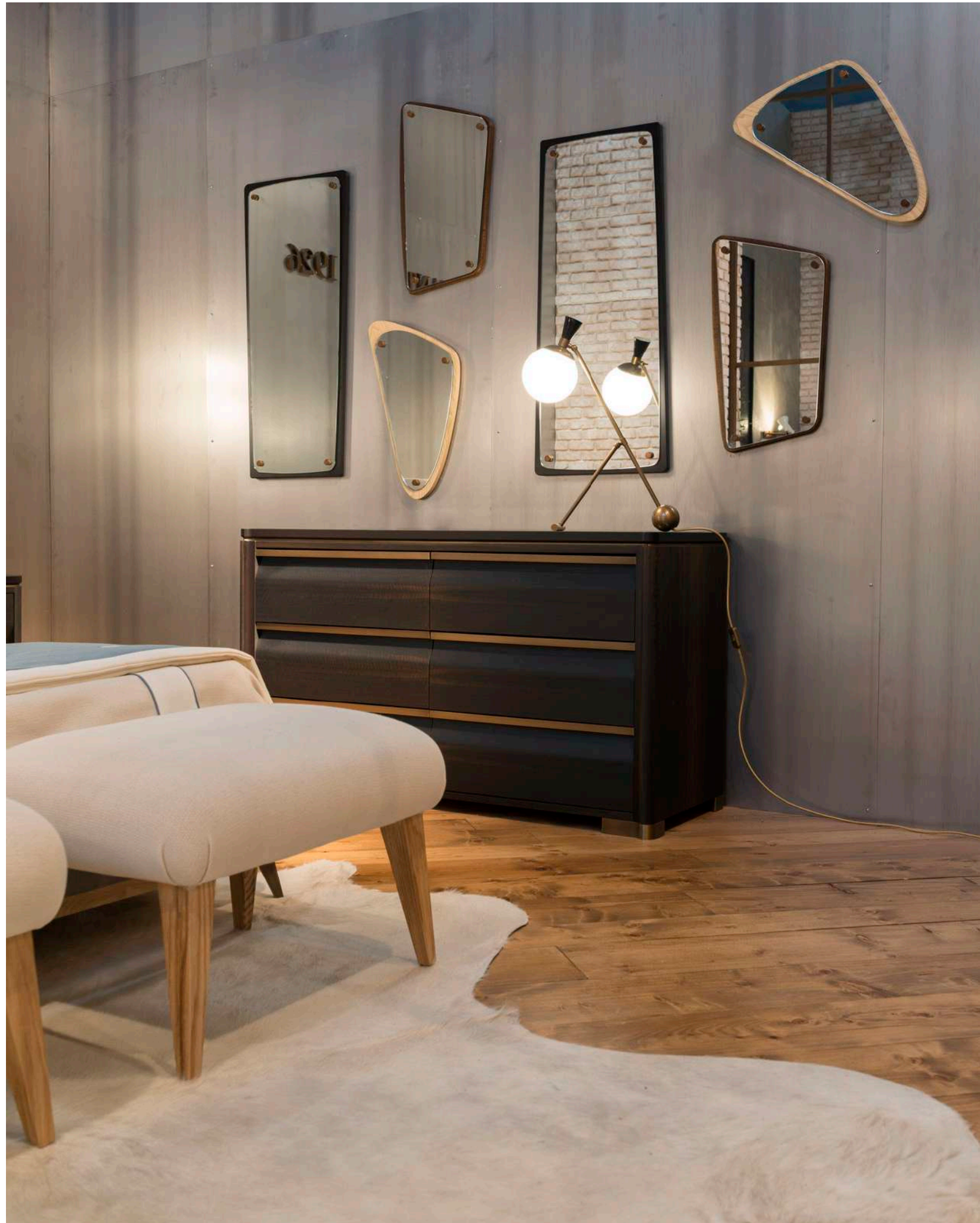
cm. 221 / 87,01"



cm. 60 / 23,62"



cm. 55 / 21,65"



# Ercole

chest of drawers

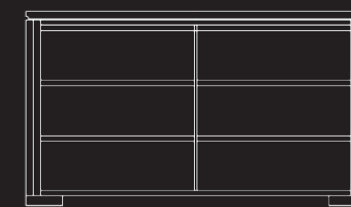




**Ercole**  
chest of drawers

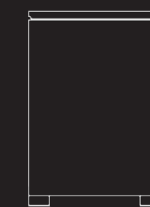
Cassettone dalla linea compatta ed essenziale, reso prezioso dalla foglia di eucalipto frisee termotrattato, sapientemente montata e trattata ad esaltare la tridimensionalità della venatura. La linea rigorosa è enfatizzata dal piano in vetro laccato scuro ed esaltata dalle maniglie e dai piedini in ottone brunito. L'interno di ogni cassetto è rivestito in vero cuoio per custodire con cura gli oggetti riposti.

*Chest of drawers with compact, essential lines, enhanced with the heat-treated eucalyptus leaf, expertly assembled and treated so as to exalt the three-dimensionality of the veining. The geometrical lines are emphasized by the dark lacquered glass top and embellished with handles and feet in burnished brass. The insides of the drawers are lined in real leather for storing the things inside with the greatest of care.*



cm. 140 / 55,12"

cm. 80 / 31,50"



cm. 55 / 21,65"

# Ercolino

bedside table



**Tribeca**  
Loft Philosophy

Tribeca Collection

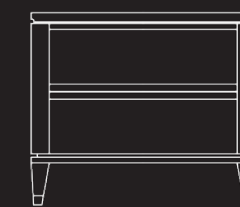


## Ercolino

bedside table

Comodino dalla linea compatta ed essenziale, reso prezioso dalla foglia di eucalipto frisee termotrattato, sapientemente montata e trattata ad esaltare la tridimensionalità della venatura. La linea rigorosa è enfatizzata dalle maniglie e dai piedini in ottone brunito. L'interno di ogni cassetto è rivestito in vero cuoio per custodire con cura gli oggetti riposti.

*Bedside table with compact, essential lines, enhanced with heat-treated curly eucalyptus leaf, expertly assembled and treated so as to exalt the three-dimensionality of the veining. The geometrical lines are emphasized by the dark lacquered glass top and embellished with handles and feet in burnished brass. The insides of the drawers are lined in real leather for storing the things inside with the greatest of care.*



cm. 74 / 29,13"

cm. 63 / 24,80"



cm. 48 / 18,90"

\* available in different sizes

# Totò

chandelier



# Totò

standing lamp



*“ARCHITECTURE IS THE MASTERLY, CORRECT AND MAGNIFICENT  
PLAY OF MASSES BROUGHT TOGETHER IN LIGHT.”*

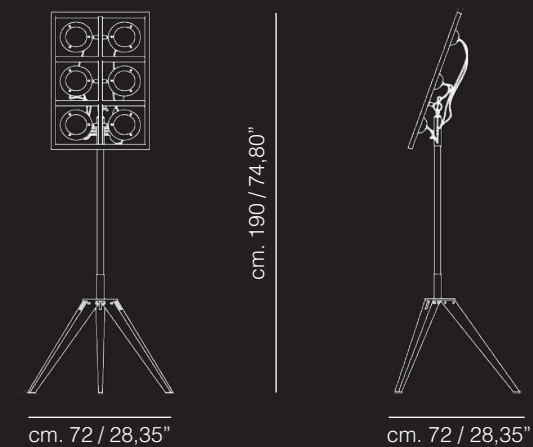
*LE CORBUSIER*



**Totò**  
standing lamp

Treppiedi ispirato agli iconici riflettori cinematografici, rievoca un pezzo di storia del design hollywoodiano anni '30. La base in massello di rovere antico sostiene l'elemento illuminante composto da una griglia metallica acidata a mano, in cui le luci spot sono inserite per poter essere orientate nello spazio.

*This tripod inspired by the iconic movie reflectors recalls a piece of the history of Hollywood design from the 1930s. The base in solid antique oak supports the light fixture consisting of a metallic grid acid-etched by hand in which the spotlights are inserted for being directed into the environment.*



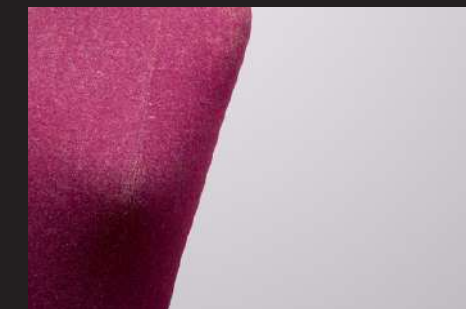
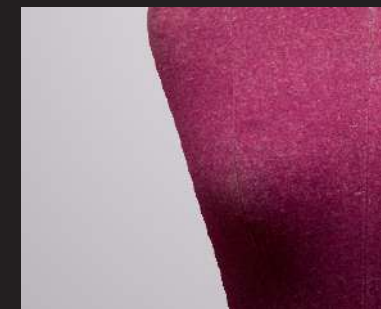


M<sup>1926</sup>  
MANTELLASSI  
**Tribeca**  
Loft Philosophy



# Paco

sofa







# Tribeca

Loft Philosophy



## Paco

sofa

Semplice e raffinato, questo oggetto rappresenta un classico intramontabile. La struttura proporzionata ed armoniosa, in pelle vintage, racchiude morbidi ed accoglienti cuscini in puro lino. Il suo comfort è garantito dalle tradizionali molle a cono.

*Simple yet refined, this sofa is a timeless classic. The well-proportioned, harmonious structure in vintage leather contains soft embracing cushions in pure linen. Its comfort is guaranteed by the traditional conical springs.*

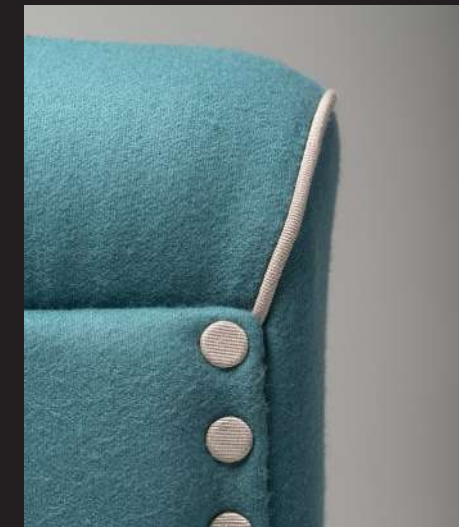


\* available in different sizes



# Pulce

armchair





# Tribeca

Loft Philosophy



## Pulce

armchair

Originale riedizione di questa poltroncina dalle curve armoniose e senza tempo. Lo spirito giocoso della sua reinterpretazione la rendono adatta a qualsiasi ambiente.

*An original re-edition of this armchair with its timeless harmonious curves. The playful spirit of this re-interpretation makes this chair suitable for any environment.*

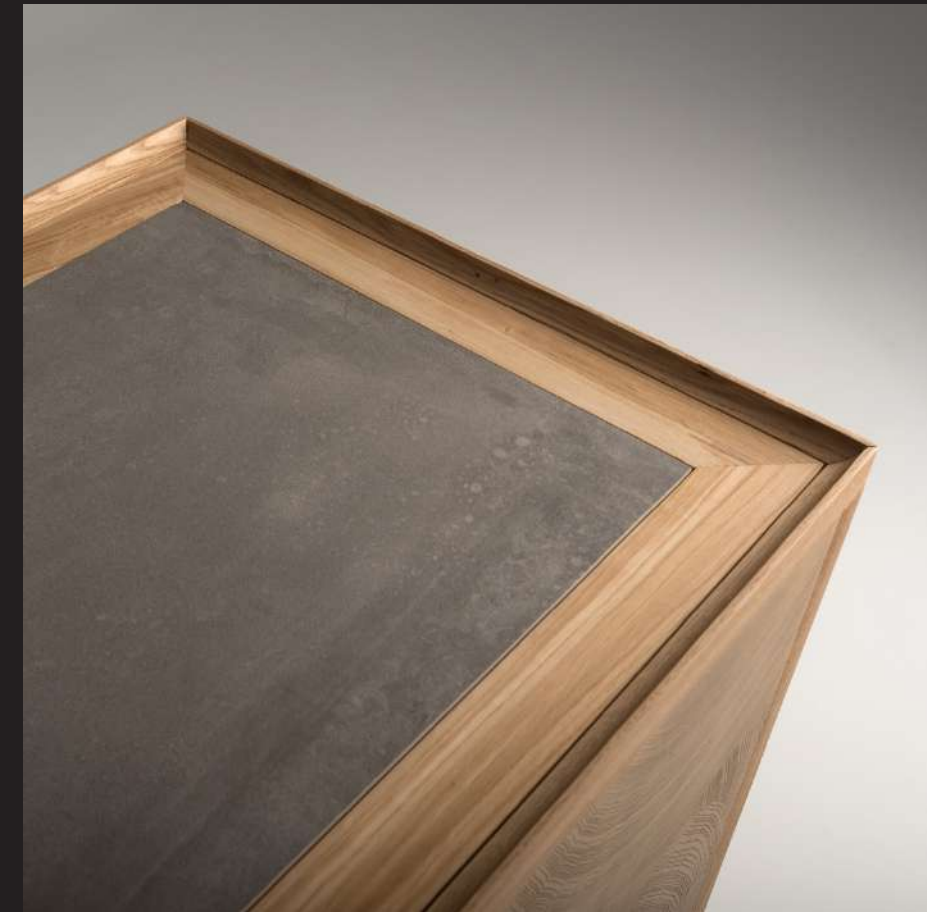
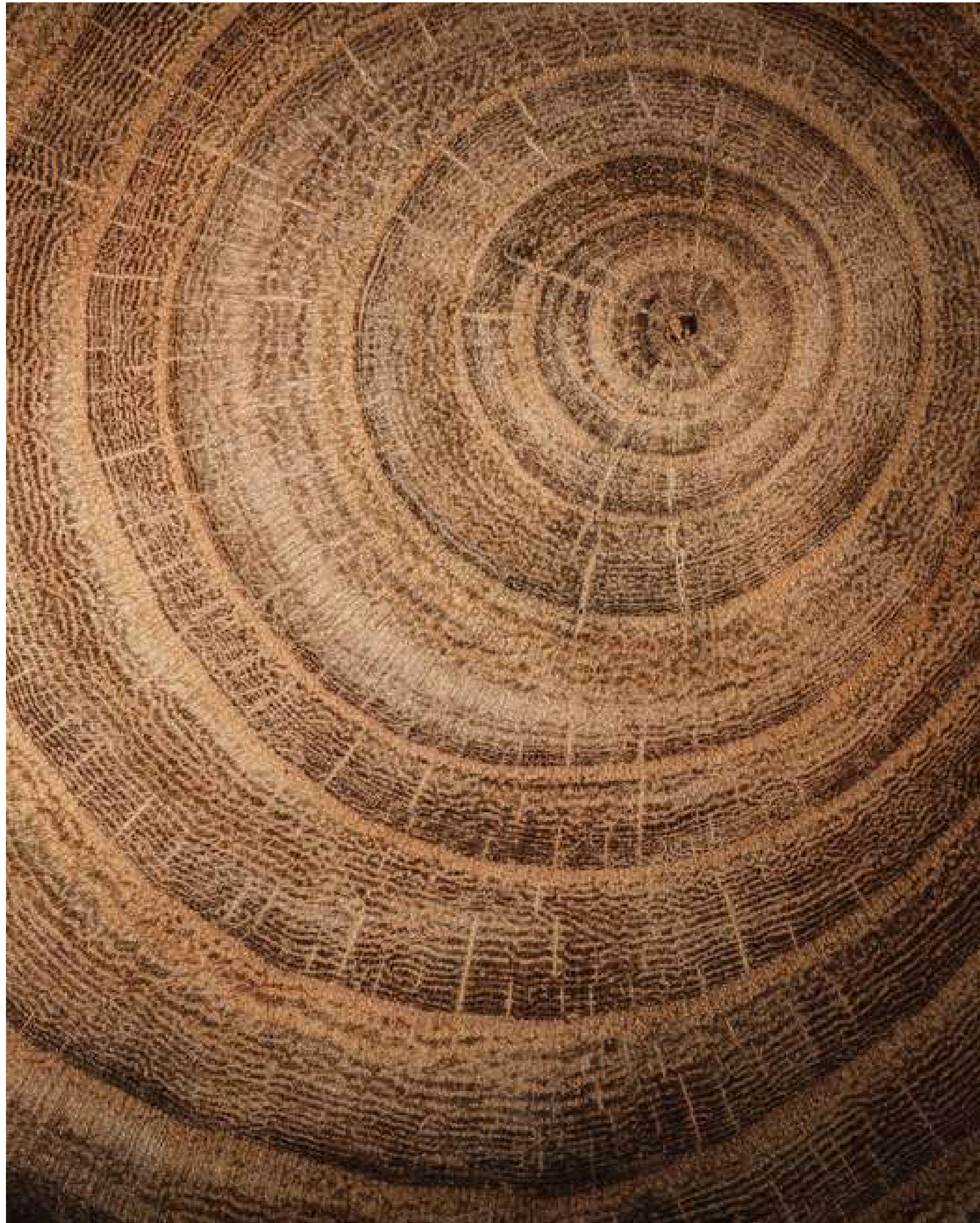




# Tury

tv holder

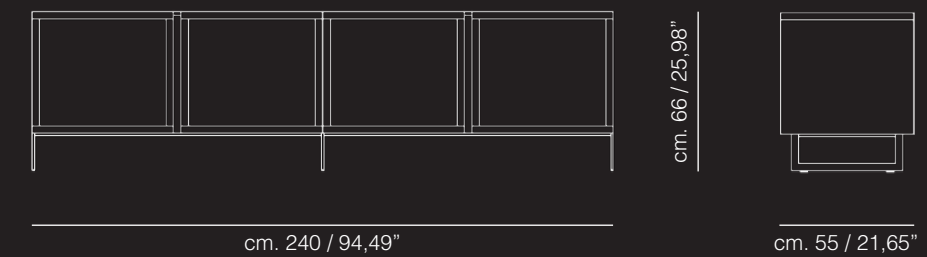




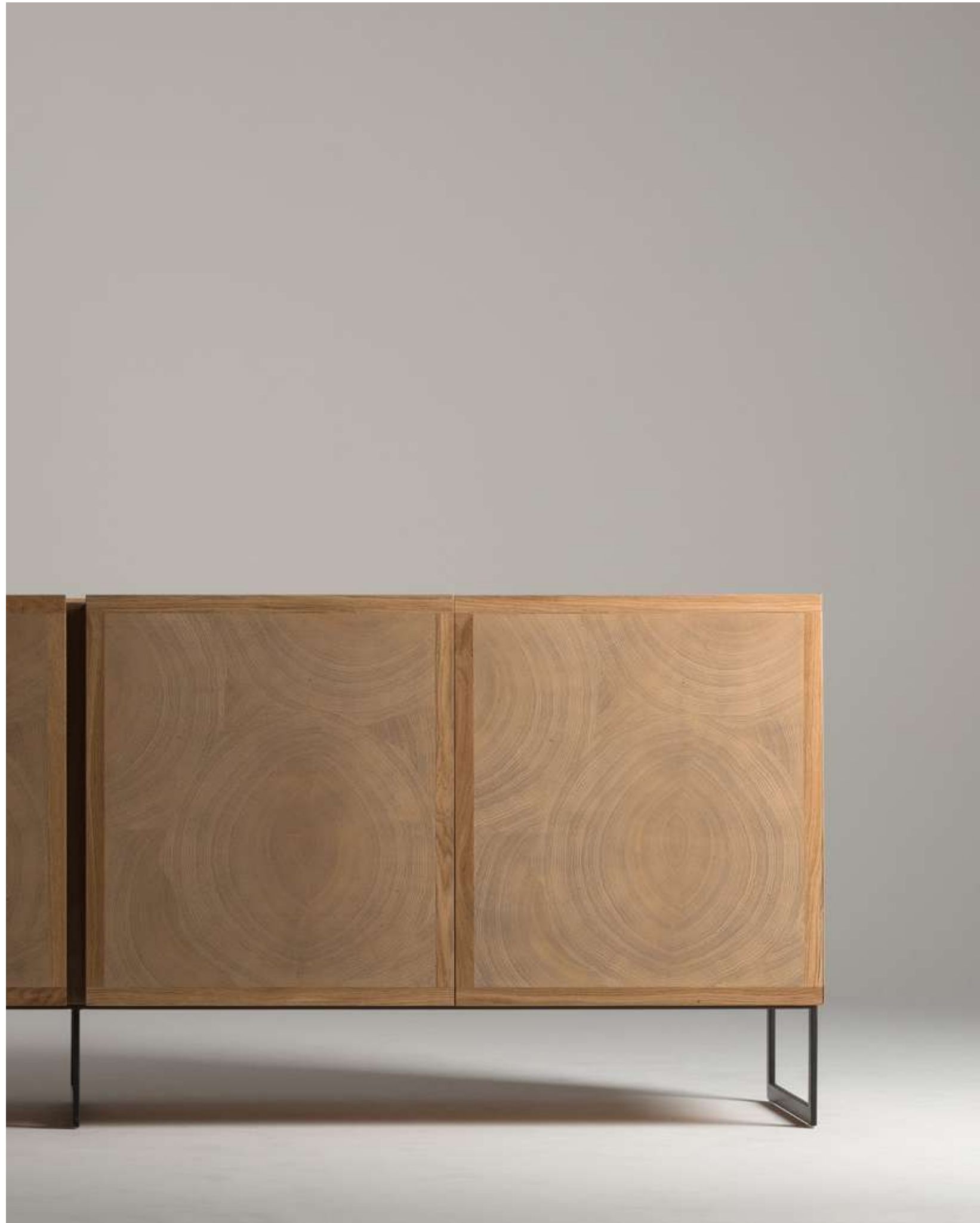
**Tury**  
tv holder

Mobile tv dal profilo lineare, dal carattere naturale e sobrio ma allo stesso tempo dotato di notevole impatto. Grazie alla particolare e innovativa impiallacciatura, il legno diviene protagonista ed il motivo decorativo sulle ante è reso dalla sezione trasversale del tronco, un'esaltazione della natura. Il top in cemento porcellanato si sposa perfettamente con il concetto di essenzialità dell'oggetto.

*TV holder cabinet with a linear profile and a natural, sober look, at the same time endowed with considerable impact thanks to the unusual innovative veneer finish where the decorative pattern of the wooden doors becomes the protagonist due to the transversal cut of the tree trunk, a sheer exaltation of nature. The porcelain concrete top blends in perfectly with the essential concept of the design.*



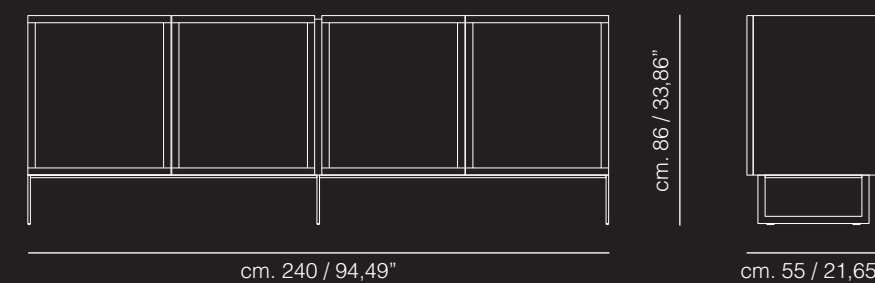


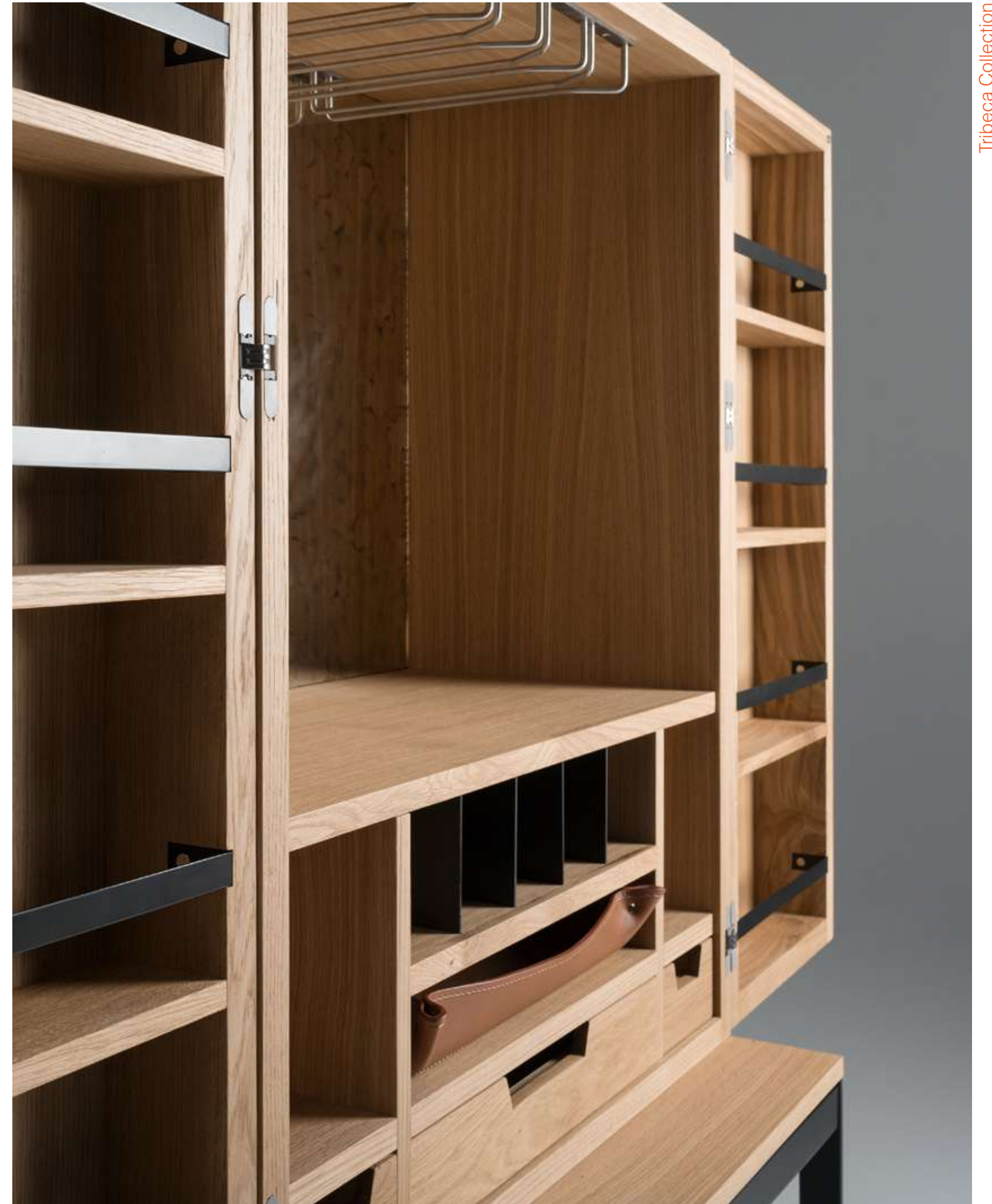


**Tury**  
buffet

Mobile buffet dal profilo lineare, dal carattere naturale e sobrio ma allo stesso tempo dotato di notevole impatto. Grazie alla particolare e innovativa impiallacciatura, il legno diviene protagonista ed il motivo decorativo sulle ante è reso dalla sezione trasversale del tronco, un'esaltazione della natura. Il top in cemento porcellanato si sposa perfettamente con il concetto di essenzialità dell'oggetto.

*Buffet cabinet with a linear profile and a natural, sober look, at the same time endowed with considerable impact thanks to the unusual innovative veneer finish where the decorative pattern of the wooden doors becomes the protagonist due to the transversal cut of the tree trunk, a sheer exaltation of nature. The porcelain concrete top blends in perfectly with the essential concept of the design.*







**Tury**  
bar

Mobile bar dal profilo lineare e dal carattere sobrio. Grazie alla particolare e innovativa impiallacciatura, il legno diviene protagonista così come il motivo decorativo sulle ante. Gli interni sono studiati nel dettaglio, con ripiani in legno e rifiniture in acciaio nero micaceo a richiamare il basamento, ulteriormente impreziositi da uno specchio antico Vienna, che riflette e moltiplica lo spazio.

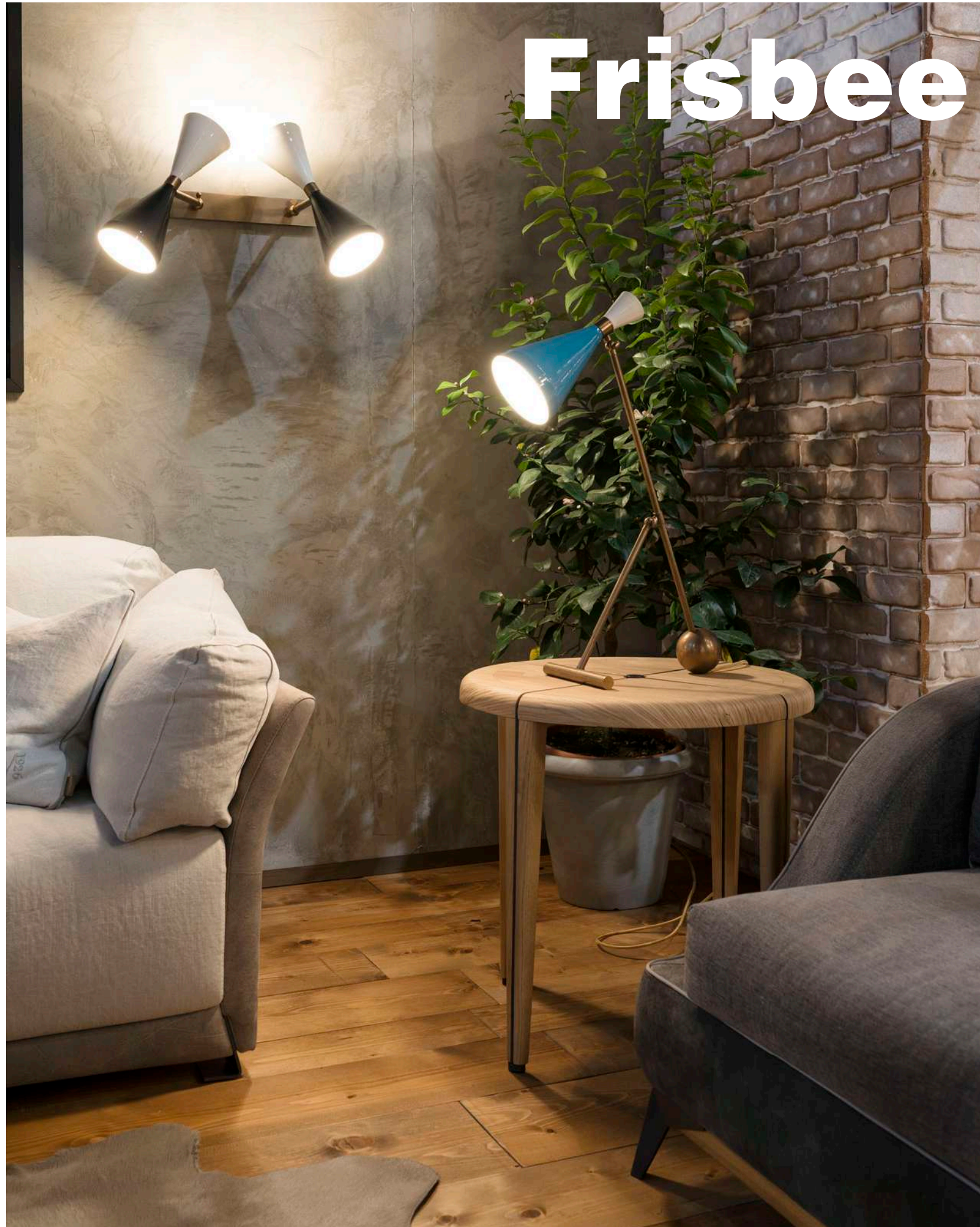
*Bar cabinet with a linear and sober look and feel. The decorative pattern of the wooden doors becomes the protagonist due to the transversal cut of the tree trunk. The inside fittings, which are studied in the finest detail with wooden shelving and finishes in micaceous black steel, are further enhanced by the antique Viennese mirror at the back that reflects and multiplies the spatial effect.*



cm. 90 / 35,43"

cm. 50 / 19,69"

# Frisbee



## Tribeca

Loft Philosophy

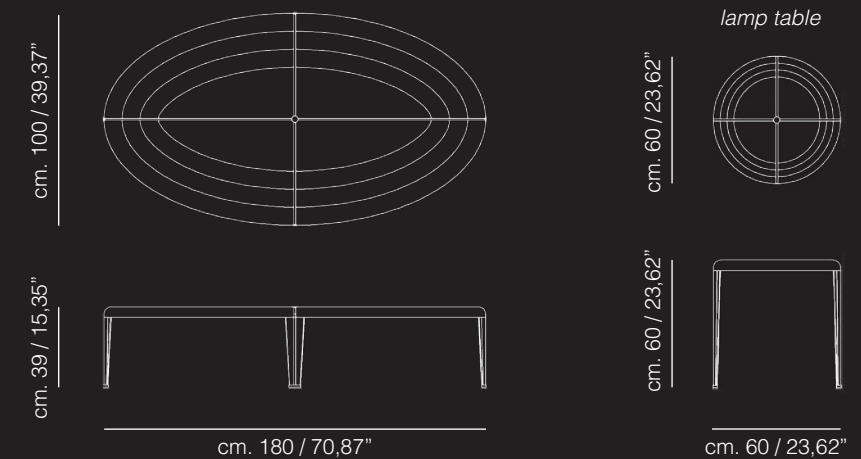


### Frisbee

coffee table

Melodiosi intarsi di legno sul piano poggiato su una struttura in acciaio nero micaceo. Materiali pregiati, lavorati con la sapienza dei maestri ebanisti toscani. Rievocazioni di segni puri che racchiudono un'anima semplice e passionale.

*Melodious wooden inlays enhance the top resting on a micaceous black steel frame. Precious materials crafted with the skill of the master Tuscan cabinetmakers. A re-enactment of the pure symbols that enclose a simple yet passionate soul.*



# Kaki



**Tribeca**  
Loft Philosophy

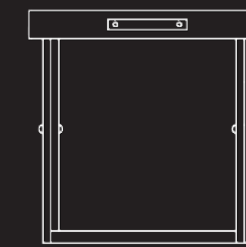


## Kaki

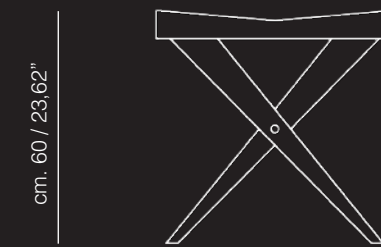
side table

Tavolo portaoggetti divertente e gradevole. La sua forma originale si adatta in qualsiasi ambiente. Il piano è realizzato in vero cuoio ed il basamento in faggio tinto noce è arricchito da preziosi dettagli in ottone brunito.

*An amusing and appealing side table. Thanks to its original shape it adapts to any environment. The top is in real leather and the base which is in walnut-stained beech wood is enhanced with precious burnished brass details.*



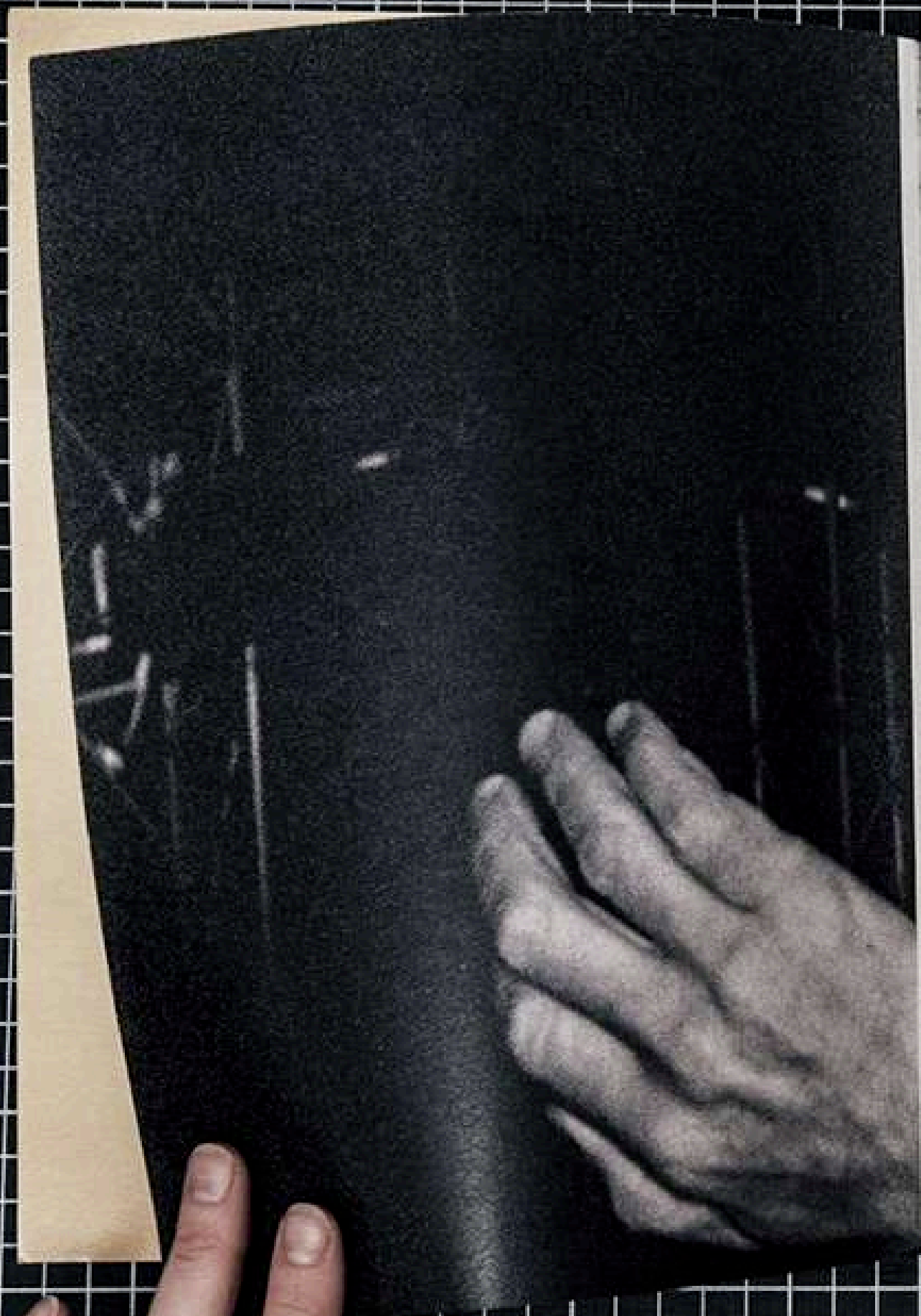
cm. 60 / 23,62"



cm. 60 / 23,62"



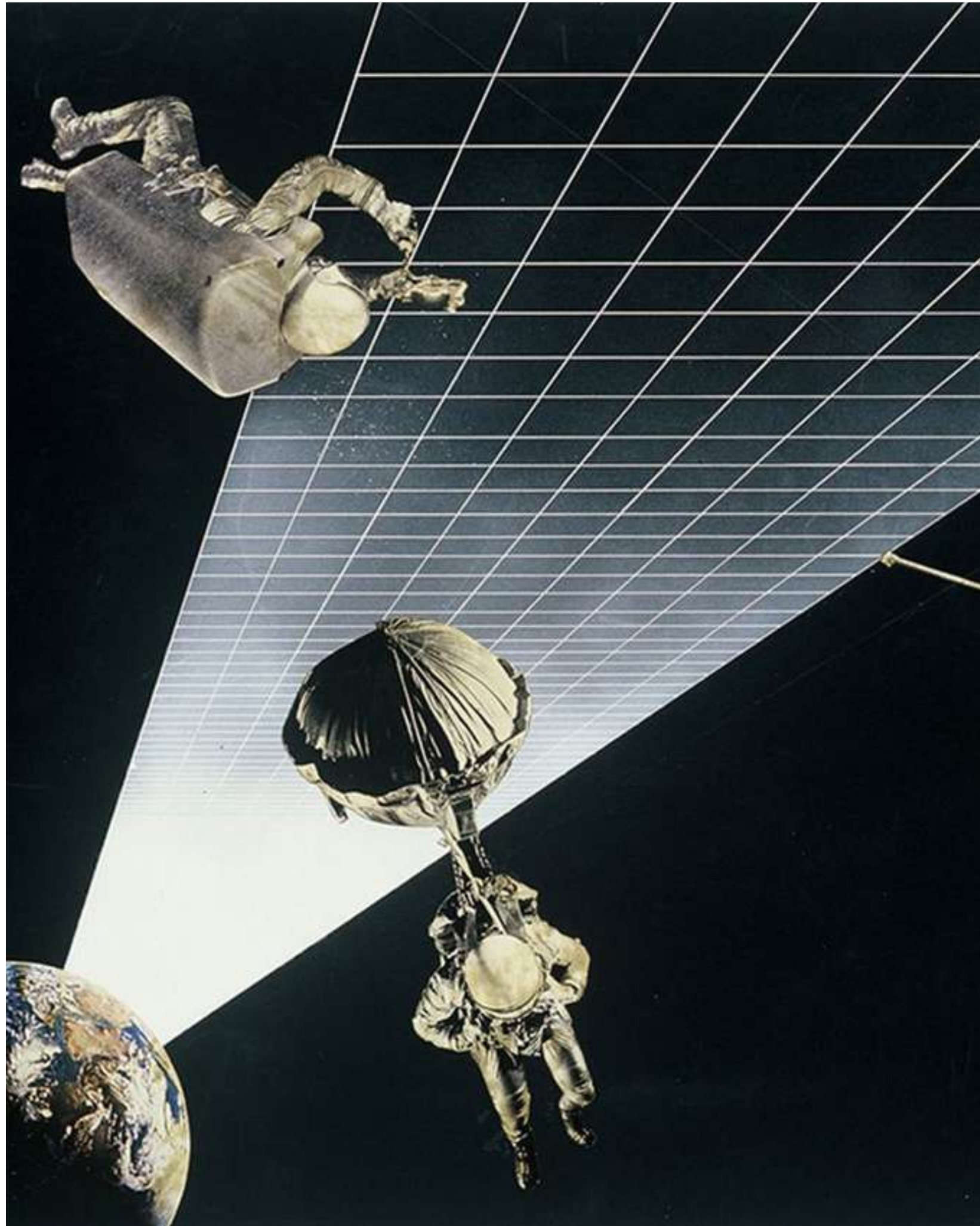
**M**<sup>1926</sup>  
MANTELLASSI  
**Tribeca**  
Loft Philosophy



# Pappagalle



See you next time  
TOUR MAGAZINE



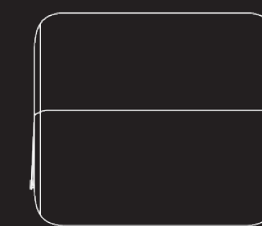




**Pappagalle**  
bed chair

Dagli spettacolari anni 70, torna una riproduzione aggiornata e "ringiovanita" di poltrona vivace e frizzante, che fu disegnata da un famosissimo architetto del tempo. Oggi ritorna come best seller, rivista e riprogettata secondo le attuali tecnologie e materiali innovativi. Una poltrona ingegnosa che, all'occorrenza, può trasformarsi in un comodissimo letto.

*From the spectacular 1970s, an updated and "rejuvenated" version of a lively and intriguing armchair that was designed by a famous architect of that era. It now makes its comeback as a bestseller, revamped and redesigned according to current technologies and today's innovative materials. An ingenious armchair, which as required, can be transformed into a very comfortable bed.*



cm. 83 / 32,68"

cm. 67 / 26,38"



cm. 106 / 41,73"

# Fonzie

sofa





*“I’M NOT THE DREAMER, I’M THE DREAMEE!”*

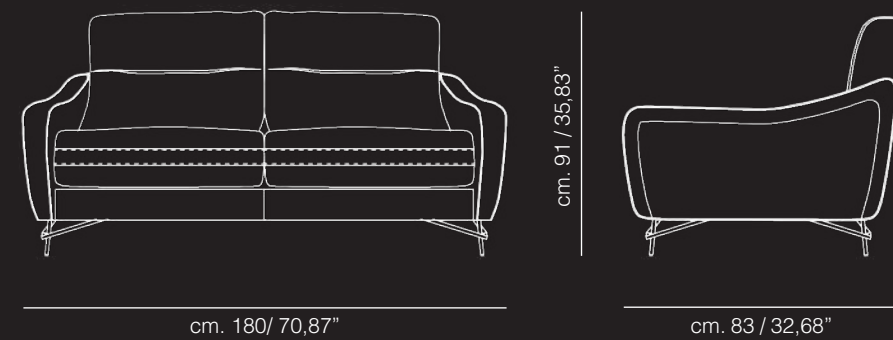
*THE FONZ*



**Fonzie**  
sofa

Serie di divani e poltrone adatti a fornire il massimo comfort in living di dimensioni ridotte. La zampa alta dona un senso estetico e leggero. La forma sinuosa del bracciolo ricorda vagamente le nostre collezioni degli anni '70 e crea un gradevole effetto memoria.

*Collection of sofas and armchairs suitable for providing the maximum comfort in reduced dimensions living areas. The high legs give a light aesthetic mood. The sinuous shape of the armrest vaguely recalls our 70's collections and creates a pleasant memory effect.*



\* available in different sizes

# Rocco

sofa

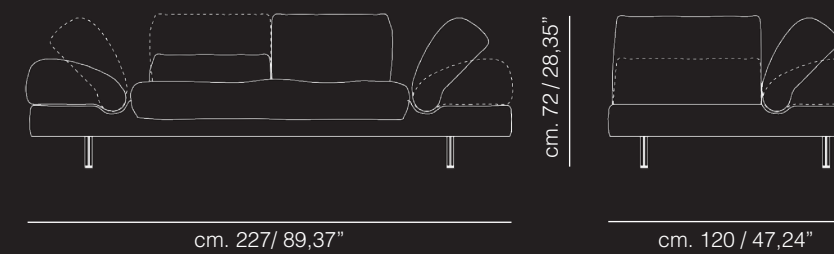




**Rocco**  
sofa

Divano componibile che consente usi differenti, garantendo grande comfort per ogni funzione. Ideale per ospitare molte persone, malleabile e adattabile ad ogni desiderio. Elementi chiave sono le unità mobili, regolabili a piacere e separatamente, i quali servono da bracciolo e spalliera. Zampa alta per un concetto contemporaneo, sia in chiave industrial che moderna.

*A sectional sofa allows the maximum comfort in multiple positions for a single individual or for several people at the same time. Malleable, adaptable to the wishes of the user. The key element is a "smart cushion" that serves as the armrest and backrest, freely adjustable and separately. High metal legs for a contemporary or industrial look.*



\* available in different sizes



M<sup>1926</sup>  
MANTELLASSI  
**Tribeca**  
Loft Philosophy

# Strike

sofa





# Tribeca

Loft Philosophy

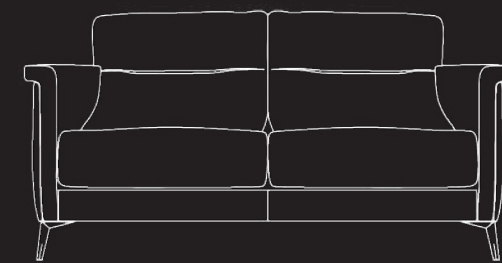


## Strike

sofa

La prova che il comfort può essere ottenuto in prodotti dalle dimensioni esterne contenute. Divani di diverse larghezze e poltrona abbinata. La serie strike esprime modernità ed un industrial look molto originale.

*The proof that comfort can be obtained in products with reduced external dimensions. Sofas of different length and matching armchair. The Strike series expresses modernity and an original industrial look and feel.*



cm. 180 / 70,87"



cm. 83 / 32,68"

cm. 91 / 35,83"

\* available in different sizes

# Italo

sofa







**Italo**  
sofa

Attualissimo e confortevole divano completamente rivestito in lino naturale. Le linee morbide rendono questo oggetto adatto ad ogni ambientazione. Il comfort è garantito dalla spalliera regolabile grazie ad un rullo posteriore, poggiato sullo schienale. Le zampe sono in faggio tinto rovere.

*A very modern and comfortable sofa fully covered in natural linen. The soft and caressing lines make this suitable for any setting. Comfort is guaranteed by the backrest that can be adjusted thanks to a rear roller, resting on the back. The legs are in oak-stained beech.*



\* available in different sizes

# Lazy

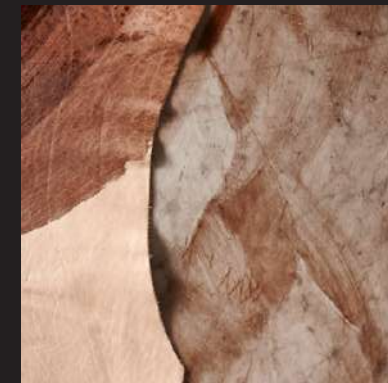
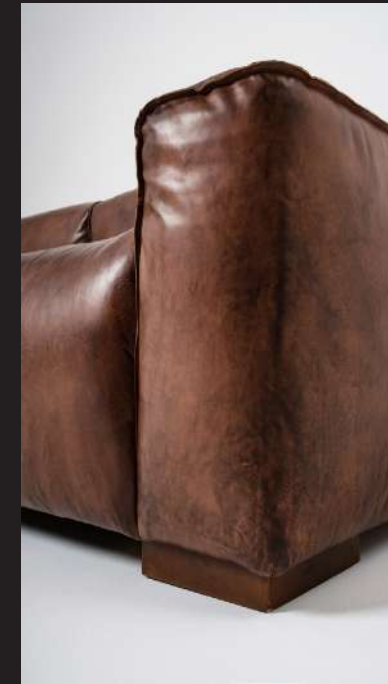
sofa





# Lazy

sofa

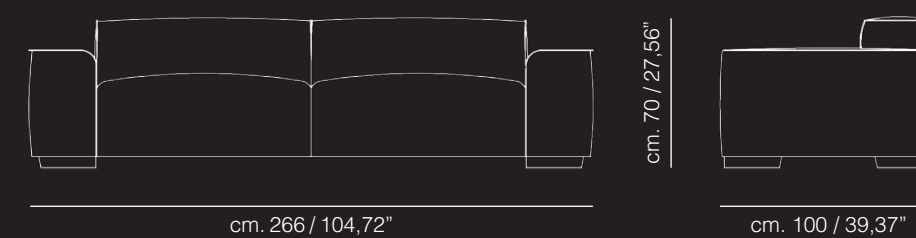




**Lazy**  
sofa

Essenziale ed elegante divano in pelle vintage. Le cuciture a taglio vivo disegnano la rigorosa silhouette, determinando precisa coerenza tra bellezza, semplicità e solidità. Le zampe sono squadrate, in faggio tinto noce.

*An essential, elegant sofa in vintage leather. The raw-edge seams trace the rigorous contours, giving rise to a meticulous consistency between beauty, simplicity and solidity. The square legs are in walnut-stained beech.*



\* available in different sizes

# Sandy

sofa





**Sandy**  
sofa

L'essenzialità e la pulizia delle forme è inversamente proporzionale alla comodità della seduta in piuma che rende questo divano così accogliente e confortevole. La zampa in rovere è sabbiata al naturale.

*The simplicity and the cleanness of the shapes are inversely proportional to the comfort of the foam seat that makes this sofa so cozy and comfortable. The legs are in sandblasted natural oak.*



\* available in different sizes



M<sup>1926</sup>  
MANTELLASSI  
**Tribeca**  
Loft Philosophy



# Baruffa

bed





# Tribeca

Loft Philosophy

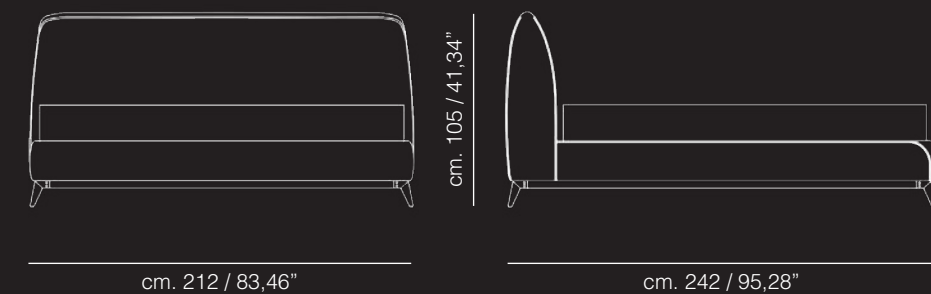


## Baruffa

bed

Rivestimento del letto in pregiata pelle anticata, rifinita con preziosa cucitura a contrasto, a definire le forme semplici e raffinate. Il sommier, sapientemente arricchito da una divertente cucitura decorativa, si appoggia su una base in legno naturale con zampe in ottone brunito.

*This bed is lined in the finest antiqued leather and finished with precious contrast stitching that defines its simple yet refined shapes. The mattress support, expertly enhanced with amusing decorative stitching, rests on a natural wood base with burnished brass feet.*



\* available in different sizes

# Placido

bed



**Tribeca**  
Loft Philosophy

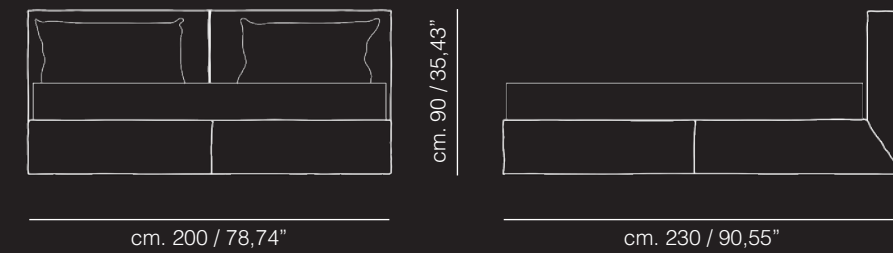


## Placido

bed

Letto dalle linee rigorose e geometriche, caratterizzato da una testiera suddivisa al centro. La testiera letto si connette al sommier con un preciso taglio a 45 gradi.

*Bed with rigorous and geometric lines, it is characterized by a headboard divided in the centre. The headboard connects to the sommier with a precise 45-degree angle cut.*

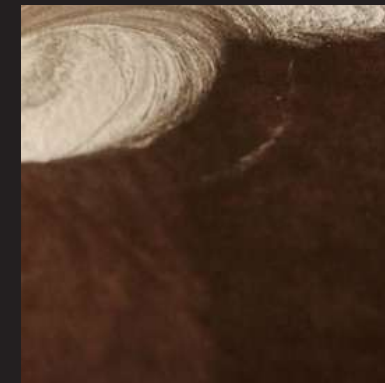
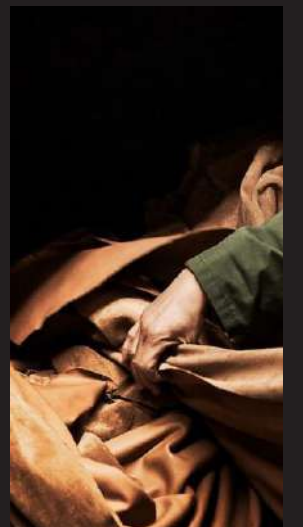


\* available in different sizes



# Couch

sofa



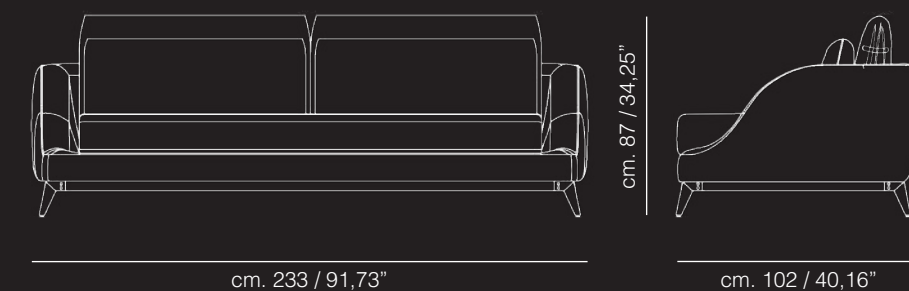




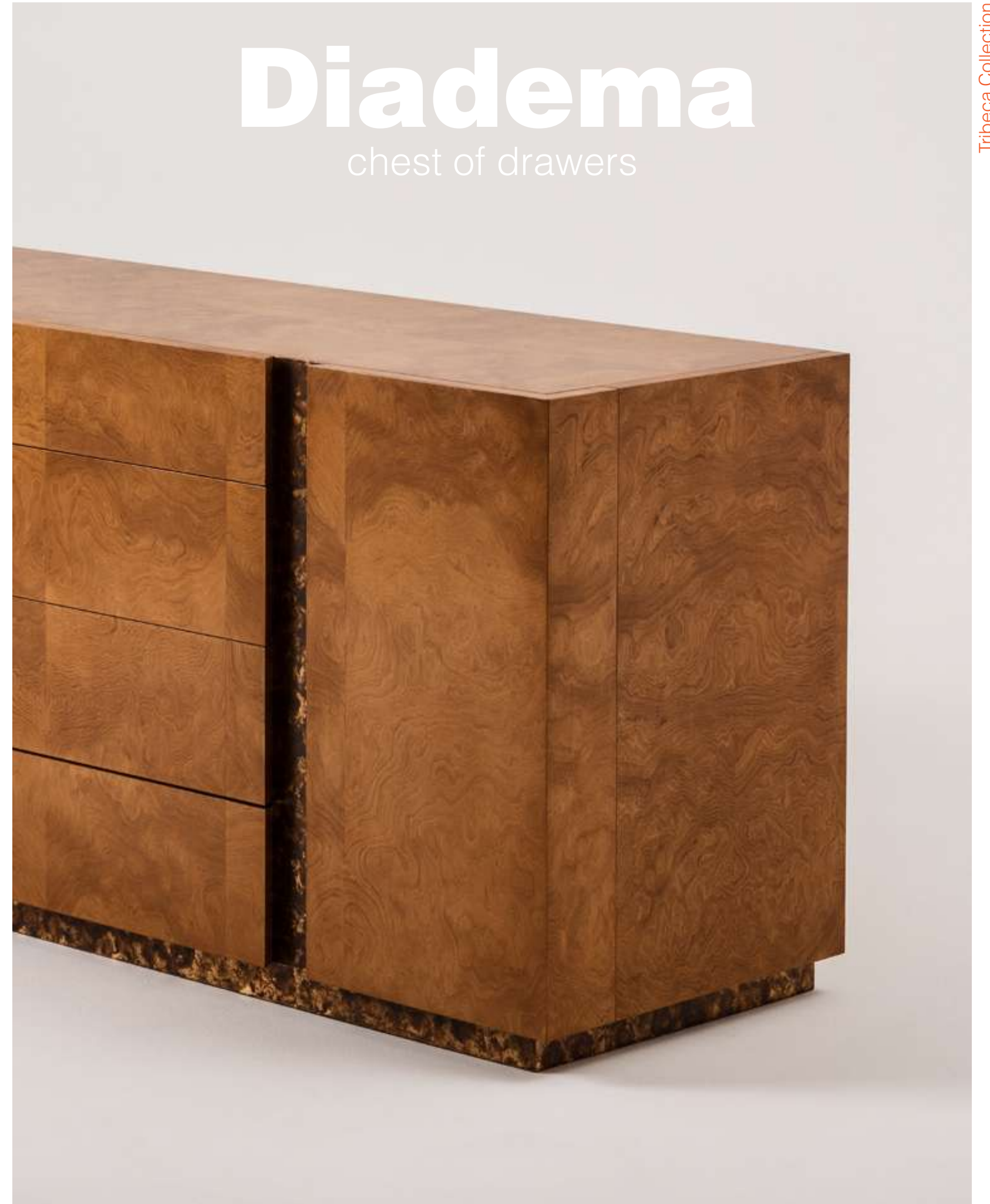
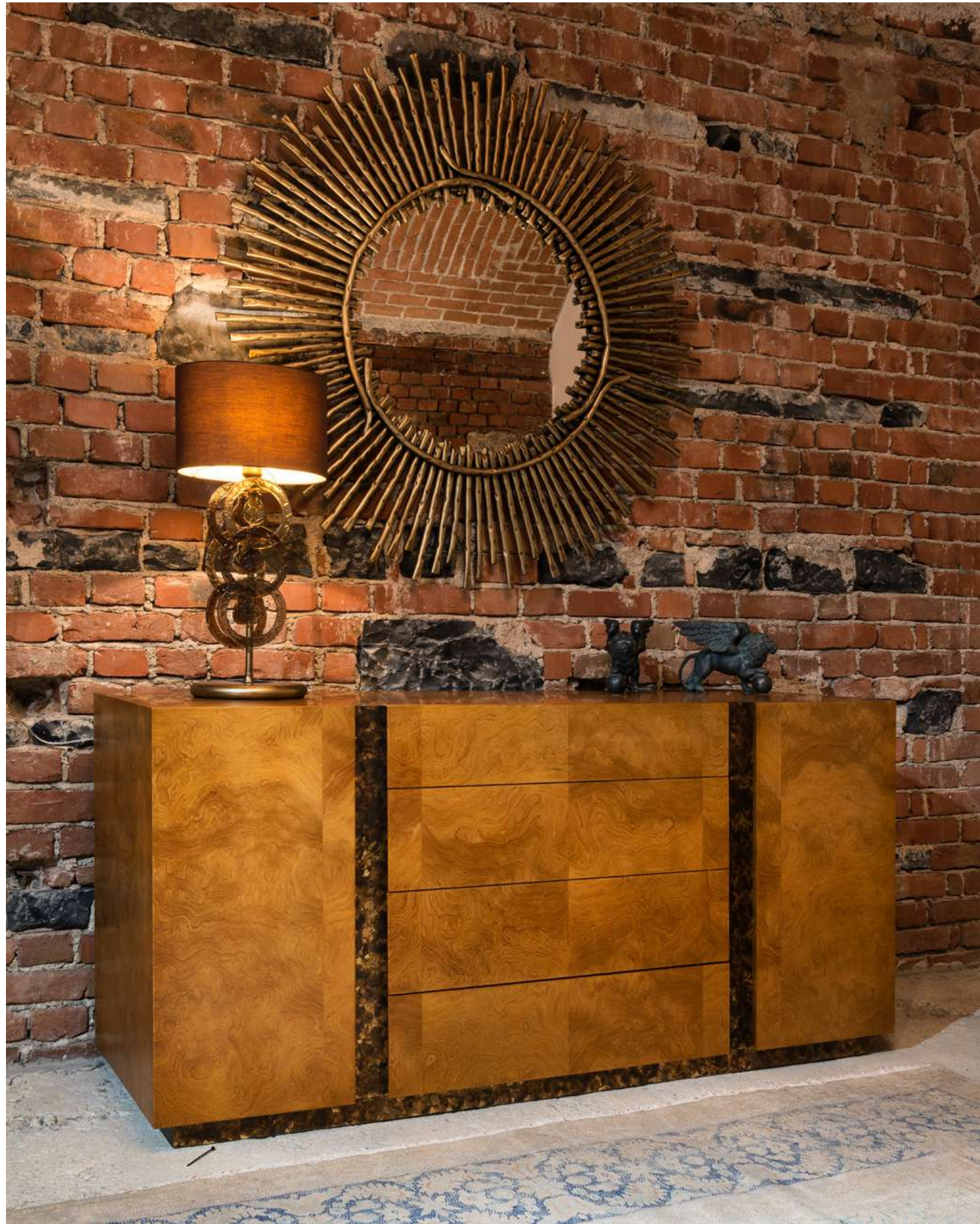
**Couch**  
sofa

Forma ricercata e signorile per questo moderno divano. Rivestimento in preziosa pelle anticata sulla scocca, con bordino di rifinitura in gros grain a definire l'armonia delle forme. Le sedute e i cuscini poggianti in tessuto tipo jeans, sono posati su una spalliera in tessuto di cotone trapuntato a rombi. Base in rovere sabbato naturale e zampe in acciaio scuro micaceo.

*This sofa has a refined and elegant shape. The frame is upholstered in precious antiqued leather with grosgrain trim defining the harmony of the contours. The seat and lumbar cushions are in jeans-type fabric resting against the backrest in diamond-quilted cotton fabric. The base is in sandblasted natural oak, the legs in dark micaceous steel.*



\* available in different sizes



# Diadema

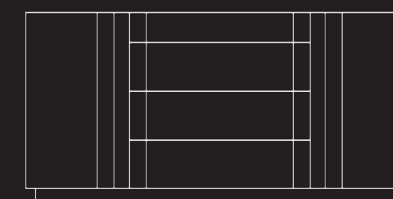
chest of drawers



**Diadema**  
chest of drawers

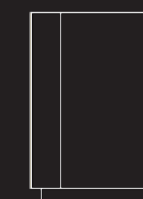
Serie composta da cassettone, toilette e comodino rivestiti in radica di frassino e acciaio in foglia oro trattata con ossido. Design essenziale, con dettagli preziosi ovunque; dall'interno dei cassetti rivestiti in canvas, alle guide soft touch, alla radica sapientemente applicata a disegno baciato. Le maniglie sono ricavate dalla lavorazione del legno, pura esaltazione della pulizia del design.

*A collection composed by the chest of drawers, toilets and bedside units, coated in ash brier and oxidated gold leaf steel. Essential design with precious details everywhere: from within the canvas-coated drawers to the soft-touch guides, to the wisely applied brier. The handles come from the wood processing, to exalt the purity of the design.*



cm. 160 / 63"

cm. 77 / 30,32"



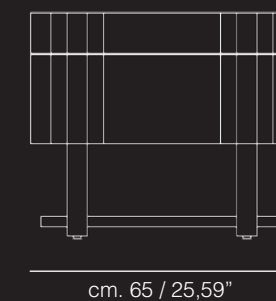
cm. 55 / 21,65"



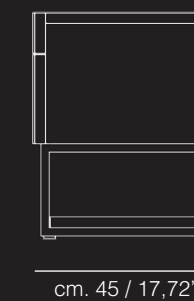
**Diadema**  
bedside table

Serie composta da cassettone, toilette e comodino rivestiti in radica di frassino e acciaio in foglia oro trattata con ossido. Design essenziale con preziosi dettagli come l'interno dei cassetti rivestiti in canvas, le guide soft touch e la radica sapientemente applicata a disegno baciato. Le maniglie sono ricavate dalla lavorazione del legno, esaltazione della pulizia del design.

*A collection composed by the chest of drawers, toilets and bedside units, coated in ash briar and oxidated gold leaf steel. Essential design with precious details everywhere: from within the canvas-coated drawers to the soft-touch guides, to the wisely applied briar. The handles come from the wood processing, to exalt the purity of the design.*



cm. 55 / 21,65"





# Agostina

armchair



**Agostina**  
armchair

Poltroncina rivestita in lana naturale con bordino a contrasto a definire l'armonia delle forme. La base è in rovere sabbato naturale con particolari in ottone brunito.

*Small armchair covered in natural wool with the contrasting border that defines the harmony of its lines. The base is in sandblasted natural oak with burnished brass trim.*



cm. 64 / 25,20"



cm. 76 / 29,92"

cm. 72 / 28,35"

**M**<sup>1926</sup>  
MANTELLASSI  
**Tribeca**  
Loft Philosophy



# Tipo

sofa





# Tribeca

Loft Philosophy

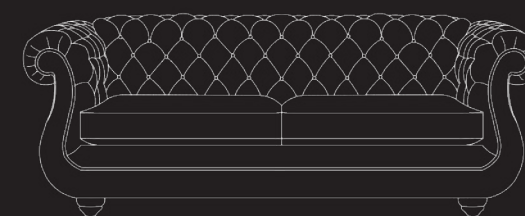


## Tipo

sofa

Modello dalle forme intramontabili concepito per rendere unico ogni ambiente. Il pregio dell'antica lavorazione capitonné è espressione di grande valore, destinata a rimanere nel tempo. La patinatura della pelle, completamente realizzata a mano, rendono questo prodotto un prezioso manufatto.

*A model with timeless shapes designed to make every room unique. The prestige of the ancient quilted upholstery craftsmanship is an expression of great value destined to remain over time. The finishing of the leather, carried out entirely by hand, makes this sofa extremely valuable.*



cm. 214 / 84,25"



cm. 78 / 30,71"

cm. 97 / 38,19"

\* available in different sizes

# Isidoro

sofa

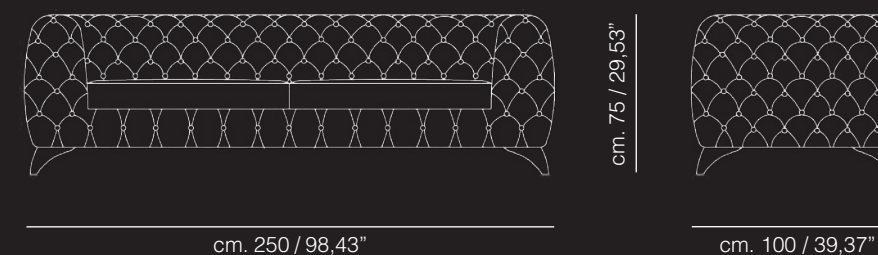




**Isidoro**  
sofa

Prestigioso divano in pelle vintage, realizzato con antica manifattura in capitonné. La sofisticata e preziosa lavorazione artigianale di questo oggetto lo rende adatto ad essere inserito come centrostanza, così da apprezzare la sua bellezza a 360°. Le zampe sono rivestite in pelle.

*A prestigious vintage leather sofa created according to the ancient quilted upholstery craftsmanship. The high-quality workmanship of this item make it suitable as the centrepiece of the room; its beauty deserves to be admired at 360°. The legs are covered with leather.*



\* available in different sizes

# Valzer

side table



**Tribeca**  
Loft Philosophy

Tribeca Collection

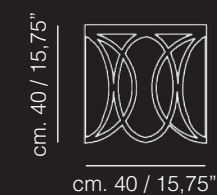
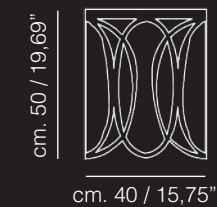


## Valzer

side table

Armonioso gioco di segni per questi tavolini dall'elegante basamento in ottone acidato; piano rivestito in pelle anticata.

*A harmonious play of symbols for these side tables with their elegant base in acid-etched brass and top covered in antiqued leather.*



\* available in different sizes



**N**<sup>1926</sup>  
**MANTELLASSI**  
**Tribeca**  
 Loft Philosophy



# Vertigo

dining table

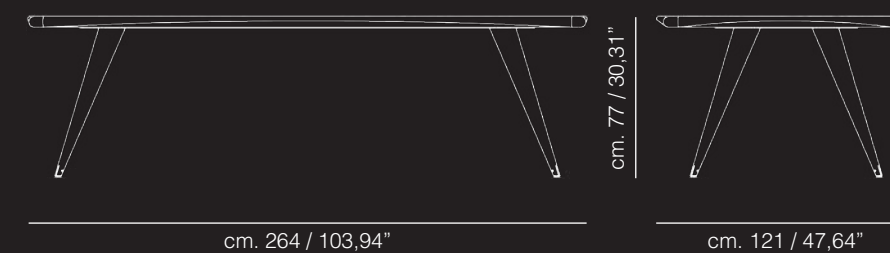




**Vertigo**  
dining table

La ricerca della sinuosità e del movimento sono l'origine del profilo flessuoso, quasi elastico del tavolo. Gli appoggi del piano si aprono e si proiettano verso l'esterno con la loro forma conica, semplice e decisa. La finitura naturale del legno e l'utilizzo del cemento porcellanato sul top descrivono l'oggetto in maniera essenziale e misurata.

*The quest for sinuosity and movement are at the basis of the flexible, almost elastic profile of this table. The supporting legs open at a slant projecting themselves outwards with their simple and decisive conical shape. The natural finish of the wood and the use of porcelain cement on the top distinguish this item in an essential and measured way.*



\* available in different sizes

# Jole

chair



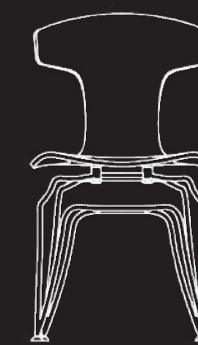


## Jole

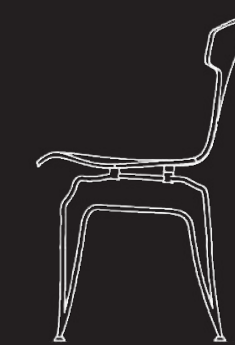
chair

Divertente e vivace, questa sedia rende unico ogni ambiente. Protagonista del nostro tempo, è realizzata in legno curvato sagomato. Rivestita in cuoio naturale o colorato, si appoggia su un innovativo basamento dal brioso design in acciaio nero micaceo.

*Entertaining and vivacious, this chair makes every room unique. A protagonist of our times, it is made in shaped, curved wood. Covered in either natural or coloured leather it rests on an innovative base with a young-hearted design in micaceous black steel.*



cm. 50 / 19,69"



cm. 57 / 22,44"

cm. 81 / 31,89"

# Meccanica

dining table





**Meccanica**  
dining table

Tavolo da pranzo realizzato completamente in acciaio. La particolarità della finitura acidata con un processo del tutto naturale, rende unico questo oggetto. Ogni pezzo risulta esclusivo e irripetibile.

*This dining table is made entirely of steel. The special feature of the acid-etched finish, thanks to a completely natural process, makes this item unique. Each piece is different and exclusive, offering the incomparable emotion of owning an unrepeatable object.*



# Meccanica

chair



**Tribeca**  
Loft Philosophy

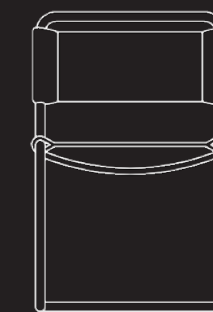


## Meccanica

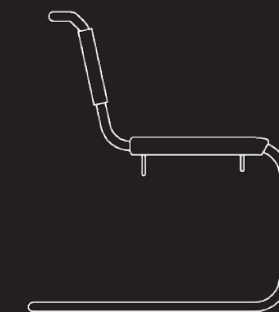
chair

Le linee leggere e semplici di questa seduta iconica a sbalzo vengono rieditate e reinterpretate con l'utilizzo di acidature sulla struttura metallica e pellami molto particolari, trasportando questo oggetto in una dimensione dal sapore vintage.

*The light, simple lines of this iconic cantilever seat are re-edited and reinterpreted via the use of acid-etching on the metallic structure and coverings in very special leather, thus projecting this item into a vintage-style dimension.*



cm. 49 / 19,29"



cm. 62 / 24,41"

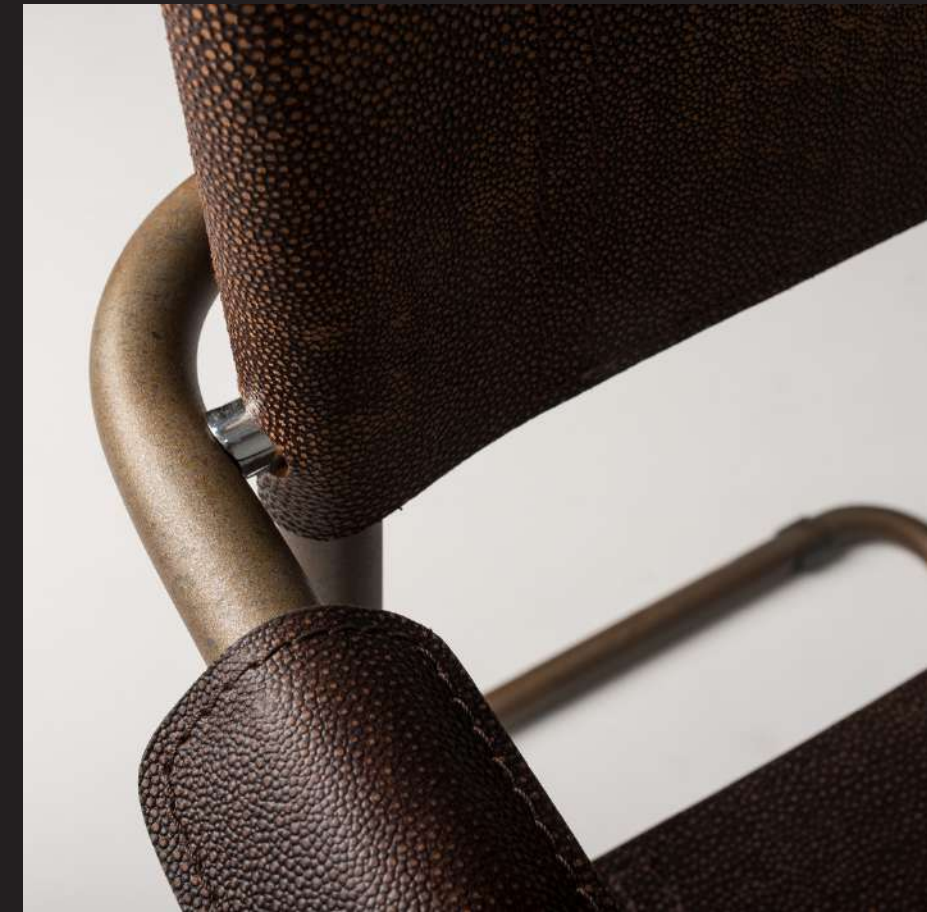
cm. 82,5 / 32,48"

# Meccanica

armchair



**Tribeca**  
Loft Philosophy



## Meccanica

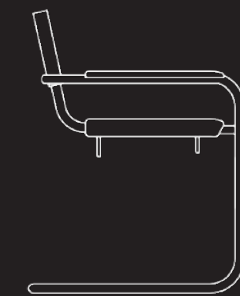
armchair

La struttura a sbalzo della poltrona comprende, in questa versione, il supporto dei braccioli per un comfort maggiore. Anche in questo caso è stata donata grande attenzione alle finiture acidate e alla pelle, la quale dona un aspetto dichiaratamente vintage al prodotto.

*This version of the cantilevered structure of the armchair includes the armrest supports for greater comfort. Also, in this case, it has been created with acid-etching and special finishes on the leather, endowing this chair with a decidedly vintage look.*



cm. 60 / 23,62"



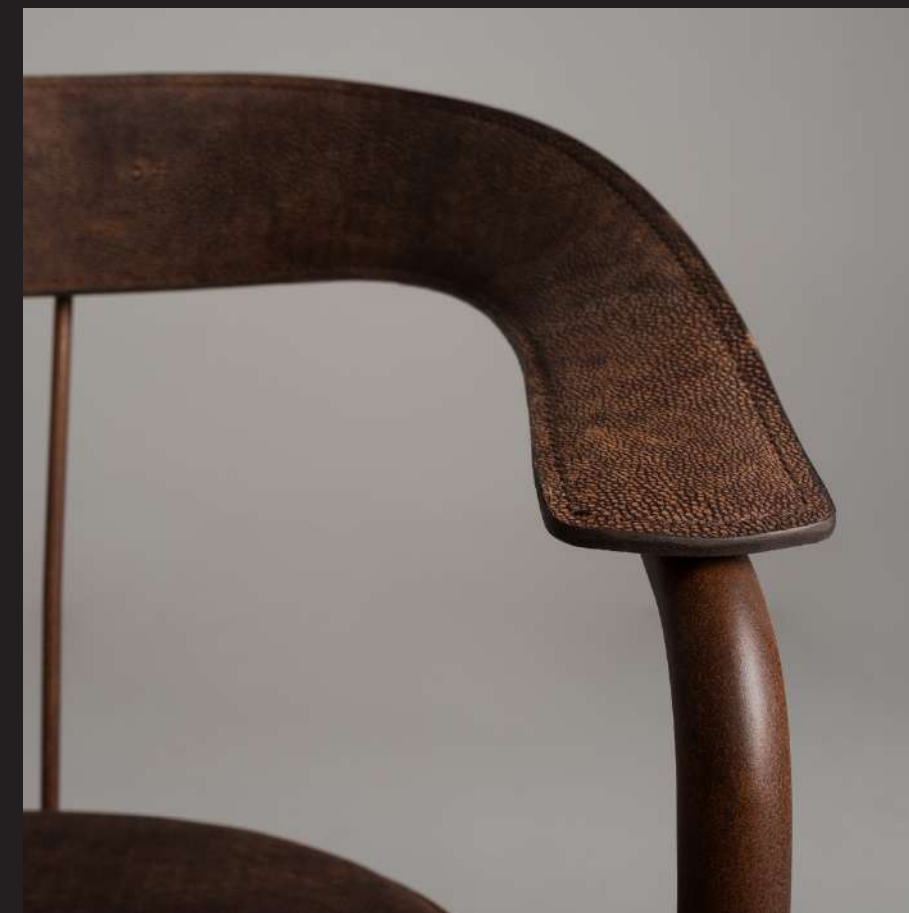
cm. 59 / 22,28"

cm. 80 / 31,50"

# Parabolica

chair



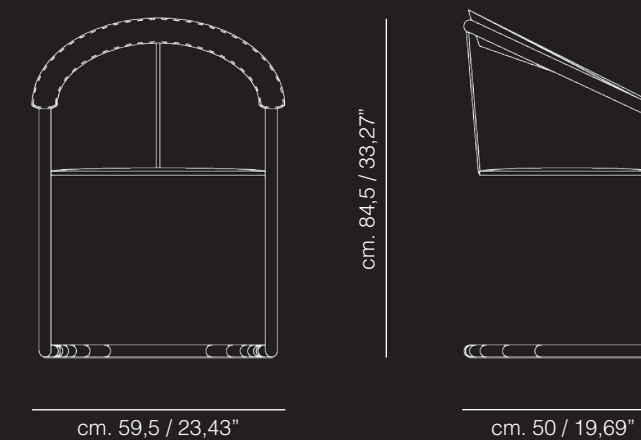


## Parabolica

chair

La spalliera in acciaio curvato rivestito in cuoio così intimamente avvolgente, viene sorretta dalla struttura a sbalzo in tubolare metallico acidato. Forma e rivestimento donano così a questa sedia uno stile tipicamente vintage.

*The curved steel backrest covered with warm, embracing leather is supported by the cantilever structure in acid-etched tubular metal that endows this chair with true vintage style.*



# Esse

armchair

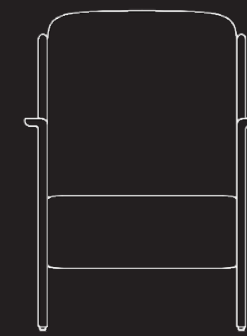


### Esse

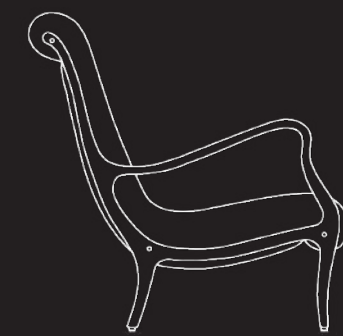
armchair

Il sottile bracciolo in faggio della poltrona, disegna una linea sinuosa che bilancia il corpo centrale più voluminoso. La morbida pelle e il sistema di molleggio interno garantiscono un comfort inconfondibilmente Mantellassi.

*The thin armrests of this armchair in beech wood draw a sinuous line that adds balance to the more voluminous central body. The soft leather and the internal suspension system guarantee the inimitable Mantellassi comfort.*



cm. 87 / 34,25"



cm. 62 / 24,41"



# Tribeca

Loft Philosophy

Home collection

**M**<sup>1926</sup>  
**MANTELLASSI**

Show room

Pistoia  
Shanghai  
Beijing  
Lagos  
Almaty  
Ashgabat  
Riyadh  
Istanbul  
Mosca  
Dubai  
Doha  
Taipei  
New York  
Los Angeles  
Miami

Follow us



[www.mantellassi.com](http://www.mantellassi.com)

Graphic Arch. Lorenzo Guidi  
Photo [davide.dainelli@gmail.com](mailto:davide.dainelli@gmail.com)

Copyright Mantellassi 1926

**N** 1926

MANTELLASSI