

**N** 1926

MANTELLASSI

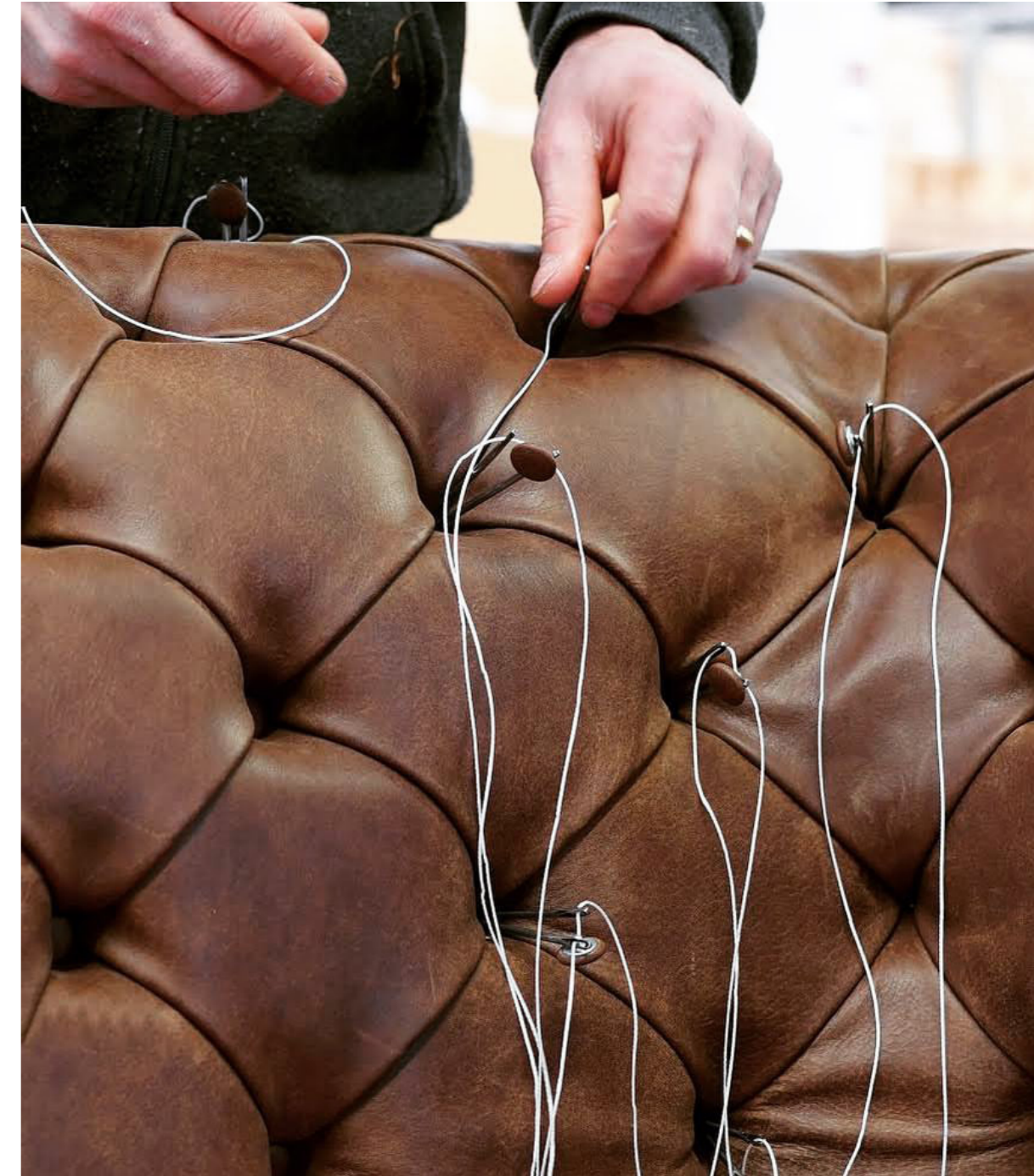
*“Whatever masterpiece will furnish your environment, it will be **the aurea, the essence and the soul** which will leave a mark in your life, with unrepeatable, unique, **special moments.**”*

♦ *Without history  
there is no identity*

Mantellassi knows it very well. It is an extremely dynamic Tuscan company that has been able to face with determination the challenges of the market and globalization, anchoring itself even more firmly to the cultural roots of its social, cultural and artistic context, to assume a role of Italian design ambassador in the world.

The Mantellassi adventure began in 1926 and continues, generation after generation, until today.

The upholsterer Macario Mantellassi, together with his son Remo and his wife Elisa, founded in a small village of farmers become artisans, in Pistoia, the company Mantellassi specialized in the production of furnitures and furnishings. The company has grown a lot over the years but without ever leaving behind the passion for the artisan tradition that distinguishes Mantellassi since the beginning. It is thanks to the care, passion and enthusiasm for our work that during the years we created products of an excellent quality, entirely **Made in Italy** and with a completely internalized production.



## ♦ *The company today and our Showroom*

Today the company is run by Nicola Remo Mantellassi, fourth generation, his wife Roberta and their sons: the twins Marco and Giulio and the youngest Carlo.

They work together with a group of collaborators motivated to acquire increasing abilities in a world that no longer concerns only divans and armchairs but collections that include total look furnishings, already complete and selected.

Mantellassi's collections draw all the kind of livings, especially designed to be unique and reflect a simple way of living the luxury, yet so powerfully distinctive.

In the October of 2019, in the heart of the Pistoia territory, homeland of furniture and furnishings, we've inaugurated the new **Mantellassi's Showroom**, an exhibition space of over 1000 mt<sup>2</sup> where you can closely admire our innovative collections. We have decided to open our company's doors to the public, creating an exclusive space where we can make available to the private sector our experience in the design and implementation of high design custom furnishings.



## ◊ *Our styles and our collections*

The true strength of the company lies in its versatility and ability to face and overcome planetary challenges because it is always able to perceive weak signals, transforming them in answers that anticipate the competition.

For Mantelassi moving “**from the idea to realization is only a will’s affair**”.

Our mission from the beginning was (and still today is the same) to propose ourselves to the the designer’s world with an innovative profile, focusing on 3 architectural styes we like most:

### ◊ **COUTURE** *collection*

NEOCLASSICAL: classic and contemporary, two architectural styles distant in time and coming from two different worlds, meet to give life to a new architectural style, the neoclassical. From here arises our Couture collection.

### ◊ **COSMOPOLITAN** *collection*

CONTEMPORARY/ COSMOPOLITA: a revised and correct déco, which interprets luxury in its most current meanings leading it towards a contemporary maximalist. From here arises our Cosmopolitan collection.

### ◊ **TRIBECA** *collection*

INDUSTRIAL: it is characterized by a particular design, based on clean and clean lines: in this way the furniture is functional; they are equipped with a robust simplicity and grunge charm that allows them to be inserted in any environment. From here arises our Tribeca collection.

◆ **COUTURE**  
*collection*

With the Couture Collection Mantellassi carries out a real “new interpretation” of the nineteenth-century palaces, their furnishings and their architecture. Modern reinterpretations of furniture from the past, classic furnishings readapted to contemporary homes, risky fusions that give pleasant surprises. Classic and contemporary, two architectural styles distant in time and coming from two different worlds, meet and give life to a new architectural style.



## ◆ COSMOPOLITAN *collection*

The Cosmopolitan Collection, presented during Fuorisalone 2021 in Milan, opens 360° degrees to the world, recalling the architecture of the major world metropolises: New York, London, Moscow, Honk Kong, Dubai and many others. Penthouses that allow you to have a look on the breathtaking skyline. Both in the objects and in the finishing touches, in modern and semi-gloss colors, Cosmopolitan reveals a great attention to manufacture and care of details, the result of an extreme manufacturing preciousness. A collection which proposes a Contemporary and Cosmopolitan style, a revisited and corrected Deco, which interprets luxury in its most current meanings bringing it towards a maximalist contemporary.



◆ **TRIBECA**  
*collection*

Designed by the architects Marco and Giulio Mantellassi, the Tribeca Collection celebrates our passion for interior design and handcraft. An authentic, high-quality and vintage-style furniture, completely handmade using the best materials: special woods such as oak and pine combined with natural upholstery like buffalo leather and pure linen. The result is a collection of luxury armchairs and sofas but with a modern, fresh and captivating design: every item embellishes the space giving timeless elegance and unique character. Perfect expression of the industrial style, the Tribeca Collection speaks of history, awakes the memory of the building and explains the relationship between space and the people who worked on it.



◆ *Projects around the world:*

Miramare Hotel  
(Corfu, Greece)



◆ *Projects around the world:*

Miramare Hotel  
(Corfu, Greece)

Flying Dagger interior  
(Rossina VI)



◆ *Projects around the world:*

Hotel Miramare  
(Corfù, Grecia)

Flying Dagger interior  
(Rossina VI)

Demeure Hotel  
(Corsica, France)



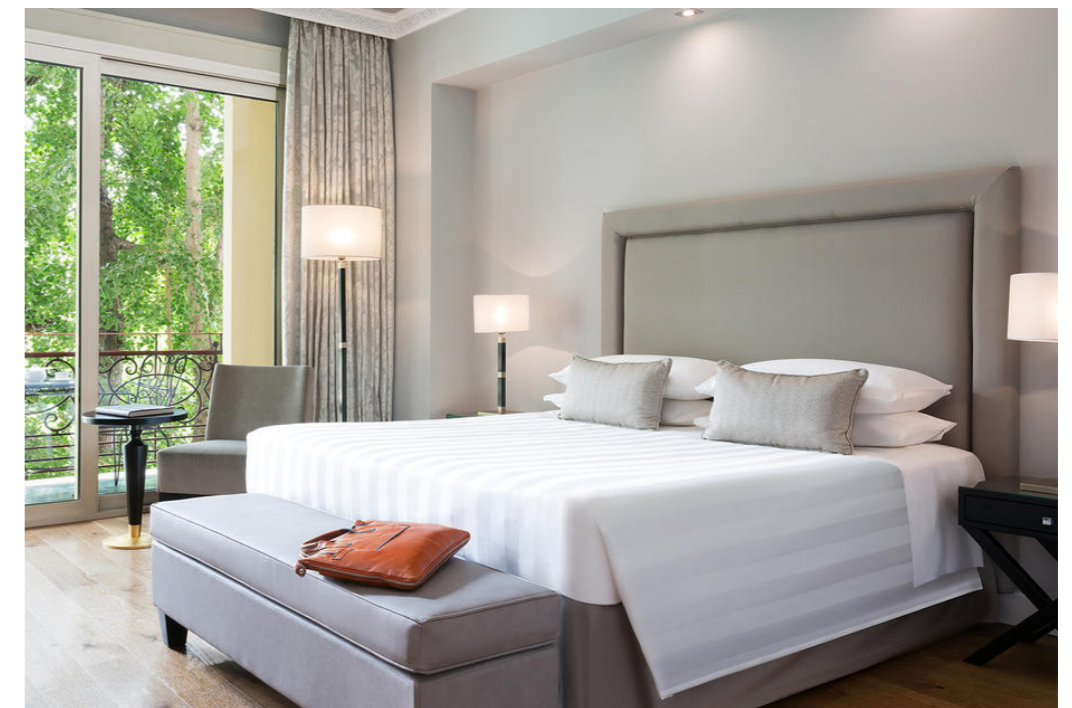
◆ *Projects around the world:*

Hotel Miramare  
(Corfù, Grecia)

Flying Dagger interior  
(Rossina VI)

Demeure Hotel  
(Corsica, France)

Hotel Villa Medici  
(Florence, Italy)



◆ *Projects around the world:*

Hotel Miramare  
(Corfù, Grecia)

Flying Dagger interior  
(Rossina VI)

Demeure Hotel  
(Corsica, France)

Hotel Villa Medici  
(Florence, Italy)

Re Nudo - Sahrai Shop  
(Milan, Italy)



◆ *Special collaborations:*  
*“DEVILS” Sky TV series*

Mantellassi is proud to have contributed to the production of the scenographies of the Sky TV series “DEVILS” based on the best seller by Guido Maria Brera, supplying part of the furnishings. The furnishings are unique pieces as requested by Monica Vittucci, set designer of the series.

The furnishings previewed in “Diavoli” are part of our COSMPOLITAN collection and have some Couture influences.

34 luxury furnishings shine in the main villa in which a story of finance, power and disillusionment is set.

There is a stellar cast composed of Alessandro Borghi, Patrick Dempsey, Kasia Smutniak and others.

The furnishings were defined as “perfect” by Laura Fiorucci of Lux Vide (the company that produced the series) and they improved the whole scenography.



# The culture of the project

In all its aspects, the culture of design is the central pivot around which Mantellassi 1926 revolves.

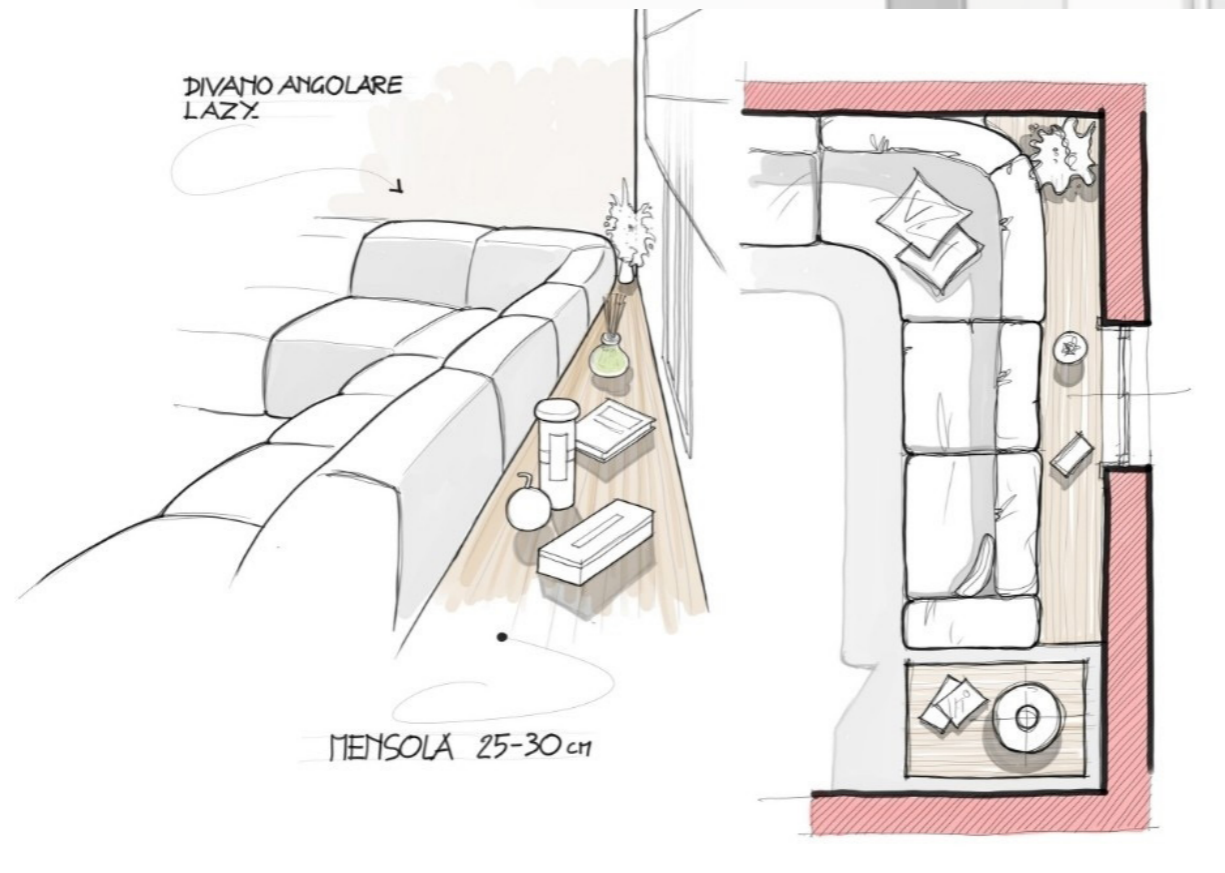
Collaboration with major international architectural firms was the key to its growth. Everything that comes from the planning and creativity of this lively production reality is the result of a passion and a lifestyle, inherited from generations, which translates the language of the author with free interpretation.



# The culture of the project

In all its aspects, the culture of design is the central pivot around which Mantellassi 1926 revolves.

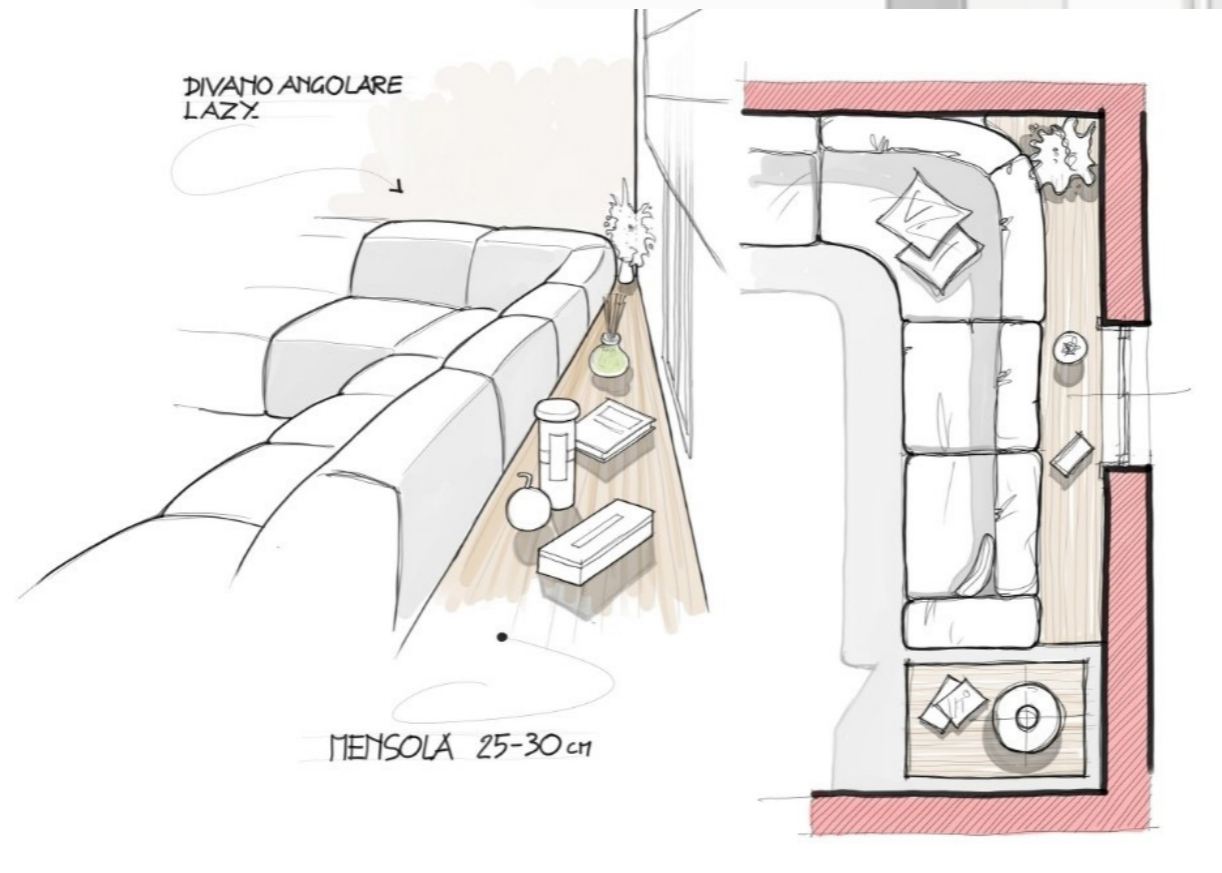
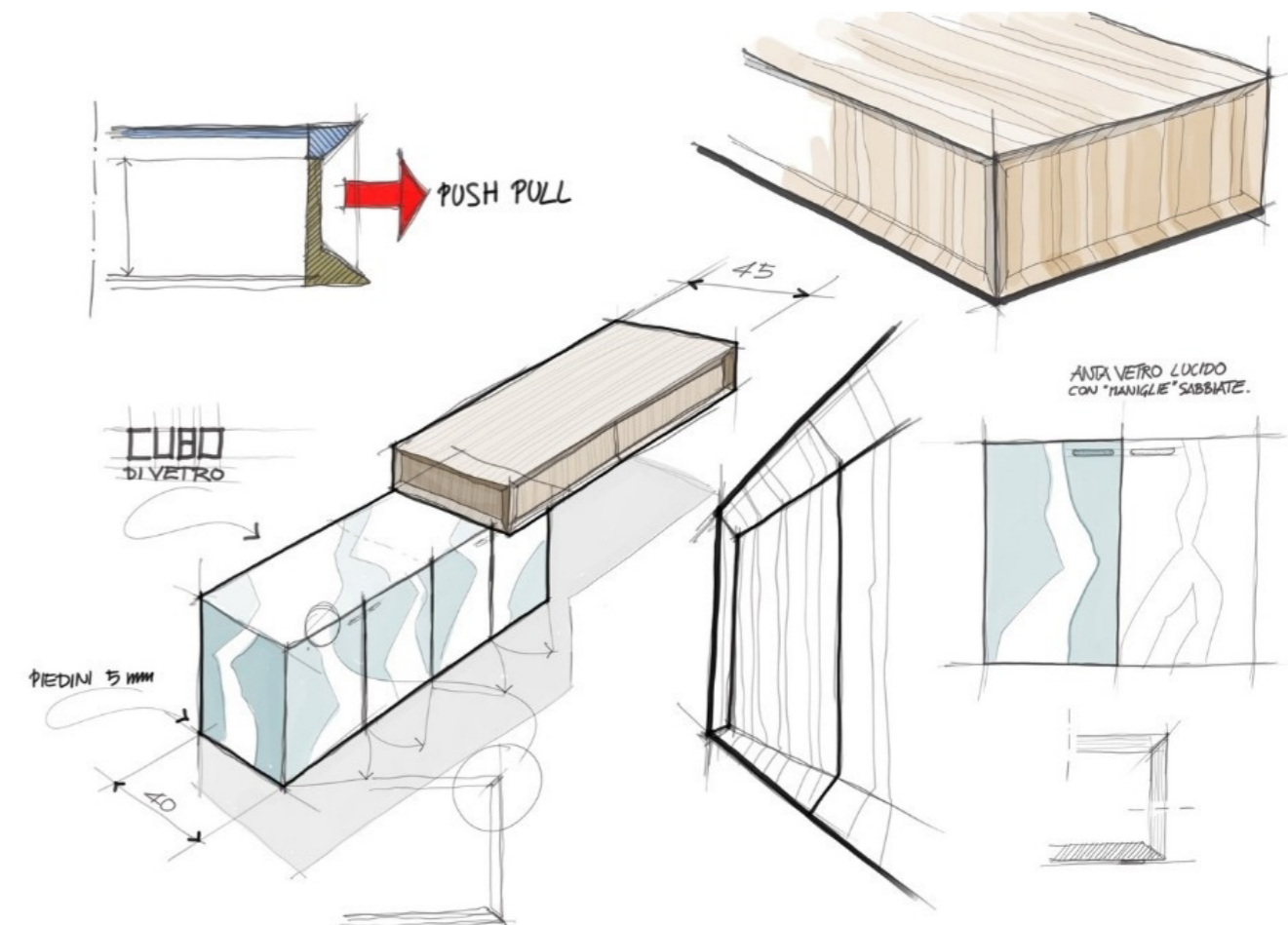
Collaboration with major international architectural firms was the key to its growth. Everything that comes from the planning and creativity of this lively production reality is the result of a passion and a lifestyle, inherited from generations, which translates the language of the author with free interpretation.



# The culture of the project

In all its aspects, the culture of design is the central pivot around which Mantellassi 1926 revolves.

Collaboration with major international architectural firms was the key to its growth. Everything that comes from the planning and creativity of this lively production reality is the result of a passion and a lifestyle, inherited from generations, which translates the language of the author with free interpretation.



# The evolution of the project



# The evolution of the project



# The evolution of the project



# PLACIDO / *contemporary best seller*

Placido is a modular sofa that combines comfort and aesthetics. The simplicity of the lines and the modularity make it easily adapt to many types of environment and makes it suitable for any situation, while maintaining the soul of a modern sofa.

The comfort, convenience and ergonomics of this sofa are unmatched, thanks to its maxi seat, which can reach up to 85 cm in width each.

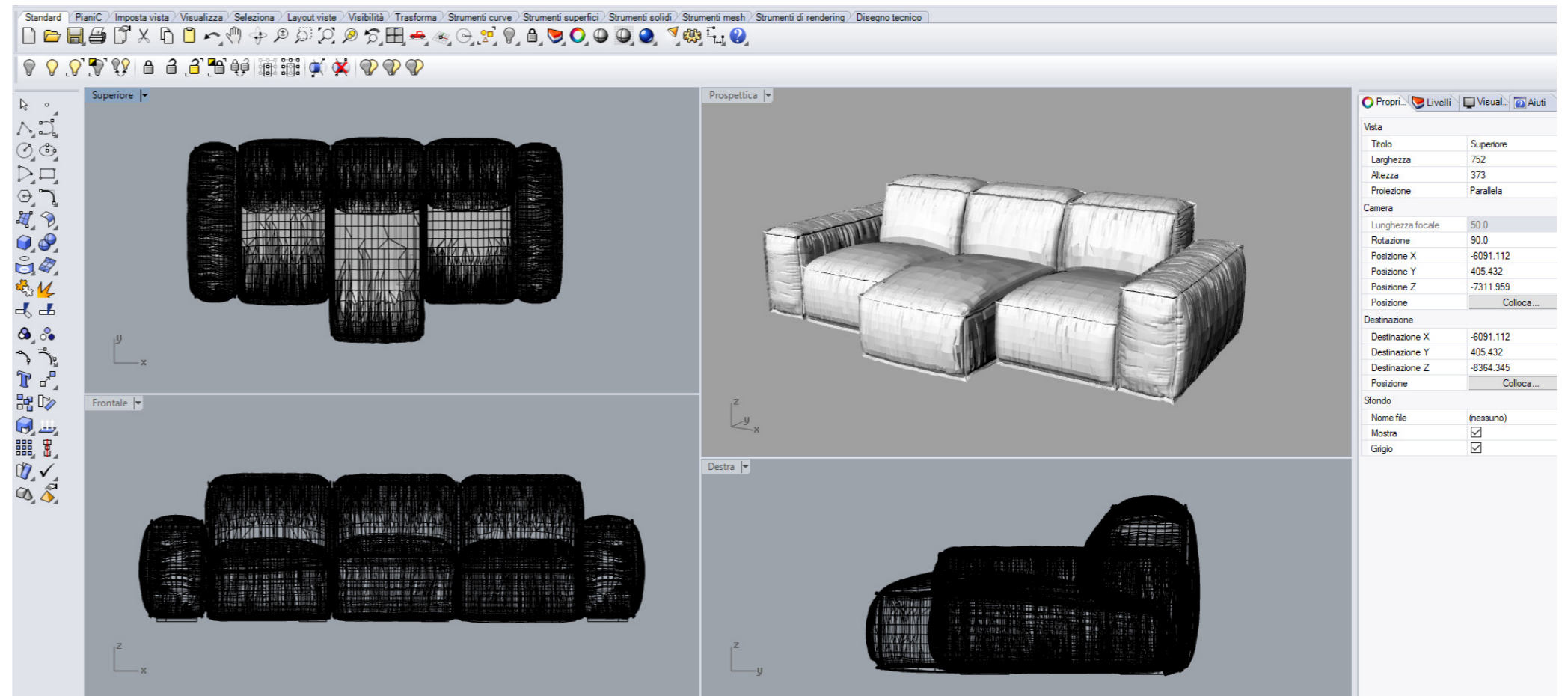
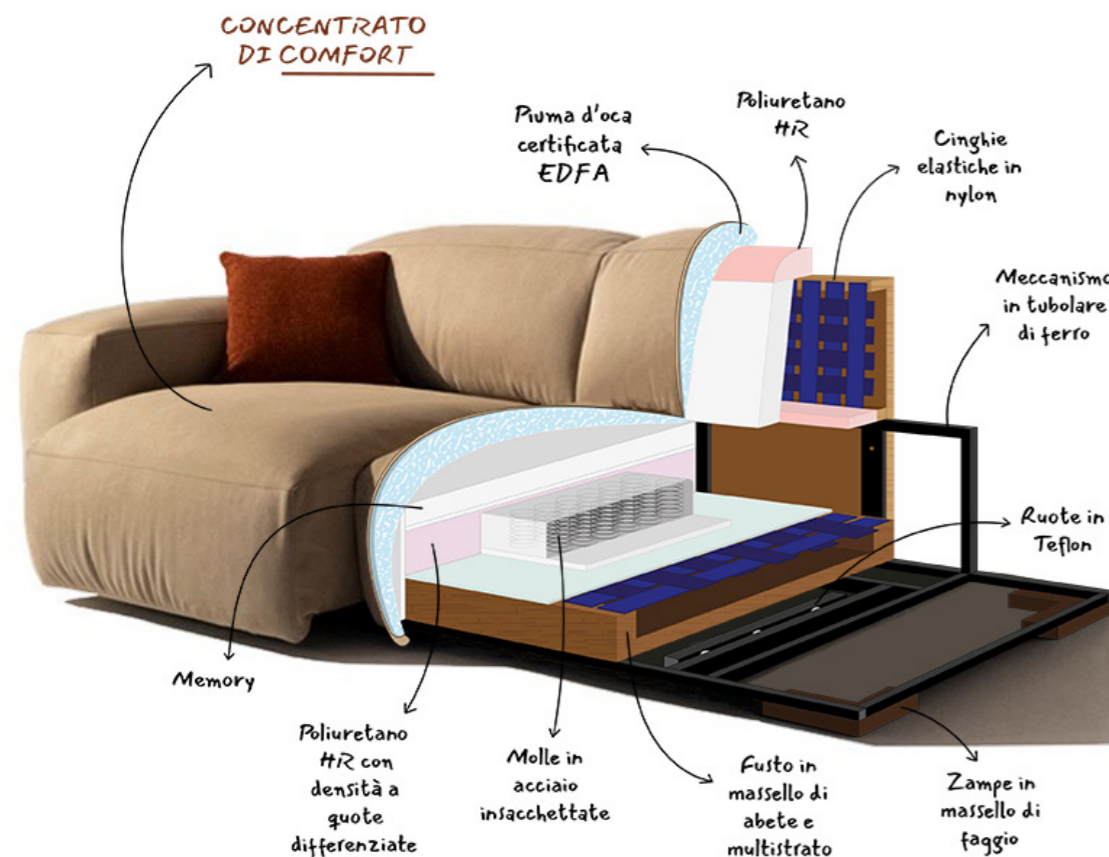
The modular sofa Placido is equipped with an internal mechanism that allows the extraction of each seat by 30 cm.

This mechanism has been designed for those who do not want to give up the comfort of a peninsula, but who want to keep the dimensions of the sofa as compact as possible.

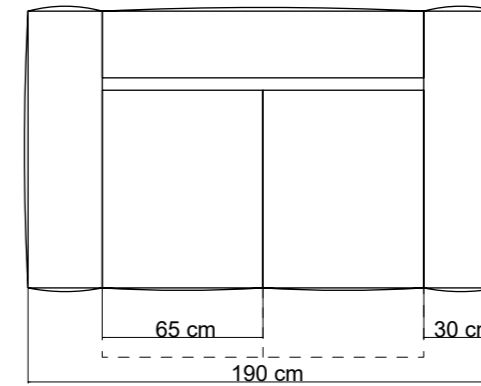
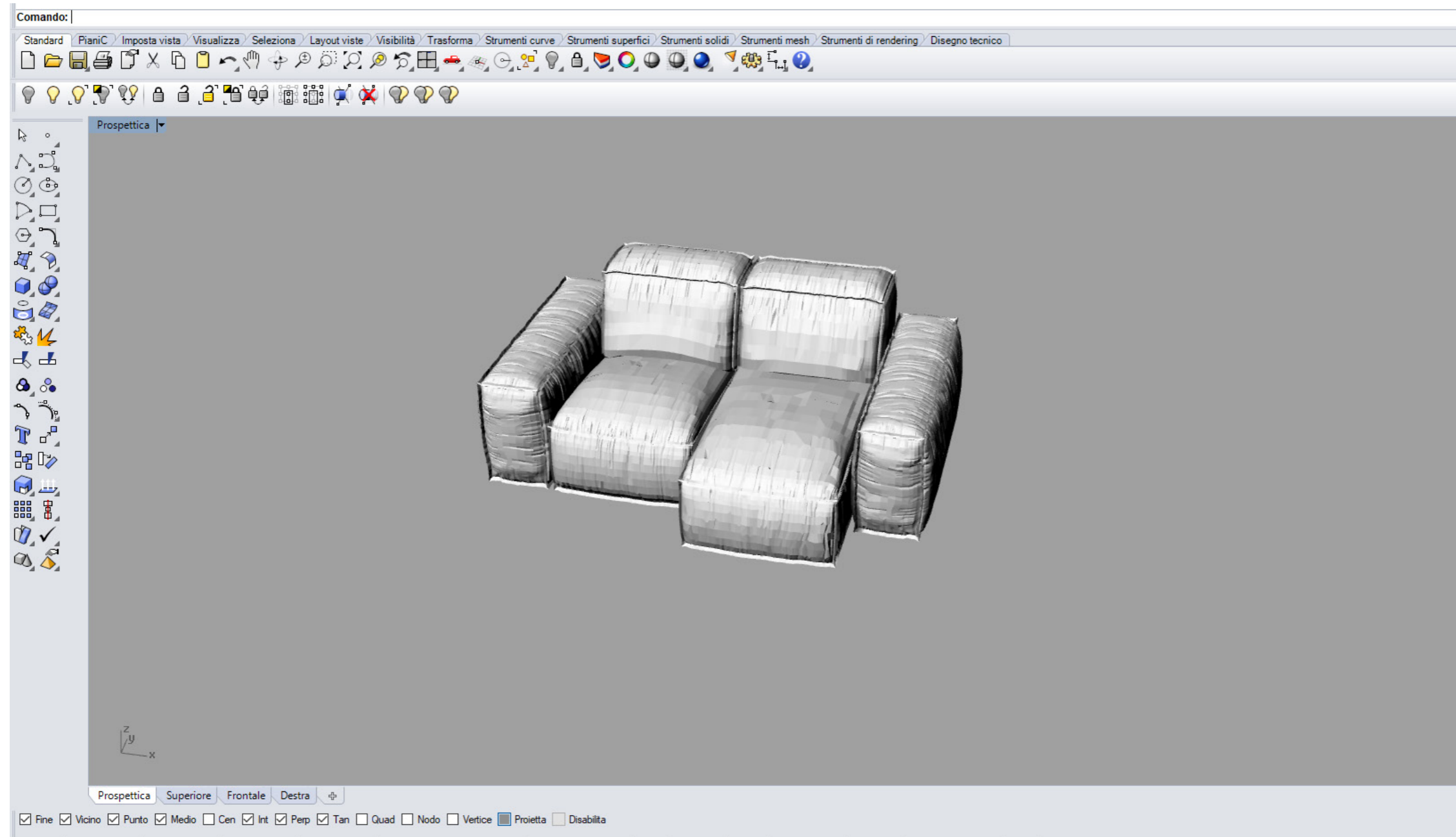


# PLACIDO / *from drawing to advanced planning*

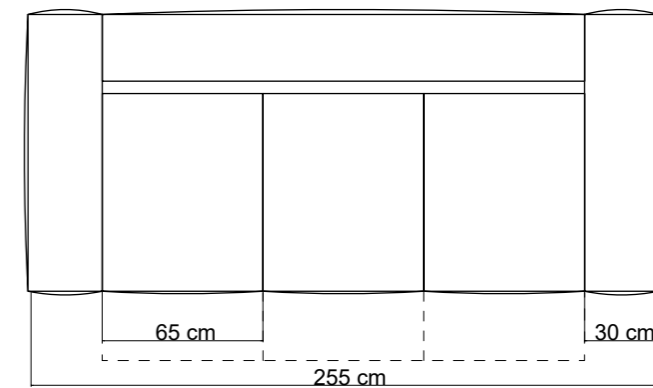
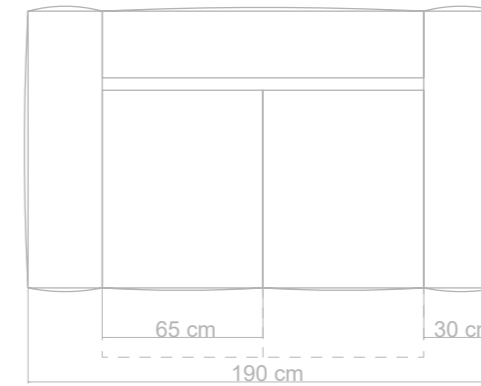
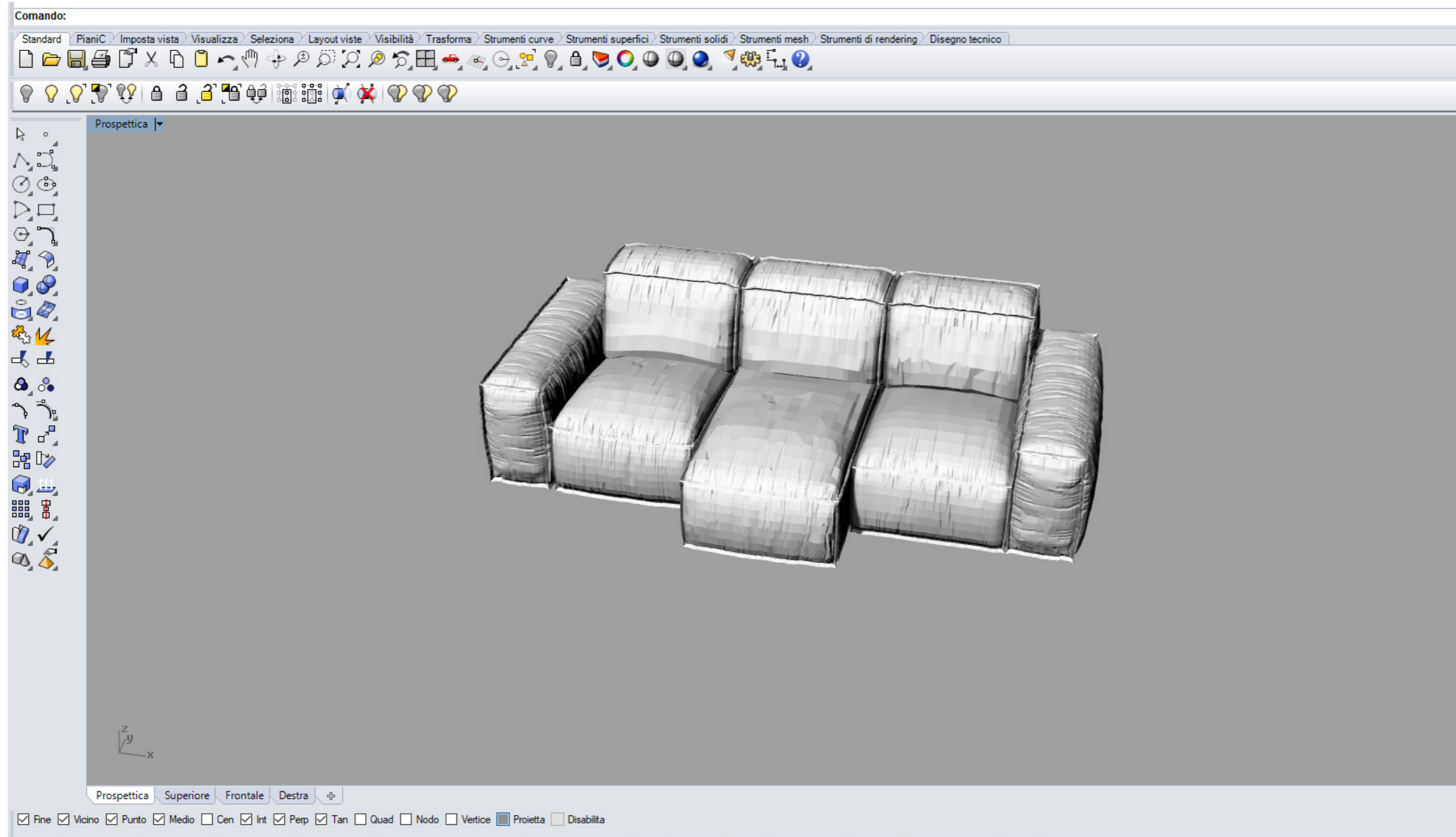
From study to idea, from idea to design, from drawing to planning: a creative and virtuous process that leads to the birth of each of our sofas. After a first series of freehand sketches, we move on to the creation of the illustrations in order to give the drawing a photo-realistic effect. The next stage is the design of the selected sketches. 2D dimensional drawings and 3D models are made in order to study the project at 360 degrees. During this phase we make the dimensional drawings that are sent to the craftsmen to make the first prototypes. Once the prototype is validated by the creative team, we move on to the definition and engineering of the project which will be followed by production which will give life to the final model, ready to furnish all the houses in the world.



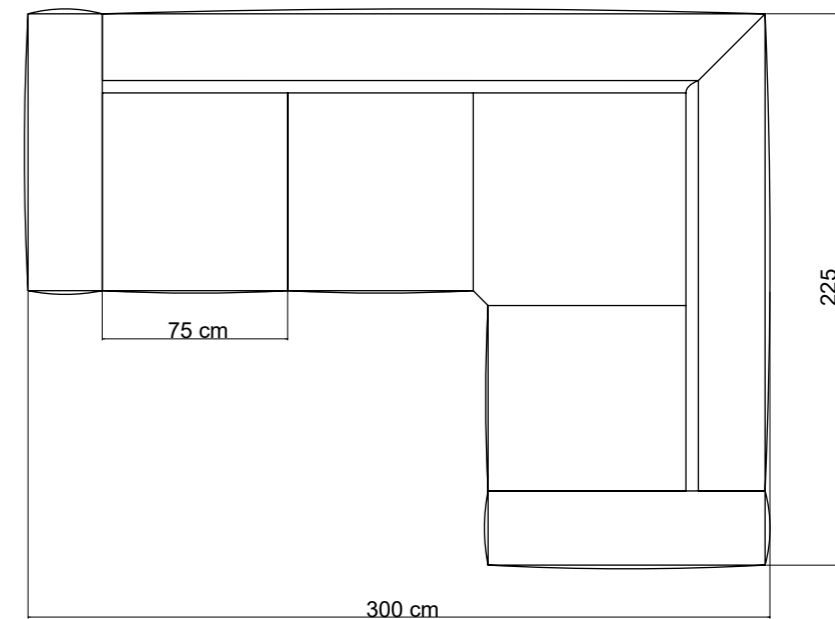
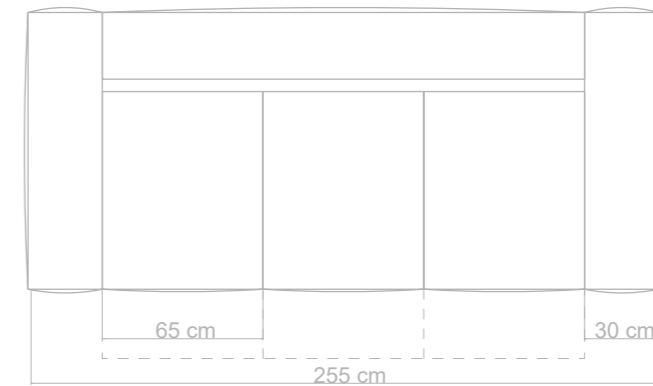
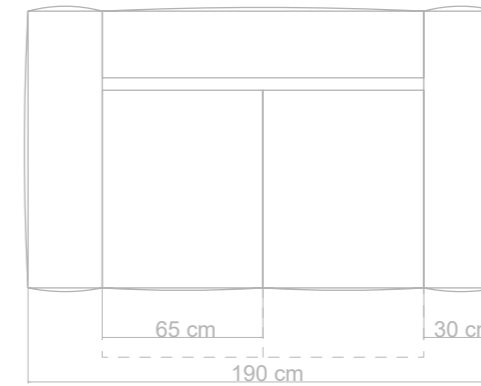
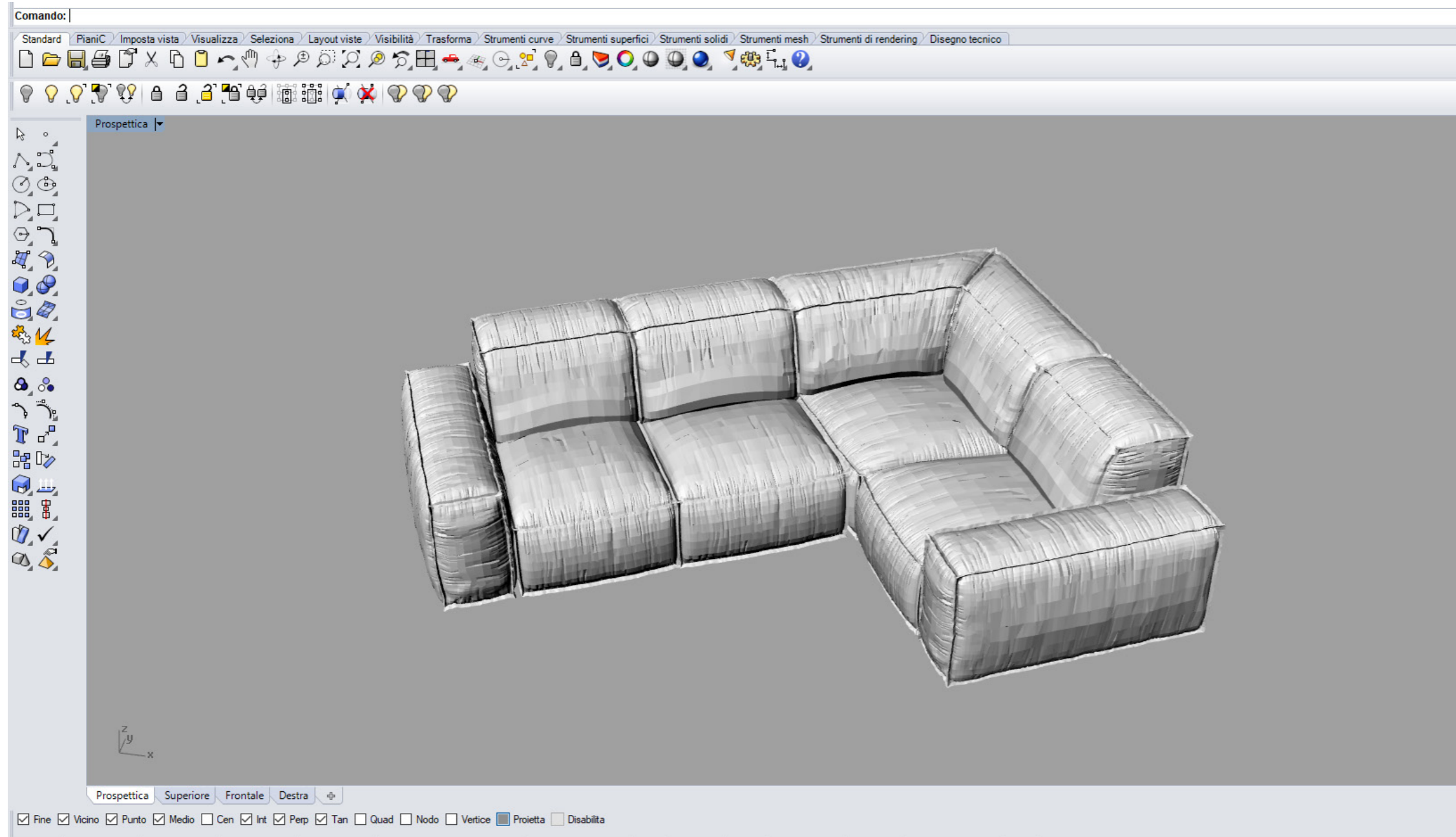
# PLACIDO / *a sofa,* *many compositions based on* *to your needs*



# PLACIDO / *a sofa,* *many compositions based on* *to your needs*



# PLACIDO / a sofa, many compositions based on to your needs



# PLACIDO / *a sofa customizable that looks like you*

Placido is available in leather and fabric. The range of coverings includes dozens of colors and special new generation eco-sustainable stain-resistant fabrics to satisfy the most demanding customers. It is also possible to have the sofa in a removable version.

HOME / CAMPIONARIO

## CAMPIONARIO

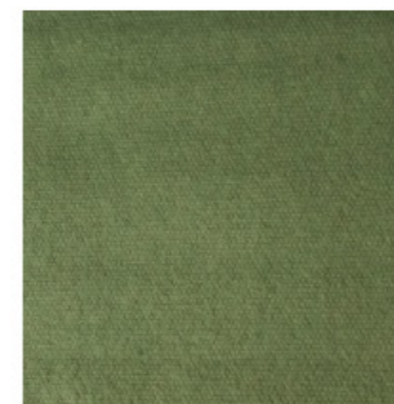
## TUTTI I MATERIALI

### MATERIALI

- > [Tutti i materiali](#)
- > Bouclè
- > Combinazione Microfibra Tessuto
- > Cotone
- > Cuoio
- > Denim
- > Feltrone
- > Lana
- > Lino Antimacchia
- > Lino
- > Microfibra
- > Microfibra High Tech
- > Misto Canapa Cotone
- > Misto Cotone
- > Misto Viscosa Cotone
- > Misto Cotone Lino
- > Misto Viscosa Lino
- > Pelle
- > Velluto



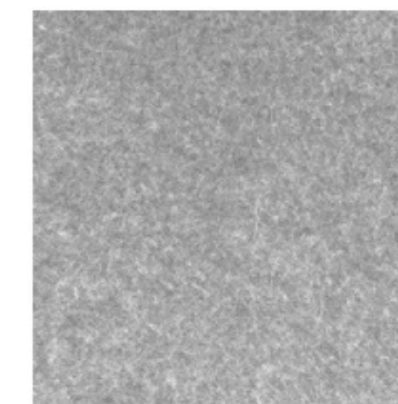
Comb. Cuero-Boucle - Cat. MN



Cotone Milano - Cat. Smart



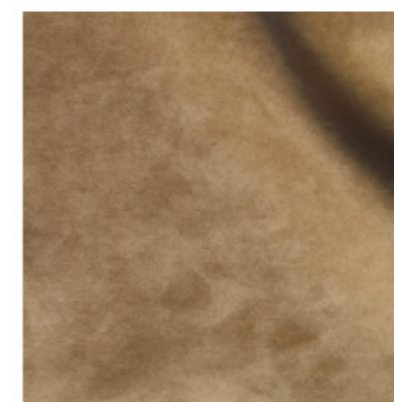
Denim - Cat. Super



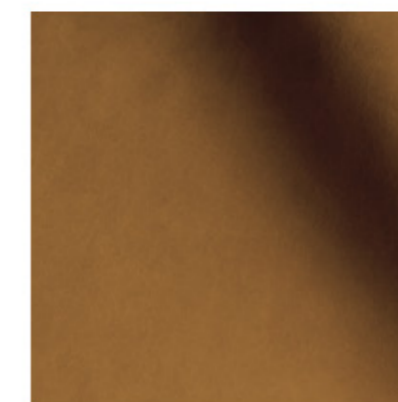
Feltrone - Cat. Basic



Lana - Cat. Extra



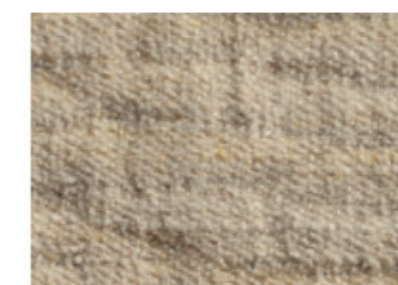
Microfibra Astrea - Cat. Basic



Microfibra High Tech Cuero - ...



Misto Canapa Cotone Nemo - ...



**PLACIDO** / *a sofa customizable that looks like you*



HOME / CAMPIONARIO

## CAMPIONARIO

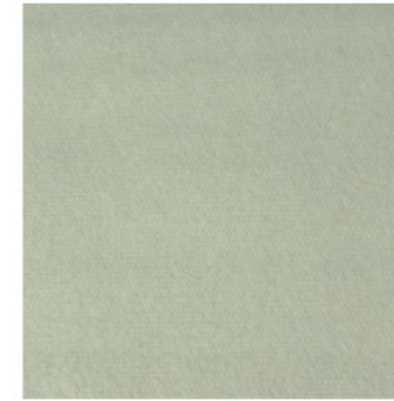
## TUTTI I MATERIALI

### MATERIALI

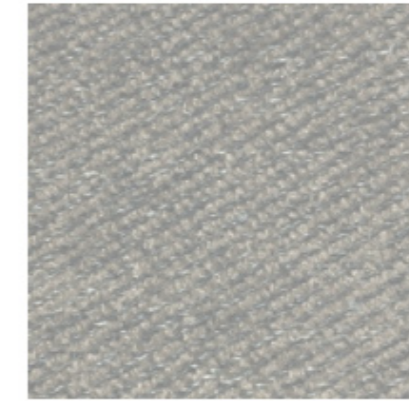
- > [Tutti i materiali](#)
- > Bouclè
- > Combinazione Microfibra Tessuto
- > Cotone
- > Cuoio
- > Denim
- > Feltrone
- > Lana
- > Lino Antimacchia
- > Lino
- > Microfibra
- > Microfibra High Tech
- > Misto Canapa Cotone
- > Misto Cotone
- > Misto Viscosa Cotone
- > Misto Cotone Lino
- > Misto Viscosa Lino
- > Pelle
- > Velluto



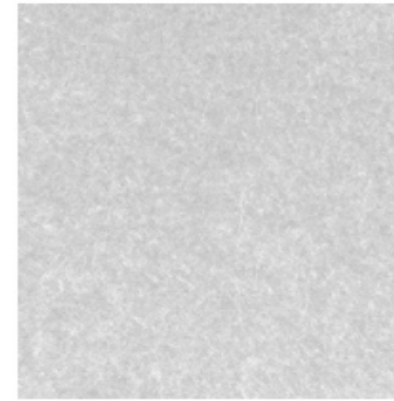
Comb. Cuero-Boucle - Cat. MN



Cotone Milano - Cat. Smart



Denim - Cat. Super



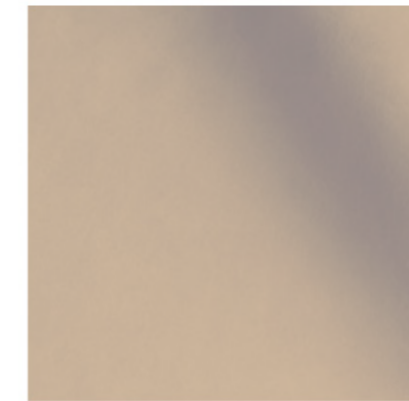
Feltrone - Cat. Basic



Lana - Cat. Extra



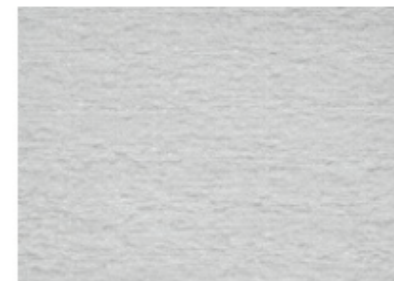
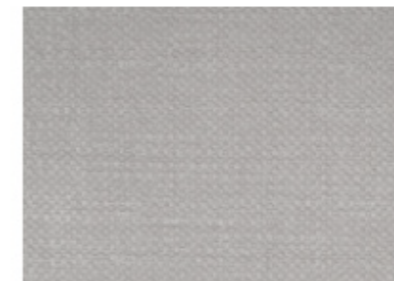
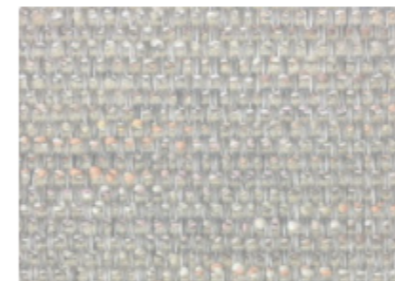
Microfibra Astrea - Cat. Basic



Microfibra High Tech Cuero - ...



Misto Canapa Cotone Nemo - ...



**PLACIDO** / *a sofa customizable that looks like you*

HOME / CAMPIONARIO

CAMPIONARIO

TUTTI I MATERIALI

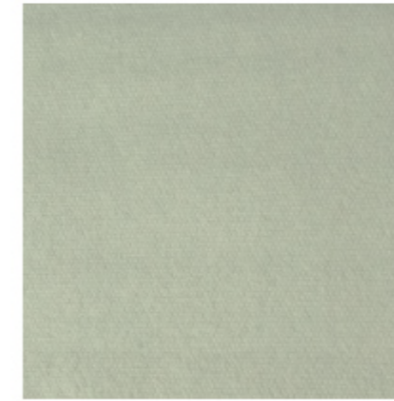
MATERIALI

> [Tutti i materiali](#)

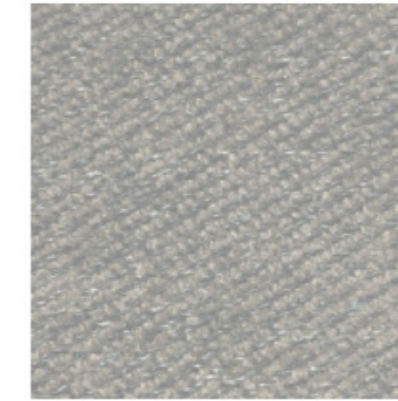
> Bouclè



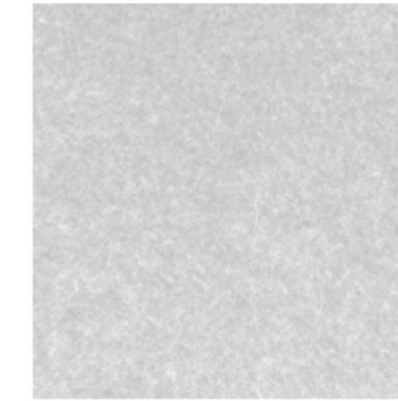
Comb. Cuero-Boucle - Cat. MN



Cotone Milano - Cat. Smart



Denim - Cat. Super



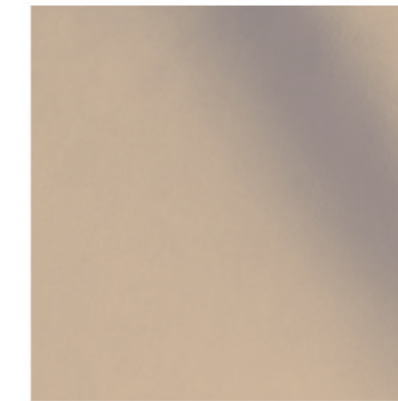
Feltrone - Cat. Basic



Lana - Cat. Extra



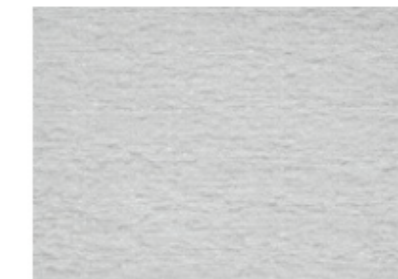
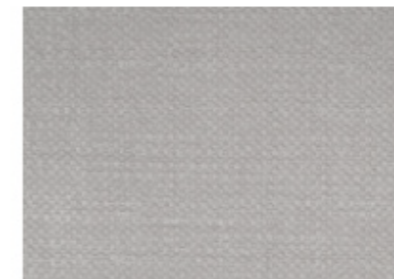
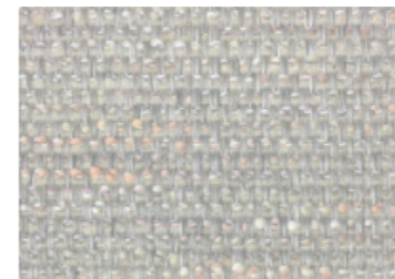
Microfibra Astrea - Cat. Basic



Microfibra High Tech Cuero - ...



Misto Canapa Cotone Nemo - ...



**PLACIDO** / *a sofa customizable that looks like you*

HOME / CAMPIONARIO

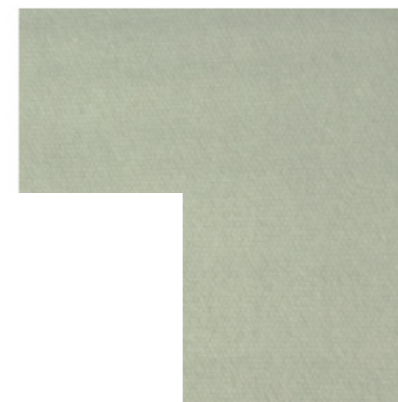
CAMPIONARIO

TUTTI I MATERIALI

MATERIALI

> [Tutti i materiali](#)

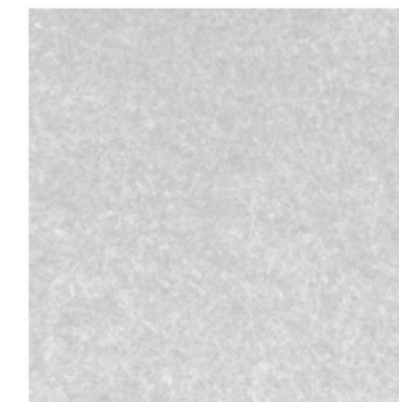
> Bouclè



ano - Cat. Smart



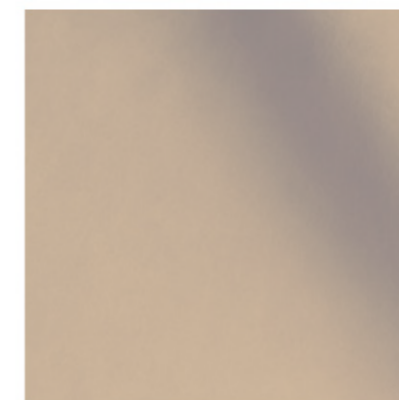
Denim - Cat. Super



Feltrone - Cat. Basic



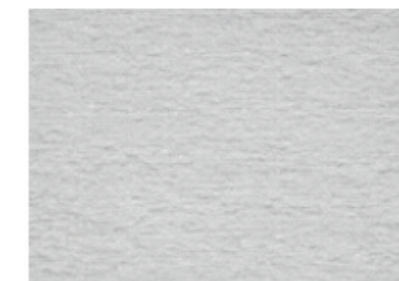
strea - Cat. Basic



Microfibra High Tech Cuero - ...



Misto Canapa Cotone Nemo - ...



**PLACIDO** / *a sofa customizable that looks like you*

HOME / CAMPIONARIO

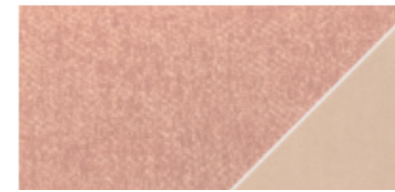
CAMPIONARIO

TUTTI I MATERIALI

MATERIALI

> [Tutti i materiali](#)

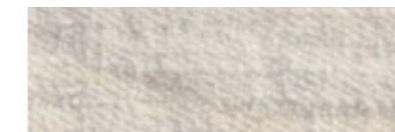
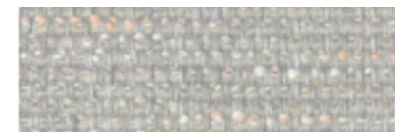
> Bouclè



Itrone - Cat. Basic



inapa Cotone Nemo - ...



## ◊ *Projected into the Future* *Our commitment to sustainability*

We are particularly sensitive to the environment that surrounds us and for this reason we ensure **traceability and transparency in the supply chain.**

We pay particular attention to the selection of raw materials that we choose to use. Through a continuous study, we research and select carefully fabrics and materials that are increasingly sustainable and environmentally friendly to be able to offer quality products that last over time.

Our products, for example, have barrels made of solid beech, poplar or fir, and multilayer panels that ensure quality and longevity to the product.

Some certifications that we consider very important:



### **RDS (Responsible Down Standard):**

This standard ensures that down and feathers used for padding elements are obtained from aquatic or terrestrial birds that have not been subjected to treatments that cause pain, suffering or stress and that the maintenance of traceability is applied throughout the entire production process.



### **FSC® (Forest Stewardship Council):**

This label identifies products containing wood from forests managed in a correct and responsible manner according to strict environmental, social and economic standards. The forest of origin has been independently controlled and evaluated in accordance with these standards, established and approved by the Forest Stewardship Council® a.c. through the participation and consent of interested parties.



### **EDFA (European Down and Feather Association):**

This international association brings together the world's leading manufacturers of feather articles and is committed to protecting consumers and especially animals.

# NATURALIA / *alla scoperta dei divani ecologici*

A project that speaks of nature, ecology, comfort and new resources: an entire line of furniture made with alternative and sustainable materials.

This new line includes ecological sofas, sofas and armchairs designed with your health and comfort in mind. Made with natural latex, organic fabrics, sustainable maple wood, and zero-VOC stains, our furnishings are the best choice for an “environmentally friendly” home.

## **Organic and eco-friendly materials Naturalia collection**

- Certified sustainable maple
- Cradle to Cradle GOLD-certified natural latex
- Certified organic wool Certified organic hemp
- Certified organic cotton/ linen
- Certified duck feather cushions
- GreenGuard-certified sticker Natural coir (coconut fiber with natural latex)
- Natural jute webbing
- Zero-VOC finishes (Volatile organic compounds)
- Zero-VOC flaxseed oil



## **Divano ITALO**

*realizzato con tessuti ecologici, cuscini in piuma d'anatra, lattice e acero massiccio*



**N** 1926

MANTELLASSI