

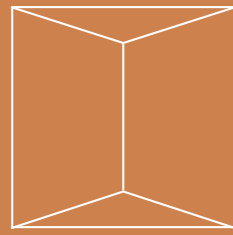
**theia**  
CREATIVE TILES



MILANO VELASCA  
PAG 9



MILANO SEMPIONE  
PAG 13



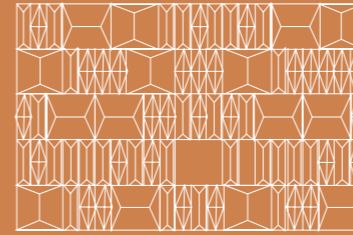
MILANO MISSORI  
PAG 17



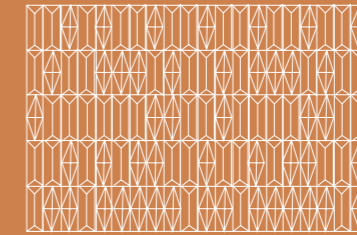
MAR DI FLORES  
PAG 23



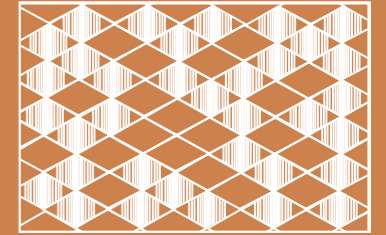
MAR DI GIAVA  
PAG 27



TERRA COTA  
PAG 85



TERRA DAWN  
PAG 86



TUA  
PAG 87



MAR DI BANDA  
PAG 31



MAR DI KARA  
PAG 35



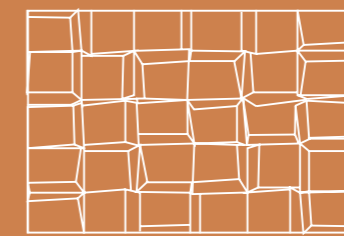
OBLIQUE  
PAG 39



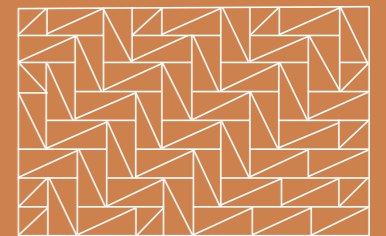
PRISMA  
PAG 43



TEJO  
PAG 88



DOURO  
PAG 89



TEJO BLACK & WHITE 1  
PAG 90



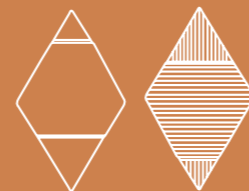
MONDEGO  
PAG 47



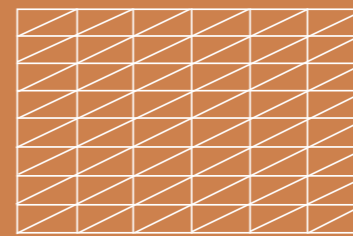
SARAH  
PAG 51



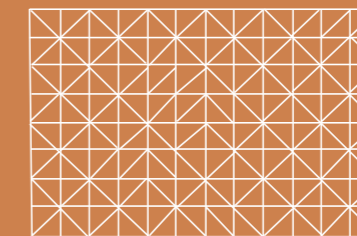
PATTERN  
PAG 55



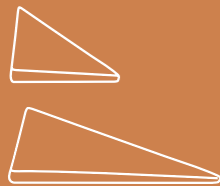
TUA  
PAG 59



TEJO BLACK & WHITE 2  
PAG 91



TEJO BLACK & WHITE 3  
PAG 92



TEJO  
PAG 65



DOURO  
PAG 69



GAUDÍ  
PAG 73



STRIPES  
PAG 77



DUO  
PAG 81

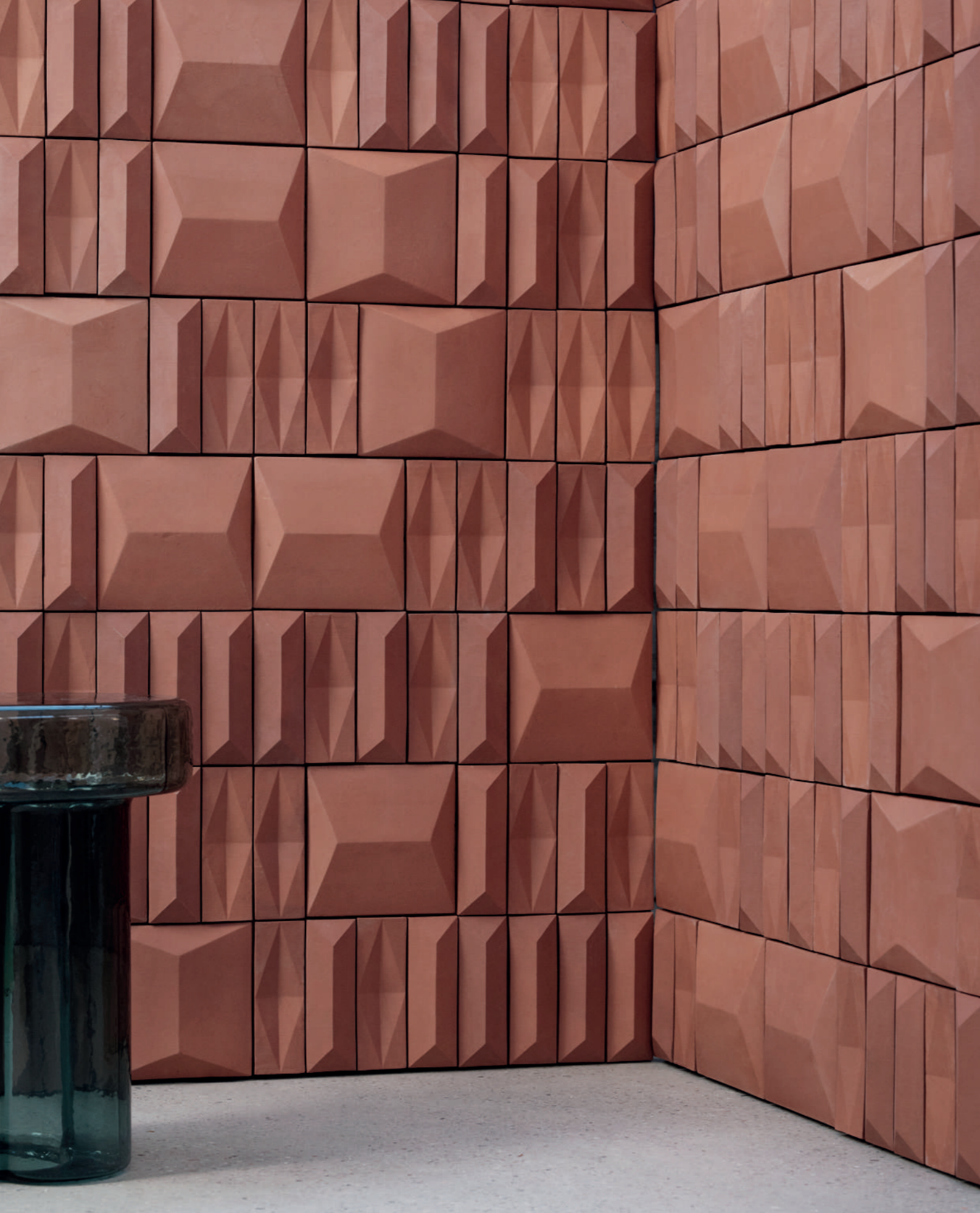


Theia Tiles is a Portuguese company of handmade tiles that started in 2017, Our production is based in Portugal and in its historical traditional techniques of production, where we have skilled craftsmen that carefully bring to life every single piece that we create.

Our tiles are made of earthenware, an extraordinary material, made of just clay and water, simple and eco-friendly materials. Theia's tiles are handmade products, where the earthenware is pressed, fired and hand painted. It is an artisanal production that results in a truly unique product.

We pay careful attention to each step of manufacturing, in a close relation between our design and production teams. The quality is closely controlled to assure the best finishing, resistance and durability. Our main objective while designing and producing our tiles is assuring we offer top quality products. That has been crucial to our increasingly growing recognition.





## milano by STUDIOPEPE.



Introducing, Milano, our latest collection, a product of the second collaboration between Theia Tiles and Studiopepe. Drawing inspiration from the vibrant city of Milan and its diverse neighborhoods, this collection is a unique amalgamation of contemporary design and traditional craftsmanship.





## milano velasca

\*Milano a registered design

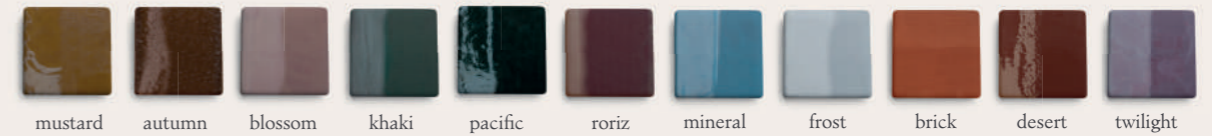


### technical information

Handmade tiles available in terracotta and faience  
 w 6 cm x h 18 cm x d 3 cm  
 w 2" x h 7" x d 1,2"  
 91 units per sqm  
 weight:  
 970 gr  
 2,14 lb  
 m<sup>2</sup> — 28 kg  
 sqm — 62 lb

\* all the sizes are approximate

### colours terracotta



### colours faience



th

COLLECTION MILANO

milano sempione  
STUDIOPEPE.



## milano sempione

\*Milano a registered design

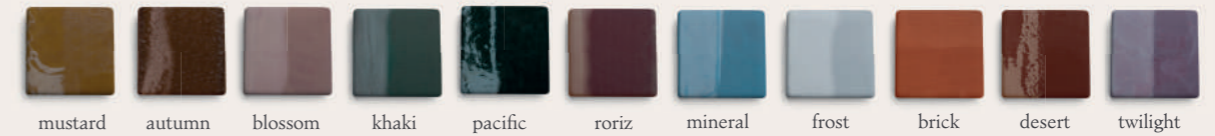


### technical information

Handmade tiles available in terracotta and faience  
 w 6 cm x h 18 cm x d 3 cm  
 w 2" x h 7" x d 1,2"  
 91 units per sqm  
 weight:  
 970 gr  
 2,14 lb  
 m<sup>2</sup> — 28 kg  
 sqm — 62 lb

\* all the sizes are approximate

### colours terracotta



### colours faience

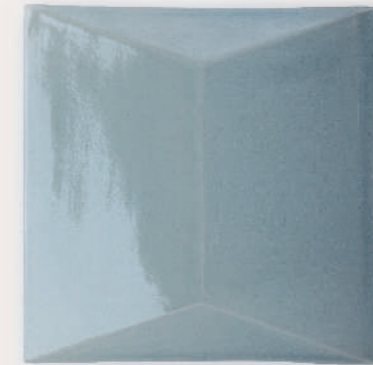






## milano missori

\*Milano a registered design

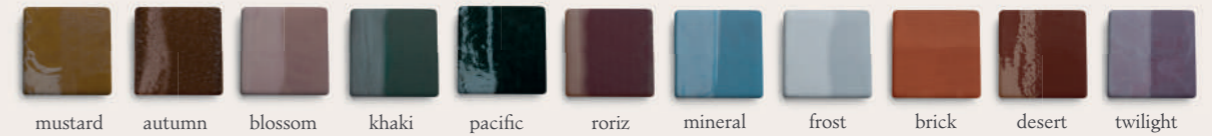


### technical information

Handmade tiles available in terracotta and faience  
 w 18 cm x h 18 cm x d 3 cm  
 w 7" x h 7" x d 1,2"  
 80 units per sqm  
 weight:  
 970 gr  
 2,14 lb  
 m<sup>2</sup> — 28 kg  
 sqm — 62 lb

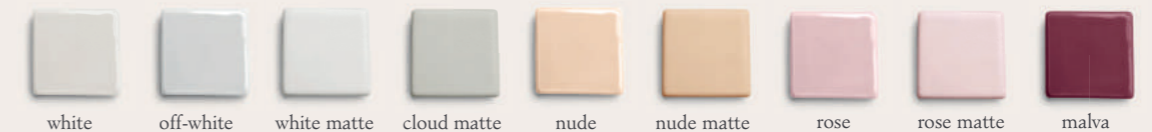
\* all the sizes are approximate

### colours terracotta



mustard autumn blossom khaki pacific roriz mineral frost brick desert twilight

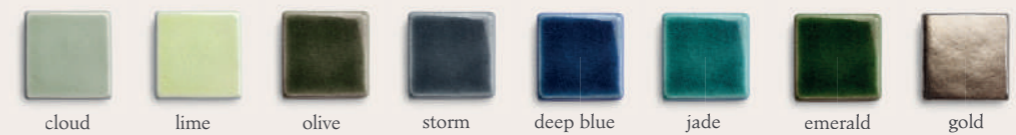
### colours faience



white off-white white matte cloud matte nude nude matte rose rose matte malva



malva matte wine ruby yellow sun ocre forest matte teal black black matte



cloud lime olive storm deep blue jade emerald gold



## mar di by STUDIOPEPE.



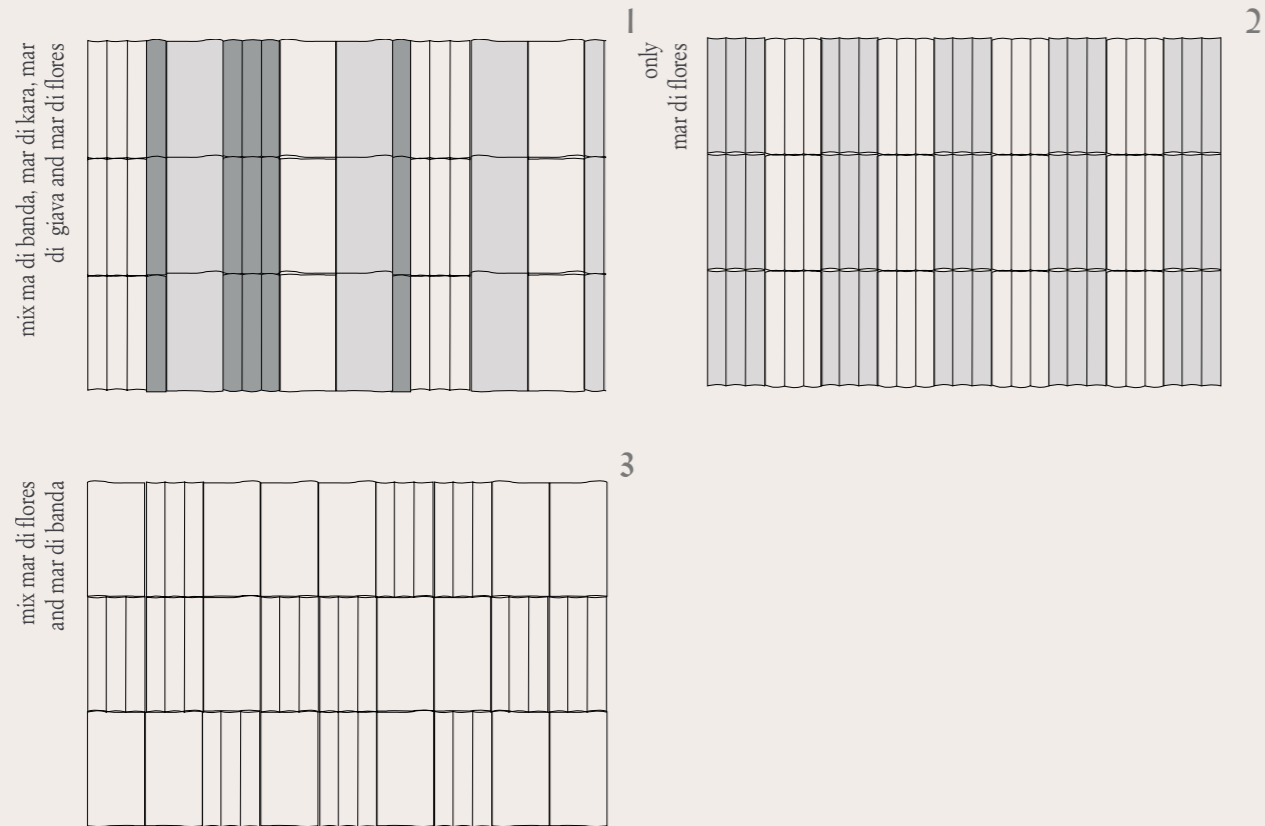
Mar Di is a collection designers by Studiopepe for Theia tiles, inspired by the motion of the sea, its waves, with a broader meaning to the theme of travel and exploration. A formal investigation that culminates with four models in which the surfaces interact differently with the light that hits them.

COLLECTION MAR DI

mar di flores  
STUDIOPEPE.

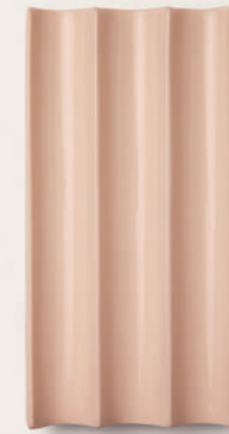


placement suggestions



mar di flores

\*Mar di is a registered design



technical information

Handmade tiles  
w 9 cm x h 18 cm x d 3 cm  
w 3,5" x h 7" x d 1,2"  
62 units per sqm  
weight:  
970 gr  
2,14 lb  
m<sup>2</sup> — 24,25 kg  
sqm — 53,5 lb

\* all the sizes are approximate

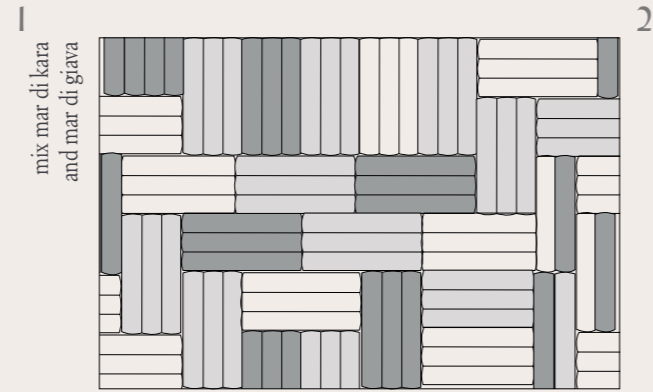
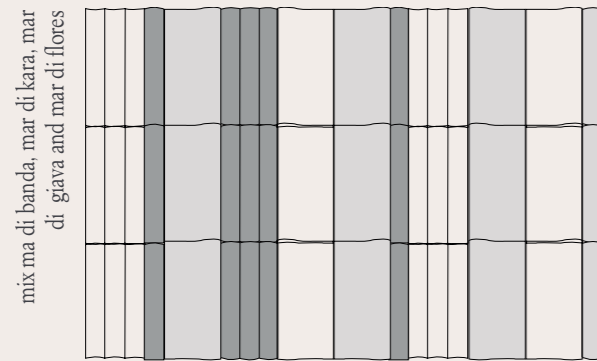
colours







placement suggestions



mar di giava

\*Mar di is a registered design



technical information

Handmade tiles  
 w 9 cm x h 18 cm x d 3 cm  
 w 3,5" x h 7" x d 1,2"  
 62 units per sqm  
 weight:  
 970 gr  
 2,14 lb  
 m<sup>2</sup> — 24,25 kg  
 sqm — 53,5 lb

\* all the sizes are approximate

colours





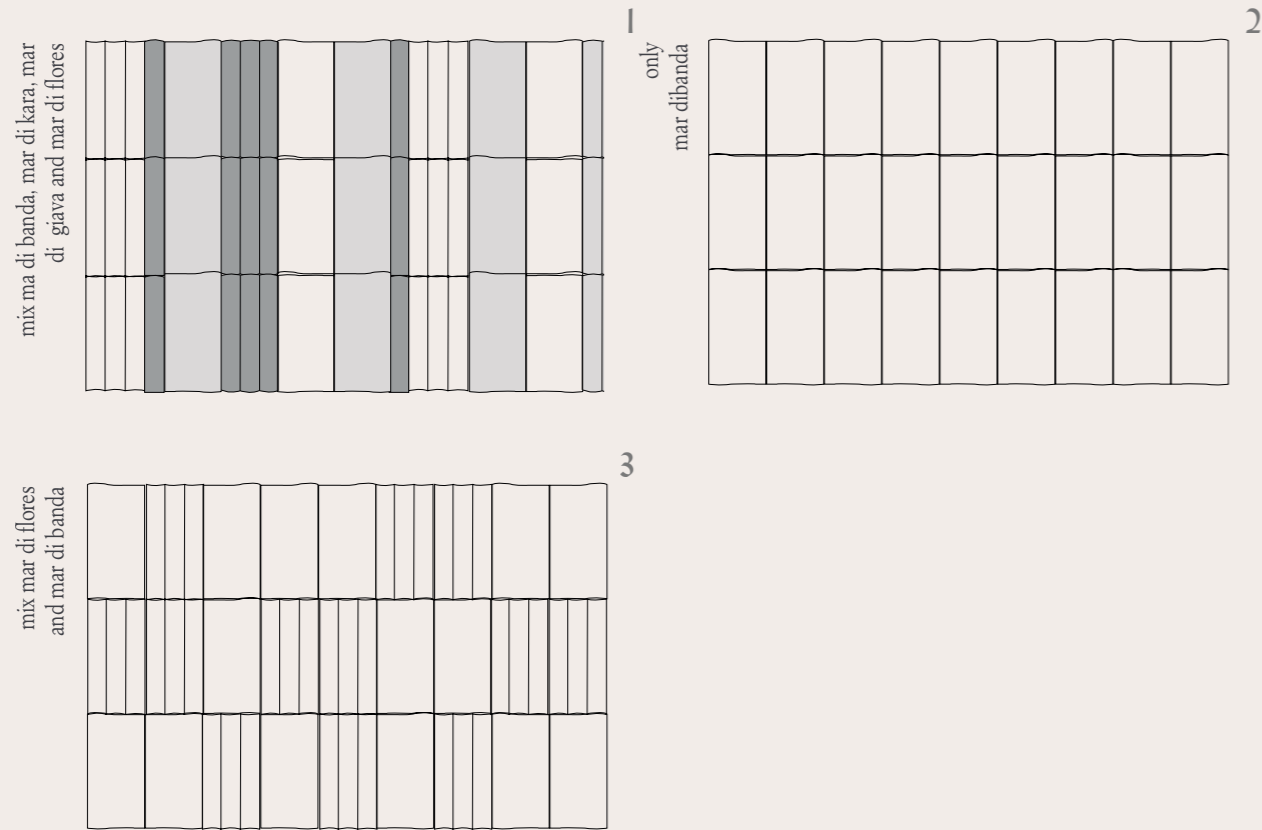
th

COLLECTION MAR DI

mar di banda  
STUDIOPEPE.



placement suggestions



mar di banda

\*Mar di is a registered design



technical information

Handmade tiles  
 w 9 cm x h 18 cm x d 3 cm  
 w 3,5" x h 7" x d 1,2"  
 62 units per sqm  
 weight:  
 970 gr  
 2,14 lb  
 m<sup>2</sup> — 24,25 kg  
 sqm — 53,5 lb

\* all the sizes are approximate

colours





th

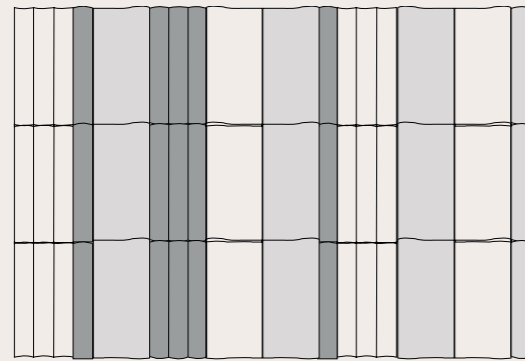
COLLECTION MAR DI

mar di kara  
STUDIOPEPE.



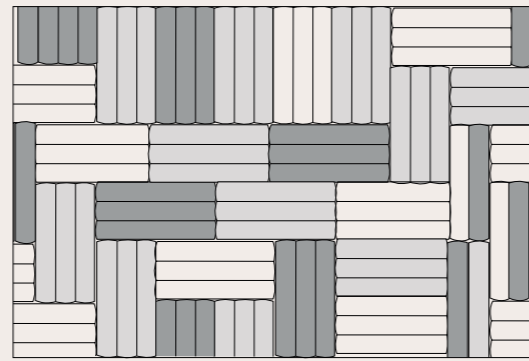
placement suggestions

mix ma di banda, mar di kara, mar di giava and mar di flores



1

mix mar di kara and mar di giava



2

only mar di kara



3

mar di kara

\*Mar di is a registered design



technical information

Handmade tiles  
 w 3 cm x h 18 cm x d 3 cm  
 w 1,2" x h 7" x d 1,2"  
 185 units per sqm  
 weight:  
 970 gr  
 2,14 lb  
 m<sup>2</sup> — 24,25 kg  
 sqm — 53,5 lb

\* all the sizes are approximate

colours





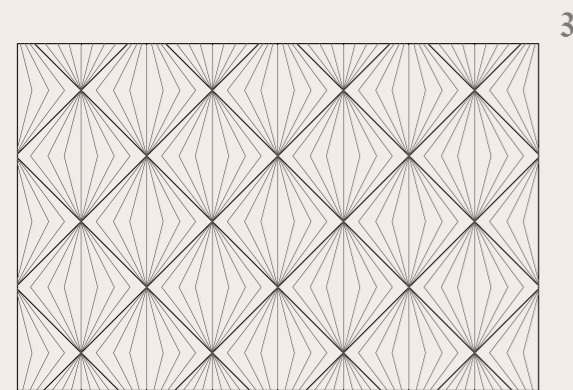
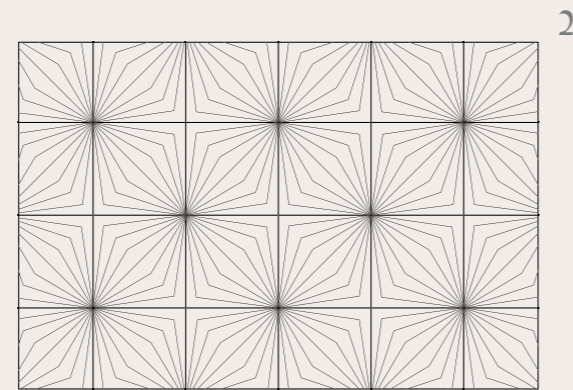
## oblique



Oblique is inspired by the elegance of Art Deco; formed by a number of diagonal surfaces, this tile creates a *trompe l'oeil* effect. Sturdy and discreet, its bold lines create an elegant tridimensionality that can shine anywhere.

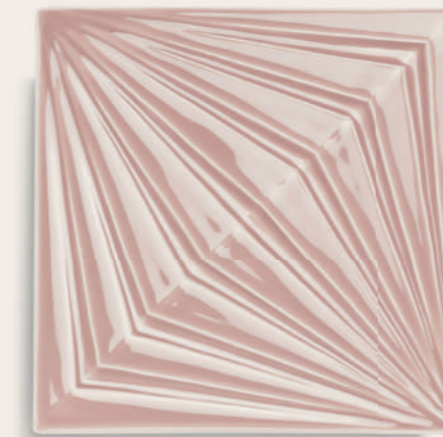


placement suggestions



oblique

\*Oblique is a registered design



technical information

Handmade tiles  
 w 15 cm x h 15 cm x d 2 cm  
 w 5,9" x h 5,9" x d 0,8"  
 45 units per sqm  
 weight:  
 690 gr  
 1,5 lb  
 m<sup>2</sup> — 31 kg  
 sqm — 67,5 lb

\* all the sizes are approximate

colours





## prisma

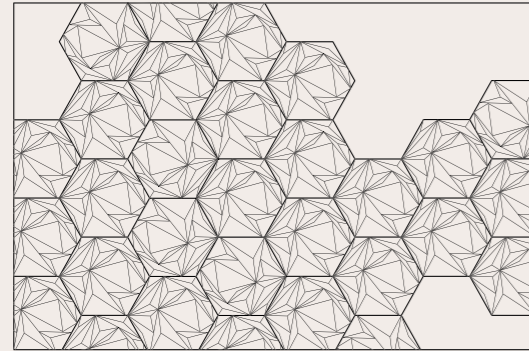


Movement is essential in this tile, with crisp lines, strong shapes and solid shadows coming together in a rhythmic tridimensionality. Prisma is a polygonal tile that creates a kaleidoscopic effect.

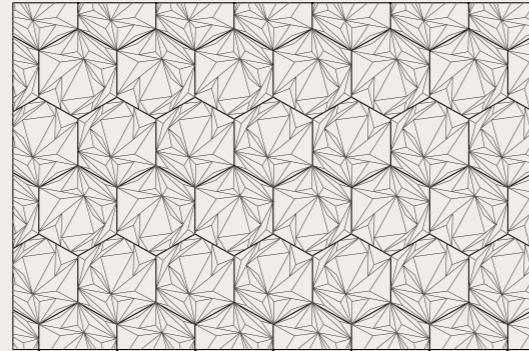


placement suggestions

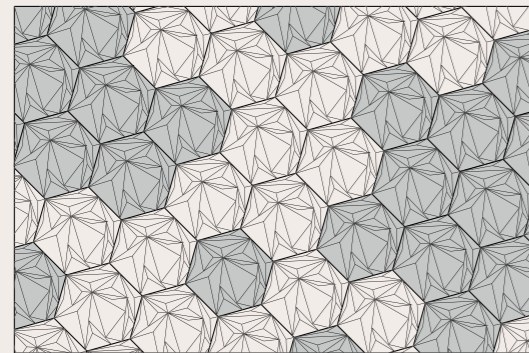
prisma



1



2



3

prisma

\*Prisma is a registered design



technical information

Handmade tiles  
 w 16 cm x h 13,5 cm x d 2 cm  
 w 6,3" x h 5,3" x d 0,8"  
 64 units per sqm  
 weight:  
 360 gr  
 0,8 lb  
 m<sup>2</sup> — 23 kg  
 sqm — 51,2 lb

\* all the sizes are approximate

colours





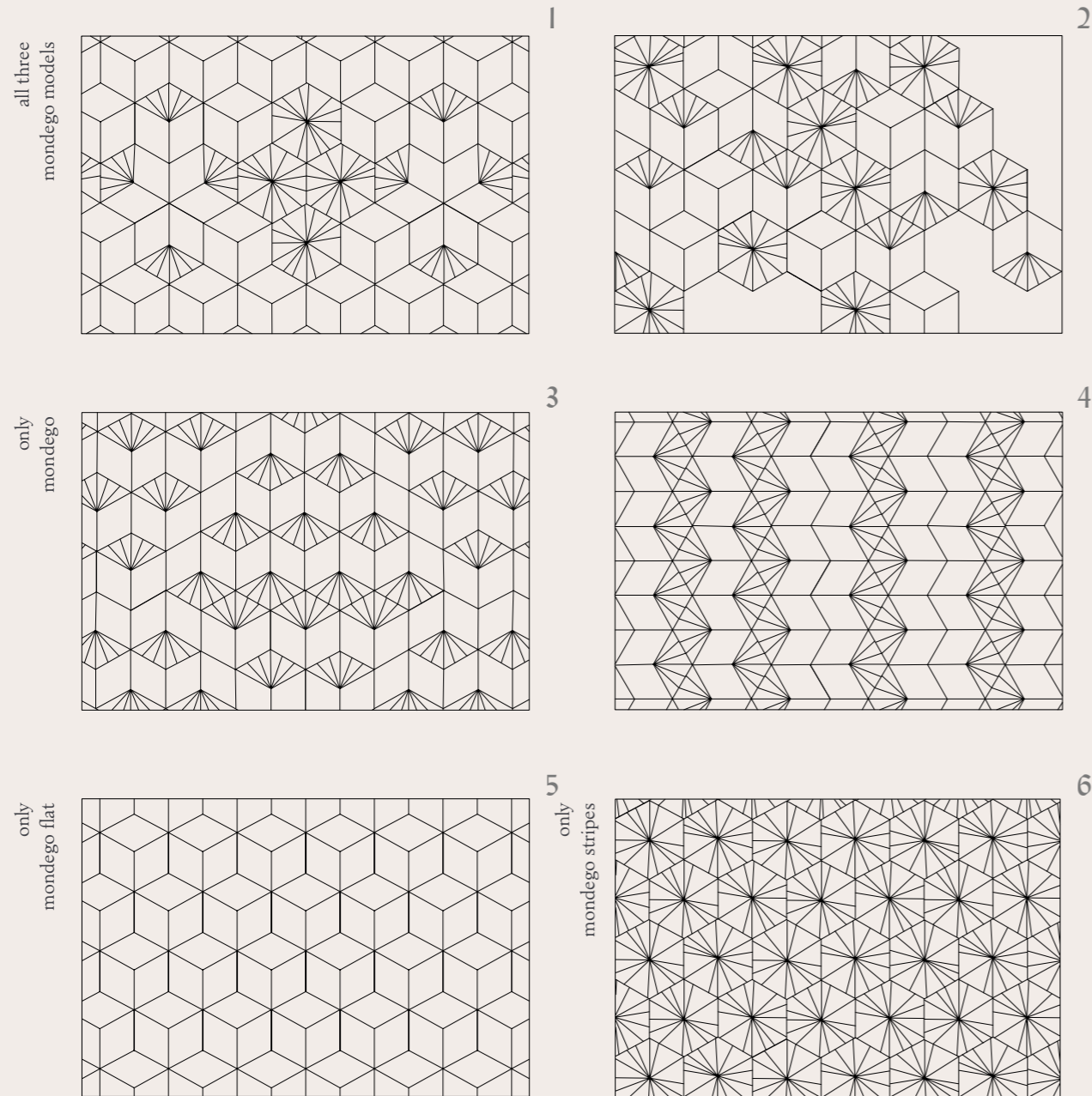
## mondego



An ode to its own roots, inspired by the green hills that form the center of Portugal, Mondego collection encompasses three tiles, ranging from a soft surfaced tile, a fully striped tile and a half striped tile.



placement suggestions



mondego

\*Mondego is a registered design



Mondego Flat



Mondego



Mondego Stripes

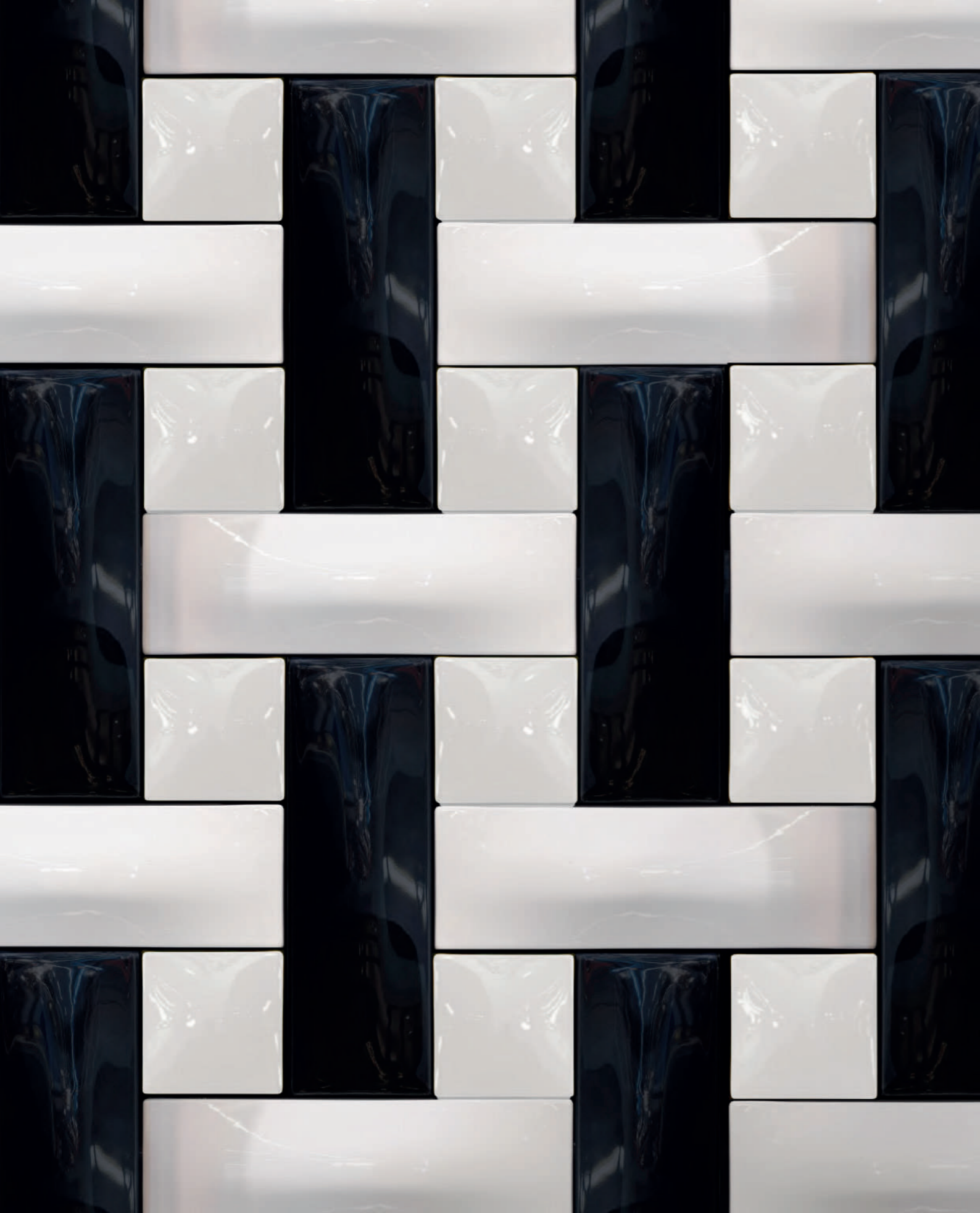
technical information

Handmade tiles  
 w 13,5 cm x h 16 cm x d 2 cm  
 w 5,3" x h 6,3" x d 0,8"  
 64 units per sqm  
 weight:  
 380 gr  
 0,84 lb  
 m<sup>2</sup> — 24,3 kg  
 sqm — 53,8 lb

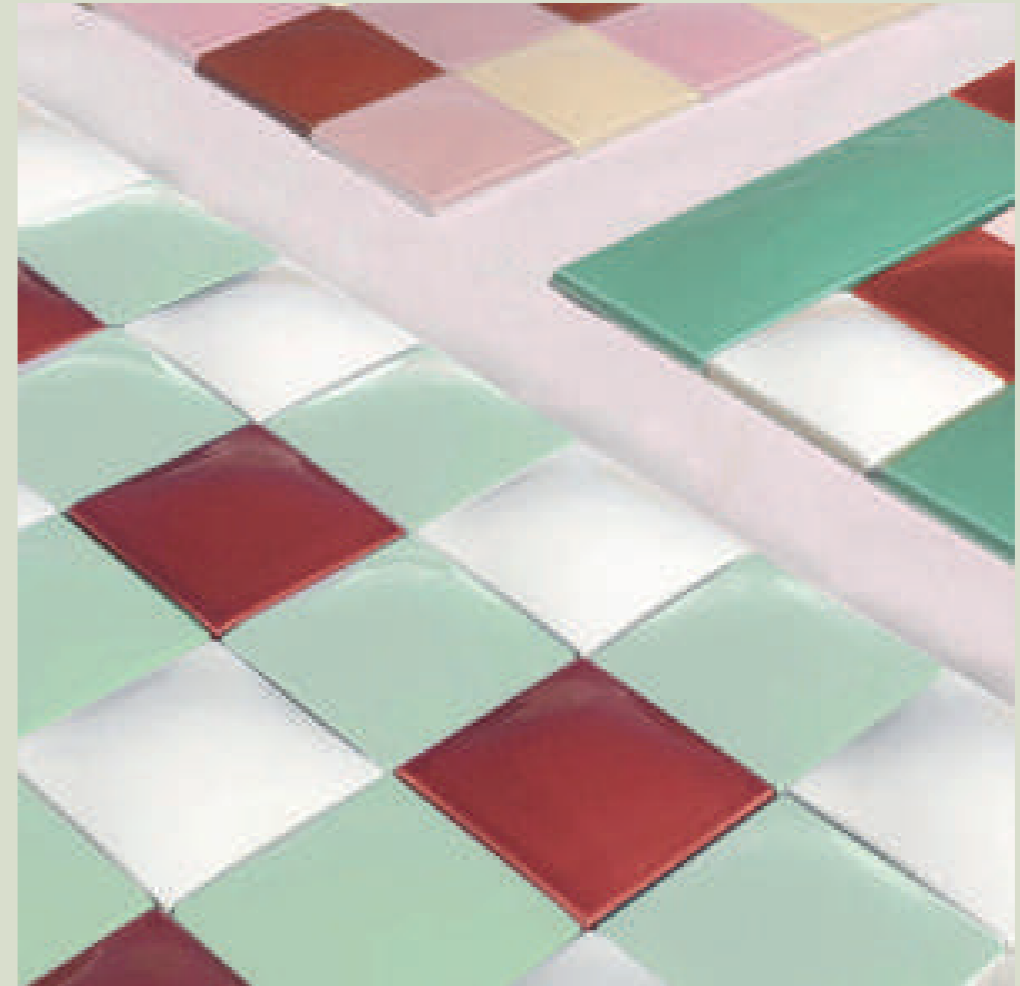
\* all the sizes are approximate

colours





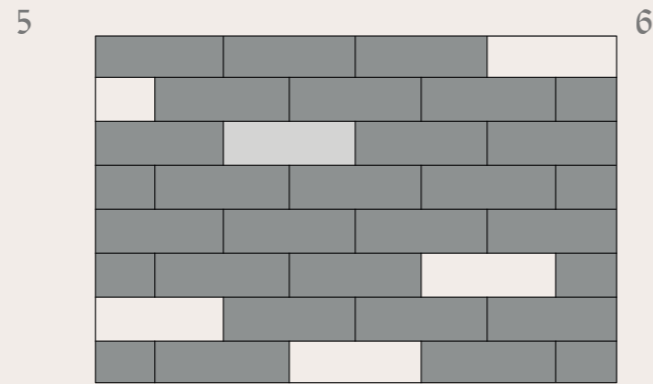
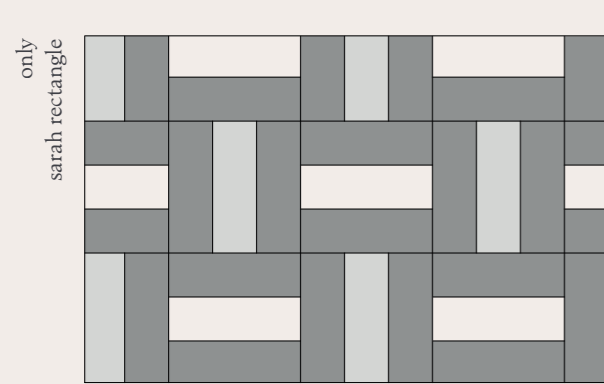
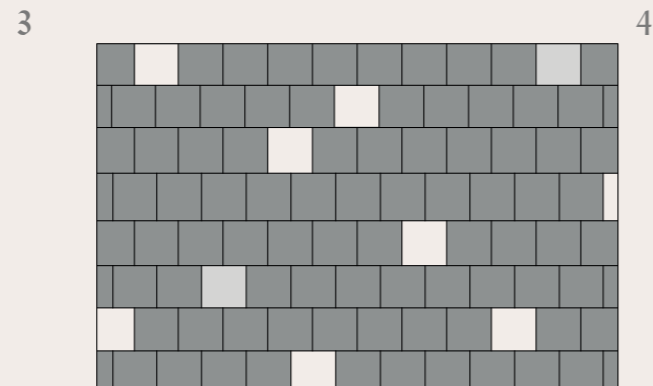
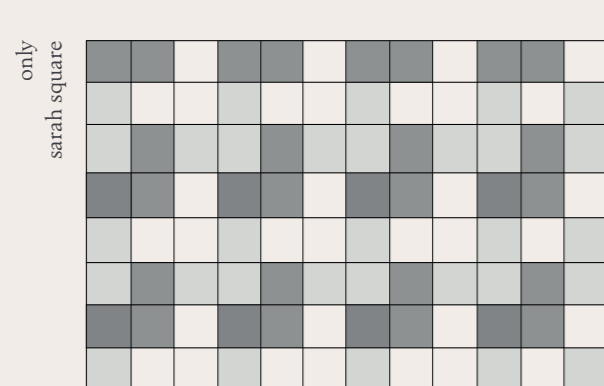
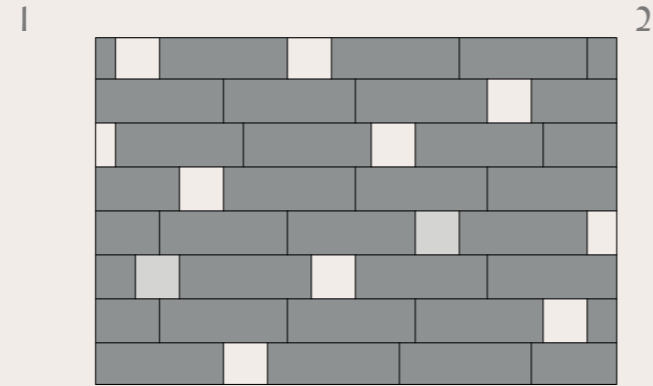
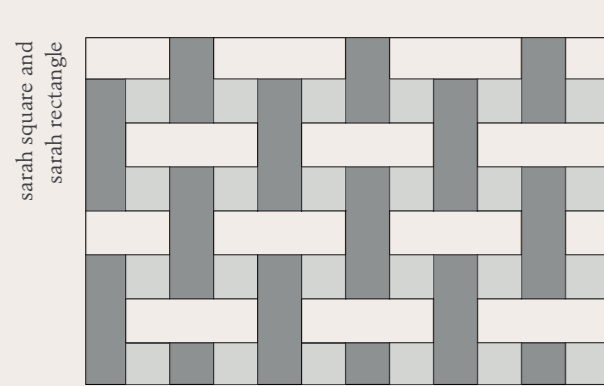
sarah by MAISON SARAH LAVOINE



Theia and Maison Sarah Lavoine have partnered to create a collection of gem-like tiles. There are two graphic models that can be combined to create an array of displays.



placement suggestions



sarah

\*Sarah is a registered design



Sarah square



Sarah rectangle

technical information

Handmade tiles  
w 8 cm x h 8 cm x d 2 cm  
w 3" x h 3" x d 0,8"  
156 units per sqm  
weight:  
170 gr  
0,37 lb  
m<sup>2</sup> — 25 kg  
sqm — 55,2 lb

Handmade tiles  
w 24 cm x h 8 cm x d 2 cm  
w 9" x h 3" x d 0,8"  
64 units per sqm  
weight:  
430 gr  
0,95 lb  
m<sup>2</sup> — 22 kg  
sqm — 48,5 lb

\* all the sizes are approximate

\* all the sizes are approximate

colours





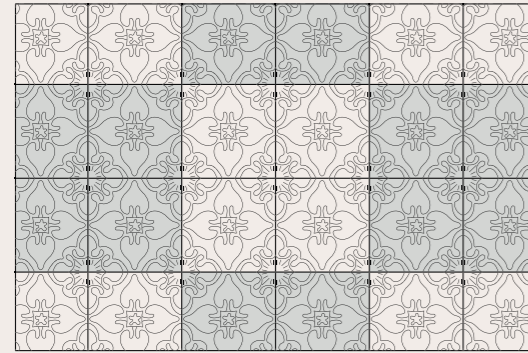
## pattern



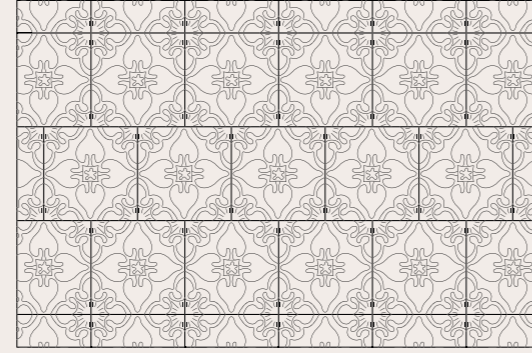
Sensual and evocative, this art nouveau tile transports you to a time of romance. The Pattern tile is embedded in the mystique of a bygone era and once out of its original context can help create the most modern of spaces.



pattern

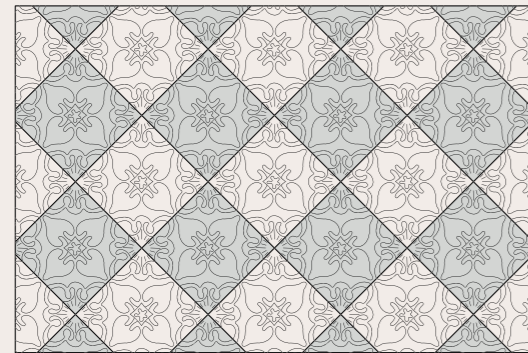


1



2

placement suggestions



3

pattern

\*Pattern is a registered design



technical information

Handmade tiles  
 w 15 cm x h 15 cm x d 1 cm  
 w 5,9" x h 5,9" x d 0,4"  
 45 units per sqm  
 weight:  
 380 gr  
 0,84 lb  
 m<sup>2</sup> — 17,1 kg  
 sqm — 37,8 lb

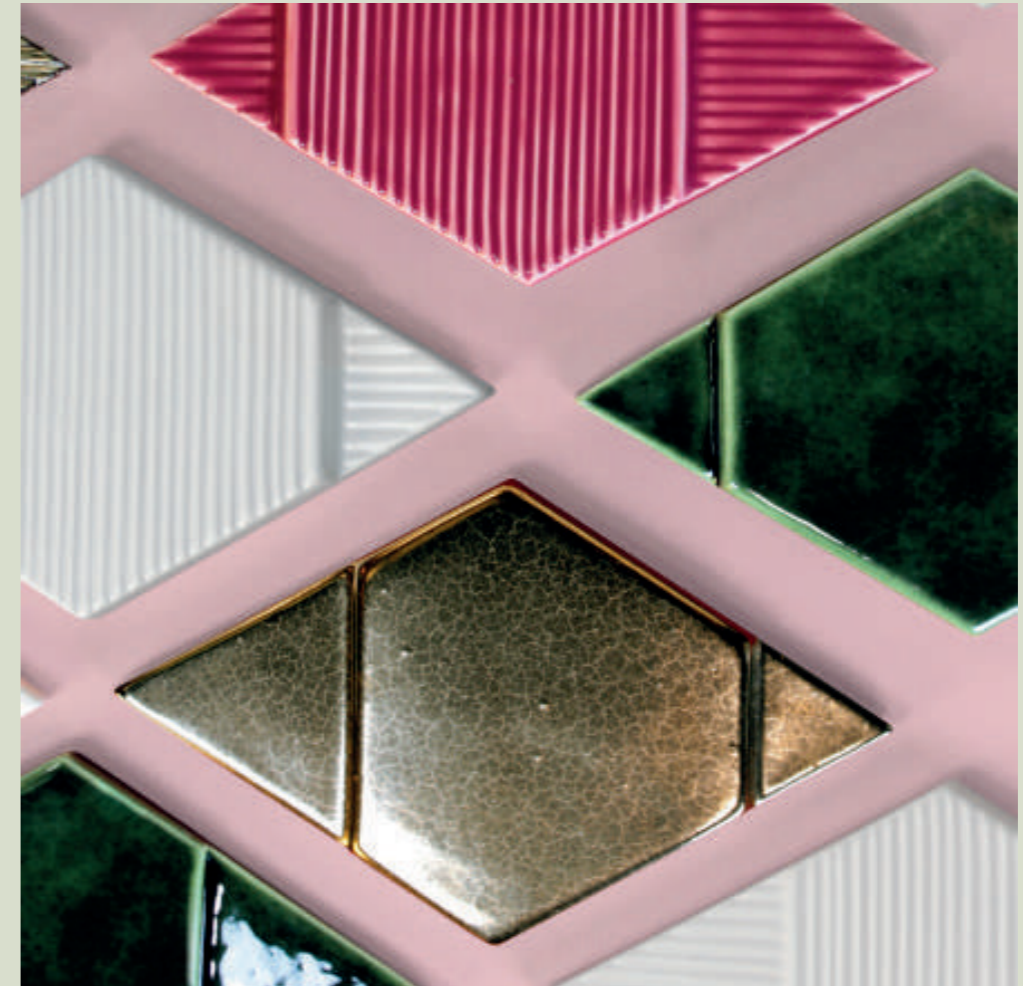
\* all the sizes are approximate

colours





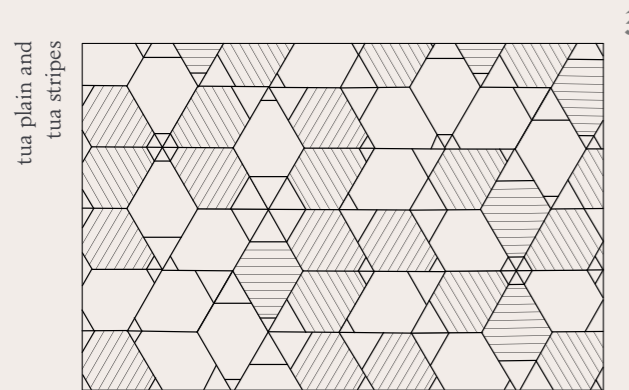
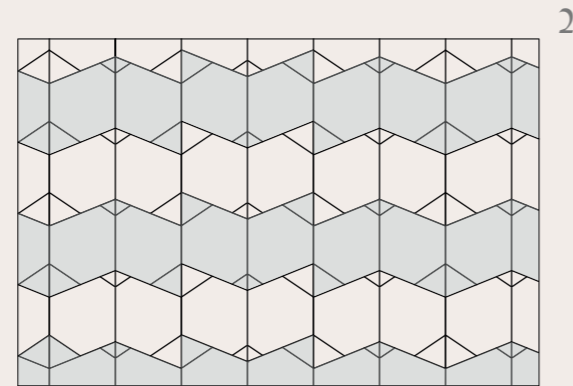
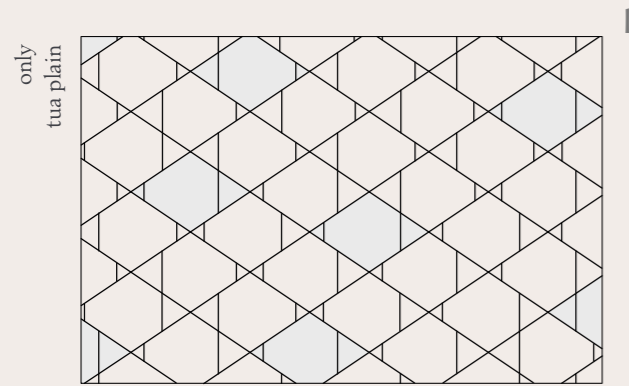
tua



The Tua collection is composed by two tiles: Tua Plain, which is flat surfaced, and Tua Stripes, equal in shape but composed by slightly asymmetric lines that give a strong sense of movement. Both tiles play with volumetry, allowing the same tile to unfold in an array of shapes.

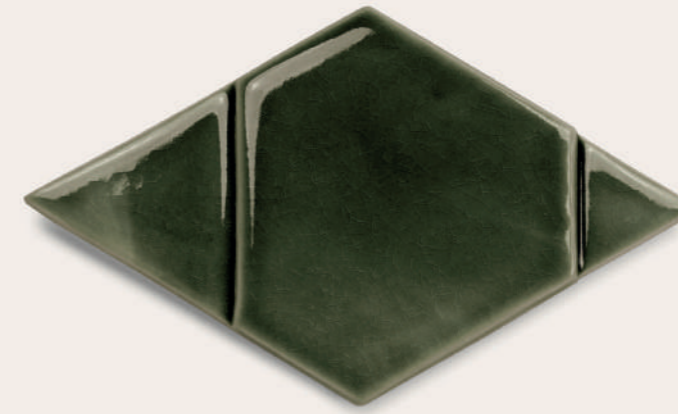


placement suggestions



tua

\*Tua is a registered design

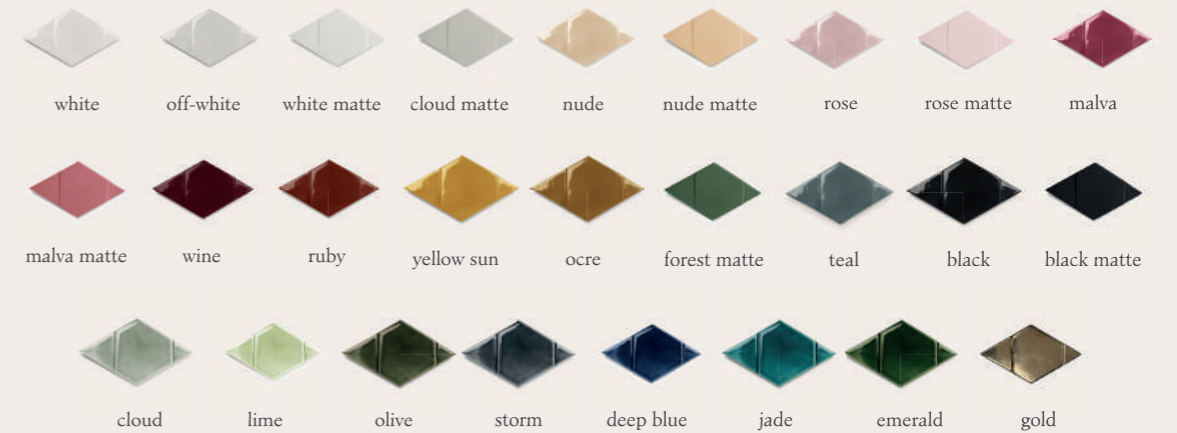


technical information

Handmade tiles  
w 16 cm x h 28 cm x d 2 cm  
w 6,3" x h 11" x d 0,8"  
42 units per sqm  
weight:  
635 gr  
1,4 lb  
m<sup>2</sup> — 26,7 kg  
sqm — 58,8 lb

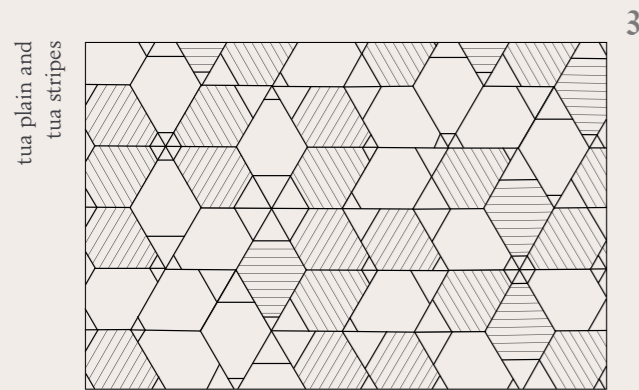
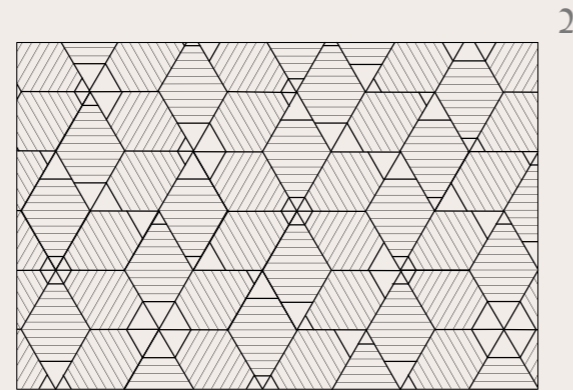
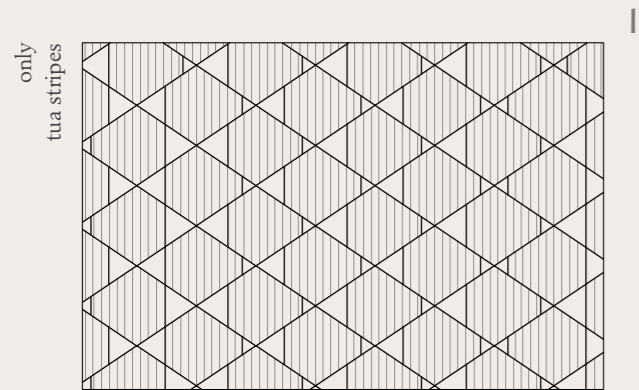
\* all the sizes are approximate

colours



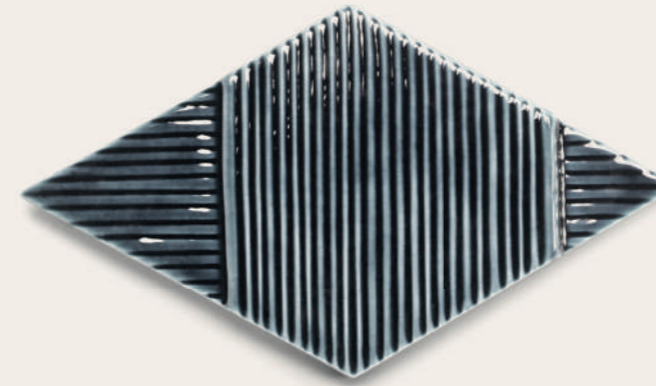


placement suggestions



tua stripes

\*Tua stripes is a registered design



technical information

Handmade tiles  
w 16 cm x h 28 cm x d 2 cm  
w 6,3" x h 11" x d 0,8"  
42 units per sqm  
weight:  
635 gr  
1,4 lb  
m<sup>2</sup> — 26,7 kg  
sqm — 58,8 lb

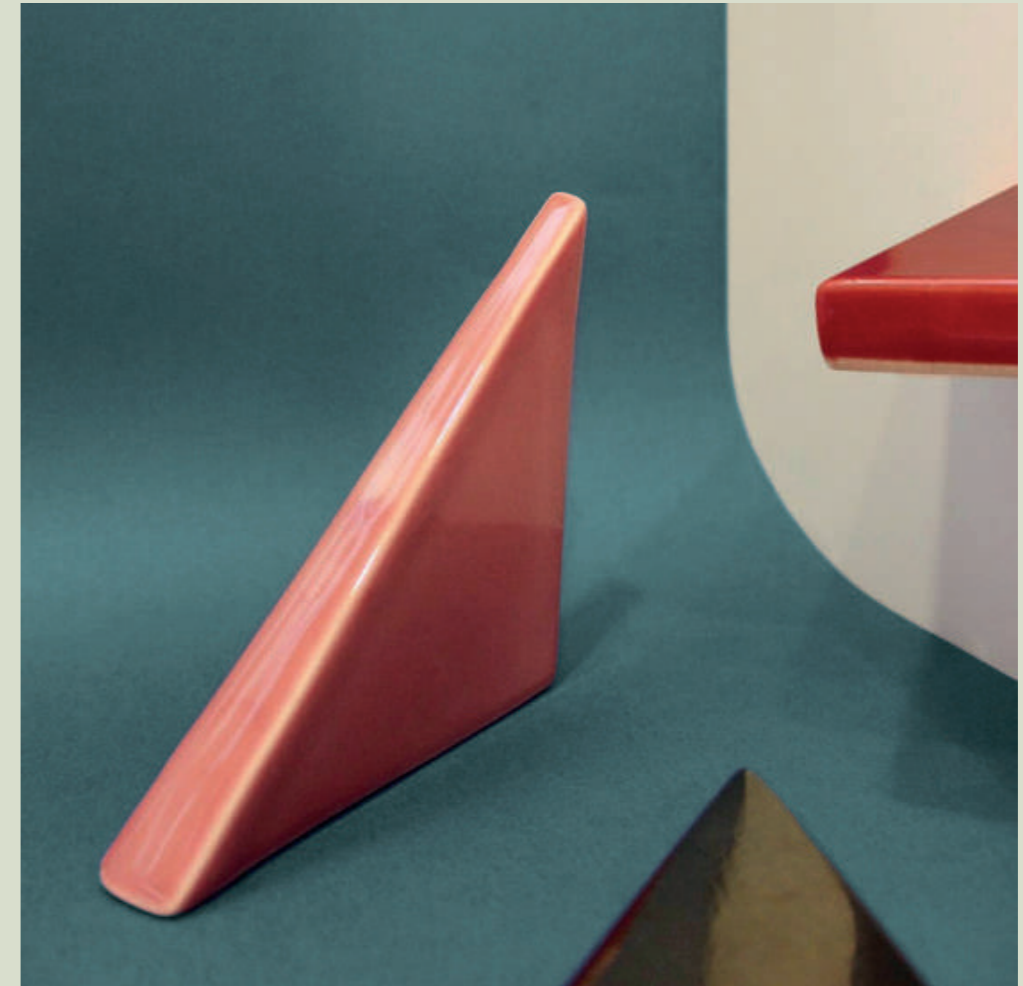
\* all the sizes are approximate

colours





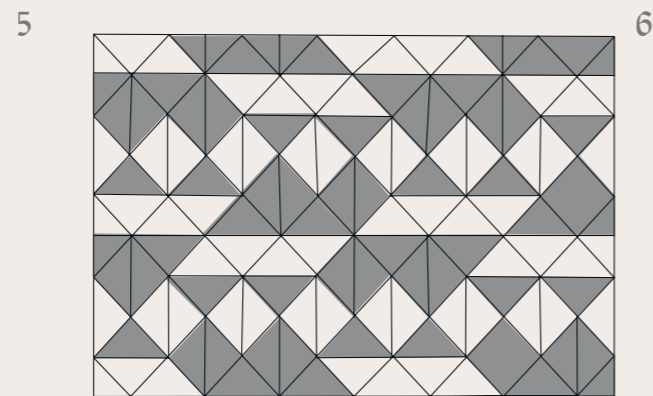
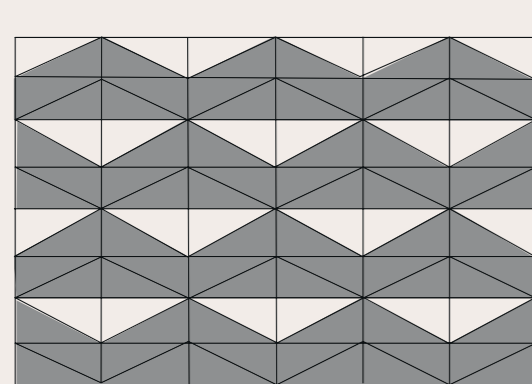
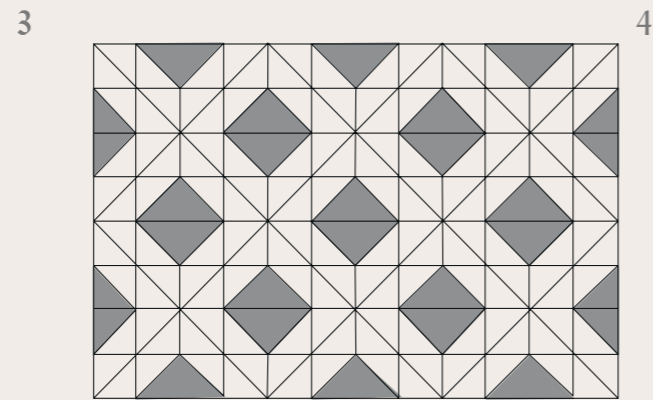
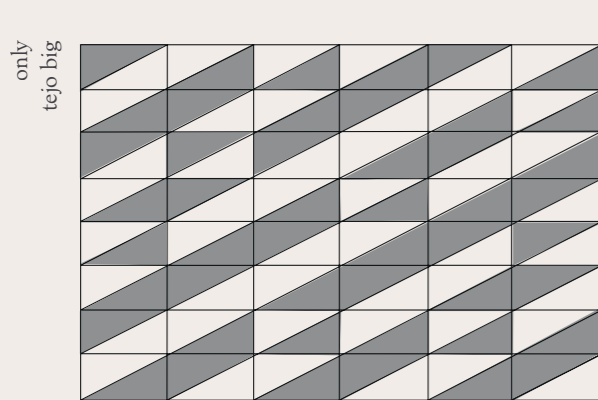
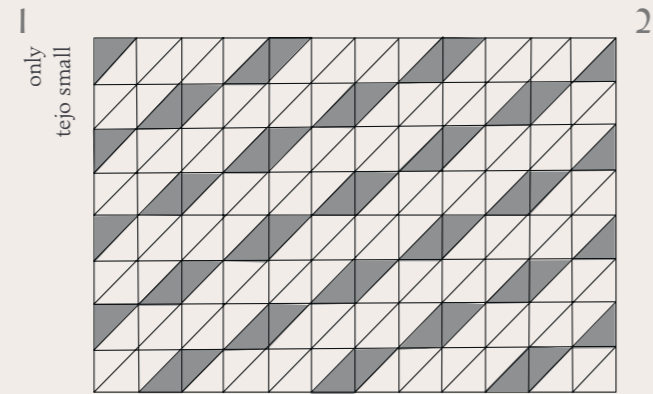
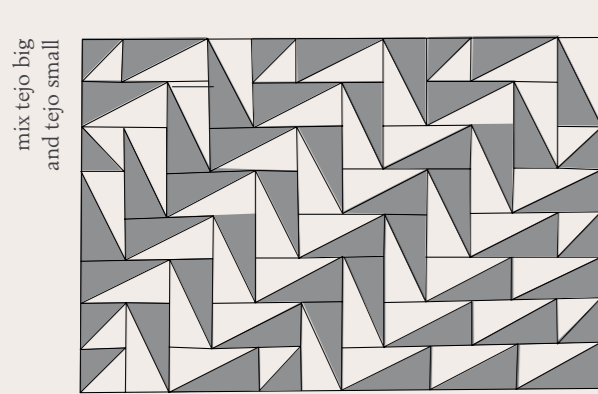
tejo



Tejo is rooted in the ancient Portuguese nautical tradition. An iconic collection inspired by the ocean, composed of two tiles with different sizes, which together create a vibrating play of delicate shadows over the mosaic's regular surface.



placement suggestions



tejo

\*Tejo is a registered design



Tejo small



Tejo big

technical information

Handmade tiles  
w 12,5 cm x h 12,5 cm x d 2 cm  
w 5" x h 5" x d 0,8"  
128 units per sqm 64 flat plus  
64 tridimensional  
weight:  
200 gr  
0,44 lb  
m<sup>2</sup> — 25,6 kg  
sqm — 56,3 lb

Handmade tiles  
w 25 cm x h 12,5 cm x d 2 cm  
w 10" x h 5" x d 0,8"  
64 units per sqm  
weight:  
290 gr  
0,64 lb  
m<sup>2</sup> — 18,6 kg  
sqm — 40,9 lb

\* all the sizes are approximate

\* all the sizes are approximate

colours





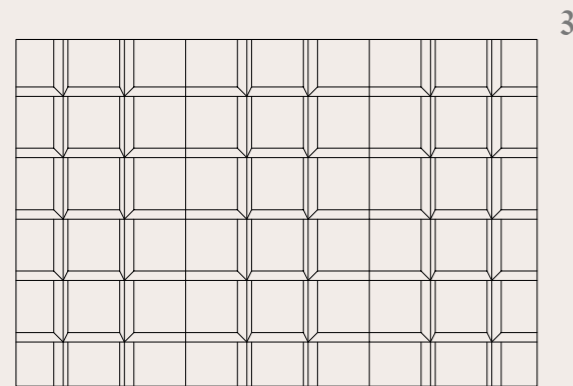
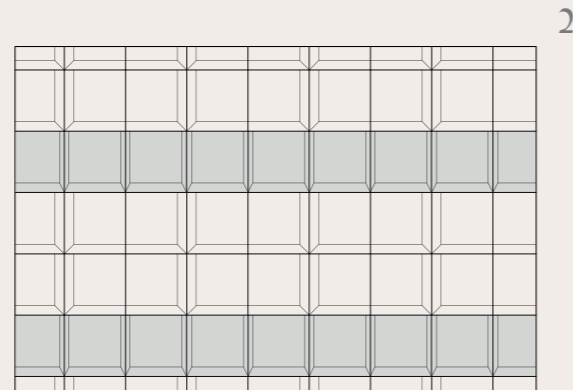
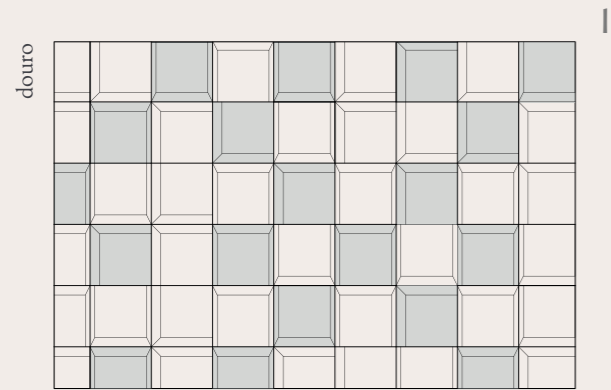
## douro



The Douro tiles are homonymous to the northern Portuguese river, named after gold itself. With two different tiles, each with different tilted corners, their shape mimics the gentle movement of water.

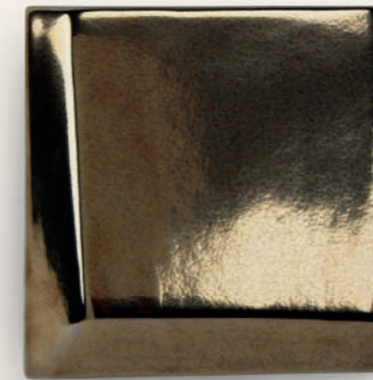


placement suggestions



douro

\*Douro is a registered design

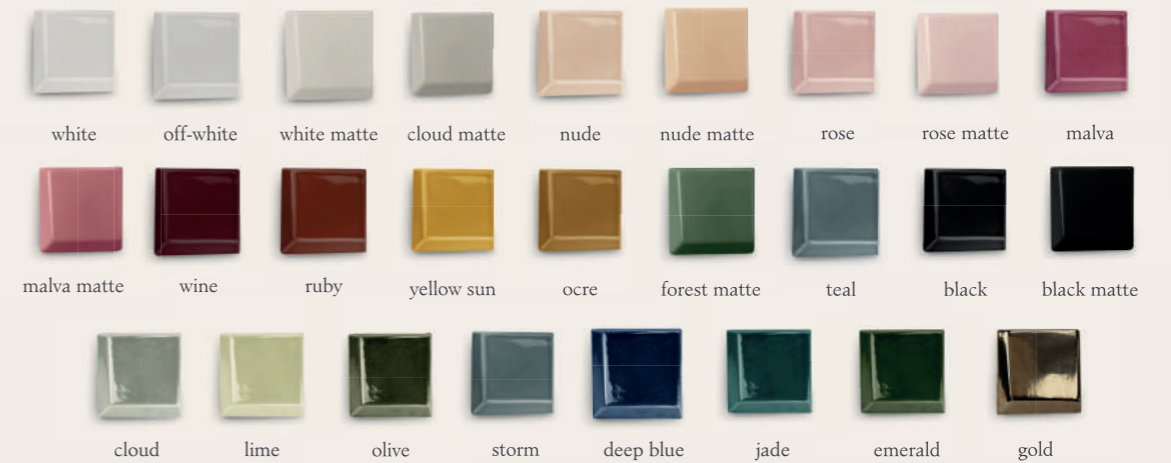


technical information

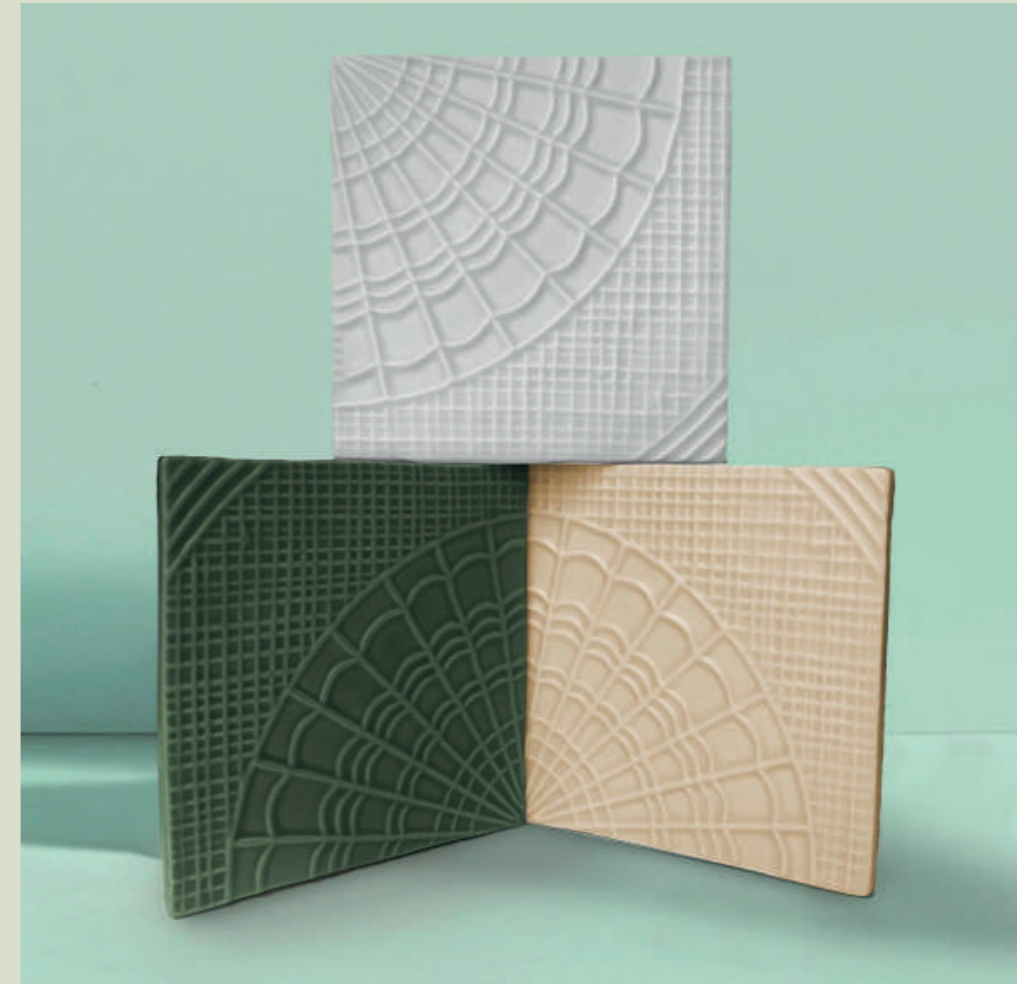
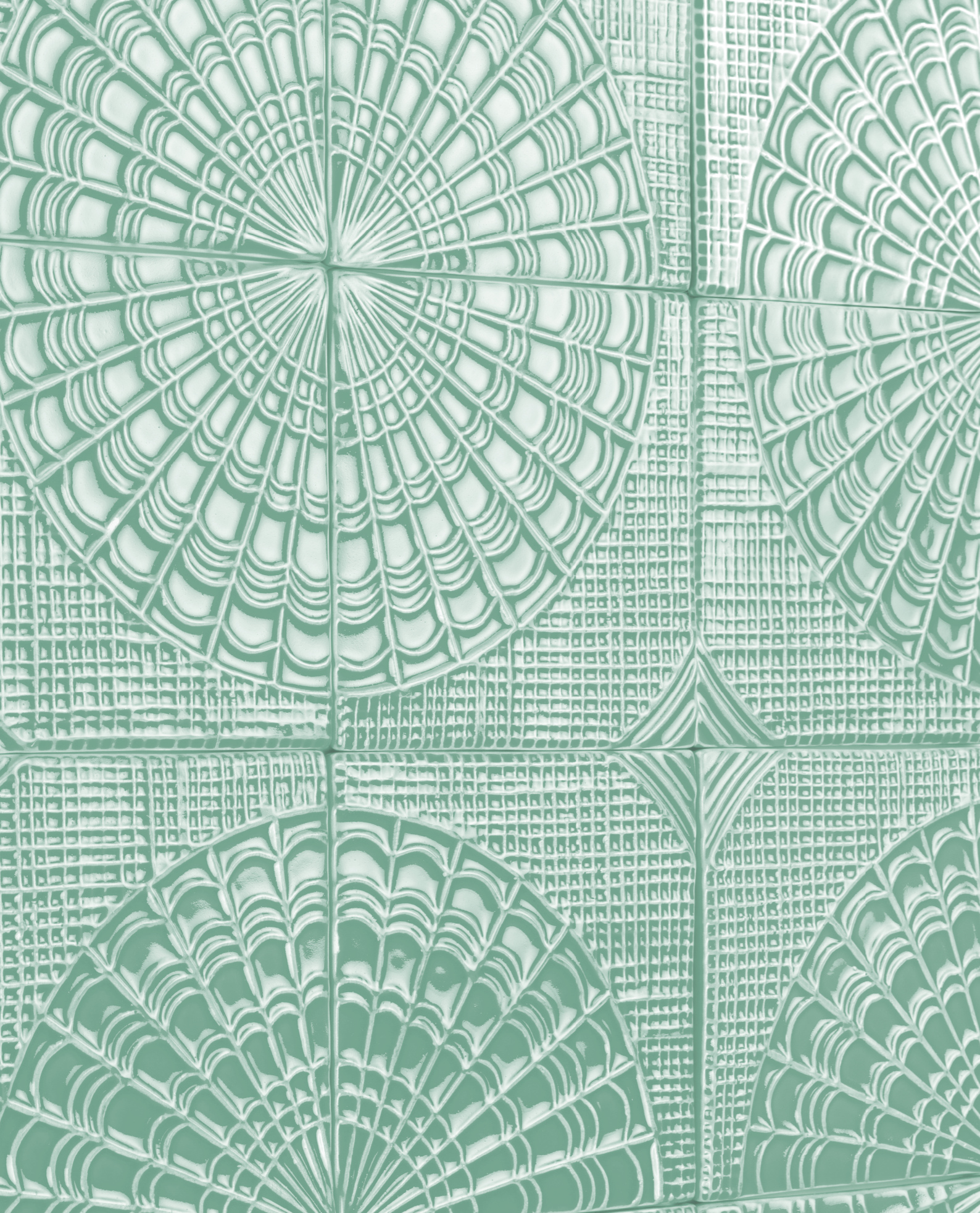
Handmade tiles  
 w 10 cm x h 10 cm x d 2 cm  
 w 4" x h 4" x d 0,8"  
 100 units per sqm  
 weight:  
 240 gr  
 0,53 lb  
 m<sup>2</sup> — 24 kg  
 sqm — 53 lb

\* all the sizes are approximate

colours



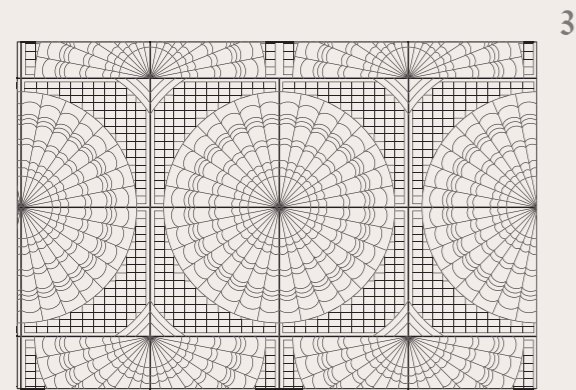
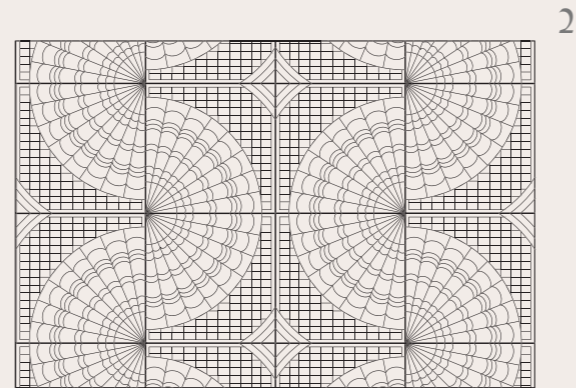
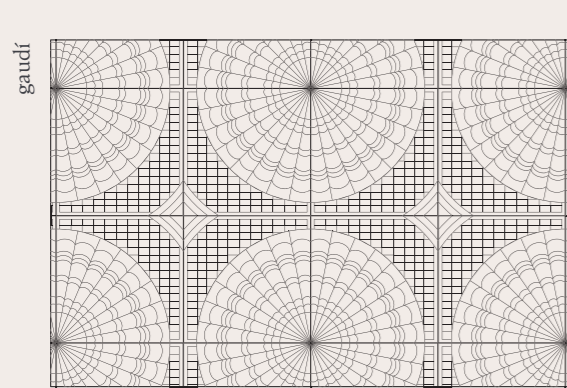
gaudí



Laced blankets, crochet throws and knitted mantles are at the heart of Gaudí. Handmade is the focal point to the Gaudí tile, where soft lines create a weft for an intricate lace to evolve. The result is a tile which is antique in its look, but contemporary in its use.

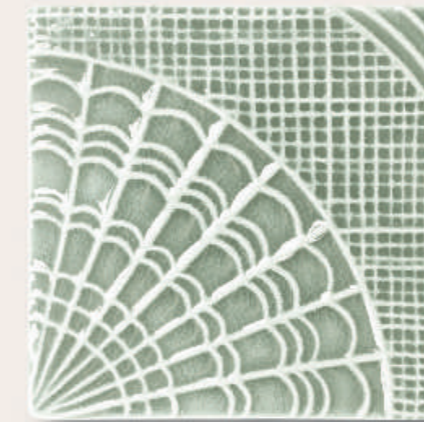


placement suggestions



gaudí

\*Gaudí is a registered design

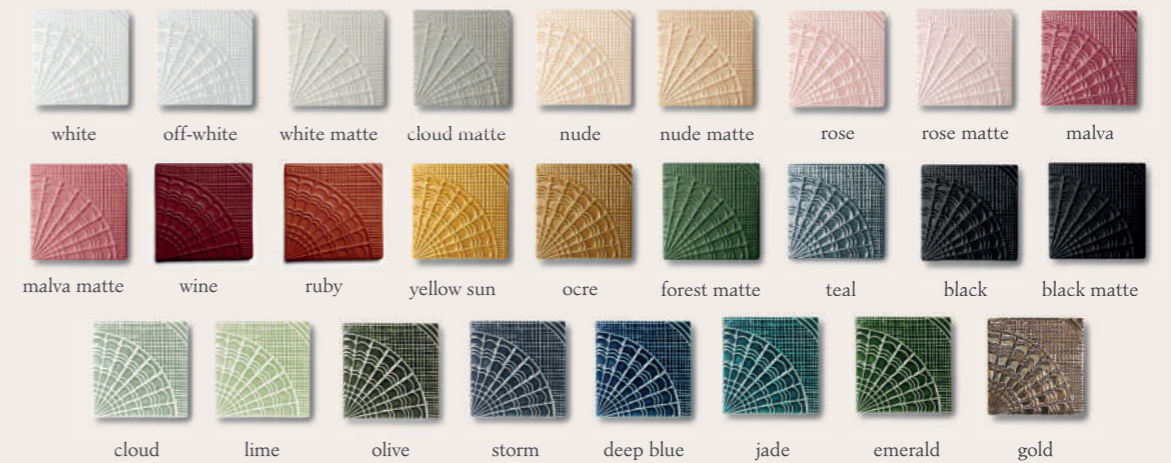


technical information

Handmade tiles  
 w 15 cm x h 15 cm x d 1 cm  
 w 5,9" x h 5,9" x d 0,4"  
 45 units per sqm  
 weight:  
 380 gr  
 0,84 lb  
 m<sup>2</sup> — 17,1 kg  
 sqm — 37,8 lb

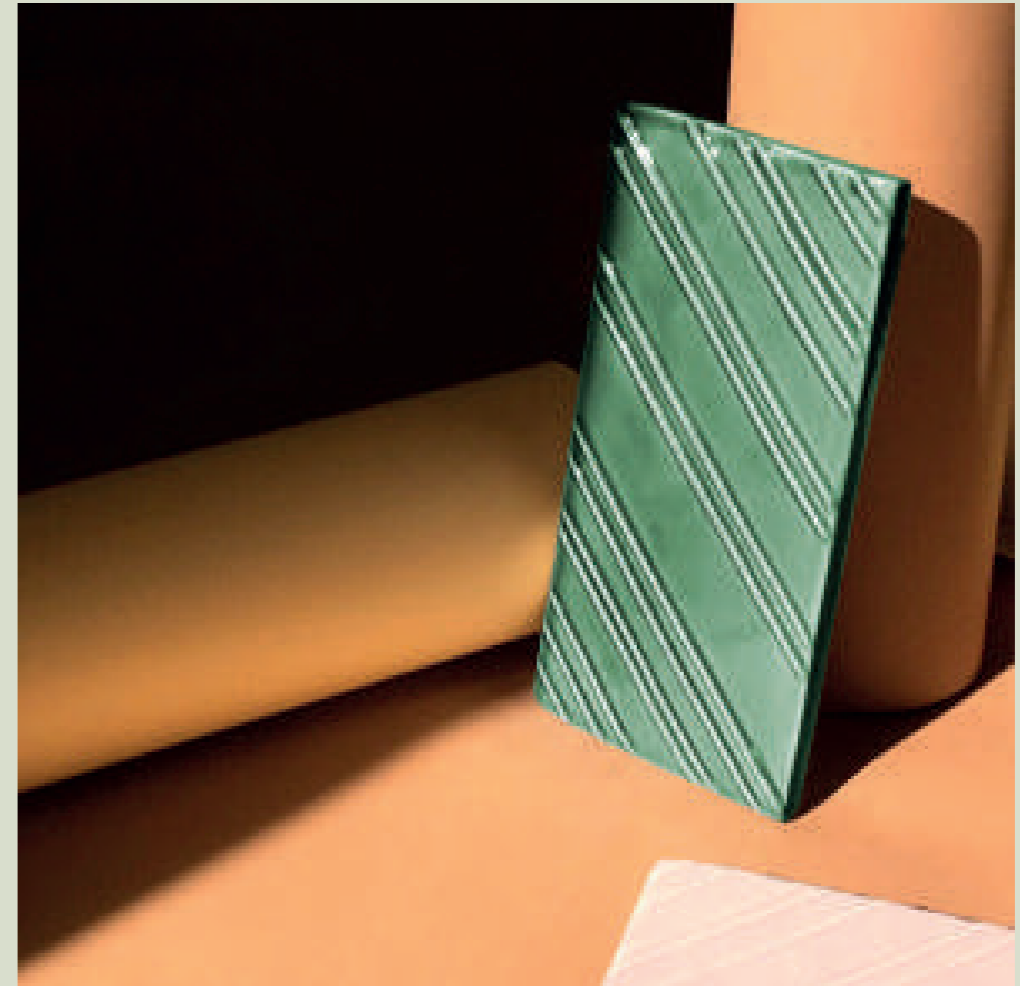
\* all the sizes are approximate

colours





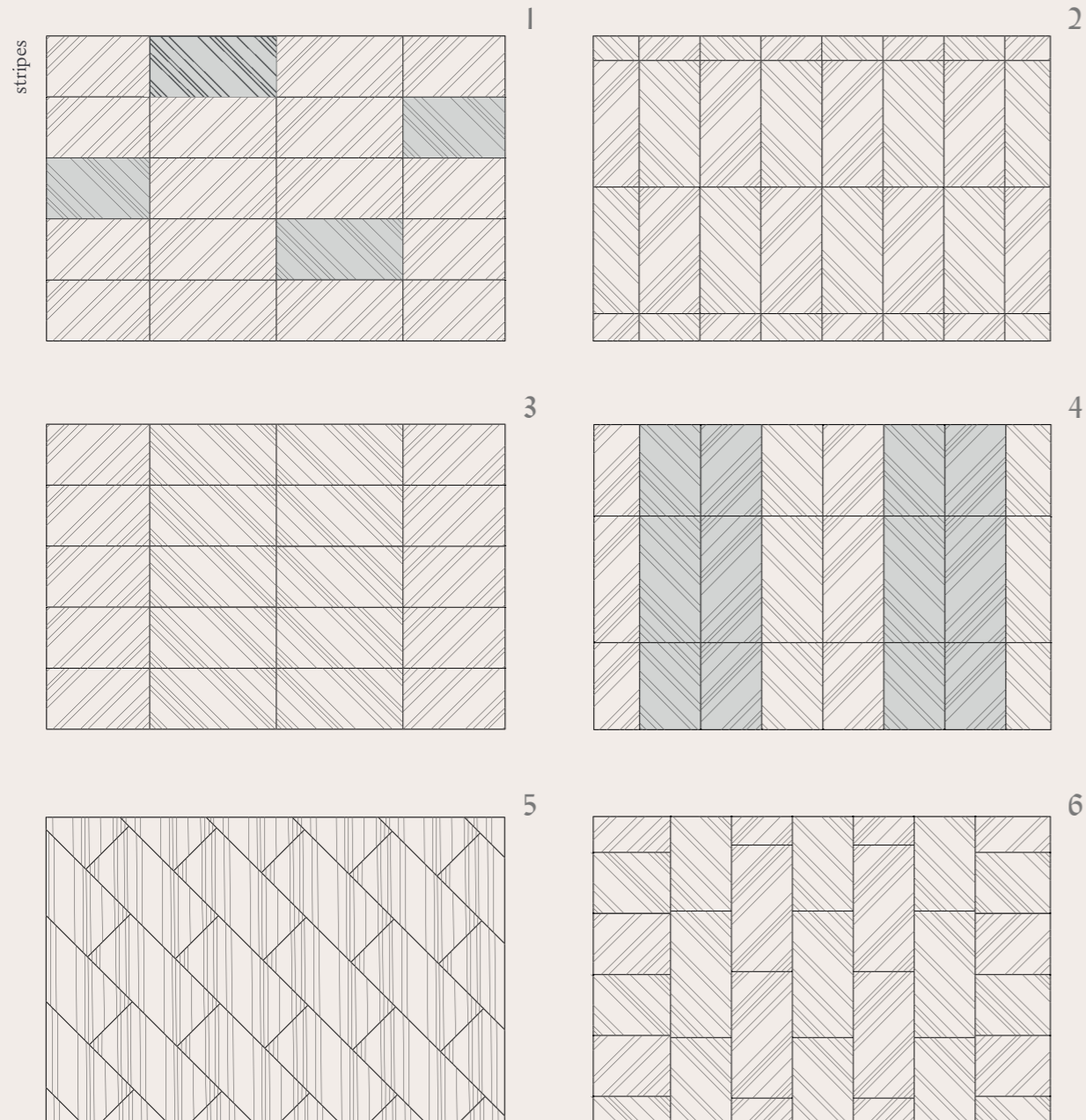
## stripes



Stripes pays homage to the 1960's. There are two tile designs with different striped patterns, which together can create an immensity of designs, from profuse rhombus to elegant stripes.

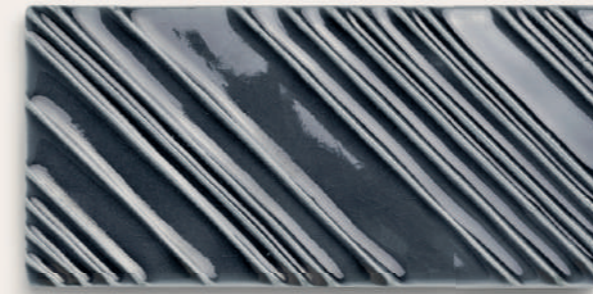


placement suggestions



stripes

\*Stripes is a registered design



technical information

Handmade tiles  
 w 20 cm x h 10 cm x d 1 cm  
 w 7,9" x h 4" x d 0,4"  
 50 units per sqm  
 weight:  
 380 gr  
 0,84 lb  
 m<sup>2</sup> — 19 kg  
 sqm — 42 lb

\* all the sizes are approximate

colours





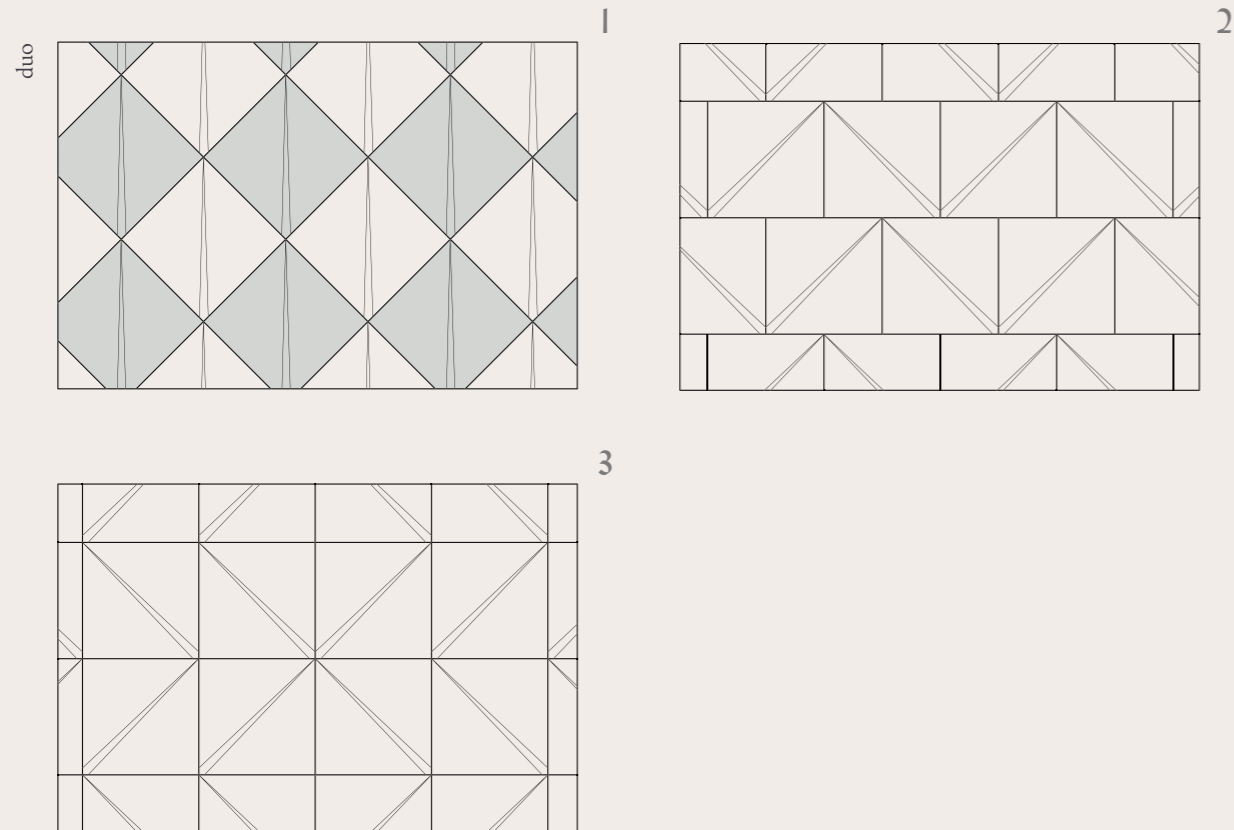
## duo



Duality is essential in this tile. One flat surface and another tilted, Duo plays with the idea of opposites. Large and strongly built, it is ideal for large areas; it can be used in more than one color to accentuate its ambivalent traces, or in a solid color to let its contours shine.



placement suggestions



duo

\*Duo is a registered design



technical information

Handmade tiles  
 w 20 cm x h 20 cm x d 4 cm  
 w 7,9" x h 7,9" x d 1,6"  
 25 units per sqm  
 weight:  
 970 gr  
 2,14 lb  
 m<sup>2</sup> — 24,25 kg  
 sqm — 53,5 lb

\* all the sizes are approximate

colours





tile panels



## terra cota

\*Milano is a registered design



### technical information

Handmade tiles in a lacquered wood frame  
in ivory, bronze, gold or black  
w 135 cm x h 95 cm x d 4 cm  
w 53" x h 37" x d 1,5"  
weight:  
46 kg  
100 lb

Terra Cota tiles panels are available in a range of different finishes.  
See all color options at page 96.

## terra dawn

\*Milano is a registered design



### technical information

Handmade tiles in a lacquered wood frame  
in ivory, bronze, gold or black  
w 135 cm x h 95 cm x d 4 cm  
w 53" x h 37" x d 1,5"  
weight:  
46 kg  
100 lb

Terra Dawn tiles panels are available in a range of different finishes.  
See all color options at page 96.

## tua

\*Tua is a registered design



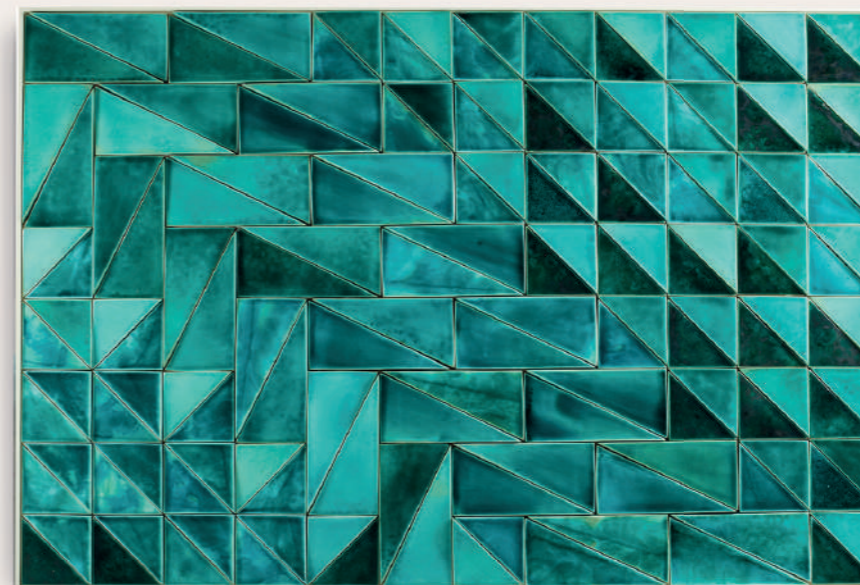
### technical information

Handmade tiles in a lacquered wood frame  
in ivory, bronze, gold or black  
w 100 cm x h 150 cm x d 4 cm  
w 39" x h 59" x d 1,5"  
weight:  
46 kg  
100 lb

Tua tiles panels are available in a range of different finishes.  
See all color options at page 96.

## tejo

\*Tejo is a registered design



### technical information

Handmade tiles in a lacquered wood frame  
in ivory, bronze, gold or black  
w 100 cm x h 150 cm x d 4 cm  
w 39" x h 59" x d 1,5"  
weight:  
56 kg  
124 lb

Tejo tiles panels are available in a range of different finishes.  
See all color options at page 96.

## douro

\*Douro is a registered design



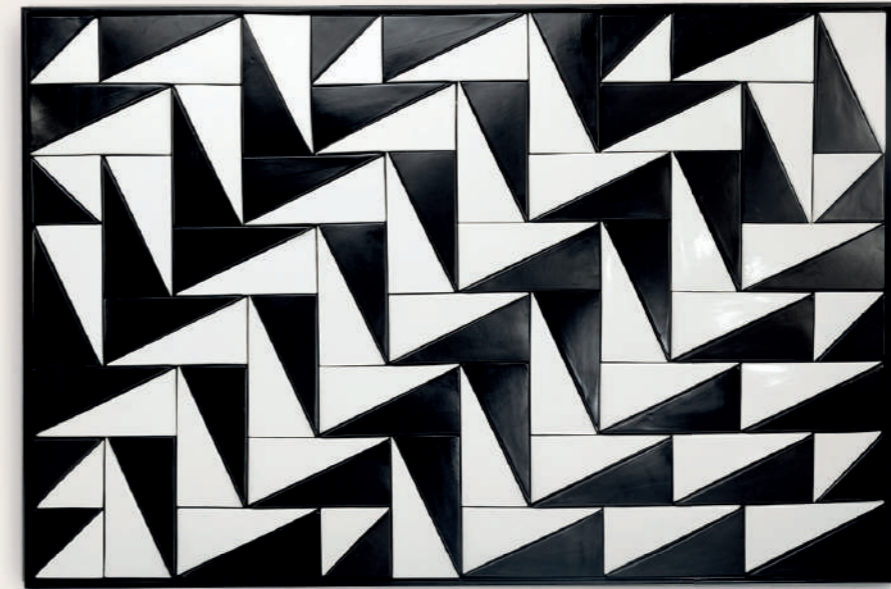
### technical information

Handmade tiles in a lacquered wood frame  
in ivory, bronze, gold or black  
w 100 cm x h 150 cm x d 4 cm  
w 39" x h 59" x d 1,5"  
weight:  
60 kg  
133 lb

Douro tiles panels are available in a range of different finishes.  
See all color options at page 96.

## tejo black & white I

\*Tejo Black & White is a registered design

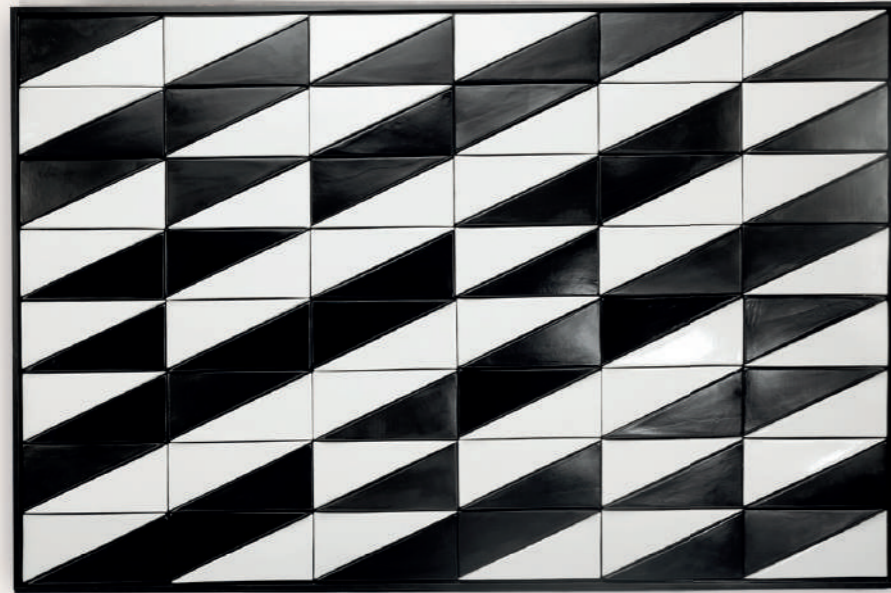


### technical information

Handmade tiles in a lacquered wood frame  
in ivory, bronze, gold or black  
w 100 cm x h 150 cm x d 4 cm  
w 39" x h 59" x d 1,5"  
weight:  
58 kg  
128 lb

## tejo black & white 2

\*Tejo Black & White is a registered design

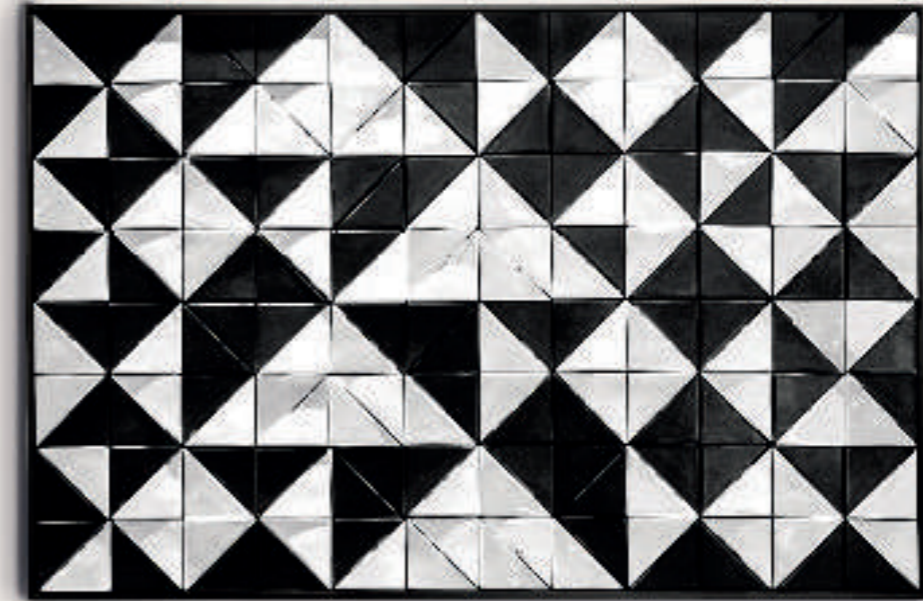


### technical information

Handmade tiles in a lacquered wood frame  
in ivory, bronze, gold or black  
w 100 cm x h 150 cm x d 4 cm  
w 39" x h 59" x d 1,5"  
weight:  
50 kg  
110 lb

## tejo black & white 3

\*Tejo Black & White is a registered design



### technical information

Handmade tiles in a lacquered wood frame  
in ivory, bronze, gold or black  
w 100 cm x h 150 cm x d 4 cm  
w 39" x h 59" x d 1,5"  
weight:  
60 kg  
132 lb



One & Only Hotel,  
Maldivas

## sample box



### technical information

w 40 cm x h 40 cm x d 40 cm  
 w 16" x h 15" x d 16"  
 weight:  
 20 kg  
 44 lb

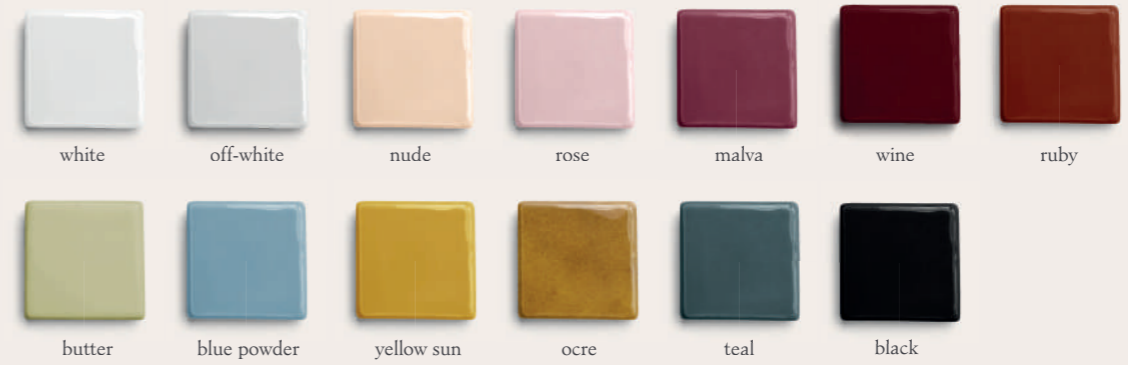
Contact your sales manager to get one.  
[See all about it here ►](#)

## FINISHES

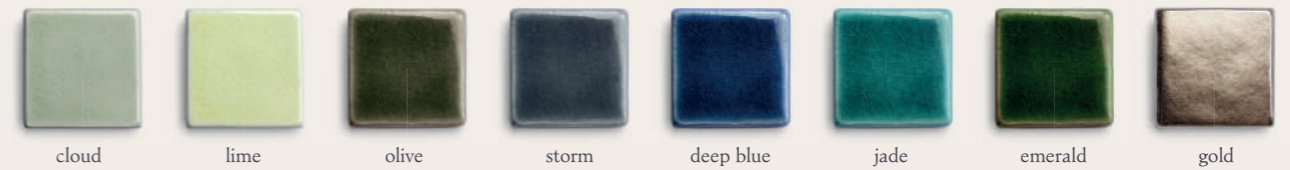
### matte



### glossy



### craquelet



### wood and metal

\*For tile panels frames.



\*Not all colors are suitable for high humidity areas. Ask your account manager for more information.

