

FORNASETTI
SENZA TEMPO II

SOLI

SOLI E
NUVOLE

VISTA
MEDITERRANEA

TECHNICAL
SPECIFICATION

CAMMEI

CONCHIGLIE

FRUTTA E
GEOMETRICO

GEOMETRICO

RAMO DI
ORTENSIA

ORTENSIA

FOGLIE E
SCIMMIE

FOGLIE E
CIVITTE

PAGINATION
SHEET

CONTACT US



BY APPOINTMENT TO HER MAJESTY THE QUEEN
SUPPLIERS OF WALLPAPER, COLE & SON (WALLPAPERS) LTD, LONDON

Cole & Son®

COLOUR · PATTERN · EXCEPTIONAL WALLPAPERS

FORNASETTI

• senza tempo II •

COLLECTION GUIDE



Cole & Son®

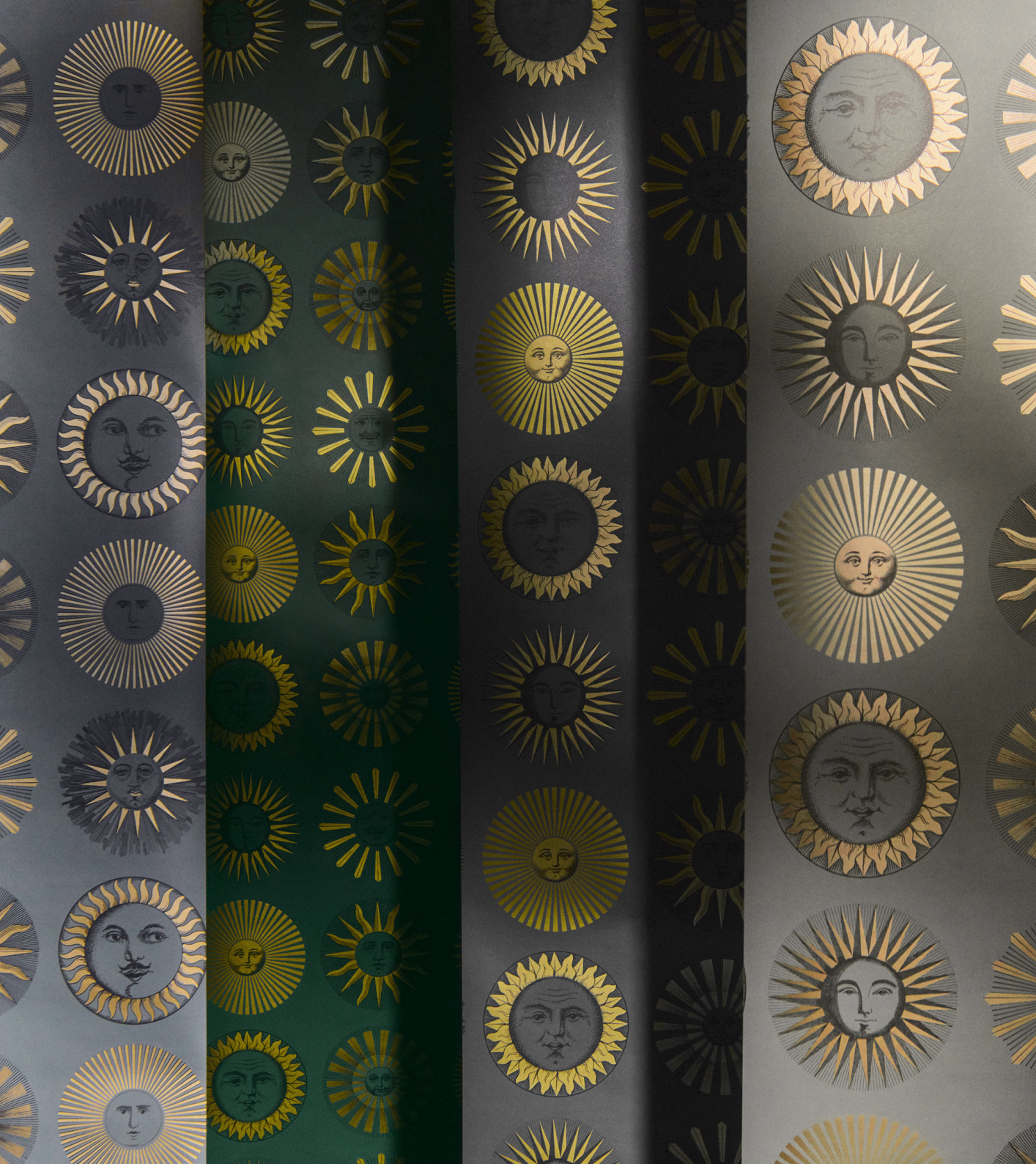
COLOUR · PATTERN · EXCEPTIONAL WALLPAPERS

Innovative, intelligent, artistic design is founded upon a strong heritage of craftsmanship. The Design House of Cole & Son has been creating original and exceptional wallcoverings since 1875 in London, an area renowned for its artisanal production and hand block printing.

Today, the Cole & Son archive is a beautiful and inspiring chronicle of artistic styles and expressions spanning the 18th Century to modern day. Consisting of approximately 2,000 block print designs, 500 screen print patterns and a vast quantity of original drawings and wallpapers. The archive and log of commissions attest to some of the most important decorating schemes of the 19th and 20th Centuries; from stately homes such as Chatsworth House, Blickling Hall and Audley End to Buckingham Palace, Kensington Palace, Windsor Castle and the wallpaper designs of A.W. Pugin featured in the Palace of Westminster – a collection which is still faithfully maintained today.

On occasion, this extensive archive is a source of inspiration for new designs within collections. Elements from historic prints and patterns are carefully selected, adapted and coloured by the Cole & Son Design House artists and printed by craftsmen to produce wallpapers faithful to the character of the original document, yet contemporary in feel.

With a commitment and passion for design excellence, the Design House of Cole & Son is dedicated to creating beautifully detailed wallcoverings and fabrics; combining colour and pattern to create unique, distinctive and inviting interiors.



FORNASETTI

Fornasetti is the Italian atelier that is internationally recognised for the design and decoration of pieces of furniture and home accessories.

In this place where art meets design, timeless creations come to life, ready to inspire the imagination. The decorations play with shapes and turn everyday objects into multiples of art.

The world of Fornasetti floats between imagination and reality, enriched by cultural references and artistic allusions. This is why a Fornasetti object is not simply something to possess, it is something to live and be inspired by.

The Atelier was founded in Milan in the 1940s by Piero Fornasetti, a versatile and eclectic artist distinguished by an unstoppable creative flair that made him one of the most prolific figures of the twentieth century in Italy. Barnaba Fornasetti, Artistic Director and guardian of his father Piero's legacy, has kept the dream unchanged over the last thirty years.

In the Fornasetti Atelier in Milan every object is still created using the original techniques of expert Italian craftsmanship. Hands at the service of ideas, respecting the protracted times of artistic crafts and the secrets of savoir-faire: it all comes together to make Fornasetti creations unique. In this place inspirations, sketches and dreams take on physical form and are elevated to become art objects.



Cole & Son®

COLOUR · PATTERN · EXCEPTIONAL WALLPAPERS

FORNASETTI

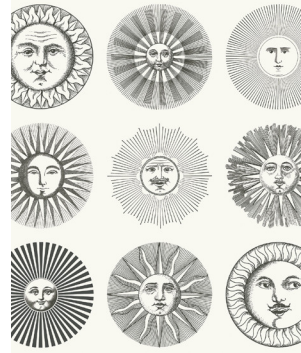
• senza tempo II •

British hand-crafted artistry meets Italian wit and imagination in the latest volume of the enduring partnership between the design house of Cole & Son and Fornasetti, the iconic Milanese Atelier.

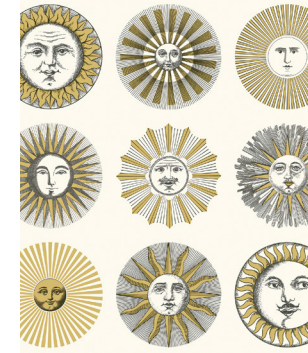
The collector's curiosities are again transformed into distinguished wallcoverings. Fruits of nature in all their glorious forms take a flight of fancy into interior decor. Studies of nature from selections of shells to lush foliage, curious creatures, and the sky come together making the everyday spectacular.

Artisans from both houses create a unique magic with endless creativity and a truly timeless aesthetic; every design is effortlessly *Senza Tempo*.

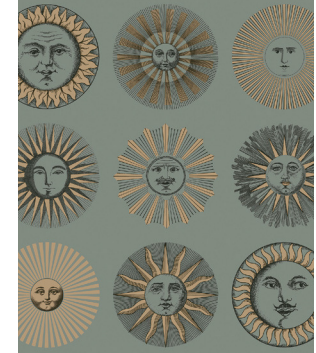
SOLI



SOLI 123/1001
Black & White



SOLI 123/1002
Cream & Gold



SOLI 123/1003
Sage & Rose Gold



SOLI 123/1004
Midnight & Soft Gold



SOLI 123/1005
Emerald & Gold

SOLI

A classic of the Atelier's portfolio, the sun occupies a privileged position in the Fornasetti repertoire of natural forms and is one of the major motifs in the Atelier's visual universe. A predilection in part justified by the fact that for years in the early 1940s, at the request of Gio Ponti, Piero Fornasetti designed almanacs on a lunar theme to be given as Christmas gifts.

There are several variations of this star within the Fornasetti universe, from fabrics to porcelain, accessories, and pieces of furniture.

Presented as a striking repeat of shining faces, *Soli's* colour palettes range from a strikingly simple monochrome to a rich emerald green with radiant golden suns.

SOLI

SOLI E
NUVOLE

VISTA
MEDITERRANEA

TECHNICAL
SPECIFICATION

CAMMEI

CONCHIGLIE

FRUTTA E
GEOMETRICO

GEOMETRICO

RAMO DI
ORTENSIA

ORTENSIA

FOGLIE E
SCIMMIE

FOGLIE E
CIVITTE

PAGINATION
SHEET

CONTACT US

SOLI E NUVOLE



SOLI E NUVOLE 123/2006
Yellow & Blue



SOLI E NUVOLE 123/2007
Black & White



SOLI E NUVOLE 123/2008
Gold & Silver on Charcoal



SOLI E NUVOLE 123/2009
Beige & Soft Gold



SOLI E NUVOLE 123/2010
Teal & Rose Gold



SOLI E NUVOLE 123/2011
Gold on Gold

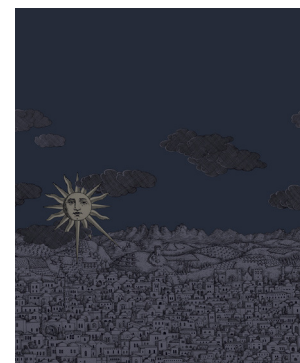
SOLI E NUVOLE

The inspiration of this print is 'Sole di Capri' a design created by Piero Fornasetti in the 50s. Piero Fornasetti long had a passion for Capri and created this iconic design from his imagination, before ever having visited the legendary island. Piero eventually took the family there on holiday and, during the 1960s, also opened a temporary Fornasetti boutique on the island. The original print is a combination of personified suns and stylized architecture, both typical of Fornasetti. The idea of pairing personified suns and clouds appears for the first time in a sketch for a headscarf that Piero drew in 1950. It is now a whimsical all-over print, bringing a unique quirk to an interior.

VISTA MEDITERRANEA



VISTA MEDITERRANEA 123/3012
Charcoal Sky



VISTA MEDITERRANEA 123/3013
Midnight with Silver Sun



VISTA MEDITERRANEA 123/3014
Blue Ombre Sky



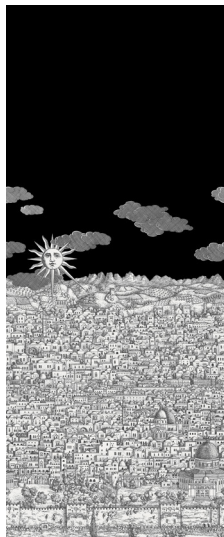
VISTA MEDITERRANEA 123/3015
Soft Neutral

VISTA MEDITERRANEA

A flight beyond the limits of the imagination lead Fornasetti to an enchanted, hypnotic Jerusalem. Multiple points of view overlap, with different architectural styles chasing each other in a continuous pattern. The precise black line of the buildings interprets a boundless imagination, creating an intriguing texture. The first dreamlike journey of this design took place on the 'Gerusalemme' wallpaper designed by Piero Fornasetti for the entrance hall of his Milan residence at the end of the 1940s. It was then later extended to trays, magazine racks, lamps, and pieces of furniture. A shining sun, peeking through the clouds, was added to the landscape in the early 90s, adding another fanciful element to this sprawling print.

A bright cerulean sky gives way to a deep tanzanite as the scene is taken from day to night, with the introduction of a lustrated mica for this midnight palette bringing the most subtle details to the fore.

TECHNICAL SPECIFICATION



VISTA MEDITERRANEA
123/3012
Charcoal Sky



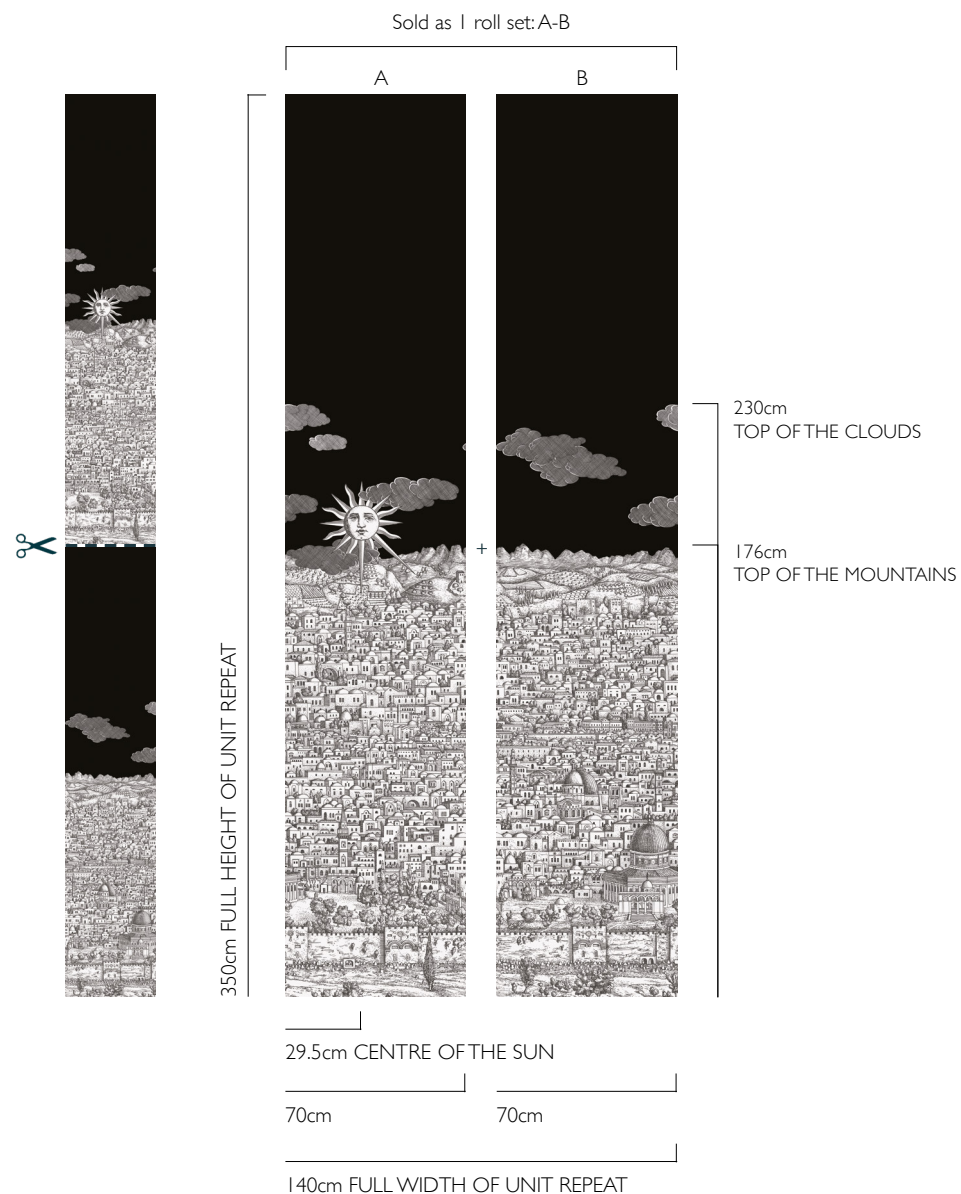
VISTA MEDITERRANEA
123/3013
Midnight with Silver Sun



VISTA MEDITERRANEA
123/3014
Blue Ombre Sky



VISTA MEDITERRANEA
123/3015
Soft Neutral



We recommend trimming from the top to fit any interior to ensure no buildings are cut off

CAMMEI



CAMMEI 123/4016
Antique Gold on Olive



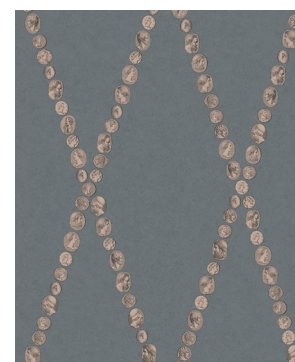
CAMMEI 123/4017
Silver on Ink



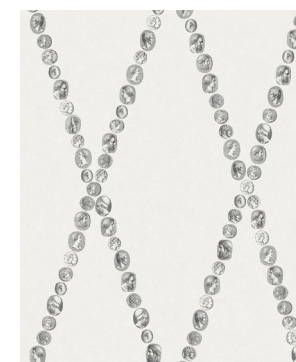
CAMMEI 123/4018
Gold on Charcoal



CAMMEI 123/4019
Soft Gold on Stone



CAMMEI 123/4020
Slate & Rose Gold



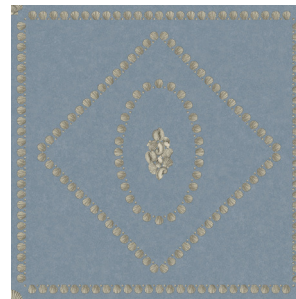
CAMMEI 123/4021
Black & White

CAMMEI

Piero Fornasetti was the consummate collector with a plethora of cameos certainly forming part of his vast collection of curiosities. The *Cammei* theme is dear to Fornasetti and is an homage to Classicism.

This elegant design has been used on a multitude of Fornasetti pieces: from teacups and other ceramic pieces to trays and screens. It has also proved very successful on tabletops, so much so that Fornasetti has produced several variations and colour combinations over the years. Evoking a visual universe that mixes various eras, this wallpaper illuminates a room with an eternal beauty.

CONCHIGLIE



CONCHIGLIE 123/5022
Silver on Denim



CONCHIGLIE 123/5023
Soft Gold on Charcoal



CONCHIGLIE 123/5024
Pearl on Parchment



CONCHIGLIE 123/5025
Gold on Stone



CONCHIGLIE 123/5026
Antique Gold on Ivy

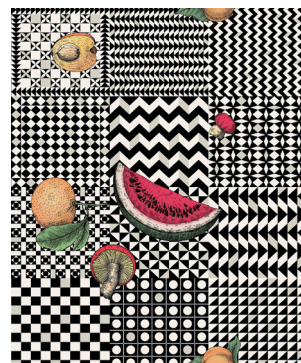
CONCHIGLIE

Fornasetti used shells to cover the walls of his Lake Como villa dining room, as a mid-century interpretation of a sixteenth-century grotto. The room also featured a delicate shell ceiling lamp made by Giulia, Piero's wife.

This motif can be seen across many of the atelier's pieces from headscarves and vases to trays, mirrors, and tables; Fornasetti inspiration knows no creative bounds.

Forming a geometric repeat of shell-laden boxes and diamonds, *Conchiglie* is full of exquisite detail, providing new inspiration every time the design is viewed.

FRUTTA E GEOMETRICO



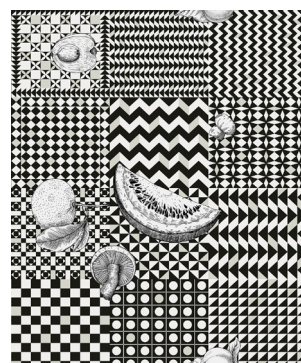
FRUTTA E GEOMETRICO 123/6027
Original



FRUTTA E GEOMETRICO 123/6028
Magenta & Ink



FRUTTA E GEOMETRICO 123/6029
Pastel



FRUTTA E GEOMETRICO 123/6030
Black & White



FRUTTA E GEOMETRICO 123/6031
Black, White & Gold

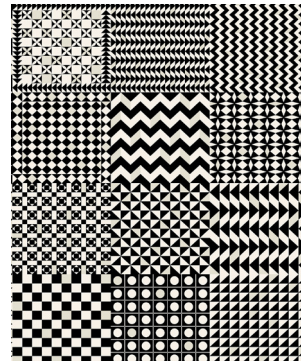
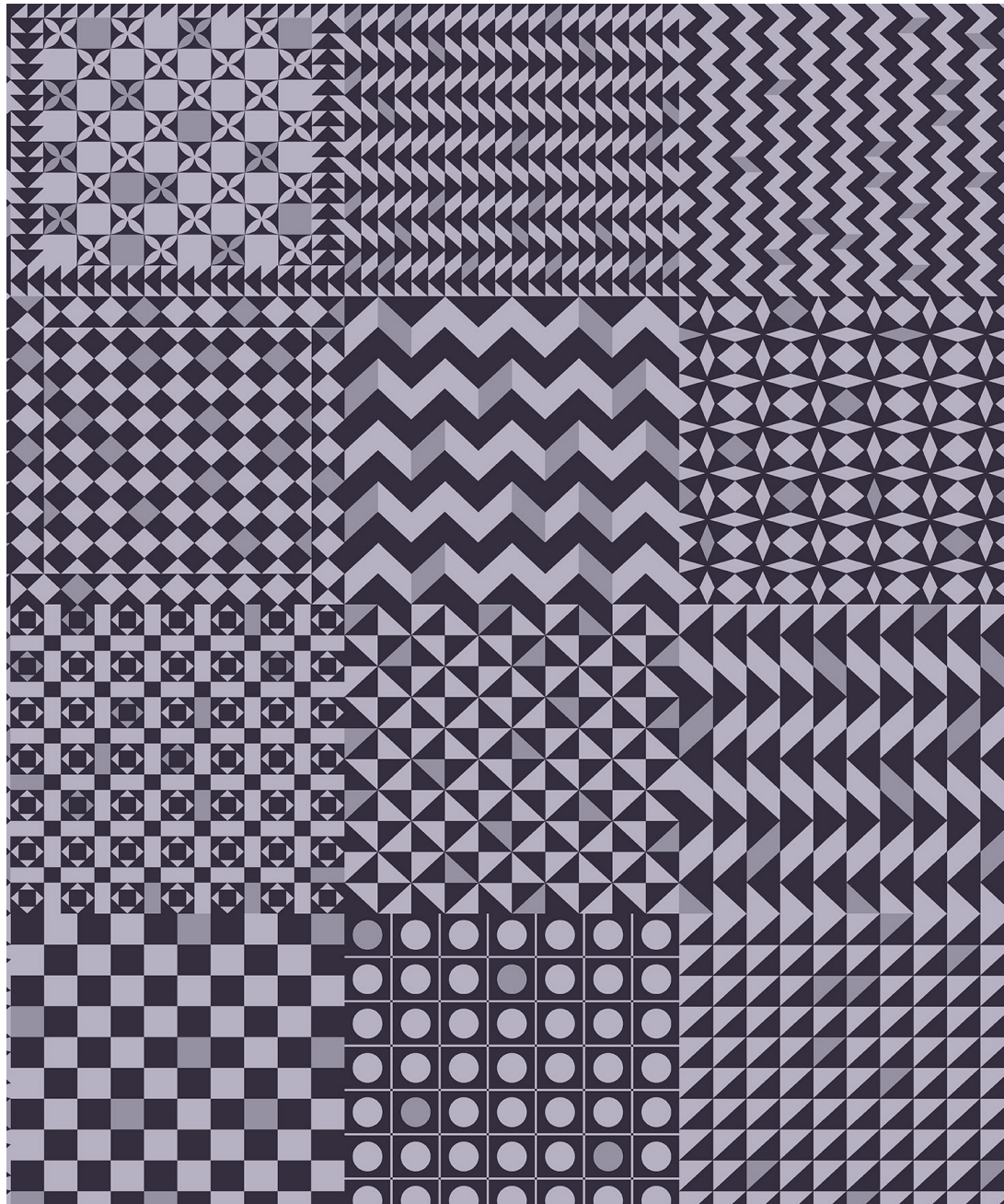
FRUTTA E GEOMETRICO

Every single image is a source of inspiration, a starting point that may lead to infinite variations. This is the very principle on which most of Piero Fornasetti's work relies. Fruit has prominently sat amongst his themes and designs since the 1940s and are present on many atelier items.

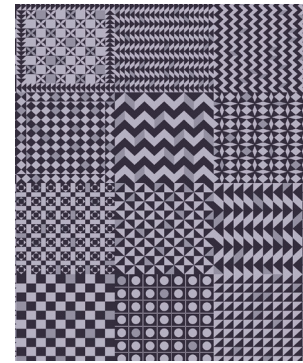
The clear-cut graphic lines infuse this arresting wallpaper with Fornasetti's unmistakable signature style and timeless allure. *The trompe l'oeil* effect enhances the contrast between the rigorous geometry of the base and the organic shapes of different fruits found in nature.

Each of *Frutto e Geometrico's* colourways provide a variation on this unique combination of structure and organic shape. Choose from chessboard black and white, to the softest mint pastels, or a dusk lilac grey.

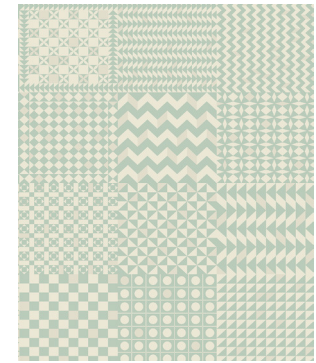
GEOMETRICO



GEOMETRICO 123/7032
Black & White



GEOMETRICO 123/7033
Magenta & Ink



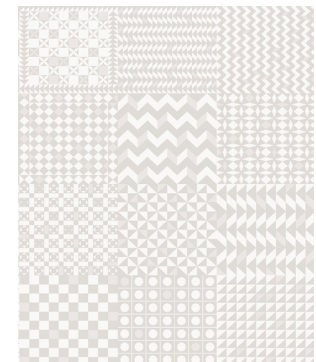
GEOMETRICO 123/7034
Pastel



GEOMETRICO 123/7035
Gold on Gold



GEOMETRICO 123/7036
Black & Gold



GEOMETRICO 123/7037
Mica

GEOMETRICO

Piero Fornasetti first used this motif in 1954 for the decoration of his 'Geometrico' screen. Variations on the chessboard theme and perceptual illusions play with the contrast between black and white. A foray into abstract, minimal, contemporary art, without sacrificing the eccentric Fornasetti spirit. Combine with *Frutto e Geometrico* for an extension of the design with added whimsy or use in isolation for a masterclass in bold geometry.

RAMO DI ORTENSIA



RAMO DI ORTENSIA 123/8038
Pastel on Charcoal



RAMO DI ORTENSIA 123/8039
Pastel on Stone



RAMO DI ORTENSIA 123/8040
Coral on Dark Blue



RAMO DI ORTENSIA 123/8041
Autumnal



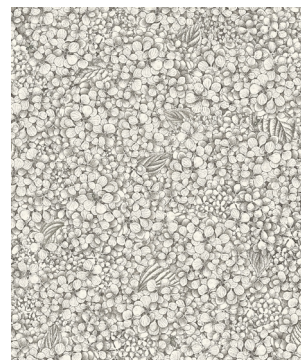
RAMO DI ORTENSIA 123/8042
Lime & Purple on Ink

RAMO DI ORTENSIA

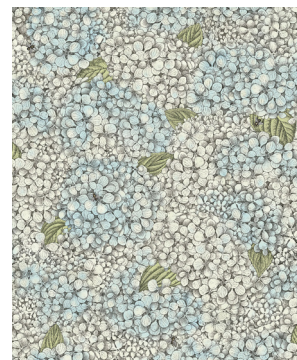
The 'Ortensie' design is based upon the abundant hydrangea bushes that grow in the garden that surrounds the Fornasetti house in Milan. Piero Fornasetti created this design in the 50s applying it to numerous tables and trays.

The idea to use hydrangea leaves came to Piero thanks to his son Barnaba. At 3 years old he brought one of the plant's leaves with a small daisy on it from the family garden as a gift for his father. The design captures the lush sprawling trails of this blousy plant and its redolent summer fragrance.

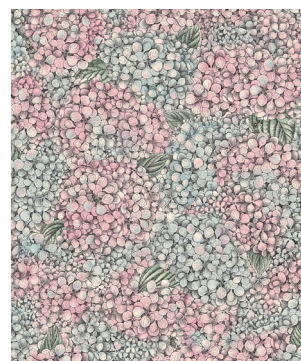
ORTENSIA



ORTENSIA 123/9043
Black & White



ORTENSIA 123/9044
Blue & Cream



ORTENSIA 123/9045
Pink & Blue

ORTENSIA

Stemming from the original 'Ortensie' design, Barnaba Fornasetti created a dense bouquet of petals with bees that at first covered a scarf and furniture of the Atelier. This bounteous floral print is full of life, drawing you into the garden and filling your thoughts with the sweet smells and sounds of summer. Soft pastels are reminiscent of organic *Ortensia* hues, whilst a simple monochrome accentuates the delicately detailed linework of this expansive design.

FOGLIE E SCIMMIE



FOGLIE E SCIMMIE 123/10046
Viridian



FOGLIE E SCIMMIE 123/10047
Olive & Orange



FOGLIE E SCIMMIE 123/10048
Blush with Blue Monkey



FOGLIE E SCIMMIE 123/10049
Forest Green



FOGLIE E SCIMMIE 123/10050
Autumnal Leaves

FOGLIE E SCIMMIE

Monkeys appear throughout the Milanese Atelier's work and, for the first time, are available emerging from the dense foliage of *Chiavi Segrete*. The playful composition of flora and fauna is quintessential Fornasetti, with the delicate organic study juxtaposed by the hiding primates. Available in subtle tones of old olive, as well as rich autumnal and verdant green palettes, *Foglie e scimmie* is natural progression of many of the Atelier's prolific themes.

FOGLIE E CIVETTE



FOGLIE E CIVETTE 123/I 1051
Viridian



FOGLIE E CIVETTE 123/I 1052
White



FOGLIE E CIVETTE 123/I 1053
Midnight



FOGLIE E CIVETTE 123/I 1054
Forest Green







FOGLIE E CIVETTE 123/I 1055
Autumnal Leaves

FOGLIE E CIVETTE

The owl, forever associated with darkness and gloom, can see and move deftly in the dark, hence its symbolism as the embodiment of wisdom and foresight. This ambivalent and mysterious symbol fascinated Piero Fornasetti, who used it as a motif on numerous accessories and porcelain items.

The animal kingdom has long populated Fornasetti's imagination and enriches this wallpaper with watchful owls nestled amongst a thick mantle of *Chiavi Segrete* leaves in tones of rich sapphire and citrine, as well as the softer stone and spring-like leaf greens.

PAGINATION SHEET

DESIGN NAME	PRODUCT CODE	COLOUR DESCRIPTION	WIDTH (CM)	WIDTH (INS)	ROLL LENGTH (M)	ROLL LENGTH (YDS)	REPEAT (CM)	REPEAT (INS)	ROLL (SQM)	ROLL (SQF)	MATCH	LIGHT FASTNESS & WASHABILITY	EAN CODE
SOLI	123/1001	BLACK & WHITE	52	20.5	10	11	52	20.5	5.2	56	THIRD DROP		5055496034065
	123/1002	CREAM & GOLD											5055496034072
	123/1003	SAGE & ROSE GOLD											5055496034089
	123/1004	MIDNIGHT & SOFT GOLD											5055496034096
	123/1005	EMERALD & GOLD											5055496034102
SOLI E NUVOLE	123/2006	YELLOW & BLUE	52	20.5	10	11	76	29.9	5.2	56	HALF DROP		5055496034119
	123/2007	BLACK & WHITE											5055496034126
	123/2008	GOLD & SILVER ON CHARCOAL											5055496034133
	123/2009	BEIGE & SOFT GOLD											5055496034140
	123/2010	TEAL & ROSE GOLD											5055496034157
	123/2011	GOLD ON GOLD											5055496034164
VISTA MEDITERRANEA	123/3012	CHARCOAL SKY	140	55.1	3.5	3.8	3.5	137.7	4.9	52.7	STRAIGHT MATCH		5055496034171
	123/3013	MIDNIGHT WITH SILVER SUN											5055496034188
	123/3014	BLUE OMBRE SKY											5055496034195
	123/3015	SOFT NEUTRAL											5055496034201
CAMMEI	123/4016	ANTIQUE GOLD ON OLIVE	52	20.5	10	11	76	29.9	5.2	56	STRAIGHT MATCH		5055496034218
	123/4017	SILVER ON INK											5055496034225
	123/4018	GOLD ON CHARCOAL											5055496034232
	123/4019	SOFT GOLD ON STONE											5055496034249
	123/4020	SLATE & ROSE GOLD											5055496034256
	123/4021	BLACK & WHITE											5055496034263

SOLI

SOLI E
NUVOLEVISTA
MEDITERRANEATECHNICAL
SPECIFICATION

CAMMEI

CONCHIGLIE

FRUTTA E
GEOMETRICO

GEOMETRICO





RAMO DI
ORTENSIA

ORTENSIA

FOGLIE E
SCIMMIEFOGLIE E
CIVITTEPAGINATION
SHEET

CONTACT US

PAGINATION SHEET

DESIGN NAME	PRODUCT CODE	COLOUR DESCRIPTION	WIDTH (CM)	WIDTH (INS)	ROLL LENGTH (M)	ROLL LENGTH (YDS)	REPEAT (CM)	REPEAT (INS)	ROLL (SQM)	ROLL (SQF)	MATCH	LIGHT FASTNESS & WASHABILITY	EAN CODE
CONCHIGLIE	123/5022	GILVER ON DENIM	68.5	27	10	11	68.5	27	6.85	73.7	STRAIGHT MATCH		5055496034270
	123/5023	SOFT GOLD ON CHARCOAL											5055496034287
	123/5024	PEARL ON PARCHMENT											5055496034294
	123/5025	GOLD ON STONE											5055496034300
	123/5026	ANTIQUÉ GOLD ON IVY											5055496034317
FRUTTA E GEOMETRICO	123/6027	ORIGINAL	52	20.5	10	11	64	25.2	5.2	56	HALF DROP		5055496034324
	123/6028	MAGENTA & INK											5055496034331
	123/6029	PASTEL											5055496034348
	123/6030	BLACK & WHITE											5055496034355
	123/6031	BLACK, WHITE & GOLD											5055496034362
GEOMETRICO	123/7032	BLACK & WHITE	52	20.5	10	11	64	25.2	5.2	56	HALF DROP		5055496034379
	123/7033	MAGENTA & INK											5055496034386
	123/7034	PASTEL											5055496034393
	123/7035	GOLD ON GOLD											5055496034409
	123/7036	BLACK & GOLD											5055496034416
	123/7037	MICA											5055496034423
RAMO DI ORTENSIA	123/8038	PASTEL ON CHARCOAL	52	20.5	10	11	64	25.2	5.2	56	HALF DROP		5055496034430
	123/8039	PASTEL ON STONE											5055496034447
	123/8040	CORAL ON DARK BLUE											5055496034454
	123/8041	AUTUMNAL											5055496034461
	123/8042	LIME & PURPLE ON INK											5055496034478

SOLI

SOLI E
NUVOLEVISTA
MEDITERRANEATECHNICAL
SPECIFICATION

CAMMEI

CONCHIGLIE

FRUTTA E
GEOMETRICO

GEOMETRICO




RAMO DI
ORTENSIA

ORTENSIA

FOGLIE E
SCIMMIEFOGLIE E
CIVITTEPAGINATION
SHEET

CONTACT US

PAGINATION SHEET

DESIGN NAME	PRODUCT CODE	COLOUR DESCRIPTION	WIDTH (CM)	WIDTH (INS)	ROLL LENGTH (M)	ROLL LENGTH (YDS)	REPEAT (CM)	REPEAT (INS)	ROLL (SQM)	ROLL (SQF)	MATCH	LIGHT FASTNESS & WASHABILITY	EAN CODE
ORTENSIA	I23/9043	BLACK & WHITE	52	20.5	10	11	64	25.2	5.2	56	HALF DROP		5055496034485
	I23/9044	BLUE & CREAM											5055496034492
	I23/9045	PINK & BLUE											5055496034508
FOGLIE E SCIMMIE	I23/10046	VIRIDIAN	68.5	27	10	11	57	22.4	6.85	73.7	STRAIGHT MATCH		5055496034515
	I23/10047	OLIVE & ORANGE											5055496034522
	I23/10048	BLUSH WITH BLUE MONKEY											5055496034539
	I23/10049	FOREST GREEN											5055496034546
	I23/10050	AUTUMNAL LEAVES											5055496034553
FOGLIE E CIVETTE	I23/I1051	VIRIDIAN	68.5	27	10	11	57	22.4	6.85	73.7	STRAIGHT MATCH		5055496034560
	I23/I1052	WHITE											5055496034577
	I23/I1053	MIDNIGHT											5055496034584
	I23/I1054	FOREST GREEN											5055496034591
	I23/I1055	AUTUMNAL LEAVES											5055496034607

SOLI

SOLI E
NUVOLEVISTA
MEDITERRANEATECHNICAL
SPECIFICATION

CAMMIE

CONCHIGLIE

FRUTTA E
GEOMETRICO

GEOMETRICO

RAMO DI
ORTENSIA

ORTENSIA

FOGLIE E
SCIMMIEFOGLIE E
CIVITTEPAGINATION
SHEET

CONTACT US

CONTACT US

FORNASETTI

Corso Venezia 21A - Milan, Italy

EMAIL: trade@fornasetti.com

Visit us at:

[W fornasetti.com](https://www.fornasetti.com)

[@fornasetti](https://www.instagram.com/fornasetti)



FORNASETTI
SENZA TEMPO II

SOLI

SOLI E
NUVOLE

VISTA
MEDITERRANEA

TECHNICAL
SPECIFICATION

CAMMEI

CONCHIGLIE

FRUTTA E
GEOMETRICO

GEOMETRICO

RAMO DI
ORTENSIA

ORTENSIA

FOGLIE E
SCIMMIE

FOGLIE E
CIVITTE

PAGINATION
SHEET

CONTACT US