

FORNASETTI

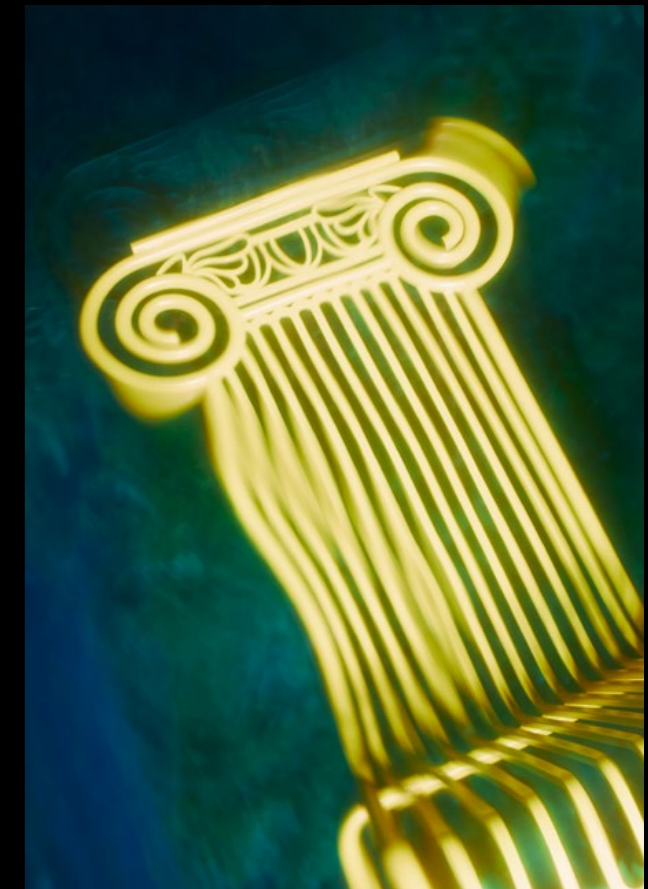
THE GARDEN OF
POSSIBLE NATURES

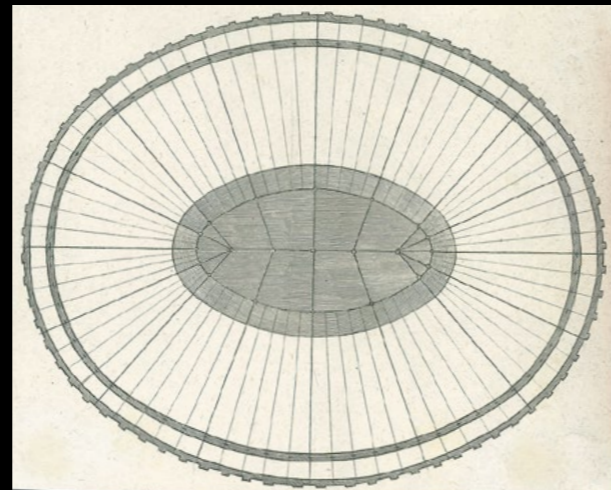
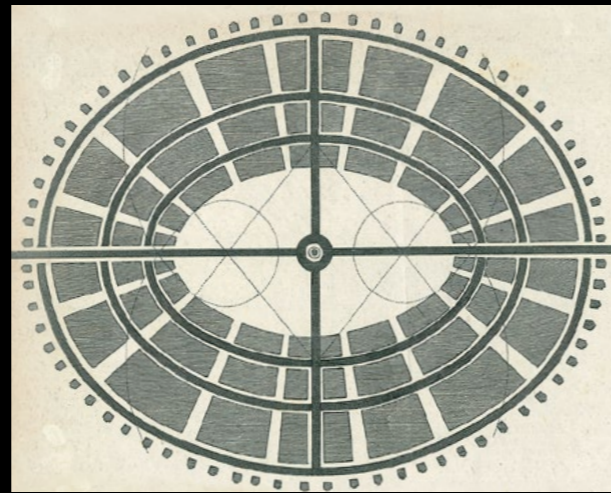
Outdoor Collection 2022



Snapshots of fragmented landscapes and reimagined relics tell the story of Fornasetti's Garden of Possible Natures. A landscape where day coexists with night, spontaneity with control, magic with order. The mise-en-scene of untamed nature, with its mysterious, primordial forms, and cultivated nature, with its reassuring rules and refinement.

Istantanee di paesaggi frammentati e di tracce reimmaginate raccontano il giardino delle nature possibili di Fornasetti. Un paesaggio in cui convivono giorno e notte, spontaneità e controllo, magia e ordine. La messa in scena di una natura indomita, con le sue forme originarie e misteriose, e di una natura addomesticata con le sue rassicuranti leggi e i suoi rigori.

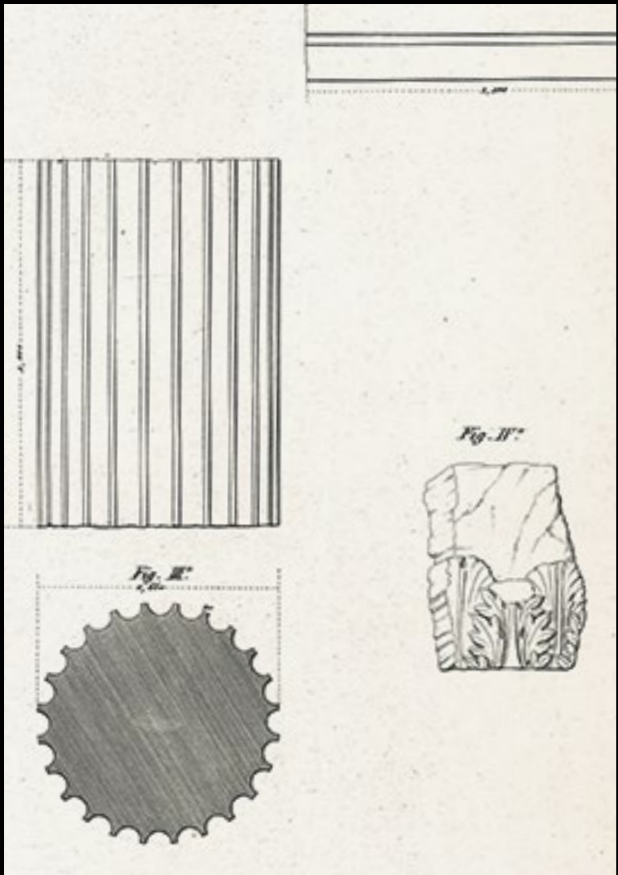


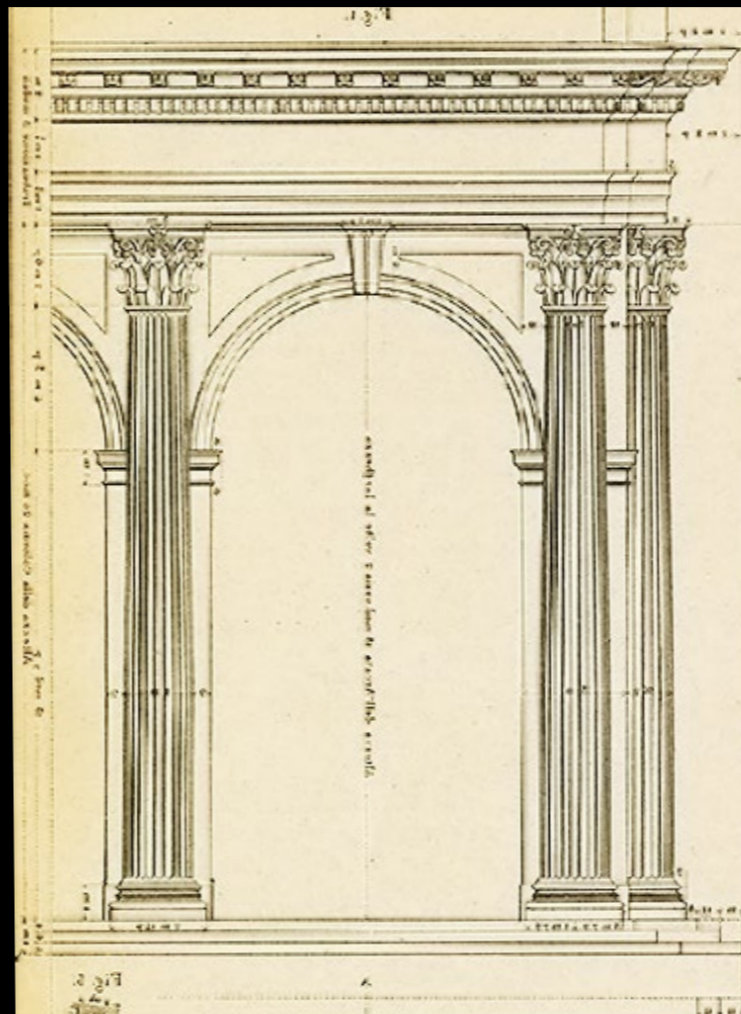
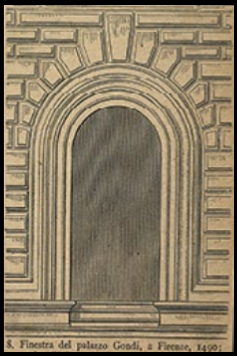












“The garden is one of the places where I like to cultivate and nurture not only plants and flowers, but also ideas and creativity. Its perfect interweaving of the spontaneity of wild greenery and the rigour of vegetation shaped by the hand of man reflects the image of our deepest selves. The garden is the place where spontaneity and control coexist.”

BARNABA FORNASETTI

“Il giardino è uno dei luoghi in cui mi piace coltivare e curare non solo piante e fiori, ma anche le idee e la creatività. Il suo intreccio perfetto fra la spontaneità del verde che cresce selvaggio e il rigore della vegetazione modellata dalla mano dell'uomo rispecchia l'immagine del nostro io più profondo. Il giardino è il luogo in cui convivono spontaneità e controllo.”

BARNABA FORNASETTI



CAPITELLUM
CHAIR/SEDIA

ARA SOLIS
TABLE/TAVOLO

For the first time, decoration becomes form, design, engraving and volume. The *Capitellum* chair and the *Ara Solis* table make up a set with a unique personality, mixing classical inspiration with a distinctly contemporary style, blending the simplicity of the sign with the historical importance of the relic. The chairs' design allows them to be stacked, and they can be completed with decorated cushions. The three colour variants range from classic shades of black and white to more vibrant yellow tones, applied through matt powder coating. Both items are made of coloured stainless steel, while the decoration on the table top is obtained by laser cutting.

Per la prima volta il decoro diventa forma, design, incisione e volume. La sedia *Capitellum* e il tavolo *Ara Solis* si compongono in un set dal carattere unico che mescola ispirazione classica e un tratto spiccatamente contemporaneo, l'essenzialità del segno e la storicità della traccia. Grazie al loro design, le sedie sono impilabili e le loro sedute completabili con cuscini decorati. Le tre varianti di colore spaziano dai toni più classici del bianco e del nero a quelli più vivaci del giallo, applicati mediante verniciatura a polvere opaca. Entrambi i pezzi sono realizzati in acciaio inox, il decoro sul top del tavolo è ricavato mediante taglio laser.







Chair/Sedia

Capitellum

The outdoor chair has a light, stainless steel structure and clean lines in the characteristic Fornasetti style that draw its shape and three-dimensionality. The *Capitellum* chair recalls classical ruins, reinterpreted by Fornasetti in a contemporary key. It is available in yellow, white and black matt paint.

La sedia da esterno ha una struttura leggera in acciaio inox e linee essenziali dove il tipico tratto grafico di Fornasetti ne disegna la forma e diventa tridimensionale. La sedia *Capitellum* richiama le rovine classiche rilette da Fornasetti in chiave contemporanea. È disponibile in giallo, bianco e nero tutti in verniciatura opaca.



Chair/Sedia
Capitellum

Technical Specifications

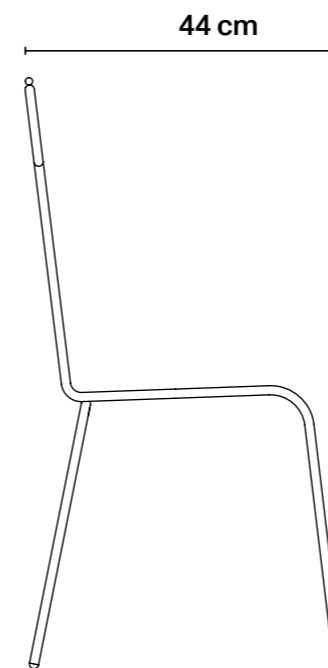
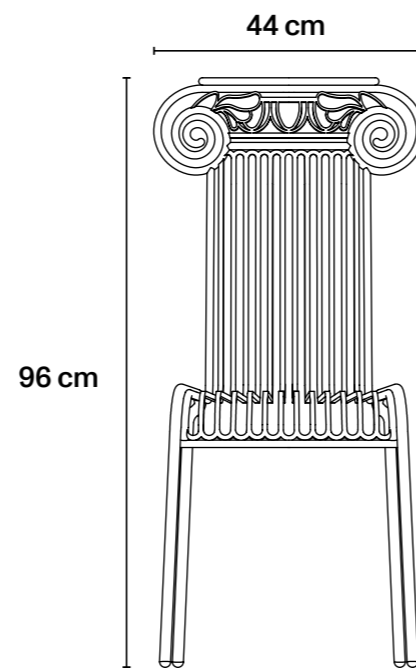
Stackable chair/
 Sedia impilabile.

Chair/Sedia:
 H 37.8 in W 17.3 in D 21 in
 H 96 cm L 44 cm P 44 cm

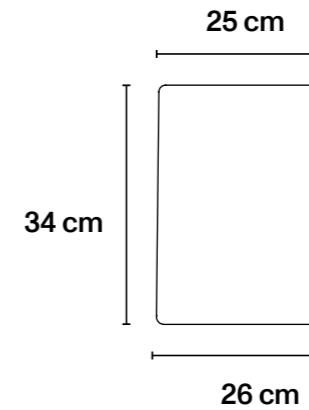
Weight/Peso: 7,9 kg

**Back cushion/
 Cuscino schienale:**
 H 1 in W 10.2 in/9.45 in D 13.78 in
 H 2,5 cm L 26 cm/25 cm P 34 cm

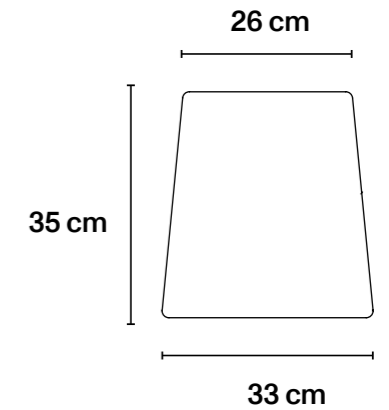
**Seat cushion/
 Cuscino seduta:**
 H 1 in W 12.6 in/10.2 in D 13.2 in
 H 2,5 cm L 33 cm/26 cm P 35 cm



Seat cushion/
 Cuscino seduta



Back cushion/
 Cuscino schienale



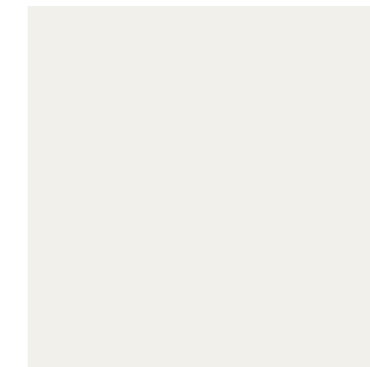
Frame Colours

Available in three matt powder-coated colours./
 Disponibile in tre colori, verniciatura a polvere opaca.

MATT YELLOW → RAL 1018



MATT WHITE → RAL 9016



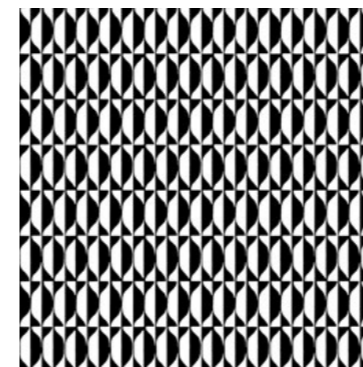
MATT BLACK → RAL 9005



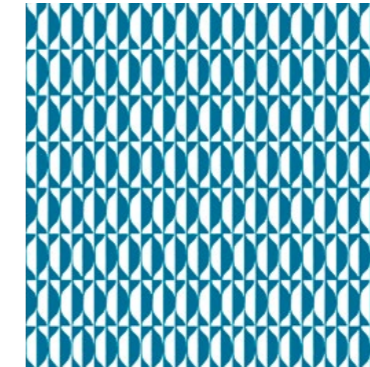
Textile Options for Cushions

**Composition/
 Composizione:**
 100% solution dyed outdoor acrylic fibre./100% fibra acrilica tinta in soluzione per esterno.
Finishing/Finitura:
 Mould resistant, soil resistant and oil and water repellent with Teflon® finishing./Resistente a muffa e sporco, oleo e idrorepellente con finitura Teflon®.

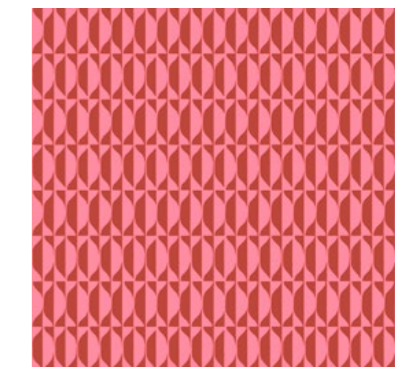
LOSANGHE
 black/white



LOSANGHE
 turquoise/white



LOSANGHE
 pink/brick

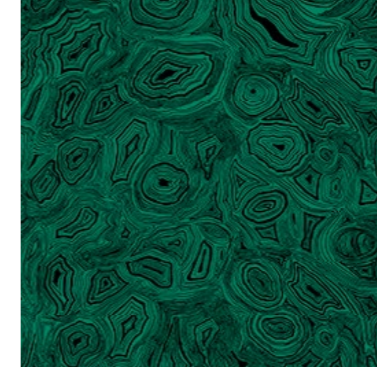


Chair/Sedia

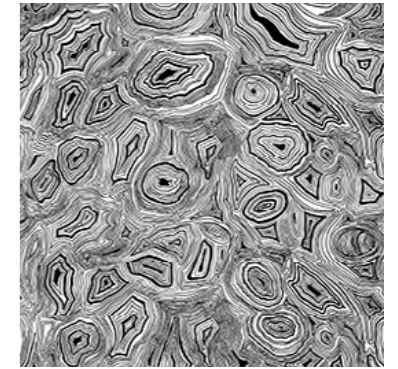
Capitellum

Textile Options
for Cushions

MALACHITE
green



MALACHITE
white/black



Tables/Tavoli
Ara Solis

The base of the table recalls the grooves of classical columns, while the unmistakable Fornasetti *Sole* stands out on the table top. The handmade laser-cut design is a new method adopted by the Fornasetti Atelier and is perfect for outdoor living. It is available in yellow, white and black all in matt paint, in two sizes.

La base del tavolo da esterno ricorda le scanalature delle colonne classiche, mentre sul piano tavolo spicca l'inconfondibile *Sole* di Fornasetti. Il decoro è ricavato mediante taglio laser manuale in una modalità inedita per l'Atelier Fornasetti, adatta alla proposta living per esterni. È disponibile in giallo, bianco e nero tutti in verniciatura opaca e in due misure.



Ara Solis

Technical Specifications

Top/Piano: Two sizes: Ø120 cm and Ø100 cm; turned stainless steel sheet with laser-cut decoration; top screwed to base./Due misure: Ø120 cm e Ø100 cm; lamiera tornita di acciaio Inox con decoro tagliato a laser; piano avvitato alla base.

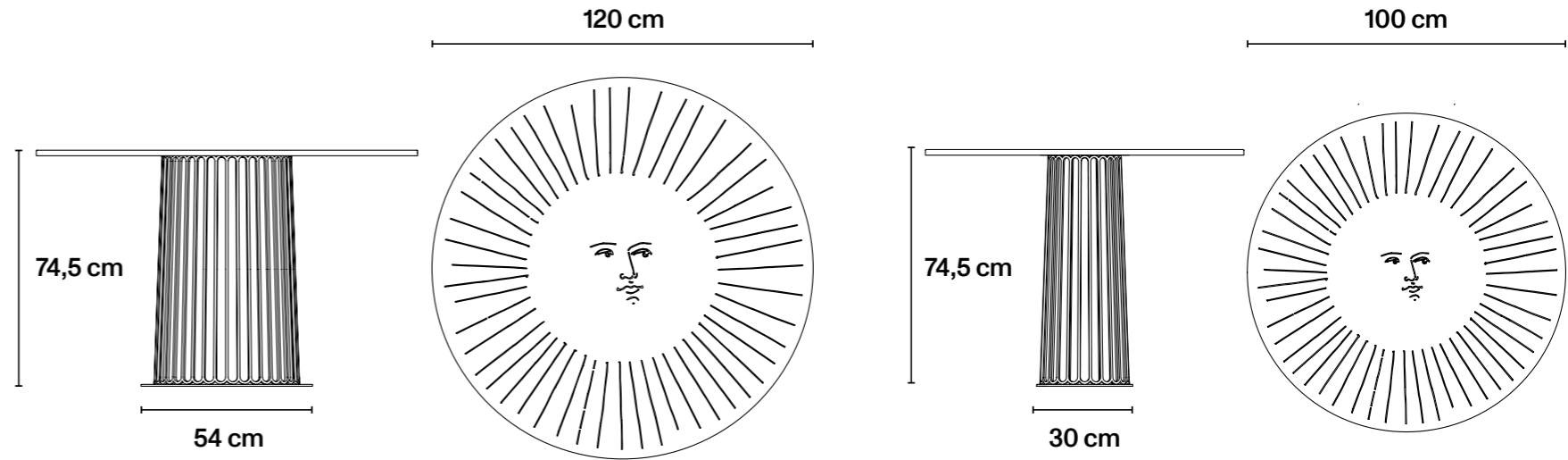
Base/Base: Two sizes: Ø120 cm and Ø100 cm; turned stainless steel sheet with laser-cut decoration; top screwed to base./Lamiera tornita di acciaio Inox tagliata a laser e rinforzata con tamponamenti.

Table/Tavolo 120:
 Ø 47.2 in/21.3 in H 29.3 in
 Ø 120 cm/ H 74,5 cm

Weight/Peso: 60,6 kg

Table/Tavolo 100:
 Ø 39.4 in/12 in H 29.3 in
 Ø 100 cm/30 cm H 74,5 cm

Weight/Peso: 42,6 kg



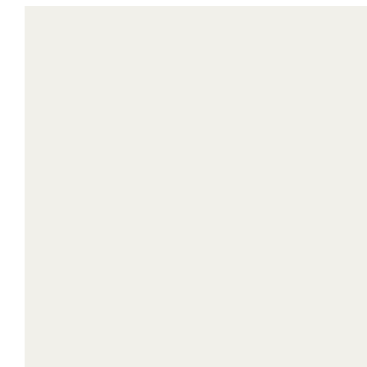
Frame Colours

Available in three matt powder-coated colours./Disponibile in tre colori, verniciatura a polvere opaca.

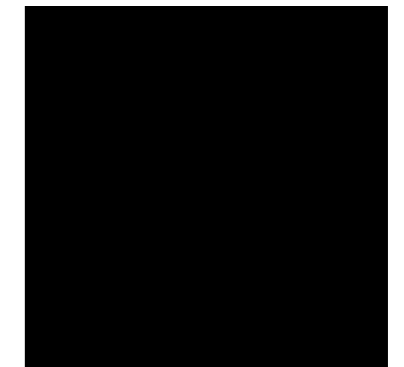
MATT YELLOW → RAL 1018



MATT WHITE → RAL 9016



MATT BLACK → RAL 9005



INSOLITI SALOTTI/ UNUSUAL OUTDOOR LOUNGES

Sofas/Divani	P.23
Armchairs/Poltrone	P.27
Benches/Panche	P.31
Cushions/Cuscini	P.35
Solitario	P.38
Round food trolley/ Carrello portavivande tondo/	P.40
Rectangular food trolley/ Carrello portavivande rettangolare	P.42

An open-air living proposal extends the *Insoliti Salotti* collection created for the 2020 indoor range. Sofas, armchairs and benches are made with coloured stainless steel frames and upholstered with outdoor fabrics printed with lozenges, lines and other geometric patterns. The upholstered items are available in a wide variety of colours and decorations on fabric, that can be put together in multiple sets and different creative configurations.

Una proposta di living en plain air arricchisce la collezione *Insoliti Salotti*, proposta indoor 2020. Sofà, poltrone e panche sono realizzate con strutture in acciaio inox e rivestite con tessuti da esterni decorati con motivi geometrici: losanghe, righe e altri pattern. Gli imbottiti sono disponibili in un'ampia varietà di colori e decori su tessuto, in un sistema componibile in molteplici set e diverse configurazioni creative.







Upholstered items/Imbottiti

Sofas

The sofa frame is made of stainless steel, available in different colours, and covered with outdoor fabrics printed with Fornasetti imagery, such as the geometric *Rigato*. The upholstered items are available in a wide variety of fabric designs to create multiple sets and unconventional outdoor corners.

La struttura del divano è in acciaio inox in diverse varianti colore ed è rivestita con tessuti da esterni stampati con motivi tratti dall'immaginario Fornasetti come il rigato dal gusto geometrico. Gli imbottiti sono disponibili in un'ampia varietà di decori su tessuto per comporre molteplici set e ricreare angoli non convenzionali all'aperto.



Upholstered items/Imbottiti

Sofas

Insoliti Salotti can be used as a basis for countless bespoke creative configurations. Each frame colour can be combined with a different fabric, characterised by its own colour and decorative variations.

Gli *Insoliti Salotti* possono dar vita, su misura, a innumerevoli configurazioni creative. Ogni cromia della struttura può associarsi a un diverso tessuto, caratterizzato da una propria declinazione decorativa e cromatica.



Sofas

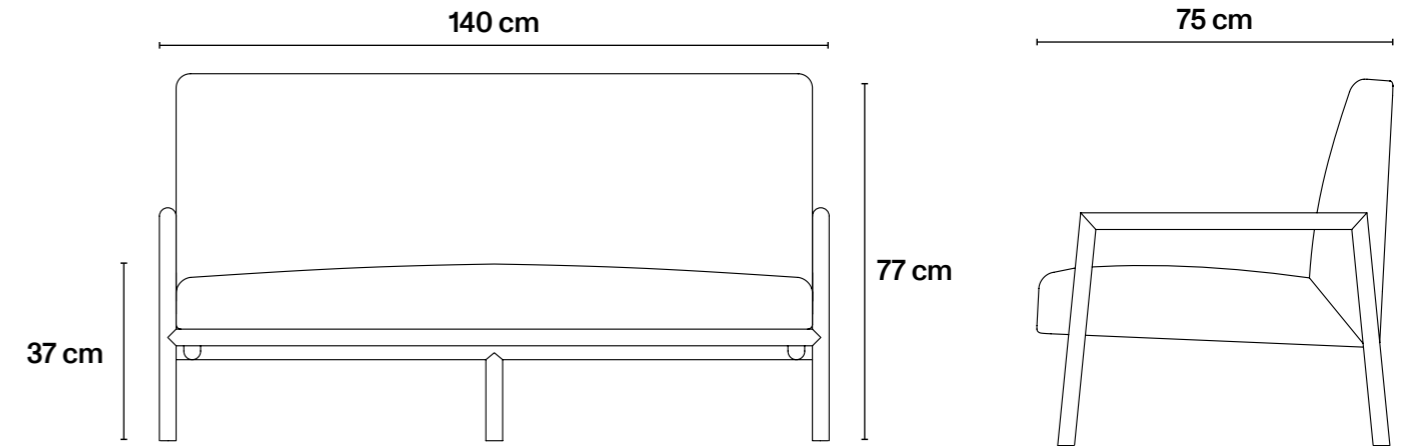
RRP:2.200€

Technical Specifications

Tubular stainless steel frame; upholstered in quick-draining polyurethane for outdoor use./
Struttura tubolare in acciaio Inox; imbottito in poliuretano drenante per outdoor.

H 30 in W 55 in D 29.5 in
H 77 cm L 140 cm P 75 cm

Weight/Peso: 35 kg



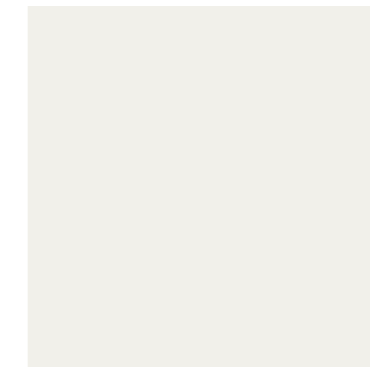
Frame Colours

Available in three matt powder-coated colours./
Disponibile in tre colori, verniciatura a polvere opaca.

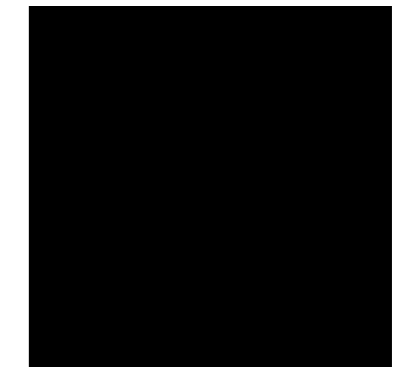
MATT YELLOW → RAL 1018



MATT WHITE → RAL 9016



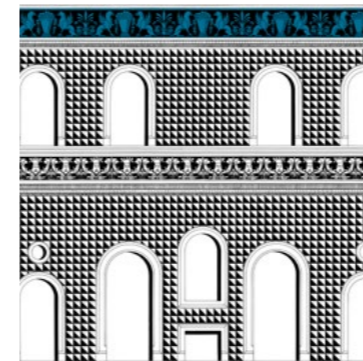
MATT BLACK → RAL 9005



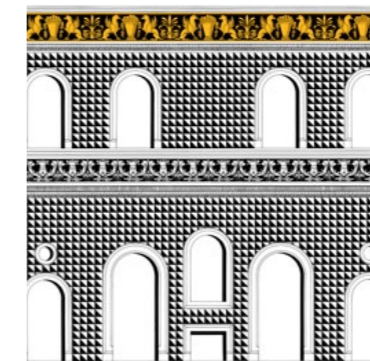
Textile Options

Composition/Composizione:
100% solution-dyed outdoor acrylic fibre./100% fibra acrilica tinta in soluzione per esterno.
Finishing/Finitura:
Mould resistant, soil resistant and oil and water repellent with Teflon® finishing./Resistente a muffa e sporco, oleo e idrorepellente con finitura Teflon®.

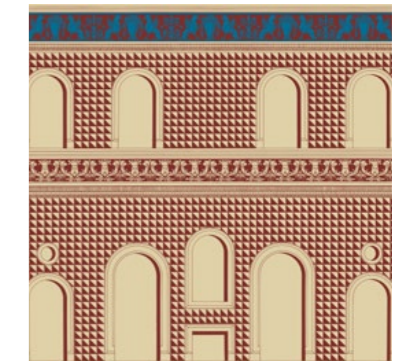
FACCIATA QUATTROCENTESCA
white/black/turquoise



FACCIATA QUATTROCENTESCA
white/black/yellow



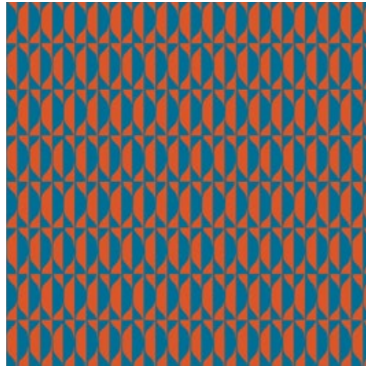
FACCIATA QUATTROCENTESCA
rust/ecru/turquoise



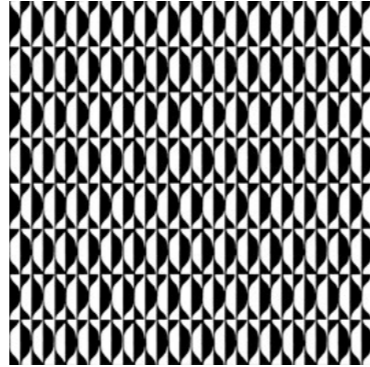
Sofas

Textile Options

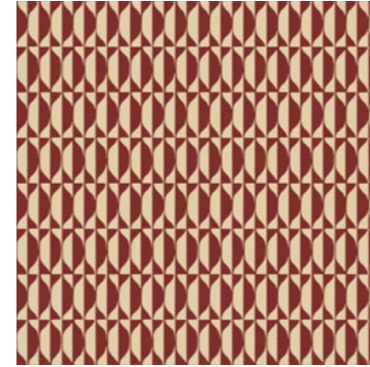
LOSANGHE
turquoise/orange



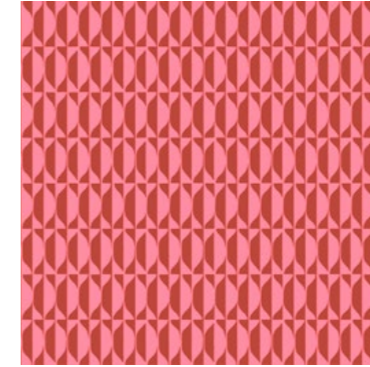
LOSANGHE
black/white



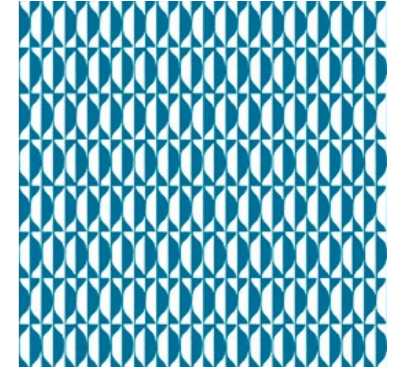
LOSANGHE
rust/ecru



LOSANGHE
pink/rust



LOSANGHE
turquoise/white



RIGATO
yellow/white/black



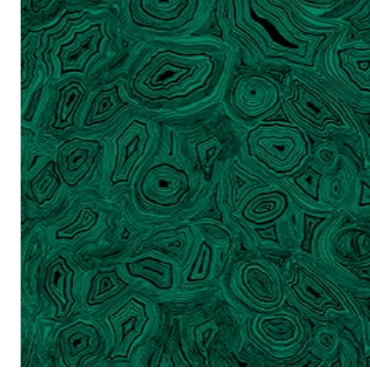
RIGATO
turquoise/white/black



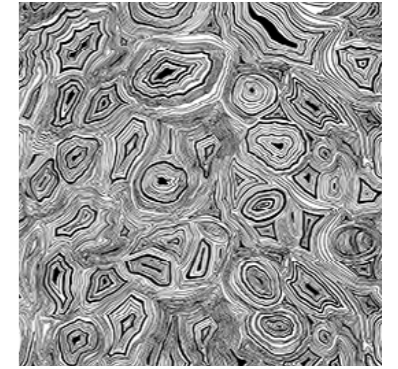
RIGATO
green/white/black



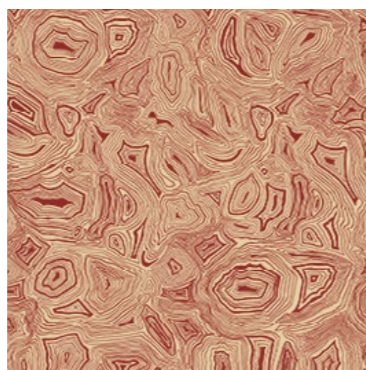
MALACHITE
green



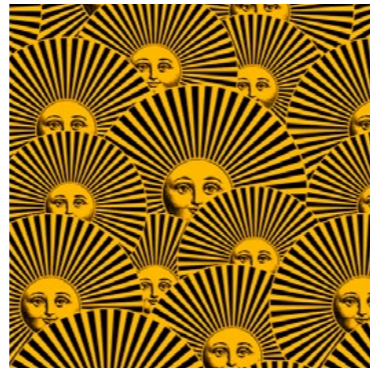
MALACHITE
white/black



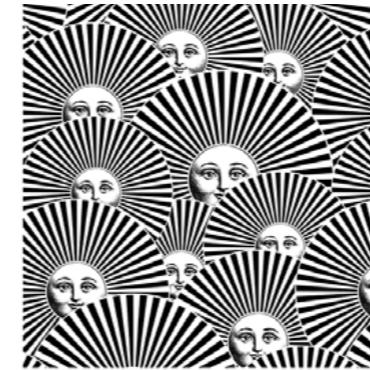
MALACHITE
rust/ecru



SOLE A VENTAGLIO
black/yellow



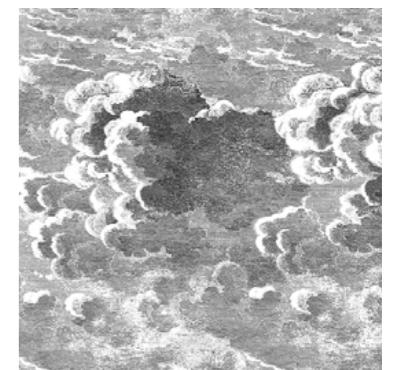
SOLE A VENTAGLIO
black/white



SOLE A VENTAGLIO
rust/ecru



NUVOLETTE



Upholstered items/Imbottiti

Armchairs

The armchair structure is made of stainless steel, available in different colours, and covered with outdoor fabrics printed with Fornasetti imagery, such as the *Facciata Quattrocentesca* motif. The upholstered items are available in a wide variety of fabric designs to create multiple sets and unconventional outdoor corners.

La struttura della poltrona è in acciaio inox in diverse varianti colore ed è rivestita con tessuti da esterni stampati con motivi tratti dall'immaginario Fornasetti come l'architettura *Facciata Quattrocentesca*. Gli imbottiti sono disponibili in un'ampia varietà di decori su tessuto per comporre molteplici set e ricreare angoli non convenzionali all'aperto.



Upholstered items/Imbottiti
Armchairs

Insoliti Salotti can be used as a basis for countless bespoke creative configurations. Each frame colour can be combined with a different fabric, characterised by its own colour and decorative variations.

Gli *Insoliti Salotti* possono dar vita, su misura, a innumerevoli configurazioni creative. Ogni cromia della struttura può associarsi a un diverso tessuto, caratterizzato da una propria declinazione decorativa e cromatica.



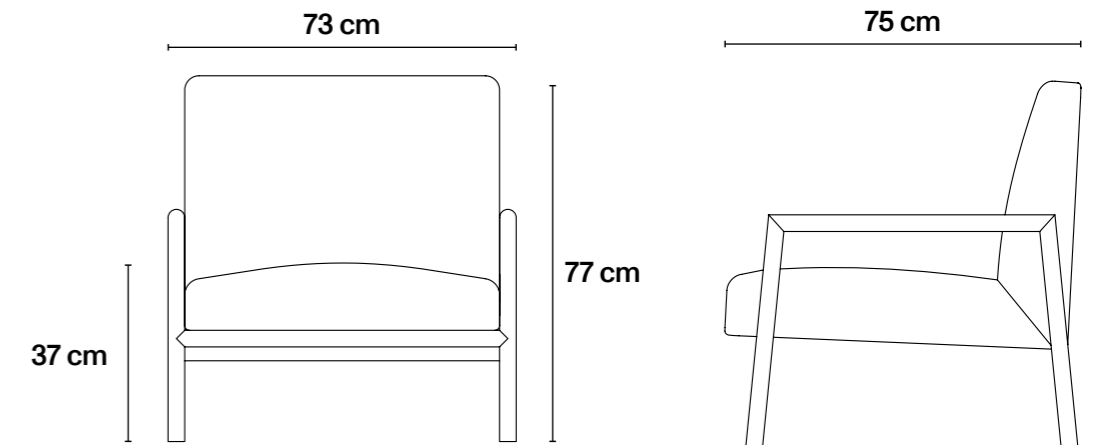
Armchairs

Technical Specifications

Tubular stainless steel frame; upholstered in quick-draining polyurethane for outdoor use./
Struttura tubolare in acciaio Inox; imbottito in poliuretano drenante per outdoor.

H 30 in W 28.7 in D 29.5 in
H 77 cm L 73 cm P 75 cm

Weight/Peso: 23,5 kg



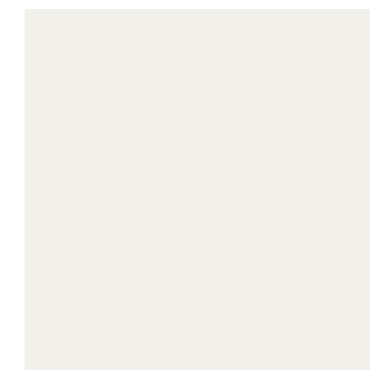
Frame Colours

Available in three matt powder-coated colours./
Disponibile in tre colori, verniciatura a polvere opaca.

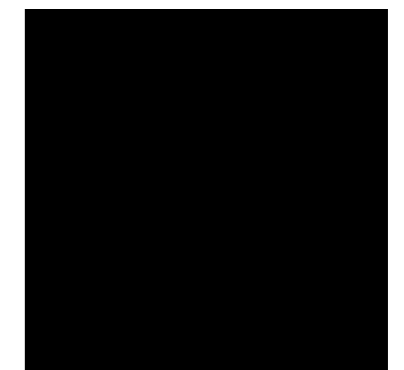
MATT YELLOW → RAL 1018



MATT WHITE → RAL 9016



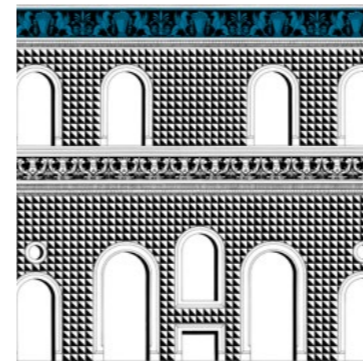
MATT BLACK → RAL 9005



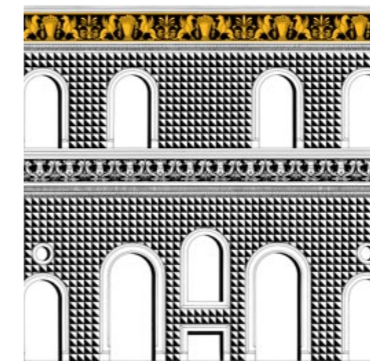
Textile Options

Composition/Composizione:
100% solution-dyed outdoor acrylic fibre./100% fibra acrilica tinta in soluzione per esterno.
Finishing/Finitura:
Mould resistant, soil resistant and oil and water repellent with Teflon® finishing./Resistente a muffa e sporco, oleo e idrorepellente con finitura Teflon®.

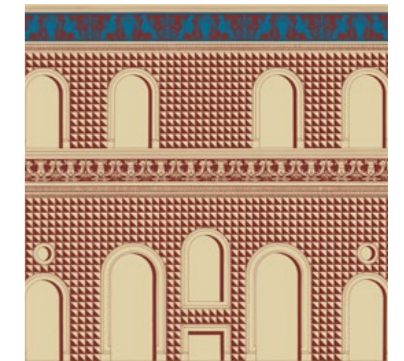
FACCIATA QUATTROCENTESCA
white/black/turquoise



FACCIATA QUATTROCENTESCA
white/black/yellow



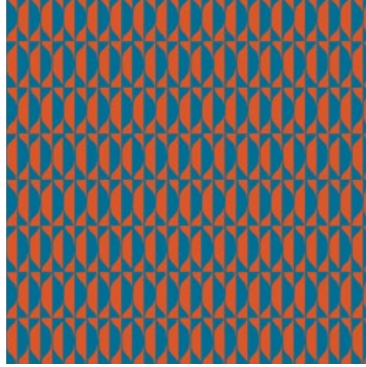
FACCIATA QUATTROCENTESCA
rust/ecru/turquoise



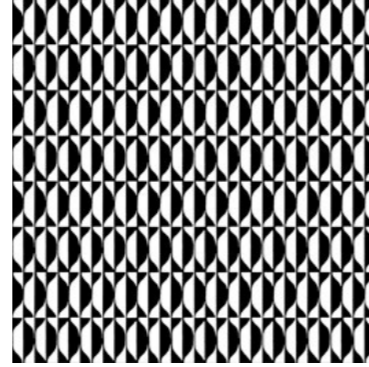
Armchairs

Textile Options

LOSANGHE
turquoise/orange



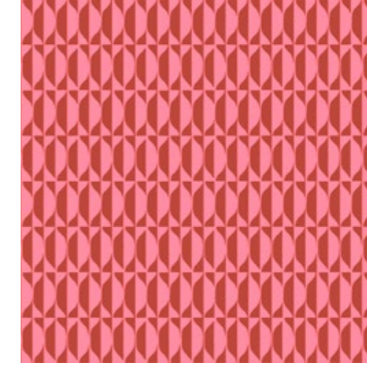
LOSANGHE
black/white



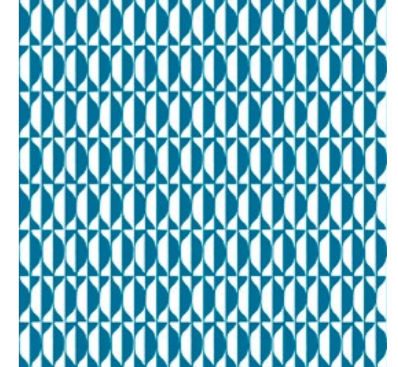
LOSANGHE
rust/ecru



LOSANGHE
pink/rust



LOSANGHE
turquoise/white



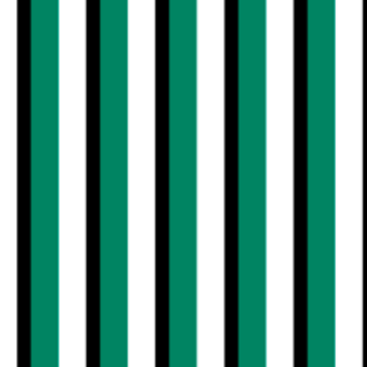
RIGATO
yellow/white/black



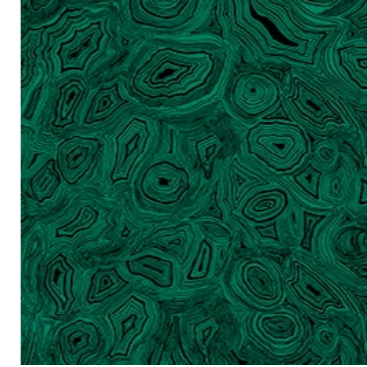
RIGATO
turquoise/white/black



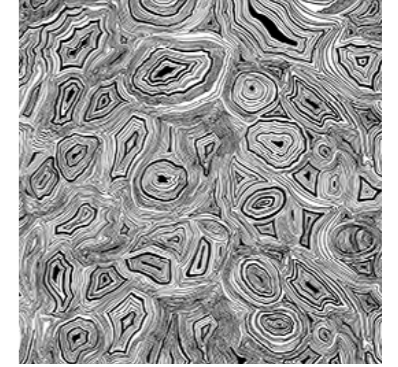
RIGATO
green/white/black



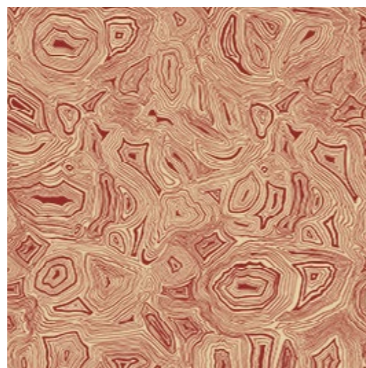
MALACHITE
green



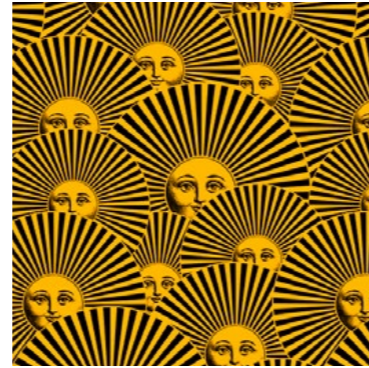
MALACHITE
white/black



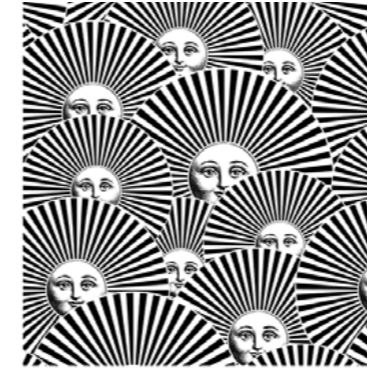
MALACHITE
rust/ecru



SOLE A VENTAGLIO
black/yellow



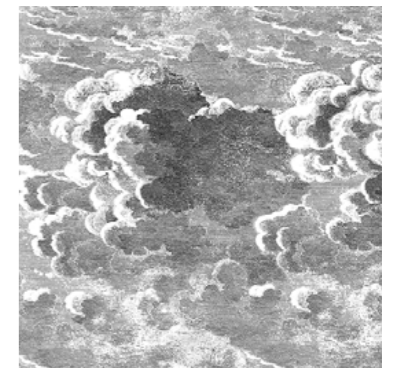
SOLE A VENTAGLIO
black/white



SOLE A VENTAGLIO
rust/ecru



NUVOLETTE



Upholstered items/Imbottiti

Benches

The bench frame is made of stainless steel, available in different colours, and covered with outdoor fabrics printed with Fornasetti imagery, such as the geometric *Losanghe* shapes. The upholstered items are available in a wide variety of fabric designs to create multiple sets and unconventional outdoor corners.

La struttura della panca è in acciaio inox in diverse varianti colore ed è rivestita con tessuti da esterni stampati con motivi tratti dall'immaginario Fornasetti come le geometriche *Losanghe*. Gli imbottiti sono disponibili in un'ampia varietà di decori su tessuto per comporre molteplici set e ricreare angoli non convenzionali all'aperto.



Upholstered items/Imbottiti

Benches

Insoliti Salotti can be used as a basis for countless bespoke creative configurations. Each frame colour can be combined with a different fabric, characterised by its own colour and decorative variations.

Gli *Insoliti Salotti* possono dar vita, su misura, a innumerevoli configurazioni creative. Ogni cromia della struttura può associarsi a un diverso tessuto, caratterizzato da una propria declinazione decorativa e cromatica.



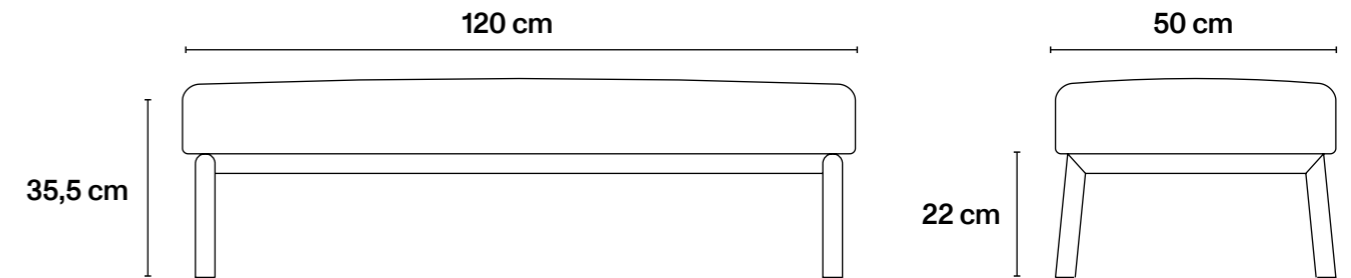
Benches

Technical Specifications

Tubular stainless steel frame; upholstered in quick-draining polyurethane for outdoor use./
Struttura tubolare in acciaio Inox; imbottito in poliuretano drenante per outdoor.

H 14 in W 47.2 in D 19.7 in
H 35.5 cm L 120 cm P 50 cm

Weight/Peso: 15,5 kg



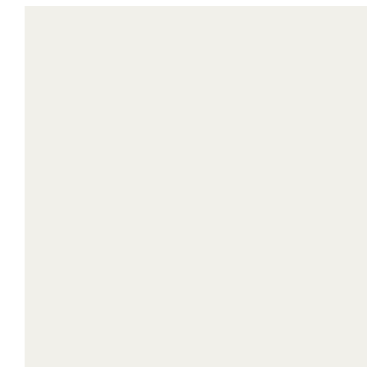
Frame Colours

Available in three matt powder-coated colours./
Disponibile in tre colori, verniciatura a polvere opaca.

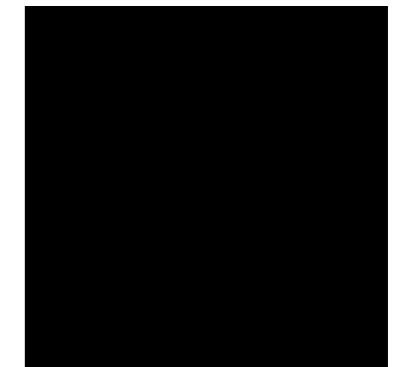
MATT YELLOW → RAL 1018



MATT WHITE → RAL 9016



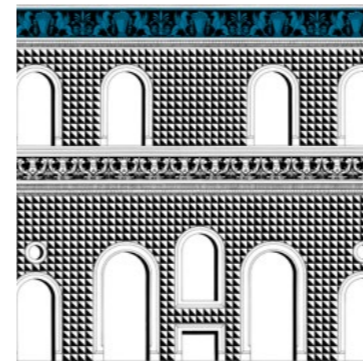
MATT BLACK → RAL 9005



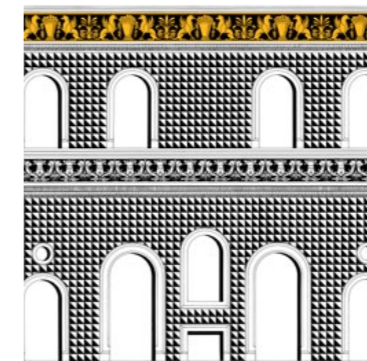
Textile Options

Composition/Composizione:
100% solution-dyed outdoor acrylic fibre./100% fibra acrilica tinta in soluzione per esterno.
Finishing/Finitura:
Mould resistant, soil resistant and oil and water repellent with Teflon® finishing./Resistente a muffa e sporco, oleo e idrorepellente con finitura Teflon®.

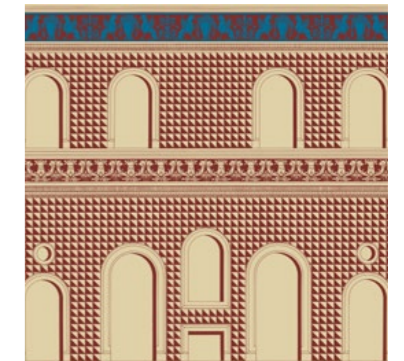
FACCIATA QUATTROCENTESCA
white/black/turquoise



FACCIATA QUATTROCENTESCA
white/black/yellow



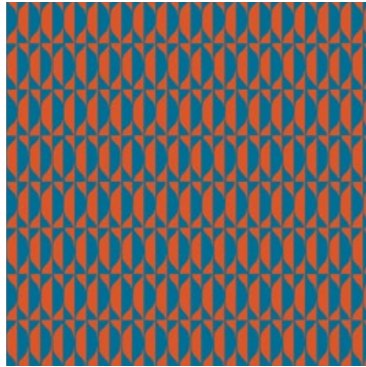
FACCIATA QUATTROCENTESCA
rust/ecru/turquoise



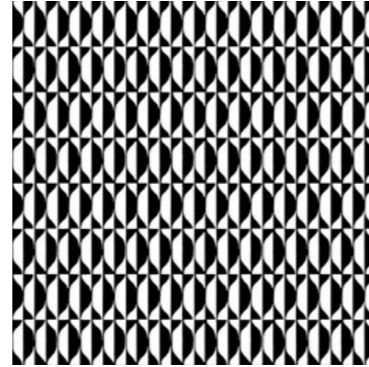
Benches

Textile Options

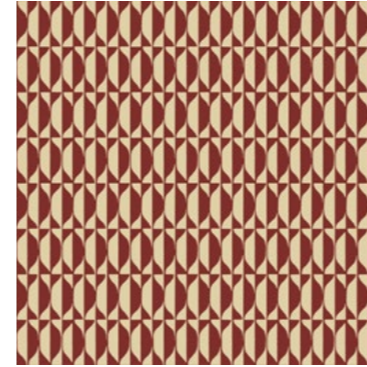
LOSANGHE
turquoise/orange



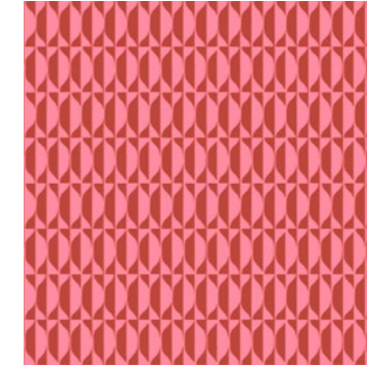
LOSANGHE
black/white



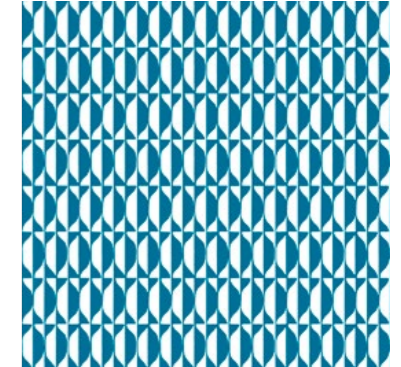
LOSANGHE
rust/ecru



LOSANGHE
pink/rust



LOSANGHE
turquoise/white



RIGATO
yellow/white/black



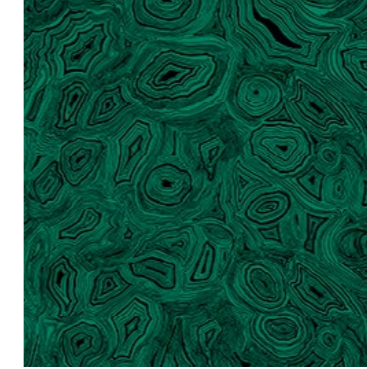
RIGATO
turquoise/white/black



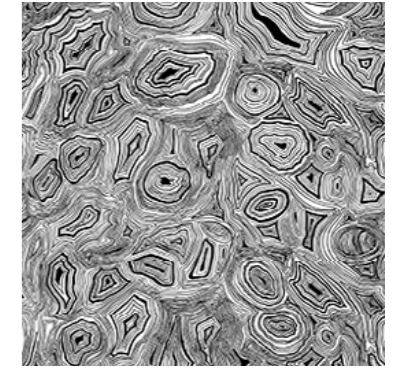
RIGATO
green/white/black



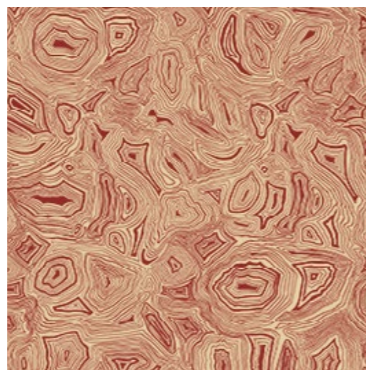
MALACHITE
green



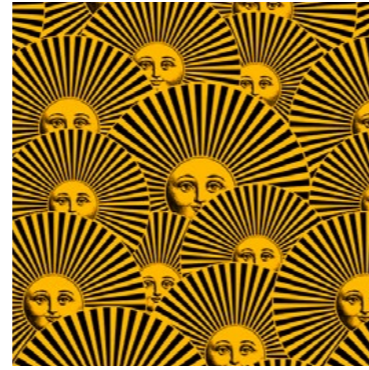
MALACHITE
white/black



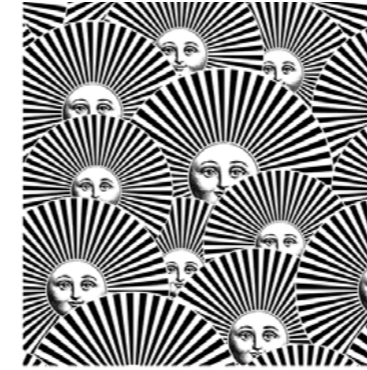
MALACHITE
rust/ecru



SOLE A VENTAGLIO
black/yellow



SOLE A VENTAGLIO
black/white



SOLE A VENTAGLIO
rust/ecru



NUVOLETTE



Cushions



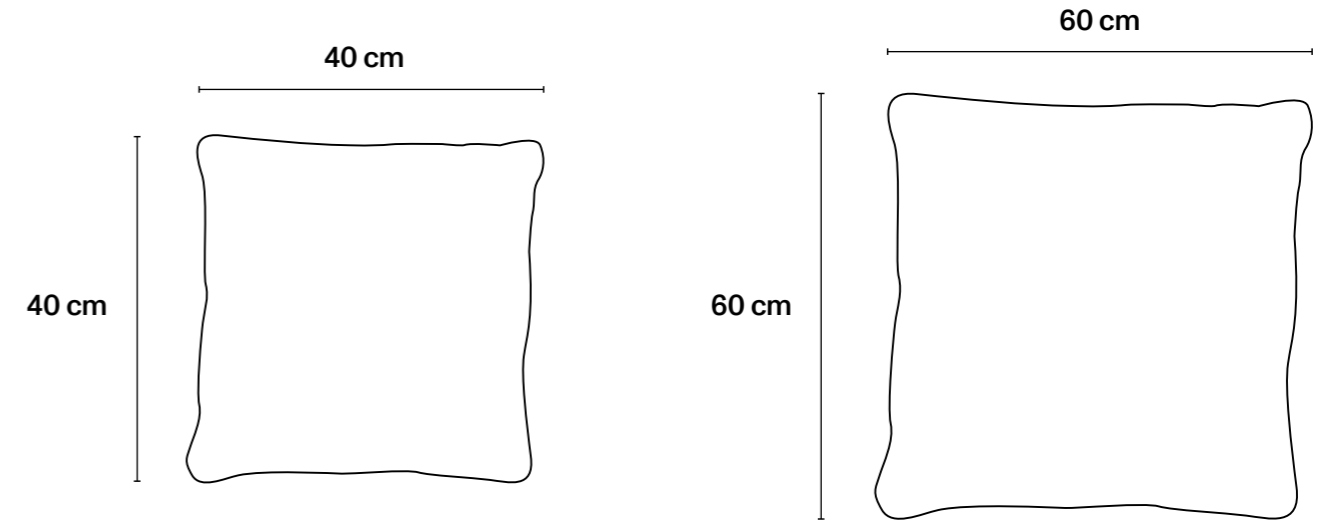
Cushions

Technical Specifications

Cushion in two different sizes, 40 and 60 cm; with polyurethane padding for outdoor use./
Cuscino in due diverse dimensioni, 40 e 60 cm; imbottito in poliuretano drenante per outdoor.

**Small cushion/
Cuscino piccolo:**
H 15,75 in W 15.75 in
H 4. cm L 40 cm

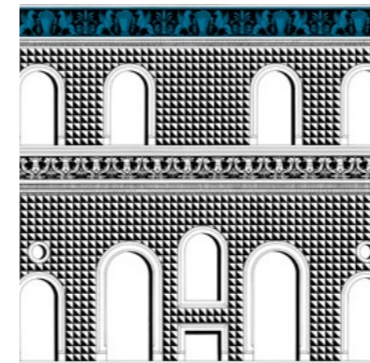
**Medium cushion/
Cuscino medio:**
H 23.62 in W 23.62 in
H 60 cm L 60 cm



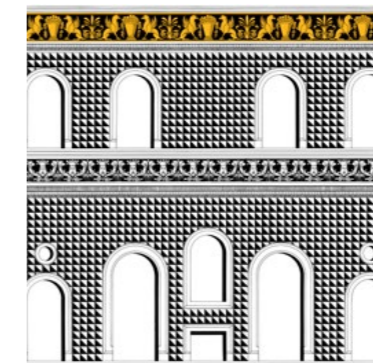
Textile Options

**Composition/
Composizione:**
100% solution-dyed outdoor acrylic fibre./100% fibra acrilica tinta in soluzione per esterno.
Finishing/Finitura:
Mould resistant, soil resistant and oil and water repellent with Teflon® finishing./Resistente a muffa e sporco, oleo e idrorepellente con finitura Teflon®.

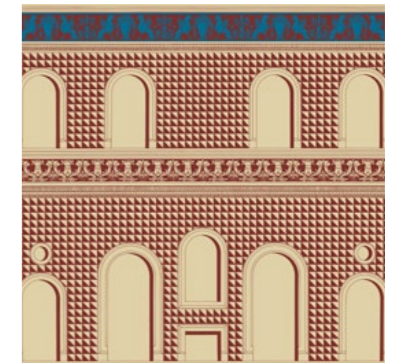
FACCIATA QUATTROCENTESCA
white/black/turquoise



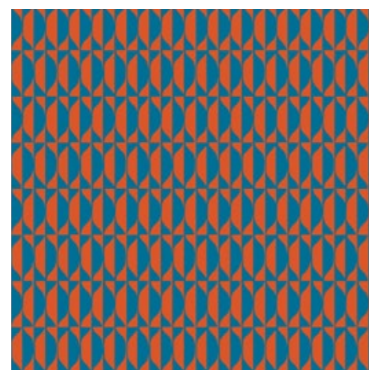
FACCIATA QUATTROCENTESCA
white/black/yellow



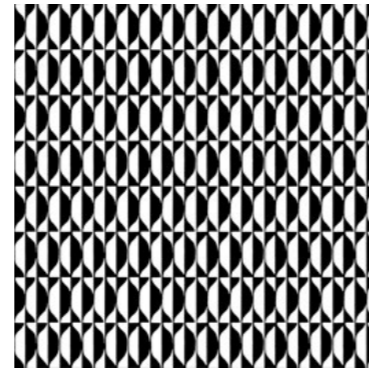
FACCIATA QUATTROCENTESCA
rust/ecru/turquoise



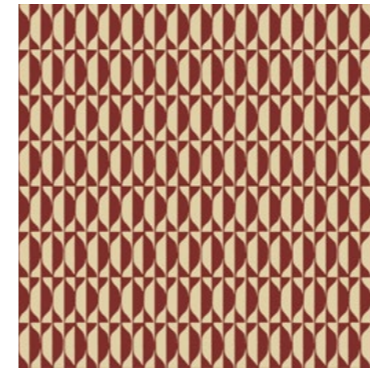
LOSANGHE
turquoise/orange



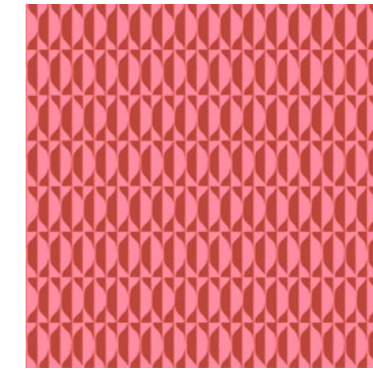
LOSANGHE
black/white



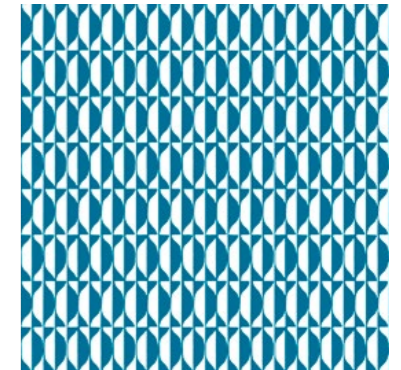
LOSANGHE
rust/ecru



LOSANGHE
pink/rust



LOSANGHE
turquoise/white



Cushions

Textile Options

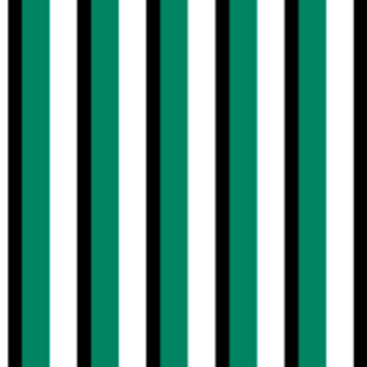
RIGATO
yellow/white/black



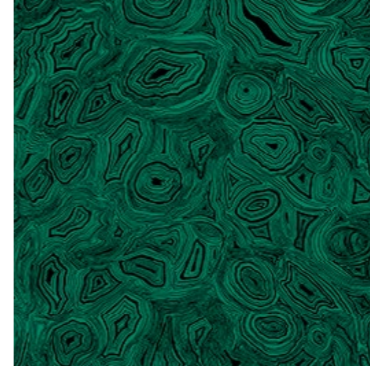
RIGATO
turquoise/white/black



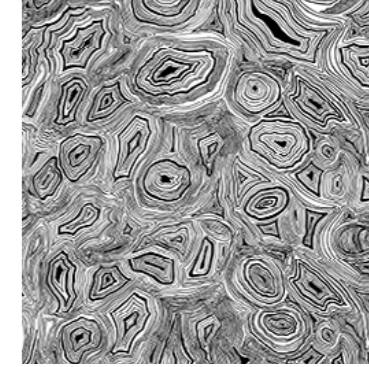
RIGATO
green/white/black



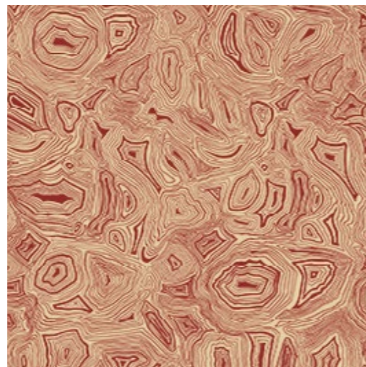
MALACHITE
green



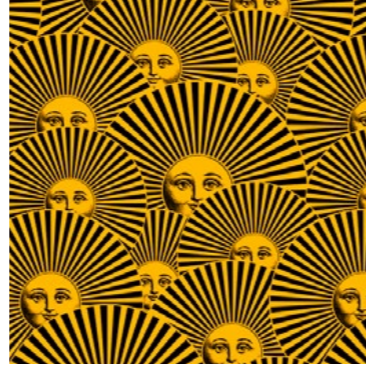
MALACHITE
white/black



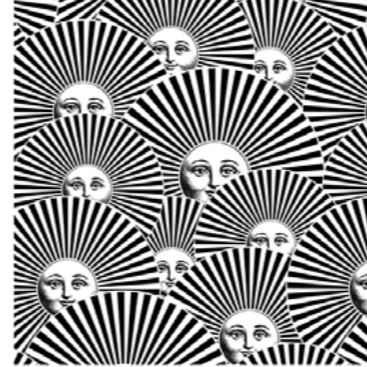
MALACHITE
rust/ecru



SOLE A VENTAGLIO
black/yellow



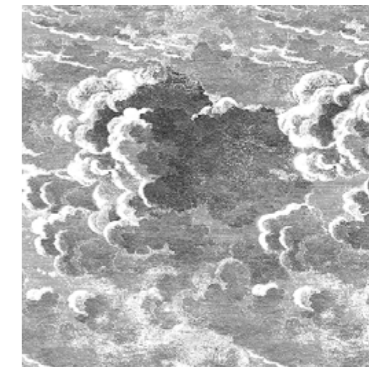
SOLE A VENTAGLIO
black/white



SOLE A VENTAGLIO
rust/ecru



NUVOLETTE



Table/Tavolo

Solitario

The unmistakable Fornasetti *Sole* stands out on the table top. The laser-cut design is a new method adopted by the Fornasetti Atelier and is perfect for outdoor living. The table is available in yellow, white and black matt paint.

Sul piano tavolo spicca l'inconfondibile sole di Fornasetti. Il decoro è ricavato mediante taglio laser manuale in una modalità inedita per l'Atelier Fornasetti, adatta alla proposta living per esterni. Il tavolo per esterno è disponibile in giallo, bianco e nero tutti in verniciatura opaca.



Table/Tavolo

Solitario

Technical Specifications

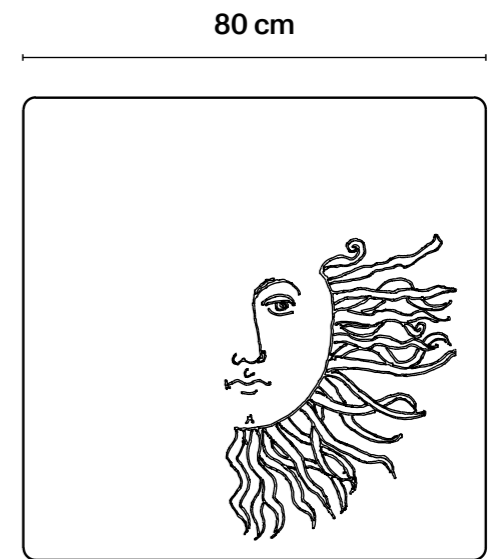
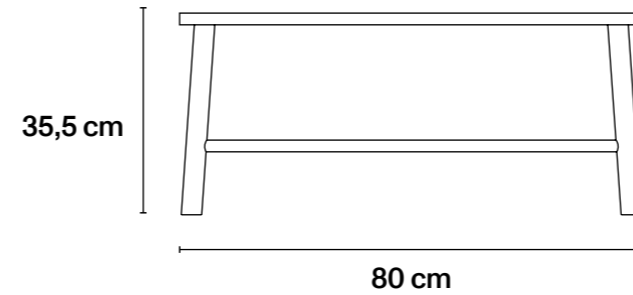
Top/Piano: Turned stainless steel sheet with laser-cut decoration; top screwed to base./

Lamiera tornita di acciaio Inox con decoro tagliato a laser; piano avvitato alla base.

Legs/Gambe: Tubular stainless steel./Tubolare di acciaio Inox.

H 13.78 in W 31.5 in D 31.5 in
H 35 cm L 80 cm P 80 cm

Weight/Peso: 14,2 kg



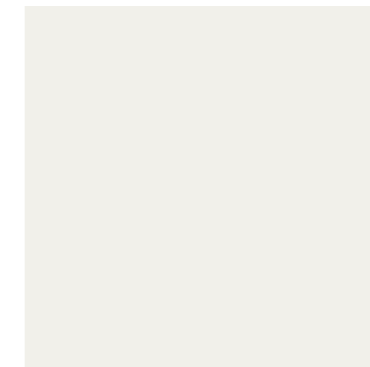
Frame Colours

Available in three matt powder-coated colours./
Disponibile in tre colori, verniciatura a polvere opaca.

MATT YELLOW → RAL 1018



MATT WHITE → RAL 9016



MATT BLACK → RAL 9005



Food Trolleys/Carrelli portavivande

Round trolley

Practical and easy to handle, the trolley is suitable for both indoor and outdoor use thanks to its stainless steel structure. Specifically designed to accommodate round Fornasetti trays, this accessory takes on a new look with each design and colour combination. It is available in yellow, white and black matt paint.

Pratico e maneggevole, il portavivande è adatto a un utilizzo sia per l'esterno che per l'interno grazie alla struttura in acciaio inox. Disegnato appositamente per accogliere i vassoi tondi Fornasetti, questo accessorio assume ogni volta una veste nuova in base all'accostamento di decoro e colore. È disponibile in giallo, bianco e nero, tutti in verniciatura opaca.



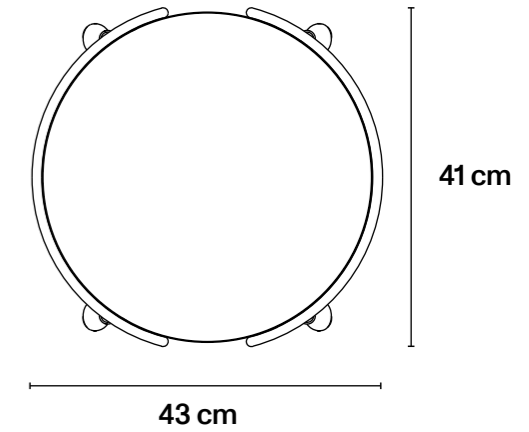
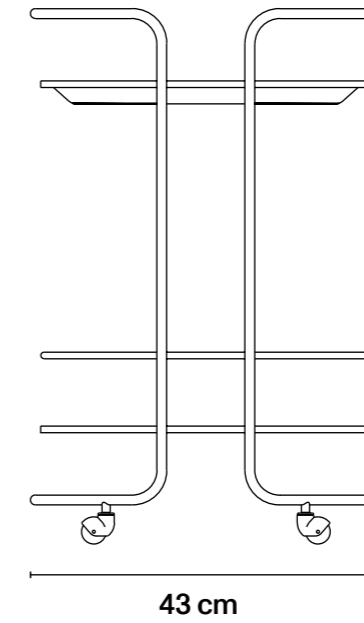
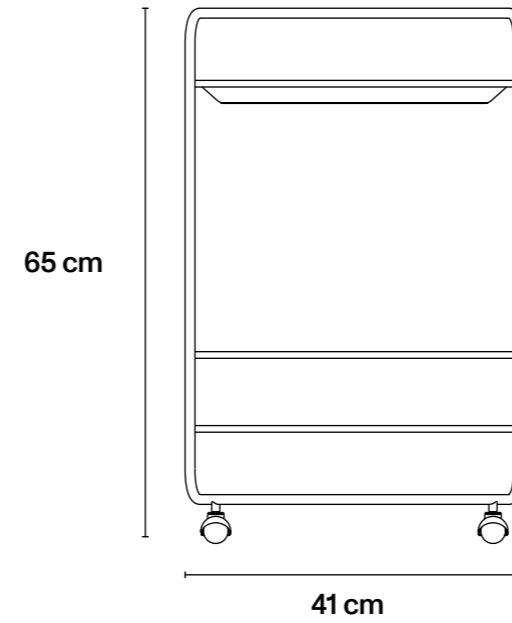
Round trolley

Technical Specifications

Tubular stainless steel structure; made to hold Ø40cm round tray; lower shelf for bottles/objects./
Struttura tubolare in acciaio Inox; realizzato per contenere il vassoio tondo Ø40cm; ripiano inferiore porta bottiglie/porta oggetti.

H 25.6 in Ø 17 in
H 65 cm Ø 43 cm

Weight/Peso: 3,5 kg



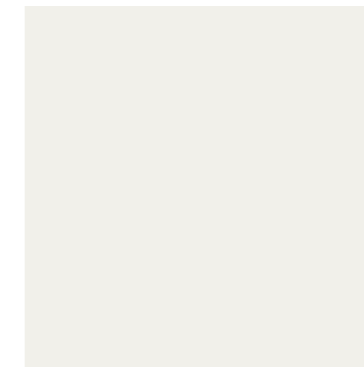
Frame Colours

Available in three matt powder-coated colours./
Disponibile in tre colori, verniciatura a polvere opaca.

MATT YELLOW → RAL 1018



MATT WHITE → RAL 9016



MATT BLACK → RAL 9005



Food Trolleys/Carrelli portavivande

Rectangular trolley

Practical and easy to handle, the trolley is suitable for both indoor and outdoor use thanks to its stainless steel structure. Specifically designed to accommodate the iconic rectangular Fornasetti trays, this accessory takes on a new look with each design and colour combination. It is available in yellow, white and black matt paint.

Pratico e maneggevole, il portavivande è adatto a un utilizzo sia per l'esterno che per l'interno grazie alla struttura in acciaio inox. Disegnato appositamente per accogliere gli iconici vassoi rettangolari Fornasetti, questo accessorio assume ogni volta una veste nuova in base all'accostamento di decoro e colore. È disponibile in giallo, bianco e nero tutti in verniciatura opaca.



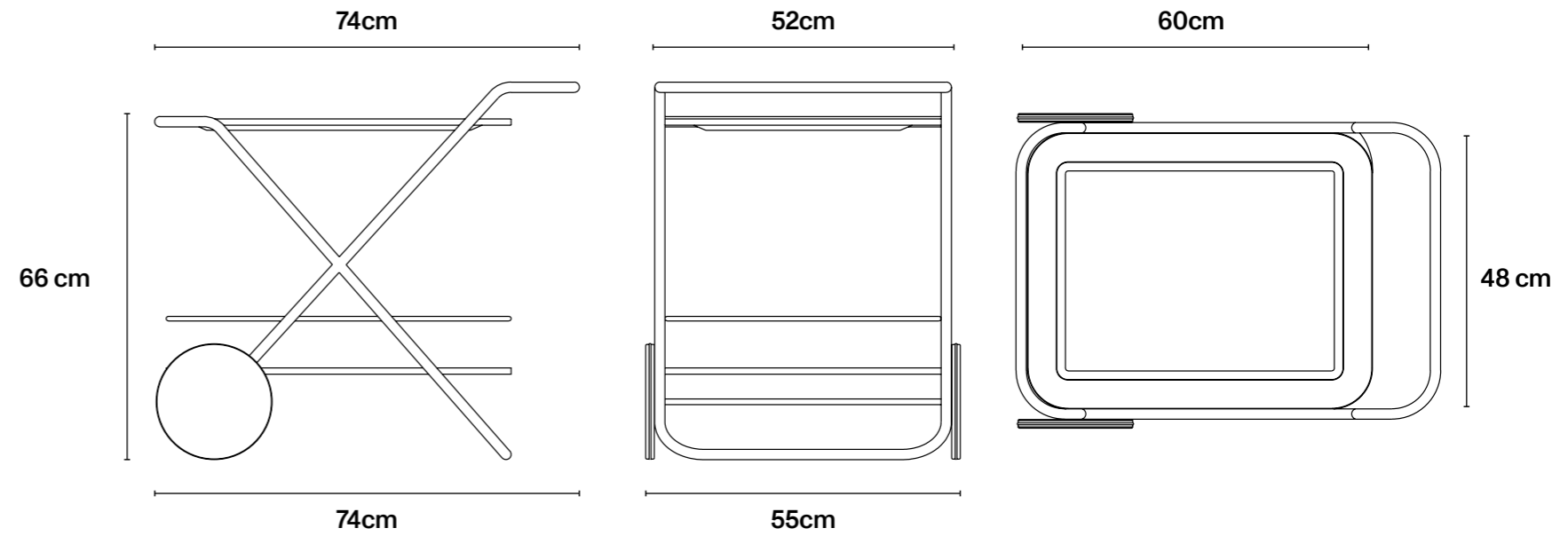
Rectangular trolley

Technical Specifications

Tubular stainless steel structure; made to hold 48×60cm rectangular tray; lower shelf for bottles/objects; large front wheels. Matt powder coating./
Struttura tubolare in acciaio Inox; realizzato per contenere il vassoio rettangolare 48×60cm ; ripiano inferiore porta bottiglie/porta oggetti; grandi ruote anteriori. Verniciatura a polvere opaca.

H 27 in W 29 in D 20.5 in
H 66 cm L 74 cm P 52 cm

Weight/Peso: 12,8 kg



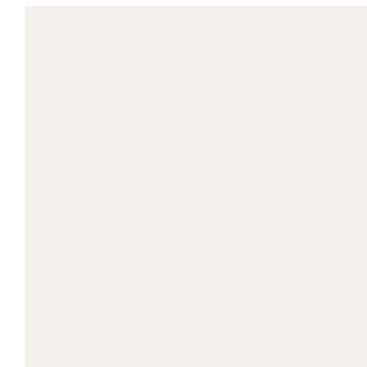
Frame Colours

Available in three matt powder-coated colours./
Disponibile in tre colori, verniciatura a polvere opaca.

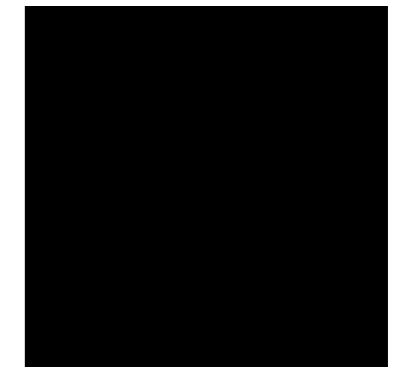
MATT YELLOW → RAL 1018



MATT WHITE → RAL 9016



MATT BLACK → RAL 9005



FORNASETTI

trade@fornasetti.com
fornasetti.com