

**Oltre lo sguardo**

**PAOLA  
LENTI**

Oltre lo sguardo

PAOLA  
LENTI

**L'essenza degli elementi** *The essence of the elements*

*Oltre lo sguardo* è l'attitudine a spingere la visione oltre i confini di ciò che è immediato, prevedibile e ordinario. Un invito ad abbracciare con gli occhi la coerenza dell'insieme attraverso i dettagli che la compongono, perché è nell'infinitamente piccolo e quasi invisibile che sovente si annidano concentrazioni elevate di bellezza. È la capacità di offrire più punti di vista, grazie ai quali cogliere una moltitudine di storie parallele, prodotti e progetti, frutto di trent'anni di relazioni, ricerca e sperimentazione. *Oltre lo sguardo* è il manifesto di un'azienda che porta a valore bellezza e autenticità quali possibili e privilegiati veicoli di un messaggio di responsabilità etica e sostenibilità culturale.

*Oltre lo sguardo – Beyond the Gaze – is the attitude of extending vision beyond the immediate, the predictable, and the ordinary. It invites us to embrace the coherence of the whole through the details that compose it, for it is in the infinitely small and nearly invisible that the highest concentration of beauty often resides. This perspective allows for multiple viewpoints, enabling one to capture a multitude of parallel stories, products, and projects born from thirty years of relationships, research, and experimentation. Oltre lo sguardo is the manifesto of a company that values beauty and authenticity as the possible and privileged vehicles for a message of ethical responsibility and cultural sustainability.*



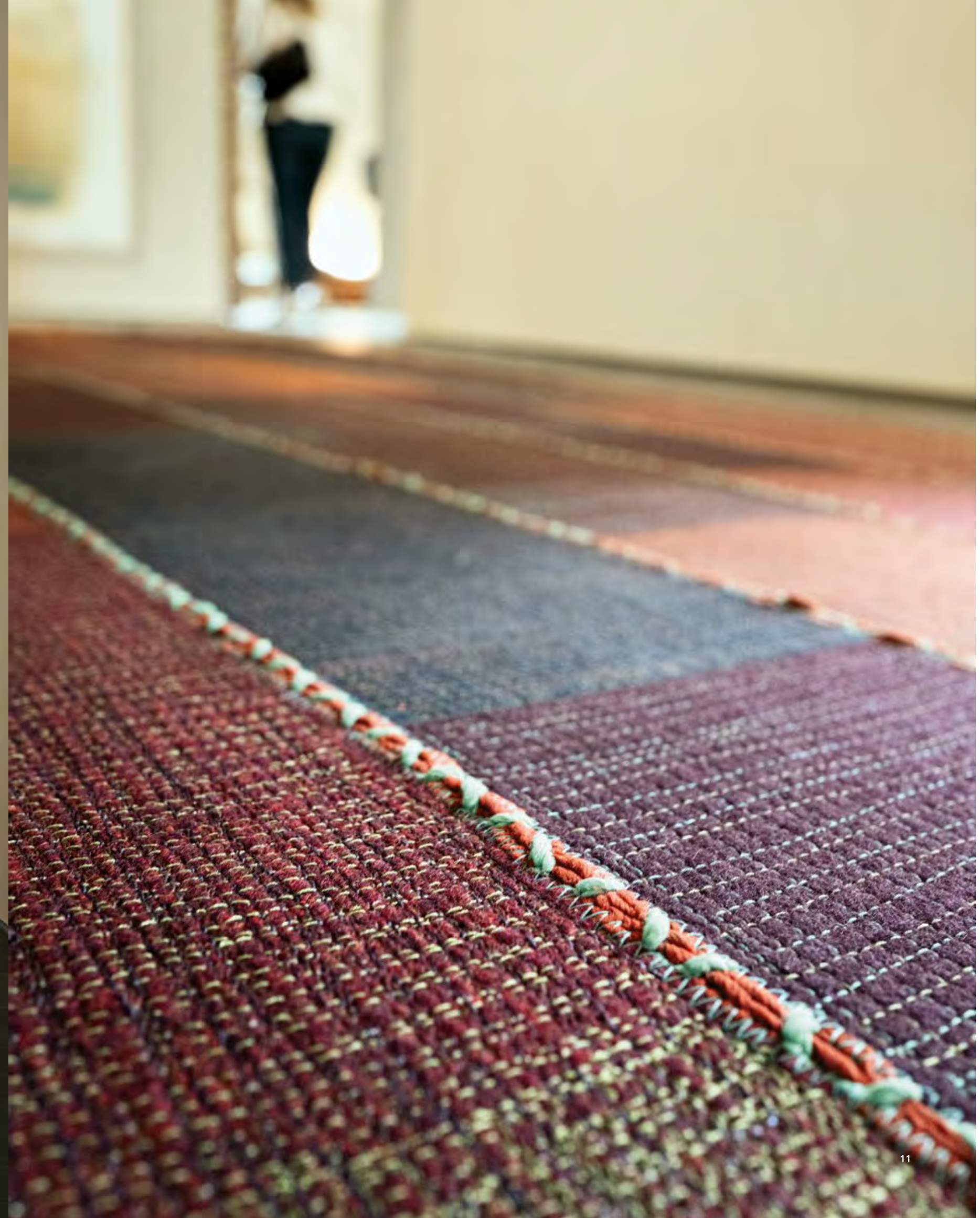
## **Dentro le stanze di Àlfa** *Inside the rooms of Àlfa*

All'interno di «Àlfa, la casa possibile» prende forma una visione per l'abitare che è espressione di una conoscenza approfondita di materiali, tessuti, tecniche di lavorazione artigianali, nonché di una non comune sensibilità al colore. Gli arredi della collezione indoor, insieme a prodotti unici, disegnati su misura, dialogano con mobili e complementi appartenenti a epoche e linguaggi diversi, oggetti e opere d'arte, generando un ambiente che è il risultato di una raffinata stratificazione di codici estetici e culturali. Costruita con elementi strutturali naturali, Àlfa offre una prospettiva che guarda oltre l'abitare e invita a riflettere sulla possibilità di vivere più a contatto con la natura.

*Within "Àlfa, la casa possibile" — an ideal home — , a vision for living emerges that embodies profound knowledge of materials, fabrics, and artisanal techniques, coupled with a unique sensitivity to colour. The furnishings of the indoor collection harmonize with bespoke items, engaging with furniture and accessories spanning different eras and styles, as well as artworks and objects. This interaction creates an environment where aesthetic and cultural layers converge seamlessly. Constructed from natural structural elements, Àlfa offers a perspective that transcends mere living, prompting contemplation on the possibility of a more intimate connection with nature.*



NOMADE rug in Felt MTT50 colour hue





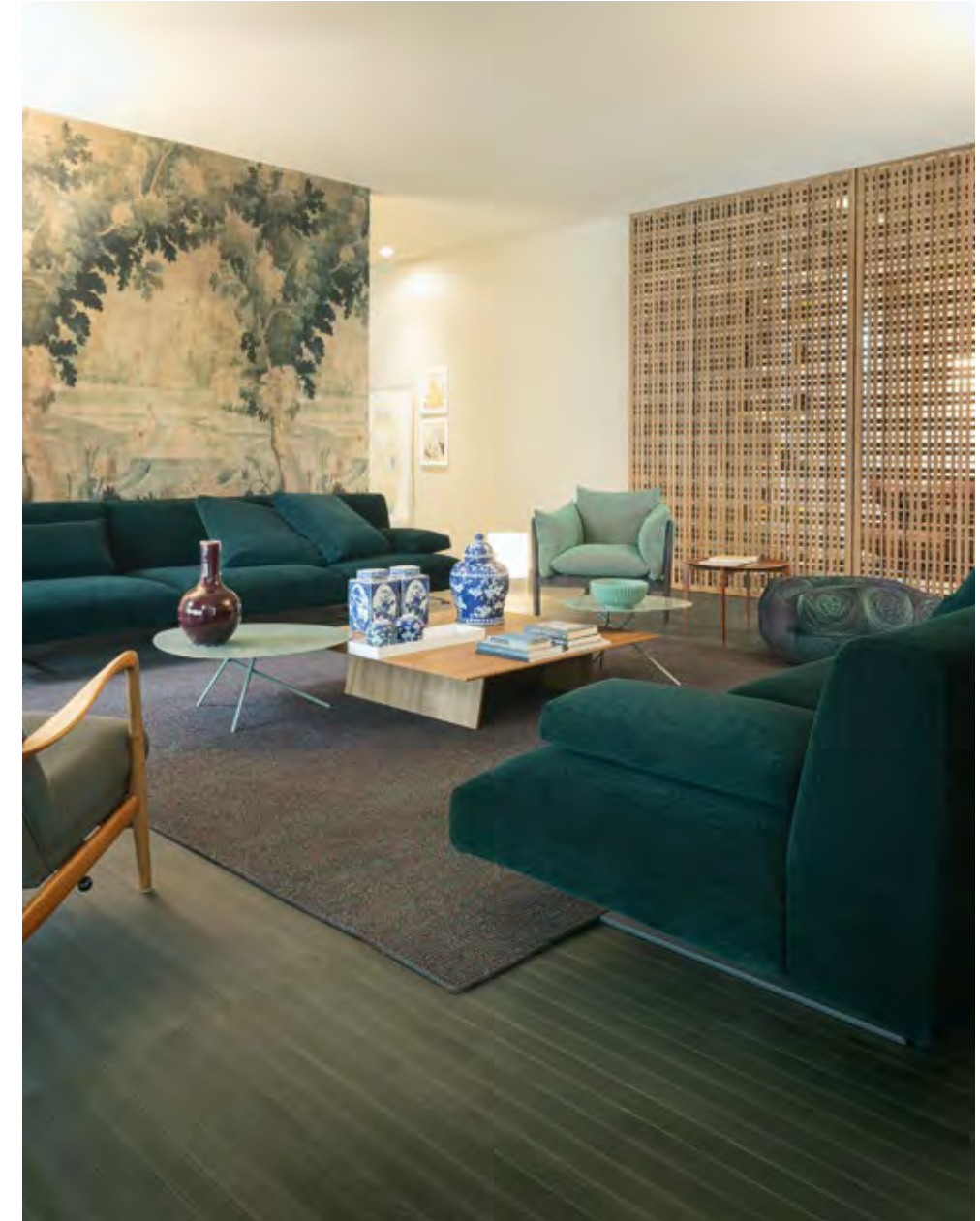
MOVE sofas in Byron BYR019, cushions in Byron BYR019, BYR022 steel base ME021 | KANJI side table in oak wood LE251, steel tray LML342  
LEVER side table, steel top LML139 | GHIRIGORO poufs in embroidered Felt: MTF07 pattern, MTT28 colour hue (front), MTF10 pattern, MTT28 colour hue (back)  
PARALLELO rug in Moss cord CMS200A | Custom-made fireplace covered with Esmal copper tiles ESM075



Detail of custom-made fireplace covered with Esmal copper tiles ESM075



Opposite page: MOVE sofas in Byron BYR019, cushions in Byron BYR019, BYR022, steel base ME021 | TAPIO armchair in Blend BD126, wooden structure LE295

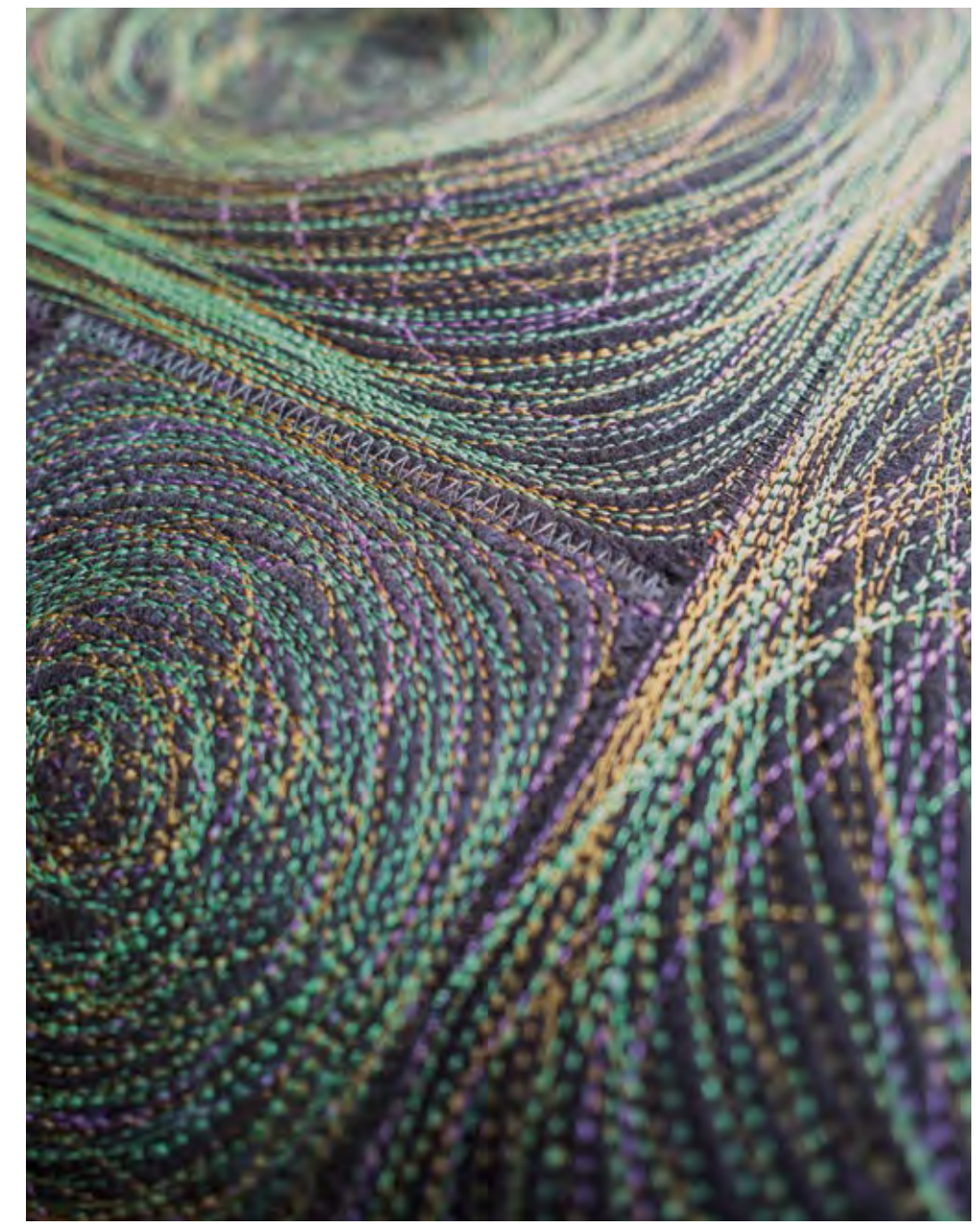




Opposite page: GHIRIGORO poufs in embroidered Felt, MTF10 pattern, MTT28 colour hue



KANJI side table in oak wood LE251, steel tray LML342 | LEVER side tables, steel top LML139  
GHIRIGORO pouf in embroidered Felt, MTF07 pattern, MTT28 colour hue | PARALLELO rug in Moss cord CMS200A





EUCLIDE cabinet LML140

**Per filo e per segno** *Threads and patterns*

Le superfici tessili sono atti manuali, coinvolgono saperi artigianali e manifatturieri che senza limiti indagano processi di produzione, materiali e colori. I fili di cucitura, imprevedibili nel loro andamento, oppure regolari a formare pattern, sono elementi dinamici che uniscono, legano, avvolgono, rivestono. Sono il segno identificativo di prodotti riconoscibili e al tempo stesso irripetibili.

*Textile surfaces are handcrafted expressions, integrating artisanal and manufacturing expertise to endlessly explore production processes, materials, and colours. Sewing threads, whether unpredictable in their flow or regular in forming patterns, serve as dynamic elements that unite, bind, envelop, and upholster. They represent the distinctive mark of products that are both recognizable and yet impossible to replicate.*



ELON table, top in ash wood Abonos™ LE231, base and top edge in oak wood | ELSIE chairs in Medium MED014, wooden legs LE263  
Opposite page: detail of ELON table, top in ash wood Abonos™ LE231, base and top edge in oak wood





AGIO sofa in Palladio PAL010, wooden base LCO021 | ZOE rug in wool cord CLM976, custom colour hue



SOSPESA bookshelves, wooden shelves LML128, steel supports ME021 | *Opposite page:* detail of ZOE rug in wool cord CLM976, custom-made colour hue





SILENT bed, bedframe and headboard in Blend BD172, wooden details LE295 | FLIP side table, wooden top LML313 | ZOE rug in wool cord CLM977, custom colour hue



Detail of SILENT bed headboard in Blend BD172, wooden details LE295 | *Opposite page:* detail of INTERMEZZO bookshelf Esmal panel ESM053





SILENT bed, bedframe and headboard in Blend BD172, wooden details LE295 | FLIP side table, wooden top LML313  
ZOE rug in wool cord CLM977, custom colour hue | INTERMEZZO bookshelf, Esmal panels ESM053, steel structure ME021



**Libertà di immaginazione** *Freedom of imagination*

Smalto, fusioni, essenze. Piani e rivestimenti sono espressione della materia che lasciata libera asseconda la sua natura. La visione di ogni superficie, orizzontale o verticale, innesca connessioni, nutre l'immaginazione e il sogno, alimenta l'ispirazione quotidiana. I paesaggi domestici sono luoghi di scoperte continue, campi creativi dalle infinite possibilità.

*Enamel, fusions, woods. Surfaces and coverings are expressions of the material, which, when left free, follows its own nature. Observing each surface, whether horizontal or vertical, stimulates connections, nurtures imagination and dreams, and fuels daily inspiration. Domestic landscapes are places of continuous discovery, creative fields with infinite possibilities.*



Detail of custom-made kitchen worktop covered with Sciara tiles PV053



Custom-made kitchen work island, worktop covered with Sciara tiles PV053 | GIORGIO side table/cart, tops with white ash wood frame LE229, steel structure LML342  
RESORT bookshelves, shelves in Aurea Optima ash wood LE232, aluminium uprights LML133



Custom-made kitchen work island, worktop covered with Sciara tiles PV053  
RESORT bookshelves, shelves in Aurea Optima ash wood LE232, aluminium uprights LML133



RESORT bookshelves, shelves in Aurea Optima ash wood LE232, aluminium uprights LML133  
Opposite page: detail of custom-made kitchen work island, worktop covered with Sciara tiles PV053



GIORGIO side table/cart, tops with white ash wood frame LE229, steel structure LML342



LINEA chaise longue in Roseto RSTA002 | STRAP side table, Esmal top ESM062



ALL-TIME sofa in Vigevano VIG015, cushions in Qillqay QIL003 and in Tara TAR005  
SHIBUSA armchair in turned bamboo LE223, tatami seating in igusa  
STRAP side tables, Esmal top ESM072, aluminium base ME021 | ZEBRÙ pouf in loom woven bouclé fabric, colour hue MTT01  
TWEED rug in polyester yarn TWD015 | Custom-made cabinet LML129, steel base ME021



Detail of Kiru fabric KIR001





Custom-made cabinet LML129, steel base ME021 | *Opposite page:* detail of ZEBRÙ pouf loom woven bouclé fabric, colour hue MTT01



**Mottainai** Che spreco rinunciare! *What a waste to give up!*

L'essenza delle cose e il rimpianto di vederle sprecate. A questi due concetti, espressi dalla parola giapponese Mottainai, si ispira un progetto aziendale che è finalizzato a restituire funzione e dignità estetica alle eccedenze di produzione, diventando così occasione per sperimentare con i tessuti esclusivi Paola Lenti percorsi creativi fuori dagli schemi. A scrivere i primi due capitoli di questo racconto progettuale sono stati chiamati dall'Est e dall'Ovest del mondo due studi di fama internazionale. Lo studio giapponese Nendo, invitato a infondere nuova vita ai ritagli di tessuto a rete Maris e a creare, attraverso semplici gesti manuali, la famiglia di arredi e complementi Hana-arashi. Lo studio brasiliano dei fratelli Humberto e Fernando Campana che, conoscute le peculiarità di tessuti, filati e corde, ne hanno disvelato con la collezione Metamorfofi possibilità inaspettate.

*The essence of things and the regret of seeing them wasted—these concepts, captured by the Japanese word Mottainai, inspired a company project aimed at restoring function and aesthetic dignity to production surplus. This initiative became an opportunity to explore unprecedented creative paths with Paola Lenti's signature fabrics. The first two chapters of this project's story were written by two internationally renowned firms from the east and west of the world.*

*The Japanese firm Nendo was invited to breathe new life into offcuts of Maris open-weave fabric, creating the Hana-arashi family of furnishings and complements through simple, manual gestures. The Brazilian firm led by brothers Humberto and Fernando Campana explored the unique qualities of fabrics, yarns, and cords, unveiling unexpected possibilities with their Metamorfofi collection.*



**Hana-arashi**



HANA-ARASHI armchairs in Maris, colour hues MTT03 and MTT09; pouf in Maris, colour hue MTT09



HANA-ARASHI pouf in Maris, colour hue MTT09 | Detail of HANA-ARASHI suspension lamp in Maris, colour hue MTT03

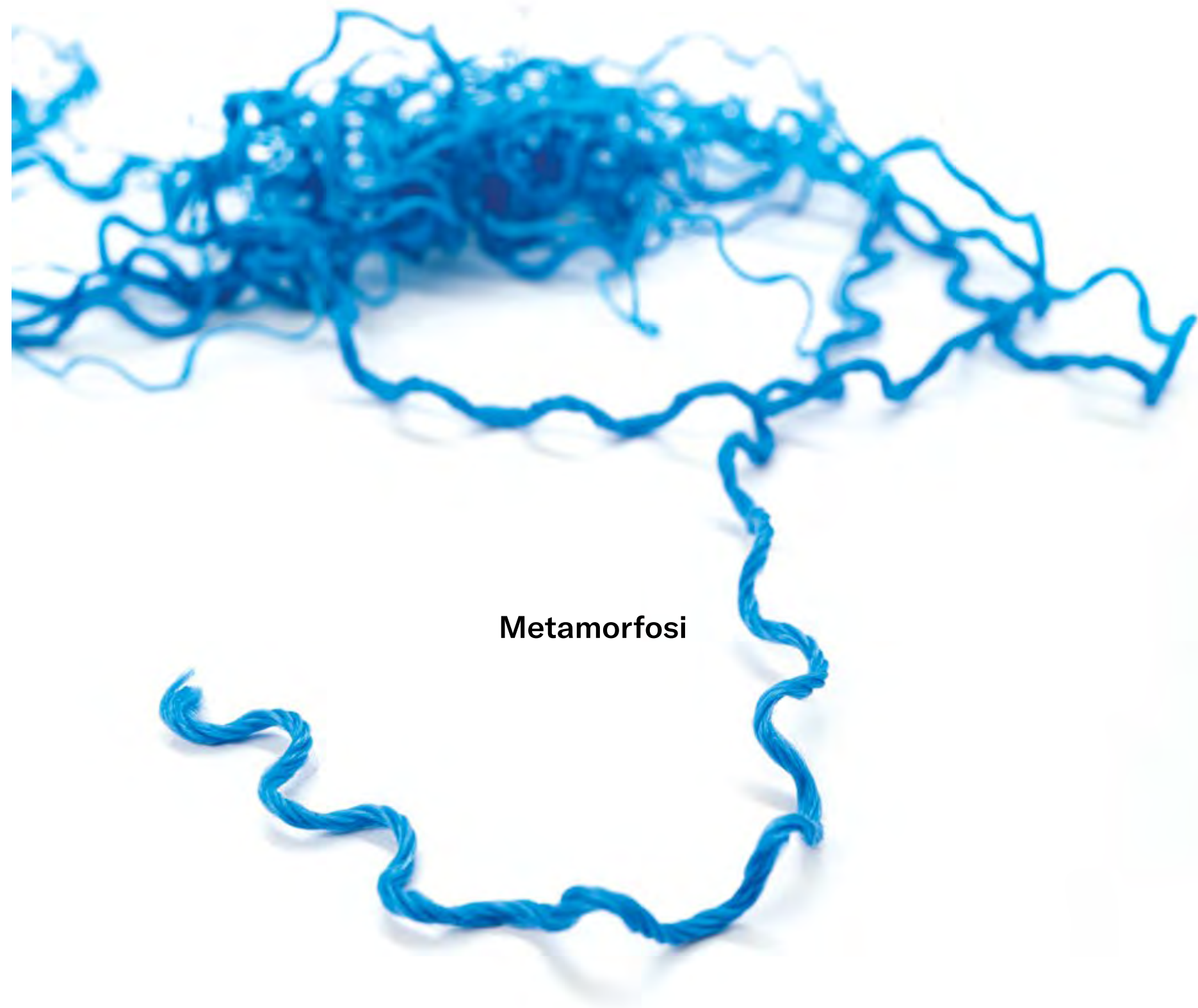




HANA-ARASHI pouf in Maris, colour hue MTT02 | *Opposite page:* detail of HANA-ARASHI floor lamp in Maris, colour hue MTT05



HANA-ARASHI collection in Maris fabric: floor lamps, colour hue MTT05; suspension lamps, colour hues MTT03; poufs, colour hues MTT09 (left), MTT02 (right); baskets, colour hues MTT07 (left), MTT02 (right); armchair, colour hue MTT03





METAMORFOSI collection: CHROMODORO platform, décor MTF02, colour hue MTT01; BRUCO seating, décor MTF08, colour hue MTT26 (top), décor MTF01, colour hue MTT19 (middle), décor MTF01, colour hue MTT13 (bottom); ZOIDE platform, colour hue MTT08



BRUCO seating, décor MTF09, colour hue MTT26











CHROMODORO platform, décor MTF02, backrest in Maglia Rasata, colour hue MTT01







## **Il cielo sopra i giardini** *The sky above the gardens*

La proposta per l'outdoor nasce dal pensare gli spazi all'aperto come luoghi da abitare nella vita di tutti i giorni. Fa, quindi, parte di una visione più ampia che considera importante la qualità dell'ambiente esterno e il benessere delle persone che lo vivono.

Elementi architettonici, mobili e complementi sono studiati per essere amichevoli, durevoli, confortevoli e belli, capaci di instaurare con gli scenari naturali un dialogo armonioso che diventa fonte di ispirazione. Cromie inedite, decori inimitabili, tessuti tecnici, produzioni artigianali definiscono raffinati ambienti living a cielo aperto.

*The outdoor offering originates from the thinking of open-air spaces as places to live in everyday life.*

*It is part of a wider vision that considers important the quality of the outdoor environment and the well-being of the people who experience it.*

*Architectural elements, furniture and complements are conceived to be friendly, enduring, comfortable and captivating, capable of creating with the natural surroundings a harmonious dialogue, which becomes source of inspiration. Inedited colour shades, inimitable decorations, technical fabrics, and handcraft productions define exquisite outdoor living spaces.*







WELCOME sofa in Whim WH025, Maglia Rasata cushions MGR067, MGR142, MGR144 | OASI seating element in Whim WH016, Maglia Rasata cushion MGR269, aluminium panel LML337 | BRUCO seating, décor MTF09, colour hue MTT26 | BOUQUET side table, natural lava stone with glass décor tops PN003, steel base ME451 | ELIO side table, top in elm wood Abonos™ LE233, steel base ME021 | GIRO side table, Luce top LV9644, aluminium base ME021 | STRAP side tables, Esmal top ESM074 (top), ESM054 (bottom), aluminium base ME021 | FRAME bench in Rope TR3128 | BISTRÒ flat parasol in Tamil TM38, aluminium structure ME002 | JALI rug in Twiggly TYJA027 | LENTA floor lamps



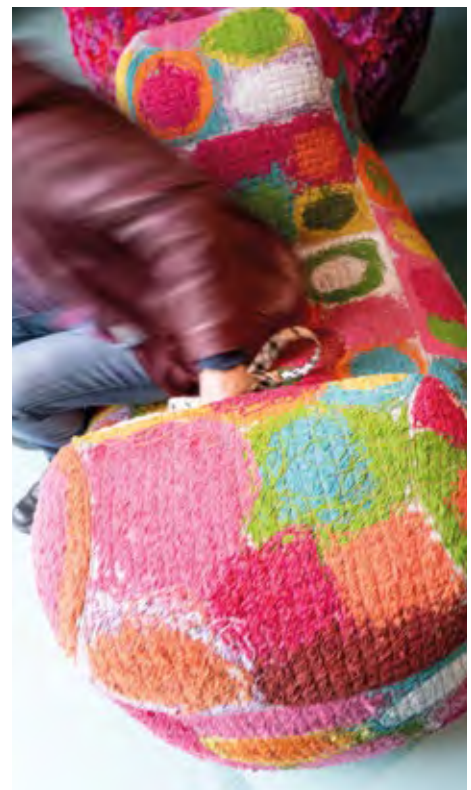
OASI seating element in Whim WH016, Maglia Rasata cushion MGR269, aluminium panel LML337 | GIRO side table, Luce top LVS644, aluminium base ME021  
STRAP side table, Esmal top ESM061, aluminium base ME021 | JALI rug in Twiggy TYJA027



WELCOME sofa in Whim WH025, Maglia Rasata cushions MGR067, MGR142, MGR144 | FRAME bench in Rope TR3128 | BISTRO flat parasol in Tamil TM38, aluminium structure ME002 | JALI rug in Twiggy TYJA027



BRUCO seating, décor MTF09, colour hue MTT26 | STRAP side table, Esmal top ESM054, aluminium base ME021  
ANEMONE side table in majolica CER905 | JATI rug in Twiggy TYJA027 | BAGS bag in Rope cord T1503





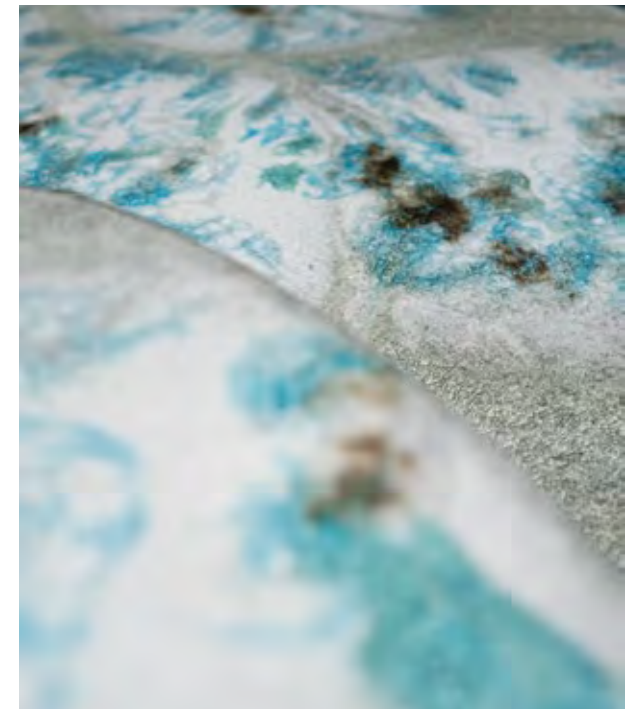
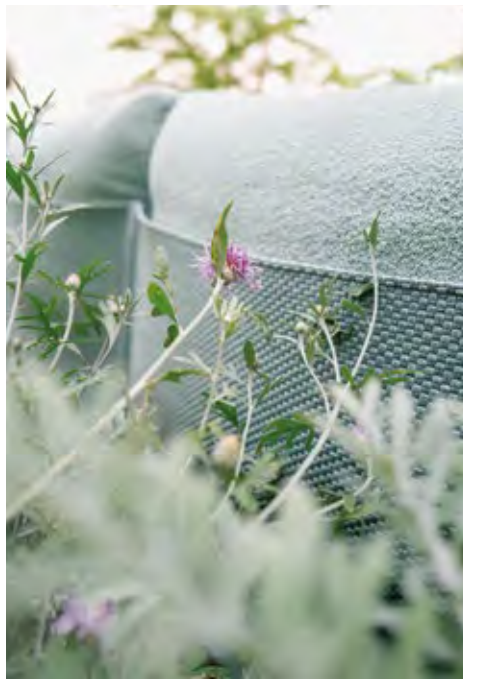
POD lounge chairs in Costa Inglese PPD011 | Opposite page: VESPUCCI sofa in Aquatech AT203, cushions in Whim WH023, Maglia Rasata cushions MGR250, MGR262, structure in sassafra wood LE002 | SCIARA side tables, lava stone and glass top PV083, steel base ME451 | STRAP side tables, Esmal top ESM056, aluminium base ME021 | RESORT shading structure in Thuia TH1991, aluminium frame LML329 | NET 10 rug in Maris TYT108139

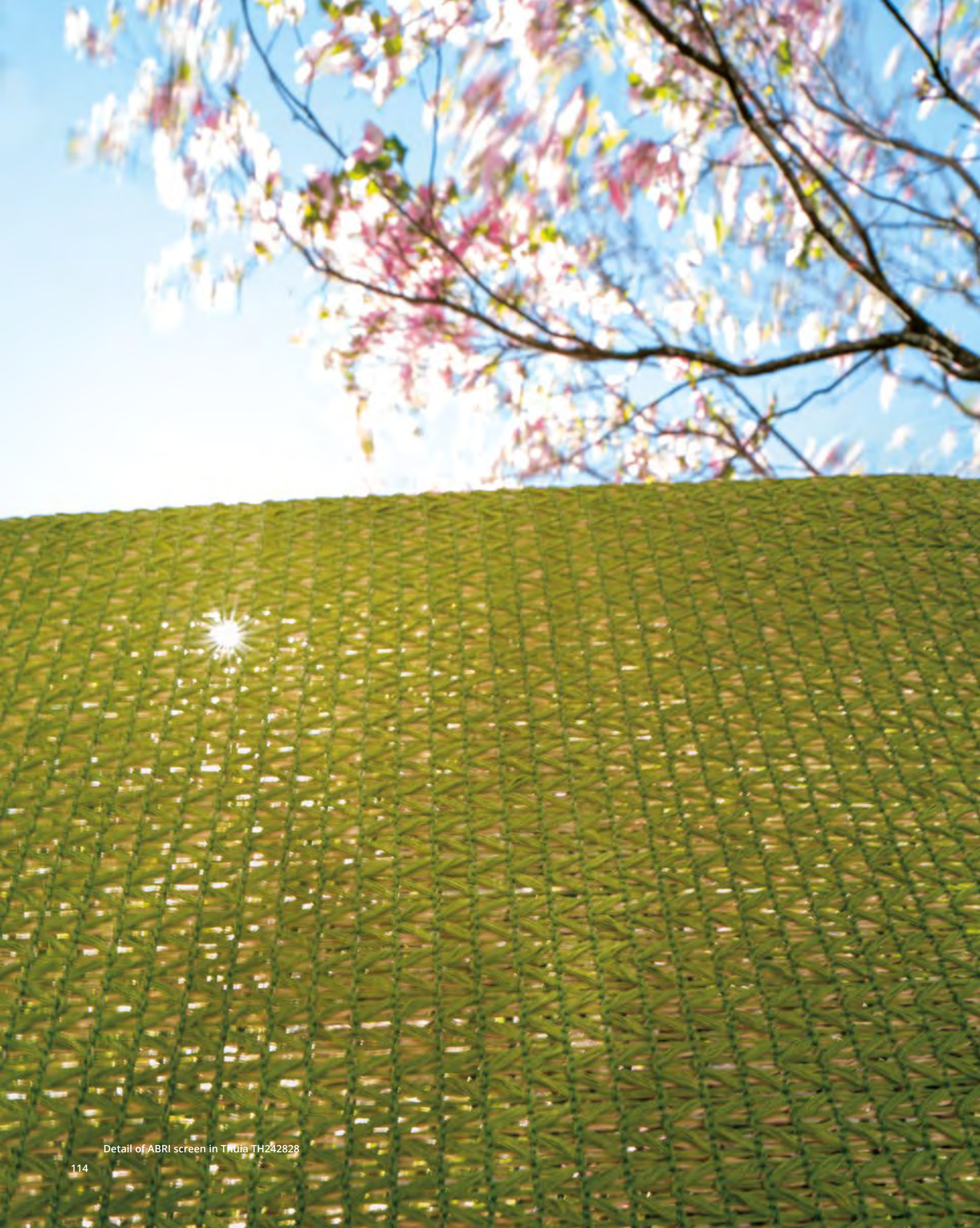


POD lounge chairs in Costa Inglese PPD011 | Detail of SCIARA side table lava stone and glass top PV083



VESPUCCI sofa in Aquatech AT203, cushions in Whim WH023, Maglia Rasata cushions MGR250, MGR262, structure in sassafras wood LE002





Detail of ABRI screen in Thua TH242828





CONCRETO table in Seres CONF44S | PORTOFINO chairs in Tamil TM34, cushions in Whim WH013, structure in black locust wood LE247  
RESORT shading structure in Thuia TH1991, aluminium frame LML329 | LUCERNA suspension lanterns woven with Twitape yarn TP6100, steel structure LML337

**I colori della luce** *The colours of light*

La ricerca sul colore, sul comportamento delle materie e sulle lavorazioni manuali si esprime in una qualità estetica che sfugge a ogni classificazione e che è il risultato di occhi che portano alla luce contenuti nuovi e inespressi, trasformando superfici e oggetti apparentemente ordinari in esperienze visive e intellettuali stimolanti e seducenti.

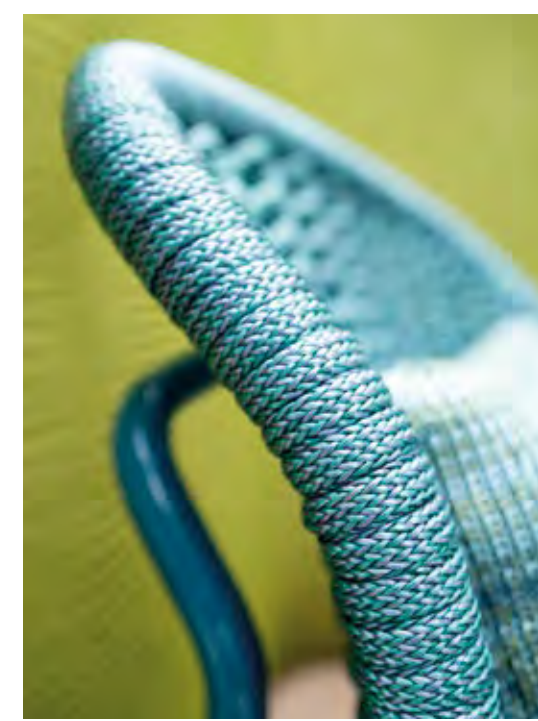
*The research on colour, the behaviour of materials, and handcraft techniques expresses itself in an aesthetic quality that escapes any classification. It is the result of an approach that brings to light new and unexpressed contents, transforming apparently ordinary surfaces and objects into stimulating and enticing visual and intellectual experiences.*

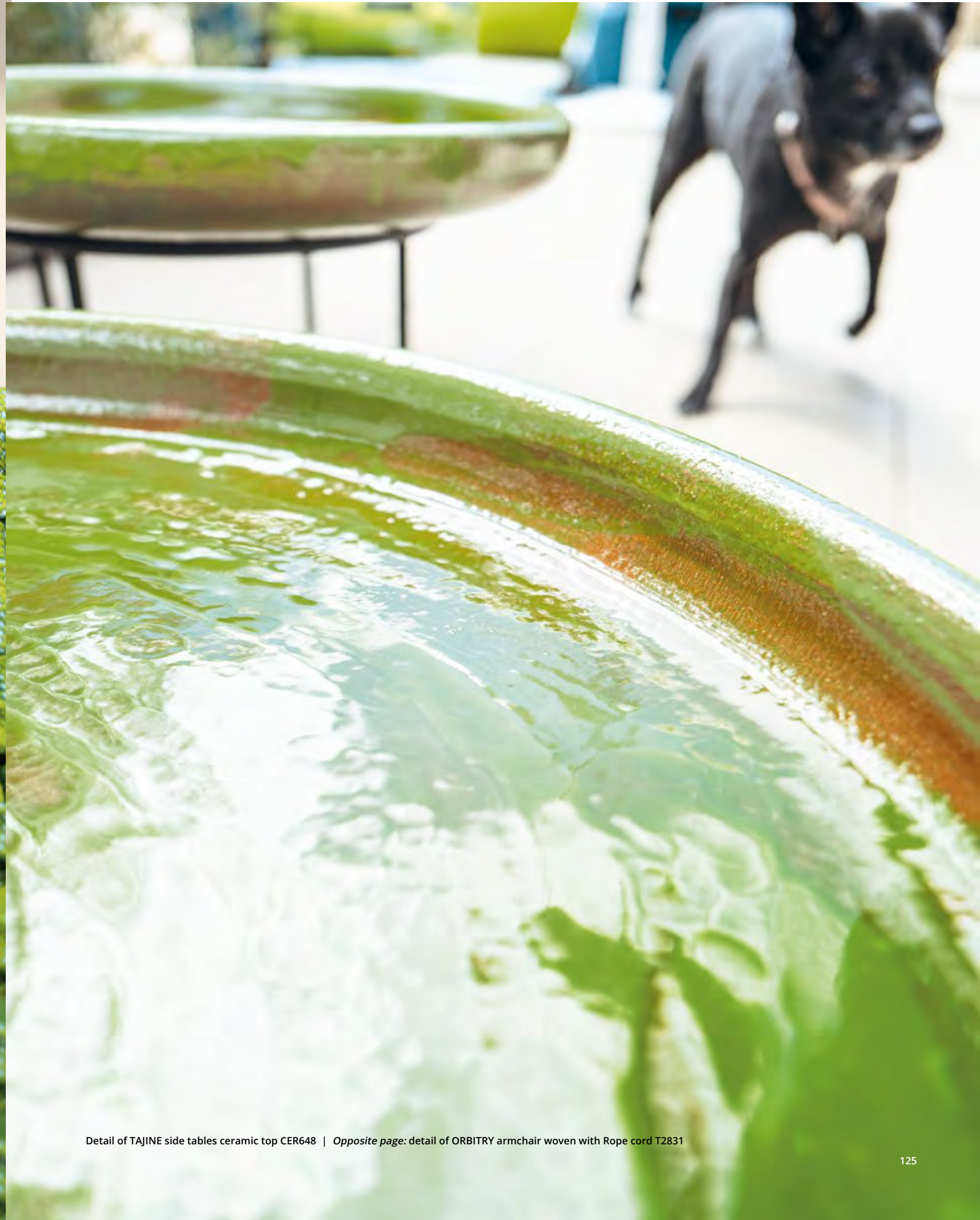
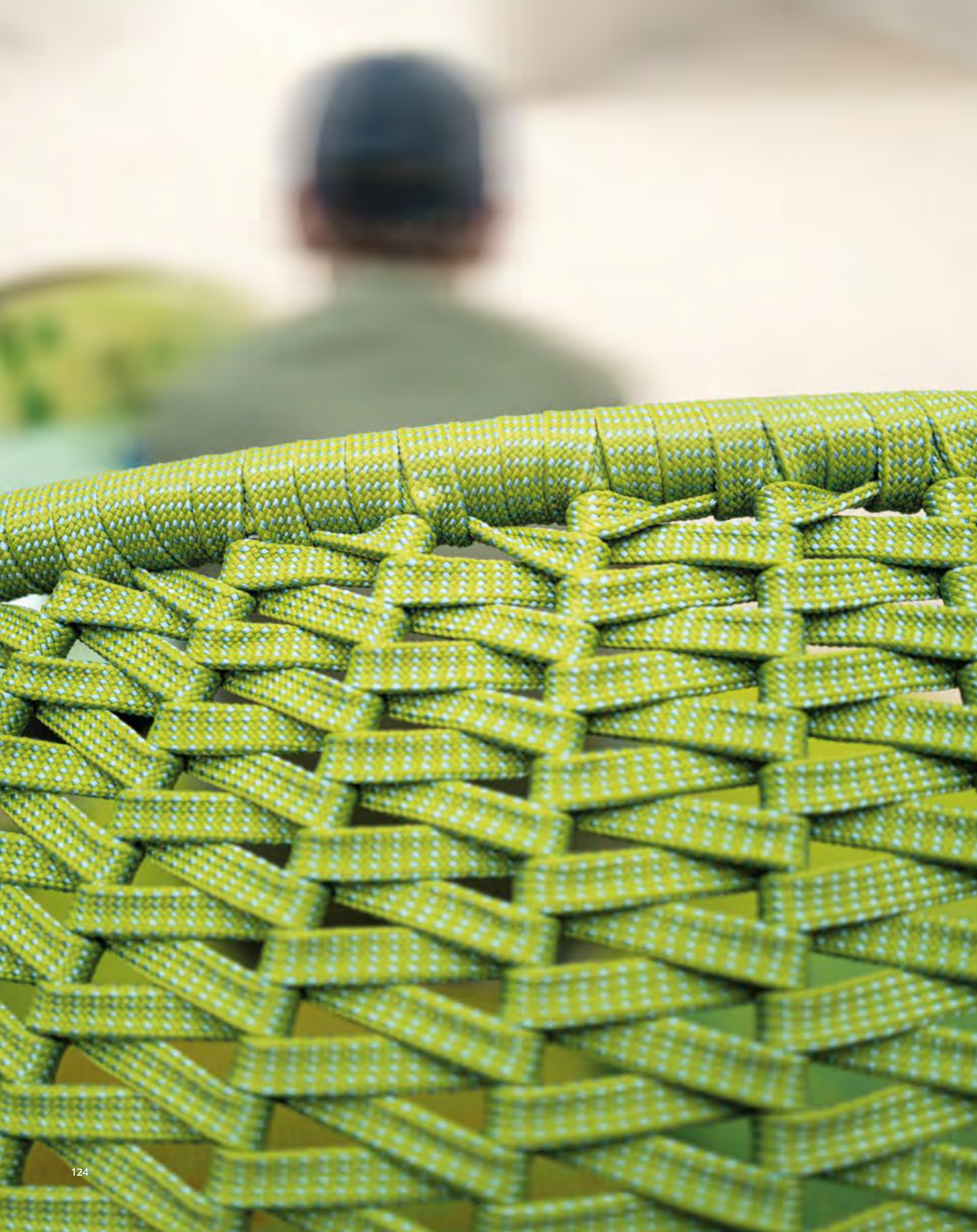


JARDÍN lounge chairs woven with Twiggly cord TYT120, aluminum base LML125, Maglia Rasata cushions MGR248, MGR249  
CERCHI side table in majolica CER815 | ABRI screens in Thua TH242828



ABRI screens in Thulia TH242828

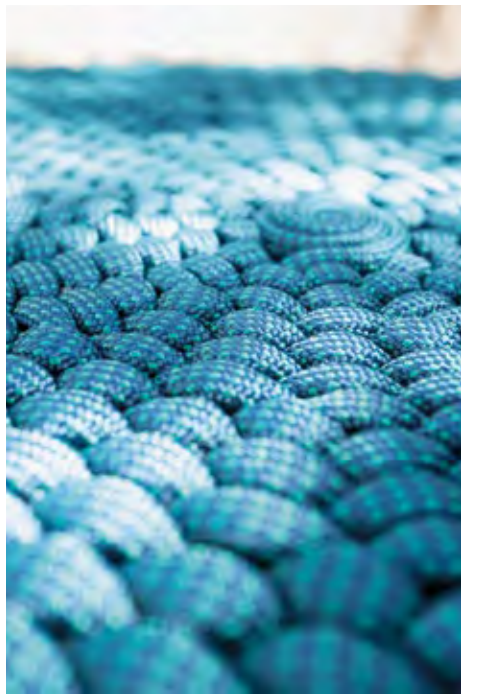


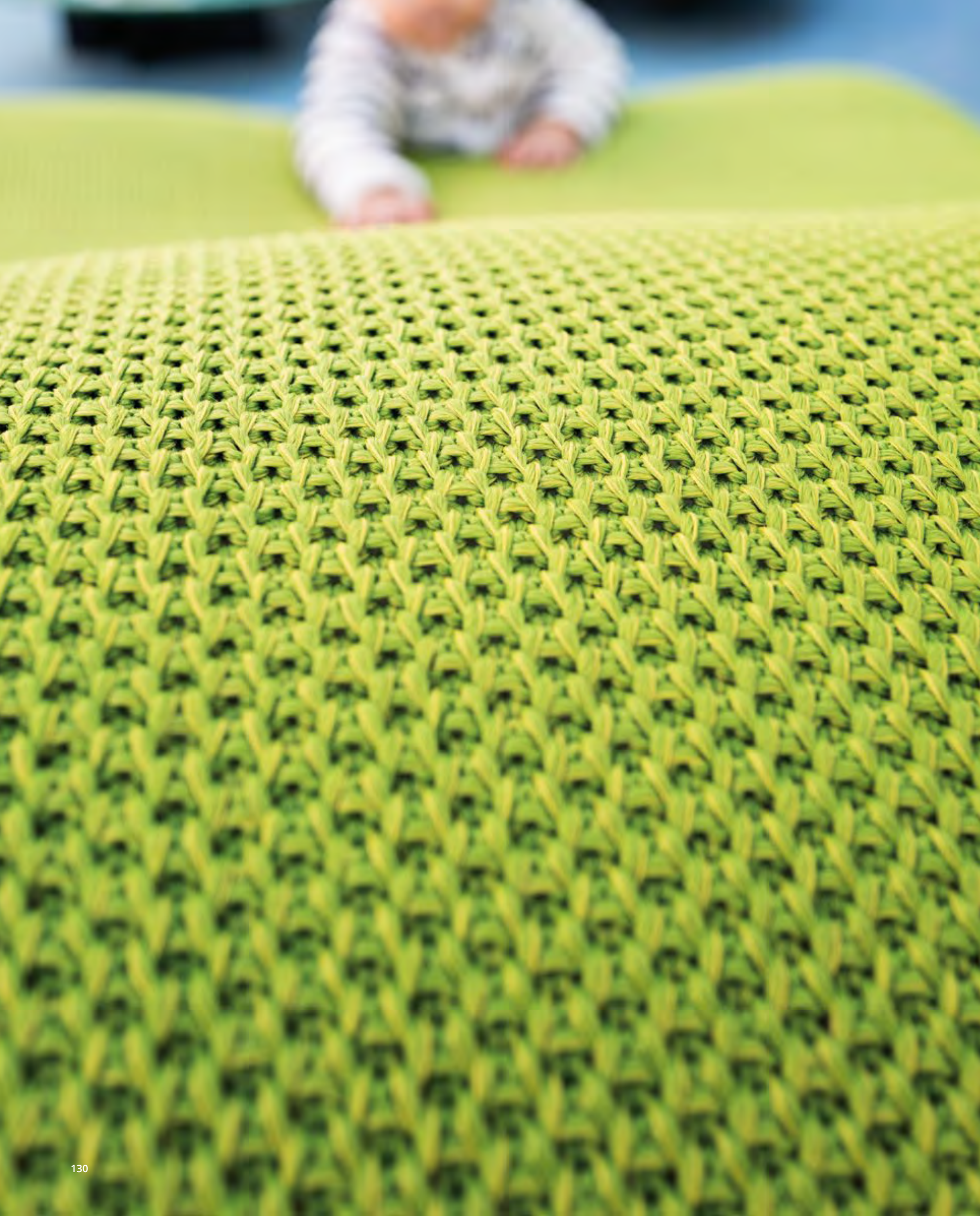


Detail of TAJINE side tables ceramic top CER648 | *Opposite page:* detail of ORBITRY armchair woven with Rope cord T2831



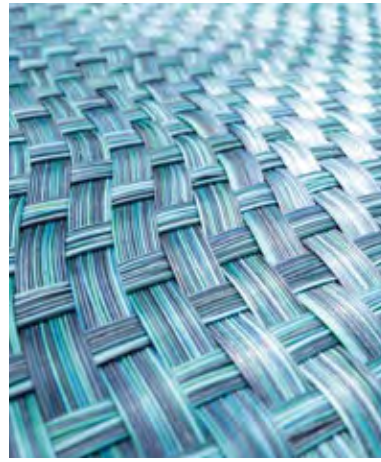
SANTORINI sofas in Moss MS109, Maglia Rasata cushions MGR246, MGR248, MGR250, MGR251, MGR253, steel base ME021; side tables in Aurea Optima elm wood LE233, steel structure LML339 | FLOAT ON lounge chairs in Grana di Riso MRS001 | SHELL poufs woven with Rope cord T0462 | ELIO side table, top in elm wood Abonos™ LE233, steel base ME02 | STRAP side table, Esmal top ESM061, aluminium base ME021 | HELICO side table, majolica base CER835, CER688, CER646, custom combination, glass top | ISOLE side tables, Sciarra top PV703 (left), PV702 (right) | BISTRÒ flat and dome-shaped parasols in Tamil TM38, aluminium structure ME002 | ZOE rugs in Twigg cord TYT139146 | LENTA floor lamps







SANTORINI sofas in Moss MS109, Maglia Rasata cushions MGR246, MGR248, MGR250, MGR251, MGR253, steel base ME021; side table in Aurea Optima elm wood LE233, steel structure LML339 | SHELL pouf woven with Rope cord T0462 | ELIO side table, top in elm wood Abonos™ LE233, steel base ME021 STRAP side tables, Esmal top ESM058 (left), ESM061 (right), aluminium base ME021 | SOLE side tables, Sciara top PV703 (left), PV702 (right) BISTRO flat and dome-shaped parasols in Tamil TM38, aluminium structure ME002 | ZOE rug in Twigg cord TYT139146



SANTORINI sofa in Moss MS109, Maglia Rasata cushions MGR246, MGR248, MGR250, MGR251, MGR253, steel base ME021; side table in Aurea Optima elm wood LE233, steel structure LML389 | FLOAT ON lounge chairs in Grana di Riso MRS001 | SHELL pouf woven with Rope cord T0462 | STRAP side table, Esmal top ESM058, aluminium base ME021 | HELICO side table, majolica base CER835, CER688, CER646, custom combination, glass top | ISOLE side tables, Sciara top PV703, PV702 | ZOË rug in Twiggy cord TYT139146



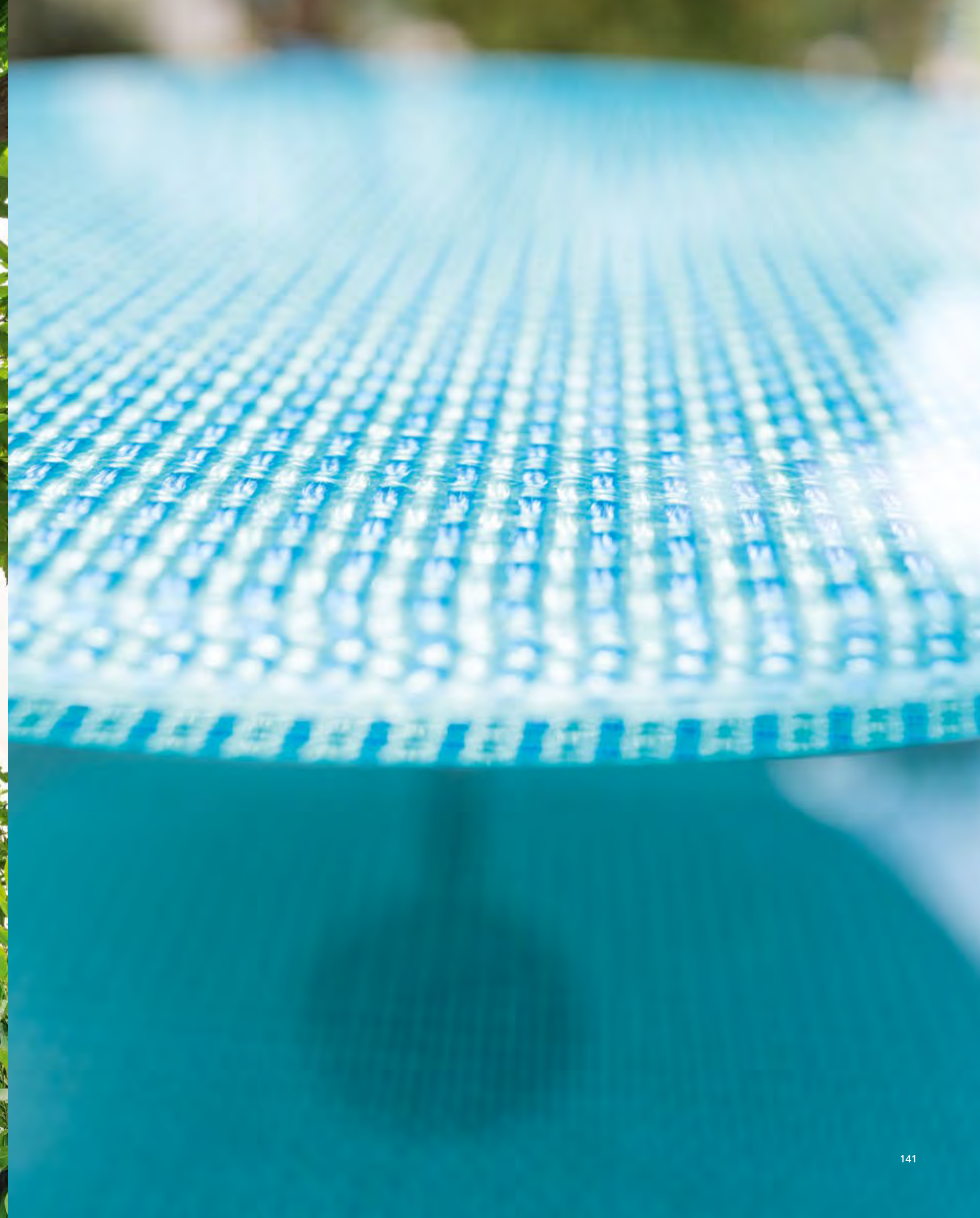
Detail of HELICO side table majolica base CER835, CER688, CER646 and glass top



ALTOPIANO table, top in Cristal CR899131, accessories in Cristal CR989885 (rectangular one), CR988590 and CR908598 (round ones), aluminium structure LML135  
CAPRI chairs in Brio BT262620, aluminium and steel structure LML135 | BISTRÒ flat parasol in Tamil TM38, aluminium structure ME002



ALTOPIANO table, top in Cristal CR899131, accessories in Cristal CR989885 (rectangular one), CR988590 and CR908598 (round ones), aluminium structure LML135  
CAPRI chairs in Brío BT262620, aluminium and steel structure LML135 | BISTRO dome-shaped parasol in Tamil TM38, aluminium structure ME002



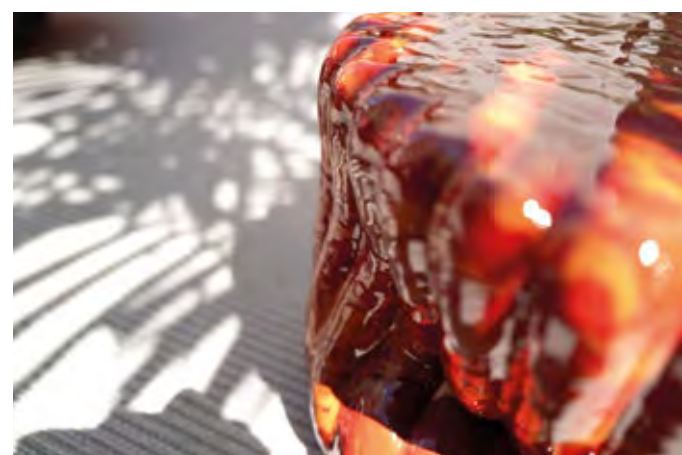
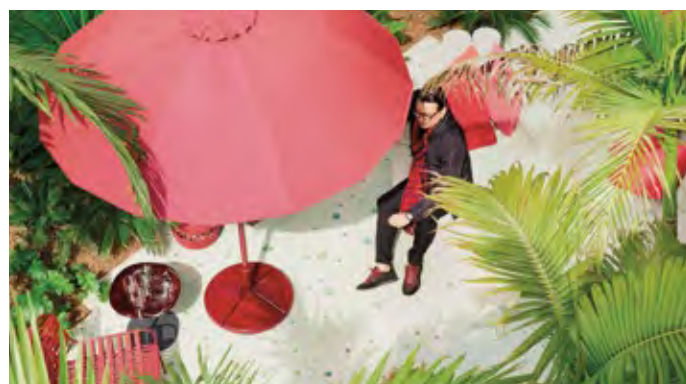
**Sensazioni tattili** *Tactile sensations*

Studio, sperimentazione e sviluppo di filati multicolore hanno portato alla creazione di tessuti che superano l'idea di rivestimento e le cui caratteristiche sensoriali, mirando a realizzare paesaggi abitativi immaginifici, rendono omaggio a un approccio all'outdoor che stabilisce da trent'anni traguardi sempre nuovi, rappresentando un'avanguardia e punto di riferimento.

*The study, experimentation, and development of multicoloured yarns have led to the creation of fabrics that transcend traditional upholstery. These textiles and their sensory characteristics, designed to evoke imaginative living environments, celebrate an avant-garde approach to outdoor spaces. For thirty years, this approach has set new benchmarks and continues to be a pioneering reference in the field.*



KIORI armchairs and sofas woven with Conwood strips LE231, cushions in Felce FLC001, Maglia Rasata cushions MGR032, MGR042, structure in sassafras wood LE002 | ISOLE side tables, Sciara top PV704 | ANEMONE side tables in majolica, CER901 (left), CER903 (right) PRIMULA side table, majolica base CER826, glass top | STRAP side table, Esmal top ESM067, aluminium base ME021 BISTRÒ dome-shaped parasols in Tamil TM15, aluminium structure LML983 | PARALLELO rug in Twiggly cord TYT061





Details of Opus vetro floor tiles MSDP018V



ISOLE side tables, Sciara top PV704 | ANEMONE side tables in majolica, CER901 (top), CER903 (bottom)  
PRIMUM side table, majolica base CER826, glass top | PARALLELO rug in Twiggy cord TYT061



ELIANTO platform in Whim WH003, cushions in Moss MS077, MS082, MS087, tray and steel support LML317  
BISTRÒ dome-shaped parasols in Tamil TM15, aluminium structure LML983 | Floor covering in Opus vetro tiles MSDP018V



MIYABI armchairs woven with elastic belts in Rope yarn 120, Maglia Rasata cushions MGR068, structure in sassafras wood LE232T | MOU seat pad in Maglia Rasata MGR001 | ANEMONE side table in majolica CER905 | ENSEMBLE side table, concrete tops KLS01G4, GRGG4, MSCKG4, steel base ME021 | OMBRA parasol in Thuia TH285028, aluminium structure ME021 | NAXOS rug in Twitape yarn TP4279 | BAGS bag in Rope cord T7662



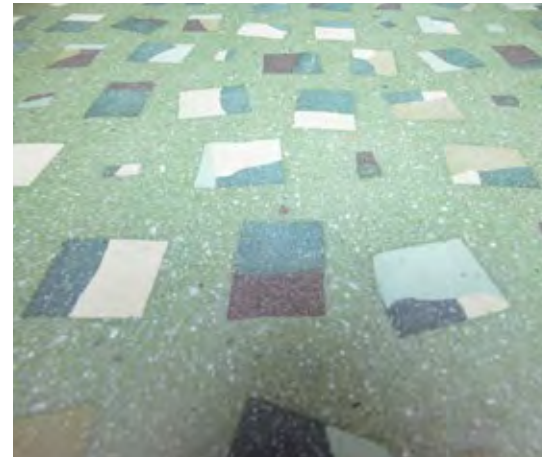
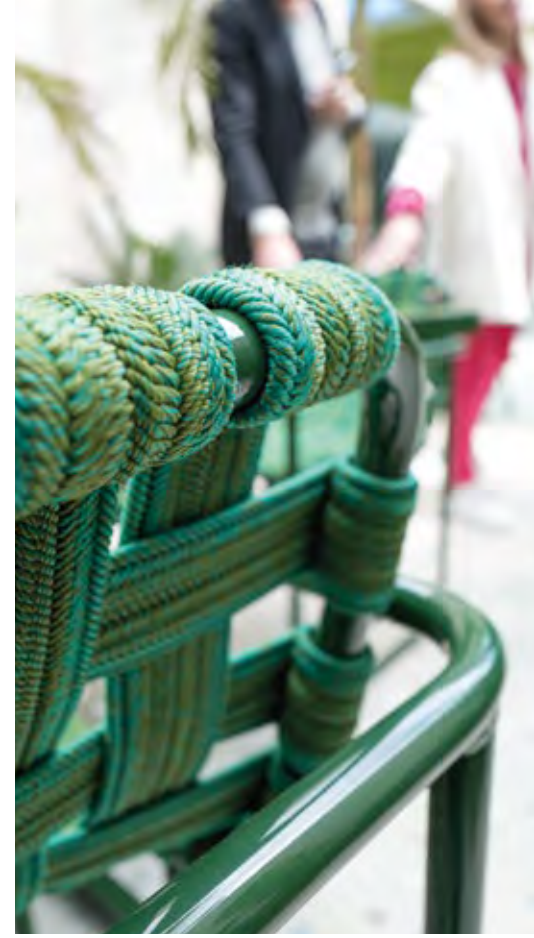
SCIARA table, lava stone and glass top PVR084, steel base LML238  
BALEARI chairs woven with Rope belts 5078, aluminium structure LML238  
Floor covering in Opus ceramica tiles MSCK1217BS



FREI sofa in Aurea Optima ash wood LE232, cushions in Roseto RSTA001, Maglia Rasata cushions MGR028, MGR068, MGR266, MGR267  
ENSEMBLE side tables, tops in Aurea Optima ash wood LE232, concrete tops KLS01G4, GRG4, MSCKG4, steel base ME021  
OMBRA parasols in Thuia TH285028, aluminium structure ME021 | NAXOS rug in Twitapé yarn TP4279 | LENTA floor lamp



SCIARA table, lava stone and glass top PVR084, steel base LML238  
BALEARI chairs woven with Rope belts 5078, aluminium structure LML238  
Floor covering in Opus ceramica tiles MSCK1217BS





ENSEMBLE side tables, tops in Aurea Optima ash wood LE232, concrete tops KLS01G4 (left), GRCG4 (bottom), MSCKG4 (top), steel base ME021 | ANEMONE side table in majolica CER905 | NAXOS rug in Twitape yarn TP4279 | *Opposite page:* details of MOU seat pad in Maglia Rasata MGR001 and of Maglia Rasata cushion MGR068

## **Idee multiformi** *Multiform ideas*

L'ambiente abitativo è pensato come un contenitore in cui convivono e interagiscono oggetti dalle anime e qualità estetiche diverse. Nella scena ognuno è coprotagonista ed è il frutto di un'indagine che nasce dall'amore, dalla curiosità e dalla conoscenza della natura più profonda e meno visibile della materia. Qualità intrinseche che si rivelano nel tempo.

*The living environment is envisioned as a container where objects with diverse souls and aesthetic qualities coexist and interact. Each piece emerges as a co-protagonist, the result of an investigation driven by curiosity, love, and a deep understanding of the material's hidden aspects. These intrinsic qualities gradually reveal themselves over time.*



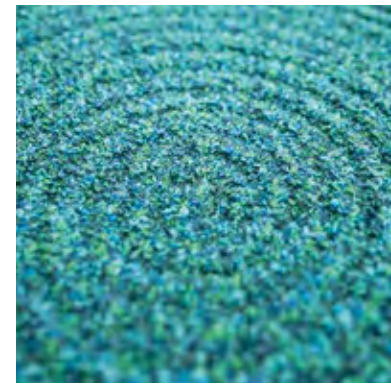
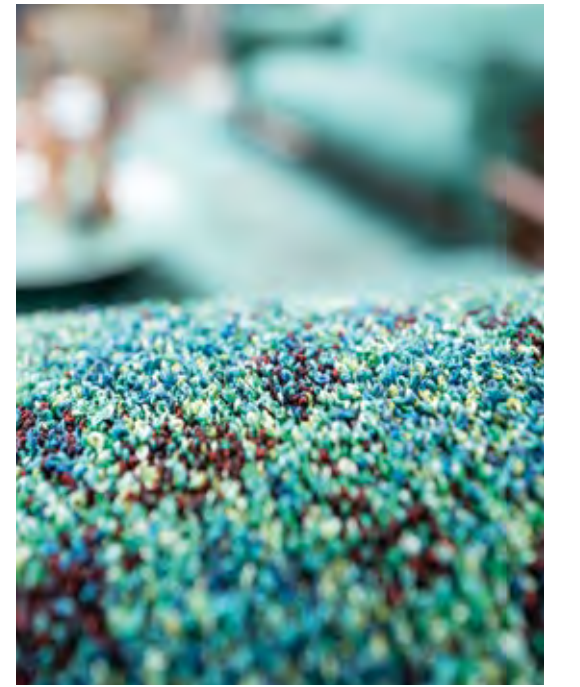
BALEARI armchair woven with Rope belts 203-15, aluminium structure LML146 | SHITO chaise longue woven with Chain Outdoor CPE15-203-203A, steel structure LML131 | STELO decorative structures in majolica



Details of SHITO chaise longue woven with Chain Outdoor CPE15-203-203A and of Maglia Rasata cushion MGR220



PLI sofa in Moss MS012, steel structure LML137 | STELO decorative structures in majolica  
Opposite page: PLI armchairs in Moss MS084, steel structure LML984 (left), Moss MS087, steel structure LML134 (right) | STELO decorative structures in majolica



Details of AIR rug in Rope cord 2383J



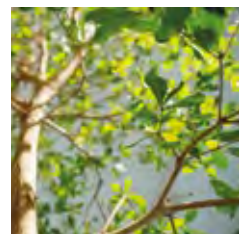
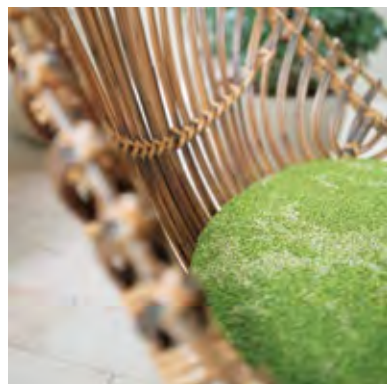
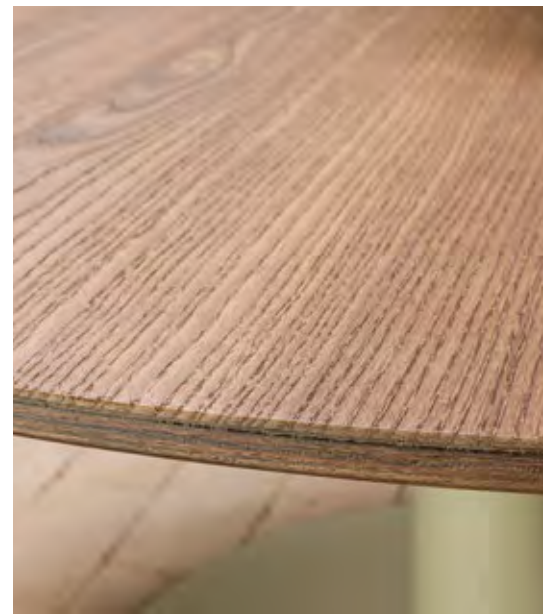
KYO armchairs and sofas in Jabel JBL001, structure in sassafras wood LE232T | OTTO poufs in Moss cord CSM106B (top), CSM106A (bottom) | ISOLE side tables, Sciara top PV703, steel base ME451 | GIRO side table, top in Aurea Optima ash wood LE232, aluminium base ME021 | TAJINE side table, ceramic top CER824, steel base ME021 | AIR rug in Rope cord 2383J



SCIARA side table, lava stone and glass top MTV05 | GIRO side table, top in Aurea Optima ash wood LE232 | SAMO rug in Samo cord SAR236



ISOLE side tables, Sciara top PV703 | TAJINE side tables, ceramic top CER824 | GIRO side table, top in Aurea Optima ash wood LE232 | AIR rug in Rope cord 2383J



GIRO table, top in Aurea Optima ash wood LE232, steel base ME138 | SABRINA chairs in Roseto RSTA002, legs in sassafra wood LE132T



DOCK table, natural lava stone Glacé top LVG01, steel base LML947 | MAE chairs in Brio BT203-50-28, steel structure LML947



DOCK table, natural lava stone Glacé top LVG01, steel base LML947 | MAE chairs in Brio BT203-50-28, steel structure LML947



Details of SABI sofa woven with Moss cord CMS027B



SABI sofa woven with Moss cord CMS027B, cushions in Moss MS026, MS032, Maglia Rasata cushions MGR229, MGR292, MGR293, base in sassafras wood LE220  
SMILE armchair in Aero AR2805 | SCIARA side table, lava stone and glass top MTV05 | GIRO side table, top in Aurea Optima ash wood LE232, aluminium base ME021  
| PLUMP pad woven with Chain Outdoor CPE311328A, CPE503128A, CPE503128B, CPE625017A | SAMO rug in Samo cord SAR236



Detail of SMILE armchair in Aero AR2805

**Un'atmosfera lieve** *A light atmosphere*

L'idea di un'architettura organica, della quale spazi esterni e interni sono parte integrante, definisce luoghi in cui la relazione tra luce, colore e organismi vegetali infonde bellezza e coerenza a un insieme dove sfuma ineffabilmente la percezione tra il dentro e il fuori e dove natura e spazio edificato si intersecano fino a fondersi.

*The concept of organic architecture, which integrates exterior and interior spaces, defines environments where light, colour, plant life, and materials harmonize to create beauty and coherence. In such spaces, the boundary between inside and outside subtly dissolves, as natural and artificial elements seamlessly interact and blend.*





BALEARI chaise longue woven with Rope belts 2803, aluminium structure LML136  
 ANEMONE side table in majolica CER902



KABÀ sofa in Moss MS012, Maglia Rasata cushions MGR254, MGR268, steel structure LML114 | BALEARI armchair woven with Rope belts 0328, aluminium structure LML136 | OTTO pouf in Rope cord T0537 | ELIO side table, top in elm Abonos™ LE233, steel base ME021 | STRAP side table, Esmal top ESM062, aluminium base ME021 | SAMO rug in Samo cord SAR235



TELAR lounge chairs woven with Rope braids 4605, steel structure LML137 | GIRO table, top in Seres CON20BS, aluminium base LML137 | BISTRÒ flat parasol in Madras MD01, aluminium structure ME002



BALEARI armchairs woven with Rope braids 4005, aluminium structure LML405 | OTTO pouf in Rope cord T4008  
MARNA side table in Opus Ceramica MSCK0429 | PARALLELO rug in Moss cord CMS040B



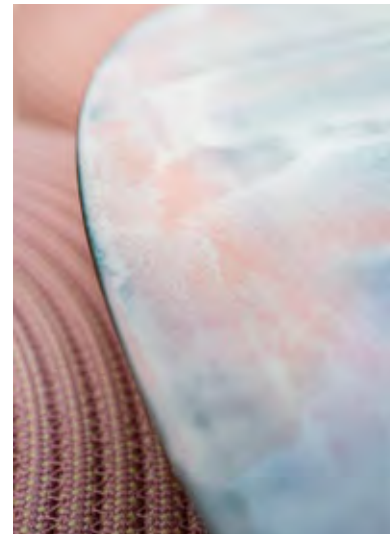
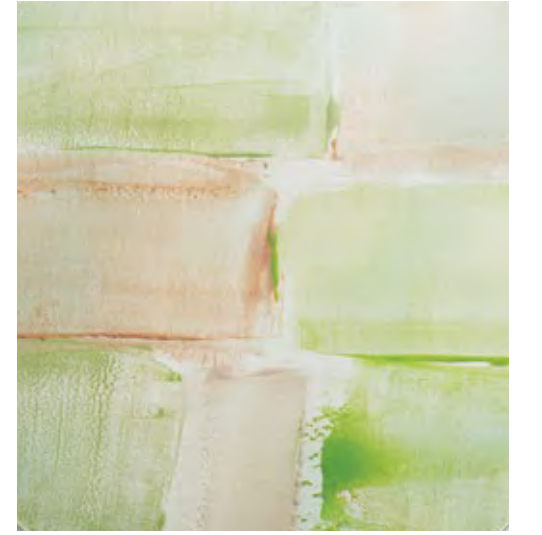
Detail of SCIARA side table lava stone and glass top PV104



POD bench in Maglia Rasata PTD012, ORLANDO backrests in Rope T mélange RTM40, Maglia Rasata cushion MGR252 | BALEARI armchairs woven with Rope belts 2823, aluminium structure LML136 | OTTO poufs in Rope cord T3505 (left), T0529 (left) | CALATINI ceramic side tables CE663 | RAY rug in Rope braid R288828 ECHO rug in Rope cord EHR667 | SIKA basket in Rope cord MTT20



FILO sofas in Twigg yarn TFL015, cushion in Rope T mélange RTM40, Maglia Rasata cushions MGR254, MGR257, MGR263, MGR270, steel structure LML136  
OTTO poufs in Rope cord T0537 (left), T0503 (right) | TAJINE side tables, ceramic top CER648, steel base ME021 | ELIO side table, top in elm Abonos™ LE233, steel  
base ME021 | STRAP side table, Esmal top ESM062, aluminium base ME021 | ZOE rug in Rope cord T5439





NOAH sofa in Rope T mélange RTM47, Maglia Rasata cushions MGR259, MGR278, MGR279, MGR280 OTTO poufs in Rope cord T5440 | STRAP side table, Esmal top ESM063, aluminium base ME021



OTTO poufs in Rope cord T4208 (left), T9190 (middle), T5440 (right)  
STRAP side tables, Esmal top ESM063 (left, middle), ESM065 (right), aluminium base ME021

## Designers

### Bestetti Associati

Ombra, Sospesa

### Gabriele & Oscar Buratti

Mae

### Campana

Metamorfosi collection:

Bruco, Chromodoro, Zoide

### Victor Carrasco

Orbitry, Strap

### Claesson Koivisto Rune, Bestetti Associati

Orlando

### CRS

Air, Bistrò, Echo, Elio, Ghirigoro, Giorgio, Jali,

Jardín, Lucerna, Marna, Mou, Otto, Naxos,

Net 10, Noah, Parallelo, Plump, Pod,

Ray, Samo, Shell, Sika, Tweed, Zebrù, Zoe

### Marella Ferrera

Bouquet, Isole, Sciara

### Davide Groppi, Bestetti Associati

Lenta

### Bertrand Lejoly

Pli

### Marco Merendi

Calatini

### Metrica by Bruno Fattorini, Robin Rizzini

Resort

### Nicolò Morales

Anemone, Cerchi, Helico, Primula, Stelo,

ceramics and colours for Calatini, Luce tops for Giro

### Elia Nedkov

Kabà

### Nendo

Hana-arashi collection

### Lina Obregón

Baleari, Telar

### Ramos-Bassols, Nicolò Morales

Tajine

### Robin Rizzini

Altopiano

### Francesco Rota

Abri, Agío, All-Time, Concreto, Dock,

Elon, Elsie, Euclide, Filo, Flip, Float on,

Frame, Frei, Giro, Intermezzo, Kanji,

Kiori, Kyo, Lever, Linea, Miyabi, Move,

Oasi, Sabi, Santorini, Shibusa, Shito,

Silent, Smile, Tapio, Vespucci, Welcome

### Studio Stefan Scholten

Ensemble

### Vincent Van Duysen

Portofino

### Gabriella Zecca

Nomade

### Espen Øino

Capri, Elianto, Sabrina

## Collections

### Seating

**Agio** 30  
**All-Time** 54  
**Elianto** 144, 151  
**Filo** 198  
**Frei** 156, 157  
**Kabà** 193  
**Kiori** 144  
**Kyo** 172, 174  
**Move** 12, 16, 17  
**Noah** 203  
**Oasi** 102, 104  
**Pli** 171  
**Pod** 197  
**Santorini** 126, 132, 135  
**Sabi** 185, 186  
**Vespucci** 108, 109, 111  
**Welcome** 102, 105

### Armchairs and lounge chairs

**Baleari** 167, 193, 195, 197  
**Float on** 126, 130, 135  
**Jardín** 120  
**Kiori** 144  
**Miyabi** 153  
**Orbitry** 124  
**Pli** 170  
**Pod** 109, 110  
**Shibusa** 54  
**Shito** 167, 169  
**Smile** 186, 187  
**Tapio** 17  
**Telar** 194

### Chaise longues and sun beds

**Baleari** 192  
**Linea** 52, 53,  
**Chairs and stools**  
**Baleari** 154, 158, 159  
**Capri** 138, 139, 140  
**Elsie** 27  
**Mae** 181, 182  
**Portofino** 115, 116, 117  
**Sabrina** 178

### Tables

**Altopiano** 138, 139, 140, 141  
**Concreto** 115, 116, 117  
**Dock** 181, 182  
**Elon** 26, 27  
**Giro** 178  
**Sciara** 154, 158, 159

### Side tables and consoles

**Anemone** 106, 144, 149, 153, 163, 192  
**Bouquet** 102, 105  
**Calatini** 197  
**Cerchi** 120  
**Elio** 102, 126, 132, 193, 198  
**Ensemble** 153, 157, 163, 174  
**Flip** 34, 38  
**Frame** 102, 105  
**Giorgio** 45, 51  
**Giro** 102, 104, 105, 174, 176, 177, 186, 194  
**Helico** 124, 135, 136, 137  
**Isole** 126, 132, 135, 144, 149, 174, 177  
**Kanji** 12, 17, 20  
**Lever** 12, 17, 20  
**Marna** 195  
**Primula** 144, 149  
**Sciara** 108, 109, 110, 176, 186, 196  
**Strap** 53, 54, 60, 102, 104, 106, 108, 109, 126, 132, 135, 144, 193, 198, 203, 205  
**Tajine** 125, 174, 177, 198

### Complements

**Concreto** 98, 99  
**Ghirigoro** 12, 15, 17, 18, 19, 20, 21  
**Mou** 153, 162  
**Otto** 174, 193, 195, 197, 198, 203, 205  
**Plump** 186  
**Shell** 126, 132, 135  
**Stelo** 167, 168, 170, 171  
**Zebrù** 54, 58, 59

### Accessories

**Bags** 106, 153  
**Lenta** 102, 126, 135, 157  
**Lucerna** 115, 116  
**Orlando** 197  
**Sika** 197

### Screens

**Abri** 114, 120, 122

### Cabinets and bookshelves

**Euclide** 22, 23  
**Intermezzo** 37, 38  
**Resort** 45, 46, 49  
**Sospesa** 32

### Beds

**Silent** 34, 36, 38

### Rugs

**Air** 172, 174, 177  
**Echo** 197  
**Jali** 102, 104, 105, 106  
**Naxos** 153, 157, 163  
**Net 10** 108, 109  
**Nomade** 10, 11  
**Parallelo** 12, 17, 20, 144, 149, 195  
**Ray** 197  
**Samo** 176, 186, 193  
**Tweed** 54  
**Zoe** 30, 33, 34, 38, 126, 132, 135, 137, 198

### Shading structures

**Resort** 108, 111, 115, 116

### Parasols

**Bistrò** 102, 105, 126, 132, 138, 139, 140, 144, 151, 194  
**Ombra** 153, 157

## Mottainai

### Hana-arashi collection

**armchair** 66, 74, 76  
**baskets** 64, 66, 74  
**floor lamps** 72, 74  
**poufs** 66, 68, 73, 74  
**suspension lamps** 66, 68, 74

### Metamorfosi collection

**Bruco** 78, 80, 81, 82, 84, 86, 88, 90, 91, 92, 102, 106  
**Chromodoro** 78, 86, 88, 89  
**Zoide** 78, 82, 83, 86, 91

Thanks to

**Apalazzogallery**

**Compasso Design Gallery**

**Domani**

**Golran 1898**

**Listone Giordano**

**Ottagono - Green Architecture Division of AD Dal Pozzo**

**Senini**

**Vannucci Piante**

Artworks

**Lucia Pescador**

courtesy Apalazzogallery

Paola Lenti srl si riserva il diritto di apportare modifiche di qualsiasi genere ai prodotti pubblicati, a proprio esclusivo e insindacabile giudizio e senza necessità di comunicazione preventiva.

*Paola Lenti srl reserve the right to make changes of any kind to the products published herein, at its sole and unquestionable judgment and without the need for prior communication.*

Cover, live and details photographs by

**Maurizio Natta**

Set and still-life photographs by

**Sergio Chimenti**

Styling by

**Cristina Nava Studio**

Post production

**Relight**

© Paola Lenti srl

Paola Lenti srl  
Via Po 100 A  
20821 Meda MB Italia  
ph. +39 0362 344587  
fx. +39 0362 71204  
paolalenti.it



Printed in September 2024



