

Fin-
ishes

Outdoor



adatto per uso esterno
suitable for outdoor use

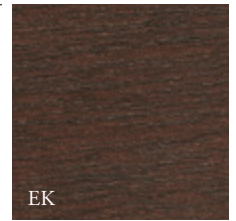


adatto per uso esterno in ambiente salino
suitable for outdoor use in salty environments



articolo ignifugo
flame retardant

MOGANO
MAHOGANY



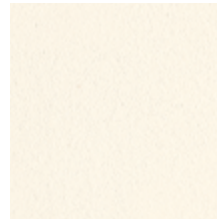
EK
Tinto Noce
Walnut Stained

IROKO
IROKO

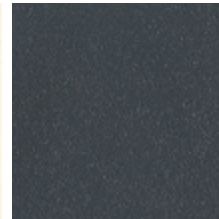


EU
Iroko

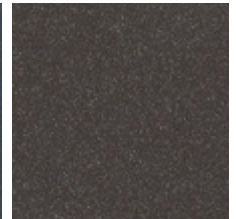
METALLI VERNICIATI
LACQUERED METALS



Bianco Goffrato
White Embossed

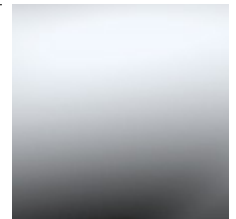


Antracite Goffrato
Anthracite Embossed



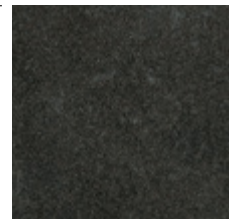
Aval Goffrato
Aval Embossed

INOX
INOX



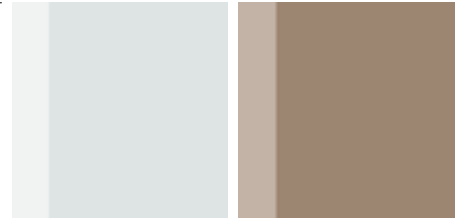
Lucido AISI 316
AISI 316 Polish

GRÈS PORCELLANATO
LAMINATED PORCELAIN



Ossido Nero
Black Ossido

VETRO TEMPERATO
TEMPERED GLASS



Float Trasparente
Transparent Float

Bronzato
Bronzed

CERAMICA
CERAMIC



Grigio Sabbia
Sand Grey

Pesca
Peach

HPL
HPL



Bianco
White

Antracite
Anthracite

Orchidea
Orchid

CORDINI
ROPES



K1
Sintetico Moka
Moka Syntetic

CORDINI PVC
PVC ROPES



J7
Bianco
White

G2
Antracite
Anthracite

G1
Havana
Havana

CORDINI GASSA
GASSA ROPES



B1A
Beige
Beige

F7E
Testa di Moro
Dark Brown

CORDA NAUTICA
NAUTICAL ROPE



F9B
Canapa
Hemp

D4B
Antracite
Anthracite

D5B
Blue Navy
Blue Navy

FETTUCCIA NAUTICA
NAUTICAL RIBBON



F9
Canapa
Hemp

D4
Antracite
Anthracite

D5
Blue Navy
Blue Navy

FETTUCCIA FLY
FLY RIBBON



S4E
Fettuccia Fly Grigio
Grey Fly Ribbon

SHELL - Cat.1 (Outdoor) **NEW**



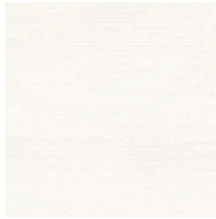
100% Solution Dyed Outdoor Acrylic
 MARTINDALE - 30.000 cicli/rubs

Fire tests

CAL TB 117:2013
 NFPA 260

Note \ Notes

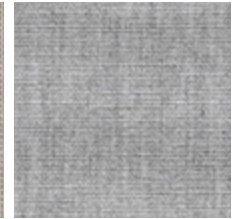
Standard 100 by OEKO-TEX®
 Greenguard Gold Certification
 Breathable comfort
 Mold / mildew resistant
 Water & stain resistant
 Sun protection
 UV / Fade resistant



E1A
 Bianco



E1R
 Sabbia



E2A
 Grigio



E2B
 Antracite



E1L
 Grigio celeste



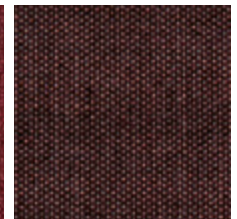
E1G
 Celeste



E1Q
 Righe



E2C
 Mattone



E2D
 Tronco



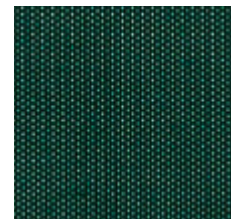
E2E
 Prugna



E2F
 Blue Navy



E2G
 Verde muschio



E2H
 Bosco

Care



SNOW - Cat.2 (Outdoor) **NEW** ☁️ ❌

100% PP
MARTINDALE - 60.000 cicli/rubs

Fire tests
CAL TB 117:2013
EN 1021-1

Note \ Notes
100% recyclable
100% non toxic (EU and USA standard)
Anti-allergic
Resistant to fungus, bacteria, sunlight, humidity, chlorine, food stains and sweat
Compatible with delicate baby skin
Thermoregulating and traspiring

Care 



B3A Bianco melange
B3B Sabbia melange
B3C Tronco melange

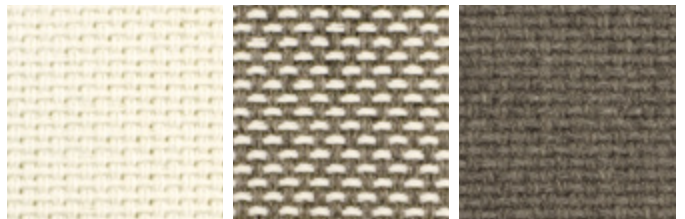


B3D Antracite
B3E Grigio melange
B3F Blu oltremare

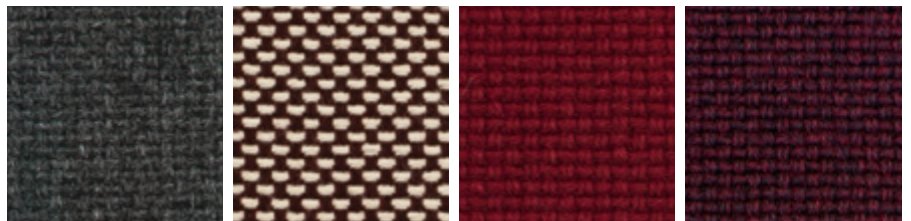
SKIPPER - Cat.3 (Outdoor) **NEW** ☁️

100% Solution Dyed Outdoor Acrylic
MARTINDALE - 20.000 cicli/rubs

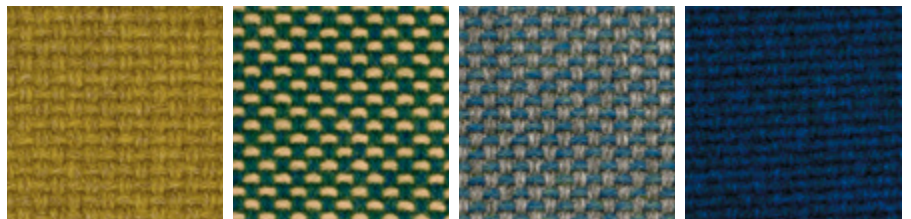
Note \ Notes
Stain repellent
Anti-mould
Teflon treatment



B4A Panna
B4B Panna grigio
B4C Grigio





B4D Antracite
B4E Ribes
B4F Rubino
B4G Prugna



B4H Senape
B4I Verde
B4J Grigio celeste
B4K Blue navy

Care 

STAR - Cat.3 (Outdoor) **NEW**  

99% Solution Dyed Outdoor Acrylic, 1%PL
 MARTINDALE - 30.000 cicli/rubs

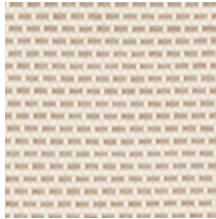
Fire tests

CAL TB 117:2013
 NFPA 260

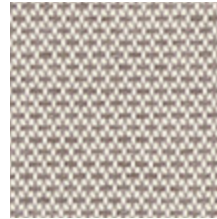
Note \ Notes

Standard 100 by OEKO-TEX®
 Greenguard Gold Certification
 Breathable comfort
 Mold / mildew resistant
 Water & stain resistant
 Sun protection
 UV / Fade resistant

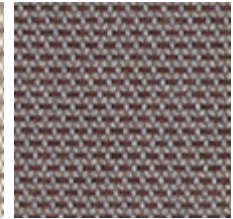
Care



B4Q
Sabbia



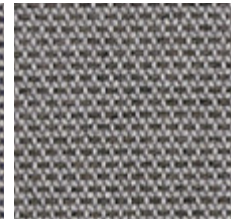
B4R
Grigio



B4V
Tronco



B4T
Blu oltremare



B4U
Antracite

SARDINIA - Cat.4 (Outdoor) **NEW**



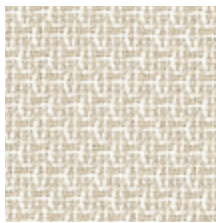
100% PL Flame retardant
 MARTINDALE - 60.000 cicli/rubs

Fire tests

M1 NFP902-503-504-505
 IMO 8 UPHOLSTERY
 B1 DIN 4102-1
 BS 5852 CIGARETTE
 BS 5852 MATCH
 BS7176
 CAL TB 117:2013

Note \ Notes

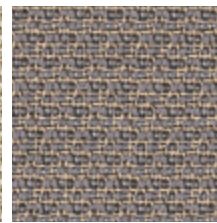
Standard 100 by OEKO-TEX®
 Greenguard Gold Certification



B5A
Panna



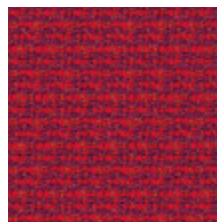
B5B
Sabbia



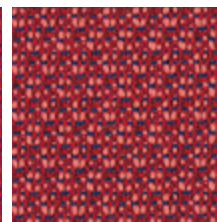
B5D
Grigio



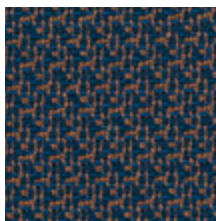
B5C
Madreperla



B5K
Rosso imperiale



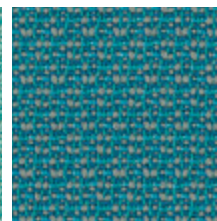
B5J
Lampone



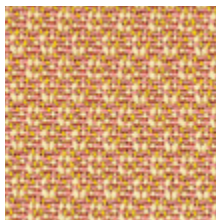
B5L
Blue Navy



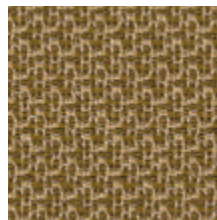
B5G
Verde acqua



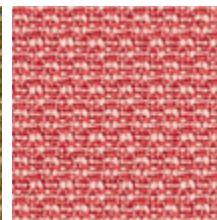
B5H
Petrolio



B5F
Giallo





B5E
Cachi



B5I
Rosa

Care



SOUL - Cat.4 (Outdoor)  

100% Polyolefinic FR
MARTINDALE - 50.000 cicli/rubs

Fire tests

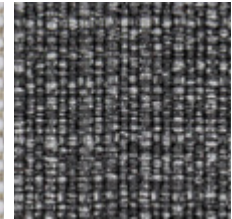
UNI 8456 - 9174 - Class 1
EN 1021-1/2
CAL TB 117:2013
B1 DIN 4102, Part 1
NFPA 260:2013 - Class 1
IMO 2010 FTP CODE Part 8
EN 13773 (2004) Class 1
DIN EN 1021 Teil 1+2
BS 5852 Crib 5
IMO Res. A652 (16)



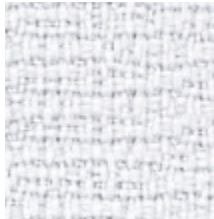
ZT
Nocciola



ZU
Panna



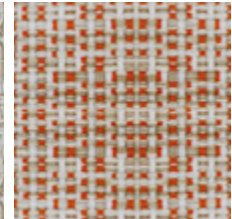
ZW
Nero



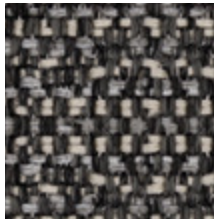
ZX
Bianco



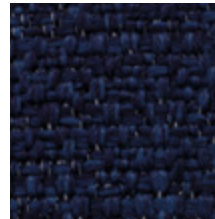
ZY
Beige



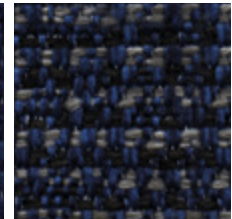
ZK
Arancio



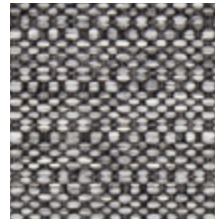
T1M
Nero Melange



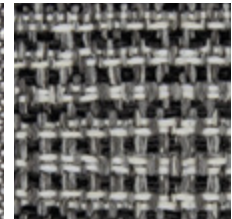
T1N
Blu



T1Q
Blu Melange





ZV
Grigio



T1P
Grigio Melange

Care



SUNSET - Cat.4 (Outdoor)  

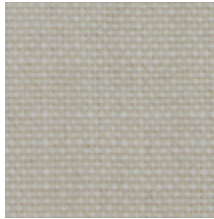
100% Solution Dyed Outdoor Acrylic
MARTINDALE - 50.000 cicli/rubs

Fire tests

CAL TB 117:2013

Note \ Notes

- Breathable
- Water repellent
- Mould resistant
- Stain resistant



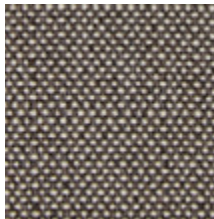
T1A
Panna



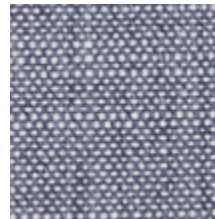
T1B
Beige chiaro



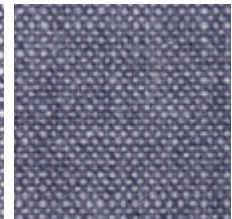
T1C
Beige



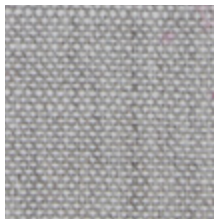
T1D
Tronco



T1E
Light blu



T1F
Blu



T1G
Grigio



T1H
Grigio chiaro



T1I
Nocciola



T1J
Grigio scuro



T1K
Antracite



T1L
Cielo

