

*Lorenza Bozzoli*  
COUTURE

*Milano*







MARISCAL



# *Lorenza* **Bozzoli**

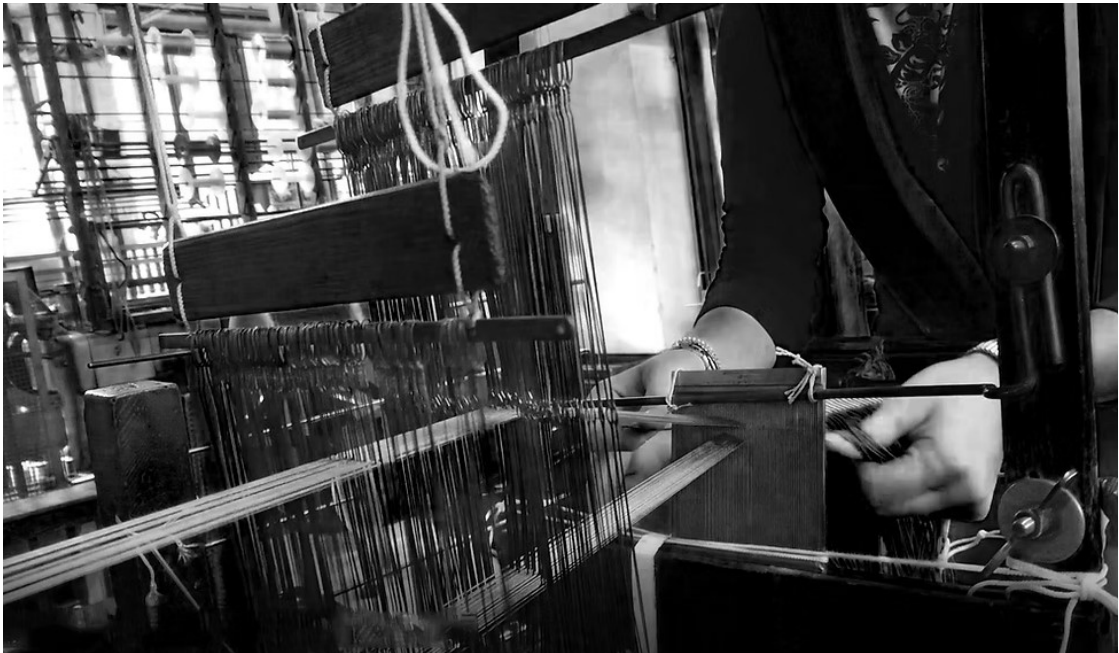
Lorenza Bozzoli was born in Milan. She attended the Academy of Brera, and moved to New York to kick-off her career in the fashion field with her first self-produced lines. Upon returning to Milan she soon started working with Elio Fiorucci and companies like Basile, Camper, Sergio Rossi, Plein Sud.

Her interest then moved toward the world of interior design, and she started articulating her work through a vast series of collaborations with big brands such as Alessi, Moooi, Dedon, Pomellato, Dilmos, Edition, Mingardo, Slamp, Slide, Tato Italia, Colè, LondonArt, Natuzzi, Fratelli Boffi, Ghidini1961.

Lorenza currently lives and works in Milan.

A handwritten signature in black ink, appearing to read 'Lorenza Bozzoli', is centered on the page. The signature is fluid and cursive, with the first name 'Lorenza' written in a larger, more prominent script than the last name 'Bozzoli'.

**C**outure is a high-end, elegant and luxury home accessory collection by designer Lorenza Bozzoli. With the philosophy of making with artisanal craftsmanship, this collection is designed and made in Italy. Couture is a combination of design and fashion with high quality materials and innumerable color combinations personalized to the user needs.



**T**his unique Haute-Couture product features the colorful fringes woven by artisans on 18th Century loom. Each thread is stitched and cut by hand by designers and artisans making it a perfect example of the fusion of bespoke craft and design piece.





Each bespoke piece is stamped at the bottom on the lining of the pouf, signed, numbered and dated personally by the designer Lorenza Bozzoli.

The original authenticity of each product highlights the artisanal quality and the art of a luxury dedicated design.

*The*  
**PIROUETTE**  
*Sofá*  
*The Curve of Elegance*

**T**he Pirouette sofa evolves from the iconic shapes of the renowned Pirouette armchair, reinterpreted as a piece designed for conversation and conviviality. It retains the elegance of the armchair's embracing lines and bold volumes, enhancing a strong presence and exceptional comfort. The seat, transformed into a refined bean-shaped form, breaks away from traditional linearity, making the sofa ideal to bring an original and sophisticated twist to any living space, creating a welcoming environment full of character.

A design masterpiece that skillfully combines aesthetics and functionality, capable of elevating any setting with charm and personality.

On the right page:  
Pirouette *Sofá* with *Elitis* Fabric and *Lurex* fringes  
*Gleaming Tribe* Pouf in size 50 0

Two *Icones Lamps* designed by Lorenza Bozzoli for the brand *Tato Italia*



PROUD SOUTH







The new bean-shaped Pirouette sofa to enhance the circular harmony of togetherness.

This possibility of creating fringes by blending the colors of the selected fabric extends to all fabrics in the collection, as well as upon request to fabrics supplied by the client.

A sartorial detail that makes each piece unique and perfectly coordinated with any interior design project.



On the right page:  
A closeup of the *Lurex* fringes.



***RAFFIA*** *Vibes* —  
Design goes  
*Natural*

**B**eneath the artisanal weave lies a soft foam core. Poufs and benches designed for interiors or covered patios, where design engages in dialogue with nature.

This is a beautiful balance between natural material and contemporary comfort: woven raffia as a mark of craftsmanship, and the padded structure as a guarantee of warmth and functionality. The fringes, also made of raffia, move freely, creating a rhythm and harmony that bring each piece to life.

This collection offers a unique sensory experience that will make you forget whether you're in the comfort of your home or on a tropical island, elegantly blending refined design with the warm, natural essence of the material.

On the right page:  
*RAFFIA collection* Poufs









The colors used in the weave can also be reflected in the fringes, creating a harmonious and customizable composition.

On this page:  
*RAFFIA collection* Poufs in size 30 0, 50 0, 95 0.







**T**he weave can be crafted with alternating colors, forming a spiral pattern that adds rhythm and visual depth to the surface, or in solid tones for a more refined, continuous look.

# *Plissé* Mood: *Geometry in Motion*

**P**lissé collection is about continuous-pattern fringes that turn the edge into an architectural statement, a new visual language between fashion, texture, and design.

Color, always a protagonist in the world of Lorenza Bozzoli, breaks the rigidity of the geometry with lively accents and bold combinations, transforming each pouf into a unique piece that combines visual strength with sensory lightness.

A continuous and harmonious pattern that evokes the movement of pleated fabric. Fringes with a sculptural character, where craftsmanship meets graphic precision.

On the right page:  
*PLISSÉ* collection Poufs









**T**he pattern is developed in three colors.

This catalogue showcases our own proposals, but in keeping with the brand's philosophy, it is possible to create custom combinations using any of the shades available in our yarn color chart used for weaving the fringes. The pattern is developed across all our shapes and sizes; both square and round.

On the right page:  
*PLISSÉ* Collection Poufs.



*Lilli:*

*The Chair  
That  
Becomes a Family*

**F**rom a single chair, an entire universe unfolds.

Lilli began as an exploration of proportion, softness, and the dialogue between geometry and decoration. Over time, that first gesture pure and sculptural has evolved into a true family of seats, each variation expressing a new attitude while preserving the same distinctive DNA.

The Lilli Chair, once a standalone icon, now extends into vanity, lounge, and asymmetrical dining versions. Each piece shares the same sense of balance, the same couture detailing the plissé textures, the refined piping, the rhythm of the fringes yet interprets them with new proportions and new functions.

Together, they form a coherent system, a constellation of shapes designed to inhabit different contexts with elegance and lightness. Lilli becomes not just a chair, but a language of comfort and sophistication, a family united by a shared spirit of grace.

On the right page:  
Lilli Vanity, *PLISSÉ* Collection.







# *The* *Lilli Vanity* Chair



**T**his variation introduces the plissé motif, which interacts beautifully with light and enhances the compact volume of the seat.

On the right page:  
Lilli Vanity, *PLISSÉ* Collection.



**T**he Lilli Chair is enriched with a new version featuring a lower backrest, designed to accompany a vanity desk or to complement more intimate settings. The result is an elegant chair with harmonious proportions ideal for both domestic interiors and hospitality spaces.







*The*  
*Lilli* LOUNGE —  
*A modular Sofá*

**T**he language of the collection expands with the Lilli Lounge, a low and wide seating module that, when combined with additional elements, transforms into a modular sofa of two, three, or more. Lilli Lounge is designed for living spaces where comfort and style meet in refined harmony. With a clean and linear design, this lounge sofa offers a welcoming and highly comfortable seat, perfect for moments of relaxation or socializing in modern and sophisticated interiors.

The straight, defined shapes are paired with the distinctive touch of fringes, which add an elegant and dynamic visual rhythm, creating a pleasant contrast with the upholstered part, supported by a cushion that accompanies the backrest and breaks the linearity, adding a soft sense of comfort.

Informal comfort meets refined chromatic research: bicolor compositions with contrasting piping, while the fringes available in solid colors, with a plissé pattern, or in any of our fringe designs introduce a dynamic yet delicate visual rhythm.

The

*Lilli* UGLY

*Asymmetric Armchair*

**T**he occasional chair Ugly redefines the traditional placement of fringes, creating a seat with a more playful character. The fringes no longer fill the base but instead suggest two legs gently supporting the upholstered part, giving the piece a refined and original aesthetic. While retaining the distinctive shapes of the Lilli series, Ugly plays with more dynamic volumes and forms, giving the chair a unique and contemporary personality without sacrificing cozy and formal seating. A perfect balance of innovation and style, for a seat that breaks the mold while remaining inviting and comfortable.

On the right page:  
Lilli *Ugly*, Occasional Chair.  
Two Noora Lanterns designed by Lorenza Bozzoli for the brand *Jwana Hamdan*







**D**ouble the Ugly, double the beauty.

Lilli Ugly pairs left and right arm versions to create a perfect balance of shape and comfort. When combined, they form a compact conversation seat playful, chic, and harmonious.

The asymmetric profile and couture detailing of the upholstery make it a piece with a strong yet versatile personality, perfect for dining rooms or convivial spaces with refined design.

On this page:  
Two Lilli *Ugly* paired together.





The

*Lilli* CHAIR —  
*Fringes* get in **Shape**

**I**n this new version, the fringe an iconic element of Lorenza Bozzoli's decorative universe cover the legs of the chair in an unexpected way: not along the entire perimeter of the square seat, but arranged in two lateral runners that leave the central part raised from the ground, suggesting the presence of the legs, giving the piece a lighter, more airy feel.

Beyond its visual appeal, this configuration also offers a functional benefit: it makes the chair particularly well-suited for dining, preventing the feet from coming into contact with the fringes while seated, and ensuring a more practical and comfortable experience.

On the right page:  
*Lilli Chair* bicolour, with piping in contrast



The

*Lilli* TRIA *Bench*

The Strength *of a Triangle*

With Tria, the visual play used to lighten the base evolves into a more defined element, where the forms draw inspiration from brutalist aesthetics reinterpreted through bold volumes and clean proportions. Sharp lines and a geometric composition create a balance between strength and lightness, giving the bench an architectural and sculptural presence.

The generous seat is completed by a low backrest, designed as a lumbar support that runs across the bench and extends slightly outward, creating a dynamic, suspended profile. This subtle gesture introduces a new idea of comfort both visual and physical somewhere between furniture and sculpture.

While preserving the couture essence of the Lilli family expressed through materials, color contrasts, and proportions the Lilli Bench offers a more architectural, linear, and contemporary interpretation, conceived for refined domestic interiors, lounges, and representational spaces.

On the right page:  
TRIA *Bench* in Bicolour









On the right page:  
BrownFUR *Pirouette* and a Riga *Pouf* in size 30 O.



# The *Gleaming & TREASURE* collection —

*Inspired by Shine and Opulence*

**T**reasure collection is the heiress of our previous Tribe Collection. It inherited its beautifully balanced, geometric and symmetrical fringe designs while moving away from its warm and exotic tones. In fact, the treasure collection adopted bold and contrasting colours that recall diamonds like emerald green, sapphire blue and deep purple. These hues are combined to softer and paler ones like light pink, blues and green to dim down the stronger accents creating class and elegance. What is never missing are those luxurious and sophisticated metallic accents, reminding of rich and luscious jewels crafted in gold, silver and bronze. The blend of these chevrons, mirrored shapes and stepped forms together with this colour scheme, gives life to a collection that seems to be coming straight out of the roaring twenties Art Deco.

On the right page: *TREASURE* bench with a size of 85cm x 40cm and a *TREASURE* square poufs of 35x35 cm.







On both pages: *TRIBE* squared pouf with a size of 35x35 cm.

Take a look at

*Lilli Chair* —  
A Touch of *Elegance*

**T**he introduction of the Treasure collection marks a pivotal expansion for Lorenza Bozzoli Couture, transitioning from a focus on exquisite furnishing accessories to incorporating substantial furniture pieces, broadening the scope and appeal of our offerings. Among the recent additions, the Lilli chair emerges as an exceptional highlight, bridging the space between the Pirouette armchair and our signature poufs. Lilli is designed to provide superior comfort with optimal lower back support across various environments. Moreover, its compact design ensures versatility, making it a perfect fit for diverse spaces.

On the right page: Lilli chair *PLAIN* version with piping in contrast that can be done in all the velvet colors.





In addition to the existing customization options for fringes, which offer an endless array of colour combinations, along with a diverse selection of fabric types and a broad palette of colours, Lorenza Bozzoli Couture collection gives you the option to personalize any item with contrasting piping. This new feature further enhances the distinctiveness of our already highly decorative pieces, adding an extra layer of sophistication and personality.

The  
***ELONGATED** Bench —*  
*Boundless Versatility*

**T**he 160 bench, akin to every item in our selection, can be custom-tailored with a choice of fabrics, fringe patterns, and a palette of colours. Its elongated and elegant form is ideally suited for positioning in an entryway or hallway, creating a striking visual when aligned against a wall opposite a lengthy dining table. The versatility of this piece is boundless, promising to infuse any space with both function and unparalleled style.

On the right page: *TRIBE* Bench 160 cm.







# The Square *collection* gets ***BIGGER***—

**T**he Treasure Collection proudly unveils its masterpiece. Measuring at a width of 95 centimetres, this design transforms from a circular to a square shape, perfectly complementing the cubic silhouette of the Lilli chair. Inspired by the iconic geometric lines characteristic of Art Deco, this square, linear ottoman becomes a pivotal element of the Treasure Collection. Its size and form make it incredibly versatile, serving not only as an extension to a linear sofa, transforming it into an L-shaped seating arrangement for added comfort.

On the right page: *TREASURE* squared pouf in size 95x95 cm.







On the left page: *TRIBE* pouf 40 Ø cm.

Every item is uniquely designed and tailored specifically for the individual client, and is authenticated with the designer's signature, stamp, and a unique number, offering you an unparalleled luxury. Couture offers a bespoke service where each creation is a reflection and interpretation of the client's personal vision. The designer collaborates intimately with the client, presenting sketches and high-quality renders, custom-tailoring shapes and colors exclusively for their item. The poufs are adorned with fringes, each meticulously hand-cut with refined precision.

On the right page: *TRIBE* bench with a length of 85 cm and depth 40 cm.











On both pages: *TRIBE* squared bench with a size of 70x35 cm.

The beloved Pirouette swivel armchair, renowned for its blend of comfort and elegance, is now reimagined in luxurious velvet. This new version not only elevates its tactile appeal but also introduces an expanded selection of sophisticated color options to harmonize effortlessly with a variety of interior styles and settings, making the Pirouette armchair an even more eclectic and stylish addition to your home, workspace or vanity desk.











On the left page: an overall of the *GLEAMING* collection



On this page: different colors of *GLEAMING* poufs 40 0 cm.







On this page: different colors of *GLEAMING* poufs 40 0 cm.

The Pirouette armchair for the gleaming collection is also completely covered in luxurious leather with a metallic gold finish, creating an enveloping brightness effect and bringing a sparkle to any environment. The sparkling leather finds perfect harmony in particular with the lurex finishes of the fringes, which add a touch of movement and elegantly conceal the base with swivel mechanism. A true jewel designed for those seeking timeless charm.







Inspired by Art Deco's motifs, the geometric pattern of fringes, whit  
its lines and colours, rethink and exhibit a timeless beauty.

On the right page: Pastel *DECO* Pouf 30 Ø cm.





The Flo pattern is inspired from the perspective view of a pure form-the cube. This gives a sense of depth to the piece with a contemporary touch.





On the left page: Blue *FLO* Bench 70cm x 35cm.



On the right page: *GEO* Pouf 50 0 cm.







On the left page: Cognac *WIEN* Pouf 50 Ø cm.

The  
*Gleaming* & **TREASURE**  
collection

*An expression of Lavishness*

**G**leaming collection shines in its own light and captures attention with its lustrous allure. The seatings of the signature fringed poufs and armchair, just like fine chocolates, have been enveloped into foil finished leather making them irresistible. The leather is a great introduction in the Couture collection as it is durable and easy to clean, making it a practical choice for our furniture pieces, while contributing to give them a modern and luxurious feel.

On the right page: *GLEAMING* Pouf 30 0 cm and Pirouette.





*GLEAMING* Pirouette swivel armchair in light gold metallic leather (front view)



*GLEAMING* Pirouette swivel armchair in light gold metallic leather (back view)

Like every piece of the gleaming collection, the bar stools also reveal themselves to be a refined meeting between light and material, these bar stools are also covered in metallic leather but what stands out even more are the fringes which find even more verticality to express their elegance . A combination that gives an aura of contemporary and sophisticated preciousness.

On the right page: *GLEAMING* Stool 30 0 cm in gold metallic leather.











On this page: *GLEAMING* pouf 40 0 cm in gold metallic leather.



On this page, from the left:  
*GLEAMING* pouf 40 0 cm, in light gold metallic leather,  
*GLEAMING* stool 30 0 cm, in silver metallic leather,  
*GLEAMING* pouf 50 0 cm, in copper metallic leather



The  
*Collective seater —*  
*160 Bench*

The 160 bench seamlessly complements the foot of any queen and king sized bed, enhancing your bedroom's aesthetic while offering additional seating for dressing or a convenient surface to place items that would otherwise clutter your bed. Equally, it finds its place within the expansive confines of a walk-in wardrobe.

On the right page:  
*TRIBE* bench with a length of 160 cm and depth 45 cm, is one of the main piece of this collection.







The 70x35 cm square bench stands out for its ability to adapt to any space. It can be placed individually or in pairs. In fact, by placing two 70 cm modules side by side it is possible to create a 140 cm bench, perfect at the end of a bed. This modular configuration offers greater freedom of customization compared to the single 160cm bench and showcasing his functionality and style





On this page: *TRIBE* squared pouf with a size of 35x35 cm.  
On the right page: *TRIBE* squared bench with a length of 70cm and depth 35 cm.



A *Delicate* **comfort** —  
*Lilli chair*

**T**he versatility of the Lilly chair is one of its most admirable traits. Its suitability for various settings—from a cozy corner chair in a bedroom, to a vanity chair that adds a touch of elegance, and even as a distinctive choice around a restaurant table—demonstrates its flexibility and potential to enhance any space. The chair's design, which balances minimalist elegance with functional comfort, makes it a compelling addition to any interior, promising to be not just a piece of furniture but a statement of style and comfort.

On the right page:  
The Lilli chair *PLAIN* version with piping in contrast that can be done in all the velvet colors.







On this page: Lilli chair *PLAIN* version (side view)



Every item is uniquely designed and tailored specifically for the individual client, and is authenticated with the designer's signature, stamp, and a unique number, offering you an unparalleled luxury. Couture offers a bespoke service where each creation is a reflection and interpretation of the client's personal vision. The designer collaborates intimately with the client, presenting sketches and high-quality renders, custom-tailoring shapes and colors exclusively for their item. The poufs are adorned with fringes, each meticulously hand-cut with refined precision.





# The *Dualism* of a pouf— 95 **SQUARE**

**T**he 95 square pouf when positioned slightly apart and topped with a tray, becomes an elegant coffee table. Here, it stands ready to display your beverages, books, or decorative items, enhancing the allure of your living space. True to our tradition, this pouf offers customization options, allowing you to select from an array of fabrics and fringe designs from our extensive archive.

On the left page: *TRIBE* squared pouf with a size of 95x95 cm.







THE LIBRARY OF THE UNIVERSITY OF TORONTO  
UNIVERSITY OF TORONTO LIBRARY

STORIES OF VETERANS  
MILITARY HISTORY  
MILITARY HISTORY



The Treasure Collection introduces a much-anticipated innovation: our charming and inviting Pirouette swivel armchair is now available in luxurious velvet, offering a wider range of color options to seamlessly blend into any setting and ambiance.

On the left page: *TRIBE* Pirouette swivel armchair in velvet.









26



60



38



F

On the left page, *CLEO* Pirouette swivel armchair in velvet.



26



29



3



F

On the right page: *CLEO* squared bench with a length of 70cm and a depth of 35 cm.







On the left page: *CLEO* pouf 40 0 cm.

The geometrical shapes of the fringes are hand-cut with finesse and utmost precision. These forms can also be customized as per the requirement of clients to suit their project.

On the right page: *CLEO* square Pouf 95x95 cm.



# The *FUR collection* — A Tactile *Pleasure*

**I**mmersing oneself in any piece from the Fur Collection offers an unavoidable experience of coziness. Crafted with meticulous attention to detail, the collection features poufs, benches, and the armchair Pirouette, each enveloped in sumptuous cachemire and coyote fur. This material, renowned for its softness, transports you to the sensation of floating on a cloud. The tactile pleasure it provides is unparalleled, inviting you to run your hands over its surface repeatedly. Moreover, these pieces are visually striking, dressed in the softest and chicest shade of powder pink, tiffany turquoise, orange, yellow and fuchsia. This color choices not only enhances the luxurious feel but also adds a sophisticated and delicate aesthetic to any space. The Fur Collection stands as a testament to luxury, promising an enchanting visual and sensory experience that is both welcoming to the touch and opulent to the eyes.











3



4



38

On the left page: cashmere *FUR* Pirouette swivel armchair.



The Pouf 40 from the Cachemire Collection distinguishes itself remarkably from other poufs in the series. Uniquely, this model eschews our trademark fringes, revealing instead its four charming, delicately fur-covered legs. This design ethos extends to the 85-centimeter bench, which proudly stands on six plush, fur-enveloped legs.

On this page: cashmere *FUR* Bench with a length of 85 cm and a depth of 40 cm  
On the right page: cashmere *FUR* pouf 40 0 cm.





*FUR* Pouf 40 0 cm,in yellow fur coyote (Detail)



*FUR* Pouf 40 Ø cm in yellow fur coyote (Top view)



On this page; coyote *FUR* Pouf 40 0 cm  
On the right page: differernt colors and shapes from the *FUR* collection.





On this page:  
cashmere *FUR* Bench with a length of 85 cm and a depth of 40 cm  
Cashmere *FUR* pouf 30 Ø cm.



*The*  
**GEO & *TRIBE***  
*collection —*  
*Inspired by*  
***Warm Landscapes***

**T**he creative and deluxe Couture family includes a Tribal collection, inspired by the warm landscapes of faraway territories. The selection of the characteristic fringed poufs and ottomans have a strong, bold and ethnic feeling to them. The collection can be described as forceful, vibrant and confident and it is defined by lots of different shades and textures. Born with this collection is the “Pirouette”, a delightful fringed swivel armchair. Luscious furniture accessories that have been thought, designed and created keeping in mind what characterizes the “Mother Continent”. Where once was sleek and shiny velvet, now there are fabrics that have a more natural, crude feeling to them. The new designs and hues of the fringes remind of warm sunsets over raw nature, deserts and rainforests, Malian mud cloths, bodily ornamentation and ceremonial masks. Sparkly details give radiance and vitality to the poufs due to the luxurious and colourful lurex fringes, allowing them to bring glow in any ambience they will be placed in. In fact, the exotic opulence of the Tribal Collection will boost with style and warmth to industrial and modern interiors, adding personality when combined to minimal, wooden or rustic decorations.

On the right page:  
*LINE* collection Bench with a length of 130 cm and a depth of 40 cm,  
*MALI* bench 85 cm.







The fabric introduced with this collection, utilized to upholster the seats are extremely graceful to the touch. Soft and soothing when it comes to the wool, rich and complex when it is about the jacquard. And, as always, a silky and delicate sensation when running hands through the smooth viscose fringes.







The Tribal Collection deeply express the soul of faraway lands ethnicity trough the beautiful reddish and brown shades, chalky blues, tones that suggests of cayenne pepper, terracotta and clay. Everything from colors to textures brings to mind images of African Nature.

On the right page: *ETNO* pouf in sizes 50 0 cm and 35x35 cm.







On the left page: different colors and shapes of the *TRIBE* collection poufs and benches.



On the right page: a series of *ELI* poufs in sizes 30 0 cm, 40 0 cm, 50 0 cm and 35x35cm..



*The*  
**RIGA** *collection* —  
*A touch of* **Personality**

**T**he exquisite RIGA collection:  
fringed poufs with colored symmetrical stripes and a contrasting velvet seating. These charming and stylish pieces are designed to instantly elevate the aesthetics of any room, infusing it with a vibrant pop of color and a touch of personality while maintaining a sense of elegance and sophistication in any living space.

On the right page: a series of *RIGA* poufs in sizes 50 0 cm, 30 0 cm and a 85 cm length bench.







On this page: Overall of the *RIGA* collection.

The colored vertical stripes are vibrant and captivating, adding a splash of personality to your décor. Any room, from the most minimalistic to the extremely ornated, are perfectly complemented by the poufs in shades of stunning hues to choose from, including bold reds, serene blues, and earthy greens. These poufs effortlessly infuse your space with a pop of color and liveliness.

On the right page: a series of *RIGA* poufs in zizes 50 0 cm, 30 0 cm and a 85 cm lenght bench.



The Riga collection embodies a perfect combination of craftsmanship and chromatic creativity, transforming this 130 cm bench into a unique piece of great visual impact.

Made by alternating two colors, the striped pattern maximizes the horizontality of the benches' design and highlights the decorative potential of this pattern enriching any environment with a note of personality and style.

On the right page: *RIGA Bench* in size 130cm x 40cm.







On the left page: different examples of the possible combinations of fringes matched with the top's velvet.

# Fabrics — *Daytona velvet*



*RAL* 9003  
001



*PANTONE* 7528C  
004



*RAL* 1015  
002



*PANTONE* 408C  
033



*PANTONE* 4745C  
003



*PANTONE* 4725C  
404



*PANTONE* 7518C  
006



*PANTONE* 440C  
061



*PANTONE* 7540C  
025



*PANTONE* 4U  
028



*PANTONE* 6U  
026



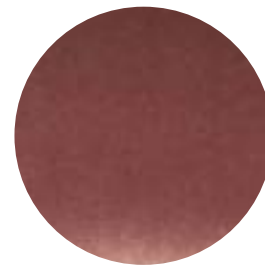
*PANTONE* 476U  
406



*PANTONE* 10U  
054



*PANTONE* 500C  
904



*PANTONE* 697C  
033



*PANTONE* 5035C  
070



*PANTONE* 7528U  
050



*PANTONE* 1895C  
094



*PANTONE* 5225C  
029



*PANTONE* 7522C  
031



*PANTONE* 553C  
102



*PANTONE* 560C  
807



*PANTONE* 422C  
085



*PANTONE* 478C  
007



*PANTONE* 1525C  
009



*PANTONE* 201C  
300



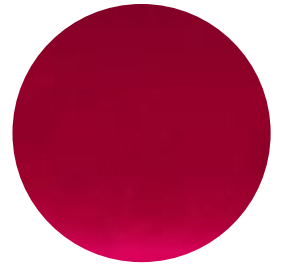
*PANTONE* 7509C  
008



*PANTONE* 159C  
092



*PANTONE* 1788C  
086



*PANTONE* 200C  
011



*PANTONE* 1955C  
093



*PANTONE* 696C  
014



*PANTONE* 676C  
013



*PANTONE* 7421C  
027



*PANTONE* 235C  
902



*PANTONE* 5125C  
900



*PANTONE* 261C  
901



*PANTONE* 667C  
016



*PANTONE* 617C  
017

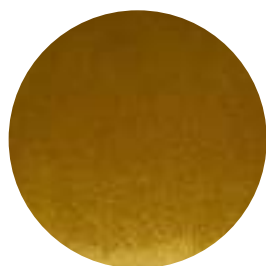


*PANTONE* 103C  
808

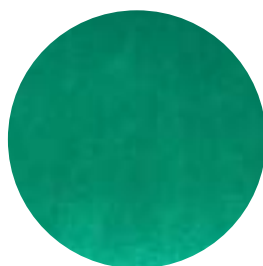
# Fabrics — *Daytona velvet*



*PANTONE* 4515C  
001



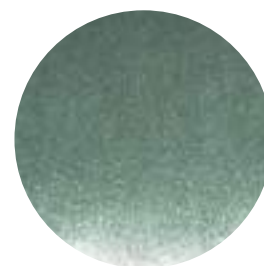
*PANTONE* 1245C  
501



*PANTONE* 7473C  
019



*PANTONE* 5432C  
082



*PANTONE* 5415C  
700



*PANTONE* 7541C  
087



*PANTONE* 289C  
024



*PANTONE* 540C  
062



*PANTONE* 549C  
032



# Fabrics — *Roxana velvet*



*PANTONE* 7499C  
02



*RAL* 105  
03



*PANTONE* 407C  
33



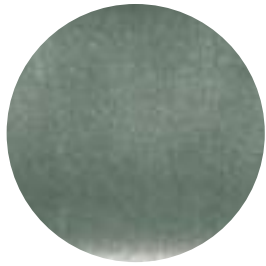
*PANTONE* 4745C  
1720



*PANTONE* 479C  
1715



*PANTONE* 7531C  
1709



*PANTONE* 5497C  
1726



*PANTONE* 434C  
35



*RAL* 3005  
10



*PANTONE* 5205C  
07



*PANTONE* 667C  
1716



*PANTONE* 7419C  
1717



*PANTONE* 207C  
1000



*PANTONE* 262C  
09



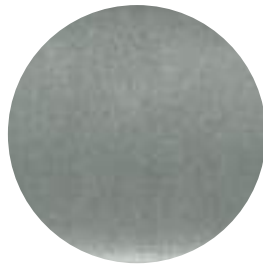
*PANTONE* 167C  
30



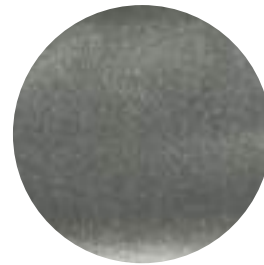
*PANTONE* 125C  
1004



*PANTONE* 427C  
18



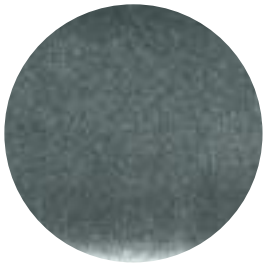
*PANTONE* 7C  
19



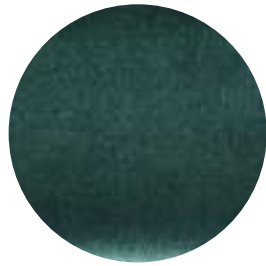
*PANTONE* 423C  
17



*PANTONE* 445C  
11



*PANTONE 754C*  
111



*PANTONE 7476C*  
16



*PANTONE 540C*  
1001



*PANTONE 5275C*  
1722



*RAL 9005*  
12

# Fabrics — *Vega velvet*



*RAL 300 90 05*  
101



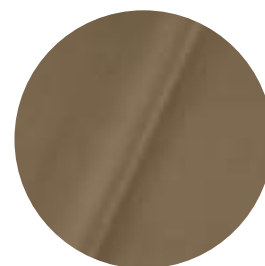
*RAL 60 90 05*  
151



*RAL 60 90 10*  
102



*PANTONE 4745U*  
104



*PANTONE 7530C*  
103



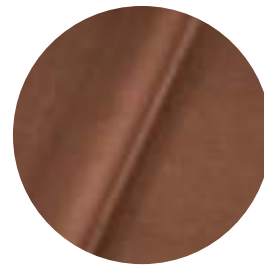
*PANTONE 409C*  
132



*RAL 060 30 27*  
107



*PANTONE 7516C*  
140



*RAL 030 40 20*  
142



*RAL 020 50 40*  
143



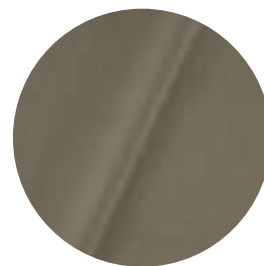
*PANTONE 7434C*  
141



*PANTONE 7428C*  
139



*RAL 300 30 10*  
134



*PANTONE 500C*  
904



*PANTONE 697C*  
053



*RAL 040 90 10*  
152



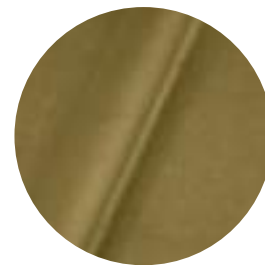
*PANTONE 4735U*  
145



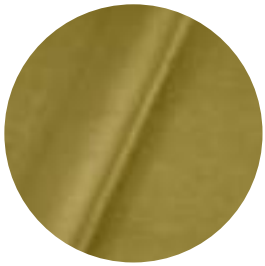
*PANTONE 7509C*  
302



*PANTONE 463U*  
559



*PANTONE 465U*  
127



*PANTONE* 104U  
113



*PANTONE* 397C  
130



*PANTONE* 134C  
111



*PANTONE* 124U  
105



*PANTONE* 157C  
106



*PANTONE* 167C  
131



*PANTONE* 180C  
108



*PANTONE* 192C  
109



*PANTONE* 187C  
116



*PANTONE* Red U  
110



*PANTONE* 228U  
118



*PANTONE* 5773C  
569



*PANTONE* 406C  
124



*PANTONE* 441C  
147



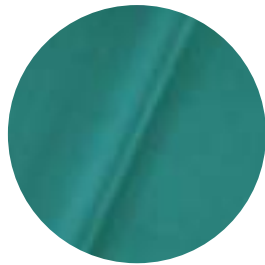
*PANTONE* 416C  
301



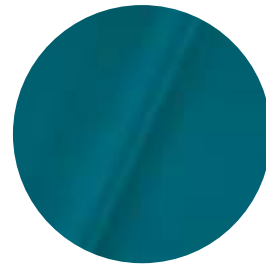
*PANTONE* 546C  
167



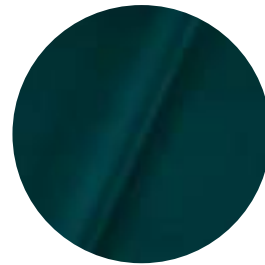
*PANTONE* 575C  
590



*PANTONE* 667C  
115

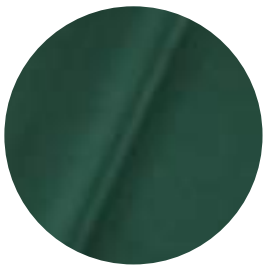


*PANTONE* 639U  
114

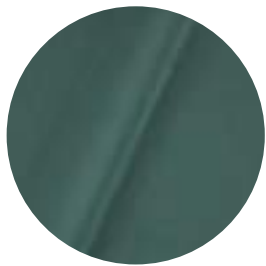


*PANTONE* 3025U  
138

# Fabrics — *Vega velvet*



*PANTONE* 5473C  
125



*PANTONE* 5425C  
126



*PANTONE* 5445C  
148



*RAL* 300 80 10  
561



*RAL* 290 30 25  
112



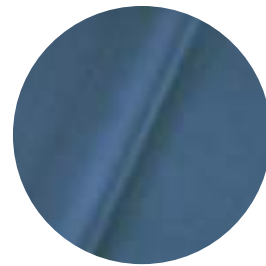
*PANTONE* 2617C  
117



*RAL* 330 20 25  
121



*RAL* 260 20 20  
137



*RAL* 260 50 30  
122



*PANTONE* 4745U  
128



*PANTONE* 8U  
300



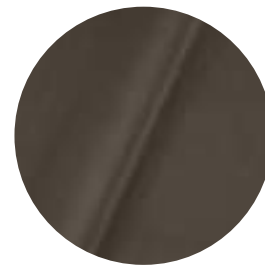
*PANTONE* 664C  
144



*PANTONE* 663C  
146



*PANTONE* 409C  
150



*RAL* 340 30 05  
553



*PANTONE* 532C  
119



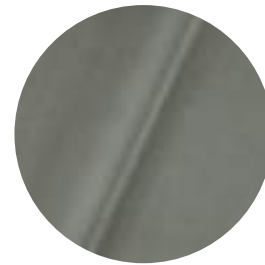
*RAL* 020 20 05  
136



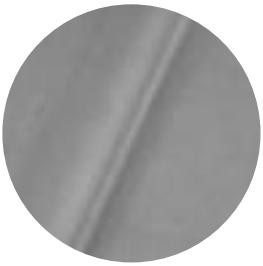
*RAL* 260 20 10  
135



*RAL* 260 40 10  
133



*PANTONE* 5305C  
149



*RAL 270 80 10*  
129



*PANTONE 7547C*  
100

# Fabrics — *Clounis boucle*



*RAL* 9016  
779.005



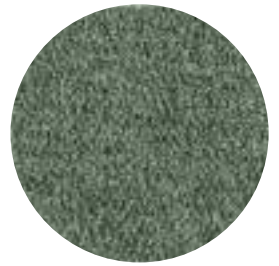
*PANTONE* 5425C  
779.006



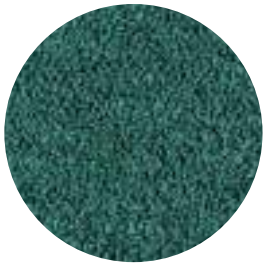
*RAL* 1015  
779.002



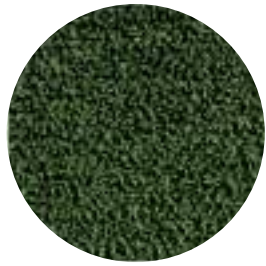
*PANTONE* 125C  
779.001



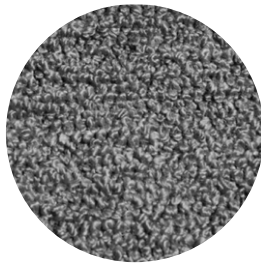
*PANTONE* 597C  
779.000



*PANTONE* 323C  
779.027



*PANTONE* 5743C  
779.026



*PANTONE* 9C  
779.030



*PANTONE* 699C  
779.003



*PANTONE* 402C  
779.028



*PANTONE* 484C  
779.025



*PANTONE* 168C  
779.020



*PANTONE* 262C  
779.022



*PANTONE* 295C  
779.023



*PANTONE* 7540C  
779.029



*PANTONE* BlackC  
779.024

# Fur — *Cashmere & Coyote*



*COYOTE  
Orange*



*COYOTE  
Fuchsia*



*COYOTE  
Tiffany*



*COYOTE  
Yellow*



*COYOTE  
Powder Pink*



*CASHMERE  
Powder Pink*



*COYOTE  
Brown*

# Fabrics — *Elitis Embellie*



*LR 331 20*



*LR 331 22*



*LR 331 70*



*LR 331 80*

# Metallic Leather— *Colormap*



*SILVER*



*LIGHT GOLD*  
7730



*GOLD*  
8417



*ROSE GOLD*  
7569



*BRONZE*  
6996



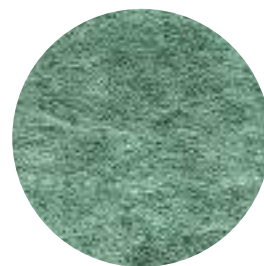
*BROWN*  
8378



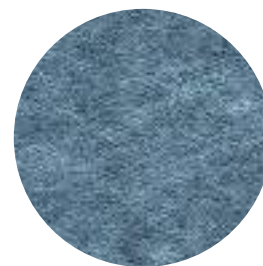
*COPPER*  
8094



*GREEN*  
7270



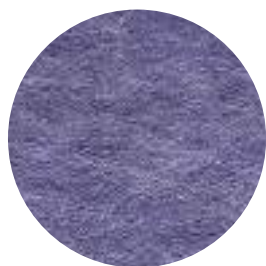
*TIFFANY*  
7670



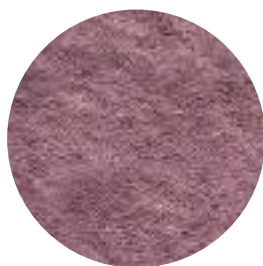
*TURQUOISE*  
7638



*PURPLE*  
8512



*LILAC*  
7551



*PINK*  
7907

# Raffia— *Colormap*



*YELLOW & BROWN*  
30+12



*BEIGE & BLACK*  
8+26



*BROWN & COPPER*  
49+12



*COPPER & YELLOW*



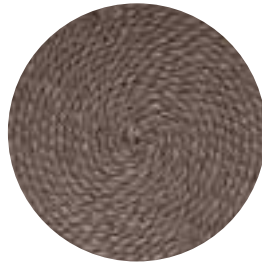
*BROWN & GREEN*



*CASTORO*



*COPPER*  
49



*BROWN*  
12



*AUBERGINE*  
23



*ORANGE*  
22



*BEIGE*  
26



*YELLOW*  
30



*BEIGE*  
53

# Raffia Fringes— *Colormap*

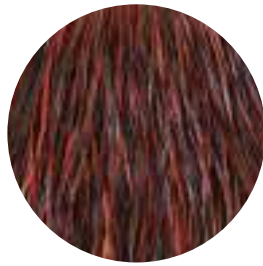


*YELLOW BROWN*



*BEIGE*

26



*BROWN & COPPER*

49+12



*CASTORO*



*BEIGE & BLACK*

8+26



*AUBERGINE*

23



*YELLOW*

30



*BROWN*

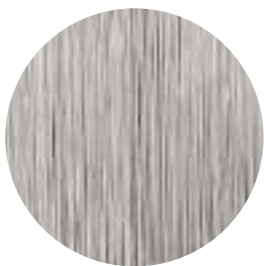
12



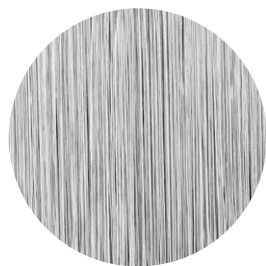
*BLACK*

08

# Fringes — *Colormap*



*RAL 9010*  
1



*RAL 9003*  
2



*PANTONE 726C*  
3



*PANTONE 4755C*  
4



*RAL 1002*  
5



*PANTONE 7504C*  
6



*RAL 1006*  
7



*PANTONE 1395C*  
8



*PANTONE 432C*  
9



*RAL 3001*  
10



*RAL 3004*  
11



*RAL 3005*  
12



*RAL 4010*  
13



*RAL 3014*  
14



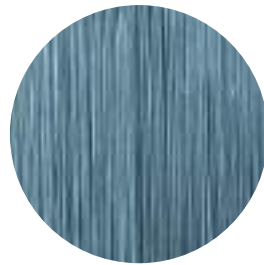
*RAL 4008*  
15



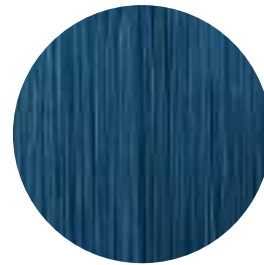
*RAL 267C*  
16



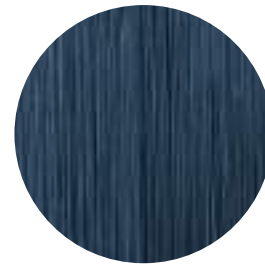
*PANTONE 340C*  
18



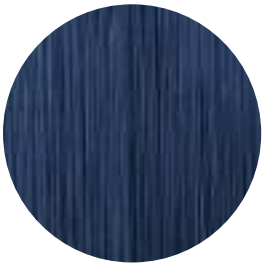
*PANTONE 2905C*  
19



*PANTONE 2995C*  
20



*PANTONE 5405C*  
21



*RAL 5000*  
22



*PANTONE 282C*  
23



*PANTONE 5255C*  
24



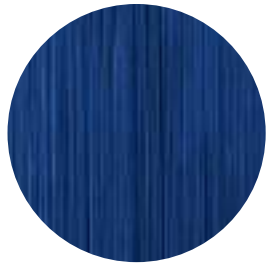
*PANTONE 4625C*  
25



*PANTONE 476C*  
26



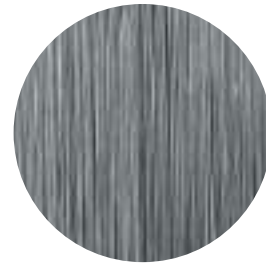
*RAL 9005*  
27



*PANTONE 293C*  
29



*PANTONE 7491C*  
31



*PANTONE 429C*  
32



*PANTONE 182C*  
33



*PANTONE 190C*  
34



*PANTONE 116C*  
35



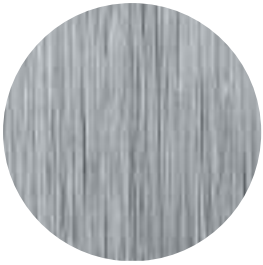
*PANTONE 1575C*  
36



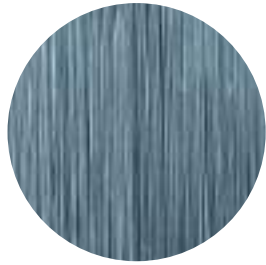
*RAL 1005*  
37



*RAL 1015*  
38



*PANTONE 428C*  
39



*PANTONE 550C*  
40



*PANTONE 1605C*  
44



*PANTONE 3308C*  
45



*PANTONE 731C*  
46

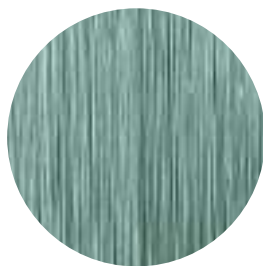
# Fringes — *Colormap*



*RAL* 4005  
47



*PANTONE* 169C  
48



*PANTONE* 337C  
49



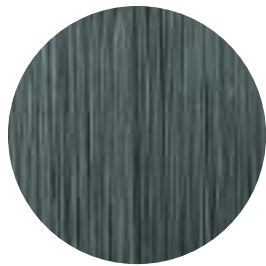
*PANTONE* 196C  
50



*PANTONE* 141C  
51



*RAL* 8004  
55



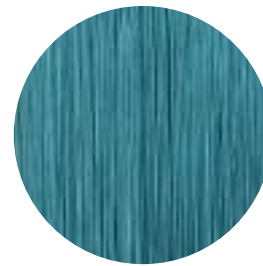
*PANTONE* 5497  
56



*PANTONE* 7476C  
57



*RAL* 3000  
58



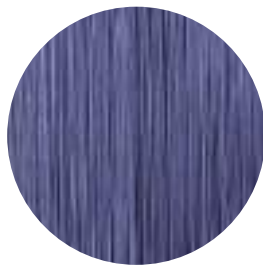
*PANTONE* 7476C  
30



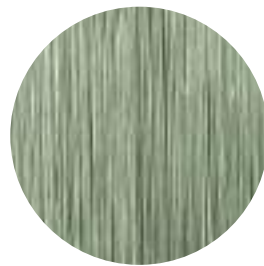
*RAL* 2012  
60



*PANTONE* 234C  
63



*PANTONE* 7452C  
28



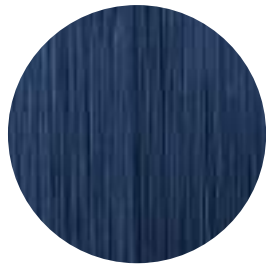
*PANTONE* 559C  
70



*PANTONE* 721C  
74



*PANTONE* 7522C  
75



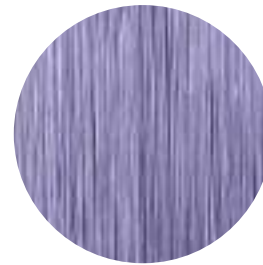
*PANTONE* 4735U  
79



*RAL* 6003  
17



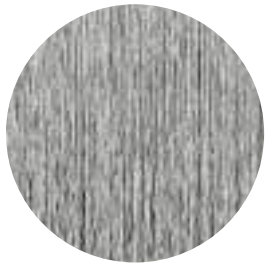
*PANTONE* 361C  
71



*PANTONE* 2567C  
72



*PANTONE 5145C*  
76



*SILVER*  
A



*LIGHT GOLD*  
B



*GOLD*  
C



*GREEN*  
D



*COPPER*  
E



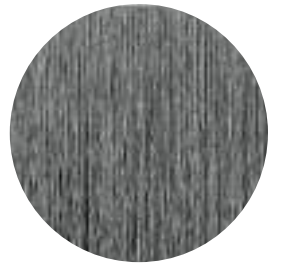
*LIGHT BROWN*  
F



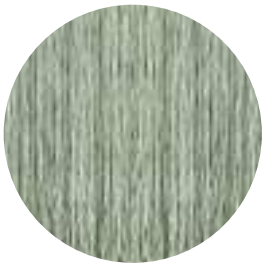
*DARK BROWN*  
G



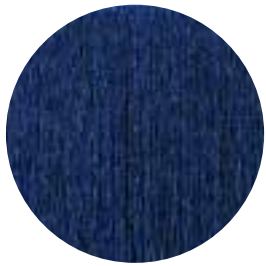
*BLACK*  
H



*GREY*  
I



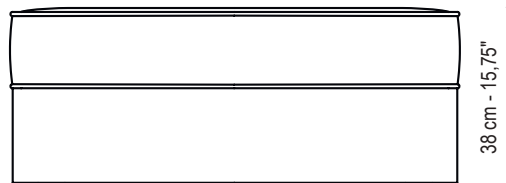
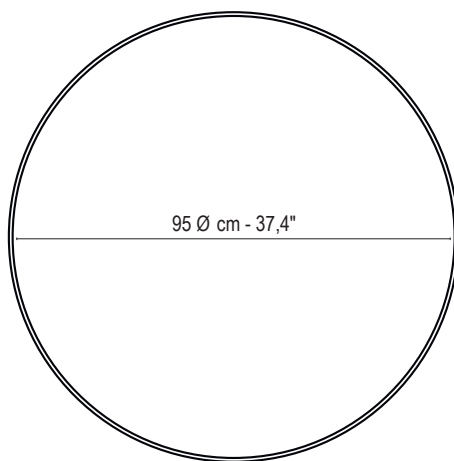
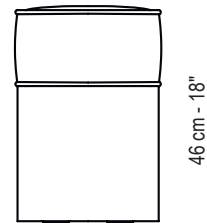
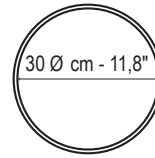
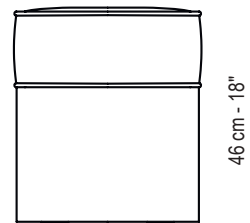
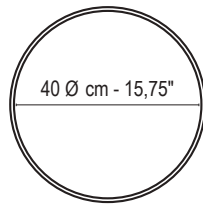
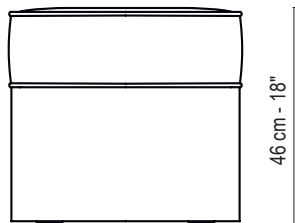
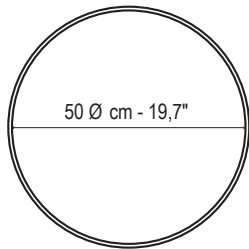
*LIGHT BLUE*  
M



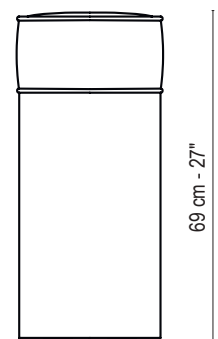
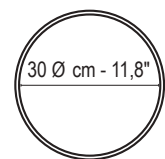
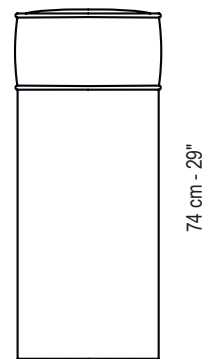
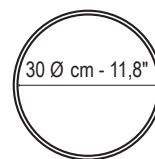
*BLUE*  
L

# Technical drawings — *Poufs*

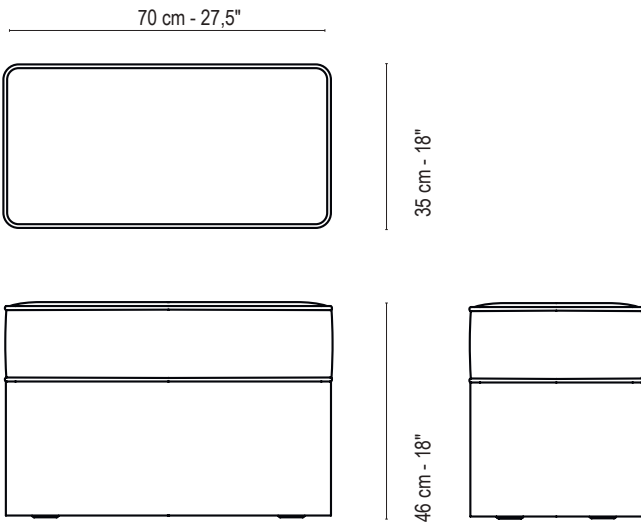
## Rounded Poufs



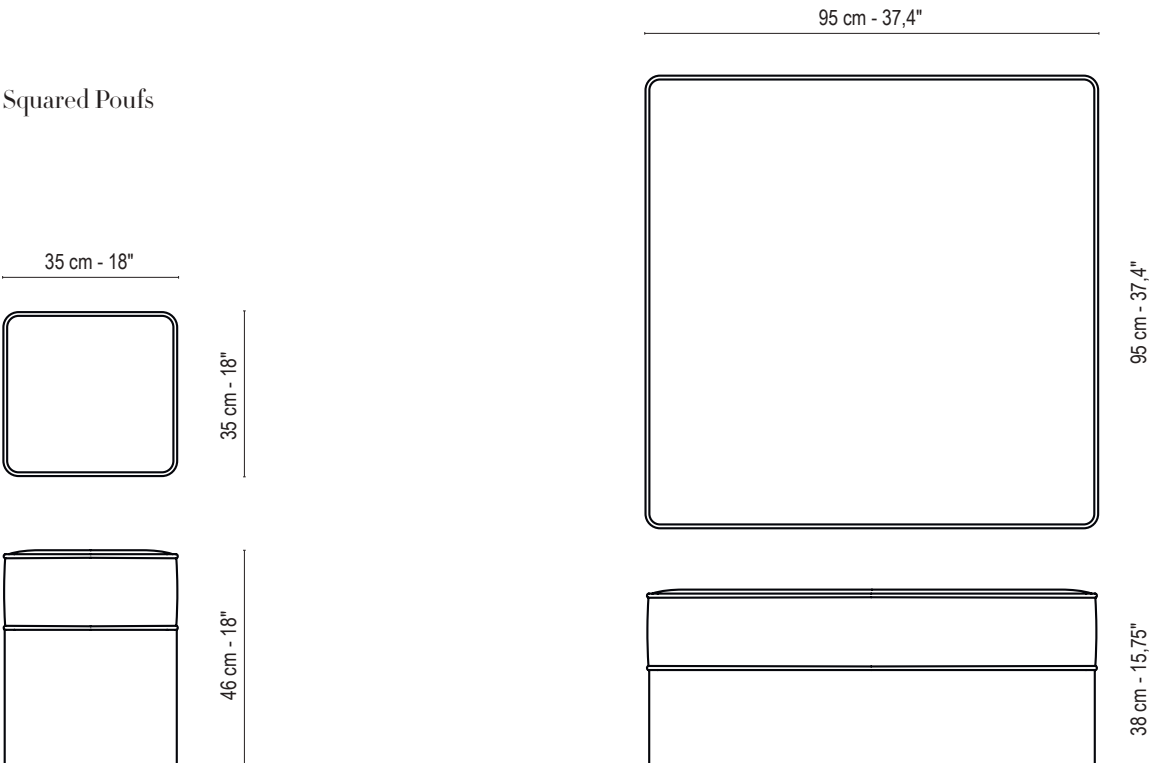
## Bar stool



### Squared Bench

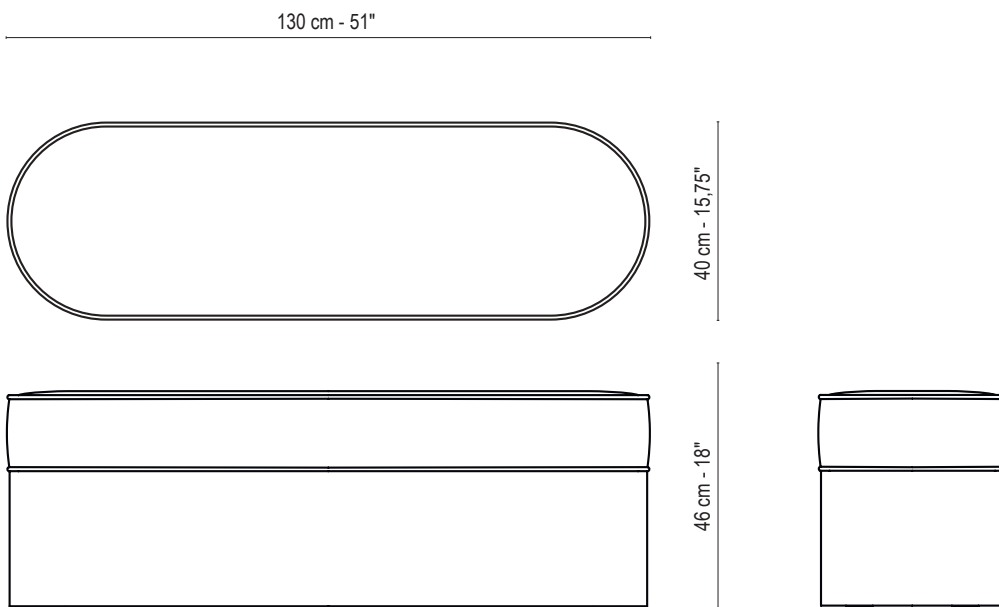
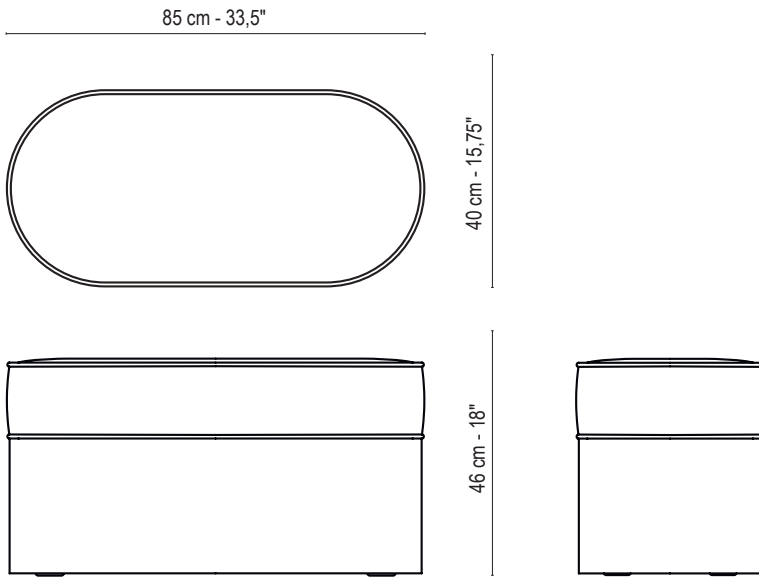


### Squared Poufs

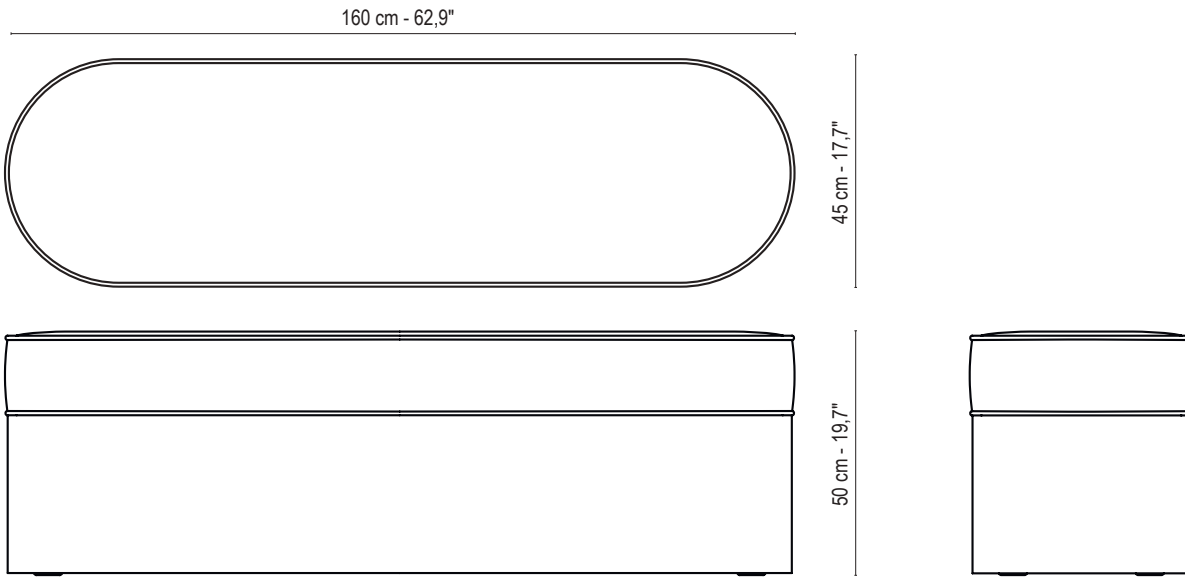


# Technical drawings — *Benches*

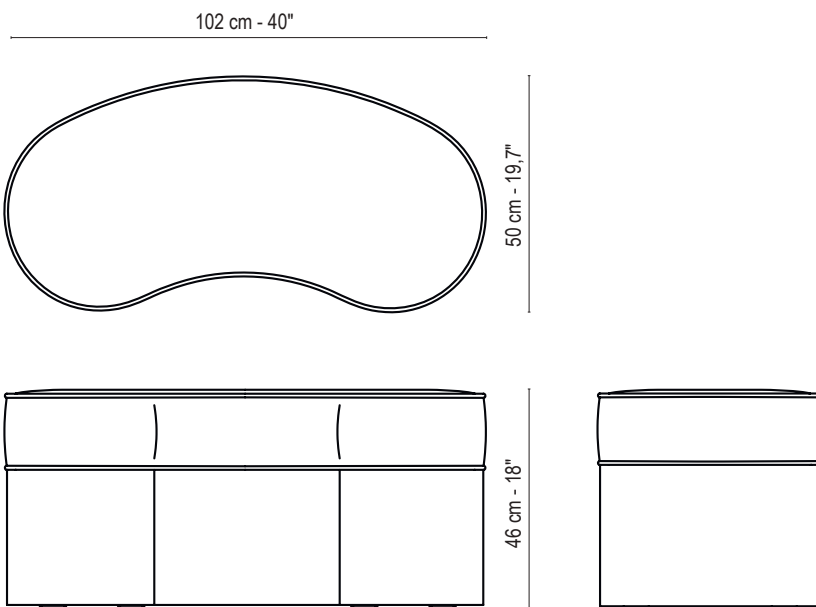
## Rounded Benches



Rounded Bench



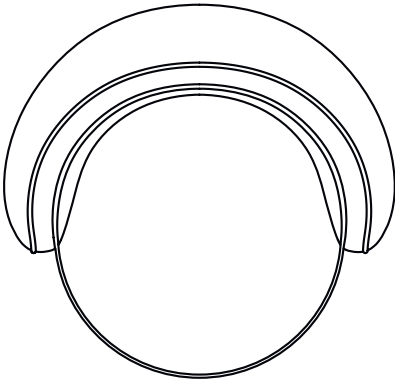
Bean Bench



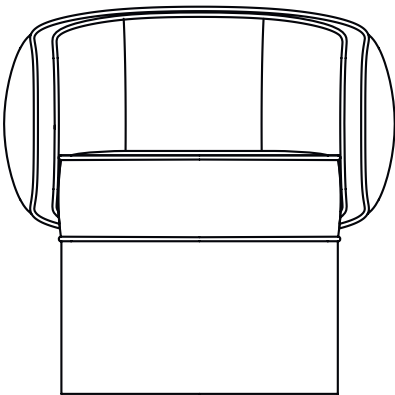
# Technical drawings — *Seating*

Pirouette Armchair

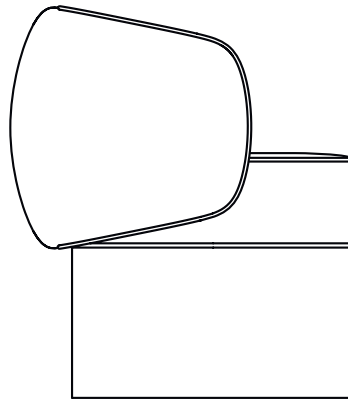
73 cm - 28,75"



70 cm - 27,5"



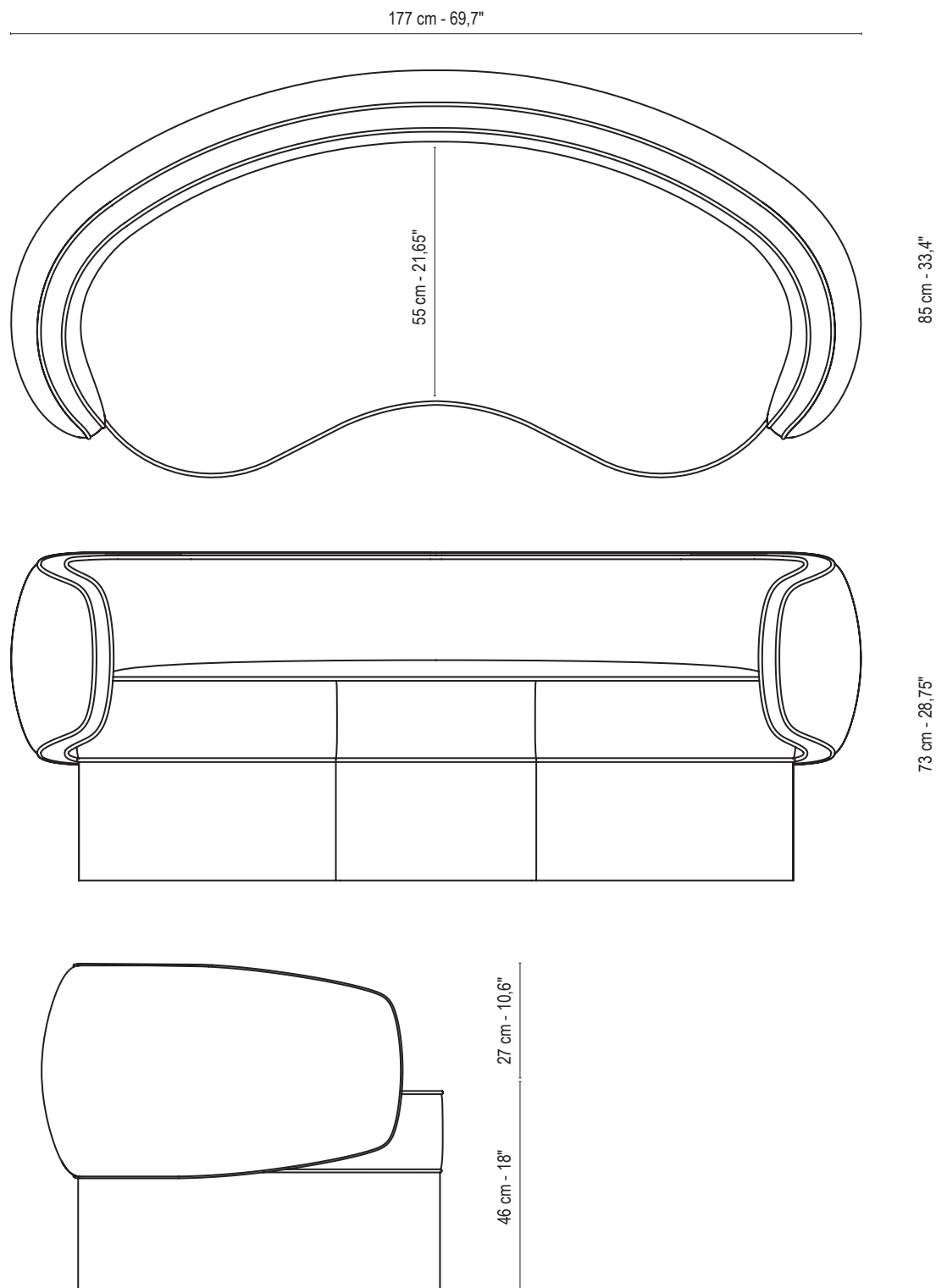
73 cm - 28,75"



27 cm - 10,6"

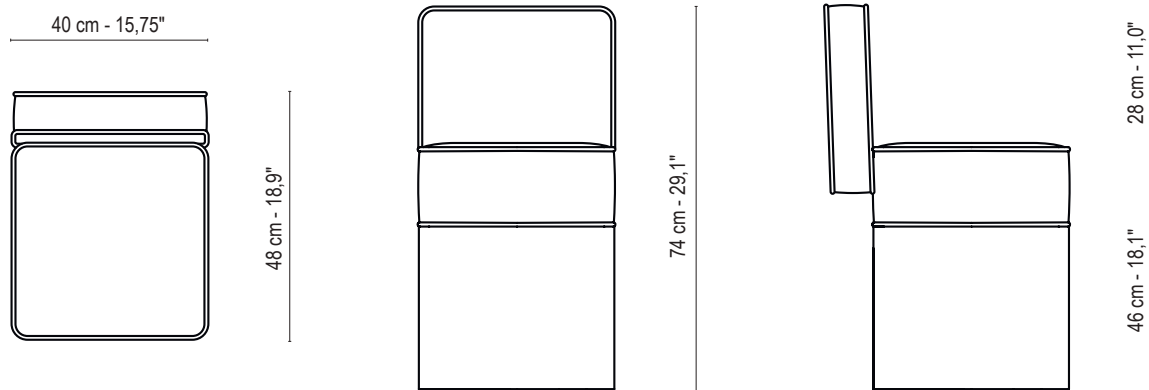
46 cm - 18"

Pirouette Sofa

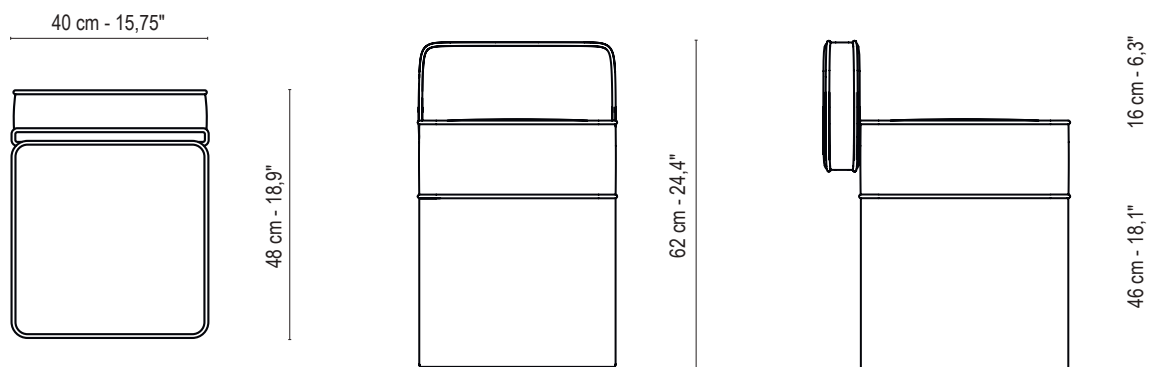


# Technical drawings — *Seating*

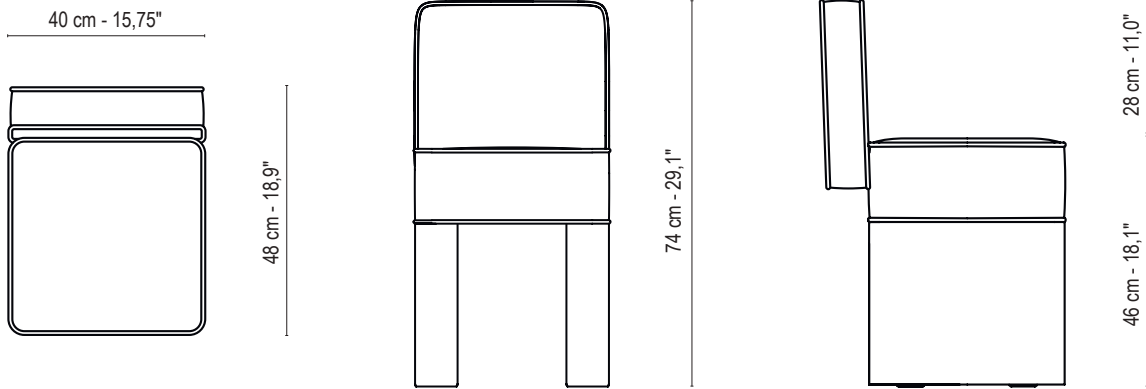
Lilli Chair



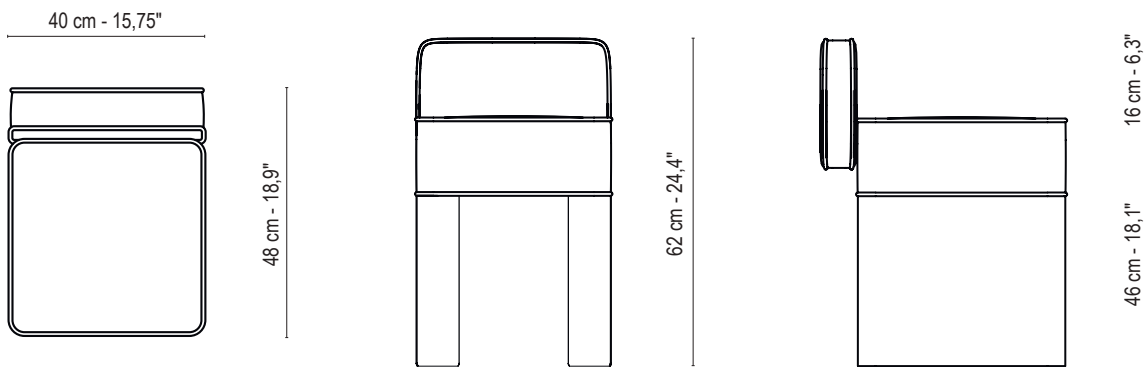
Lilli Vanity



Lilli Chair - 2 Legs

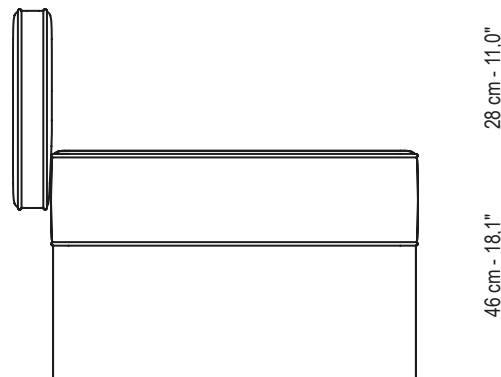
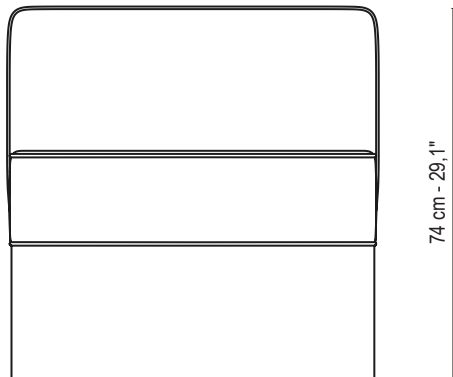
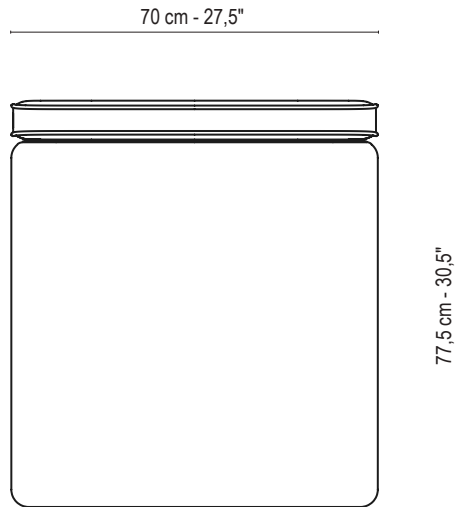


Lilli Vanity - 2 Legs



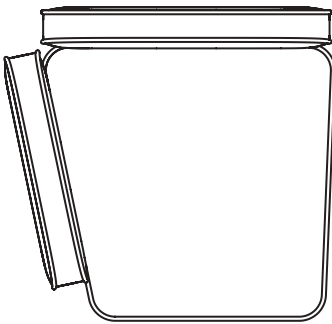
# Technical drawings — *Seating*

Lilli Lounge Sofá

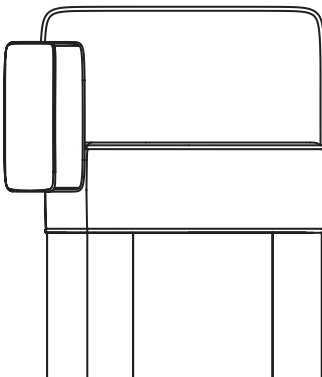


# Lilli Ugly Armchair

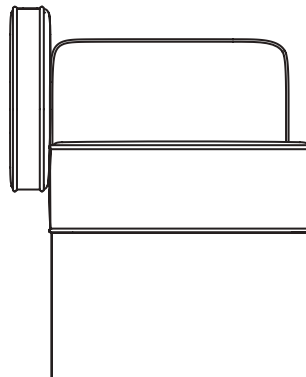
55 cm - 21,6"



57,5 cm - 22,6"



74 cm - 29,1"

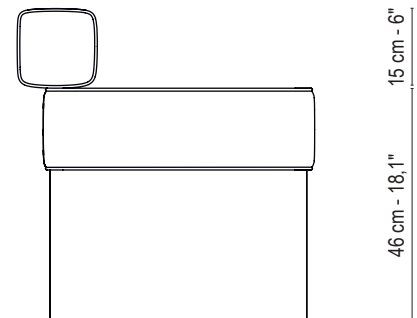
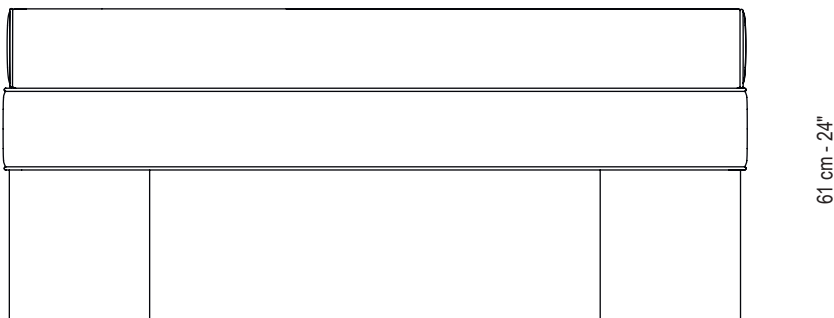
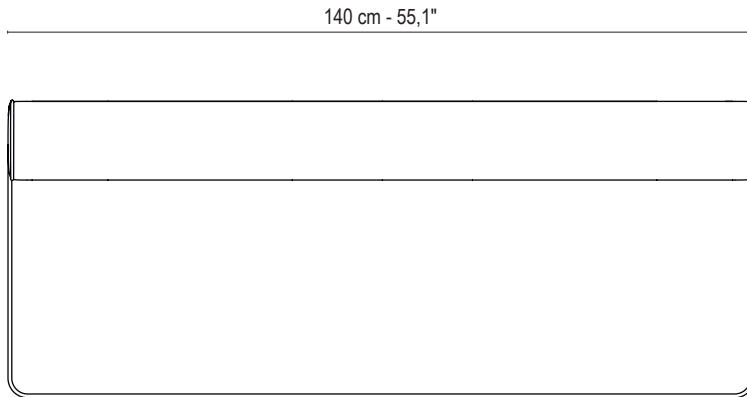


28 cm - 11"

46 cm - 18,1"

# Technical drawings — *Seating*

Lilli Tria Bench





The round seating are available in 8 standard sizes::

**Poufs with 30 cm diameter 46 cm height:**

Ideal as extra seat in the living room, walk-in closets, shoe stores, fitting room.

**Poufs with 40 cm diameter 46 cm height:**

Ideal as seat for vanity table, an extra seat for living room, ottoman.

**Poufs with 50 cm diameter 46 cm height:**

Ideal as a side-table, table for serving trays, an extra seat.

**85X40 cm benches with 46 cm height:**

Ideal as a low seat for more people, in lobbies, vestibule spaces, center table.

**130X40 cm benches with 46 cm height [rounded edge]:**

Ideal as a seat for more people, in lobbies, vestibule spaces.

**160X45 cm benches with 50 cm height [rounded edge]:**

Ideal as an end of a Queen bed bench, in entryways, in walk-in wardrobes or as a seating along a wall for a long table.

**Pirouette swivel armchair:**

Ideal as an occasional armchair in livingroom to pair with the Pirouette Sofa or already perfect as a standalone piece.

**Pirouette Sofa:**

Ideal as a conversational sofa in livingroom.

The **square seating** are available in 9 standard sizes as well:

**35X35 cm square Poufs with 46 cm height:**

Ideal as extra seat in the living room, walk-in closets, shoe stores, fitting room etc.

**70X35 cm Benches with 46 cm height:**

Ideal as an extra seat for living room, in lobbies etc.

**140X35 cm Benches with 46 cm height:**

Ideal to complement furniture in the living room, in entryways, in walk-in wardrobes or as an end of a double bed bench.

**95x95 cm square Poufs with 38 cm height:**

Ideal as a low seat for multiple people, in lobbies, as a coffee table with a tray on it or as an extension for a sofa.

**Tria Bench:**

Ideal as a refined seating solution for contemporary interiors in entryways, or elegantly paired with a dining table.

**Lilli Chair:**

Ideal as a seating around a table as a dining chair, as an accent chair in a living room, a side chair in a studio, a corner chair in a bedroom or a seating for a vanity desk.

**Lilli Vanity:**

Ideal as a stylish and comfortable addition to your beauty station.

**Lilli Ugly:**

Ideal as an occasional or dining chair, fitting effortlessly into any setting.

**Lilli Lounge:**

Ideal as a modular sofa or a standalone piece, perfect for sophisticated living areas, private lounges, or refined hospitality spaces.

# Overview —

## *Plissé Collection* *Square Seatings*



-PLISSÈ Pouf:  
35X35 cm



-PLISSÈ Bench:  
70cmx35cm



-PLISSÈ Pouf:  
70X70 cm



-PLISSÈ Pouf:  
95x95cm H 38cm



-PLISSÈ Lilli Vanity:  
40x40cm H 62cm

## *Round Seatings*



-PLISSÈ Pouf:  
50 Ø cm



-PLISSÈ Pouf:  
40 Ø cm



-PLISSÈ Pouf:  
30 Ø cm



-PLISSÈ Bench:  
85cmx40cm



-PLISSÈ Bench:  
130cmx40cm



-PLISSÈ Pouf:  
95 Ø cm H 38cm



-PLISSÈ Bench:  
160x45cm H 50cm

# Overview —

## *Lilli Collection*



-LILLI Chair  
40x40cm H 74cm



-LILLI Chair  
40x40cm H 74cm



-LILLI Vanity Chair  
40x40cm H 62cm



-LILLI Lounge:  
70x70 cm H 74 cm



-UGLY Armchair:  
50 Ø cm H 74cm



-TRIA Bench:  
140x55cm H 61cm

# *Raffia Collection*



-STRAW Pouf:  
30 0 cm



-STRAW Pouf:  
40 0 cm



-STRAW Pouf:  
50 0cm



-STRAW Pouf:  
30 0 cm



-STRAW Bench:  
85cmx40cm



-STRAW Pouf:  
40 0 cm



-STRAW Pouf:  
95 0 cm H 38cm

# Overview —

## *Pirouette Collection*



-PIROUETTE Sofa:  
180cmx85cm H 73cm



-PIROUETTE Armchair:  
Brown Coyote  
73x70cm H 73cm

# *Gleaming Tribe Collection*



-GLEAMING TRIBE Pouf:  
50 0 cm



-GLEAMING TRIBE Pouf:  
40 0 cm



-GLEAMING TRIBE Pouf:  
30 0 cm

# Overview —

## *Treasure Collection*



-TREASURE Poufs:  
50 Øcm, 30 Øcm, 40 Øcm



-TREASUREP Bench:  
85cmx40cm



-TREASURE Pirouette:  
73x70cm H 73cm



-TREASURE square Bench:  
70x35cm



-TREASURE square Pouf:  
35x35cm



-TREASURE square Pouf:  
95x95cm



-TREASURE square Pouf:  
95 Øcm H 38cm



-TREASURE Bench:  
160x45cm H 50cm



-TREASURE Pouf:  
40 Ø cm



-TREASURE Pouf:  
50 Ø cm



-TREASURE Pouf:  
95 Ø cm H 38cm



-TREASURE square Bench:  
70x35cm



-TREASURE square Pouf:  
35x35cm



-TREASURE square Pouf:  
60x60cm



-TREASURE Pirouette



-TREASURE Lilli chairs:  
40x40cm H 74cm



-TREASURE square Pouf:  
95x95cm H 38cm

# Overview — *Gleaming Collection*



-GLEAMING Pouf:  
50 0cm



-GLEAMING Pouf:  
40 0cm



-GLEAMING Pouf:  
30 0cm



-GLEAMING Pirouette:  
73x70cm H 73cm



-GLEAMING Lilli chair:  
40x40cm H 74cm



-GLEAMING Lilli chair



-GLEAMING Barstool:  
30 0cm H 74cm



-GLEAMING Pouf:  
50 0cm



-GLEAMING Pouf:  
40x40cm H 74cm

# *Sparkle Collection*



-SPARKLE Pouf:  
50 0cm



-SPARKLE Pouf:  
40 0cm



-SPARKLE Pouf:  
30 0cm



-SPARKLE Barstool:  
30 0cm H 74cm



-SPARKLE Bean Pouf:  
102x48cm



-SPARKLE Bench:  
130x40cm



-SPARKLE Bench:  
85x40cm



-SPARKLE Bench:  
160x45cm H 50cm

# Overview —

## *Riga Collection*



-Riga Pouf:  
50 0cm



-Riga Pouf:  
40 0cm



-Riga Pouf:  
30 0cm



-Riga Pouf:  
30 0cm



-RIGA Bench:  
130x40cm



-Riga Pouf:  
95 0cm H 38cm



-RIGA Bicolour Bench:  
160x45x50cm H 50cm



-RIGA Bench:  
85x40cm

# *Tie Collection*



-TIE Pouf:  
50 0cm



-TIE Pouf:  
40 0cm



-TIE Pouf:  
30 0cm



-TIE square Pouf:  
110x110cm H 38cm



-TIE Pouf:  
95 0cm H 38cm



-TIE Barstool:  
30 0cm H 74cm



-TIE Bench:  
130x40cm

# Overview —

## *Plain Collection*



-PLAIN Pouf:  
50 0cm



-PLAIN Pouf:  
40 0cm



-PLAIN Pouf:  
30 0cm



-PLAIN Pouf:  
95 0cm H 38cm



-PLAIN Lilli chair:  
40x40cm H 74cm



-PLAIN Bench:  
85x40cm



-PLAIN Bench:  
130x40cm

# *Bicolor Collection*



-BICOLOR Pouf:  
30 ø cm



-BICOLOR Pouf:  
40 ø cm



-BICOLOR Pouf:  
50 ø cm



-BICOLOR Bench:  
85cmx40cm



-BICOLOR Bench:  
130x40cm



BICOLOR Pouf:  
95x95cm H 38cm



-BICOLOR Bench:  
160x45cm H 50cm

# Overview —

## *Flo Collection*



-FLO Pouf:  
40 0 cm



-FLO Pouf:  
50 0 cm



-FLO bean Bench:  
102cmx48cm



-FLO square Bench:  
70x35cm



-FLO square Pouf:  
35x35



-WIEN Bench:  
85cmx40cm



-FLO Pirouette:  
73x70cm H 73cm



-FLO Pouf:  
95x95cm H 38cm

# Wien Collection



-WIEN Pouf:  
40 0 cm



-WIEN Pouf:  
50 0 cm



-WIEN bean Bench:  
102cmx48cm



-WIEN square Pouf:  
35x35



-WIEN Pouf:  
95x95cm H 38cm



-WIEN Bench:  
85cmx40cm



-WIEN Bench:  
130x40cm

# Overview —

## *Tribe Collection*



-ETNO tribe Pouf:  
50 0cm



-LINE Pouf:  
40 0cm



-CLEO Pouf:  
40 0cm



-MALI Bench:  
85x40cm



-Tribe Bean Bench:  
102x50cm



-ETNO square Pouf:  
35x35cm



-CLEO Pouf:  
95 0cm H 38cm



-LINE Bench:  
130x40cm

# *Eli Collection*



-ELI Pouf:  
50 0cm



-ELI Pouf:  
40 0cm



-ELI Pouf:  
30 0cm



-ELI square Pouf:  
35x35cm



-ELI Pouf:  
30 0cm



-ELI Pirouette:  
73x70cm H 73cm



-PLAIN Lilli chair:  
40x40cm H 74cm

# Overview —

## *Fur Collection*



-FUR Pouf:  
Yellow Coyote  
50 0cm



-FUR Pouf:  
Orange Coyote  
40 0cm



-FUR Pouf:  
Tiffany Coyote  
30 0cm



-FUR Pouf:  
Powder-Pink Cashmere  
40 0cm



FUR Bench:  
Powder-Pink Cashmere  
85x40cm



-FUR Pouf:  
Brown Coyote  
40 0cm



-FUR Pouf:  
Powder-Pink Coyote  
40 0cm



FUR Bench:  
Powder-Pink Coyote  
85x40cm



-FUR Pirouette  
Tiffany Coyote  
73x70cm H 73cm



-FUR Pirouette  
Powder-Pink Coyote  
73x70cm H 73cm



-FUR Pirouette  
Powder-Pink Cashmere  
73x70cm H 73cm



-PIROUETTE Armchair:  
Brown Coyote  
73x70cm H 73cm



Discover more products and customizations on *[LorenzaBozzoliCouture.com](http://LorenzaBozzoliCouture.com)*



# Credits

**Designer and Art Director:** Lorenza Bozzoli

**Photographer:** Fedro Fasoli, Nicole Marnati (for the Geo and Tribe collection)

**Architect:** Piergiorgio Fasoli

**Styling:** Kateryna Chala

**Graphic and Post Production:** Luca Pisoni

**Couturist:** Eugenia Sist

**Design:** Mikel Peruch

**Lorenza Bozzoli Design S.r.l**

Address : Piazza Castello, 20

20121 Milano - Italia

Mob : +39 339 892 7777

T+39 02-72018776

**[www.lorenzabozzolicouture.com](http://www.lorenzabozzolicouture.com)**  
**[lorenza.bozzoli@lorenzabozzoli.com](mailto:lorenza.bozzoli@lorenzabozzoli.com)**